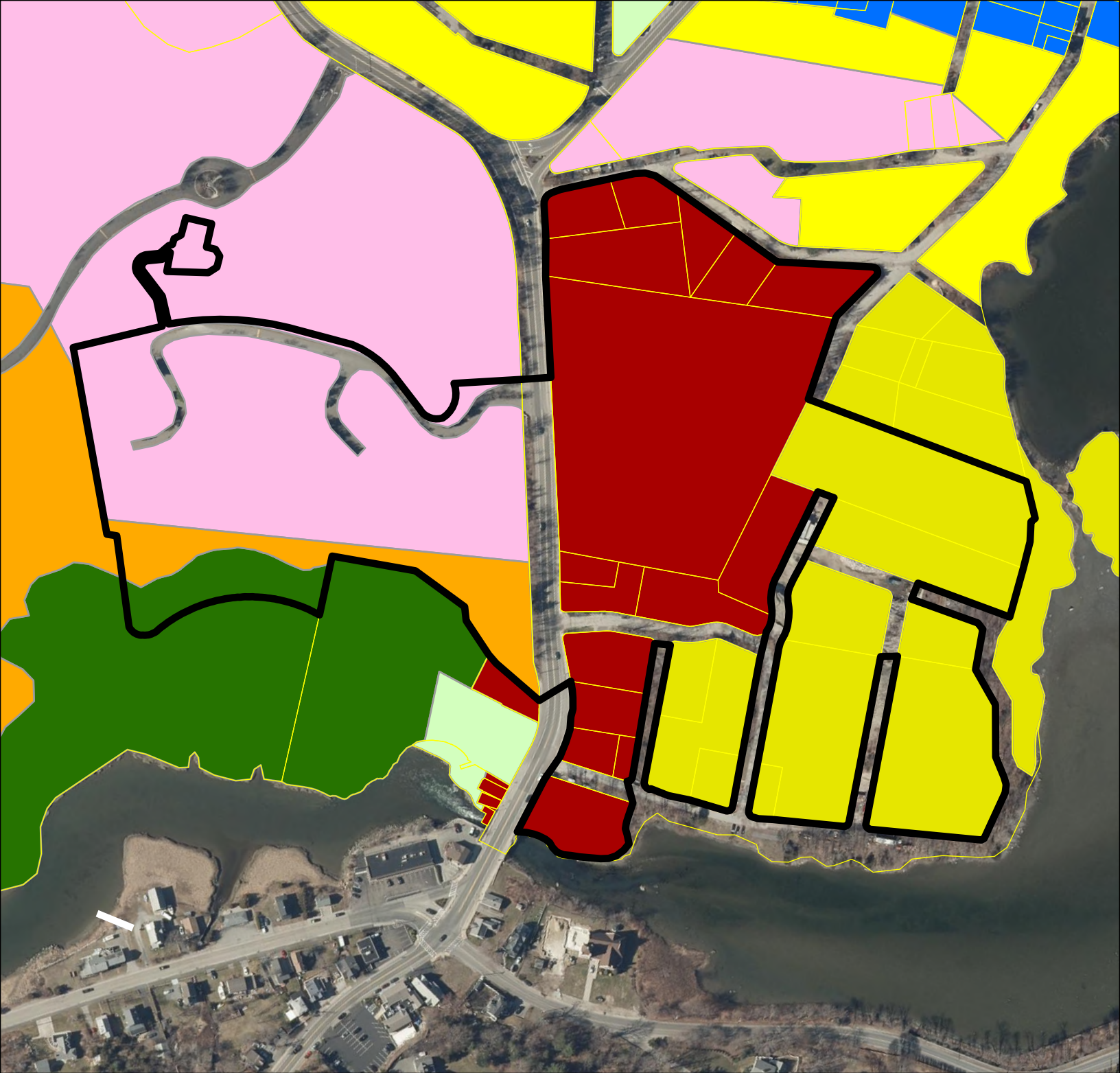


**Article ??.** To see if the Town will amend the Zoning Map as follows:

- 1. Expansion of Commercial Recreation C (CRC) district as shown**
- 2. Expansion of Commercial Recreation B (CRB) district as shown**
- 3. Expansion of Multi-Family B (MFB) district as shown**



MBTA Communities  
District 1  
Aerial - Existing Conditions

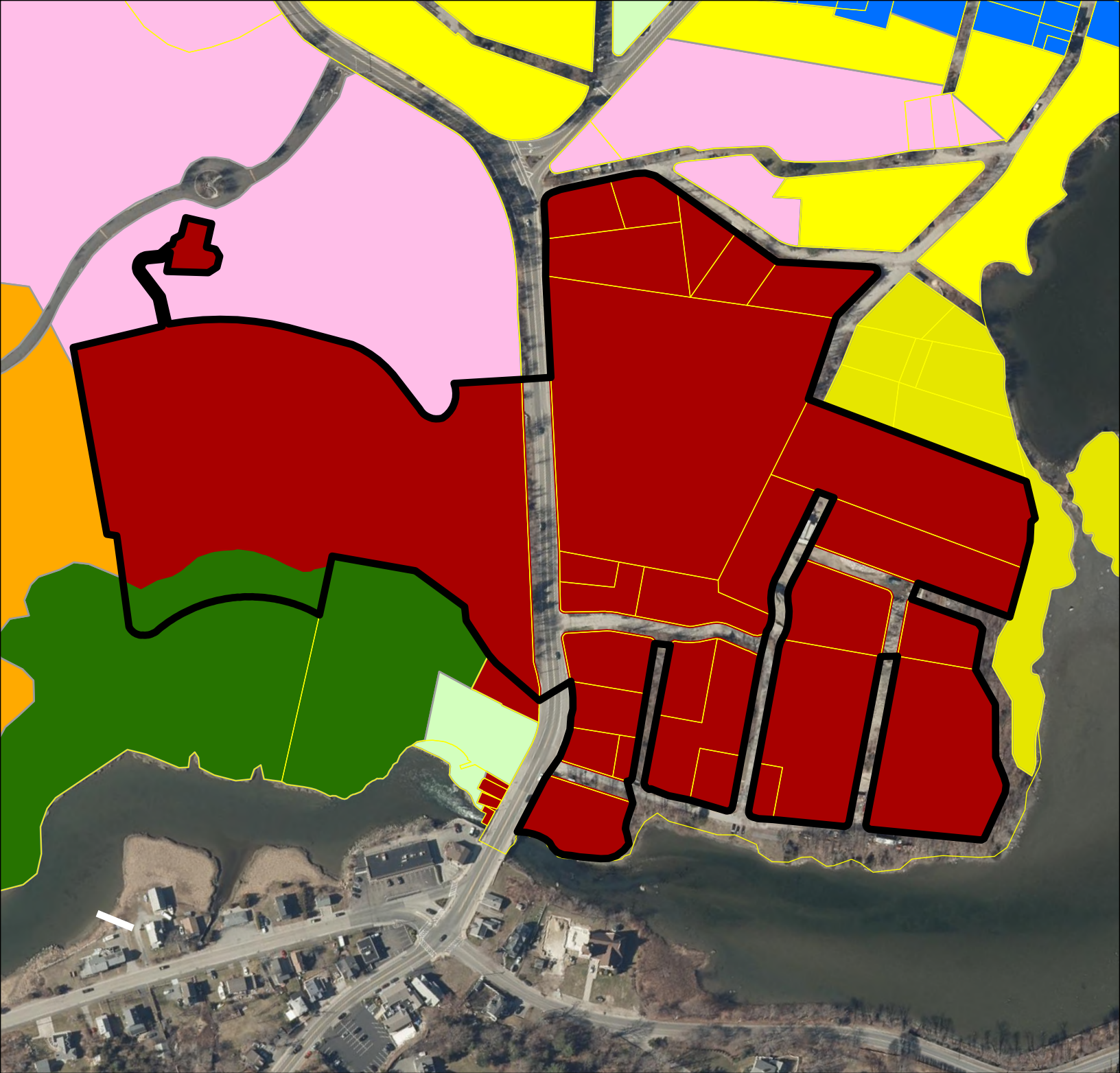


# MBTA Communities District 1 Existing Zoning

## ZONING

- SINGLE-FAMILY A
- SINGLE-FAMILY B
- SINGLE-FAMILY C
- MULTI-FAMILY A
- MULTI-FAMILY B
- TOWNHOUSE
- COMMERCIAL-REC-A
- COMMERCIAL-REC-B
- COMMERCIAL-REC-C
- BUSINESS

- CONSERVATION
- PUBLIC-OPEN-SPACE
- WATER
- WATERFRONT-DISTRICT
- NBOD
- < all other values >



# MBTA Communities District 1 Proposed Zoning

## ZONING

- SINGLE-FAMILY A
- SINGLE-FAMILY B
- SINGLE-FAMILY C
- MULTI-FAMILY A
- MULTI-FAMILY B
- TOWNHOUSE
- COMMERCIAL-REC-A
- COMMERCIAL-REC-B
- COMMERCIAL-REC-C
- BUSINESS

- CONSERVATION
- PUBLIC-OPEN-SPACE
- WATER
- WATERFRONT-DISTRICT
- NBOD
- <all other values>



MBTA Communities  
District 2  
Aerial - Existing Conditions

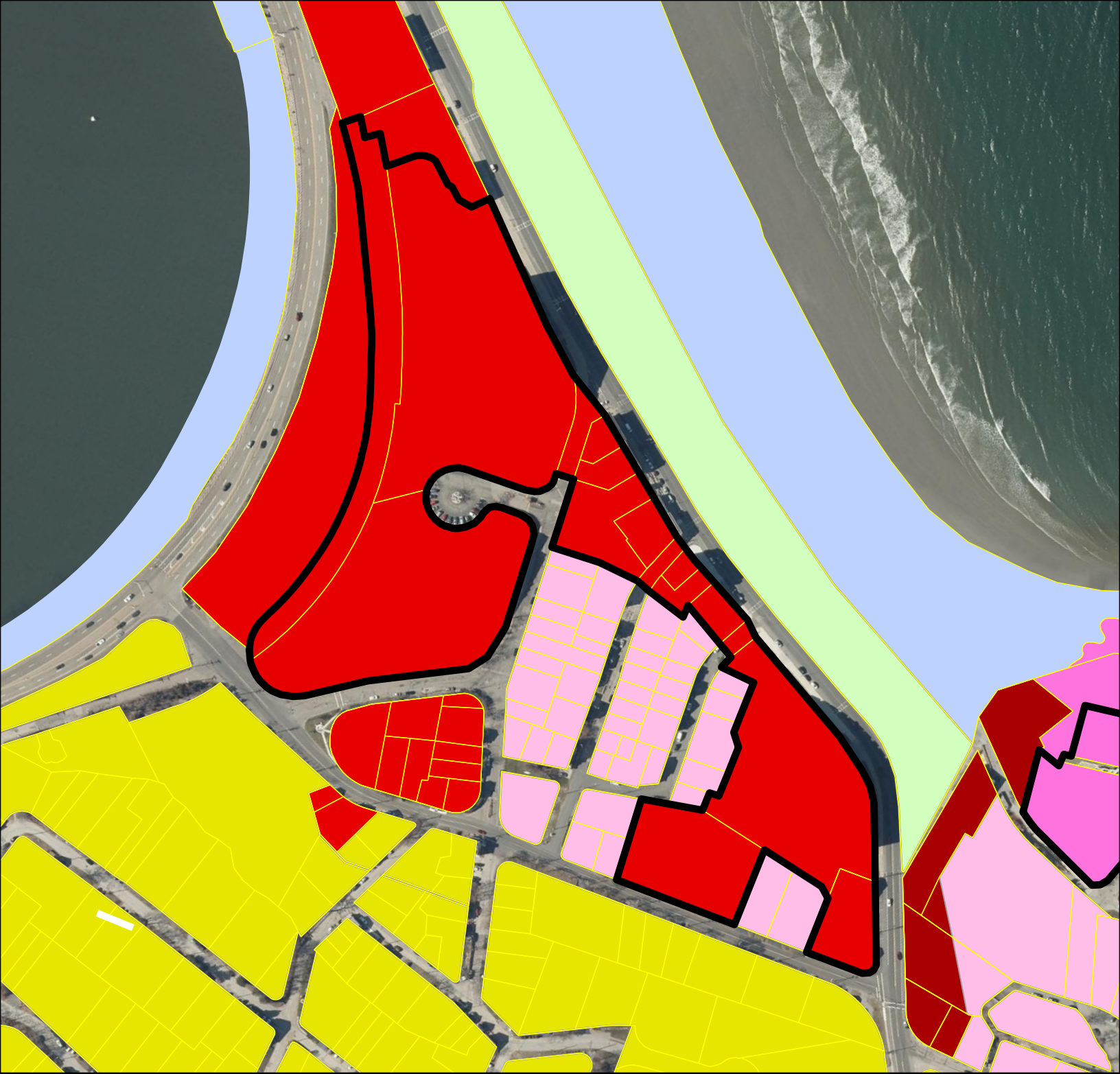


# MBTA Communities District 2 Existing Zoning

## ZONING

- SINGLE-FAMILY A
- SINGLE-FAMILY B
- SINGLE-FAMILY C
- MULTI-FAMILY A
- MULTI-FAMILY B
- TOWNHOUSE
- COMMERCIAL-REC-A
- COMMERCIAL-REC-B
- COMMERCIAL-REC-C
- BUSINESS

- CONSERVATION
- PUBLIC-OPEN-SPACE
- WATER
- WATERFRONT-DISTRICT
- NBOD
- < all other values >



# MBTA Communities District 2 Proposed Zoning

## ZONING

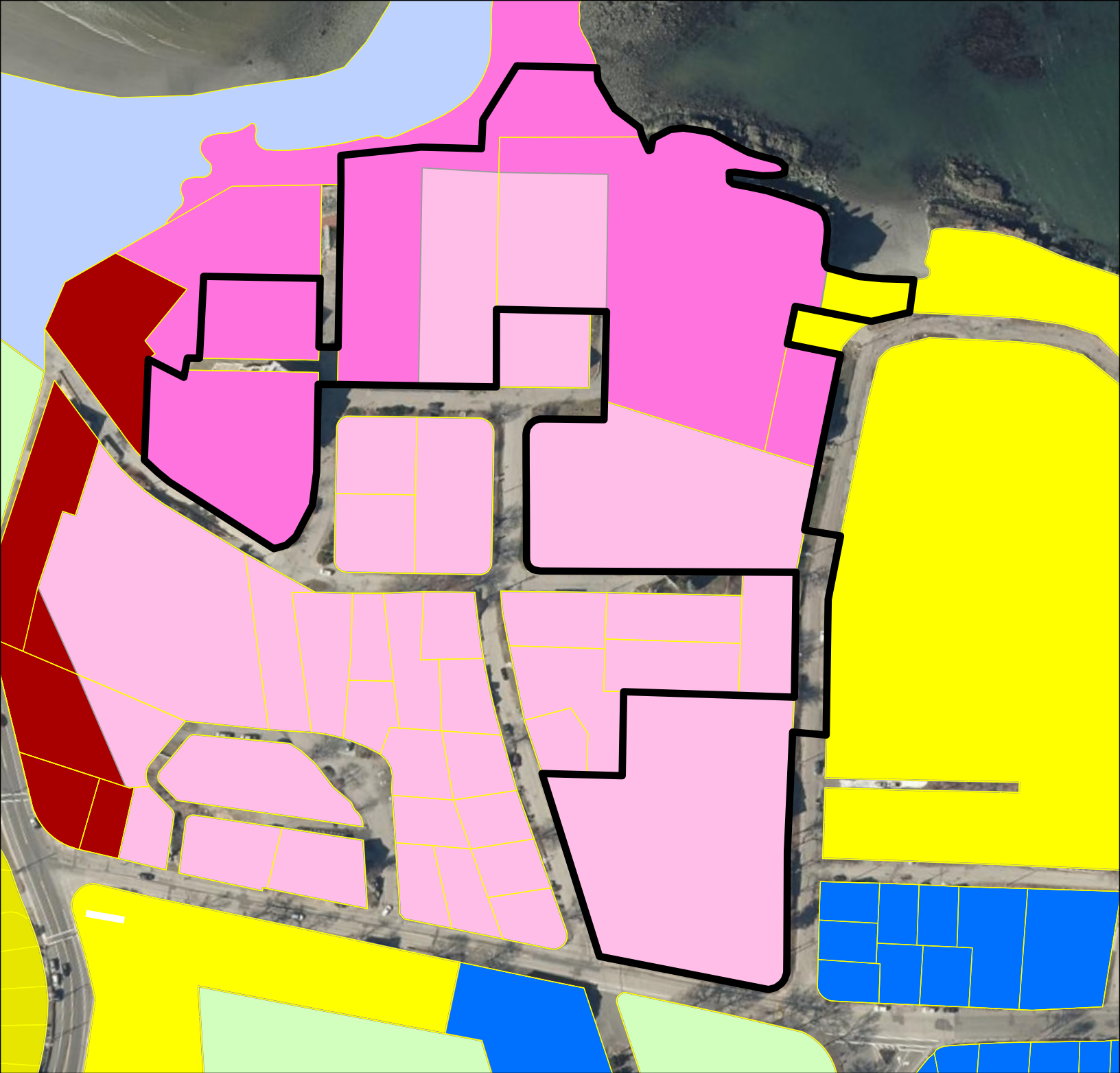
- SINGLE-FAMILY A
- SINGLE-FAMILY B
- SINGLE-FAMILY C
- MULTI-FAMILY A
- MULTI-FAMILY B
- TOWNHOUSE
- COMMERCIAL-REC-A
- COMMERCIAL-REC-B
- COMMERCIAL-REC-C
- BUSINESS

- CONSERVATION
- PUBLIC-OPEN-SPACE
- WATER
- WATERFRONT-DISTRICT
- NBOD
- < all other values >



MBTA Communities  
District 3  
Aerial - Existing Conditions



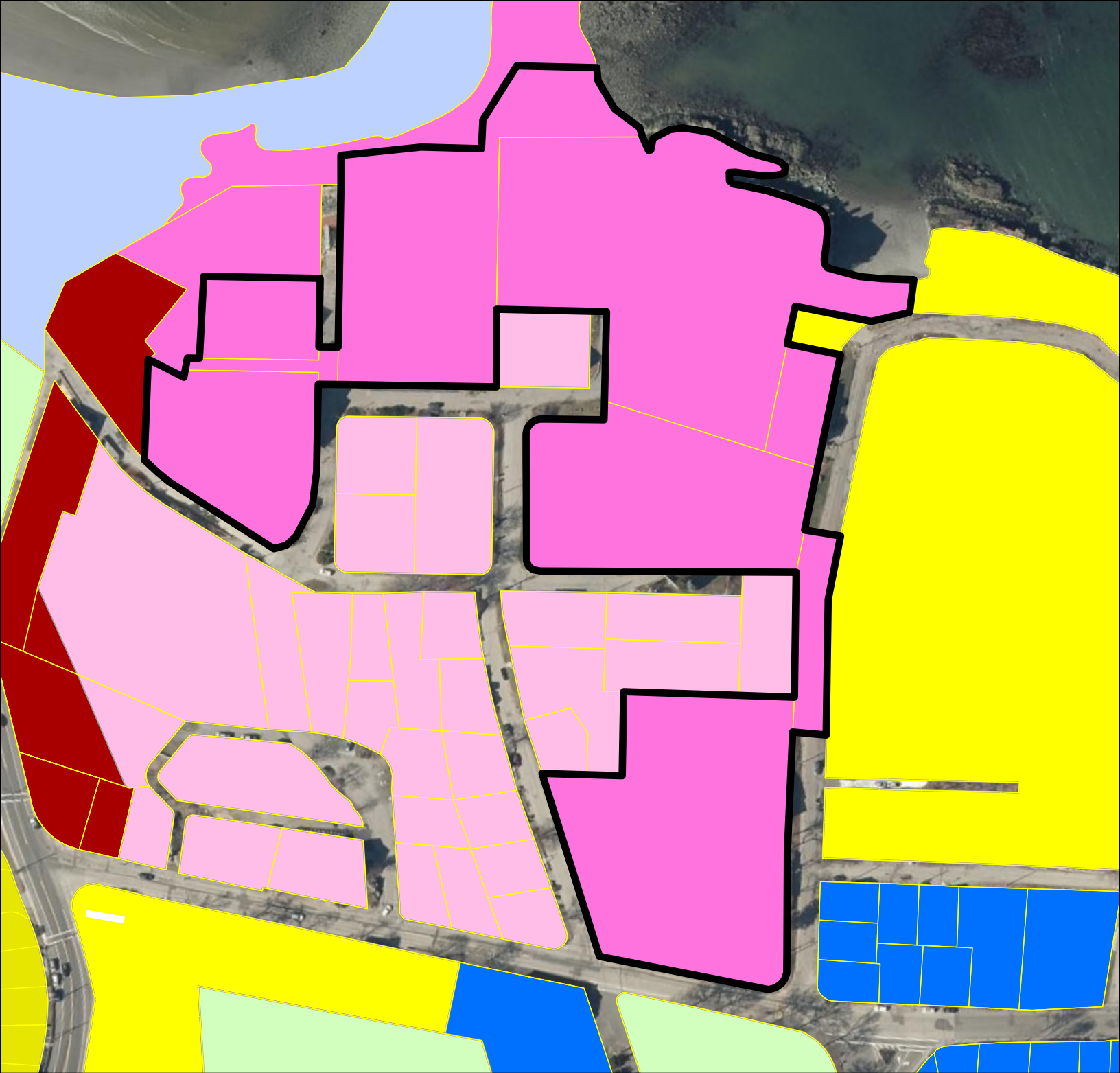


# MBTA Communities District 3 Existing Zoning

## ZONING

- SINGLE-FAMILY A
- SINGLE-FAMILY B
- SINGLE-FAMILY C
- MULTI-FAMILY A
- MULTI-FAMILY B
- TOWNHOUSE
- COMMERCIAL-REC-A
- COMMERCIAL-REC-B
- COMMERCIAL-REC-C
- BUSINESS

- CONSERVATION
- PUBLIC-OPEN-SPACE
- WATER
- WATERFRONT-DISTRICT
- NBOD
- < all other values >



# MBTA Communities District 3 Proposed Zoning

## ZONING

- SINGLE-FAMILY A
- SINGLE-FAMILY B
- SINGLE-FAMILY C
- MULTI-FAMILY A
- MULTI-FAMILY B
- TOWNHOUSE
- COMMERCIAL-REC-A
- COMMERCIAL-REC-B
- COMMERCIAL-REC-C
- BUSINESS

- CONSERVATION
- PUBLIC-OPEN-SPACE
- WATER
- WATERFRONT-DISTRICT
- NBOD
- < all other values >