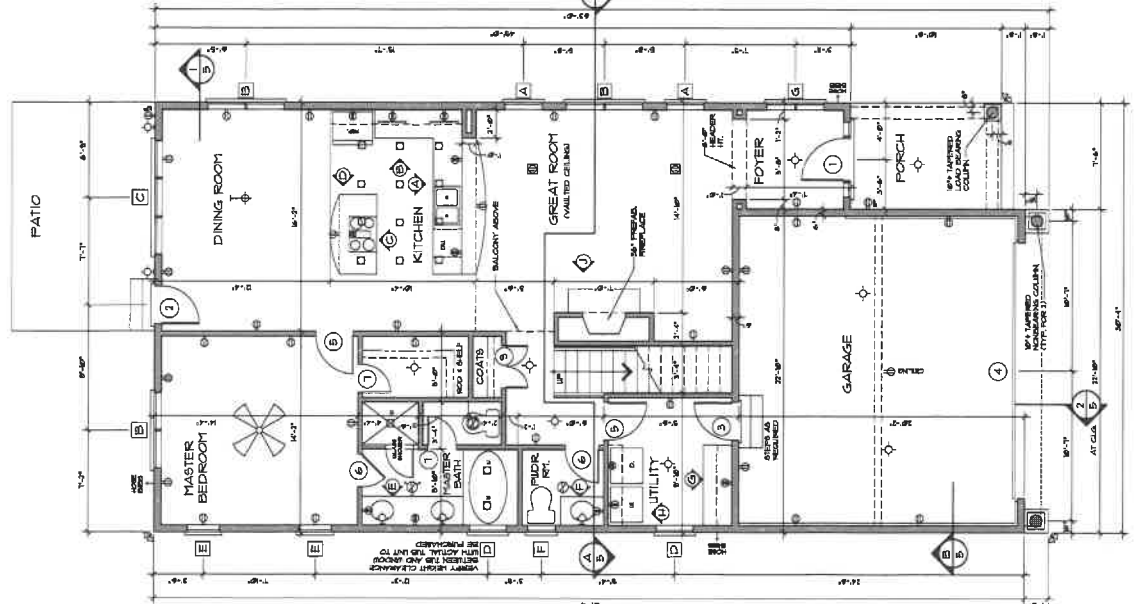
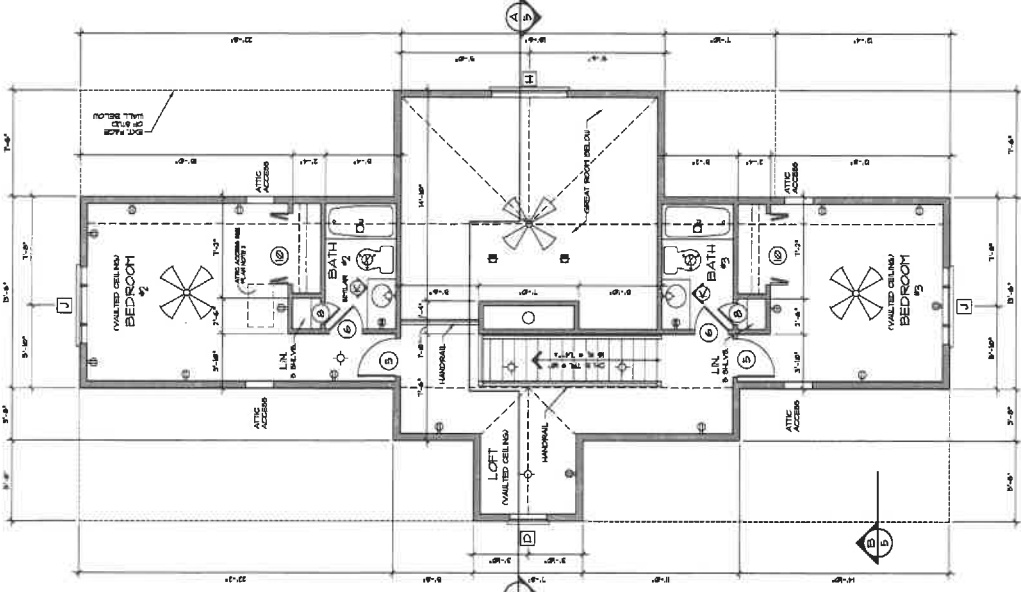


pro posed

Visit www.DAGmarketplace.com for information on interior and exterior products for your home!



FIRST FLOOR PLAN
 1/4" = 1'-0"
 FINISH FLOOR
 FLOOR FINISH
 EXTERIOR FINISH
 GARAGE



SECOND FLOOR PLAN
 1/4" = 1'-0"

DOOR SCHEDULE

MARK	SIZE	GLASS DESCRIPTION	SYMBOL
1	2'-0" x 6'-0"	6" TYPICAL GLASS	1
2	2'-0" x 6'-0"	6" TYPICAL GLASS	2
3	2'-0" x 6'-0"	6" TYPICAL GLASS	3
4	2'-0" x 6'-0"	6" TYPICAL GLASS	4
5	2'-0" x 6'-0"	6" TYPICAL GLASS	5
6	2'-0" x 6'-0"	6" TYPICAL GLASS	6
7	2'-0" x 6'-0"	6" TYPICAL GLASS	7
8	2'-0" x 6'-0"	6" TYPICAL GLASS	8
9	2'-0" x 6'-0"	6" TYPICAL GLASS	9
10	2'-0" x 6'-0"	6" TYPICAL GLASS	10
11	2'-0" x 6'-0"	6" TYPICAL GLASS	11
12	2'-0" x 6'-0"	6" TYPICAL GLASS	12

* SEE ELEVATION FOR FINISH.

WINDOW SCHEDULE

MARK	SIZE	GLASS DESCRIPTION	SYMBOL
1	10'-0" x 7'-0"	10" INSULATED GLAZED UNIT (IGU)	1
2	10'-0" x 7'-0"	10" INSULATED GLAZED UNIT (IGU)	2
3	10'-0" x 7'-0"	10" INSULATED GLAZED UNIT (IGU)	3
4	10'-0" x 7'-0"	10" INSULATED GLAZED UNIT (IGU)	4
5	10'-0" x 7'-0"	10" INSULATED GLAZED UNIT (IGU)	5
6	10'-0" x 7'-0"	10" INSULATED GLAZED UNIT (IGU)	6
7	10'-0" x 7'-0"	10" INSULATED GLAZED UNIT (IGU)	7
8	10'-0" x 7'-0"	10" INSULATED GLAZED UNIT (IGU)	8
9	10'-0" x 7'-0"	10" INSULATED GLAZED UNIT (IGU)	9
10	10'-0" x 7'-0"	10" INSULATED GLAZED UNIT (IGU)	10
11	10'-0" x 7'-0"	10" INSULATED GLAZED UNIT (IGU)	11
12	10'-0" x 7'-0"	10" INSULATED GLAZED UNIT (IGU)	12

* SEE ELEVATION FOR FINISH.

ALL WINDOWS ARE SHOWN WITH INSULATION.
 VERIFY LOCAL CODE REQUIREMENTS PRIOR TO CONSTRUCTION.
 WINDOW MANUFACTURER TO PROVIDE EXPANDED ALUMINUM FINISHES AS REQUIRED BY CODE.
 WINDOW FINISHES TO BE COORDINATED WITH MANUFACTURER'S FINISHES.
 * SEE ELEVATION FOR FINISH.

PLAN NOTES:

- VERIFY ALL FINISHES AND MATERIALS WITH MANUFACTURER.
- VERIFY LOCAL CODE REQUIREMENTS PRIOR TO CONSTRUCTION.
- WINDOW MANUFACTURER TO PROVIDE EXPANDED ALUMINUM FINISHES AS REQUIRED BY CODE.
- WINDOW FINISHES TO BE COORDINATED WITH MANUFACTURER'S FINISHES.
- SEE ELEVATION FOR FINISH.

ELECTRICAL LEGEND

1	COURT LIGHT
2	EXTERIOR LIGHT
3	CEILING LIGHT
4	RECESSED LIGHT
5	TRAY MOUNTED LIGHT
6	CAN MOUNTED LIGHT
7	RECESSED LIGHT
8	TRAY MOUNTED LIGHT
9	CAN MOUNTED LIGHT
10	RECESSED LIGHT
11	TRAY MOUNTED LIGHT
12	CAN MOUNTED LIGHT
13	RECESSED LIGHT
14	TRAY MOUNTED LIGHT
15	CAN MOUNTED LIGHT

REVISIONS

NO.	DATE	DESCRIPTION
1	12/15/14	ISSUED FOR PERMITS

ALL RIGHTS RESERVED BY DONALD A. GARDNER, INC.
 THIS DOCUMENT IS THE PROPERTY OF DONALD A. GARDNER, INC.
 IT IS TO BE USED ONLY FOR THE PROJECT AND NOT TO BE REPRODUCED WITHOUT WRITTEN PERMISSION.

DONALD A. GARDNER, INC.
 P.O. BOX 20178 • GREENVILLE, S.C. 29619
 864.268.7800
[WWW.DONALDGARDNER.COM](http://www.donaldgarden.com)

MODIFICATIONS BY
 DONALD A. GARDNER
 DESIGN SERVICES, LLC

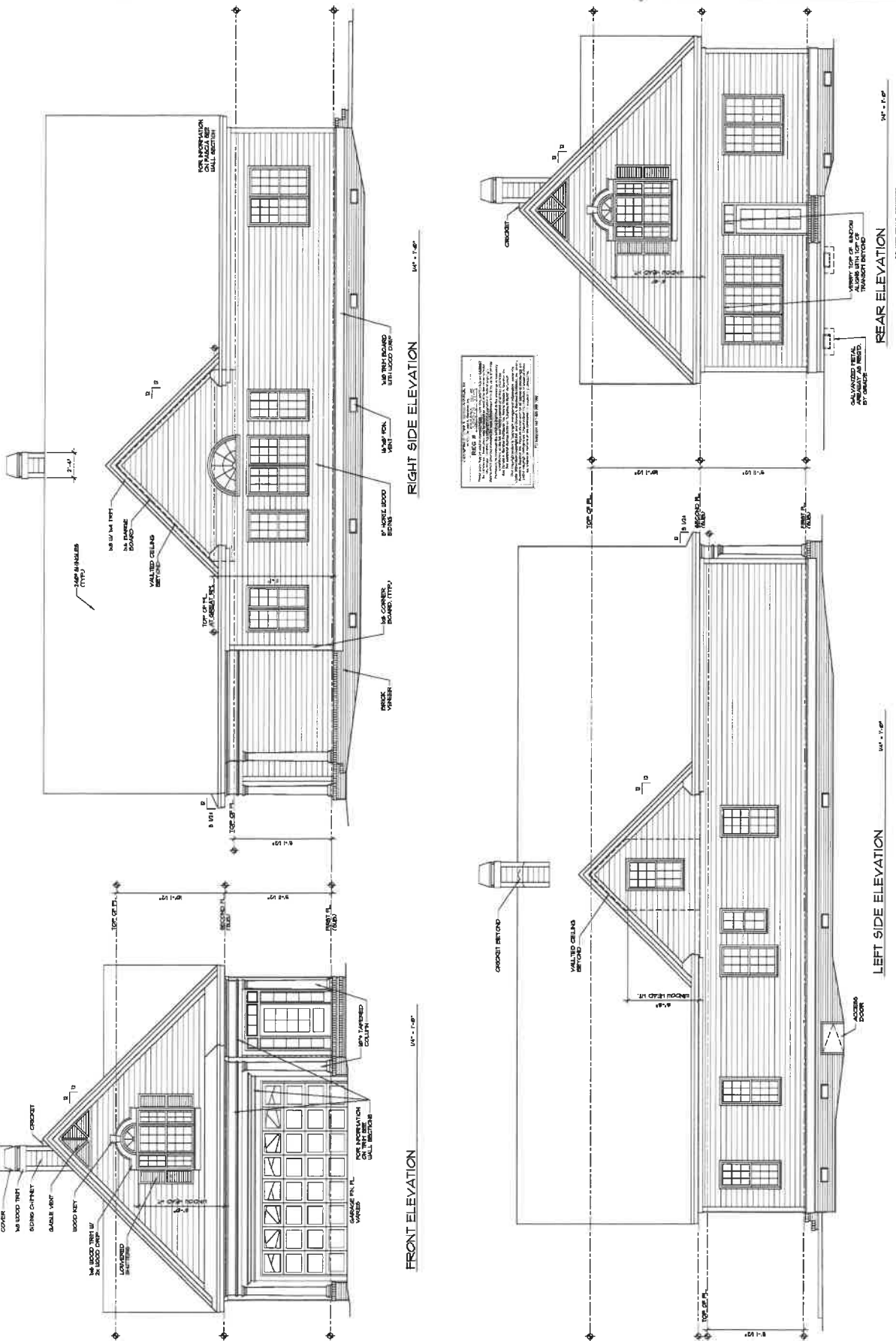
FLOOR PLAN
 SHEET NO. T1209-101-F
 OF 02

CLIMORE
DESIGN NO. 112288-101-1
SHEET 4 OF 4
ELEVATION

DONALD A. GARDNER, INC.
P.O. BOX 20178 • GREENVILLE S.C. • 29610
864 • 288 • 7680
www.dongardner.com

MODIFICATIONS
BY
DONALD A. GARDNER
DESIGN SERVICES, LLC

All prices, sizes, and color codes, dimensions, materials and manufacturers references shall be considered as per the drawings shown, excepted or noted where they are at variance. These plans are not drawn to any particular local, state or national code, or any building codes and are intended for informational purposes only. The contractor shall be responsible for obtaining all applicable codes and manufacturer's requirements.



DISCLAIMER: THE CONTRACTOR SHALL BE RESPONSIBLE FOR OBTAINING ALL APPLICABLE CODES AND MANUFACTURER'S REQUIREMENTS. THESE PLANS ARE NOT DRAWN TO ANY PARTICULAR LOCAL, STATE OR NATIONAL CODE, OR ANY BUILDING CODES AND ARE INTENDED FOR INFORMATIONAL PURPOSES ONLY. THE CONTRACTOR SHALL BE RESPONSIBLE FOR OBTAINING ALL APPLICABLE CODES AND MANUFACTURER'S REQUIREMENTS.

DO NOT SCALE DIMENSIONS. ALL RIGHTS RESERVED BY DONALD A. GARDNER, INC. CONTACT THE ARCHITECT FOR ANY CHANGES TO THE ORIGINAL DRAWING.