



1111 Nantasket Avenue  
Hull, MA 02045

[woodardcurran.com](http://woodardcurran.com)

# HULL, MA WATER POLLUTION CONTROL FACILITY

## NOVEMBER 2023

## MONTHLY OPERATING REPORT



0217319.00

**Town of Hull, MA**

Permit No. MAG590037

## TABLE OF CONTENTS

SECTION	PAGE NO.
<b>EXECUTIVE SUMMARY .....</b>	<b>ES-1</b>
<b>1. FLOWS AND LOADING .....</b>	<b>1-1</b>
1.1 Average Daily Flows and Loadings – November 2023.....	1-1
1.2 Average effluent monthly flows – 2+ year comparison.....	1-2
1.3 One Month Summary of Rainfall and the Influence on Effluent Flows .....	1-3
<b>2. COMPLIANCE .....</b>	<b>2-4</b>
2.1 Plant Effluent.....	2-4
2.2 Secondary Processes.....	2-5
2.3 Permit Compliance .....	2-7
2.4 Solids Handling & Odor Control.....	2-9
<b>3. MAINTENANCE SUMMARY .....</b>	<b>3-1</b>
3.1 Maintenance Summary .....	3-1
<b>4. SAFETY .....</b>	<b>4-1</b>
<b>5. STAFF DEVELOPMENT .....</b>	<b>5-1</b>
5.1 Training .....	5-1
5.2 Staffing Updates .....	5-1
<b>6. COLLECTION SYSTEM .....</b>	<b>6-1</b>
6.1 Wet Well Maintenance.....	6-1
6.2 Collection System Maintenance .....	6-2
<b>7. PROJECT MANAGEMENT &amp; ADMINISTRATION .....</b>	<b>7-1</b>
7.1 Ongoing Projects and Support Items- November Updates: .....	7-1

## EXECUTIVE SUMMARY

**This Monthly Operating Report provides a summary of the pertinent information and activities that occurred at Hull WPCF during the month of November 2023.**

- No lost-time incidents for the month of November.
- There were 144 effluent samples taken in November.
- There were no after-hours alarm calls that required a response by W&C staff.
- The Asset Management Accounts summaries for contract year #9 is attached- the latest revision date is 11/16/2023.
- There was one call from a resident for an E-One grinder pump issue.
- W&C's O&M continued its efforts to support the various ongoing engineering projects and upgrades at the plant- see the projects section.
- The weekly BioBot Covid-19 wastewater sampling & monitoring program continued with W&C staff sampling the raw influent for analysis.

**Woodard & Curran strives to deliver a high-quality operations service and is responsive to our customers' concerns. Please feel free to request any modifications to the format or content of this report.**

Mike Sullivan – Plant Manager  
Town of Hull WPCF  
1/31/2024

## 1. FLOWS AND LOADING



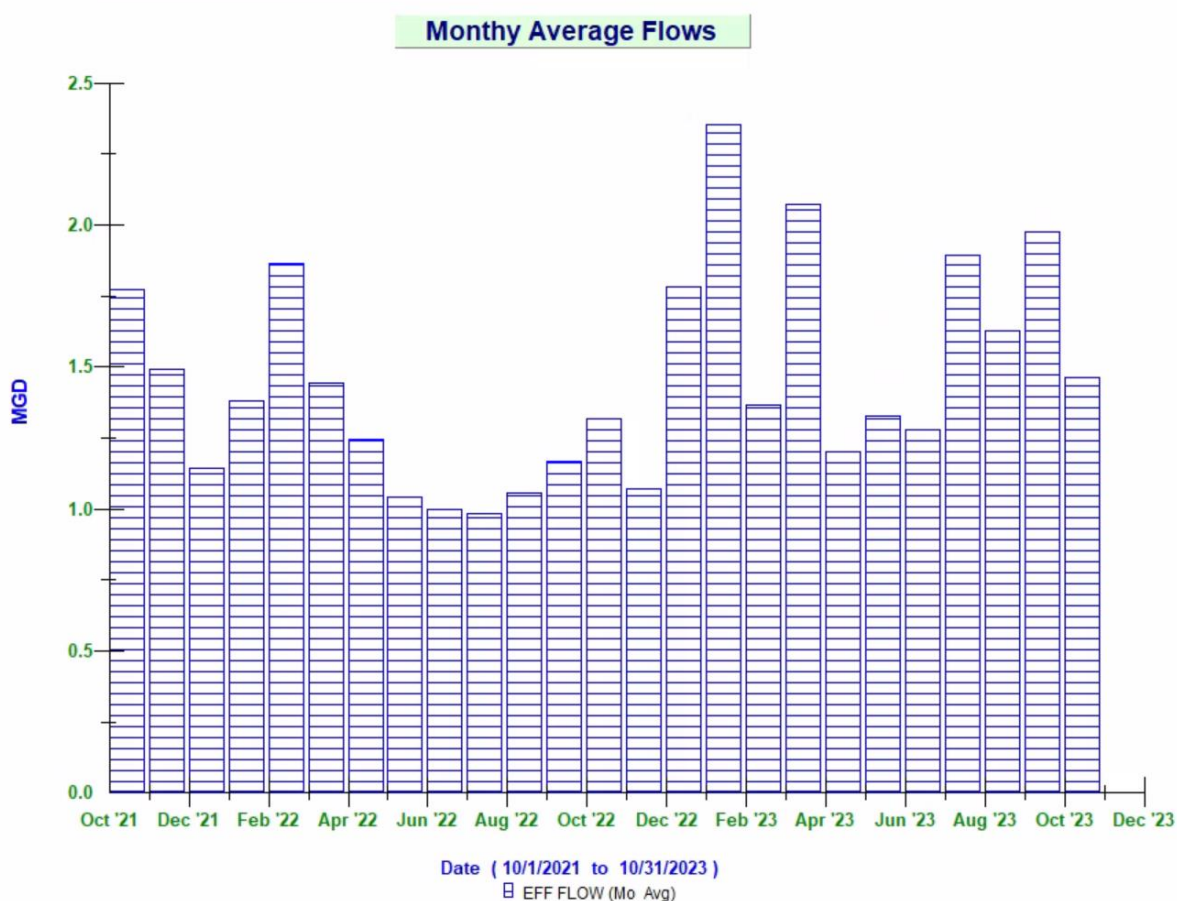
### 1.1 Average Daily Flows and Loadings – November 2023

Month / Year	Eff Flow	Inf Flow	Inf BOD	Inf TSS	Eff BOD	EFF TSS
	MGD	MDG	LBS	LBS	LBS	LBS
Nov '21	1.49	1.54	2,210.73	5,383.55	40.16	86.05
Nov '22	1.07	1.18	1,518.88	1,650.65	32.06	99.48
Nov '23	1.32	2.13	2,957.78	4,498.01	33.44	181.52

\* On-Going -the existing influent flow meters are strap-on doppler flow meters, and the existing pipe condition prevents getting a strong signal. An area velocity meter in the aeration tank inlet channel is used as well as the headworks influent Parshall Flume meter to monitor influent flows. All reported loadings are based on the effluent flow meter [new mag meter April 2021]. All meters are tied into the Scada system so that influent flows can be monitored.

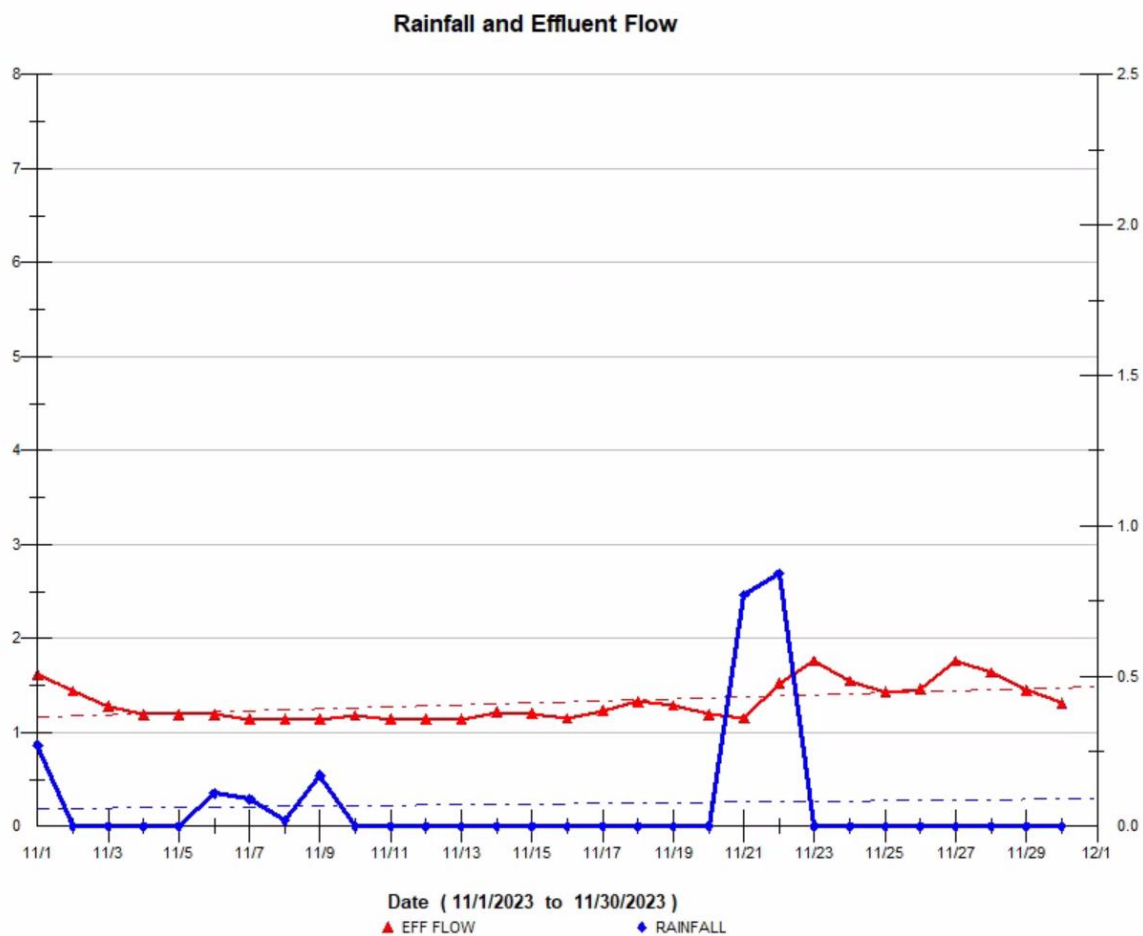
## 1.2 Average effluent monthly flows – 2+ year comparison

The monthly average flow for November was 1.32 MGD, a bit less than the 1.46 MGD in October. The total precipitation for November was 2.27 inches, a bit than October's 2.05 inches, and had no impact on the plant's process conditions. The graph below shows the 2-plus year summary of the monthly average flows.



### 1.3 One Month Summary of Rainfall and the Influence on Effluent Flows

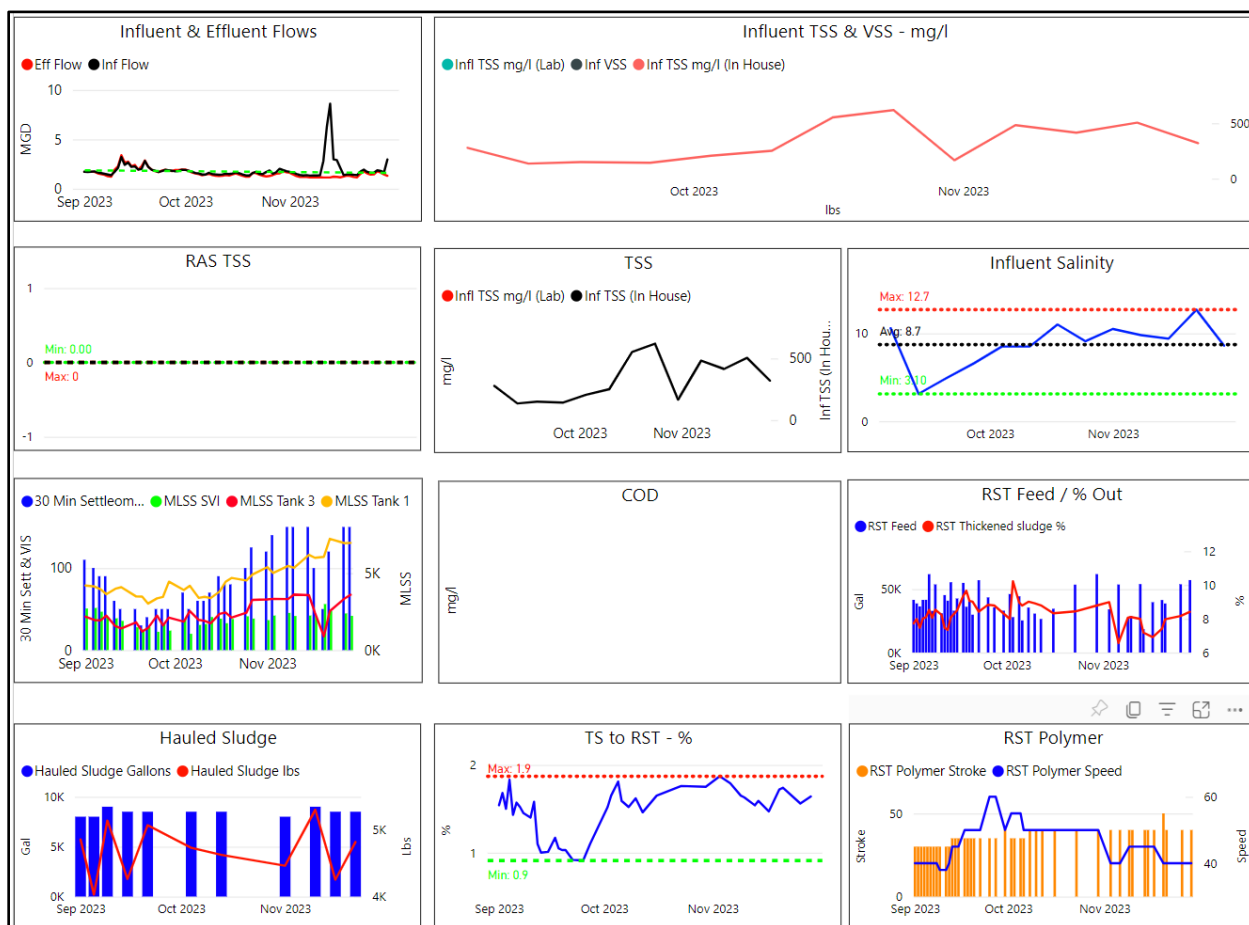
The graph shows the days where precipitation occurred [rainfall] [Blue Peaks].



## 2. COMPLIANCE

### 2.1 Plant Effluent

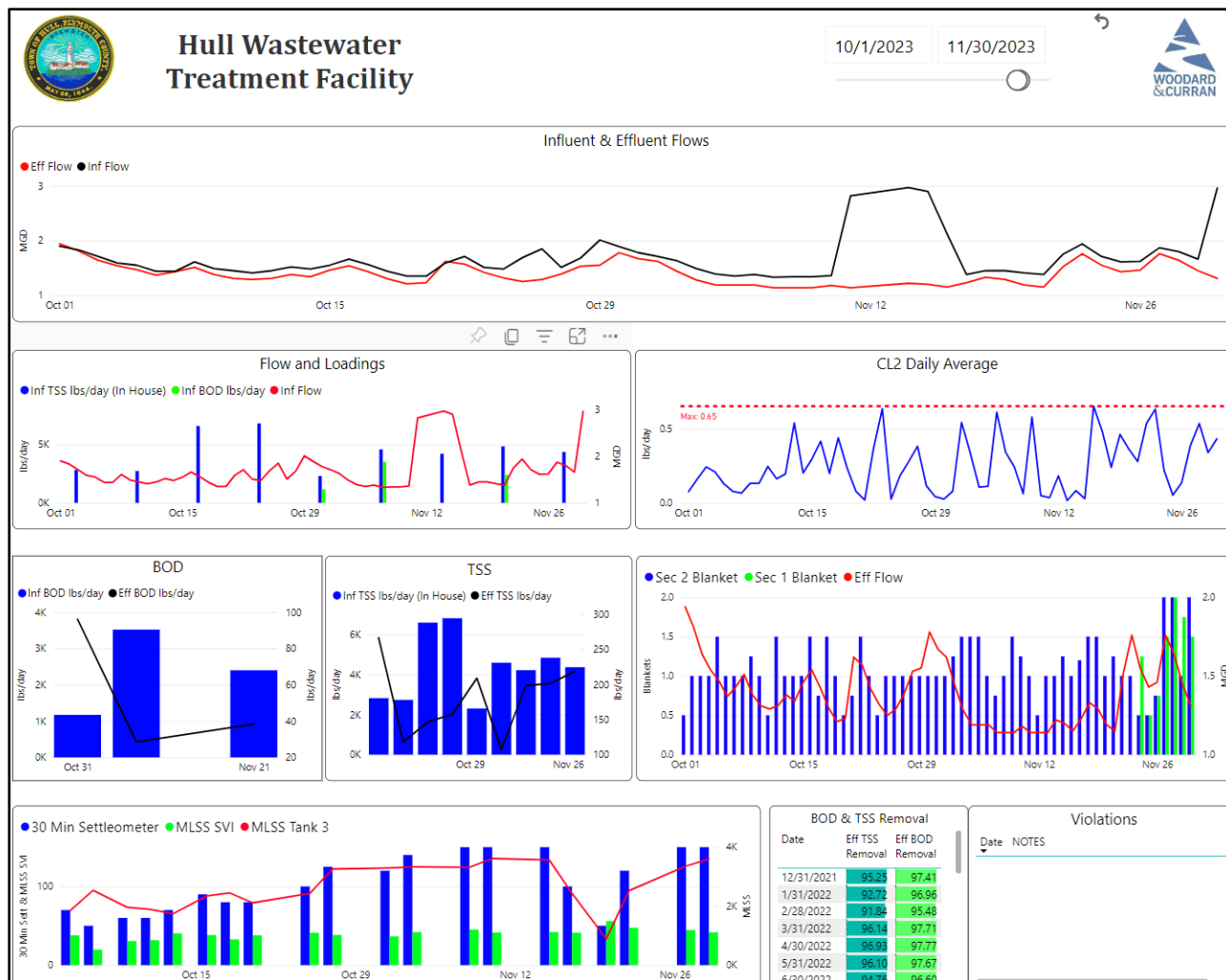
The plant process conditions through November were steady. Below are Process Summary Graphs produced on the Power BI dashboard illustrating trends year-to-date.





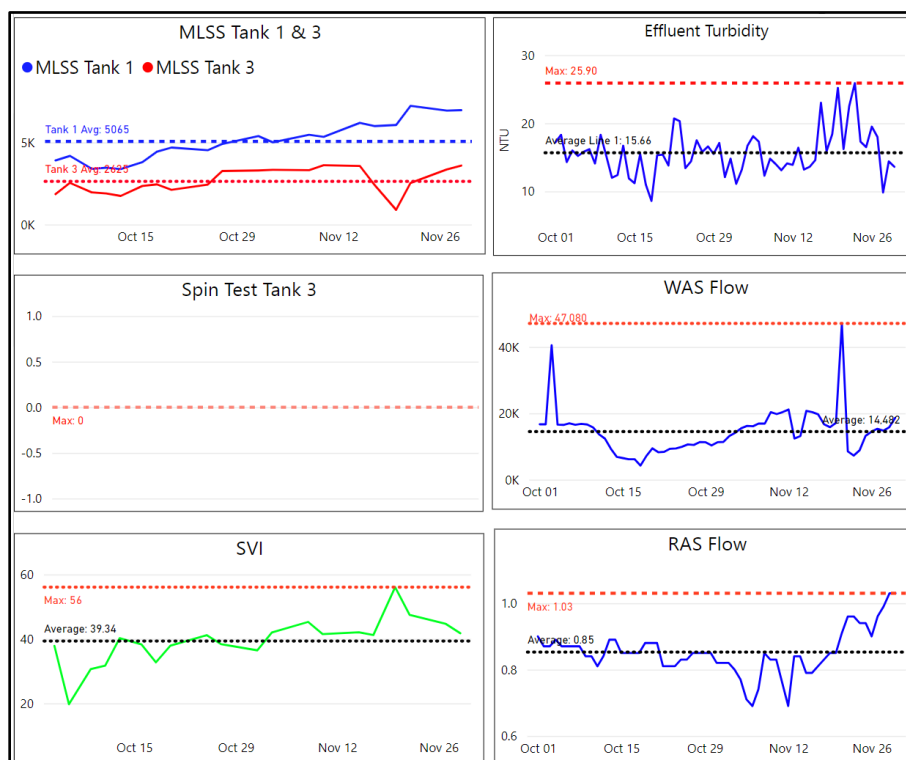
## 2.2 Secondary Processes

Below are Process Summary Graphs produced on the Power BI dashboard illustrating trends over a 2-month period ending on 11-30-2023.





## Secondary Processes continued...



## 2.3 Permit Compliance

There were 144 effluent samples taken in the month of November. A table summarizing the results of these samples is shown below. The quality of effluent was satisfactory, and turbidity (NTU) levels were normal.

<b>Permit Compliance</b>												
<b>Parameter Info</b>			<b>Permit Requirements</b>					<b>Results</b>				
<b>Parameter</b>	<b>Hach WIMS Variable #</b>	<b>Units</b>	<b>Daily Max</b>	<b>Daily Min</b>	<b>Weekly Avg Max</b>	<b>Monthly Avg Max</b>	<b>Freq</b>	<b>Period Avg</b>	<b>Period Min</b>	<b>Period Max</b>	<b># of Samples</b>	<b># of Violation</b>
Eff TSS	104 / 999081	MG/L	50		45	30	1 X Week	17.0	11.3	21.0	4	0
Eff TSS	184	LBS			1152	768	1 X Week	181.5	107.4	218.8	4	0
% TSS Rem	208	%		85			1 X Month	96.1			1	0
Eff BOD	108	MG/L	50		45	30	1 X Week	3.4	3.0	4.0	4	0
Eff BOD	185	LBS			1152	768	1 X Week	33.4	28.5	38.4	2	0
% BOD Rem	207	%		85			1 X Month	98.6			1	0
Eff Chlorine	142	MG/L	1			0.7	3 X Day	0.30	0.02	0.65	90	0
Eff Fecal	111	#/100 ML	260			88	1 X Week	10.0	10.0	10.0	8	0
Eff pH	136	SU	8.5	6.5			1X Daily	7.1	6.8	7.5	30	0
Enterococci	255	#/100 ML	276			35	1 X Week	10	10	10	2	0
<b>Totals</b>											<b>144</b>	<b>0</b>

## Effluent Quality

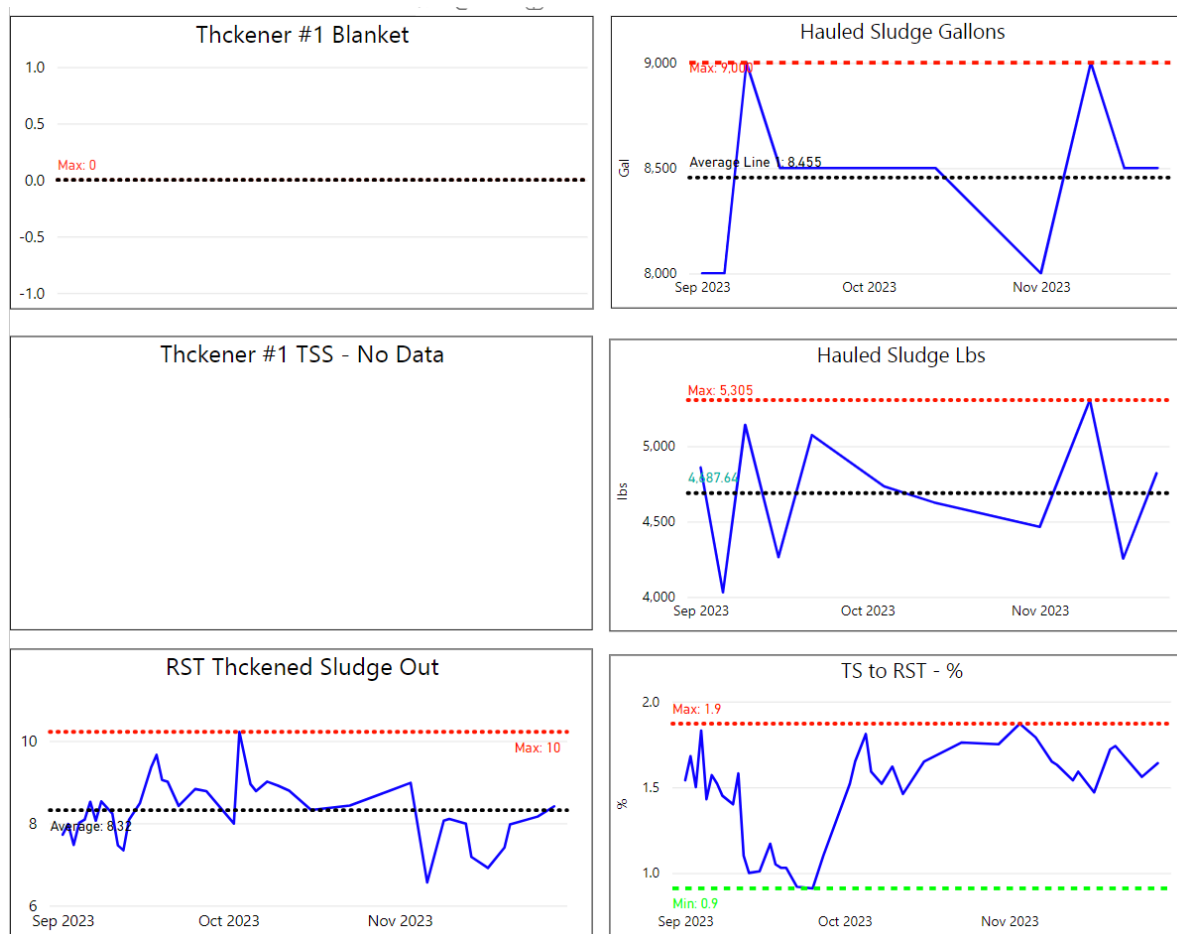


## 2.4 Solids Handling & Odor Control

### Sewage Gallons Treated vs Sludge Disposed

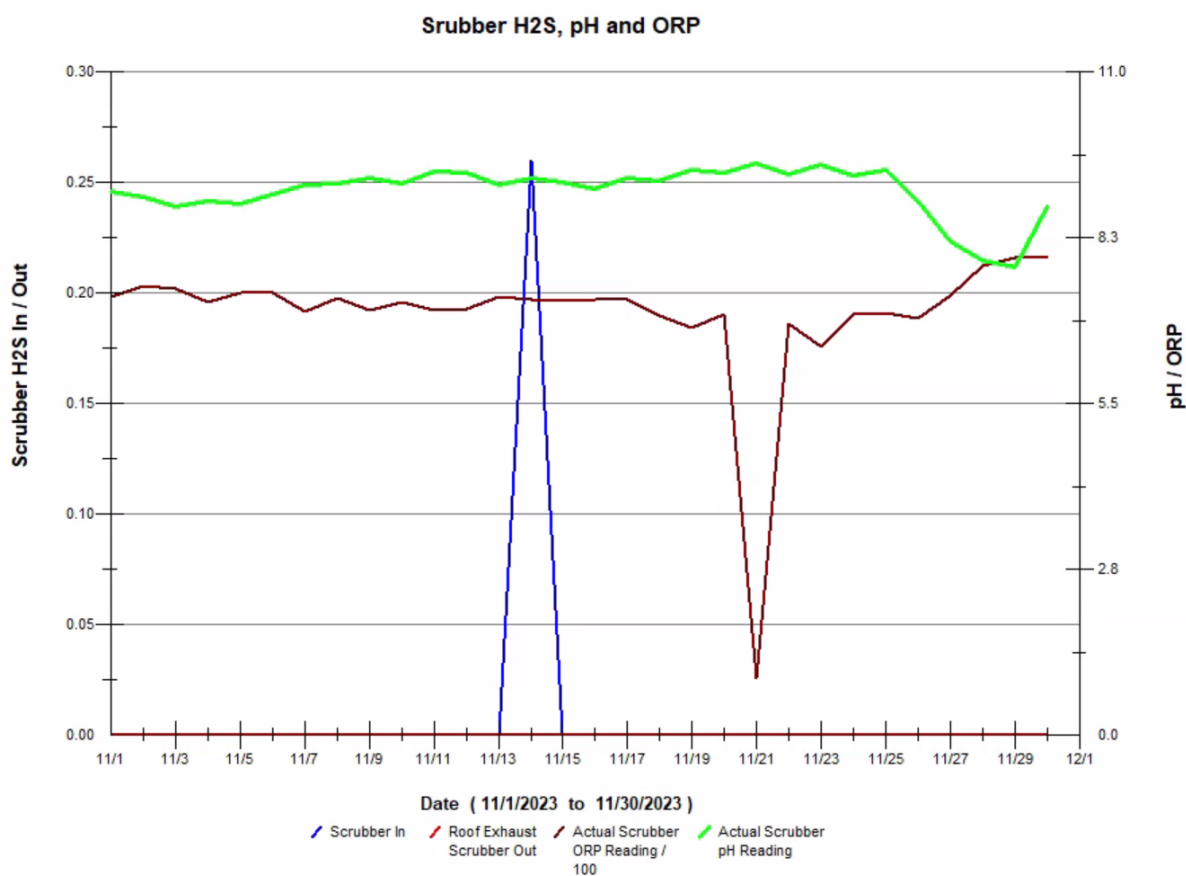
Month	Effluent Treated, MG	Sludge Disposed, Gals
Nov 2021	54.9	68,500
Nov 2022	40.9	17,000
Nov 2023	45.2	17,000

Graphs illustrating sludge/solids handling parameters over a 3-month period (ending 11-30-2023) generated by Power BI are shown below.

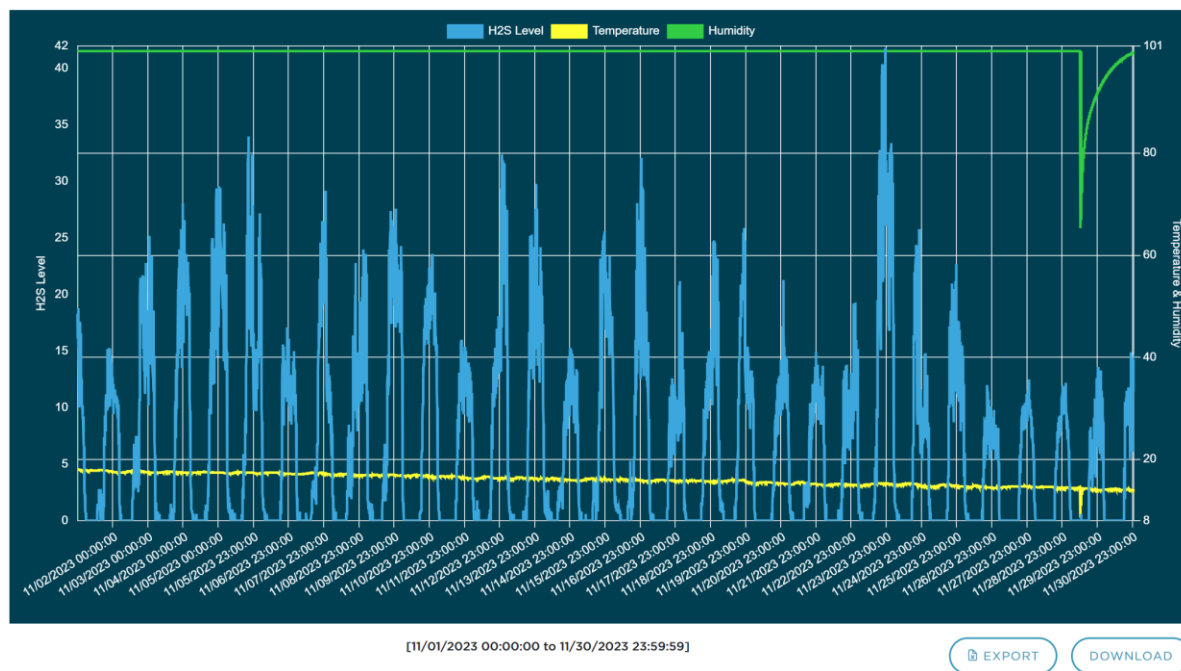


The Bioxide system was on, but the feed rates were minimal, as the normal seasonal temperatures were cooler. Monthly graphs are attached below, and the daily average Bioxide use for November was about 114 gallons per day.

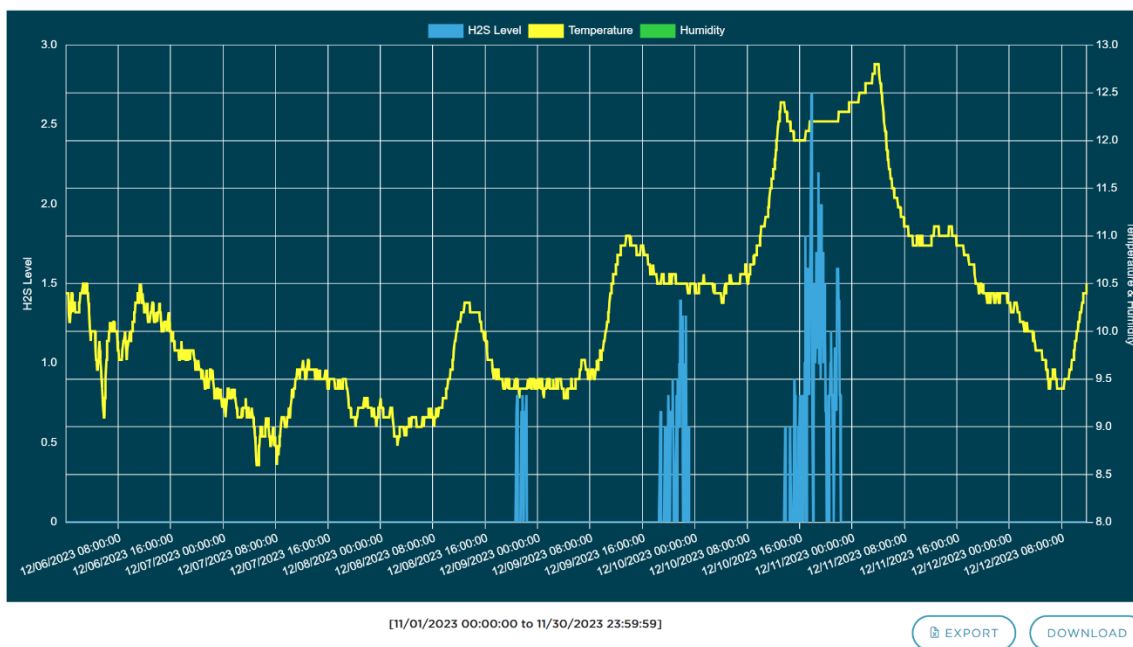
- The "In-Pipe" bacteria containers in the collection system manholes were changed out on November 10th and 26th.
- Slight changes - Hydrogen sulfide (H<sub>2</sub>S) monitoring units were recording and trending on the odor scrubber. [inlet and outlet]. Increased scrubber fan speed slightly. See graph below:



The odor data logging unit at XYZ monitoring locations, recording the overall H<sub>2</sub>S levels close to the plant, are shown in the graph below. During the month of November there was normal H<sub>2</sub>S detected at this monitoring location.



Pump station #3 - H<sub>2</sub>S is monitored at the end of the force main in the manhole at Nantasket Ave & Water Street. Bioxide is added to allow excess nitrate in the sewage system to treat the additional H<sub>2</sub>S from other parts the system – such as PS #4, contributions from lines feeding the interceptor - PS #5, PS #6, PS #9, Spinnaker Island, etc., all the way to the wastewater plant. H<sub>2</sub>S levels through November were minimal with generally mild temps for Fall, and adjustments for substantially less Bioxide feed were made.





### 3. MAINTENANCE SUMMARY

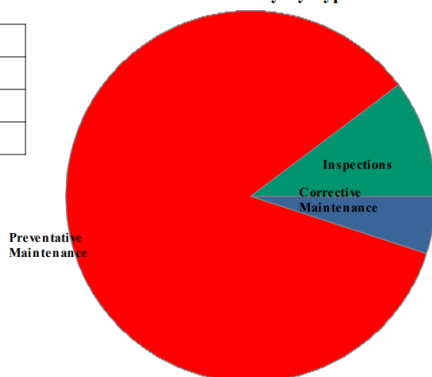


#### Maintenance History Report Hull Wastewater

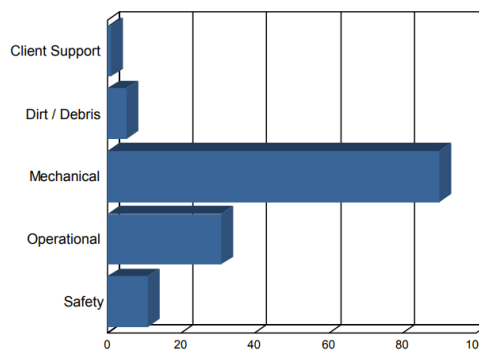
Start Date: 11/1/2023  
End Date: 11/30/2023

Corrective Maintenance	7
Inspections	14
Preventative Maintenance	117
<b>Total Work Orders</b>	<b>138</b>

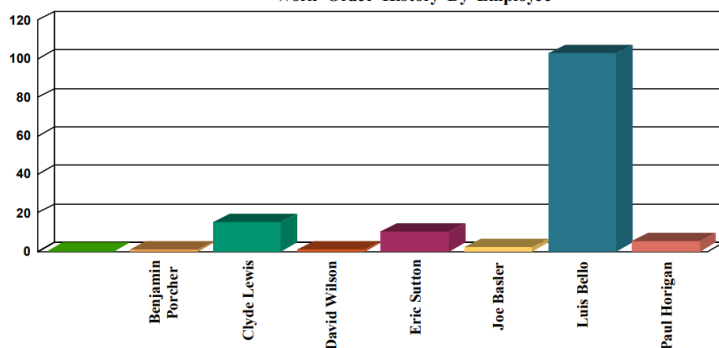
Work Order History By Type



Work Order History by Reason



Work Order History By Employee



Employee	WO Count	Labor Hours
Benjamin Porcher	1	1
Clyde Lewis	15	0
David Wilson	1	0
Eric Sutton	10	4
Joe Basler	2	2
Luis Bello	103	13
Paul Horigan	5	4
Unassigned	1	1
<b>Totals</b>	<b>138</b>	<b>25</b>

**The SEMS monthly work order summary for November is attached for review.**

#### 3.1 Maintenance Summary

- On November 4 the headworks bar screen flex rake was found to be running constantly as the level sensing transducer needed cleaning. Transducer was sensing high inflows falsely and the flex rake was running constantly.
- The Connex storage box parked by Primary Clarifier #1 was moved by Barletta Heavy over to the staging area across Nantasket Ave to allow for more access at the plant for Phase 2 work on November 10.
- Rosano-Davis was called in on November 14 to jet clean lines on Bay Street of grease build up.
- Contracted maintenance provider South Shore Generator was at Pump Station #4 on November 16 to address an oil leak from the emergency generator. The slight leak is underneath the unit and barely noticeable. More importantly, the high cost of the repair is not worth undertaking according to SSG, as the oil 7filter are change twice a year and W&C staff check the unit's oil level when doing the daily station rounds. As well

- On November 18 the SCADA system was showing rather low ORP numbers for the air scrubber system. NaOH, sodium hydroxide and ClO-, hypochlorite are combined in a solution for scrubbing the air. Air bubbles were seen in the hypochlorite supply line, W&C staff took apart the suction and discharge line connections, thoroughly cleaned them up, and shortly after reassembly the ORP level returned to normal.
- W&C's Doug Mort of the info/tech group was onsite November 2 to assist Tom M. and the operations crew with the Do-Forms application and Utility Cloud (UC) access.
- On November 27 subcontractor Door Systems was onsite for two days to install a new electric roll-up door in the garage bay where the hatch to the lower level is located.
- W&C staff unloaded the long wooden shelf in the lower-level hallway and moved it into the old mechanical room so that Barletta could continue with their concrete floor repairs.
- Applied Dynamics was onsite November 28 to repair the hoist by the blower room on the second floor. The wiring to the hand control unit was at issue and the tech shortened the wire's length to successfully repair the unit, saving some time & money.

*Please see the attached summary totals and planned expenditures for the Asset Management accounts for contract year (8). Most recent through 11/21/23.*

#### 4. SAFETY



It is Woodard & Curran's policy to maintain a safe and healthy working environment for all employees and to comply with all applicable occupational health & safety regulations.

- There were no lost time incidents reported for November.
- Monthly PM's - emergency eyewash and shower inspections, fire extinguishers, and emergency lighting inspections completed.
- Monthly calibrations were performed on all MX4 & Max XT11 gas meters.
- W&C's Pure Safety topic for November was Ladder Safety Awareness.
- W&C's monthly safety inspection checklist for the plant and stations was completed.
- The staff's monthly SPARKS safety meeting was held on November 28th, including a look at W&C's monthly "Lessons Learned!" - which is a review of all safety related incidents occurring at other W&C projects.

## **5. STAFF DEVELOPMENT**

### **5.1 Training**

Training is an important part of any operation to ensure that employee health and safety is assured, quality standards are supported, staff skills are improved, career opportunities become available, and higher productivity is achieved.

Listed is a general outline of training that the staff received over the course of the month:

- All staff completed W&C's monthly Pure Safety training module. The staff's monthly SPARKS safety meeting was held on November 29. Topics discussed were forklift operation, sitework trenching, and guarding floor & wall openings on the jobsite. Staff also reviewed the "near-miss" incidents occurring at all W&C projects during the month of October in "Lessons Learned!"

### **5.2 Staffing Updates**

- Plant continues to have weekend coverage supplemented with part-time staffers Roger Boltrushek and Ryan Holman, in addition to Mike S, Joe B, Luis B, Eric S, Clyde L, and Ben P.
- O&M Specialist Paul Horigan continues to assist here at Hull as needed with plant O&M projects as needed.

## 6. COLLECTION SYSTEM

### 6.1 Wet Well Maintenance

Pump stations are maintained by the operations team at the Hull WPCF. Below is a maintenance summary for the pump stations owned by the Town of Hull.

**Table Key:**

"X" – Pump Station Cleaned

■ – Pump Station Inspected

■ – See notes for additional information

blank – No Work Performed

Month	Pump Station							
	A	1	3	4	5	6	9	D
May 2023								
June 2023	X			X				
July 2023								
August 2023								
September 2023								
October 2023								
November 2023								
December 2023								
January 2024								
February 2024								
March 2024								
April 2024								

All pump stations, excluding Pump Station 3 and Station D, have an aerator/mixer in the wet wells.

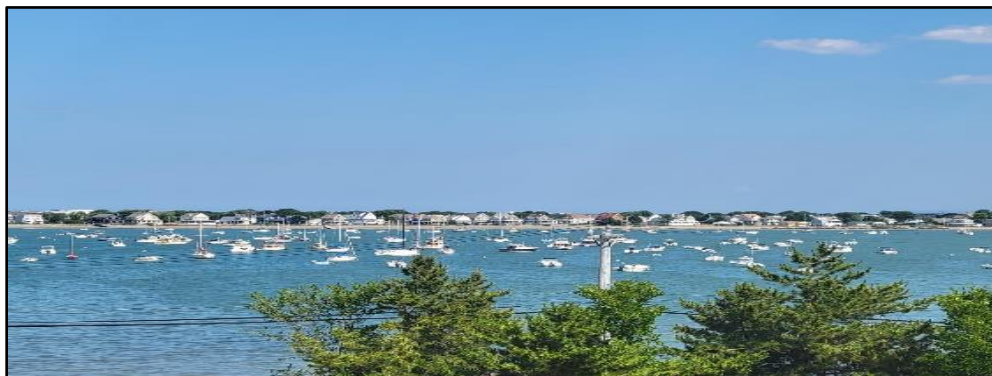
## 6.2 Collection System Maintenance

Collection system work is documented and tracked in Utility Cloud (UC). A summarized report for November has been included as an attachment to the Monthly Operating Report.

Woodard & Curran assisted/conducted camera work and sewer system support in the Hull collection system at the following areas during the month of October. Ongoing backup and blockage call outs requiring an increase in labor and time to support. A summary of W&C's efforts at the various call out locations is as follows:

- There were no calls for E-One Grinder pump service through November.
- On November 1 a resident called for backup, the up and downstream manholes were opened, flow was evident- and the homeowner was advised to call a plumber.
- Pump station emergency generator testing consists of a weekly no load running and a monthly loaded running.
- All Pump station wet wells were inspected in November- monthly station inspections are completed and combined with the monthly station PM's.
- Upload new or updated tie-cards to the UC as required.
- Dig-Safe mark outs are completed throughout the Town of Hull as needed to assist and facilitate scheduled and emergency gas repairs, broken water mains, roadway paving projects, and other residential and town projects. All are listed in the UC summary.
- Dye testing the lateral sewer line at 219 Atlantic Avenue on November 9 & 15 and subsequent CCTVing about 50 feet of line. A new tie-card was created for future reference and uploaded to the Utility Cloud.
- On November 1 W&C staff inspected 12 manholes for a tentative sewer line lining project in the future.
- On November 2nd and 14th the 24 manhole in-pipe units were refilled, new batteries put in if needed, or pump maintenance was done, if any was necessary.
- A cracked manhole cover on Eastern Avenue at Bay Street was replaced and a new rappo ring installed as well on November 21.

## 7. PROJECT MANAGEMENT & ADMINISTRATION



### 7.1 Ongoing Projects and Support Items- November Updates:

- Phase 2 Influent upgrade lead contractor Barletta Heavy Division and other subcontractors are onsite regularly.
- Plant Manager Mike S. and Assistant Plant Manager Joe B. are meeting weekly with John S. and Tom M. to discuss the Hull Sewer Department operations, any treatment plant issues, the collection system maintenance, and any upcoming projects.







[woodardcurran.com](http://woodardcurran.com)



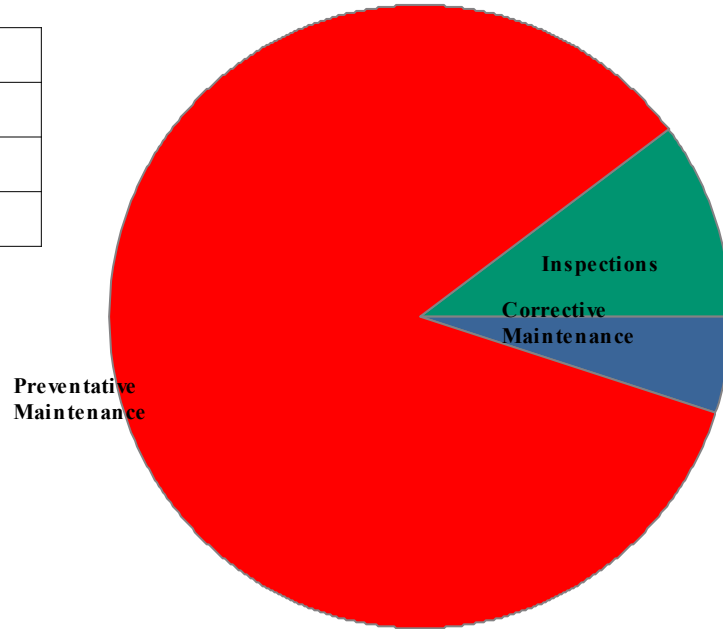
# Maintenance History Report

## Hull Wastewater

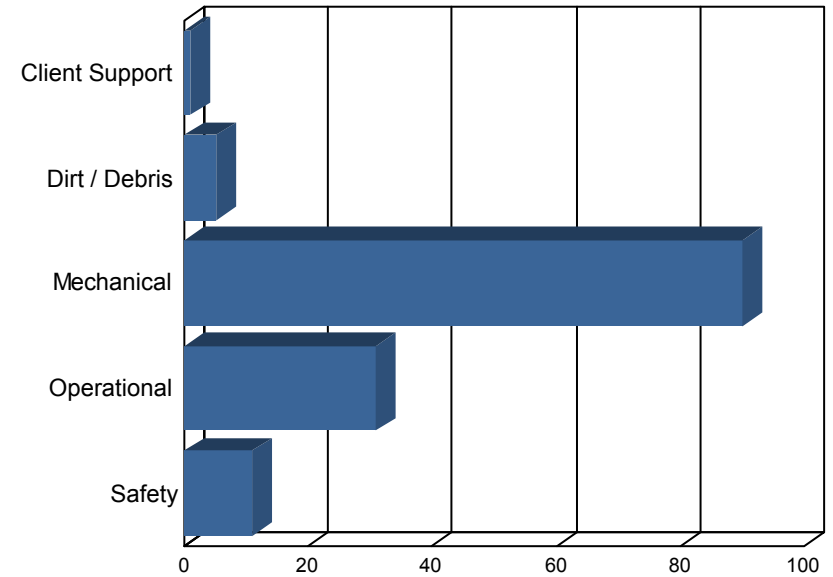
Start Date: 11/1/2023  
End Date: 11/30/2023

Work Order History By Type

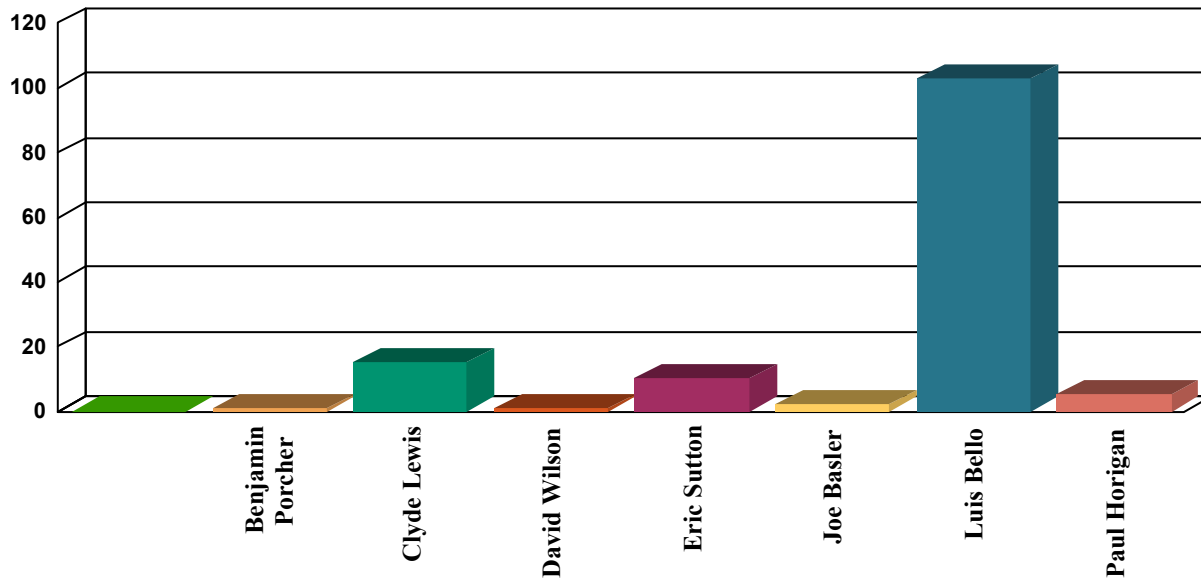
Corrective Maintenance	7
Inspections	14
Preventative Maintenance	117
Total Work Orders	138



Work Order History by Reason



Work Order History By Employee



Employee	WO Count	Labor Hours
Benjamin Porcher	1	1
Clyde Lewis	15	0
David Wilson	1	0
Eric Sutton	10	4
Joe Basler	2	2
Luis Bello	103	13
Paul Horigan	5	4
Unassigned	1	1
Totals	138	25

## Corrective Maintenance

Status Date	WO #	Asset Name	Work Description	Work History Note	Employee	Schedule Date	Status
11/7/23	18789	RAS Pump 3	Low Q	LOTO RAS pump #3 & remove debris in impeller	Joe Basler	11/7/23	Completed
11/12/23	18790	38 - WW Disinfection	Pump failure undervoltage	Took headless spare pump and put scrubber head on pump and put online		11/12/23	Completed
11/13/23	18791	39 - WW Sludge Treatment	Fixed booster pump for RST. The PVC pipe connecting it broke.	Replaced PVC line with new one. LB, and BP were helping.	Paul Horigan	11/13/23	Completed
11/13/23	18792	20 - WW - collections - general	Mark and # MHs to be lined	Es marked and numbered MHs for lining	Eric Sutton	11/13/23	Completed
11/18/23	18793	RAS Pump 3	Low flow	Loto ras # 3 popped pump & removed debris.	Joe Basler	11/18/23	Completed
11/21/23	18794	PS 9 Pump 1	VFD tripped	Es doing station checks observed pump 1 not operating. Called Clyde to assist, ES went down to VFD level (2nd) reset VFD now operational	Eric Sutton	11/21/23	Completed
11/22/23	18796	Hypo Pump Room	Lines were getting airbound because the disinfection pump was pumping hypo out of scrubber pump line, so we had to change the lines.	We alternated the pumps positions.	Luis Bello	11/22/23	Completed

## Inspections

Status Date	WO #	Asset Name	Work Description	Work History Note	Employee	Schedule Date	Status
11/3/23	18328	Blower Room Exhaust Fan 1	Monthly operational inspection		Luis Bello	10/1/23	Completed
11/3/23	18487	Blower Room Exhaust Fan 1	Monthly operational inspection		Luis Bello	11/1/23	Completed
11/3/23	18488	Blower Room Exhaust Fan 2	Monthly operational inspection		Luis Bello	11/1/23	Completed
11/3/23	18329	Blower Room Exhaust Fan 2	Monthly operational inspection		Luis Bello	10/1/23	Completed
11/16/23	18345	Emergency Lighting & exit signs	Emergency Lighting Inspection - Monthly		Benjamin Porcher	11/8/23	Completed
11/21/23	18188	30 - WW Treatment Plant - General	Monthly H&S Inspection		Luis Bello	10/2/23	Completed
11/21/23	18279	Truck 1 - 2010 Dodge Ram 1500	Monthly vehicle inspection on do-Forms	It will be done with next pm.	Luis Bello	10/2/23	Completed
11/21/23	18303	Truck 3 - 2015 Chevy 3500 HD	Monthly vehicle inspection on do-Forms	It will be completed with the next pm.	Luis Bello	10/2/23	Completed
11/21/23	18304	Truck 4 - 2015 Nissan Frontier	Monthly vehicle inspection on do-Forms	It will be completed with the next pm.	Luis Bello	10/2/23	Completed
11/22/23	18339	30 - WW Treatment Plant - General	Monthly H&S Inspection	Completed	Luis Bello	11/6/23	Completed
11/27/23	18467	Truck 4 - 2015 Nissan Frontier	Monthly vehicle inspection on do-Forms	Not done, it will be completed next month.	Luis Bello	11/6/23	Completed
11/27/23	18466	Truck 3 - 2015 Chevy 3500 HD	Monthly vehicle inspection on do-Forms	Not completed, it will be done next month.	Luis Bello	11/6/23	Completed
11/27/23	18456	Truck 2 - 2009 Chevy 2500 HD	Monthly vehicle inspection on do-Forms	Not done, it will be completed next month.	Luis Bello	11/6/23	Completed
11/27/23	18443	Truck 1 - 2010 Dodge Ram 1500	Monthly vehicle inspection on do-Forms	Not completed, it will be done next month.	Luis Bello	11/6/23	Completed

## Preventative Maintenance

Status Date	WO #	Asset Name	Work Description	Work History Note	Employee	Schedule Date	Status
11/1/23	18354	Influent Sluice Isolation Gate	Weekly operate through full range		Eric Sutton	11/1/23	Completed
11/1/23	18401	PS 1 Generator	PS #1 Generator Inspection and Load Test - Monthly	LB,CL,ES, splitted stations.	Luis Bello	11/1/23	Completed
11/1/23	18402	PS 1 Generator	PS #1 Generator Inspection and Test - Weekly	LB,ES,CL, splitted the stations.	Luis Bello	11/1/23	Completed
11/1/23	18407	PS 3 Generator	PS #3 Generator Inspection and Test - Weekly	CL,LB,ES, splitted stations.	Luis Bello	11/1/23	Completed
11/1/23	18413	PS 4 Generator	PS #4 Generator Inspection and Load Test - Monthly	LB,CL,ES, splitted stations.	Luis Bello	11/1/23	Completed
11/1/23	18414	PS 4 Generator	PS #4 Generator Inspection and Test - Weekly		Luis Bello	11/1/23	Completed
11/1/23	18425	PS 9 Generator	PS #9 Generator Inspection and Load Test - Monthly		Luis Bello	11/1/23	Completed
11/1/23	18426	PS 9 Generator	PS #9 Generator Inspection and Test - Weekly		Luis Bello	11/1/23	Completed
11/1/23	18431	PS 6 Generator	PS #6 Generator Inspection and Test - Weekly		Luis Bello	11/1/23	Completed
11/1/23	18436	PS 6 Generator	PS #5 Generator Inspection and Load Test - Monthly		Luis Bello	11/1/23	Completed
11/1/23	18283	PS Kholer Trailer Mounted Generator	Generator Weekly - Test Run no load		Luis Bello	10/30/23	Completed
11/1/23	18419	PS 5 Generator	PS #5 Generator Inspection and Test - Weekly		Luis Bello	11/1/23	Completed
11/1/23	18424	PS 5 Generator	PS #5 Generator Inspection and Load Test - Monthly	LB,CL,ES, splitted stations.	Luis Bello	11/1/23	Completed
11/1/23	18319	Generators "All Pump Station"	Generator Weekly - Test Run no load	LB,ES,CL, splitted stations.	Luis Bello	10/30/23	Completed
11/2/23	18309	High level floats	Weekly High Float Alarm test		Luis Bello	10/29/23	Completed
11/2/23	18247	PS 1 Generator	PS #1 Generator Inspection and Test - Weekly	LB,CL,ES, splitted stations.	Luis Bello	10/25/23	Completed
11/2/23	18251	PS 3 Generator	PS #3 Generator Inspection and Test - Weekly	LB,CL,ES, splitted stations.	Luis Bello	10/25/23	Completed
11/2/23	18257	PS 4 Generator	PS #4 Generator Inspection and Test - Weekly	LB,CL,ES, splitted stations.	Luis Bello	10/25/23	Completed
11/2/23	18267	PS 9 Generator	PS #9 Generator Inspection and Test - Weekly	ES,CL, split stations.	Luis Bello	10/25/23	Completed
11/2/23	18271	PS 6 Generator	PS #6 Generator Inspection and Test - Weekly	LB,ES,CL, splitted stations.	Luis Bello	10/25/23	Completed
11/2/23	18282	PS Kholer Trailer Mounted Generator	Generator Weekly - Test Run no load	LB,ES,CL, splitted stations.	Luis Bello	10/23/23	Completed
11/2/23	18261	PS 5 Generator	PS #5 Generator Inspection and Test - Weekly	LB,ES,CL, splitted stations.	Luis Bello	10/25/23	Completed
11/2/23	18318	Generators "All Pump Station"	Generator Weekly - Test Run no load	LB,ES,CL, splitted stations.	Luis Bello	10/23/23	Completed
11/3/23	18200	Generator #2 - Backup Detroit 500	Generator Weekly - Test Run no load	Didnt got a chance to do it this week, it will be done the next week.	Luis Bello	10/30/23	Completed
11/3/23	18412	PS 3 Generator	PS #3 Generator Inspection and Load Test - Monthly	CL,LB,ES, splitted stations.	Luis Bello	11/1/23	Completed
11/3/23	18218	Aeration Blower 1	Aeration Blower #1 Air Filter Inspection - monthly		Luis Bello	10/24/23	Completed
11/6/23	18068	Influent Pump 1	Influent Pump #1 PM & Inspection - SEMI ANNUAL		Luis Bello	9/4/23	Completed

## Preventative Maintenance

Status Date	WO #	Asset Name	Work Description	Work History Note	Employee	Schedule Date	Status
11/6/23	18071	Influent Pump 2	Influent Pump #2 PM & Inspection - SEMI ANNUAL		Luis Bello	9/4/23	Completed
11/6/23	18363	Influent Pump 3	Monthly Check Pump Couplings		Luis Bello	11/1/23	Completed
11/6/23	18072	Influent Pump 3	Influent Pump #3 PM & Inspection - SEMI ANNUAL		Luis Bello	9/4/23	Completed
11/6/23	18362	Influent Pump 2	Monthly Check Pump Couplings		Luis Bello	11/1/23	Completed
11/6/23	18361	Influent Pump 1	Monthly Check Pump Couplings		Luis Bello	11/1/23	Completed
11/7/23	18076	Influent Pump 5	Influent Pump #5 PM & Inspection - SEMI ANNUAL		Luis Bello	9/4/23	Completed
11/8/23	18075	Influent Pump 4	Influent Pump #4 PM & Inspection -SEMI ANNUAL		Luis Bello	9/4/23	Completed
11/9/23	18468	High level floats	Weekly High Float Alarm test		Luis Bello	11/5/23	Completed
11/9/23	18481	All Plant Gear box reducers	GEAR BOX MAINT - WEEKLY		Luis Bello	11/5/23	Completed
11/9/23	18355	Influent Sluice Isolation Gate	Weekly operate through full range	No body did it that week, but it was done with next pm.	Luis Bello	11/8/23	Completed
11/13/23	18215	Influent Pump 3	Monthly Check Pump Couplings	This was done with novembers pm.	Luis Bello	10/4/23	Completed
11/13/23	18276	PS D - DPW Stormwater Pump Station	Generator Monthly test run	There is no generator at station D	Luis Bello	10/1/23	Completed
11/13/23	18325	PS Onan Trailer mounted generator	Montly operational test run	This was done with another pm.	Luis Bello	10/1/23	Completed
11/13/23	18373	Wet Scrubber System	Clean and Calibration	Paul Horrigan showed Luis Bello how to do it.	Paul Horigan	11/1/23	Completed
11/13/23	18490	ATI Wet Hydrogen Sulfide Monitor Exhaust	System Maintenance		Luis Bello	11/1/23	Completed
11/13/23	18330	ATI Wet Hydrogen Sulfide Monitor Intake	System maintenace	PH teached LB how to do it.	Luis Bello	10/1/23	Completed
11/13/23	18489	ATI Wet Hydrogen Sulfide Monitor Intake	System maintenace		Luis Bello	11/1/23	Completed
11/13/23	18331	ATI Wet Hydrogen Sulfide Monitor Exhaust	System Maintenance	PH, thought me how to do it.	Luis Bello	10/1/23	Completed
11/13/23	18403	PS 1 Generator	PS #1 Generator Inspection and Test - Weekly	CL did this, I am just closing the work orded.	Luis Bello	11/8/23	Completed
11/13/23	18408	PS 3 Generator	PS #3 Generator Inspection and Test - Weekly	CL did this, I am just closin work order.	Luis Bello	11/8/23	Completed
11/13/23	18415	PS 4 Generator	PS #4 Generator Inspection and Test - Weekly	CL did this, I am just closing the work order.	Luis Bello	11/8/23	Completed
11/13/23	18427	PS 9 Generator	PS #9 Generator Inspection and Test - Weekly	CL did this, I a, just closing work order.	Luis Bello	11/8/23	Completed
11/13/23	18432	PS 6 Generator	PS #6 Generator Inspection and Test - Weekly	CL DID this, I am just closing the work order.	Luis Bello	11/8/23	Completed
11/13/23	18445	PS Kholer Trailer Mounted Generator	Generator Weekly - Test Run no load		Clyde Lewis	11/13/23	Completed
11/13/23	18420	PS 5 Generator	PS #5 Generator Inspection and Test - Weekly	CL did this, I am just closing work order.	Luis Bello	11/8/23	Completed
11/13/23	18478	Generators "All Pump Station"	Generator Weekly - Test Run no load		Clyde Lewis	11/13/23	Completed
11/13/23	18225	Wet Scrubber System	Clean and Calibration	PH, was showing me how to do it.	Luis Bello	10/1/23	Completed

## Preventative Maintenance

Status Date	WO #	Asset Name	Work Description	Work History Note	Employee	Schedule Date	Status
11/14/23	18350	Generator #1- Emergency Kohler 750	Generator Weekly - Test Run no load		Luis Bello	11/13/23	Completed
11/14/23	18346	Generator #2 - Backup Detroit 500	Generator Weekly - Test Run no load		Luis Bello	11/13/23	Completed
11/16/23	18469	High level floats	Weekly High Float Alarm test	JB,BP	Luis Bello	11/12/23	Completed
11/16/23	18482	All Plant Gear box reducers	GEAR BOX MAINT - WEEKLY	JB, BP	Luis Bello	11/12/23	Completed
11/16/23	18356	Influent Sluice Isolation Gate	Weekly operate through full range		Luis Bello	11/15/23	Completed
11/16/23	18368	Secondary Clarifier 1	Clean Launder Screens - Quarterly	The clarifier is offline, also, we dont do it anymore because it clogs up the plant water strainer.	Luis Bello	11/6/23	Completed
11/16/23	18369	Secondary Clarifier 2	Clean Launder Screens - Quarterly	We dont do this anymore, it will clog up the plant water strainer.	Luis Bello	11/6/23	Completed
11/16/23	18311	Recirculation pump #1	Monthly Check Pump Couplings		Luis Bello	10/4/23	Completed
11/20/23	18404	PS 1 Generator	PS #1 Generator Inspection and Test - Weekly		Clyde Lewis	11/15/23	Completed
11/20/23	18409	PS 3 Generator	PS #3 Generator Inspection and Test - Weekly		Clyde Lewis	11/15/23	Completed
11/20/23	18416	PS 4 Generator	PS #4 Generator Inspection and Test - Weekly		Clyde Lewis	11/15/23	Completed
11/20/23	18421	PS 5 Generator	PS #5 Generator Inspection and Test - Weekly		Clyde Lewis	11/15/23	Completed
11/20/23	18433	PS 6 Generator	PS #6 Generator Inspection and Test - Weekly		Clyde Lewis	11/15/23	Completed
11/20/23	18428	PS 9 Generator	PS #9 Generator Inspection and Test - Weekly		David Wilson	11/15/23	Completed
11/20/23	18405	PS 1 Generator	PS #1 Generator Inspection and Test - Weekly		Clyde Lewis	11/22/23	Completed
11/20/23	18410	PS 3 Generator	PS #3 Generator Inspection and Test - Weekly		Clyde Lewis	11/22/23	Completed
11/20/23	18417	PS 4 Generator	PS #4 Generator Inspection and Test - Weekly		Clyde Lewis	11/22/23	Completed
11/20/23	18429	PS 9 Generator	PS #9 Generator Inspection and Test - Weekly		Clyde Lewis	11/22/23	Completed
11/20/23	18434	PS 6 Generator	PS #6 Generator Inspection and Test - Weekly		Clyde Lewis	11/22/23	Completed
11/20/23	18446	PS Kholer Trailer Mounted Generator	Generator Weekly - Test Run no load		Clyde Lewis	11/20/23	Completed
11/20/23	18422	PS 5 Generator	PS #5 Generator Inspection and Test - Weekly		Clyde Lewis	11/22/23	Completed
11/20/23	18479	Generators "All Pump Station"	Generator Weekly - Test Run no load		Clyde Lewis	11/20/23	Completed
11/20/23	18222	Effluent Pumps	Effluent Pump - Monthly		Luis Bello	10/15/23	Completed
11/20/23	18223	Effluent Pumps	Effluent Pump Semi-Annual valve exercise		Luis Bello	10/6/23	Completed
11/20/23	18224	Effluent Pump 1	Isolation Valve Exercise		Luis Bello	10/6/23	Completed
11/20/23	18296	Effluent Pump #1 discharge valve	Isolation Valve Exercise		Luis Bello	10/6/23	Completed
11/20/23	18297	Effluent Pump #2 discharge valve	Isolation Valve Exercise		Luis Bello	10/6/23	Completed

## Preventative Maintenance

Status Date	WO #	Asset Name	Work Description	Work History Note	Employee	Schedule Date	Status
11/20/23	18298	Effluent Pump #3 discharge valve	Isolation Valve Exercise		Luis Bello	10/6/23	Completed
11/20/23	18299	Effluent Pump #4 discharge valve	Isolation Valve Exercise		Luis Bello	10/6/23	Completed
11/21/23	18351	Generator #1- Emergency Kohler 750	Generator Weekly - Test Run no load		Luis Bello	11/20/23	Completed
11/21/23	18347	Generator #2 - Backup Detroit 500	Generator Weekly - Test Run no load		Luis Bello	11/20/23	Completed
11/21/23	18470	High level floats	Weekly High Float Alarm test	Completed	Eric Sutton	11/19/23	Completed
11/21/23	18313	pH meter	Clean and Calibrate	Not done, it will be completed with the next pm.	Luis Bello	10/1/23	Completed
11/21/23	18273	Plant Water Pump 2	Monthly Check Pump Couplings	Not completed, it will be done with next pm.	Luis Bello	10/4/23	Completed
11/21/23	18314	ORP meter	Clean and Calibrate	Not completed, it will be done with next pm.	Luis Bello	10/10/23	Completed
11/21/23	18281	PS Kholer Trailer Mounted Generator	Generator Weekly - Test Run no load	Will be completed with next pm.	Luis Bello	10/16/23	Completed
11/21/23	18442	GODWIN Portable Pump	Test Run Godwin Pump-Monthly	Cant be done because the bypass lines are not connected.	Luis Bello	11/1/23	Completed
11/21/23	18364	Influent Pump 4	Monthly Check Pump Couplings	It was done, but I cant remember the date .	Luis Bello	11/1/23	Completed
11/21/23	18365	Influent Pump 5	Monthly Check Pump Couplings	It was done, but I cant remember the date.	Luis Bello	11/1/23	Completed
11/22/23	18357	Influent Sluice Isolation Gate	Weekly operate through full range		Eric Sutton	11/22/23	Completed
11/22/23	18483	All Plant Gear box reducers	GEAR BOX MAINT - WEEKLY		Luis Bello	11/19/23	Completed
11/22/23	18795	Hypo Pump Room	We need to use as much hypo as we can while we wait for hypo delivery.	Pumped hypo from tank #1 to tank #2	Luis Bello	11/22/23	Completed
11/27/23	18485	PS Onan Trailer mounted generator	Montly operational test run	Completed as. Requested	Paul Horigan	11/1/23	Completed
11/27/23	18340	Portable Generator - Honda	Portable Generator Inspection - Monthly	Completed as requested	Paul Horigan	11/1/23	Completed
11/27/23	18455	Parts Washer	Parts Washer PM - Annual	Filter change not needed, no usage	Paul Horigan	11/9/23	Completed
11/27/23	18476	ORP meter	Clean and Calibrate	Not completed, it wont calibrate.	Luis Bello	11/10/23	Completed
11/27/23	18444	PS Kholer Trailer Mounted Generator	Generator - Monthly Load Test	It was completed, but I am not sure who did it, and when.	Luis Bello	11/5/23	Completed
11/27/23	18477	Generators "All Pump Station"	Generator - Monthly Load Test	They were done, but I am not sure who did then, and when.	Luis Bello	11/5/23	Completed
11/27/23	18349	Generator #1- Emergency Kohler 750	Generator - Monthly Load Test	Not completed, it will be done next month.	Luis Bello	11/5/23	Completed
11/27/23	18472	Meters - 4 Gas Confined Space #2	4 gas meter calibration - monthly		Luis Bello	11/1/23	Wating for Parts
11/27/23	18437	Plant Water Pump 2	Monthly Check Pump Couplings	Not completed, it will be done next month.	Luis Bello	11/1/23	Completed
11/27/23	18383	Primary Sludge Pump 1	Monthly Check Pump Couplings	The pumps havent been used for a while, couplings havent been worn out.	Luis Bello	11/1/23	Completed
11/27/23	18384	Primary Sludge Pump 2	Monthly Check Pump Couplings	Pumps havent been used on a while, the coupling havent been worn out.	Luis Bello	11/1/23	Completed



## Preventative Maintenance

Status Date	WO #	Asset Name	Work Description	Work History Note	Employee	Schedule Date	Status
11/27/23	18381	RST Feed Pump 1	Monthly Check Pump Couplings	Not done, it will be completed next month.	Luis Bello	11/1/23	Completed
11/27/23	18473	Recirculation pump #1	Monthly Check Pump Couplings	Not done, it will be completed next month.	Luis Bello	11/1/23	Completed
11/27/23	18385	Sludge Transfer Pump 1	Monthly Check Pump Couplings	Not completed, It will be done next month.	Luis Bello	11/1/23	Completed
11/27/23	18386	Sludge Transfer Pump 2	Monthly Check Pump Couplings	Not completed, it will be done next month.	Luis Bello	11/1/23	Completed
11/27/23	18475	pH meter	Clean and Calibrate	It wont calibrate, can not be completed.	Luis Bello	11/1/23	Completed
11/27/23	18406	PS 1 Generator	PS #1 Generator Inspection and Test - Weekly		Eric Sutton	11/29/23	Completed
11/27/23	18411	PS 3 Generator	PS #3 Generator Inspection and Test - Weekly		Eric Sutton	11/29/23	Completed
11/27/23	18430	PS 9 Generator	PS #9 Generator Inspection and Test - Weekly		Eric Sutton	11/29/23	Completed
11/27/23	18435	PS 6 Generator	PS #6 Generator Inspection and Test - Weekly		Eric Sutton	11/29/23	Completed
11/27/23	18423	PS 5 Generator	PS #5 Generator Inspection and Test - Weekly		Eric Sutton	11/29/23	Completed

Date	Asset ID	Asset Description	Asset Class	Name
11/1/2023 10:02	01-021	5 ARTHUR ST	Hull Parcels	Sutton, Eric
11/27/2023 13:44	01-021	5 ARTHUR ST	Hull Parcels	Sutton, Eric
11/13/2023 13:43	05-086	3 JAMES AVE	Hull Parcels	Sutton, Eric
11/3/2023 10:28	06-042	11 DOUGLAS AVE	Hull Parcels	Sutton, Eric
11/21/2023 8:47	09-051	13 PT ALLERTON AVE	Hull Parcels	Sutton, Eric
11/15/2023 7:14		10880 8" VC Pipe	Hull Sewer Main	Sutton, Eric
11/3/2023 13:00	12-002	20 STANDISH AVE	Hull Parcels	Sutton, Eric
11/1/2023 15:01	12-079	19 V STREET	Hull Parcels	Sutton, Eric
11/7/2023 13:24	13-015	27 T STREET	Hull Parcels	Sutton, Eric
11/16/2023 14:16	13-105	37 Q STREET	Hull Parcels	Sutton, Eric
11/17/2023 11:19	13-105	37 Q STREET	Hull Parcels	Sutton, Eric
11/13/2023 14:07	13-145	49 P STREET	Hull Parcels	Sutton, Eric
11/21/2023 9:22	17-170-A	727 NANTASKET AVE	Hull Parcels	Sutton, Eric
11/7/2023 13:30	19-084	9 ADAMS STREET	Hull Parcels	Sutton, Eric
11/3/2023 12:51	19-092	195 SAMOSET AVE	Hull Parcels	Sutton, Eric
11/13/2023 13:41	19-099	644 NANTASKET AVE	Hull Parcels	Sutton, Eric
11/3/2023 8:31	20-136	25 MILFORD ST	Hull Parcels	Sutton, Eric
11/3/2023 12:49	21-104	141 SAMOSET AVE	Hull Parcels	Sutton, Eric
11/13/2023 13:39	22-147	8 COBURN ST	Hull Parcels	Sutton, Eric
11/20/2023 13:55	22-156	152 BROCKTON CIRCLE	Hull Parcels	Sutton, Eric
11/1/2023 10:10	24-078	81 WARFIELD AVE	Hull Parcels	Sutton, Eric
11/16/2023 14:19	25-119	52 A SAMOSET AVE	Hull Parcels	Sutton, Eric
11/7/2023 13:57	26-196	0 NANTASKET AVE	Hull Parcels	Sutton, Eric
11/27/2023 13:42	28-111	27 WESTMINSTER RD	Hull Parcels	Sutton, Eric
11/29/2023 9:31	30-012	111 EDGEWATER RD	Hull Parcels	Sutton, Eric
11/1/2023 14:57		30056 SEMS_Asset	Sanitary Manhole	Sutton, Eric
11/13/2023 13:30	35-158	7 OLD COLONY RD	Hull Parcels	Sutton, Eric
11/3/2023 12:53	36-017	47 BAY STREET	Hull Parcels	Sutton, Eric
11/1/2023 10:23	36-046	133 HAMPTON CIRCLE	Hull Parcels	Sutton, Eric
11/13/2023 13:29	36-075	8 OLD COLONY RD	Hull Parcels	Sutton, Eric
11/21/2023 13:03	38-011	13 BERKLEY RD	Hull Parcels	Sutton, Eric
11/13/2023 13:32	39-152	55 PARK AVE	Hull Parcels	Sutton, Eric
11/13/2023 14:13	47-064	110 NORTH TRURO ST	Hull Parcels	Sutton, Eric
11/17/2023 11:15	48-001	120 NANTASKET AVE	Hull Parcels	Sutton, Eric
11/17/2023 11:15	48-001	120 NANTASKET AVE	Hull Parcels	Sutton, Eric
11/3/2023 12:59	48-013-A	23 MIDLEDGE AVE	Hull Parcels	Sutton, Eric
11/29/2023 13:36	51-015	7 RICHARDS RD	Hull Parcels	Sutton, Eric
11/29/2023 13:59	51-015	7 RICHARDS RD	Hull Parcels	Sutton, Eric
11/20/2023 13:49	51-020-A	8 A RICHARDS RD	Hull Parcels	Sutton, Eric
11/1/2023 10:39	51-023	219 ATLANTIC AVE	Hull Parcels	Sutton, Eric
11/29/2023 10:15	51-078	8 MAPLE LANE	Hull Parcels	Sutton, Eric
11/22/2023 12:31	57-009	18 HARBOR VIEW RD	Hull Parcels	Sutton, Eric
11/7/2023 13:14	58-100	1169 NANTASKET AVE	Hull Parcels	Sutton, Eric

11/2/2023 11:20 Bateria UNIT #21	UNIT #21	Hull In Pipe Bacteria Unit	Sutton, Eric
11/14/2023 15:05 Bateria UNIT #21	UNIT #21	Hull In Pipe Bacteria Unit	Sutton, Eric
11/14/2023 15:10 Bateria UNIT #22	UNIT #22	Hull In Pipe Bacteria Unit	Sutton, Eric
11/14/2023 14:58 Bateria UNIT # 8	UNIT # 8	Hull In Pipe Bacteria Unit	Sutton, Eric
11/14/2023 14:54 Bateria UNIT #1	UNIT #1	Hull In Pipe Bacteria Unit	Sutton, Eric
11/14/2023 14:58 Bateria UNIT #10	UNIT #10	Hull In Pipe Bacteria Unit	Sutton, Eric
11/14/2023 15:02 Bateria UNIT #11	UNIT #11	Hull In Pipe Bacteria Unit	Sutton, Eric
11/14/2023 15:08 Bateria UNIT #12	UNIT #12	Hull In Pipe Bacteria Unit	Sutton, Eric
11/14/2023 15:07 Bateria UNIT #13	UNIT #13	Hull In Pipe Bacteria Unit	Sutton, Eric
11/14/2023 15:07 Bateria UNIT #14	UNIT #14	Hull In Pipe Bacteria Unit	Sutton, Eric
11/14/2023 15:06 Bateria UNIT #15	UNIT #15	Hull In Pipe Bacteria Unit	Sutton, Eric
11/14/2023 15:04 Bateria UNIT #16	UNIT #16	Hull In Pipe Bacteria Unit	Sutton, Eric
11/14/2023 14:59 Bateria UNIT #17	UNIT #17	Hull In Pipe Bacteria Unit	Sutton, Eric
11/14/2023 15:01 Bateria UNIT #18	UNIT #18	Hull In Pipe Bacteria Unit	Sutton, Eric
11/14/2023 15:01 Bateria UNIT #19	UNIT #19	Hull In Pipe Bacteria Unit	Sutton, Eric
11/14/2023 14:55 Bateria UNIT #2	UNIT #2	Hull In Pipe Bacteria Unit	Sutton, Eric
11/14/2023 15:05 Bateria UNIT #20	UNIT #20	Hull In Pipe Bacteria Unit	Sutton, Eric
11/14/2023 15:09 Bateria UNIT #23	UNIT #23	Hull In Pipe Bacteria Unit	Sutton, Eric
11/14/2023 14:54 Bateria UNIT #24	UNIT #24	Hull In Pipe Bacteria Unit	Sutton, Eric
11/2/2023 11:17 Bateria UNIT #3	UNIT #3	Hull In Pipe Bacteria Unit	Sutton, Eric
11/14/2023 15:00 Bateria UNIT #3	UNIT #3	Hull In Pipe Bacteria Unit	Sutton, Eric
11/2/2023 11:14 Bateria UNIT #4	UNIT #4	Hull In Pipe Bacteria Unit	Sutton, Eric
11/14/2023 14:42 Bateria UNIT #4	UNIT #4	Hull In Pipe Bacteria Unit	Sutton, Eric
11/14/2023 14:56 Bateria UNIT #5	UNIT #5	Hull In Pipe Bacteria Unit	Sutton, Eric
11/14/2023 14:55 Bateria UNIT #6	UNIT #6	Hull In Pipe Bacteria Unit	Sutton, Eric
11/14/2023 14:57 Bateria UNIT #7	UNIT #7	Hull In Pipe Bacteria Unit	Sutton, Eric
11/14/2023 15:09 Bateria UNIT #9	UNIT #9	Hull In Pipe Bacteria Unit	Sutton, Eric
11/1/2023 14:50 HULL_MH-20911A	SEMS_Asset	Sanitary Manhole	Sutton, Eric
11/3/2023 13:14 MH-20065	SEMS_Asset	Sanitary Manhole	Sutton, Eric
11/29/2023 9:25 MH-20197	SEMS_Asset	Sanitary Manhole	Sutton, Eric
11/3/2023 13:04 MH-20205	SEMS_Asset	Sanitary Manhole	Sutton, Eric
11/9/2023 8:39 MH-20290	SEMS_Asset	Sanitary Manhole	Sutton, Eric
11/1/2023 14:04 MH-20423	SEMS_Asset	Sanitary Manhole	Sutton, Eric
11/9/2023 8:33 MH-20496	SEMS_Asset	Sanitary Manhole	Sutton, Eric
11/9/2023 8:36 MH-20580	SEMS_Asset	Sanitary Manhole	Sutton, Eric
11/20/2023 13:53 MH-20728	SEMS_Asset	Sanitary Manhole	Sutton, Eric
11/9/2023 8:30 MH-20741	SEMS_Asset	Sanitary Manhole	Sutton, Eric
11/1/2023 14:18 MH-20794	SEMS_Asset	Sanitary Manhole	Sutton, Eric
11/1/2023 14:23 MH-20809	SEMS_Asset	Sanitary Manhole	Sutton, Eric
11/1/2023 14:28 MH-20809	SEMS_Asset	Sanitary Manhole	Sutton, Eric
11/29/2023 13:54 MH-20811	SEMS_Asset	Sanitary Manhole	Sutton, Eric
11/1/2023 14:11 MH-20813	SEMS_Asset	Sanitary Manhole	Sutton, Eric
11/17/2023 11:10 MH-20827	SEMS_Asset	Sanitary Manhole	Sutton, Eric
11/9/2023 8:27 MH-20842	SEMS_Asset	Sanitary Manhole	Sutton, Eric

11/1/2023 14:40 MH-20907	SEMS_Asset	Sanitary Manhole	Sutton, Eric
11/1/2023 14:43 MH-20910	SEMS_Asset	Sanitary Manhole	Sutton, Eric
11/1/2023 14:45 MH-20911	SEMS_Asset	Sanitary Manhole	Sutton, Eric
11/1/2023 14:51 MH-20914	SEMS_Asset	Sanitary Manhole	Sutton, Eric
11/1/2023 14:54 MH-20919	SEMS_Asset	Sanitary Manhole	Sutton, Eric
11/1/2023 14:35 MH-21013	SEMS_Asset	Sanitary Manhole	Sutton, Eric

[illegible]

Hull - In Pipe Bacteria Units	<a href="#">View</a>
Hull - In Pipe Bacteria Units	<a href="#">View</a>
Hull - In Pipe Bacteria Units	<a href="#">View</a>
Hull - In Pipe Bacteria Units	<a href="#">View</a>
Hull - In Pipe Bacteria Units	<a href="#">View</a>
Hull - In Pipe Bacteria Units	<a href="#">View</a>
Hull - In Pipe Bacteria Units	<a href="#">View</a>
Hull - In Pipe Bacteria Units	<a href="#">View</a>
Hull - In Pipe Bacteria Units	<a href="#">View</a>
Hull - In Pipe Bacteria Units	<a href="#">View</a>
Hull - In Pipe Bacteria Units	<a href="#">View</a>
Hull - In Pipe Bacteria Units	<a href="#">View</a>
Hull - In Pipe Bacteria Units	<a href="#">View</a>
Hull - In Pipe Bacteria Units	<a href="#">View</a>
Hull - In Pipe Bacteria Units	<a href="#">View</a>
Hull - In Pipe Bacteria Units	<a href="#">View</a>
Hull - In Pipe Bacteria Units	<a href="#">View</a>
Hull - In Pipe Bacteria Units	<a href="#">View</a>
Hull - In Pipe Bacteria Units	<a href="#">View</a>
Hull - In Pipe Bacteria Units	<a href="#">View</a>
Hull - In Pipe Bacteria Units	<a href="#">View</a>
Hull - In Pipe Bacteria Units	<a href="#">View</a>
Hull - In Pipe Bacteria Units	<a href="#">View</a>
Hull - In Pipe Bacteria Units	<a href="#">View</a>
Hull - In Pipe Bacteria Units	<a href="#">View</a>
Hull - In Pipe Bacteria Units	<a href="#">View</a>
Hull - In Pipe Bacteria Units	<a href="#">View</a>
Hull - In Pipe Bacteria Units	<a href="#">View</a>
Hull - In Pipe Bacteria Units	<a href="#">View</a>
Hull - In Pipe Bacteria Units	<a href="#">View</a>
MH Frame & Cover Inspection	<a href="#">View</a>
MH Frame & Cover Inspection	<a href="#">View</a>
MH Frame & Cover Inspection	<a href="#">View</a>
Sewer Main Cleaning & CCTV	<a href="#">View</a>
Generic WO	<a href="#">View</a>
MH Frame & Cover Inspection	<a href="#">View</a>
Generic WO	<a href="#">View</a>
Generic WO	<a href="#">View</a>
Hull - Markout	<a href="#">View</a>
Generic WO	<a href="#">View</a>
MH Frame & Cover Inspection	<a href="#">View</a>
MH Frame & Cover Inspection	<a href="#">View</a>
MH Frame & Cover Inspection	<a href="#">View</a>
Generic WO	<a href="#">View</a>
MH Frame & Cover Inspection	<a href="#">View</a>
MH Frame & Cover Inspection	<a href="#">View</a>
Generic WO	<a href="#">View</a>

[View](#)

[View](#)[View](#)

[View](#)

[View](#)

View



Hull 2022-2023 - 09M Projects, Tasks, and Needs - (MS)								
Maintenance Account - Year 9 - 05_01_23 to 04_30_24								
FOR 2023 M.O.R.					\$241,038.61			<a href="#">1/24/2024 14:36</a>
Priority [1=high]	Description	Status	completed	Task	Estimates & funds remaining	Final Completed Cost	Lead	Comments
1	Mechanical Work Labor by O&M specialists	Pending		101A				Placeholder for Jody St. George, Paul Horigan & WC Support Staff - Total budget \$25,000;
1	Pump and Motor Repairs/Replacements [invoiced and pcard]	Pending		101A	\$8,000.00			to keep existing equipment running - utilize various outside contractor repair shops, new purchases. orig budget \$20,000;
1	Lubricants	Pending		101A	\$1,000.00			Various Suppliers for oil and grease. Budgeted \$1000.
1	Generator Prev. Maintenance and Repairs	Pending		101A	\$21,698.61			Orig budget \$25,000. General PM and CM Repair Work - <b>Placeholder</b>
1	Fire Alarm Inspections and Service	Pending		101A	\$2,700.00			Original Budget \$4,000 - Semi Annual - Flight Alarm Co.Inspections, central station, and service calls
2	Universal waste disposal	Pending		101A	\$500.00			Placeholder - \$500
1	Service the Forklift	Pending		101A	\$400.00			Placeholder \$400 - Annual cost - outside vendor.
1	Overhead Hoist Inspection & repairs	Pending		101A	\$1,700.00			Annual task - Applied Dynamics - Inspection Work - due in spring/summer 2023
1	Flow meter verification and calibration	Pending		101A	\$1,200.00			Placeholder \$1,200 - Annual - Ray Ferland or other 1 visit annually -
1	Facility Building - Roof Inspection	Pending		101A	\$2,800.00			\$2800 Annual Placeholder - Established contract with Tecta America. Need for new proposal.
2	Jerome H2S Meter Inspection	Pending		102B	\$11,000.00			Placeholder if new meter is to be planned for. Factors for new meter replacement to be considered.
1	Janitorial Supplies	Pending		101A	\$3,000.00			Orig budget \$3,000 - Estimated annual expenditures
1	Manhole Inspections	Pending		101A				As required,and/or scheduled
2	General mechanical and electrical items/supplies	Pending		101A	\$20,000.00			Grainger, FWWebb, EJP,Hoadley, McMasterCarr, etc; orig budget \$20,000,
1	Thompson Pump repairs	Pending		101A				
2	Large Hoses & fittings	Pending		101A	\$3,000.00			Orig budget \$3,000. Replacements and/or Service - On-Going - As Needed.
1		Pending		102B				
3		Pending		101A				
		Pending		101A				

Hull 2022-2023 - 09M Projects, Tasks, and Needs - (MS)								
Maintenance Account - Year 9 - 05_01_23 to 04_30_24								
FOR 2023 M.O.R.					\$241,038.61			<a href="#">1/24/2024 14:36</a>
Priority [1=high]	Description	Status	completed	Task	Estimates & funds remaining	Final Completed Cost	Lead	Comments
1	Lab Equip Calibration	Pending		101A	\$640.00			Annual service \$640
1		Pending		101A				
	Duperon Service Call	Pending		102B				recommended services per last visit, need repair report[s]
2		Pending		101A				
1		Pending		102B				
2	New Magnetic flow meters for RAS and WAS	Pending		102B	\$9,000.00			hardware - does not include installation [estimate for Equip - \$9,000] May or may not occur. Remove from planned projects for 09M.
2		Pending		102B				
1		Pending		102B				
1		Pending		102B				
1		Pending		102B				
3	Sanitaire hardware purchase for aer tk 1	Pending		102B				Purchase more hardware ??
1		Pending		102B				
2		Pending		102B				
2	Pump Station #3 - spare rotating, assy, or pump	Pending		102B				TBD- estimates being obtained
3	New 4-inch valves or 6-inch valves for pri building between the tanks & Installation	Pending		102B				Valves - cost: \$3000, sub-contracted labor - either WC or outside co.\$5,000 - <b>totl estim \$8,000</b>
3	Odor log data loggers & calibr kit	Pending		102B				if funds avail
3		Pending		102B				
3	Gravity Thickener #1 sandblasting/painting	Pending		102B				Estimate \$50,000+ - would need to go out for competitive bid request

Hull 2022-2023 - 09M Projects, Tasks, and Needs - (MS)								
Maintenance Account - Year 9 - 05_01_23 to 04_30_24								
FOR 2023 M.O.R.					\$241,038.61			<a href="#">1/24/2024 14:36</a>
Priority [1=high]	Description	Status	completed	Task	Estimates & funds remaining	Final Completed Cost	Lead	Comments
2		Pending		102B				
1	Grit classifier system parts	Pending		102B	\$4,500.00			Plan for additional tail shaft assy and housing & bushings. Pricing out items/costs by various vendors incl Mfr. 3/16 update - recommendations provided for spare parts
	Plant Water System [Pump and/or parts]	Pending		102B	\$6,000.00			consider spare motor or complete unit. Under review/hold [est \$6,000].
1		Pending		102B				
1	Electrical Work	Pending		103A	\$20,000.00			Orig budget \$35,000. Electricians: Glen Fellows, HiVoltage, or other;
1	SCADA Work - service calls, etc	Pending		103A	\$6,000.00			Steve Rose and the SCADA Support Team; budget \$6,000;
1	E-One Repairs and Replacement	Pending		103A	\$34,000.00			Orig budget: \$65,000. Based on historica/recent costs.
1	Automatic Transfer Switch inspection and servicing	Pending		101A	\$2,400.00			\$2400 - Annual Service planned for NETS - Transfer Switch
1	Wetwell Inspections and Cleaning - Plant/Pump Stations	Pending		103A	\$8,000.00			As required, plant or pump stations; orig budget \$8,000;
1	Sewer Line Cleaning - Emergencies, pump & haul	Pending		103A	\$10,000.00			Placeholder - As required for various sub-contractors; could be Hoadley, Truax, WindRiver, BMC, or other, collection system & plant; budget \$10,000
1	Collection System and plant - emerg & unplanned calls - Jetting & CCTV work - various contractors	Pending		103A	\$10,000.00			Budget - 15,000, Plan to be developed
1		Pending		102B				
3		Pending		103A				
3	SHT1 - demo of equip, air piping & diffuser install/materials	Pending		103A				demo concrete in tank - \$15,000 - sub-contractor and installation of new equip -additional new equip \$6,000; air piping to the tank \$10,000; Total estimate: \$31k to 35K ??. For consideration with outside contractor
4	Generators - Load Bank Testing Plant & Pump Stations	Pending		103A				Look at 09M -last done under 06M. SSGen - review cost estimates.
1	Generators and portable pumps - Annual repairs	Pending		103A	\$10,000.00			SSGen - \$20,000
1	MCC work at the Pump Stations & IR scan for plant and pump s	Pending		103A				Review recent propsal and develop plan
3	Low pressure sewer valve box insp & mtce	Pending		103A				placeholder for contractor O&M inspections and potential repairs; Looking at Rosano-Davis or another contractor & W&C to investigate;come up with plan to rempve covers and inspect
1	Grit screw installation	Pending		102B	\$40,000.00			\$40,000 placeholder installation.

Hull 2022-2023 - 09M Projects, Tasks, and Needs - (MS)								
Maintenance Account - Year 9 - 05_01_23 to 04_30_24								
FOR 2023 M.O.R.					\$241,038.61			1/24/2024 14:36
Priority [1=high]	Description	Status	completed	Task	Estimates & funds remaining	Final Completed Cost	Lead	Comments
1		Pending		102B				
1		Pending		101A				
	HDWK fiberglass slide gate	Pending		101A	\$3,500.00			Soliciting estimates for at least one new slide gate. Placeholder [Jan 2023] \$3,000; Adjust estimate up to \$3,500 for one gate. No orders placed yet. 3/16 [AV]
1	SC #1 Structural Steel Repairs	Pending		103A				Based on T&M - center supports, scrapers, other - IPC Lydon. Orig \$20K
TOTAL					\$241,038.61			

Asset Management Accounts - Year 9							
		Actual to date			Projected for Final Estimate		
Account		Budgeted Amount	Spent to Date	Delta	Projected costs and incl PO's	Final est	Delta
09M-101A	Preventive Maint	\$242,712.26	\$102,011.09	\$140,701.17	\$72,538.61	\$174,549.70	\$68,162.56
09M-102B	Capital and Major Repairs	\$140,000.00	\$34,427.02	\$105,572.98	\$70,500.00	\$104,927.02	\$35,072.98
09M-103A	Major Sub Contractors	\$206,459.14	\$110,970.87	\$95,488.27	\$98,000.00	\$208,970.87	(\$2,511.73)
blank							
	Asset Management	\$589,171.40	\$247,408.98	\$341,762.42	\$241,038.61	\$488,447.59	\$100,723.81

\$341,762.42

Budget expended	Time Status	
	NOW=	1/24/2024
	Start	5/1/2020
42.0%	373.6%	331.6%
24.6%	373.6%	349.0%
53.7%	373.6%	319.8%
42.0%	373.6%	331.6%

09S	D Street	\$7,500.00	\$4,222.43	\$3,277.57	\$0.00	\$4,222.43	\$3,277.57
-----	----------	------------	------------	------------	--------	------------	------------

56.3%	373.6%	317.3%
-------	--------	--------

09C	Odor Control Chemicals	\$100,000.00	\$149,384.00	(\$49,384.00)	\$0.00	\$149,384.00	(\$49,384.00)
-----	------------------------	--------------	--------------	---------------	--------	--------------	---------------

149.4%	373.6%	224.2%
--------	--------	--------

\$292,378.42

Estimated total remaining 09M, 09C	\$51,339.81
------------------------------------	-------------