



HULL WATER POLLUTION CONTROL FACILITY

June
2022

MONTHLY OPERATING REPORT



woodardcurran.com

COMMITMENT & INTEGRITY DRIVE RESULTS

NPDES NO. MA0101231

Table of Contents

1	Executive Summary	3
2	Flows and Loadings.....	4
a.	Average effluent monthly flows – 2+ year comparison	5
b.	Two Month Summary of Rainfall and the Influence on Effluent Flows	6
3	Compliance	7
4	Key Performance Indicators	11
a.	Water Quality – JUNE 2022	11
5	Odor Control	14
6	Maintenance Summary	17
a.	Tasks Completed this Month	18
b.	Asset Management Accounts	18
6	Safety.....	19
7	Staff Development.....	20
8	Collection System	21
a.	Wet Well Cleaning	21
b.	Collection System Maintenance	21
9	Project Management & Administration.....	23
a.	On-Going Projects and Support Items	23

Cover pictures:

top: Thompson Trash Pump – pump end repairs - waiting for parts
bottom: [Hoadley vactor truck](#) cleaning out the Gravity Thickener #2.

1 EXECUTIVE SUMMARY

This Monthly Operating Report provides a summary of the pertinent information and activities that occurred at Hull WPCF during the month of June 2022.

- No lost-time incidents for the month of June
- Continuing Covid-19 awareness- adhering to W&C, Town of Hull, and CDC guidelines and sharing any updates.
- There were 128 effluent samples taken in the month of June- details on page (12). All effluent samples collected were compliant, while process conditions were stable.
- There were no Sanitary System Overflows [SSO] reported.
- The plant and collection system odors remained low, sewage temperatures rising and more Bioxide feed needed. Ongoing remote monitoring with the Vapor-Link for H₂S levels.
- The Asset Management Accounts summaries for contract year #8 is attached. Latest revision date: 7/27/22.
- There were 5 E-One grinder pump calls in June
- W&C's O&M continued its efforts to support the various ongoing engineering projects. See projects section.
- The weekly Bio Bot Covid-19 wastewater sampling & monitoring program continues, with W&C staff assisting Brian Kiley of HSD when needed.

***Mike Sullivan – Plant Manager
Town of Hull WPCF
7/31/22***

Woodard & Curran strives to deliver a high-quality operations service and is responsive to our customers concerns. Please feel free to request any modifications to the format or content of this report.

2 FLOWS AND LOADINGS



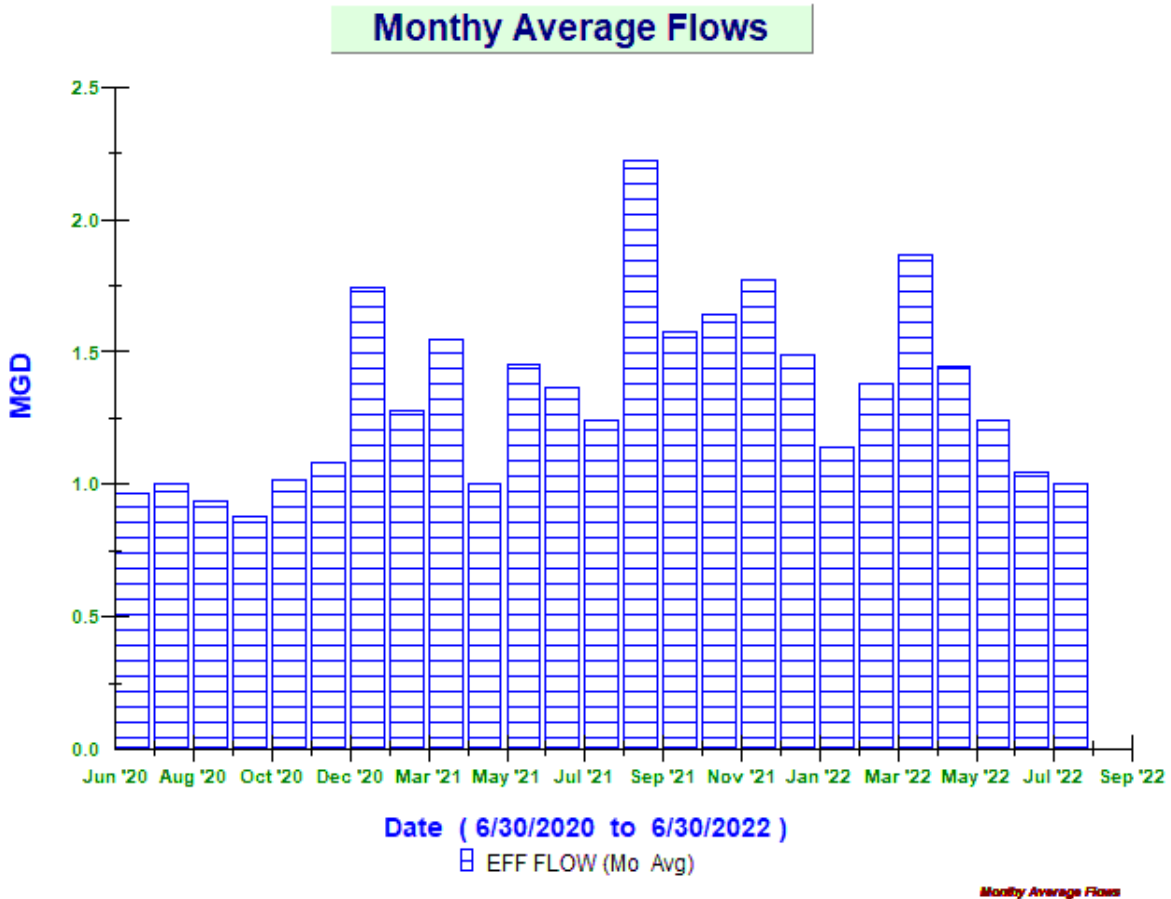
Average Daily Flows and Loadings for the Month: June

Month / Year	Eff Flow	Inf Flow	Inf BOD	Inf TSS	Eff BOD	EFF TSS
	MGD	MDG	LBS	LBS	LBS	LBS
Jun '20	0.97	1.17	1,813.95	3,269.98	40.39	117.99
Jun '21	1.24	1.27	1,646.65	3,029.91	45.65	90.70
Jun '22	1.00	1.04	1,438.86	1,775.11	50.14	92.47

* On-Going -the existing influent flow meters are strap-on doppler flow meters, and the existing pipe condition prevents getting a strong signal. An area velocity meter in the aeration tank inlet channel is used as well as the headworks influent Parshall Flume meter to monitor influent flows. All reported loadings are based on the effluent flow meter [new mag meter April 2021]. All meters are tied into the Scada system so that influent flows can be monitored.

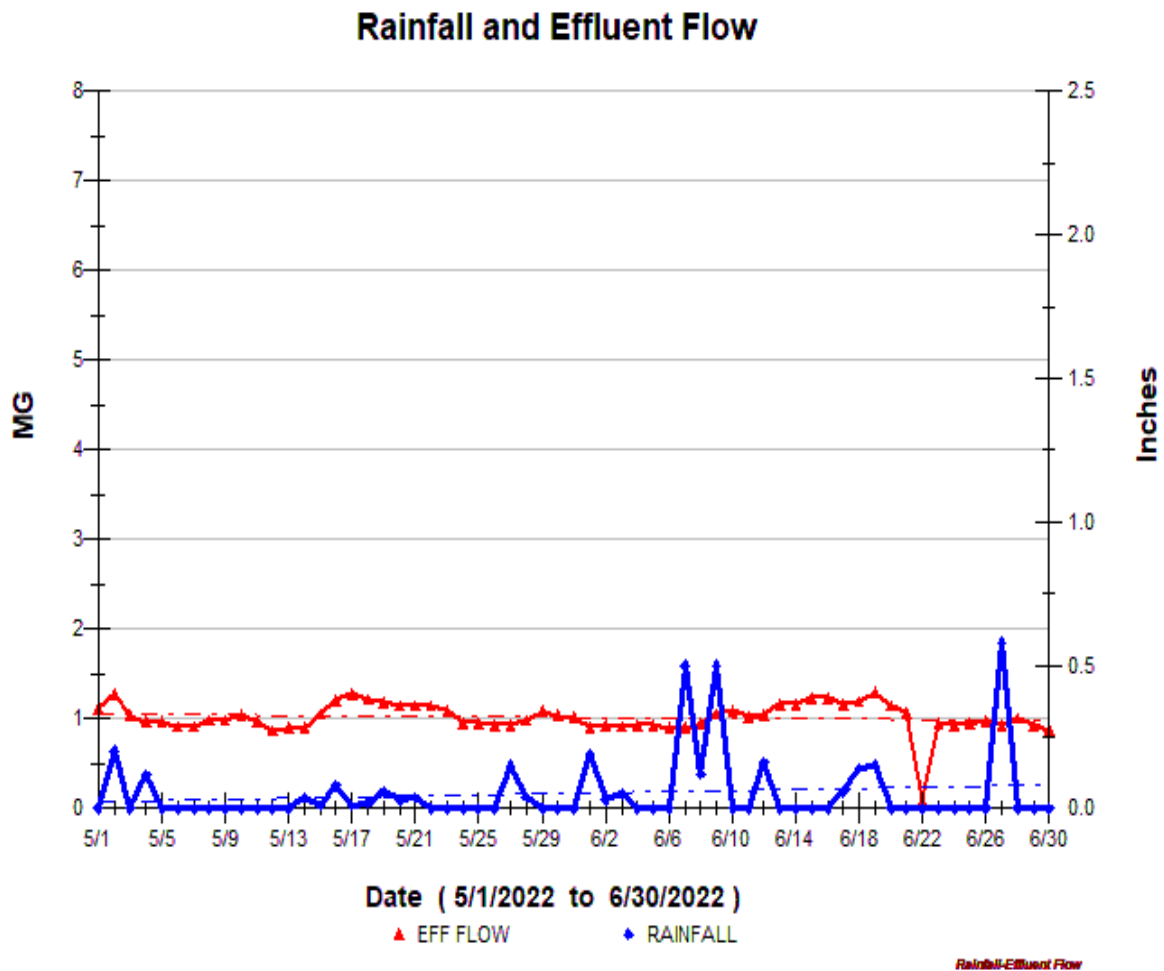
A. AVERAGE EFFLUENT MONTHLY FLOWS – 2+ YEAR COMPARISON

Monthly average flow for June 1.00 MGD, slightly lower than May's 1.04. Total precipitation for June was 2.48 inches. Higher than May's 0.80 inches, but no impact on plant flow, due to the very dry conditions. The graph shows the 2-plus year summary of the monthly average flows.



B. TWO MONTH SUMMARY OF RAINFALL AND THE INFLUENCE ON EFFLUENT FLOWS

This graph shows the days where precipitation occurred [rainfall] [Blue Peaks].



3 COMPLIANCE



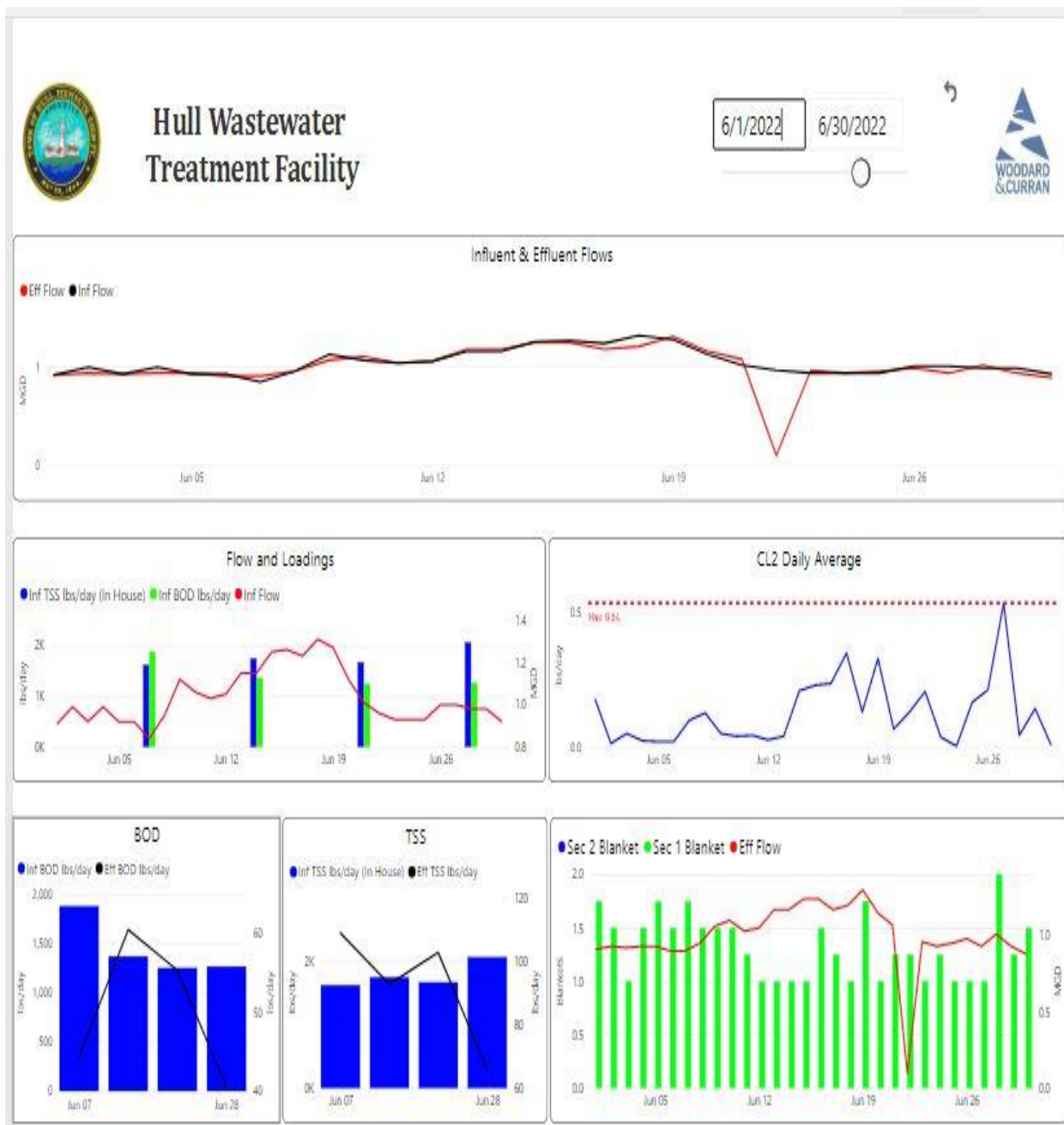
➤ Plant Effluent

There were no permit exceedances in June.

- Plant process conditions were stable during the month and the process tank configuration remained unchanged.

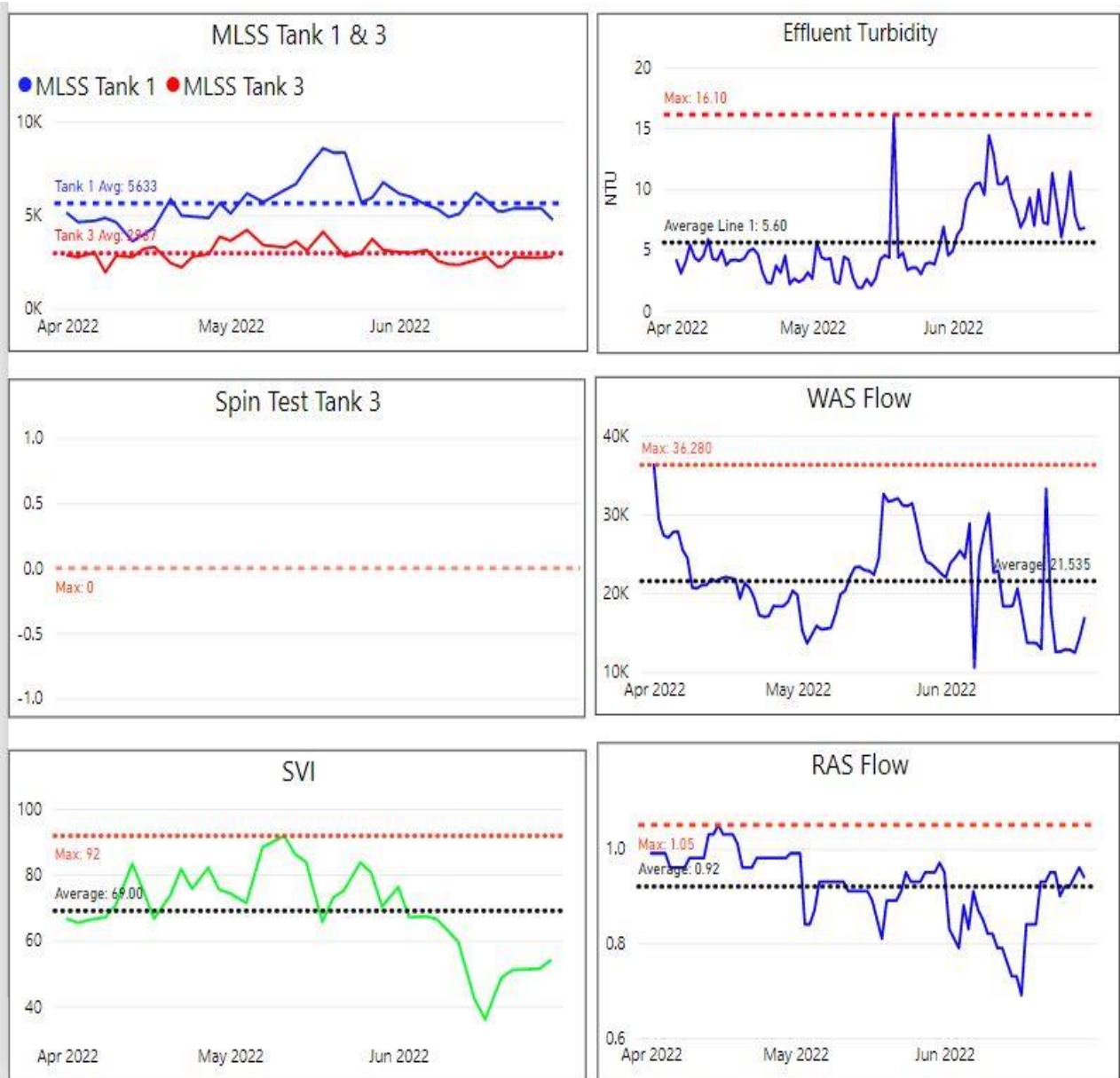


- A Copy of the monthly NPDES reports for June 2022 and the May Quarterly WET report were submitted to the EPA, DEP, and the Hull Sewer Dept.



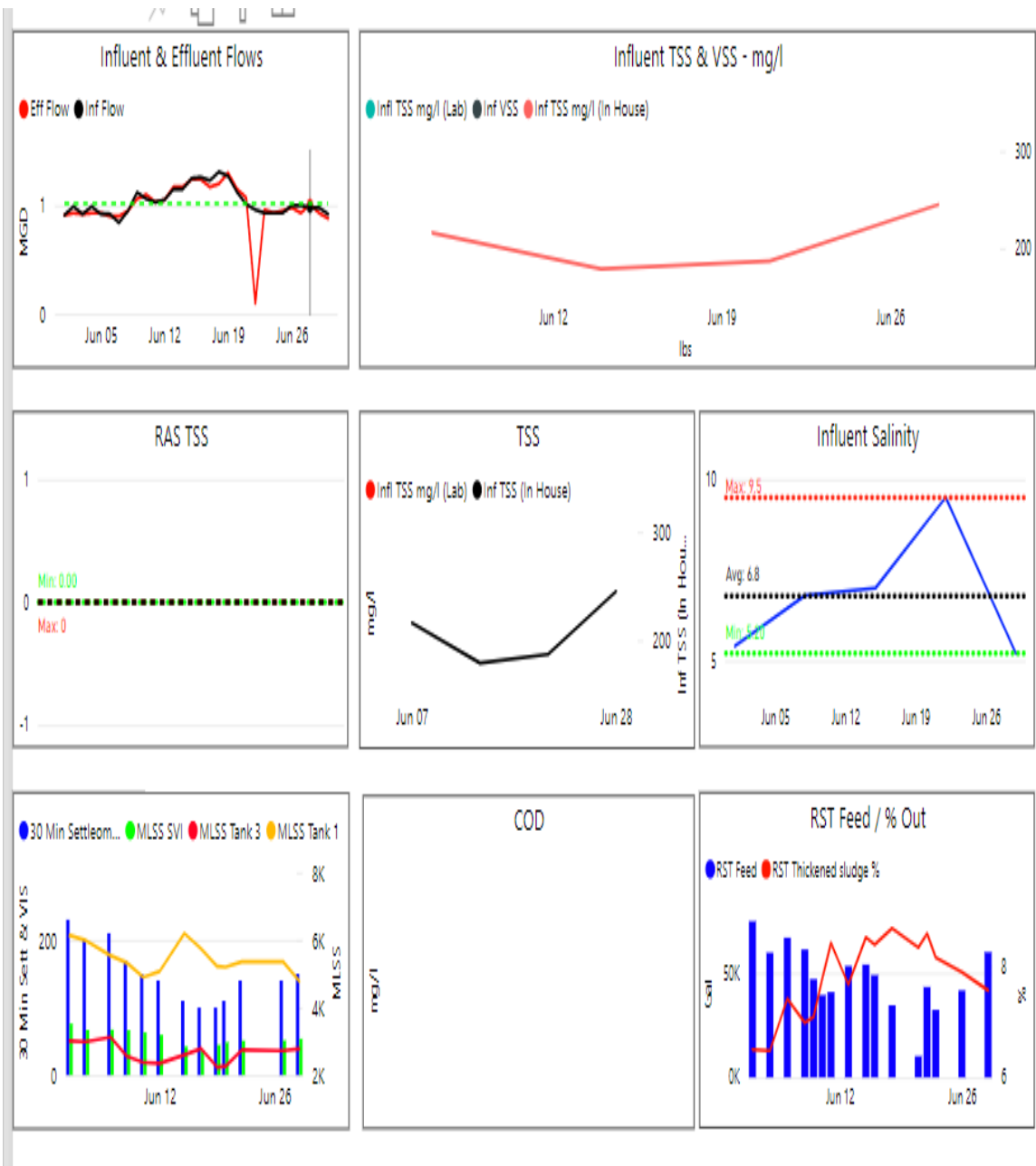
Monthly Process Summary graphs from power BI – June 2022.

SECONDARY PROCESSES – POWER BI GRAPHS



3-month period ending on 6/30/22. The tank solids levels under aeration were stable, as there were no significant changes in plant flows during the month.

Additional Power BI Graphs showing trends of various processes – June 2022.



4 KEY PERFORMANCE INDICATORS

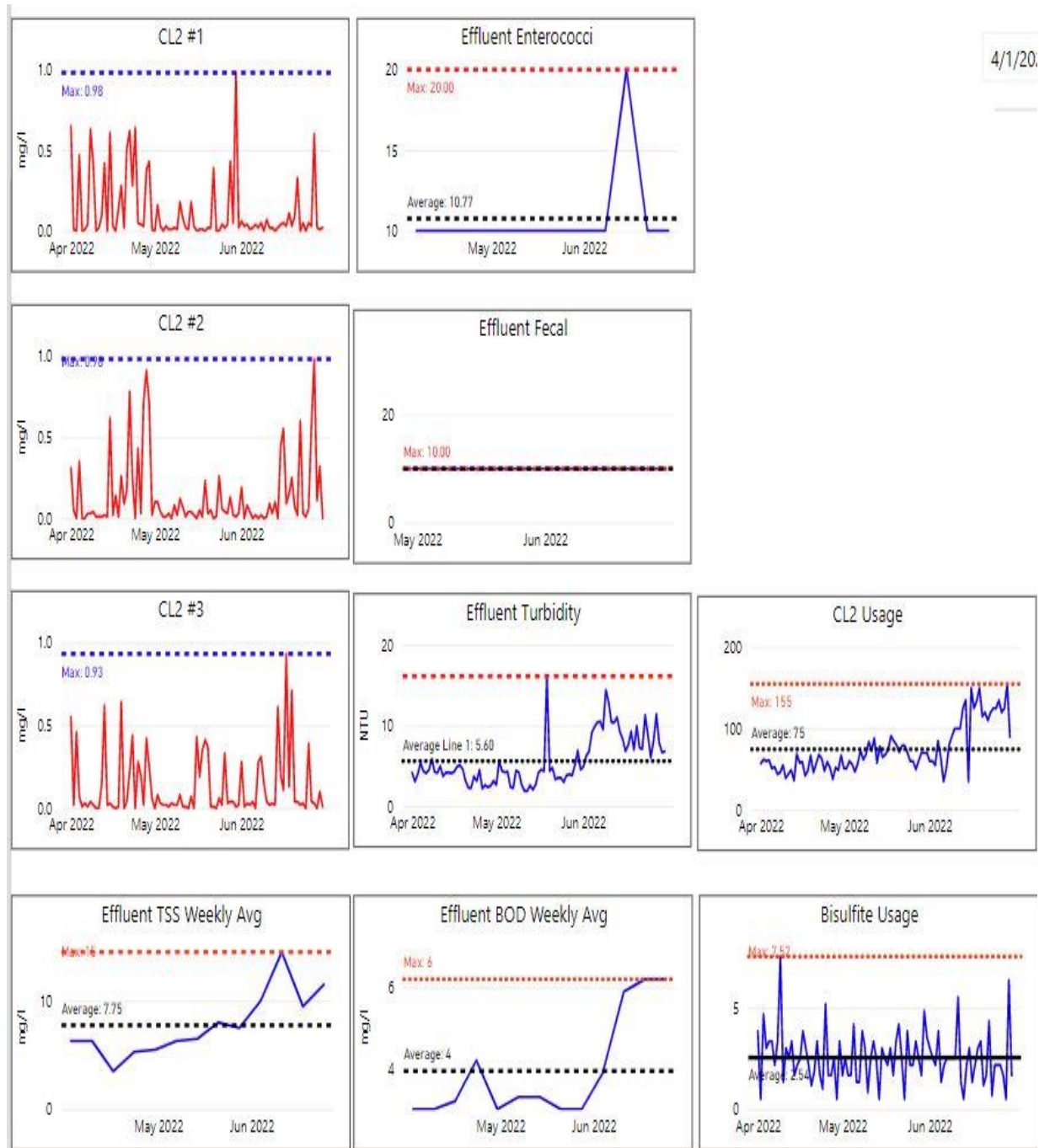


A. WATER QUALITY – JUNE 2022

parameter Info		Permit Requirements					Results				
Parameter	Unit s	Daily Allowed Max in month	Min %	Weekly Avg. Max Allowed in month	Monthly Avg	Freq	Period Monthly Avg.	Period Weekly Min	Period Daily Max	# Of Samples	# Of Violations
Eff TSS	MG/L	50		45	30	1 X Week	10.8	7.8	14.5	4	0
Eff TSS	LBS			1152	768	1 X Week	92.5	58.2	108.8		0
% TSS Rem	%		85			1 X Month	94.8				0
Eff BOD	MG/L	50		45	30	1 X Week	5.8	4.8	6.2	4	0
Eff BOD	LBS			1152	768	1 X Week	50.1	40.4	60.5		0
% BOD Rem	%		85			1 X Month	96.6				0
Eff Chlorine	MG/L	1.0			0.7	3 X Day	0.13	0.00	0.54	93	0
Eff Fecal	#/100 ML	260			88	1 X Week	10	10	10	5	0
Eff pH	SU	8.5	6.5			1X Daily	6.7	6.5	7.4	31	0
Enterococci	CFU/100 ML	276			35	1 X Week	11	10	20	5	0

There were 146 effluent samples taken in June 2022

EFFLUENT COMPLIANCE POWER BI GRAPHS

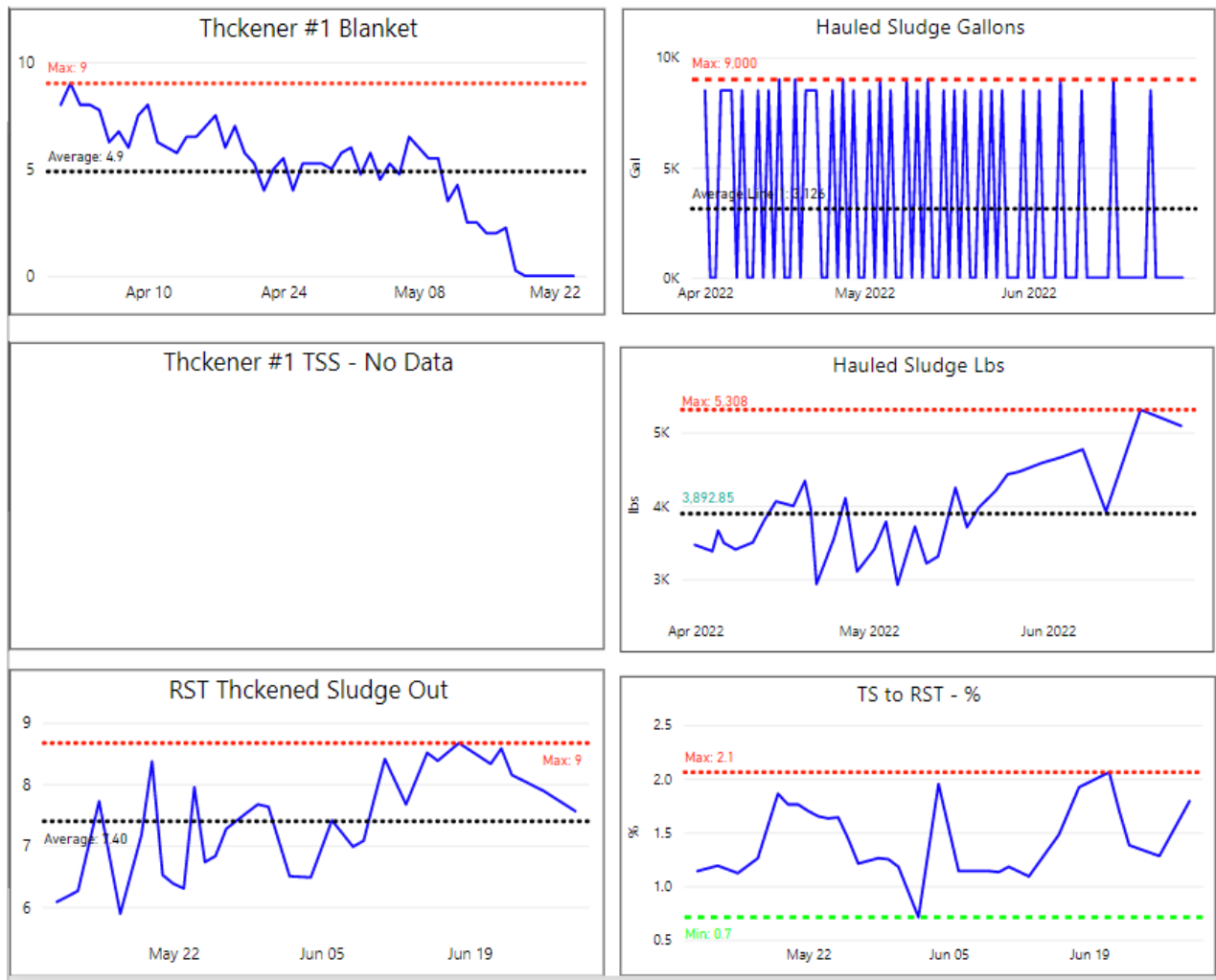


Last 3-month period ending on 6/30/22 - chlorine residuals, effluent compliance, & chemical use. Bleach [sodium hypochlorite] & sodium bisulfite use on the rise. Turbidity [clarity] of the effluent was satisfactory but higher. Effluent quality was good.

Sewage Gallons Treated vs Sludge Disposed

Month	Effluent Treated, MG	Sludge Disposed, Gals
June 2020	28.99	97,000
June 2021	37.28	79,500
June 2022	29.98	43,500

Additional Power BI graphs for sludge solids for 3-month period ending 6/30/22. The gravity thickener is now offline.

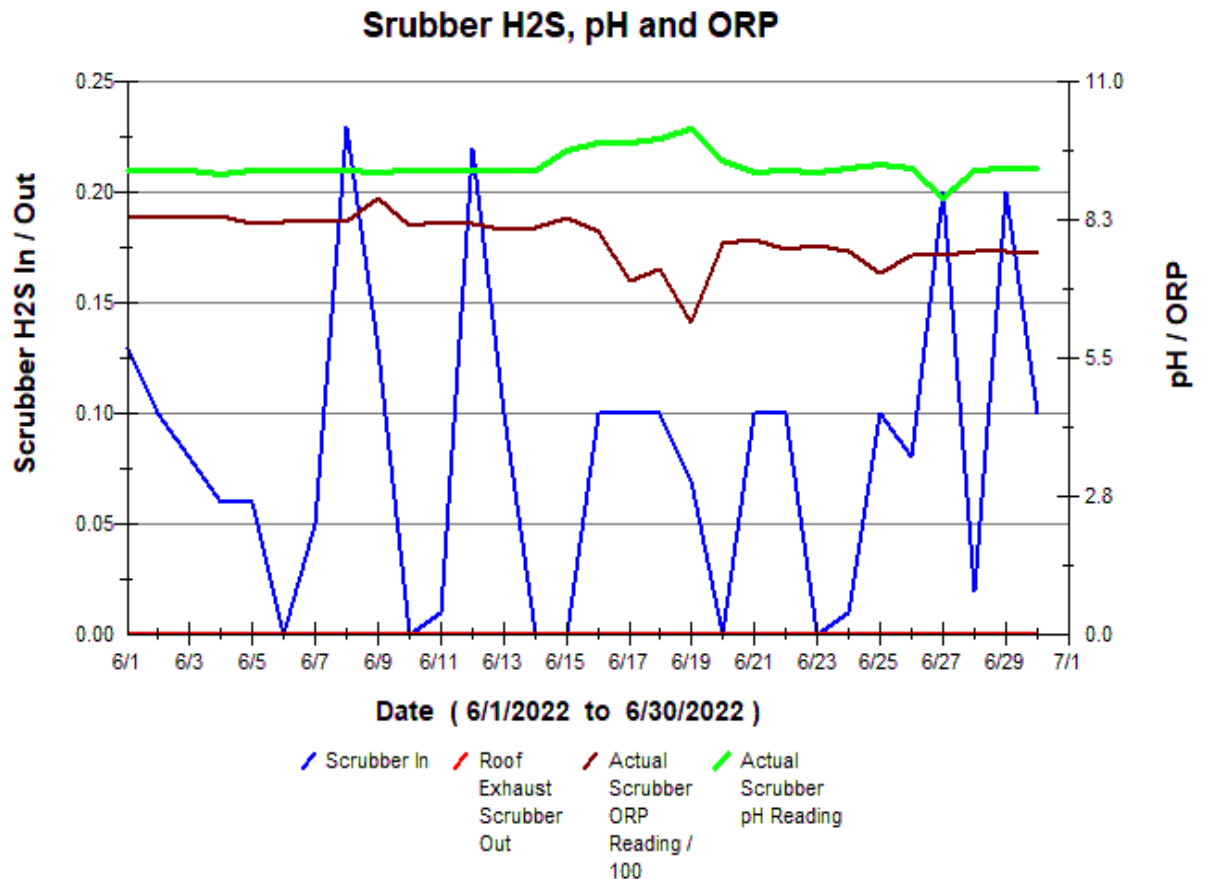


5 ODOR CONTROL

There were no odor complaint calls received during June for the wastewater plant.

The Bioxide system was on, and the feed rates were raised up to meet the higher hydrogen sulfide generation in the system. The changes and adjustments made, as needed according to data seen at Nantasket/Water MH and XYZ/Nantasket MH. Warming temperatures and low flows were having an impact on H₂S formation in the collection system. The monthly graphs are attached below. The daily average Bioxide use for June was 60 gallons per day.

- “In-Pipe” bacteria – the 24 monthly unit changeouts were completed on 6/16 and the bi-monthly unit changeouts on 6/10.
- No changes: on pump station mixing systems/aerators.
- Slight changes - Hydrogen sulfide (H₂S) monitoring units were recording and trending on the odor scrubber. [inlet and outlet]. Increased scrubber fan speed slightly. See graph below



Scrubber H₂S, pH and ORP

[pictured below: Scrubber trend and trending graphs for H2S levels recorded from the vapor link system cellular at XYZ Street/Nantasket Ave and Nantasket Ave/Water Street manholes. The Evoqua technician resolved the communication issue.

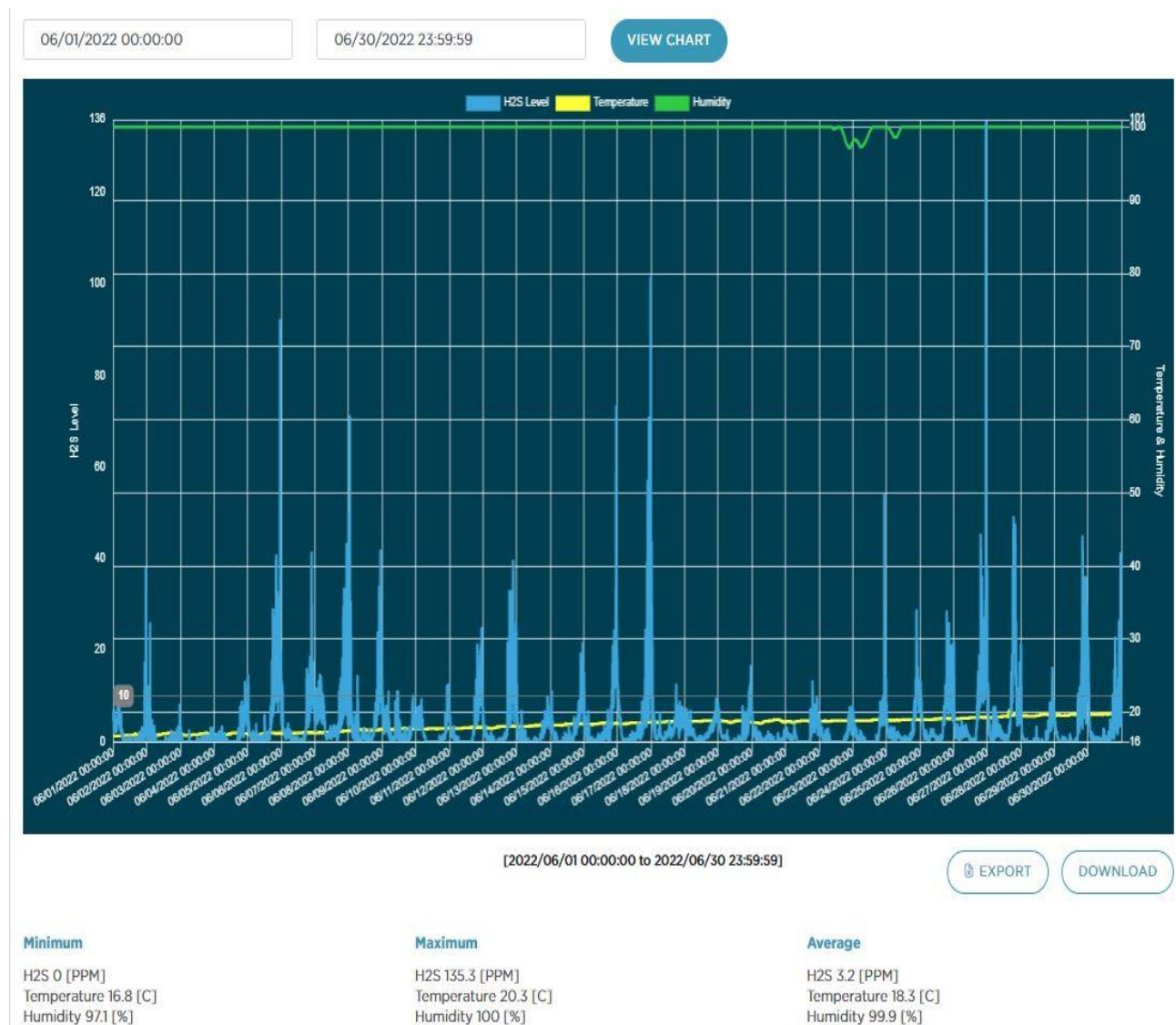
XYZ – Nantasket Ave [closest to plant]



The odor data logging unit at XYZ monitoring the overall H2S levels close to the plant. Low/ZERO H2S present.

Nantasket Ave/Water Street [at end of PS 3 force main and PS 4 discharge]

Pump station #3 - H2S is monitored at the end of the force main at the MH at Nantasket Ave & Water Street. Bioxide is added to allow excess nitrate in the sewage system to treat the additional H2S added from other parts the system – such as PS #4, contributions from lines feeding the interceptor - PS #5, PS #6, PS #9, Spinnaker Island, etc., all the way to the wastewater plant. H2S levels higher. Adjustments for more Bioxide feed made during peak periods where H2S levels were high.



of

6 MAINTENANCE SUMMARY

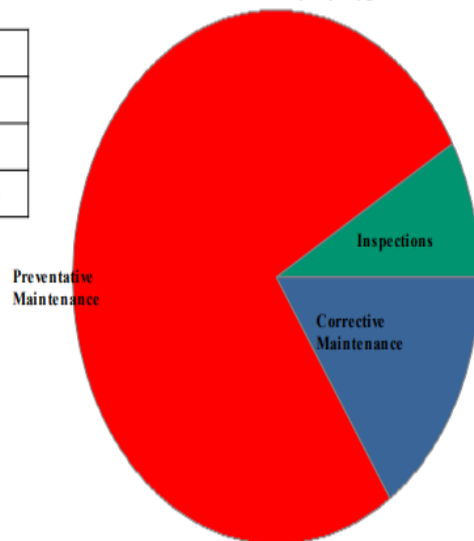


Maintenance History Report Hull Wastewater

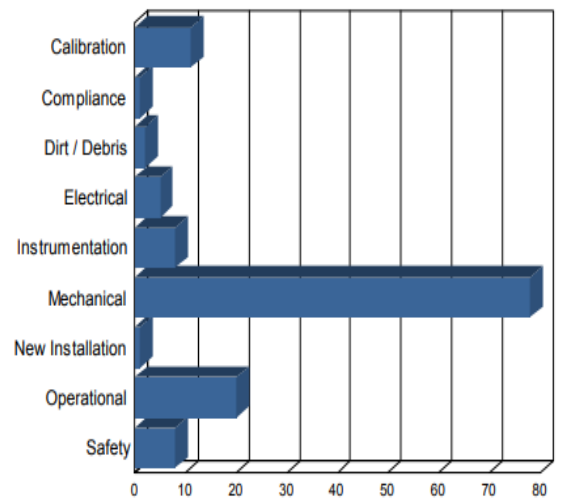
Start Date: 6/1/2022
End Date: 6/30/2022

Corrective Maintenance	21
Inspections	11
Preventative Maintenance	102
Total Work Orders	134

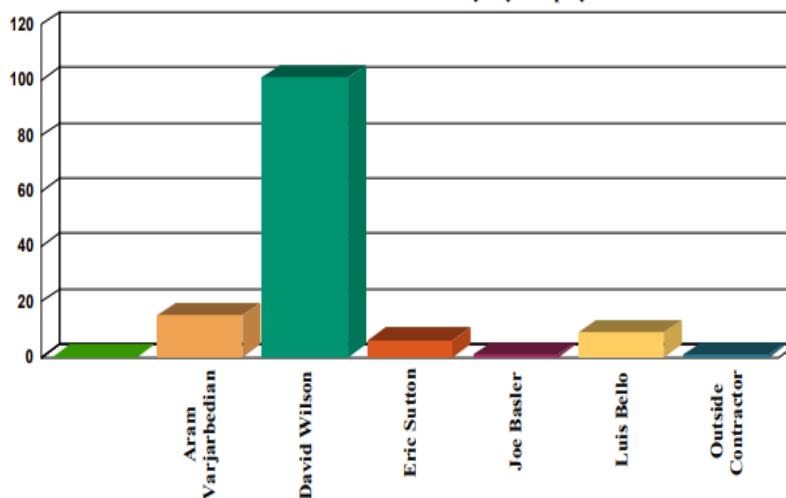
Work Order History By Type



Work Order History by Reason



Work Order History By Employee



Employee	WO Count	Labor Hours
Aram Varjarbedian	15	7
David Wilson	101	28
Eric Sutton	6	4
Joe Basler	1	1
Luis Bello	9	7
Outside Contractor	1	0
Unassigned	1	0
Totals	134	47

A. TASKS COMPLETED THIS MONTH

The SEMS monthly work order summary for June is attached for review.

Additional key items of note are listed below:

- Portable trash pump - Thompson unit #6A was disassembled by the plant staff and the rotating element was sent out to Seacoast Supply for their evaluation and repair. The parts ordered by the plant staff - new shaft, impeller, bearings, and mechanical seal.
- Portable trash pump - Thompson unit #6B – various items completed, and pump is now fully operational – new fuel pump, alternator, and fuel line. The onsite staff completed the repairs.
- Hi-Voltage Associates removed the old ceiling mounted lighting and installed new wall mounted lighting in the hypo pump room area. The old light fixtures were in disrepair and made before the new hypochlorite storage tanks were installed into the space.
- Work on the new hypochlorite system continued with the containment area coating system completed with a water test of the containment area successful. The new tanks rigged into the room, and the new hypo tanks were also water tested [no leaks or issues]. Piping work began for all the system lines. The temporary system was operational for the entire month.
- A Hoadley Vactor truck was onsite 6/28 to jet & clean out 12 manholes and lines in the Allerton Hill area that were recently replaced when streets paved. The excess grout was not cleaned up well by the sub-contractor.
- Hoadley returned on the next day [6/29] to clean out the Gravity Thickener (offline), Primary Clarifier #1 scum pit (offline), aeration tanks' blend box, and the wet wells at lift station A & Pump Station #4
- On 6/14 a low fluid level in the H2S scrubber system was found due to a cracked PVC fitting. A submersible pump was temporarily installed to keep the scrubber system operational until the new replacement PVC piping and valves were sourced and installed. A complete replacement of all the piping system components was needed, and the work was completed by the onsite W&C staff.
- The potable water fire hydrant by the operations building entrance was found to be leaking during use. The Weir River Water Company advised J. Hoadley, who used the hydrant, to make the repair. The water supply to the building was shut off in the street to allow for the repair to be made.

B. ASSET MANAGEMENT ACCOUNTS

- **Please see the attached summary totals and planned expenditures for the Asset Management accounts for contract year (8). Most recent through 7/27/22.**
- **Review year #7 – 07M, 07S, 07C costs/expenditures and preparing for contract year close statement.**

6 SAFETY



It is Woodard & Curran's policy to maintain a safe and healthy work environment for every employee and to comply with all applicable occupational health & safety regulations.

- No lost time incidents reported for June
- Monthly PM's - Emergency eyewash and shower inspections, fire extinguishers, and emergency lighting inspections completed.
- Monthly calibrations were performed on all MX4 & Max XT11 gas meters. Two MX 4s and a MAX XTII required new components prior to calibrations.
- On-going Covid-19 Pandemic awareness with daily review and as needed. Keeping in daily contact with all contractors regarding Hull and W&C covid-19 protocols. W&C's Pure Safety topic for June was "Vector-Borne Disease Awareness."
- Monthly W&C staff safety meeting was held on 6/30. Topics discussed were the looming summer heat & poisonous plants about the plant and pump stations, as well as aerial lifts, scaffolding, and guardrails in use for the ongoing HVAC project.
- Monthly safety inspection checklist completed.

7 STAFF DEVELOPMENT

Training is an important part of any operation to ensure employee health and safety is assured, quality standards are supported, staff skills are improved, career opportunities become available, and higher productivity is achieved.

Listed is a general outline of training that the staff received over the course of the month:

- Monthly staff Safety training completed – Pure Safety and the monthly safety meeting. Reviewing W&C's "near-miss" incidents at all the W&C projects occurring in May.
- Regular, usually daily- operational updates and process control discussions, pump station operations, Dig Safes, and the HVAC construction project work scope ongoing at the plant. Daily safety briefing and Covid-19 protocol updates if necessary.

Staffing related items:

- The project staffing plan was submitted with the monthly DMR.
- The regular staffing labor was primarily supplemented by O&M Specialist Paul Horigan, who sometimes covers the added shift left open by Aram V, and any other maintenance project needs as needed.
- Continued to have Saturday & Sunday staff coverage supplemented with part-time staff with intern Joel Terrio working Saturdays & Sundays and other weekdays as needed and he is available. This arrangement allows for the regular staff to be on site more during the week.
- Sunday licensed coverage rotation continued with Aram, Roger, Mike.
- Through June the staffing levels were not affected due to the ongoing Covid-19 virus pandemic.

8 COLLECTION SYSTEM

A. WET WELL CLEANING

The actual schedule for wet well cleaning: May 2022 to June 2023:

(X-Cleaned) - (Orange – Inspected) - (Green – See notes) - (blank – no work done)

Frequency of cleaning	Pump Station							
	A	1	3	4	5	6	9	D
May, 2022								
June, 2022	X			X				
July, 2022								
Aug., 2022								
Sept. 2022								
Oct., 2022								
Nov, 2022								
Dec., 2023								
Jan., 2023								
Feb., 2023								
March 2023								
April 2023								

All pump stations except for Pump Station 3 and Station D have an aerator/mixer in the wet wells.

B. COLLECTION SYSTEM MAINTENANCE

Collection system work is being documented and tracked in Utility Cloud and a summarized report for June has been included as an attachment with the Monthly Operating Report.

Woodard & Curran assisted/conducted camera work and sewer system support in the Hull collection system at the following areas during the month of June. Ongoing backup and blockage call outs requiring an increase in labor and time to support. Below summarizes W&C's efforts at the various call out locations.

- There were 5 calls for E-One Grinder pump service – see UC summary.
- A number of blockages were reported by homeowners - 45 Roosevelt (6/3), 13 Clifton (6/7), 106 Samoset (6/27) and 36 Atlantic House Rd (6/27) – for all cases – blockages were found to be issues with the homeowner lateral or inside the home and not the Town owned portion of the collection system. The homeowners were all advised to call a plumber.

- June 28 - twelve MH inspections and camera inspections [CCTV] completed in the Allerton Hill area. WC staff worked with the Hoadley Sewer Tech vactor/jet truck to clean the debris found in the manhole structures because of the recent manhole frame and cover work done due to the paving project in that area.
- In-Pipe units – ongoing maintenance of the dosing units as needed. Staff conducted board troubleshooting, dosing pump repairs, and replacements as needed.
- Pump station emergency generator runs- weekly no load runs and monthly loaded runs.
- All Pump station wet wells were inspected in June- monthly inspections are completed and combined with the monthly station PM's. LS A & PS 4 wet wells were cleaned out by a vactor truck.
- Upload new/updated tie-cards to the UC as required.
- On-going Dig-Safe mark outs. These are completed throughout the Town of Hull to assist and facilitate scheduled and emergency gas repairs, broken water mains, upcoming roadway paving projects, and other residential and town projects. All are listed in the UC summary.

9 PROJECT MANAGEMENT & ADMINISTRATION



A. ON-GOING PROJECTS AND SUPPORT ITEMS

June updates:

- Ongoing demo & construction work continued in many areas of the operations building for the HVAC project. W&C worked closely with the contractors, moving equipment & items as needed in the working areas to allow renovation work to continue. W&C staff checking in with the general contractor supervisor daily and joining the monthly meeting with Tighe & Bond and all sub-contractors.
- The temporary sodium hypochlorite system was in operation for the entire month. Due to the limited tank volume and difficulty getting the sodium hypochlorite [strong bleach], alternative vendors were sought to ensure inventory at the plant.
- Pump Station #4 – Pump #1 operation found to be deteriorating more quickly and the pump was designated for back up use only. Plans being made to ready the two new pumps for installation. New mechanical seals and barrier fluid systems for seal lubrication ordered.
- Continued to assist and support of engineering projects with review and feedback as needed.
- New MA DEP Sewage Notification Data System – WC staff signed up so that notifications and reports can be made electronically and within the required period for the Town of Hull in the event of a sanitary system overflow.
- 6/15 - Woodard & Curran Cybersecurity Measures for Hull - Respond to Town's request for information concerning cybersecurity measures taken by Woodard & Curran to protect Information Technology (IT) and Operational Technology (OT/SCADA) networks and systems.
- Work with the HSD on costs associated with January storm event. cost reconciliation.



Maintenance History Report

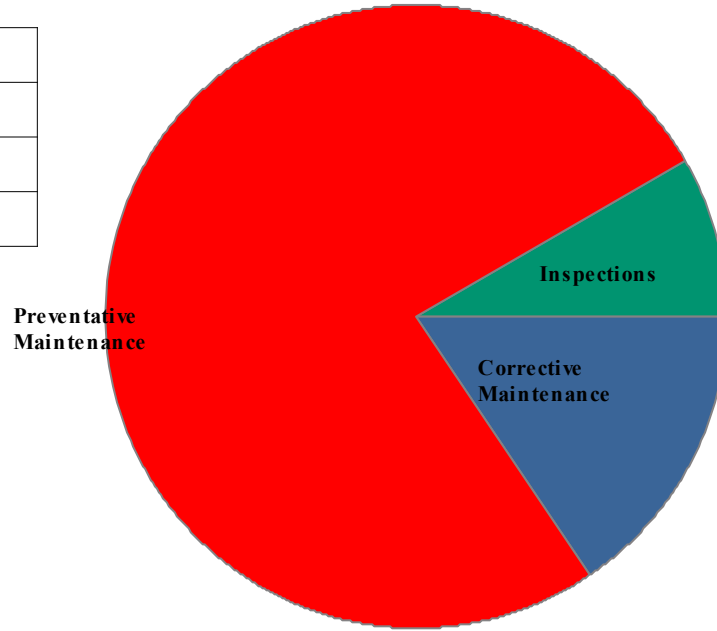
Start Date: 6/1/2022

End Date: 6/30/2022

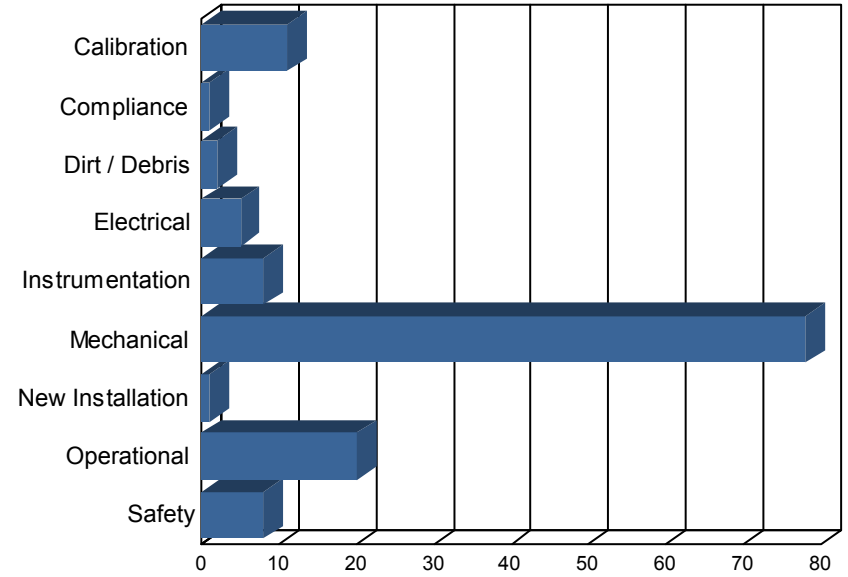
Hull Wastewater

Work Order History By Type

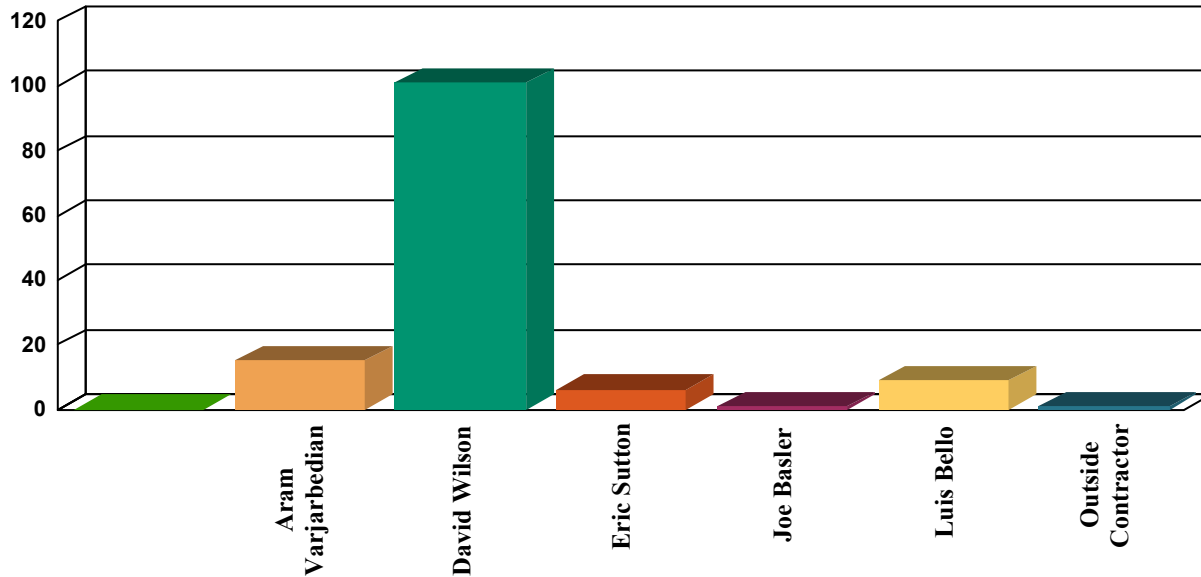
Corrective Maintenance	21
Inspections	11
Preventative Maintenance	102
Total Work Orders	134



Work Order History by Reason



Work Order History By Employee



Employee	WO Count	Labor Hours
Aram Varjarbedian	15	7
David Wilson	101	28
Eric Sutton	6	4
Joe Basler	1	1
Luis Bello	9	7
Outside Contractor	1	0
Unassigned	1	0
Totals	134	47

Corrective Maintenance

Status Date	WO #	Asset Name	Work Description	Work History Note	Employee	Schedule Date	Status
6/2/22	16097	Sludge Storage Tank 2	sample port - broken fitting	remove and replace with new fitting and hose to 5 gal pail	Aram Varjarbedian	6/2/22	Completed
6/2/22	16098	PS 4 Pump 1	Pump 1 tripped out.	Reset soft start from pump cabinet.	Luis Bello	6/2/22	Completed
6/2/22	16099	23 - WW Pump Stations	To cut the weeds that are growing around station 4.	I cutted all the weeds.	Luis Bello	6/2/22	Completed
6/3/22	16100	Ventis MX4 #3 - 4 Gas	H2S sensor failed.	Removed failed sensor. Installed new sensor and calibrated meter. All sensors passed. Put back into service.	David Wilson	6/3/22	Completed
6/3/22	16101	Ventis MX4 #2 - 4 Gas	O2 sensor failed.	Removed failed sensor. Cleaned sockets and installed new sensor. Calibrated meter. Put back into service.	David Wilson	6/3/22	Completed
6/3/22	16102	Ventis MX4 #5 - 4 Gas	O2 sensor failed.	Removed failed sensor. Ceaned sockets and installed new sensor. Calibrated meter and put back into service.	David Wilson	6/3/22	Completed
6/3/22	16103	30 - WW Treatment Plant - General	Lawnmower repair	Removed deck baffles for muching system. Straitened Bent baffle and installed new replacement baffle. Installed blade with new spacer and hardware. Fabricated support plate to run hurricane mulching system with side discharge chute.	David Wilson	6/3/22	Completed
6/4/22	16104	RAS Pump 2	low output flow	JB, JT cleaned out pump -rags/debris	Joe Basler	6/4/22	Completed
6/5/22	16105	RST Polymer feed pump	higher settings, yielding lower output	check all suction lines, fittings, replace tubing, and install new ball seats and pump diaphragm. pump was clear. Next run will determine if difference seen.	Aram Varjarbedian	6/5/22	Completed
6/7/22	16106	RST Water Booster Pump	Coupling failure	Removed failed coupling and cleaned inside of hubs. Inspected for wear. Installed new coupling and returned to service.	David Wilson	6/7/22	Completed
6/13/22	16108	Gravity Thickener 1	Annual service	Drained and refilled Amwell gearbox fluid. Lubed and adjusted drive chain. Replaced breather and zert fitting. Greased pinion gear. Repaired sheared bolt. Drilled and tapped welded in bolt. Replaced with Stainless hardware.	David Wilson	6/13/22	Completed
6/15/22	16109	Wet Scrubber Recirculation Pumps	Discharge plumbing failure.	LOTO of equipment. Inspected failure. Socket reducer failed. Multiple repairs along discharge pipe. Requires replacement. Installed Zoeller pump and made hose to fit from tank to existing plumbing. Installed new quick disconnect onto 2" ball valve. Routed wiring out of the way. Made parts list for replacement. New pump and motor will be installed with permanent repair.	David Wilson	6/15/22	Completed
6/17/22	16112	PS 1	High wetwell due to power outage	Es jb on site reset soft starts in cabinet, station operational	Eric Sutton	6/17/22	Completed
6/18/22	16111	PS A	High wetwell	Es lb on site, high wetwell observed breakers tripped for both pumps 1 and 2, due to power outage the night before. Reset breakers watch wetwell go down, and alternatated pumps to ensure both pumps operational	Eric Sutton	6/18/22	Completed

Corrective Maintenance

Status Date	WO #	Asset Name	Work Description	Work History Note	Employee	Schedule Date	Status
6/20/22	16113	Influent Composit Sampler	Suction line obstruction.	Pulled up suction line. Cleaned off rags. Washed pick up screen and cleared obstruction. Tested pump. Returned to service.	David Wilson	6/20/22	Completed
6/20/22	16114	RST unit	Inspect and replace drum support wheels	LOTO of drum motor. Removed rear panels for inspection. Inspected all wheels and found two that required attention. Replaced both wheels on feed side of drum. Lubed and adjusted drive chain. Returned to service.	David Wilson	6/20/22	Completed
6/28/22	16117	Snow Blower	Replace dented tank	Sub contractors damaged fuel tank on new snow blower. Drained fuel and uninstalled fuel tank. Removed petcock and fuel filter. Installed on new tank. Installed new tank. Put away in shed.	David Wilson	6/28/22	Completed
6/28/22	16116	Truck 2 - 2009 Chevy 2500 HD	Service charging system light.	Diagnosed intermittent charging issue to be failed regulator. Ordered part. Isolated battery and put on charger. Removed intake, upper fan shroud and serpentine belt. Uninstalled alternator and installed new part. Installed belt, shroud and intake. Installed battery. Load tested battery- good. Load tested alternator- good.	David Wilson	6/28/22	Completed
6/28/22	16118	Portable Diesel Pump 6B Thompson 6" 900 - 1000 gpm	Diagnose cranks but wont start.	Replaced fuel lines to verify no air in fuel circuit. Found fuel pump/ manual primer not working. Installed new fuel pump and bled out air from lines. Started right up. Let warm up for 10 minutes ate idle. Brought up to 2000 rpm and ran for 1 hour without issue.	David Wilson	6/28/22	Completed
6/28/22	16119	Portable Diesel Pump 6B Thompson 6" 900 - 1000 gpm	Diagnose starts but shuts down after 10 seconds.	Inspected all safety shut down circuits. Tested battery. Found charging system over voltage. Replaced alternator. Charging system fault cleared the the fuel pump let go. Diagnose cranks but wont start.	David Wilson	6/28/22	Completed
6/28/22	16120	Secondary Building	Replace failed pipe support for hose.	Cut out failed pipe support and threaded rod. Drilled and set new anchor. Installed new 3/4" pipe support.	David Wilson	6/28/22	Completed

Inspections

Status Date	WO #	Asset Name	Work Description	Work History Note	Employee	Schedule Date	Status
6/1/22	15462	Eyewash Stations	WWTF Eyewash Inspection - Weekly	Fixed eye wash station in hypo room has been demolished because of tank replacement. Fixed eye wash station next to caustic tank has been demolished and has a portable station in place.	David Wilson	5/29/22	Completed
6/5/22	15266	AST- Above Ground Storage tank for diesel fuel	Annual - AST inspection	Completed	Aram Varjarbedian	3/1/22	Completed
6/7/22	15757	Blower Room Exhaust Fan 1	Monthly operational inspection		David Wilson	6/1/22	Completed
6/7/22	15758	Blower Room Exhaust Fan 2	Monthly operational inspection		David Wilson	6/1/22	Completed
6/8/22	15552	Truck 1 - 2010 Dodge Ram 1500	Monthly vehicle inspection on do-Forms	Annual state safety inspection due. Air conditioner system needs to be recharged. Oil and filter change soon. Removed broken exhaust hanger.	David Wilson	5/2/22	Completed

Inspections

Status Date	WO #	Asset Name	Work Description	Work History Note	Employee	Schedule Date	Status
6/8/22	16107	Truck 1 - 2010 Dodge Ram 1500	Perform vehicle inspection	Inspected vehicle - See doFORMS report for full details.		6/8/22	Completed
6/10/22	15735	Truck 3 - 2015 Chevy 3500 HD	Monthly vehicle inspection on do-Forms		Eric Sutton	6/6/22	Completed
6/16/22	16110	Truck 3 - 2015 Chevy 3500 HD	Perform vehicle inspection	Inspected vehicle - See doFORMS report for full details.	Eric Sutton	6/16/22	Completed
6/17/22	15629	Emergency Lighting & exit signs	Emergency Lighting Inspection - Monthly		David Wilson	6/8/22	Completed
6/17/22	15573	Truck 3 - 2015 Chevy 3500 HD	Monthly vehicle inspection on do-Forms		Eric Sutton	5/2/22	Completed
6/20/22	16115	RAS Pump 3	Diagnose unusual noise.	Listened to pump run and observed frequency. Constant bearing whirr at 32hz. Lower bearing seal recently failed. Melted grease slung out to frame. Increased frequency to 40 hz. Noise gone. Deceased frequency until noise returned. 34hz the whirr returned. Set to 36hz and regreased bearings. Reccomend bearing replaced before mechanical seal fails.	David Wilson	6/20/22	Completed

Preventative Maintenance

Status Date	WO #	Asset Name	Work Description	Work History Note	Employee	Schedule Date	Status
6/1/22	15567	GasAlert Max XTII #2	monthly calibration	Calibration failed. O2 sensor not responding properly.	David Wilson	5/26/22	Completed
6/1/22	15557	Ventis MX4 #2 - 4 Gas	4 Gas Meter #2 Calibration - Monthly	Calibration failed. H2S and O2 sensor failures.	David Wilson	5/26/22	Completed
6/1/22	15558	Ventis MX4 #3 - 4 Gas	4 Gas Meter #3 Calibration - Monthly	Calibration failed. O2 sensor not responding properly.	David Wilson	5/26/22	Completed
6/1/22	15559	Ventis MX4 #4 - 4 Gas	4 Gas Meter #4 Calibration - Monthly		David Wilson	5/26/22	Completed
6/1/22	15560	Ventis MX4 #5 - 4 Gas	4 Gas Meter #5 Calibration - Monthly		David Wilson	5/26/22	Completed
6/1/22	15561	Ventis MX4 #6 - 4 Gas	4 Gas Meter #6 Calibration - Monthly		David Wilson	5/26/22	Completed
6/2/22	15639	Influent Sluice Isolation Gate	Weekly operate through full range	Done and set to 15%	Aram Varjarbedian	6/1/22	Completed
6/3/22	15589	Generators "All Pump Station"	Generator Weekly - Test Run no load		Luis Bello	5/30/22	Completed
6/5/22	15734	Chlorine probe ATI	Change electrolyte	Chg electrolyte and membrane	Aram Varjarbedian	6/1/22	Completed
6/5/22	15569	Chlorine probe ATI	Weekly calibration	Closeout, serviced 6/5	Aram Varjarbedian	5/9/22	Completed
6/5/22	15570	Chlorine probe ATI	Weekly calibration	Closeout, serviced 6/5	Aram Varjarbedian	5/23/22	Completed
6/5/22	15572	Chlorine probe ATI	ATI, change membrane	Closeout, serviced 6/5 chg membrane 6/5	Aram Varjarbedian	5/1/22	Completed
6/5/22	15412	Chlorine probe ATI	Weekly calibration	Close out, serviced 6/5	Aram Varjarbedian	4/25/22	Completed
6/5/22	15571	Chlorine probe ATI	Change electrolyte	Closeout, serviced 6/5	Aram Varjarbedian	5/1/22	Completed
6/5/22	15087	Chlorine probe ATI	ATI, change membrane	Closeout	Aram Varjarbedian	2/1/22	Completed
6/5/22	15086	Chlorine probe ATI	Change electrolyte	Closeout	Aram Varjarbedian	2/1/22	Completed

Preventative Maintenance

Status Date	WO #	Asset Name	Work Description	Work History Note	Employee	Schedule Date	Status
6/5/22	15256	Chlorine probe AT1	Change electrolyte	Closeout, serviced 6/5	Aram Varjarbedian	3/1/22	Completed
6/5/22	15413	Chlorine probe AT1	Change electrolyte	Closeout, serviced 6/5	Aram Varjarbedian	4/1/22	Completed
6/6/22	15681	PS 1 Generator	PS #1 Generator Inspection and Load Test - Monthly		David Wilson	6/1/22	Completed
6/6/22	15676	PS 1 Generator	PS #1 Generator Inspection and Test - Weekly		David Wilson	6/1/22	Completed
6/6/22	15682	PS 3 Generator	PS #3 Generator Inspection and Load Test - Monthly		David Wilson	6/1/22	Completed
6/6/22	15683	PS 3 Generator	PS #3 Generator Inspection and Test - Weekly		David Wilson	6/1/22	Completed
6/6/22	15693	PS 4 Generator	PS #4 Generator Inspection and Load Test - Monthly		David Wilson	6/1/22	Completed
6/6/22	15688	PS 4 Generator	PS #4 Generator Inspection and Test - Weekly		David Wilson	6/1/22	Completed
6/6/22	15694	PS 5 Generator	PS #5 Generator Inspection and Load Test - Monthly		David Wilson	6/1/22	Completed
6/6/22	15695	PS 5 Generator	PS #5 Generator Inspection and Test - Weekly		David Wilson	6/1/22	Completed
6/6/22	15706	PS 6 Generator	PS #6 Generator Inspection and Test - Weekly		David Wilson	6/1/22	Completed
6/6/22	15711	PS 6 Generator	PS #5 Generator Inspection and Load Test - Monthly		David Wilson	6/1/22	Completed
6/6/22	15700	PS 9 Generator	PS #9 Generator Inspection and Load Test - Monthly		David Wilson	6/1/22	Completed
6/6/22	15701	PS 9 Generator	PS #9 Generator Inspection and Test - Weekly		David Wilson	6/1/22	Completed
6/6/22	15761	Secondary Effluent Isolation Gate	Isolation Valve Exercise		David Wilson	6/3/22	Completed
6/6/22	15714	GasAlert Max XTII #1	4 gas meter calibration - monthly	Meter out of service due to failed oxygen sensor.	David Wilson	6/1/22	Completed
6/6/22	15155	Fixed Gas Monitoring System	Quarterly Calibration Headworks room gas meters	H2S sensor on backorder.	David Wilson	3/2/22	Completed
6/6/22	15638	Fixed Gas Monitoring System	Quarterly Calibration Headworks room gas meters	New H2S sensor installed and calibrated. All sensors functioning properly.	David Wilson	6/1/22	Completed
6/6/22	15657	RAS Pump 1	Monthly Check Pump Couplings		David Wilson	6/1/22	Completed
6/6/22	15658	RAS Pump 2	Monthly Check Pump Couplings		David Wilson	6/1/22	Completed
6/6/22	15659	RAS Pump 3	Monthly Check Pump Couplings		David Wilson	6/1/22	Completed
6/6/22	15718	PS Kholer Trailer Mounted Generator	Generator - Monthly Load Test		Luis Bello	6/5/22	Completed
6/6/22	15747	Generators "All Pump Station"	Generator - Monthly Load Test		Luis Bello	6/5/22	Completed
6/6/22	15555	PS Kholer Trailer Mounted Generator	Generator Weekly - Test Run no load		Luis Bello	5/30/22	Completed
6/7/22	15624	Portable Generator - Honda	Portable Generator Inspection - Monthly		David Wilson	6/1/22	Completed
6/8/22	15477	Influent Pump 1	Monthly Check Pump Couplings		David Wilson	5/4/22	Completed
6/8/22	15478	Influent Pump 2	Monthly Check Pump Couplings		David Wilson	5/4/22	Completed

Preventative Maintenance

Status Date	WO #	Asset Name	Work Description	Work History Note	Employee	Schedule Date	Status
6/8/22	15479	Influent Pump 3	Monthly Check Pump Couplings		David Wilson	5/4/22	Completed
6/8/22	15480	Influent Pump 4	Monthly Check Pump Couplings		David Wilson	5/4/22	Completed
6/8/22	15481	Influent Pump 5	Monthly Check Pump Couplings		David Wilson	5/4/22	Completed
6/8/22	15645	Influent Pump 1	Monthly Check Pump Couplings		David Wilson	6/1/22	Completed
6/8/22	15646	Influent Pump 2	Monthly Check Pump Couplings		David Wilson	6/1/22	Completed
6/8/22	15647	Influent Pump 3	Monthly Check Pump Couplings		David Wilson	6/1/22	Completed
6/8/22	15648	Influent Pump 4	Monthly Check Pump Couplings		David Wilson	6/1/22	Completed
6/8/22	15649	Influent Pump 5	Monthly Check Pump Couplings		David Wilson	6/1/22	Completed
6/8/22	15751	All Plant Gear box reducers	GEAR BOX MAINT - WEEKLY		David Wilson	6/5/22	Completed
6/8/22	15737	High level floats	Weekly High Float Alarm test		David Wilson	6/5/22	Completed
6/8/22	15665	Primary Sludge Pump 1	Monthly Check Pump Couplings		David Wilson	6/1/22	Completed
6/8/22	15661	RST Feed Pump 2	Monthly Check Pump Couplings		David Wilson	6/1/22	Completed
6/8/22	15666	Primary Sludge Pump 2	Monthly Check Pump Couplings		David Wilson	6/1/22	Completed
6/8/22	15668	Sludge Transfer Pump 2	Monthly Check Pump Couplings		David Wilson	6/1/22	Completed
6/8/22	15677	PS 1 Generator	PS #1 Generator Inspection and Test - Weekly		David Wilson	6/8/22	Completed
6/8/22	15684	PS 3 Generator	PS #3 Generator Inspection and Test - Weekly		David Wilson	6/8/22	Completed
6/8/22	15689	PS 4 Generator	PS #4 Generator Inspection and Test - Weekly		David Wilson	6/8/22	Completed
6/8/22	15640	Influent Sluice Isolation Gate	Weekly operate through full range		David Wilson	6/8/22	Completed
6/8/22	15702	PS 9 Generator	PS #9 Generator Inspection and Test - Weekly		David Wilson	6/8/22	Completed
6/8/22	15707	PS 6 Generator	PS #6 Generator Inspection and Test - Weekly		David Wilson	6/8/22	Completed
6/8/22	15696	PS 5 Generator	PS #5 Generator Inspection and Test - Weekly		David Wilson	6/8/22	Completed
6/9/22	15745	pH meter	Clean and Calibrate		David Wilson	6/1/22	Completed
6/9/22	15644	Mechanical Screen & Washpress System	Monthly Maintenance		David Wilson	6/6/22	Completed
6/9/22	15652	Aeration Tank 1 Oxygen Probe	AT #1 DO Probe Clean and Calibrate - Monthly		David Wilson	6/7/22	Completed
6/9/22	15653	Aeration Tank 3 Oxygen Probe	AT #3 DO Probe Clean and Calibrate - Monthly		David Wilson	6/7/22	Completed
6/9/22	15656	Wet Scrubber Fan	Scrubber Exhaust Fan PM - Monthly		David Wilson	6/8/22	Completed
6/10/22	15746	ORP meter	Clean and Calibrate		David Wilson	6/10/22	Completed
6/10/22	15663	Secondary Scum Pump 1	Pen Valley Double Disc pumps - Quarterly		David Wilson	6/9/22	Completed
6/10/22	15664	Secondary Scum Pump 2	Pen Valley Double Disc pumps - Quarterly		David Wilson	6/9/22	Completed

Preventative Maintenance

Status Date	WO #	Asset Name	Work Description	Work History Note	Employee	Schedule Date	Status
6/13/22	15662	Primary Scum Pump	Pen Valley Double Disc pumps - Quarterly		David Wilson	6/9/22	Completed
6/14/22	15738	High level floats	Weekly High Float Alarm test		Luis Bello	6/12/22	Completed
6/17/22	15641	Influent Sluice Isolation Gate	Weekly operate through full range		David Wilson	6/15/22	Completed
6/17/22	15748	Generators "All Pump Station"	Generator Weekly - Test Run no load		David Wilson	6/13/22	Completed
6/17/22	15678	PS 1 Generator	PS #1 Generator Inspection and Test - Weekly		David Wilson	6/15/22	Completed
6/17/22	15685	PS 3 Generator	PS #3 Generator Inspection and Test - Weekly		David Wilson	6/15/22	Completed
6/17/22	15690	PS 4 Generator	PS #4 Generator Inspection and Test - Weekly		David Wilson	6/15/22	Completed
6/17/22	15708	PS 6 Generator	PS #6 Generator Inspection and Test - Weekly		David Wilson	6/15/22	Completed
6/17/22	15697	PS 5 Generator	PS #5 Generator Inspection and Test - Weekly		David Wilson	6/15/22	Completed
6/17/22	15703	PS 9 Generator	PS #9 Generator Inspection and Test - Weekly		David Wilson	6/15/22	Completed
6/17/22	15630	Generator #2 - Backup Detroit 500	Generator Weekly - Test Run no load		David Wilson	6/13/22	Completed
6/17/22	15752	All Plant Gear box reducers	GEAR BOX MAINT - WEEKLY		David Wilson	6/12/22	Completed
6/17/22	15633	Generator #1- Emergency Kohler 750	Generator Weekly - Test Run no load		David Wilson	6/13/22	Completed
6/17/22	15719	PS Kholer Trailer Mounted Generator	Generator Weekly - Test Run no load		David Wilson	6/13/22	Completed
6/21/22	15732	Chlorine probe ATI	Weekly calibration	Chg memr cap and solution. Let it set overnight. Recal on 6/21	Aram Varjarbedian	6/6/22	Completed
6/22/22	15728	Building Flood Conrtol	Semi Annual PM of Flood Gates		David Wilson	6/16/22	Completed
6/22/22	15634	Generator #1- Emergency Kohler 750	Generator Weekly - Test Run no load		David Wilson	6/20/22	Completed
6/22/22	15749	Generators "All Pump Station"	Generator Weekly - Test Run no load		Eric Sutton	6/20/22	Completed
6/22/22	15631	Generator #2 - Backup Detroit 500	Generator Weekly - Test Run no load		Luis Bello	6/20/22	Completed
6/22/22	15720	PS Kholer Trailer Mounted Generator	Generator Weekly - Test Run no load		David Wilson	6/20/22	Completed
6/22/22	15753	All Plant Gear box reducers	GEAR BOX MAINT - WEEKLY		David Wilson	6/19/22	Completed
6/22/22	15739	High level floats	Weekly High Float Alarm test		Luis Bello	6/19/22	Completed
6/23/22	15742	Truck 5 - Fork truck Doosan G25E-5	Annual PM	WD Matthews in to complete annual service.	Outside Contractor	6/16/22	Completed
6/24/22	15642	Influent Sluice Isolation Gate	Weekly operate through full range		David Wilson	6/22/22	Completed
6/24/22	15679	PS 1 Generator	PS #1 Generator Inspection and Test - Weekly		David Wilson	6/22/22	Completed
6/24/22	15686	PS 3 Generator	PS #3 Generator Inspection and Test - Weekly		David Wilson	6/22/22	Completed
6/24/22	15691	PS 4 Generator	PS #4 Generator Inspection and Test - Weekly		David Wilson	6/22/22	Completed

Preventative Maintenance

Status Date	WO #	Asset Name	Work Description	Work History Note	Employee	Schedule Date	Status
6/24/22	15709	PS 6 Generator	PS #6 Generator Inspection and Test - Weekly		David Wilson	6/22/22	Completed
6/24/22	15698	PS 5 Generator	PS #5 Generator Inspection and Test - Weekly		David Wilson	6/22/22	Completed
6/24/22	15704	PS 9 Generator	PS #9 Generator Inspection and Test - Weekly		David Wilson	6/22/22	Completed

Date	Asset ID	Asset Description	Asset Class	Name	Workflow Class
6/30/2022 7:50	05-029	1 VAUTRINOT AVE	Hull Parcels	Sutton, Eric	Hull - Markout
6/22/2022 14:05	05-068	15 HIGHLAND AVE	Hull Parcels	Sutton, Eric	Hull - Markout
6/18/2022 14:16	1 Rowley St	1 Rowley St Grinder Pump	Hull Grinder Pumps	Sutton, Eric	Hull - Grinder Pump Maintenance
6/9/2022 15:08	10-005	67 PT ALLERTON AVE	Hull Parcels	Sutton, Eric	Hull - Markout
6/22/2022 14:16	10-008	51 PT ALLERTON AVE	Hull Parcels	Sutton, Eric	Hull - Markout
6/7/2022 14:55	10-042	34 PT ALLERTON AVE	Hull Parcels	Sutton, Eric	Hull - Markout
6/10/2022 12:36	10-056	0 PT ALLERTON AVE	Hull Parcels	Sutton, Eric	Hull - Markout
6/21/2022 13:20	10-090	42 BEACON RD	Hull Parcels	Sutton, Eric	Hull - Markout
6/30/2022 8:09	13-080	154 CADISH AVE	Hull Parcels	Sutton, Eric	Hull - Markout
6/18/2022 10:24	14 Nantasket Ave	14 Nantasket Ave Grinder Pump	Hull Grinder Pumps	Sutton, Eric	Hull - Grinder Pump Maintenance
6/30/2022 8:32	14-075	90 CADISH AVE	Hull Parcels	Sutton, Eric	Hull - Markout
6/29/2022 14:51	15-054	32 L STREET	Hull Parcels	Sutton, Eric	Hull - Markout
6/1/2022 14:07	16 Shore Gardens Rd	16 Shore Gardens Rd Grinder Pump	Hull Grinder Pumps	Sutton, Eric	Hull - Grinder Pump Maintenance
6/13/2022 13:15	17-173	722 NANTASKET AVE	Hull Parcels	Sutton, Eric	Hull - Markout
6/22/2022 7:30	19 Harwich St	19 Harwich St Grinder Pump	Hull Grinder Pumps	Sutton, Eric	Hull - Grinder Pump Maintenance
6/7/2022 14:58	23-003	541 NANTASKET AVE	Hull Parcels	Sutton, Eric	Hull - Markout
6/27/2022 13:16	23-108	106 SAMOSET AVE	Hull Parcels	Sutton, Eric	Hull - Sewer Backup
6/10/2022 8:32	24-165	36 PACKARD AVE	Hull Parcels	Sutton, Eric	Hull - Markout
6/8/2022 8:18	25-170	24 MALTA ST	Hull Parcels	Sutton, Eric	Hull - Markout
6/8/2022 15:19	26-216	475 NANTASKET AVE	Hull Parcels	Sutton, Eric	Hull - Sewer Backup
6/14/2022 12:30	28-038	26 BELMONT ST	Hull Parcels	Sutton, Eric	Hull - Markout
6/30/2022 9:38	30-053	102 EDGEWATER RD	Hull Parcels	Sutton, Eric	Hull - Markout
6/30/2022 8:44	30-062	4 SEVENTH ST	Hull Parcels	Sutton, Eric	Hull - Markout
6/7/2022 14:52	31-069	11 CLIFTON AVE	Hull Parcels	Sutton, Eric	Hull - Sewer Backup
6/6/2022 12:55	34-030	11 HILLSIDE RD	Hull Parcels	Sutton, Eric	Hull - Sewer Backup
6/13/2022 9:08	35-053	26 FAIRMOUNT WAY	Hull Parcels	Sutton, Eric	Hull - Markout
6/30/2022 9:33	39-120	50 WYOLA RD	Hull Parcels	Sutton, Eric	Hull - Markout
6/18/2022 14:13	44 Chatham St	44 Chatham St Grinder Pump	Hull Grinder Pumps	Sutton, Eric	Hull - Grinder Pump Maintenance
6/22/2022 11:53	45-168	56 NORTH TRURO ST	Hull Parcels	Sutton, Eric	Hull - Markout
6/27/2022 13:08	49-069	36 ATLANTIC HSE RD	Hull Parcels	Sutton, Eric	Hull - Sewer Backup
6/27/2022 13:20	49-069	36 ATLANTIC HSE RD	Hull Parcels	Sutton, Eric	Hull - Sewer Backup
6/8/2022 7:02	49-077	10 VALLEY BEACH AVE	Hull Parcels	Sutton, Eric	Hull - Markout
6/8/2022 7:04	49-080	244 ATLANTIC AVE	Hull Parcels	Sutton, Eric	Hull - Markout
6/8/2022 7:14	49-081	233 ATLANTIC AVE	Hull Parcels	Sutton, Eric	Hull - Markout
6/8/2022 7:11	49-083-A	239 ATLANTIC AVE	Hull Parcels	Sutton, Eric	Hull - Markout
6/22/2022 9:08	51-004	12 MONTANA AVE	Hull Parcels	Sutton, Eric	Hull - Markout
6/8/2022 13:27	51-007	187 ATLANTIC AVE	Hull Parcels	Sutton, Eric	Hull - Markout
6/8/2022 13:03	51-009	205 ATLANTIC AVE	Hull Parcels	Sutton, Eric	Hull - Markout

Date	Asset ID	Asset Description	Asset Class	Name	Workflow Class
6/8/2022 13:01	51-010	207 ATLANTIC AVE	Hull Parcels	Sutton, Eric	Hull - Markout
6/8/2022 12:59	51-011	211 ATLANTIC AVE	Hull Parcels	Sutton, Eric	Hull - Markout
6/8/2022 12:52	51-022	215 ATLANTIC AVE	Hull Parcels	Sutton, Eric	Hull - Markout
6/8/2022 12:50	51-023	219 ATLANTIC AVE	Hull Parcels	Sutton, Eric	Hull - Markout
6/8/2022 7:20	51-024	0 ATLANTIC AVE	Hull Parcels	Sutton, Eric	Hull - Markout
6/8/2022 7:18	51-025	227 ATLANTIC AVE	Hull Parcels	Sutton, Eric	Hull - Markout
6/8/2022 12:55	51-027	212 ATLANTIC AVE	Hull Parcels	Sutton, Eric	Hull - Markout
6/8/2022 13:06	51-028	208 ATLANTIC AVE	Hull Parcels	Sutton, Eric	Hull - Markout
6/8/2022 13:21	51-031	196 ATLANTIC AVE	Hull Parcels	Sutton, Eric	Hull - Markout
6/8/2022 13:13	51-049-C	206 ATLANTIC AVE	Hull Parcels	Sutton, Eric	Hull - Markout
6/8/2022 7:09	51-050	242 ATLANTIC AVE	Hull Parcels	Sutton, Eric	Hull - Markout
6/7/2022 15:00	51-105	214 ATLANTIC AVE	Hull Parcels	Sutton, Eric	Hull - Markout
6/7/2022 15:02	51-106	1 SEA VIEW AVE	Hull Parcels	Sutton, Eric	Hull - Markout
6/7/2022 15:03	51-108	3 SEA VIEW AVE	Hull Parcels	Sutton, Eric	Hull - Markout
6/7/2022 15:05	51-108	3 SEA VIEW AVE	Hull Parcels	Sutton, Eric	Hull - Markout
6/7/2022 15:10	51-109	5 SEA VIEW AVE	Hull Parcels	Sutton, Eric	Hull - Markout
6/7/2022 15:11	51-110	11 SEA VIEW AVE	Hull Parcels	Sutton, Eric	Hull - Markout
6/7/2022 15:13	51-115	12 SEA VIEW AVE	Hull Parcels	Sutton, Eric	Hull - Markout
6/7/2022 15:12	51-117	8 SEA VIEW AVE	Hull Parcels	Sutton, Eric	Hull - Markout
6/7/2022 15:08	51-118	6 SEA VIEW AVE	Hull Parcels	Sutton, Eric	Hull - Markout
6/7/2022 15:06	51-121	2 SEA VIEW AVE	Hull Parcels	Sutton, Eric	Hull - Markout
6/8/2022 13:40	51-133	188 ATLANTIC AVE	Hull Parcels	Sutton, Eric	Hull - Markout
6/8/2022 14:21	52-012	170 ATLANTIC AVE	Hull Parcels	Sutton, Eric	Hull - Markout
6/8/2022 14:13	52-013	172 ATLANTIC AVE	Hull Parcels	Sutton, Eric	Hull - Markout
6/8/2022 14:09	52-014	174 ATLANTIC AVE	Hull Parcels	Sutton, Eric	Hull - Markout
6/8/2022 13:44	52-015	184 ATLANTIC AVE	Hull Parcels	Sutton, Eric	Hull - Markout
6/8/2022 13:42	52-016	186 ATLANTIC AVE	Hull Parcels	Sutton, Eric	Hull - Markout
6/9/2022 8:20	52-018	158 ATLANTIC AVE	Hull Parcels	Sutton, Eric	Hull - Markout
6/9/2022 8:25	52-019	156 ATLANTIC AVE	Hull Parcels	Sutton, Eric	Hull - Markout
6/9/2022 8:30	52-020	152 ATLANTIC AVE	Hull Parcels	Sutton, Eric	Hull - Markout
6/9/2022 8:33	52-021	150 ATLANTIC AVE	Hull Parcels	Sutton, Eric	Hull - Markout
6/9/2022 8:36	52-022	146 ATLANTIC AVE	Hull Parcels	Sutton, Eric	Hull - Markout
6/9/2022 8:40	52-023	144 ATLANTIC AVE	Hull Parcels	Sutton, Eric	Hull - Markout
6/9/2022 8:44	52-042	145 ATLANTIC AVE	Hull Parcels	Sutton, Eric	Hull - Markout
6/9/2022 8:14	52-044	155 ATLANTIC AVE	Hull Parcels	Sutton, Eric	Hull - Markout
6/9/2022 8:11	52-045	148 A ATLANTIC AVE	Hull Parcels	Sutton, Eric	Hull - Markout
6/9/2022 8:07	52-046	163 ATLANTIC AVE	Hull Parcels	Sutton, Eric	Hull - Markout
6/9/2022 7:56	52-047	165 ATLANTIC AVE	Hull Parcels	Sutton, Eric	Hull - Markout

Date	Asset ID	Asset Description	Asset Class	Name	Workflow Class
6/9/2022 7:58	52-048	163 A ATLANTIC AVE	Hull Parcels	Sutton, Eric	Hull - Markout
6/9/2022 7:54	52-049	167 ATLANTIC AVE	Hull Parcels	Sutton, Eric	Hull - Markout
6/9/2022 7:51	52-050	169 ATLANTIC AVE	Hull Parcels	Sutton, Eric	Hull - Markout
6/8/2022 14:06	52-051	171 ATLANTIC AVE	Hull Parcels	Sutton, Eric	Hull - Markout
6/8/2022 14:05	52-052	173 ATLANTIC AVE	Hull Parcels	Sutton, Eric	Hull - Markout
6/8/2022 14:01	52-053	175 ATLANTIC AVE	Hull Parcels	Sutton, Eric	Hull - Markout
6/8/2022 13:55	52-056-A	179 ATLANTIC AVE	Hull Parcels	Sutton, Eric	Hull - Markout
6/9/2022 8:42	52-057	140 ATLANTIC AVE	Hull Parcels	Sutton, Eric	Hull - Markout
6/9/2022 14:31	53-001	89 ATLANTIC AVE	Hull Parcels	Sutton, Eric	Hull - Markout
6/9/2022 14:25	53-006	103 ATLANTIC AVE	Hull Parcels	Sutton, Eric	Hull - Markout
6/9/2022 14:21	53-007	105 ATLANTIC AVE	Hull Parcels	Sutton, Eric	Hull - Markout
6/9/2022 14:19	53-008	107 ATLANTIC AVE	Hull Parcels	Sutton, Eric	Hull - Markout
6/9/2022 14:17	53-009	107 A ATLANTIC AVE	Hull Parcels	Sutton, Eric	Hull - Markout
6/9/2022 14:15	53-010	109 ATLANTIC AVE	Hull Parcels	Sutton, Eric	Hull - Markout
6/9/2022 13:58	53-011	111 ATLANTIC AVE	Hull Parcels	Sutton, Eric	Hull - Markout
6/9/2022 13:56	53-012	113 ATLANTIC AVE	Hull Parcels	Sutton, Eric	Hull - Markout
6/9/2022 13:41	53-013	115 ATLANTIC AVE	Hull Parcels	Sutton, Eric	Hull - Markout
6/9/2022 13:38	53-014	117 ATLANTIC AVE	Hull Parcels	Sutton, Eric	Hull - Markout
6/9/2022 12:19	53-015	119 ATLANTIC AVE	Hull Parcels	Sutton, Eric	Hull - Markout
6/9/2022 10:49	53-017-A	123 A ATLANTIC AVE	Hull Parcels	Sutton, Eric	Hull - Markout
6/9/2022 10:47	53-018	125 ATLANTIC AVE	Hull Parcels	Sutton, Eric	Hull - Markout
6/9/2022 9:07	53-019	127 ATLANTIC AVE	Hull Parcels	Sutton, Eric	Hull - Markout
6/9/2022 9:58	53-019	127 ATLANTIC AVE	Hull Parcels	Sutton, Eric	Hull - Markout
6/9/2022 9:01	53-020	137 ATLANTIC AVE	Hull Parcels	Sutton, Eric	Hull - Markout
6/9/2022 9:04	53-023	135 ATLANTIC AVE	Hull Parcels	Sutton, Eric	Hull - Markout
6/9/2022 8:48	53-026	134 ATLANTIC AVE	Hull Parcels	Sutton, Eric	Hull - Markout
6/9/2022 8:51	53-028-A	128 ATLANTIC AVE	Hull Parcels	Sutton, Eric	Hull - Markout
6/9/2022 8:53	53-028-B	0 ATLANTIC AVE	Hull Parcels	Sutton, Eric	Hull - Markout
6/9/2022 10:53	53-031	126 ATLANTIC AVE	Hull Parcels	Sutton, Eric	Hull - Markout
6/9/2022 10:52	53-033	124 ATLANTIC AVE	Hull Parcels	Sutton, Eric	Hull - Markout
6/9/2022 8:55	53-035	122 ATLANTIC AVE	Hull Parcels	Sutton, Eric	Hull - Markout
6/9/2022 8:59	53-036	120 ATLANTIC AVE	Hull Parcels	Sutton, Eric	Hull - Markout
6/9/2022 13:40	53-037	118 ATLANTIC AVE	Hull Parcels	Sutton, Eric	Hull - Markout
6/9/2022 13:43	53-038	116 ATLANTIC AVE	Hull Parcels	Sutton, Eric	Hull - Markout
6/9/2022 13:46	53-039	116 A ATLANTIC AVE	Hull Parcels	Sutton, Eric	Hull - Markout
6/9/2022 14:00	53-040	114 ATLANTIC AVE	Hull Parcels	Sutton, Eric	Hull - Markout
6/9/2022 14:02	53-042	112 ATLANTIC AVE	Hull Parcels	Sutton, Eric	Hull - Markout
6/9/2022 14:05	53-043	110 ATLANTIC AVE	Hull Parcels	Sutton, Eric	Hull - Markout

Date	Asset ID	Asset Description	Asset Class	Name	Workflow Class
6/9/2022 14:10	53-044	108 ATLANTIC AVE	Hull Parcels	Sutton, Eric	Hull - Markout
6/9/2022 14:28	53-045	106 ATLANTIC AVE	Hull Parcels	Sutton, Eric	Hull - Markout
6/9/2022 14:33	53-053	90 ATLANTIC AVE	Hull Parcels	Sutton, Eric	Hull - Markout
6/9/2022 14:35	53-054	88 ATLANTIC AVE	Hull Parcels	Sutton, Eric	Hull - Markout
6/9/2022 15:02	54-001	40 ATLANTIC AVE	Hull Parcels	Sutton, Eric	Hull - Markout
6/9/2022 15:04	54-009-A	38 ATLANTIC AVE	Hull Parcels	Sutton, Eric	Hull - Markout
6/9/2022 15:00	54-035	76 ATLANTIC AVE	Hull Parcels	Sutton, Eric	Hull - Markout
6/9/2022 14:56	54-035-A	78 ATLANTIC AVE	Hull Parcels	Sutton, Eric	Hull - Markout
6/9/2022 14:52	54-037	79 ATLANTIC AVE	Hull Parcels	Sutton, Eric	Hull - Markout
6/9/2022 14:50	54-038	81 ATLANTIC AVE	Hull Parcels	Sutton, Eric	Hull - Markout
6/9/2022 14:48	54-040	0 ATLANTIC AVE	Hull Parcels	Sutton, Eric	Hull - Markout
6/9/2022 14:37	54-041	86 ATLANTIC AVE	Hull Parcels	Sutton, Eric	Hull - Markout
6/9/2022 14:39	54-042	84 ATLANTIC AVE	Hull Parcels	Sutton, Eric	Hull - Markout
6/9/2022 14:42	54-043	82 A ATLANTIC AVE	Hull Parcels	Sutton, Eric	Hull - Markout
6/9/2022 14:45	54-044	82 ATLANTIC AVE	Hull Parcels	Sutton, Eric	Hull - Markout
6/9/2022 14:54	54-045	80 ATLANTIC AVE	Hull Parcels	Sutton, Eric	Hull - Markout
6/10/2022 12:39	Bacteria UNIT #21	UNIT #21	Hull In Pipe Bacteria Unit	Sutton, Eric	Hull - In Pipe Bacteria Units
6/16/2022 14:04	Bacteria UNIT #21	UNIT #21	Hull In Pipe Bacteria Unit	Sutton, Eric	Hull - In Pipe Bacteria Units
6/30/2022 13:32	Bacteria UNIT #21	UNIT #21	Hull In Pipe Bacteria Unit	Sutton, Eric	Hull - In Pipe Bacteria Units
6/16/2022 14:13	Bacteria UNIT #22	UNIT #22	Hull In Pipe Bacteria Unit	Sutton, Eric	Hull - In Pipe Bacteria Units
6/16/2022 13:54	Bateria UNIT # 8	UNIT # 8	Hull In Pipe Bacteria Unit	Sutton, Eric	Hull - In Pipe Bacteria Units
6/16/2022 13:49	Bateria UNIT #1	UNIT #1	Hull In Pipe Bacteria Unit	Sutton, Eric	Hull - In Pipe Bacteria Units
6/16/2022 13:55	Bateria UNIT #10	UNIT #10	Hull In Pipe Bacteria Unit	Sutton, Eric	Hull - In Pipe Bacteria Units
6/16/2022 14:01	Bateria UNIT #11	UNIT #11	Hull In Pipe Bacteria Unit	Sutton, Eric	Hull - In Pipe Bacteria Units
6/16/2022 14:11	Bateria UNIT #12	UNIT #12	Hull In Pipe Bacteria Unit	Sutton, Eric	Hull - In Pipe Bacteria Units
6/16/2022 14:08	Bateria UNIT #13	UNIT #13	Hull In Pipe Bacteria Unit	Sutton, Eric	Hull - In Pipe Bacteria Units
6/16/2022 14:07	Bateria UNIT #14	UNIT #14	Hull In Pipe Bacteria Unit	Sutton, Eric	Hull - In Pipe Bacteria Units
6/16/2022 14:05	Bateria UNIT #15	UNIT #15	Hull In Pipe Bacteria Unit	Sutton, Eric	Hull - In Pipe Bacteria Units
6/16/2022 14:02	Bateria UNIT #16	UNIT #16	Hull In Pipe Bacteria Unit	Sutton, Eric	Hull - In Pipe Bacteria Units
6/16/2022 13:56	Bateria UNIT #17	UNIT #17	Hull In Pipe Bacteria Unit	Sutton, Eric	Hull - In Pipe Bacteria Units
6/16/2022 13:59	Bateria UNIT #18	UNIT #18	Hull In Pipe Bacteria Unit	Sutton, Eric	Hull - In Pipe Bacteria Units
6/16/2022 14:01	Bateria UNIT #19	UNIT #19	Hull In Pipe Bacteria Unit	Sutton, Eric	Hull - In Pipe Bacteria Units
6/16/2022 13:51	Bateria UNIT #2	UNIT #2	Hull In Pipe Bacteria Unit	Sutton, Eric	Hull - In Pipe Bacteria Units
6/16/2022 14:02	Bateria UNIT #20	UNIT #20	Hull In Pipe Bacteria Unit	Sutton, Eric	Hull - In Pipe Bacteria Units
6/16/2022 14:12	Bateria UNIT #23	UNIT #23	Hull In Pipe Bacteria Unit	Sutton, Eric	Hull - In Pipe Bacteria Units
6/16/2022 13:51	Bateria UNIT #24	UNIT #24	Hull In Pipe Bacteria Unit	Sutton, Eric	Hull - In Pipe Bacteria Units
6/10/2022 12:38	Bateria UNIT #3	UNIT #3	Hull In Pipe Bacteria Unit	Sutton, Eric	Hull - In Pipe Bacteria Units
6/16/2022 13:58	Bateria UNIT #3	UNIT #3	Hull In Pipe Bacteria Unit	Sutton, Eric	Hull - In Pipe Bacteria Units

Date	Asset ID	Asset Description	Asset Class	Name	Workflow Class
6/30/2022 13:31	Bateria UNIT #3	UNIT #3	Hull In Pipe Bacteria Unit	Sutton, Eric	Hull - In Pipe Bacteria Units
6/10/2022 12:37	Bateria UNIT #4	UNIT #4	Hull In Pipe Bacteria Unit	Sutton, Eric	Hull - In Pipe Bacteria Units
6/30/2022 13:30	Bateria UNIT #4	UNIT #4	Hull In Pipe Bacteria Unit	Sutton, Eric	Hull - In Pipe Bacteria Units
6/16/2022 13:53	Bateria UNIT #5	UNIT #5	Hull In Pipe Bacteria Unit	Sutton, Eric	Hull - In Pipe Bacteria Units
6/16/2022 13:52	Bateria UNIT #6	UNIT #6	Hull In Pipe Bacteria Unit	Sutton, Eric	Hull - In Pipe Bacteria Units
6/16/2022 13:53	Bateria UNIT #7	UNIT #7	Hull In Pipe Bacteria Unit	Sutton, Eric	Hull - In Pipe Bacteria Units
6/16/2022 14:14	Bateria UNIT #9	UNIT #9	Hull In Pipe Bacteria Unit	Sutton, Eric	Hull - In Pipe Bacteria Units
6/29/2022 15:01	MH-20160	SEMS_Asset	Sanitary Manhole	Sutton, Eric	Sewer Main Cleaning & CCTV
6/29/2022 15:06	MH-20160	SEMS_Asset	Sanitary Manhole	Sutton, Eric	Generic WO
6/17/2022 14:27	MH-20174	SEMS_Asset	Sanitary Manhole	Sutton, Eric	Generic WO
6/17/2022 14:17	MH-20198	SEMS_Asset	Sanitary Manhole	Sutton, Eric	MH Frame & Cover Inspection
6/21/2022 13:08	MH-20212	SEMS_Asset	Sanitary Manhole	Sutton, Eric	MH Frame & Cover Inspection
6/17/2022 15:07	MH-20238	SEMS_Asset	Sanitary Manhole	Sutton, Eric	Generic WO
6/17/2022 14:35	MH-20266	SEMS_Asset	Sanitary Manhole	Sutton, Eric	Generic WO
6/17/2022 14:56	MH-20304	SEMS_Asset	Sanitary Manhole	Sutton, Eric	Generic WO
6/14/2022 12:35	MH-20371	SEMS_Asset	Sanitary Manhole	Sutton, Eric	MH Frame & Cover Inspection
6/9/2022 12:10	MH-20490	SEMS_Asset	Sanitary Manhole	Sutton, Eric	MH Frame & Cover Inspection
6/21/2022 11:21	MH-20490	SEMS_Asset	Sanitary Manhole	Sutton, Eric	MH Frame & Cover Inspection

Asset Management Accounts - Year 8							
	FOR M.O.R. JUNE 2022	Actual to date			Projected for Final Estimate		
Account		Budgeted Amount	Spent to Date	Delta	Projected costs and incl PO's	Final est	Delta
08M-101A	Preventive Maint	\$227,514.68	\$22,200.46	\$205,314.22	\$108,100.00	\$130,300.46	\$97,214.22
08M-102B	Capital and Major Repairs	\$140,000.00	\$43,894.09	\$96,105.91	\$160,500.00	\$204,394.09	(\$64,394.09)
08M-103A	Major Sub Contractors	\$192,737.48	\$68,107.79	\$124,629.69	\$110,000.00	\$178,107.79	\$14,629.69
blank							
	Asset Management	\$560,252.16	\$134,202.34	\$426,049.82	\$378,600.00	\$512,802.34	\$47,449.82

\$426,049.82

Budget expended	Time Status	
	NOW=	7/27/2022
	Start	5/1/2020
9.8%	224.0%	214.2%
31.4%	224.0%	192.6%
35.3%	224.0%	188.7%
24.0%	224.0%	200.0%

08S	D Street	\$7,500.00	\$0.00	\$7,500.00	\$0.00	\$0.00	\$7,500.00
-----	----------	------------	--------	------------	--------	--------	------------

0.0%	224.0%	224.0%
------	--------	--------

08C	Odor Control Chemicals	\$100,000.00	\$30,831.65	\$69,168.35	\$0.00	\$30,831.65	\$69,168.35
-----	------------------------	--------------	-------------	-------------	--------	-------------	-------------

30.8%	224.0%	193.2%
-------	--------	--------

Estimated total
remaining 08M,
08C \$116,618.17

Hull 2022-2023 - 08M Projects, Tasks, and Needs - (AV)								
Maintenance Account - Year 8 - 05_01_22 to 04_30_23								
FOR JUNE 2022 M.O.R.					\$378,600.00			7/27/2022 14:21
Priority [1=high]	Description	Status	completed	Task	Estimates & funds remaining	Final Completed Cost	Lead	Comments
1	Mechanical Work Labor by O&M specialists	Pending		101A	\$25,000.00			Placeholder for Jody St. George, Paul Horigan & WC Support Staff - Total budget \$25,000;
1	Pump and Motor Repairs [invoiced and pcard]	On Going		101A	\$20,000.00			to keep existing equipment running - utilize various outside contractor repair shops, new purchases. orig budget \$20,000;
1	Lubricants	Pending		101A	\$2,000.00			Various Suppliers for oil and grease. Budgeted \$2000.
1	Generator Prev. Maintenance and Repairs	Pending		101A	\$20,000.00			General PM and CM Repair Work - Placeholder - New PO to be issued
1	Fire Alarm Inspections and Service	Pending		101A	\$3,000.00			Semi Annual - Hart Security [October & April , central station, & Service]budget \$3000. Semi-annual services completed in mid April.
2	Universal waste disposal	Pending		101A	\$500.00			Placeholder - \$500
1	Service the Forklift	Pending		101A		\$231.00		Placeholder \$400 - Annual cost - outside vendor. Completed June 2022
1	Overhead Hoist Inspection & repairs	On Going		101A	\$1,500.00			Annual task - Applied Dynamics - Inspection Work - May 2022 \$1500 plus some corrective actions, \$1500 left to do for repairs
1	Flow meter verification and calibration	Pending		101A	\$1,200.00			Placeholder - Annual - Ray Ferland or other 1 visit annually - Targeting June 2022
1	Facility Building - Roof Inspection	completed		101A		\$2,800.00		\$2800 Annual Placeholder - Established contract with Tecta America. Completed May 2022
1		Pending		101A				
2	Jerome H2S Meter Inspection	Pending		101A	\$1,100.00			Placeholder if meter is sent out for calibration - \$1,100
1	Janitorial Supplies	On Going		101A	\$3,000.00			Estimated annual expenditures
1	Manhole Inspections	Pending		101A				As required,and/or scheduled
2	General mechanical and electrical items/supplies	On Going		101A	\$20,000.00			Grainger, FWWebb, EJP,Hoadley, McMasterCarr, etc; orig budget \$20,000, adjust tdown as year progresses
1	Thompson Pump repairs 6TS-244 [6A]	On Going		102B	\$7,000.00			Rotating assembly failure - bearings, shft, mech seal parts & labor. Est labor \$6500. Seacoast repair.
2	Hoses	Pending		101A	\$3,000.00			Replacements and/or Service - On-Going - As Needed;
1		Pending		101A				
2	Misc. Materials	Pending		101A	\$2,400.00			Hardware Store - \$200.00 per month - reoccurring expense; budget \$2,400;

Hull 2022-2023 - 08M Projects, Tasks, and Needs - (AV)								
Maintenance Account - Year 8 - 05_01_22 to 04_30_23								
FOR JUNE 2022 M.O.R.					\$378,600.00			7/27/2022 14:21
Priority [1=high]	Description	Status	completed	Task	Estimates & funds remaining	Final Completed Cost	Lead	Comments
	New Hach Spec Meter for chlorine	completed		101A				replace older/failing unit [DR700]; new unit purchased May 2022
1	Lab Equip Calibration	completed		101A				Annual service \$640
1	RAS pumps - spare impeller	On Going		101A	\$3,000.00			4-6 week lead time ARO. Ordered July 2022;
2	6" plug valves [4]	On Going		102B	\$3,600.00			replace GT1 outlet, RAS pump #3 discharge & other. Pratt plug valves -Qty 4. ordered May 2022
	New Magnetic flow meters for RAS and WAS	Pending		102B	\$8,500.00			hardware - does not include installation
2	yard hydrants - installation	Pending		102B	\$6,000.00			sub-contractor labor - pending; Have materials on hand. Spring 2022
1	Mech seals for new PS4 pumps & barrier tanks	On Going		102B	\$9,200.00			Items ordered after approval.
1	Pump Station #4 -New Pumps install	completed		102B	\$13,500.00			by D & C. Late June 2022 - revised estimated installation cost. Work completed July 2022.
1	Effluent Pump #3 - repairs	completed		102B				pump has been returned to facility
1	Sanitaire hardware purchase for aer tk 1	Pending		102B				Purchase more hardware ??
3	D&C plant water and potable water system repairs, upgrades various. Replace 6" potable water valve in basement and misc. valves	completed		102B				Also check/replace 1 1/4 valves as needed - Requires a water shutdown, other drainage piping, etc. T&M. Estimate \$43,000
2	new effluent P3 - Flowserve	On Going		102B				Update 2/8 to AquaSolutions - purchase of new effluent pump #3 - 60HP pump poss 08M ?
1	Pump Station #3 - spare rotating, assy, or pump	Pending		102B				TBD- estimates being obtained
3	New 4-inch valves for pri building between the tanks Installation	Pending		102B				Valves - cost: \$3000, sub-contracted labor - either WC or outside co.\$5,000 - totl estim \$8,000
3	Odor log data loggers & calibr kit	Pending		102B				Current units obsolete and not supported by company, possibly look at under 05C if funds avail; remove the \$6,000 on 2/6/20 - 06C or 06M
3	Jerome meter replacement	Pending		102B				replace unit, if done \$11,000
3	Gravity Thickener #1 sandblasting/painting	Pending		102B				Estimate \$50,000+ - would need to go out for competitive bid request
2	Duperon Sumitomo Gear boxes	On Going		102B	\$8,500.00			one spare gear box for flex rake and wash compactor [Delte Elec] ordered June 2022

Hull 2022-2023 - 08M Projects, Tasks, and Needs - (AV)								
Maintenance Account - Year 8 - 05_01_22 to 04_30_23								
FOR JUNE 2022 M.O.R.					\$378,600.00			7/27/2022 14:21
Priority [1=high]	Description	Status	completed	Task	Estimates & funds remaining	Final Completed Cost	Lead	Comments
1	Grit classifier system parts	On Going		102B				waiting for wear shoes - charge is to 07M - estim \$3500. Items received July 2022
	Plant Water System [Pump and/or parts]	On Going		102B	\$6,000.00			consider spare motor or complete unit
2	Replacement Pumps LS A	On Going		102B	\$8,200.00			Repair of rotating assembly - at IPS shop
1	Electrical Work	On Going		103A	\$25,000.00			Electricians: Glen Fellows, HiVoltage, or other
1	SCADA Work	On Going		103A	\$15,000.00			Steve Rose and the SCADA Support Team; budget \$20,000;
1	E-One Repairs and Replacement	On Going		103A	\$38,000.00			Based on historica/recent costs. E1 repairs where cost-effective & new replacement pumps; control panels, other equip;
1		Pending		103A				
1	Automatic Transfer Switch inspection and servicing	completed		101A	\$2,400.00			\$2400 - Annual Service planned for NETS - Transfer Switch; Work comleted July 2022
1	Wetwell Inspections and Cleaning - Plant/Pump Stations	On Going		103A	\$8,000.00			As required, plant or pump stations; orig budget \$8,000;
1	Sewer Line Cleaning - Emergencies, pump & haul	On Going		103A	\$15,000.00			Placeholder - As required for various sub-contractors; could be Hoadley, Truax, WindRiver, BMC, or other, collection system & plant; budget \$10,000
1	Collection System and plant - emerg & unplanned calls - Jetting & CCTV work - various contractors	On Going		103A	\$9,000.00			Budget - 15,000, reduce budget due to recent work
1		Pending		103A				
3	Pump Station #5 jet lines to wetwell and WW cleaning	Pending		103A				included with wetwell/collection system work
3	SHT1 - demo of equip, air piping & diffuser install/materials	Pending		103A				demo concrete in tank - \$15,000 - sub-contractor and installation of new equip -additional new equip \$6,000; air piping to the tank \$10,000; Total estimate: \$31,000. Maybe year 8M project ?
4	Generators - Load Bank Testing Plant & Pump Stations	Pending		103A				Look at under 08M or 09M - recently done under 06M.
1		Pending		103A				
1	EESCO MCC work at the Pump Stations	Pending		103A				TBD 2 days - request for quotation
1	Low pressure sewer valve box insp & mtce	Pending		103A				placeholder for contractor O&M inspections and potential repairs; Looking at Rosano-Davis or another contractor & W&C to investigate; budget of \$7,500 on hold
	Est grit screw installation	Pending		102B	\$40,000.00			placeholder installation

Hull 2022-2023 - 08M Projects, Tasks, and Needs - (AV)								
Maintenance Account - Year 8 - 05_01_22 to 04_30_23								
FOR JUNE 2022 M.O.R.					\$378,600.00			7/27/2022 14:21
Priority [1=high]	Description	Status	completed	Task	Estimates & funds remaining	Final Completed Cost	Lead	Comments
1	Est Grit screw purchase	Pending		102B	\$50,000.00			placeholder hardware purchase
TOTAL					\$378,600.00			