

woodardcurran.com

COMMITMENT & INTEGRITY DRIVE RESULTS

HULL WATER POLLUTION CONTROL FACILITY

July
2022

MONTHLY OPERATING REPORT



NPDES NO. MA0101231

Table of Contents

1	Executive Summary	3
2	Flows and Loadings.....	4
a.	Average effluent monthly flows – 2+ year comparison	5
b.	Two Month Summary of Rainfall and the Influence on Effluent Flows	6
3	Compliance	7
4	Key Performance Indicators	11
5	Odor Control	14
6	Maintenance Summary	17
a.	Tasks Completed this Month	18
b.	Asset Management Accounts	19
6	Safety.....	20
7	Staff Development.....	21
8	Collection System	22
a.	Wet Well Cleaning	22
b.	Collection System Maintenance	22
9	Project Management & Administration.....	24
a.	On-Going Projects and Support Items	24

1 EXECUTIVE SUMMARY

This Monthly Operating Report provides a summary of the pertinent information and activities that occurred at Hull WPCF during the month of July 2022.

- No lost-time incidents for the month of July
- Continuing Covid-19 awareness- adhering to W&C, Town of Hull, and CDC guidelines and sharing any updates.
- There were 150 effluent samples taken in the month of July- details on page (12). All effluent samples collected were compliant, while process conditions were stable.
- There were no Sanitary System Overflows [SSO] reported.
- The plant and collection system odors were low, but higher H₂S levels seen, due to very low flows, higher loading, and elevated sewage temperatures. More Bioxide feed was needed. Ongoing remote monitoring with the Vapor-Link for the H₂S levels.
- The Asset Management Accounts summaries for contract year #8 is attached. Latest revision date: 8/30/22.
- There were 3 E-One grinder pump calls in July - 97 N Truro (17th), 120 N Truro (20th), and 36 `
- W&C's O&M continued its efforts to support the various ongoing engineering projects at the plant- see the projects section.
- The weekly Bio Bot Covid-19 wastewater sampling & monitoring program continued with W&C staff assisting Brian Kiley of the HSD when needed.

***Mike Sullivan – Plant Manager
Town of Hull WPCF
8/31/22***

Woodard & Curran strives to deliver a high-quality operations service and is responsive to our customers concerns. Please feel free to request any modifications to the format or content of this report.

2 FLOWS AND LOADINGS



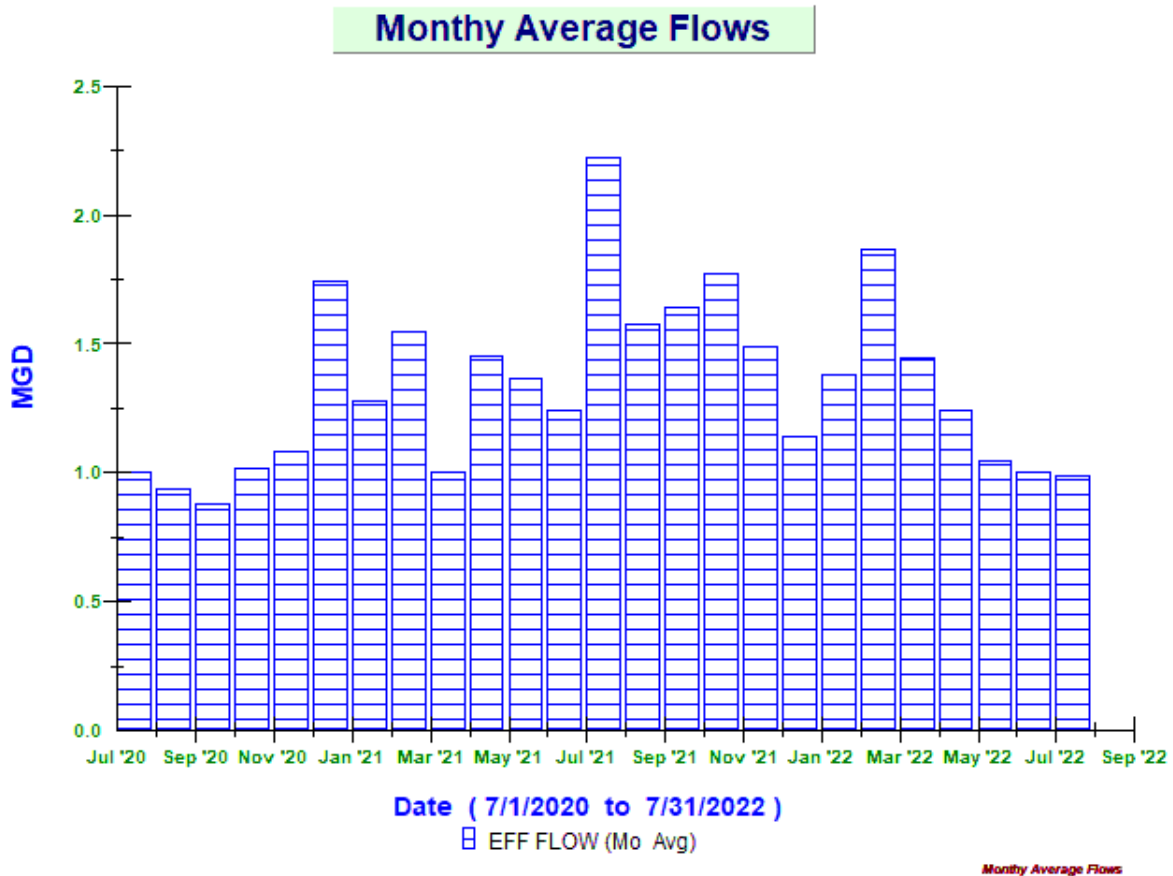
Average Daily Flows and Loadings for the Month: July

Month / Year	Eff Flow	Inf Flow	Inf BOD	Inf TSS	Eff BOD	EFF TSS
	MGD	MDG	LBS	LBS	LBS	LBS
Jul '20	1.00	1.12	1,846.27	2,257.83	80.99	184.91
Jul '21	2.22	2.20	1,555.97	3,099.06	66.86	224.58
Jul '22	0.99	1.04	1,136.53	1,805.21	42.06	107.63

* On-Going -the existing influent flow meters are strap-on doppler flow meters, and the existing pipe condition prevents getting a strong signal. An area velocity meter in the aeration tank inlet channel is used as well as the headworks influent Parshall Flume meter to monitor influent flows. All reported loadings are based on the effluent flow meter [new mag meter April 2021]. All meters are tied into the Scada system so that influent flows can be monitored.

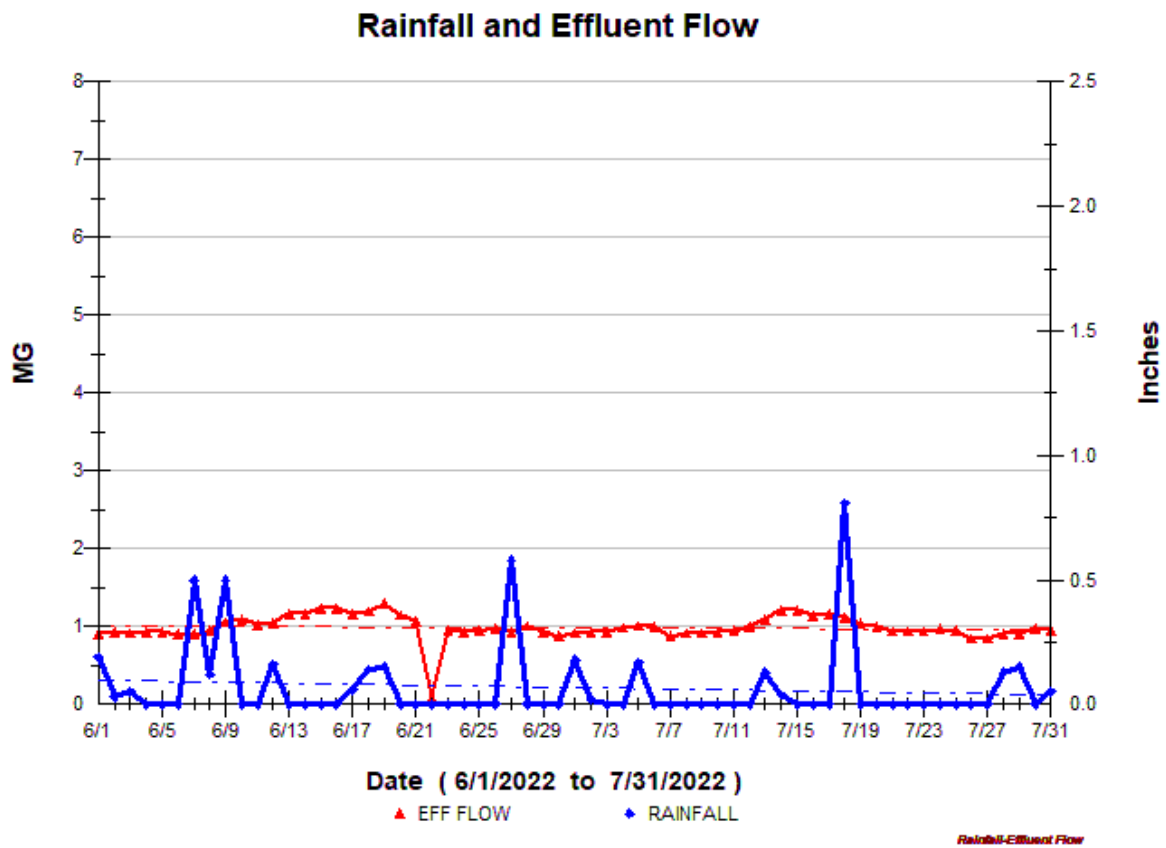
A. AVERAGE EFFLUENT MONTHLY FLOWS – 2+ YEAR COMPARISON

The monthly average flow for July was 0.99 MGD, slightly lower than June's 1.04. Total precipitation for July was 2.48 inches, higher than June's 1.68 inches, but no impact on plant flow, due to the very dry conditions. The graph shows the 2-plus year summary of the monthly average flows.



B. TWO MONTH SUMMARY OF RAINFALL AND THE INFLUENCE ON EFFLUENT FLOWS

This graph shows the days where precipitation occurred [rainfall] [Blue Peaks].



3 COMPLIANCE



➤ Plant Effluent

There were no permit exceedances in July.

- Plant process conditions were stable during the month and the process tank configuration remained unchanged.
- 7/23-25 – high ambient temperatures caused for erratic aeration system blower operation. Adjustments made to keep system operational until lower air temperatures were seen.
- A Copy of the monthly NPDES report for July 2022 was submitted to the EPA, DEP, and the Hull Sewer Dept.
- Submit DMRQA study 42 data to the ERA website



Hull Wastewater Treatment Facility

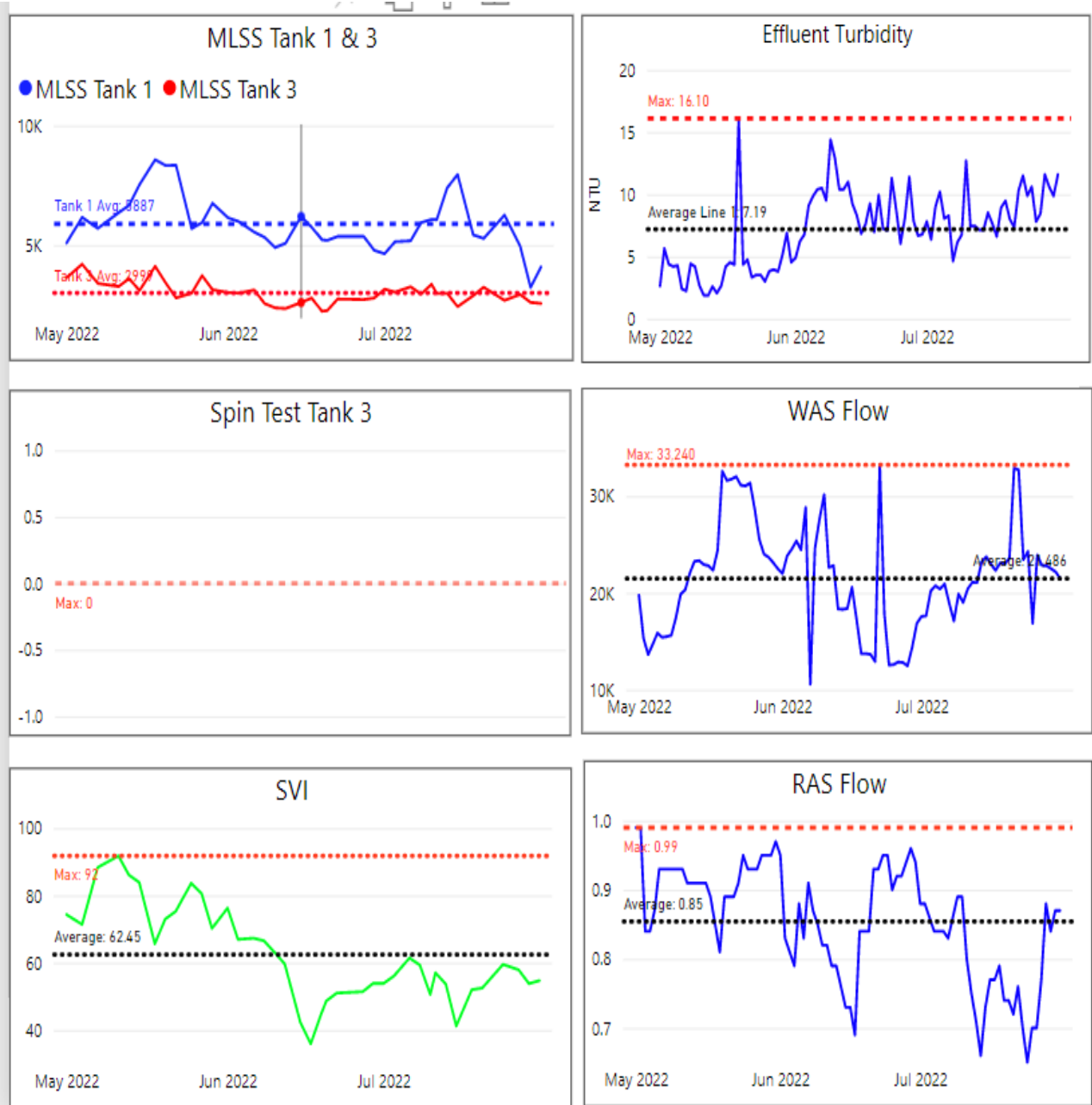
6/1/2022

7/31/2022



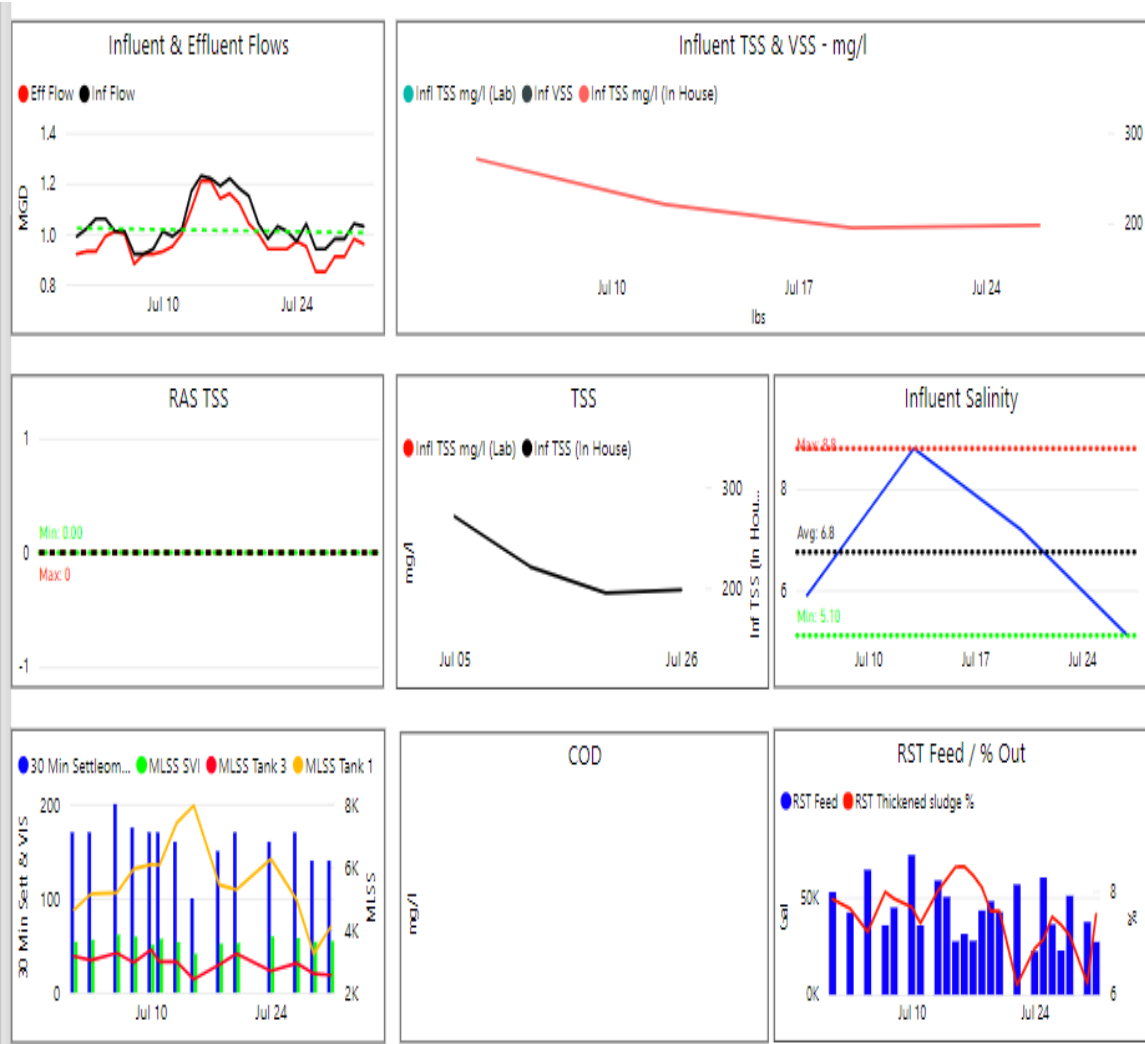
Monthly Process Summary graphs from power BI – June-July 2022.

SECONDARY PROCESSES – POWER BI GRAPHS



3-month period ending on 7/31/22. The tank solids levels under aeration were stable, as there were no significant changes in plant flows during the month.

Additional Power BI Graphs showing trends of various processes – July 2022.



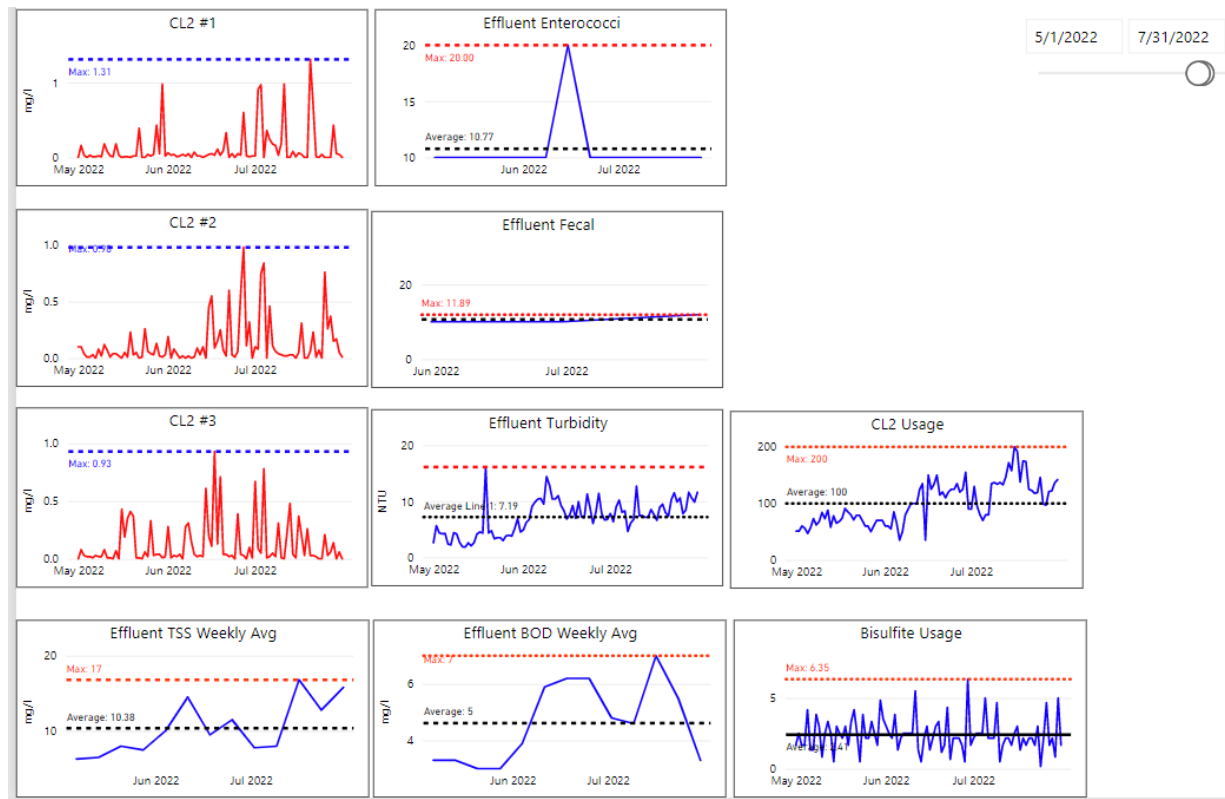
4 KEY PERFORMANCE INDICATORS



Parameter Info			Permit Requirements					Results				
Parameter	Hach WIMS Variable #	Units	Daily Max	Daily Min	Weekly Avg Max	Monthly Avg Max	Freq	Period Avg	Period Min	Period Max	# of Samples	# of Violations
Eff TSS	104 / 999081	MG/L	50		45	30	1 X Week	13.4	8.0	16.8	4	0
Eff TSS	184	LBS			1152	768	1 X Week	107.6	67.4	140.1	4	0
% TSS Rem	208	%		85			1 X Month	94.0			1	0
Eff BOD	108	MG/L	50		45	30	1 X Week	5.1	3.3	7.0	4	0
Eff BOD	185	LBS			1152	768	1 X Week	42.1	23.4	58.4	4	0
% BOD Rem	207	%		85			1 X Month	96.4			1	0
Eff Chlorine	142	MG/L	1			0.7	3 X Day	0.17	0.00	0.59	93	0
Eff Fecal	111	#/100 ML	260			88	1 X Week	12.5	10.0	20.0	4	0
Eff pH	136	SU	8.5	6.5			1X Daily	6.8	6.5	7.5	31	0
Enterococci	255	#/100 ML	276			35	1 X Week	10	10	10	4	0

There were 150 effluent samples taken in July 2022

EFFLUENT COMPLIANCE POWER BI GRAPHS

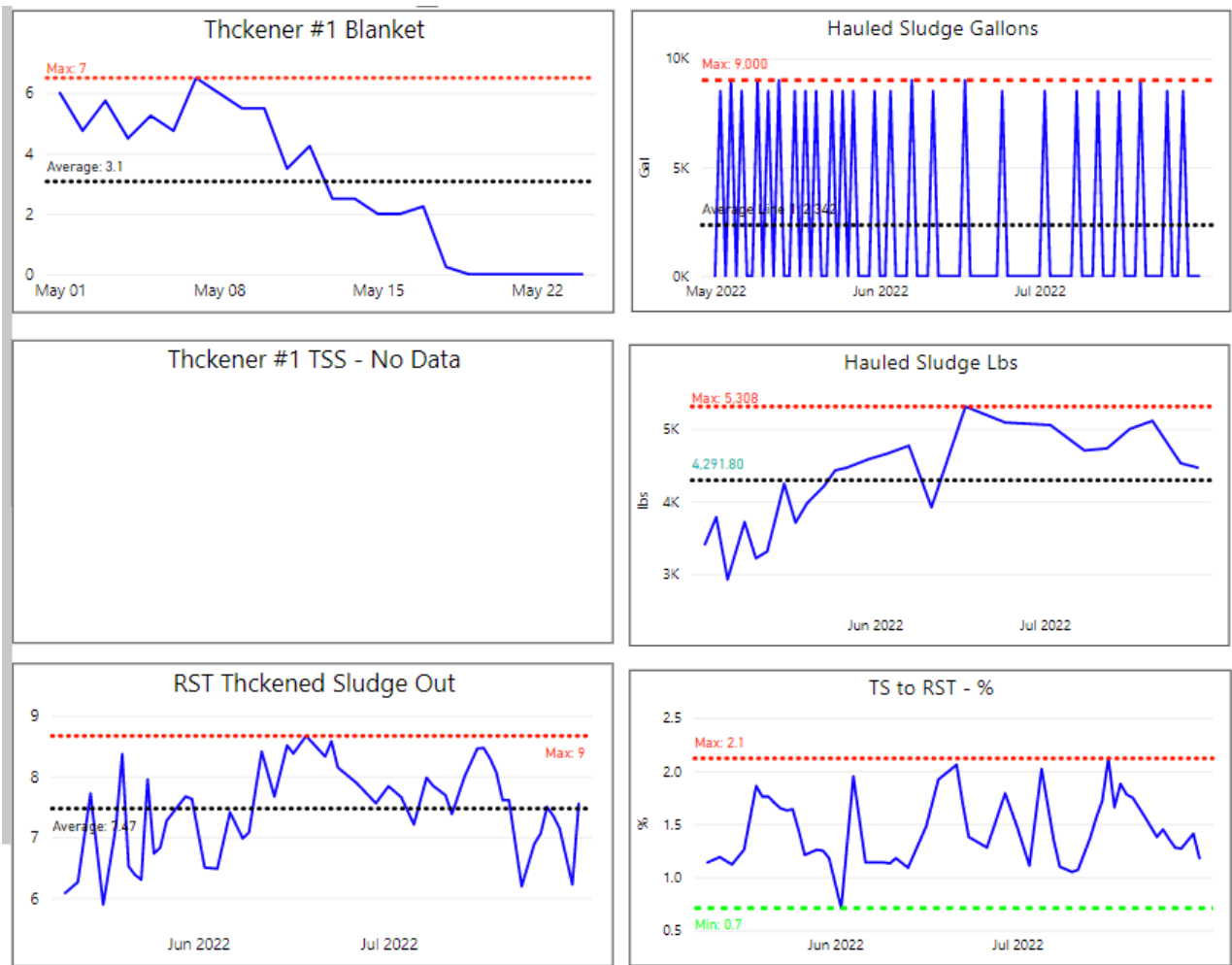


Last 3-month period ending on 7/31/22 - chlorine residuals, effluent compliance, & chemical use. Bleach [sodium hypochlorite] use 40-50% higher, while sodium bisulfite unchanged. Turbidity [clarity] of the effluent was satisfactory but trending higher. Effluent quality, while good was trending slightly higher.

Sewage Gallons Treated vs Sludge Disposed

Month	Effluent Treated, MG	Sludge Disposed, Gals
July 2020	28.99	97,000
July 2021	37.28	79,500
July 2022	29.98	43,500

Additional Power BI graphs for sludge solids for 3-month period ending 7/31/22. The gravity thickener is still offline.

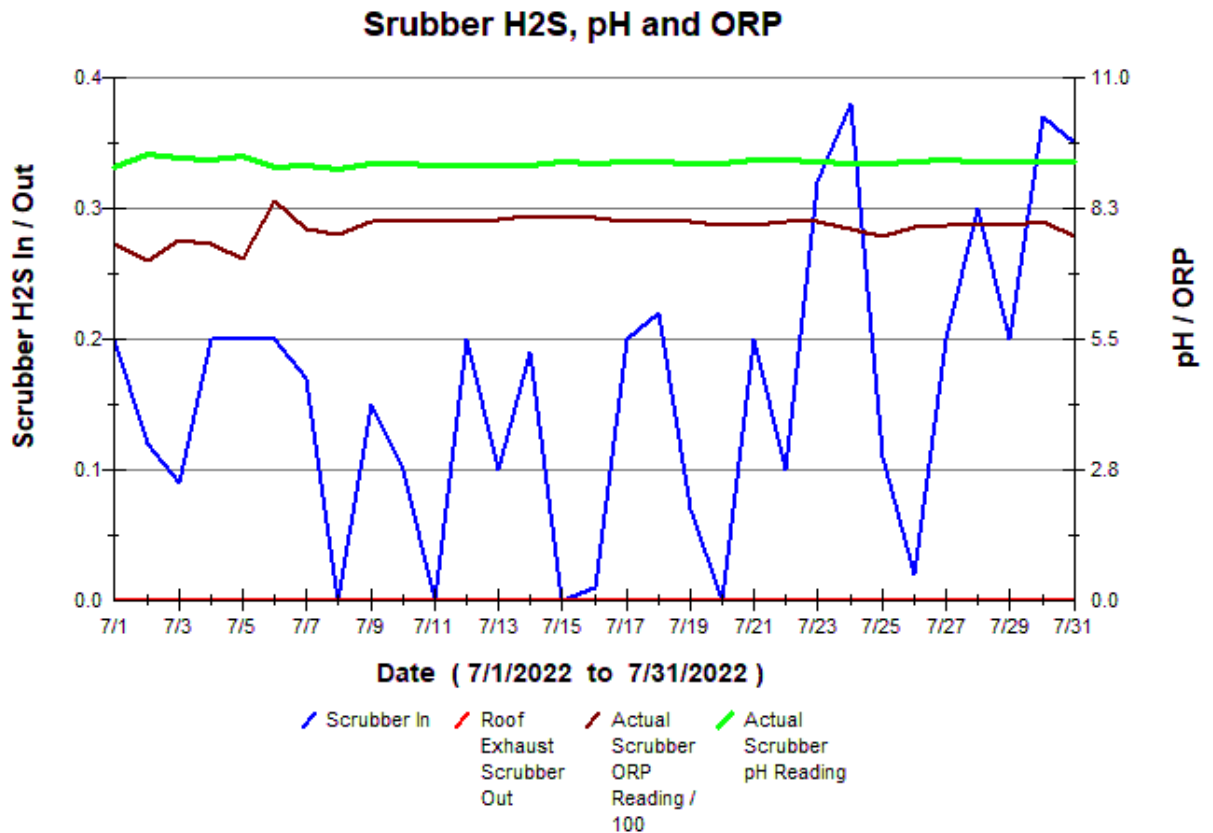


5 ODOR CONTROL

There were no odor complaint calls received during July for the wastewater plant.

The Bioxide system was on, and the feed rates were raised up to meet the higher hydrogen sulfide (H₂S) generation in the system. The changes and adjustments were made as needed according to data seen at Nantasket/Water MH and XYZ/Nantasket MH. Warming temperatures and lower flows were having a significant impact on H₂S formation in the collection system. The monthly graphs are attached below. The daily average Bioxide use for July was 99 gallons per day.

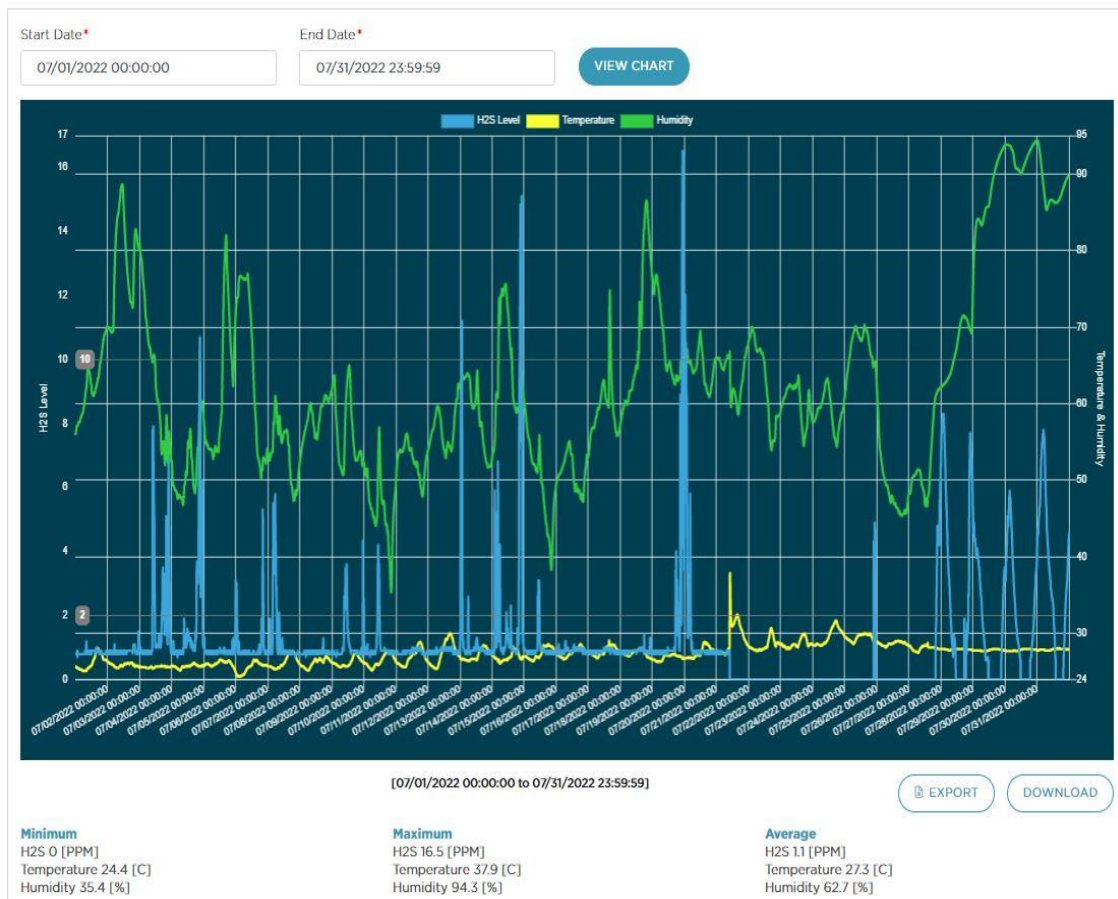
- "In-Pipe" bacteria – the 24 monthly unit changeouts were completed on 7/19 and the bi-monthly unit changeouts on 7/26.
- No changes: on pump station mixing systems/aerators.
- Slight changes - Hydrogen sulfide (H₂S) monitoring units were recording and trending on the odor scrubber. [inlet and outlet]. Increased scrubber fan speed slightly. See graph below



Scrubber H₂S, pH and ORP

[pictured below: Scrubber trend and trending graphs for H2S levels recorded from the vapor link system cellular at XYZ Street/Nantasket Ave and Nantasket Ave/Water Street manholes.

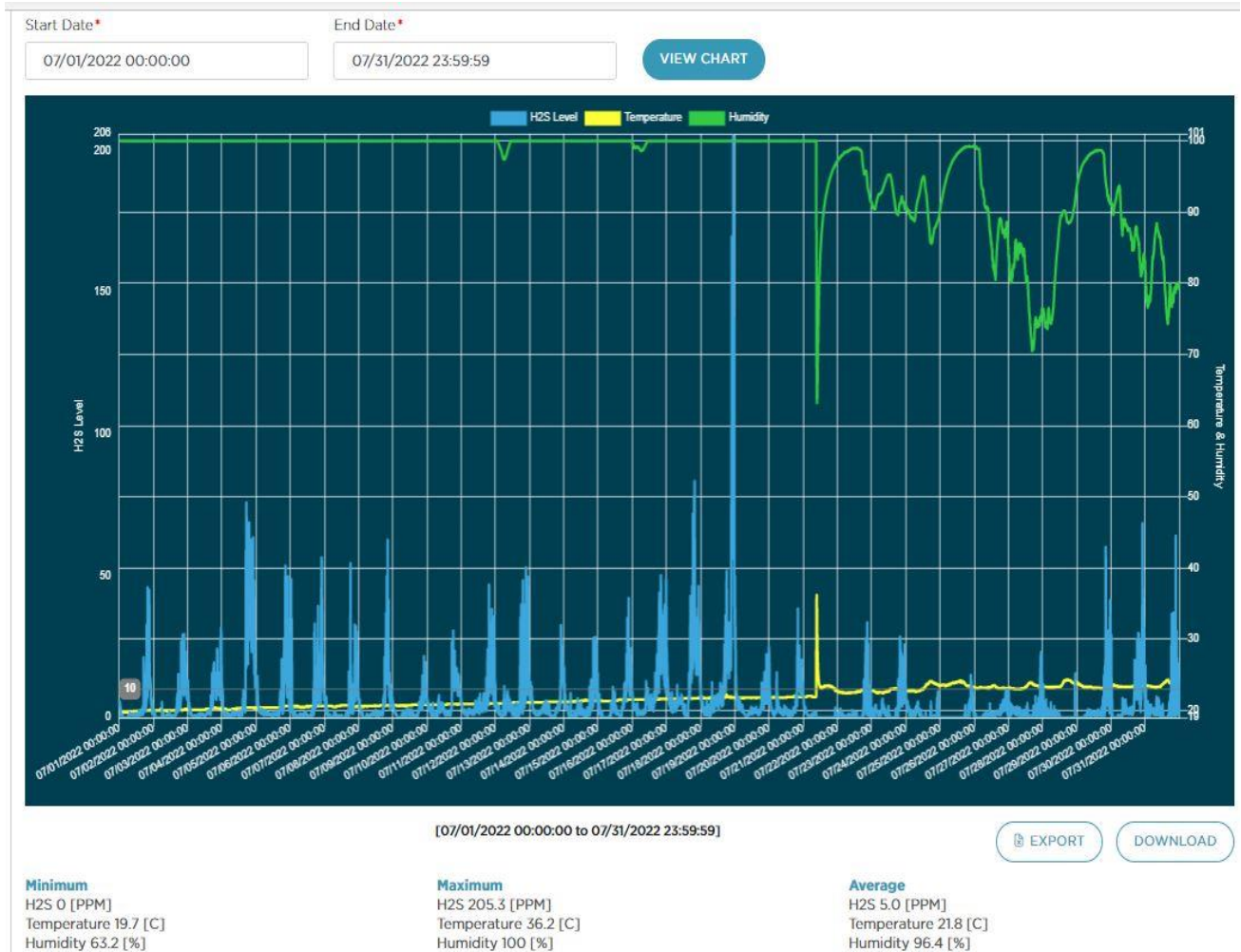
XYZ – Nantasket Ave [closest to plant]



The odor data logging unit at XYZ monitoring the overall H2S levels close to the plant.

Nantasket Ave/Water Street [at end of PS 3 force main and PS 4 discharge]

Pump station #3 - H2S is monitored at the end of the force main at the MH at Nantasket Ave & Water Street. Bioxide is added to allow excess nitrate in the sewage system to treat the additional H2S added from other parts the system – such as PS #4, contributions from lines feeding the interceptor - PS #5, PS #6, PS #9, Spinnaker Island, etc., all the way to the wastewater plant. H2S levels in July were much higher with higher peaks and overall average observed. Adjustments for more Bioxide feed were made increasingly over the course of the month.



of

6 MAINTENANCE SUMMARY

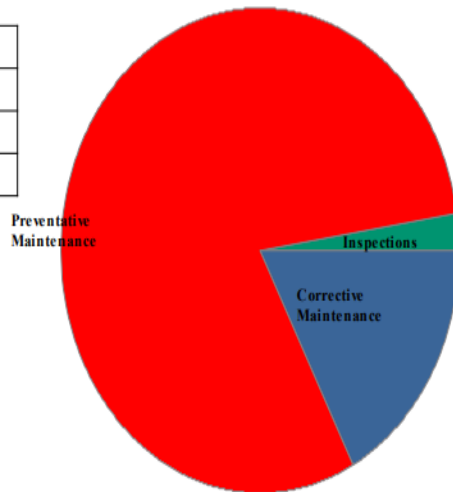


Maintenance History Report Hull Wastewater

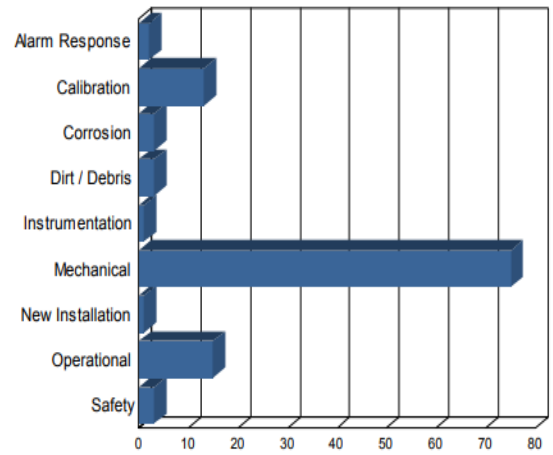
Start Date: 7/1/2022
End Date: 7/31/2022

Work Order History By Type

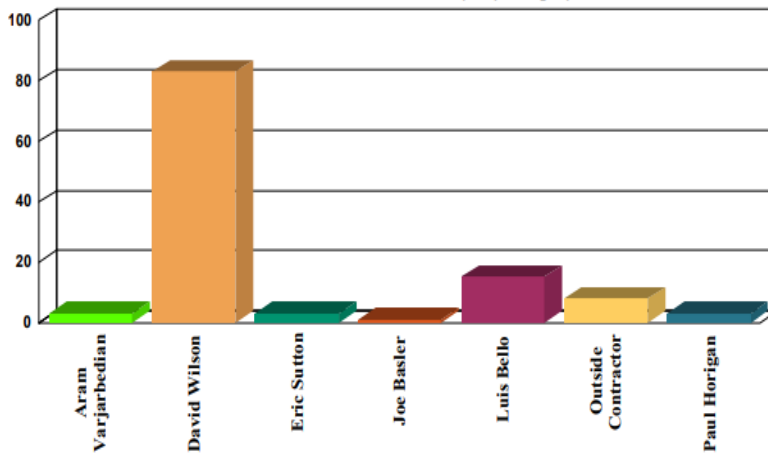
Corrective Maintenance	20
Inspections	3
Preventative Maintenance	93
Total Work Orders	116



Work Order History by Reason



Work Order History By Employee



Employee	WO Count	Labor Hours
Aram Varjarbedian	3	16
David Wilson	83	25
Eric Sutton	3	1
Joe Basler	1	1
Luis Bello	15	1
Outside Contractor	8	0
Paul Horgan	3	9
Totals	116	52

A. TASKS COMPLETED THIS MONTH

The SEMS monthly work order summary for July is attached for review.

Additional key items of note are listed below:

- Hoadley onsite 7/1 to complete repairs on the leaking fire hydrant and replaced/repared the broken valve stem located in front of the flagpole.
- Next Level Environmental in with a Jet/Vactor truck to clean out 26 manholes and jet approximately 2417 feet of sewer line on Bay Street by Pump Station 4. The cleaning was necessary following the roadway project's raising of manhole covers that left a lot of debris in the sewer pipes and manhole structures.
- Both new 3000-gallon bulk hypochlorite tanks were put online, and the existing tank level sensors recalibrated to the new tanks and checked for accuracy and the signal getting to SCADA system.
- July 11 at Pump Station 4 a D&C mechanical crew (not HVAC) replaced pump #1 and installed a new SW Range seal water reservoir system- wall mounted for use with new double cartridge mechanical seals to be used on both new pumps at PS 4. Pump #2 was replaced later 7/20. The bases for both pumps were formed out and new grouting was applied. W&C reinstalled motors and installed new suction and discharge air bleeder valves and pressure gauges.
- National Grid was onsite 7/13 to dig up a trench to lay in new gas line to supply the operations building, trenching in from Nantasket Ave in front of HSD trailer into the southeast corner of the operations building. A gas meter was put in place which will plumbed in by HVAC subcontractors when the heating/cooling system is ready.
- Hi-Voltage Elec. was called in 7/14 to repair a damaged chlorine signal line from the chlorine contact chambers (CCC) which was unmarked and accidentally dug up by National Grid the previous day. The damaged signal line was found to be dead and not in use- the working CL2 signal line was subsequently found to be running fine through another conduit pipe from the CCC into the operations building.
- Truax in on 7/14 with a Vactor/jet truck to address grease build up on Bay Street. Heading south from Dunkin' Donuts [DD] to Jake's Seafood, 12 manholes were cleaned and approximately 1500 feet of sewer line jetted. There were several calls from DD.
- A NETS technician was onsite to assess the emergency generator transfer switches at all of the pump stations and the two units at the plant. All switch tests were successful, and the generators ran under load as intended.
- CSE into the online Secondary Clarifier #1 on 7/29 to install a new steel squeegee arm and spring plate on the rotating rake arm assembly.
- Ongoing E-1 Grinder pump repairs/replacements – working with FRMahony to track repairs, order new replacement pumps, etc.
- New 4" gate valves installed in secondary building for the plant water system to replace leaking valves.
- Returned scrubber recirculation pump system to normal arrangement after replacing all PVC piping and valves, along with a new recirculation pump. There had been a pipe break and pump failure. The system was kept operational with a temporary submersible pump.

B. ASSET MANAGEMENT ACCOUNTS

- Please see the attached summary totals and planned expenditures for the Asset Management accounts for contract year (8). Most recent through **8/30/22**.
- Review year #7 – 07M, 07S, 07C costs/expenditures and preparing for contract year close statement.

6 SAFETY



It is Woodard & Curran's policy to maintain a safe and healthy work environment for every employee and to comply with all applicable occupational health & safety regulations.

- No lost time incidents reported for July
- Monthly PM's - Emergency eyewash and shower inspections, fire extinguishers, and emergency lighting inspections completed.
- Monthly calibrations were performed on all MX4 & Max XT11 gas meters.
- On-going Covid-19 Pandemic awareness with daily review and as needed. Keeping in daily contact with all contractors regarding Hull and W&C covid-19 protocols. W&C's Pure Safety topic
- The monthly W&C staff safety meeting was held on 7/25- topics discussed were current covid protocols, heat & proper hydration, back safety, and the HVAC project progress.
- Monthly safety inspection checklist completed.

7 STAFF DEVELOPMENT

Training is an important part of any operation to ensure employee health and safety is assured, quality standards are supported, staff skills are improved, career opportunities become available, and higher productivity is achieved.

Listed is a general outline of training that the staff received over the course of the month:

- All staff completed W&C's Pure Safety training and the monthly safety meeting was held on July 27. Topics discussed were heat & hydration, back safety, and reviewing the "near-miss" incidents at all the W&C projects occurring in June.
- Regular, usually daily- operational updates and process control discussions, pump station operations, Dig Safes, and the HVAC construction project work scope ongoing at the plant. Daily safety briefing and Covid-19 protocol updates if necessary.

Staffing related items:

- The project staffing plan was submitted with the monthly DMR.
- The regular staffing labor was primarily supplemented by O&M Specialist Paul Horigan, who sometimes covers the added shift left open by Aram V, and any other maintenance project needs as needed.
- Plant continued to have Saturday & Sunday staff coverage supplemented with part-time staffer Joel Terrio working Saturdays & Sundays and other weekdays as needed and he is available. This arrangement allows for the regular staff to be on site more during the week.
- Sunday licensed coverage rotation continued with Aram, Roger, Mike.
- In July one of the regular W&C staff member unfortunately tested positive for the covid virus and were unable to work for 5 days while quarantining per W&C's observed protocols.

8 COLLECTION SYSTEM

A. WET WELL CLEANING

The actual schedule for wet well cleaning: May 2022 to June 2023:

(X-Cleaned) - (Orange – Inspected) - (Green – See notes) - (blank – no work done)

Frequency of cleaning	Pump Station							
	A	1	3	4	5	6	9	D
May, 2022								
June, 2022	X			X				
July, 2022								
Aug., 2022								
Sept. 2022								
Oct., 2022								
Nov, 2022								
Dec., 2023								
Jan., 2023								
Feb., 2023								
March 2023								
April 2023								

All pump stations except for Pump Station 3 and Station D have an aerator/mixer in the wet wells.

B. COLLECTION SYSTEM MAINTENANCE

Collection system work is being documented and tracked in Utility Cloud [UC] and a summarized report for July has been included as an attachment with the Monthly Operating Report.

Woodard & Curran assisted/conducted camera work and sewer system support in the Hull collection system at the following areas during the month of July. Ongoing backup and blockage call outs requiring an increase in labor and time to support. Below summarizes W&C's efforts at the various call out locations.

- There were three calls for E-One Grinder pump service – see UC summary.
- Three sewer line blockages were reported by homeowners- on the 6th at 27 K Street, the 12th was 14 Gallup Hill Road, and on the 20th at 219 Atlantic Avenue. All 3 blockages were found to be issues within the homes and not in the Town's collection system lines. The homeowners were all advised to call a plumber.

- In-Pipe units – ongoing maintenance of the dosing units as needed. Staff also conducting board troubleshooting, dosing pump repairs, and replacement parts as needed.
- Pump station emergency generator runs consist of weekly no load runs and monthly loaded runs.
- All Pump station wet wells were inspected in July- monthly inspections are completed and combined with the monthly station PM's.
- Upload new/updated tie-cards to the UC as required.
- On-going Dig-Safe mark outs are completed throughout the Town of Hull as needed to assist and facilitate scheduled and emergency gas repairs, broken water mains, roadway paving projects, and other residential and town projects. All are listed in the UC summary.

9 PROJECT MANAGEMENT & ADMINISTRATION



A. ON-GOING PROJECTS AND SUPPORT ITEMS

July updates:

- Ongoing demo & construction work continued in many areas of the operations building for the HVAC project. W&C staff work closely with the contractors, moving equipment & items as needed in the working areas to allow for the renovation work to continue. W&C staff checking in with the general contractor supervisor daily and joining the monthly meeting with Tighe & Bond and all the sub-contractors.
- With the temporary sodium hypochlorite system offline in July and the two new replacement tanks are in use, working with the Town & D&C to see that remaining items for the project are completed.
- Continued to assist and support of engineering projects with review and feedback as needed.
- Coordinated with IPC Lydon [August] for above ground storage tank repair of leak in the lower cone. A steel patch will be welded to the outside. Further inspection of the interior of the tank will be needed during the winter shutdown. A temporary patch to stop the leakage was applied.



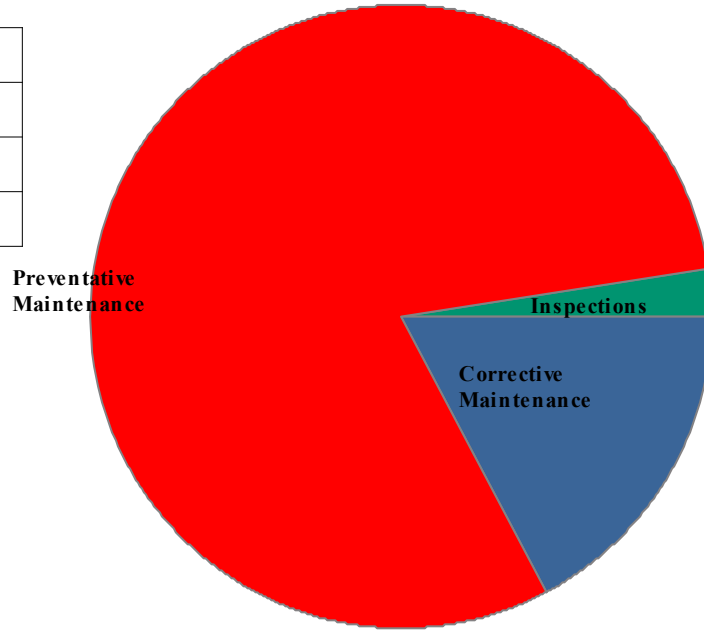
Maintenance History Report

Hull Wastewater

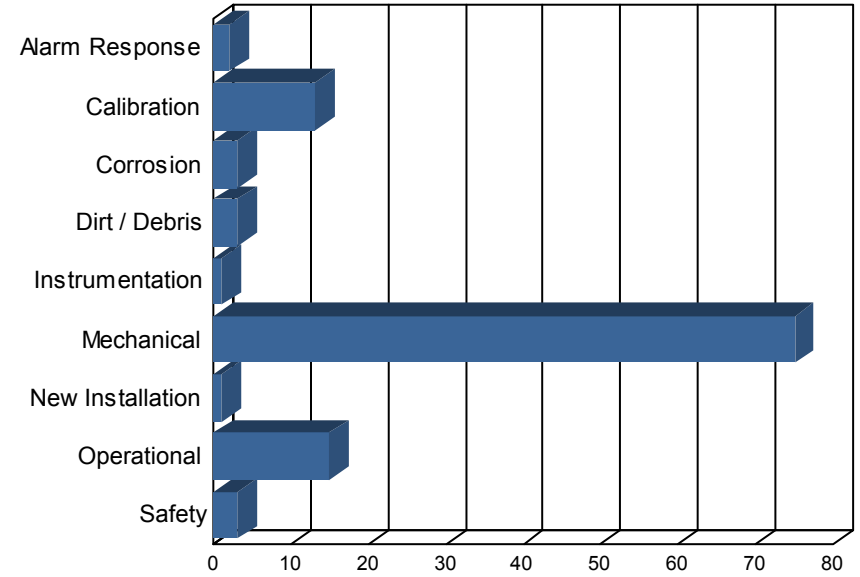
Start Date: 7/1/2022
End Date: 7/31/2022

Work Order History By Type

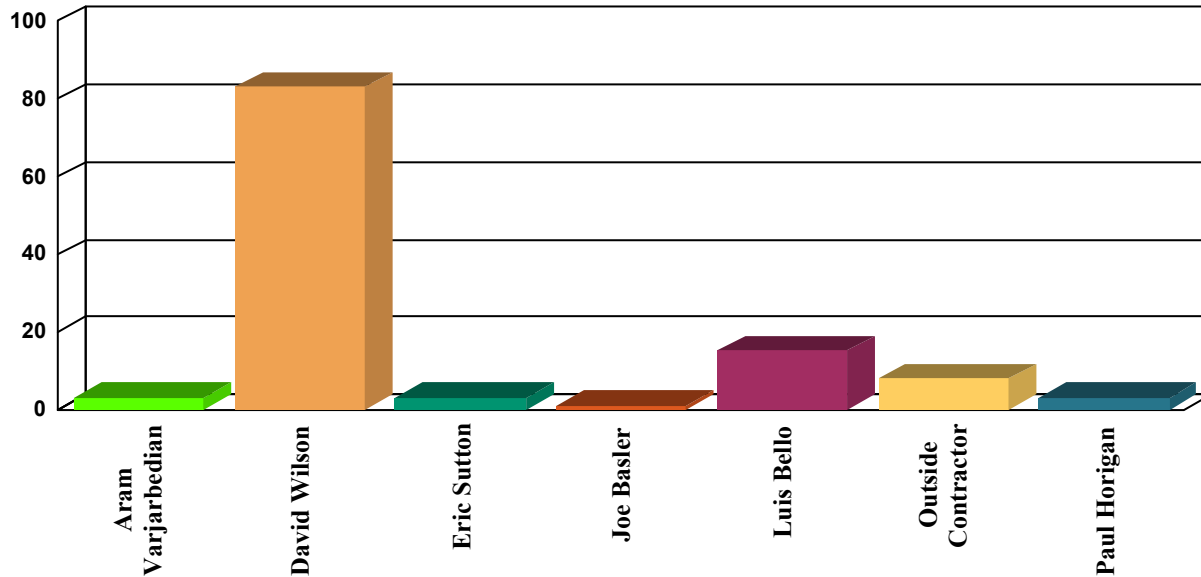
Corrective Maintenance	20
Inspections	3
Preventative Maintenance	93
Total Work Orders	116



Work Order History by Reason



Work Order History By Employee



Employee	WO Count	Labor Hours
Aram Varjarbedian	3	16
David Wilson	83	25
Eric Sutton	3	1
Joe Basler	1	1
Luis Bello	15	1
Outside Contractor	8	0
Paul Horigan	3	9
Totals	116	52

Corrective Maintenance

Status Date	WO #	Asset Name	Work Description	Work History Note	Employee	Schedule Date	Status
7/1/22	16256	Wet Scrubber Recirculation Pumps	Failed reducer on discharge line.	LOTO of equipment. Installed new plumbing, valves and pipe supports(9). Wired in new motor and verified rotation(1). Returned to service.	David Wilson	7/1/22	Completed
7/1/22	16260	RAS Pump 1	Diagnose unusual noise	Return rate down 25% LOTO of equipment. Seperated pump from volute. Nothing. Removed cover from check valve. Removed large amount of rags. Reassembled and returned to service. 0.97mgd return flow. Noise due to deadheading against check valve.	David Wilson	7/1/22	Completed
7/1/22	16258	RAS System	While cleaning out RAS pump 1 found discharge isolation valve not holding.	Tried cycling valve to clear any debris. Not able to stop flow. Needs to be replaced.	David Wilson	7/1/22	Completed
7/10/22	16261	Fixed Gas Monitoring System	oxygen sensor going to zero on occasion	Received several calls 12 mid to 3am from the sensaphone due to unacknowledged alarms coming in to scada. remote log in and check trends to see what could be done. Adj alarm setpoint. unknown cause. And currently not set up to callout on scada.	Aram Varjarbedian	7/10/22	Completed
7/11/22	16264	Eyewash Station- Portable #3 Cuastic Bulk tank	Replaced failed Environ portable eyewash station.	Assembled new Guardian Eyewash Station. Document discrepancies. Filled and charged unit. Purged air from flushing assembly. Put into service.	David Wilson	7/11/22	Completed
7/11/22	16263	Portable Diesel Pump 6B Thompson 6" 900 - 1000 gpm	Replace failed trailer jack and foot.	Moved pump to front of garage. Chocked up wheels and set front of trailer on car jack. Uninstalled failed jack. Installed new part. Drilled hole for foot hardware. Installed foot.	David Wilson	7/11/22	Completed
7/11/22	16262	PS Onan Trailer mounted generator	Replace failed sending unit.	Uninstalled failed sending unit. Installed new part and verified seal.	David Wilson	7/11/22	Completed
7/12/22	16267	38 - WW Disinfection	Containment for hypo	Install	Paul Horigan	7/13/22	Completed
7/12/22	16266	Plant Water System	sec building valve repl	Ph, AV, JT Cut old bolts out, prep for new valve installation, install valve by scum pump dischg. Use staging to perform work	Aram Varjarbedian	7/11/22	Completed
7/13/22	16268	Plant Water System	Flushing valve, secondary, scum pump .	Completed by Dave and Paul, replaced va0lve	Paul Horigan	7/13/22	Completed
7/13/22	16269	Fixed Gas Monitoring System	Diagnose headworks O2 low low alarm.	Entered space with working four gas meter. Cleaned and inspected housing and sensor. Zeroed out sensor and calibrated. Corrected false alarm.	David Wilson	7/13/22	Completed
7/13/22	16270	Influent Pump Room	Diagnose high level alarm.	Found float laying on floor. Mounting bracket corroded away. Installed new anchor and bracket.	David Wilson	7/13/22	Completed
7/14/22	16271	PS 4 Pump 1	Reinstall motor, align seal,	Reinstall motor	Paul Horigan	7/14/22	Completed
7/15/22	16272	34 - WW Secondary Treatment	De-clog RAS pump #1 of rags.	Pulled rags out from the valute.	Luis Bello	7/15/22	Completed
7/19/22	16274	Operations Building	3/4" ball valves replaced in garage for hot and cold water.	Isolated water to valves. Relived pressure and replaced failed valves. Installed 3/4" to garden hose adapters. Reassembled and returned to service.	David Wilson	7/19/22	Completed
7/26/22	16275	Generator #2 - Backup Detroit 500	Install new intake air filters	Removed old air filters. Installed new air filters. Filters makerd with installed date and generator run hours.	David Wilson	7/26/22	Completed

Corrective Maintenance

Status Date	WO #	Asset Name	Work Description	Work History Note	Employee	Schedule Date	Status
7/26/22	16276	Wet Scrubber System	No water thru roto meter low Scrubber alarm	Turned rortometer up filled tank to proper level fixed sprayer in batch tank alarm cleared	Eric Sutton	7/26/22	Completed
7/27/22	16277	RAS Pump 1	Diagnose low output	DW/JT LOTO of equipment. Seperated pump from volute. Cleaned out rag ball. Reassembled and primed. Removed cover from check valve. Cleaned debris from disc. Reassembled check valve. Returned RAS pump to service. Pump output is .95mgd at 34hZ.	David Wilson	7/27/22	Completed
7/27/22	16278	Plant Water System	no hypo to plant water system seen	AV and MS chk system out and found inj check valve clogged at feed location. Disassemble, clean and flush out.	Aram Varjarbedian	7/27/22	Completed
7/28/22	16279	Thickened Sludge Tank "above ground"	Lower cone leaking	Used shoring and 1/2" foam to seal hole in side of cone. Cut down 2x4 to locate top of shoring.	David Wilson	7/28/22	Completed

Inspections

Status Date	WO #	Asset Name	Work Description	Work History Note	Employee	Schedule Date	Status
7/22/22	15914	Blower Room Exhaust Fan 1	Monthly operational inspection	Loto of equipment. Inspected and adjusted drive belt tension. Inspected and lubed motor bearing. Inspected and lubed pillow block bearings. Inspected louvers. Returned to service. Excessive vibration. Believe due to imbalanced fan.	David Wilson	7/1/22	Completed
7/22/22	15915	Blower Room Exhaust Fan 2	Monthly operational inspection	Loto of equipment. Inspected and adjusted drive belt deflection. Inspected and lubed motor bearings. Inspected and lubed pillow block bearings. Inspected louvers. Returned to service. No unusual noises or vibration.	David Wilson	7/1/22	Completed
7/29/22	15790	Emergency Lighting & exit signs	Emergency Lighting Inspection - Monthly		David Wilson	7/13/22	Completed

Preventative Maintenance

Status Date	WO #	Asset Name	Work Description	Work History Note	Employee	Schedule Date	Status
7/6/22	15722	Ventis MX4 #2 - 4 Gas	4 Gas Meter #2 Calibration - Monthly		David Wilson	6/30/22	Completed
7/6/22	15731	GasAlert Max XTII #2	monthly calibration		David Wilson	6/30/22	Completed
7/6/22	15723	Ventis MX4 #3 - 4 Gas	4 Gas Meter #3 Calibration - Monthly		David Wilson	6/30/22	Completed
7/6/22	15724	Ventis MX4 #4 - 4 Gas	4 Gas Meter #4 Calibration - Monthly		David Wilson	6/30/22	Completed
7/6/22	15725	Ventis MX4 #5 - 4 Gas	4 Gas Meter #5 Calibration - Monthly		David Wilson	6/30/22	Completed
7/6/22	15726	Ventis MX4 #6 - 4 Gas	4 Gas Meter #6 Calibration - Monthly		David Wilson	6/30/22	Completed
7/6/22	15870	GasAlert Max XTII #1	4 gas meter calibration - monthly		David Wilson	7/1/22	Completed
7/6/22	15842	PS 1 Generator	PS #1 Generator Inspection and Load Test - Monthly		Luis Bello	7/6/22	Completed

Preventative Maintenance

Status Date	WO #	Asset Name	Work Description	Work History Note	Employee	Schedule Date	Status
7/6/22	15902	Generators "All Pump Station"	Generator - Monthly Load Test		Luis Bello	7/3/22	Completed
7/6/22	15838	PS 1 Generator	PS #1 Generator Inspection and Test - Weekly		David Wilson	7/6/22	Completed
7/6/22	15843	PS 3 Generator	PS #3 Generator Inspection and Load Test - Monthly		David Wilson	7/6/22	Completed
7/6/22	15844	PS 3 Generator	PS #3 Generator Inspection and Test - Weekly		David Wilson	7/6/22	Completed
7/6/22	15848	PS 4 Generator	PS #4 Generator Inspection and Test - Weekly		David Wilson	7/6/22	Completed
7/6/22	15852	PS 4 Generator	PS #4 Generator Inspection and Load Test - Monthly		David Wilson	7/6/22	Completed
7/6/22	15853	PS 5 Generator	PS #5 Generator Inspection and Load Test - Monthly		David Wilson	7/6/22	Completed
7/6/22	15854	PS 5 Generator	PS #5 Generator Inspection and Test - Weekly		David Wilson	7/6/22	Completed
7/6/22	15863	PS 6 Generator	PS #6 Generator Inspection and Test - Weekly		David Wilson	7/6/22	Completed
7/6/22	15867	PS 6 Generator	PS #5 Generator Inspection and Load Test - Monthly		David Wilson	7/6/22	Completed
7/6/22	15858	PS 9 Generator	PS #9 Generator Inspection and Load Test - Monthly		David Wilson	7/6/22	Completed
7/6/22	15859	PS 9 Generator	PS #9 Generator Inspection and Test - Weekly		David Wilson	7/6/22	Completed
7/6/22	15660	RST Feed Pump 1	Monthly Check Pump Couplings		David Wilson	6/1/22	Completed
7/6/22	15667	Sludge Transfer Pump 1	Monthly Check Pump Couplings		David Wilson	6/1/22	Completed
7/6/22	15874	PS Kholer Trailer Mounted Generator	Generator - Monthly Load Test		David Wilson	7/3/22	Completed
7/6/22	15799	Grit Screw Drive	Grit Screw Drive PM - Quarterly	Out of service	David Wilson	7/1/22	Completed
7/6/22	15900	pH meter	Clean and Calibrate		David Wilson	7/1/22	Completed
7/6/22	15784	Portable Generator - Honda	Portable Generator Inspection - Monthly		David Wilson	7/6/22	Completed
7/7/22	15800	Influent Sluice Isolation Gate	Weekly operate through full range		David Wilson	7/6/22	Completed
7/7/22	15825	RST Feed Pump 1	Monthly Check Pump Couplings		David Wilson	7/6/22	Completed
7/7/22	15826	RST Feed Pump 2	Monthly Check Pump Couplings		David Wilson	7/6/22	Completed
7/7/22	15829	Sludge Transfer Pump 1	Monthly Check Pump Couplings		David Wilson	7/6/22	Completed
7/7/22	15830	Sludge Transfer Pump 2	Monthly Check Pump Couplings		David Wilson	7/6/22	Completed
7/12/22	16265	PS 4 Pump 1	Install suction and discharge gauges with bleeders	Verified LOTO. Assembled pressure gauges with isolation and bleeder on suction and discharge.	David Wilson	7/12/22	Completed
7/13/22	15892	High level floats	Weekly High Float Alarm test		Luis Bello	7/3/22	Completed
7/13/22	15906	All Plant Gear box reducers	GEAR BOX MAINT - WEEKLY		Luis Bello	7/3/22	Completed
7/13/22	15903	Generators "All Pump Station"	Generator Weekly - Test Run no load		Luis Bello	7/11/22	Completed
7/13/22	15907	All Plant Gear box reducers	GEAR BOX MAINT - WEEKLY		Luis Bello	7/10/22	Completed

Preventative Maintenance

Status Date	WO #	Asset Name	Work Description	Work History Note	Employee	Schedule Date	Status
7/13/22	15893	High level floats	Weekly High Float Alarm test		Luis Bello	7/10/22	Completed
7/15/22	16273	34 - WW Secondary Treatment	Sump pump was clogged.	Cleaned the suction side of the sump pump and the area where it sits.	Joe Basler	7/15/22	Completed
7/19/22	15467	Generator #1- Emergency Kohler 750	Generator - Monthly Load Test		Outside Contractor	5/1/22	Completed
7/19/22	15636	Generator #1- Emergency Kohler 750	Generator - Monthly Load Test		David Wilson	6/5/22	Completed
7/19/22	15798	Generator #1- Emergency Kohler 750	Generator - Monthly Load Test		Outside Contractor	7/3/22	Completed
7/19/22	15791	Generator #2 - Backup Detroit 500	Generator - Monthly Load Test		David Wilson	7/3/22	Completed
7/19/22	15795	Generator #1- Emergency Kohler 750	Generator Weekly - Test Run no load		David Wilson	7/11/22	Completed
7/19/22	15792	Generator #2 - Backup Detroit 500	Generator Weekly - Test Run no load		David Wilson	7/11/22	Completed
7/19/22	15796	Generator #1- Emergency Kohler 750	Generator Weekly - Test Run no load		David Wilson	7/18/22	Completed
7/19/22	15793	Generator #2 - Backup Detroit 500	Generator Weekly - Test Run no load		David Wilson	7/18/22	Completed
7/19/22	15860	PS 9 Generator	PS #9 Generator Inspection and Test - Weekly		David Wilson	7/13/22	Completed
7/19/22	15839	PS 1 Generator	PS #1 Generator Inspection and Test - Weekly		David Wilson	7/13/22	Completed
7/19/22	15845	PS 3 Generator	PS #3 Generator Inspection and Test - Weekly		Outside Contractor	7/13/22	Completed
7/19/22	15849	PS 4 Generator	PS #4 Generator Inspection and Test - Weekly		Outside Contractor	7/13/22	Completed
7/19/22	15864	PS 6 Generator	PS #6 Generator Inspection and Test - Weekly		Outside Contractor	7/13/22	Completed
7/19/22	15855	PS 5 Generator	PS #5 Generator Inspection and Test - Weekly		Outside Contractor	7/13/22	Completed
7/19/22	15876	PS Kohler Trailer Mounted Generator	Generator Weekly - Test Run no load		Outside Contractor	7/18/22	Completed
7/19/22	15904	Generators "All Pump Station"	Generator Weekly - Test Run no load		Outside Contractor	7/18/22	Completed
7/19/22	15875	PS Kohler Trailer Mounted Generator	Generator Weekly - Test Run no load		David Wilson	7/11/22	Completed
7/19/22	15817	Aeration Tank 1 Oxygen Probe	AT #1 DO Probe Clean and Calibrate - Monthly	Cleaned and inspected DO probe. Calibration tested against sample. - .010ppm offsett	David Wilson	7/5/22	Completed
7/19/22	15818	Aeration Tank 3 Oxygen Probe	AT #3 DO Probe Clean and Calibrate - Monthly	Cleaned and calibrated DO probe. Tested calibration against sample. -.020 ppm offsett.	David Wilson	7/5/22	Completed
7/19/22	15801	Influent Sluice Isolation Gate	Weekly operate through full range		David Wilson	7/13/22	Completed
7/19/22	15822	RAS Pump 1	Monthly Check Pump Couplings		David Wilson	7/6/22	Completed
7/19/22	15823	RAS Pump 2	Monthly Check Pump Couplings		David Wilson	7/6/22	Completed
7/19/22	15824	RAS Pump 3	Monthly Check Pump Couplings		David Wilson	7/6/22	Completed

Preventative Maintenance

Status Date	WO #	Asset Name	Work Description	Work History Note	Employee	Schedule Date	Status
7/21/22	15840	PS 1 Generator	PS #1 Generator Inspection and Test - Weekly		David Wilson	7/20/22	Completed
7/21/22	15846	PS 3 Generator	PS #3 Generator Inspection and Test - Weekly		David Wilson	7/20/22	Completed
7/21/22	15850	PS 4 Generator	PS #4 Generator Inspection and Test - Weekly		David Wilson	7/20/22	Completed
7/21/22	15865	PS 6 Generator	PS #6 Generator Inspection and Test - Weekly		David Wilson	7/20/22	Completed
7/21/22	15856	PS 5 Generator	PS #5 Generator Inspection and Test - Weekly		David Wilson	7/20/22	Completed
7/21/22	15861	PS 9 Generator	PS #9 Generator Inspection and Test - Weekly		David Wilson	7/20/22	Completed
7/21/22	15908	All Plant Gear box reducers	GEAR BOX MAINT - WEEKLY		Luis Bello	7/17/22	Completed
7/21/22	15894	High level floats	Weekly High Float Alarm test		Luis Bello	7/17/22	Completed
7/21/22	15802	Influent Sluice Isolation Gate	Weekly operate through full range		Luis Bello	7/20/22	Completed
7/26/22	15821	Wet Scrubber Fan	Scrubber Exhaust Fan PM - Monthly	Lubed and inspected pillow block bearings. Inspected all mounting hardware. Inspected drive belt tension and pulley condition. Returned to service. Inspected for unusual noises or vibration. Found rubber coupling leaking. Parts on order.	David Wilson	7/13/22	Completed
7/27/22	15804	Mechanical Screen & Washpress System	Monthly Maintenance	LOTO of equipment for cleaning, lubrication and inspection. Returned to service.	David Wilson	7/4/22	Completed
7/28/22	15909	All Plant Gear box reducers	GEAR BOX MAINT - WEEKLY		Luis Bello	7/24/22	Completed
7/28/22	15895	High level floats	Weekly High Float Alarm test		Luis Bello	7/24/22	Completed
7/28/22	15797	Generator #1- Emergency Kohler 750	Generator Weekly - Test Run no load		David Wilson	7/25/22	Completed
7/28/22	15794	Generator #2 - Backup Detroit 500	Generator Weekly - Test Run no load		David Wilson	7/25/22	Completed
7/28/22	15803	Influent Sluice Isolation Gate	Weekly operate through full range		David Wilson	7/27/22	Completed
7/28/22	15841	PS 1 Generator	PS #1 Generator Inspection and Test - Weekly		David Wilson	7/27/22	Completed
7/28/22	15847	PS 3 Generator	PS #3 Generator Inspection and Test - Weekly		David Wilson	7/27/22	Completed
7/28/22	15851	PS 4 Generator	PS #4 Generator Inspection and Test - Weekly		David Wilson	7/27/22	Completed
7/28/22	15866	PS 6 Generator	PS #6 Generator Inspection and Test - Weekly		David Wilson	7/27/22	Completed
7/28/22	15857	PS 5 Generator	PS #5 Generator Inspection and Test - Weekly		David Wilson	7/27/22	Completed
7/28/22	15862	PS 9 Generator	PS #9 Generator Inspection and Test - Weekly		David Wilson	7/27/22	Completed
7/28/22	15905	Generators "All Pump Station"	Generator Weekly - Test Run no load		Luis Bello	7/25/22	Completed
7/28/22	15815	Aeration Blower 1	Aeration Blower #1 Air Filter Inspection - monthly		Eric Sutton	7/26/22	Completed
7/28/22	15877	PS Kholer Trailer Mounted Generator	Generator Weekly - Test Run no load		Luis Bello	7/25/22	Completed
7/29/22	15816	Aeration Blower 2	Aeration Blower #2 Air Filter Inspection - Monthly		Eric Sutton	7/28/22	Completed

Preventative Maintenance

Status Date	WO #	Asset Name	Work Description	Work History Note	Employee	Schedule Date	Status
7/29/22	15881	Ventis MX4 #5 - 4 Gas	4 Gas Meter #5 Calibration - Monthly		David Wilson	7/28/22	Completed
7/29/22	15880	Ventis MX4 #4 - 4 Gas	4 Gas Meter #4 Calibration - Monthly		David Wilson	7/28/22	Completed
7/29/22	15878	Ventis MX4 #2 - 4 Gas	4 Gas Meter #2 Calibration - Monthly	Failed O2 sensor	David Wilson	7/28/22	Completed
7/29/22	15882	Ventis MX4 #6 - 4 Gas	4 Gas Meter #6 Calibration - Monthly	Failed LEL sensor.	David Wilson	7/28/22	Completed
7/29/22	15879	Ventis MX4 #3 - 4 Gas	4 Gas Meter #3 Calibration - Monthly		David Wilson	7/28/22	Completed
7/29/22	15886	GasAlert Max XTII #2	monthly calibration		David Wilson	7/28/22	Completed

Date	Asset ID	Asset Description	Asset Class	Name	Workflow Class
7/12/2022 9:03	06-052	14 GALLOPS HILL RD	Hull Parcels	Sutton, Eric	Hull - Sewer Backup
7/20/2022 14:19	06-059	30 MAIN ST	Hull Parcels	Sutton, Eric	Hull - Markout
7/27/2022 14:53	06-068	107 SPRING ST	Hull Parcels	Sutton, Eric	Hull - Markout
7/20/2022 14:16	08-018	1037 NANTASKET AVE	Hull Parcels	Sutton, Eric	Hull - Markout
7/27/2022 14:56	10-047	49 HOLBROOK AVE	Hull Parcels	Sutton, Eric	Hull - Markout
7/8/2022 13:18	12-073	1 BREAKERS LN	Hull Parcels	Sutton, Eric	Hull - Markout
7/20/2022 14:06	120 N Truro St	120 N Truro St Grinder Pump	Hull Grinder Pumps	Sutton, Eric	Hull - Grinder Pump Maintenance
7/20/2022 14:15	13-091	21 R STREET	Hull Parcels	Sutton, Eric	Hull - Markout
7/27/2022 15:04	13-121	140 CADISH AVE	Hull Parcels	Sutton, Eric	Hull - Markout
7/1/2022 11:11	14-001	46 SUNSET AVE	Hull Parcels	Sutton, Eric	Hull - Markout
7/27/2022 15:00	14-062	15 K STREET	Hull Parcels	Sutton, Eric	Hull - Markout
7/27/2022 15:02	14-075	90 CADISH AVE	Hull Parcels	Sutton, Eric	Hull - Markout
7/20/2022 14:12	15-054	32 L STREET	Hull Parcels	Sutton, Eric	Hull - Markout
7/8/2022 11:03	15-064	243 BEACH AVE	Hull Parcels	Sutton, Eric	Hull - Markout
7/27/2022 14:58	15-192	48 P STREET	Hull Parcels	Sutton, Eric	Hull - Markout
7/28/2022 9:28	15-192	48 P STREET	Hull Parcels	Sutton, Eric	Hull - Markout
7/28/2022 13:33	17-055	686 NANTASKET AVE	Hull Parcels	Sutton, Eric	Hull - Markout
7/5/2022 8:50	21-056	116 MANOMET AVE	Hull Parcels	Sutton, Eric	Hull - Markout
7/5/2022 8:44	23-153	76 MANOMET AVE	Hull Parcels	Sutton, Eric	Hull - Markout
7/5/2022 9:04	23-153	76 MANOMET AVE	Hull Parcels	Sutton, Eric	Hull - Markout
7/28/2022 13:32	24-148	11 VERNON AVENUE	Hull Parcels	Sutton, Eric	Hull - Markout
7/8/2022 13:15	24-195	16 FRONT STREET	Hull Parcels	Sutton, Eric	Hull - Markout
7/5/2022 9:02	25-170	24 MALTA ST	Hull Parcels	Sutton, Eric	Hull - Markout
7/8/2022 11:01	27-102	37 SAMOSET AVE	Hull Parcels	Sutton, Eric	Hull - Markout
7/28/2022 13:27	29-020	59 EDGEWATER RD	Hull Parcels	Sutton, Eric	Hull - Markout
7/5/2022 9:07	30-048	141 NANTASKET RD	Hull Parcels	Sutton, Eric	Hull - Markout
7/28/2022 13:08	30-066	86 EDGEWATER RD	Hull Parcels	Sutton, Eric	Hull - Markout
7/5/2022 12:02	33-010	5 WATER STREET	Hull Parcels	Sutton, Eric	Generic WO
7/21/2022 11:17	34-097	247 NANTASKET AVE	Hull Parcels	Sutton, Eric	Hull - Sewer Backup
7/28/2022 13:23	35-065	21 ROOSEVELT AVE	Hull Parcels	Sutton, Eric	Hull - Markout
7/26/2022 14:56	36 Nantasket Ave	36 Nantasket Ave Grinder Pump	Hull Grinder Pumps	Sutton, Eric	Hull - Grinder Pump Maintenance
7/28/2022 13:05	36-077	86 HAMPTON CIRCLE	Hull Parcels	Sutton, Eric	Hull - Markout
7/28/2022 13:24	39-120	50 WYOLA RD	Hull Parcels	Sutton, Eric	Hull - Markout
7/25/2022 15:03	45-183	77 SALISBURY ST	Hull Parcels	Sutton, Eric	Hull - Sewer Customer Complaint
7/28/2022 13:28	47-049	158 NORTH TRURO ST	Hull Parcels	Sutton, Eric	Hull - Markout
7/28/2022 13:21	48-001	120 NANTASKET AVE	Hull Parcels	Sutton, Eric	Hull - Markout
7/8/2022 13:19	49-067	9 STATE PARK RD	Hull Parcels	Sutton, Eric	Hull - Markout
7/8/2022 13:23	49-070	1 ATLANTIC HOUSE CT	Hull Parcels	Sutton, Eric	Hull - Markout

Date	Asset ID	Asset Description	Asset Class	Name	Workflow Class
7/28/2022 13:14	50-004	37 RICHARDS RD	Hull Parcels	Sutton, Eric	Hull - Markout
7/28/2022 13:30	51-023	219 ATLANTIC AVE	Hull Parcels	Sutton, Eric	Hull - Markout
7/28/2022 13:00	52-066	14 GUN ROCK AVE	Hull Parcels	Sutton, Eric	Hull - Markout
7/28/2022 13:03	53-046	104 ATLANTIC AVE	Hull Parcels	Sutton, Eric	Hull - Markout
7/27/2022 14:55	57-055	3 BATTERY RD	Hull Parcels	Sutton, Eric	Hull - Markout
7/28/2022 13:55	Bacteria UNIT #21	UNIT #21	Hull In Pipe Bacteria Unit	Sutton, Eric	Hull - In Pipe Bacteria Units
7/28/2022 13:58	Bacteria UNIT #22	UNIT #22	Hull In Pipe Bacteria Unit	Sutton, Eric	Hull - In Pipe Bacteria Units
7/28/2022 13:45	Bateria UNIT # 8	UNIT # 8	Hull In Pipe Bacteria Unit	Sutton, Eric	Hull - In Pipe Bacteria Units
7/28/2022 13:43	Bateria UNIT #1	UNIT #1	Hull In Pipe Bacteria Unit	Sutton, Eric	Hull - In Pipe Bacteria Units
7/28/2022 13:46	Bateria UNIT #10	UNIT #10	Hull In Pipe Bacteria Unit	Sutton, Eric	Hull - In Pipe Bacteria Units
7/28/2022 13:54	Bateria UNIT #11	UNIT #11	Hull In Pipe Bacteria Unit	Sutton, Eric	Hull - In Pipe Bacteria Units
7/28/2022 13:57	Bateria UNIT #12	UNIT #12	Hull In Pipe Bacteria Unit	Sutton, Eric	Hull - In Pipe Bacteria Units
7/28/2022 13:56	Bateria UNIT #13	UNIT #13	Hull In Pipe Bacteria Unit	Sutton, Eric	Hull - In Pipe Bacteria Units
7/28/2022 13:56	Bateria UNIT #14	UNIT #14	Hull In Pipe Bacteria Unit	Sutton, Eric	Hull - In Pipe Bacteria Units
7/28/2022 13:55	Bateria UNIT #15	UNIT #15	Hull In Pipe Bacteria Unit	Sutton, Eric	Hull - In Pipe Bacteria Units
7/28/2022 13:55	Bateria UNIT #16	UNIT #16	Hull In Pipe Bacteria Unit	Sutton, Eric	Hull - In Pipe Bacteria Units
7/28/2022 13:46	Bateria UNIT #17	UNIT #17	Hull In Pipe Bacteria Unit	Sutton, Eric	Hull - In Pipe Bacteria Units
7/28/2022 13:47	Bateria UNIT #19	UNIT #19	Hull In Pipe Bacteria Unit	Sutton, Eric	Hull - In Pipe Bacteria Units
7/28/2022 13:43	Bateria UNIT #2	UNIT #2	Hull In Pipe Bacteria Unit	Sutton, Eric	Hull - In Pipe Bacteria Units
7/28/2022 13:54	Bateria UNIT #20	UNIT #20	Hull In Pipe Bacteria Unit	Sutton, Eric	Hull - In Pipe Bacteria Units
7/28/2022 13:58	Bateria UNIT #23	UNIT #23	Hull In Pipe Bacteria Unit	Sutton, Eric	Hull - In Pipe Bacteria Units
7/28/2022 13:42	Bateria UNIT #24	UNIT #24	Hull In Pipe Bacteria Unit	Sutton, Eric	Hull - In Pipe Bacteria Units
7/28/2022 13:48	Bateria UNIT #3	UNIT #3	Hull In Pipe Bacteria Unit	Sutton, Eric	Hull - In Pipe Bacteria Units
7/28/2022 13:42	Bateria UNIT #4	UNIT #4	Hull In Pipe Bacteria Unit	Sutton, Eric	Hull - In Pipe Bacteria Units
7/28/2022 13:44	Bateria UNIT #5	UNIT #5	Hull In Pipe Bacteria Unit	Sutton, Eric	Hull - In Pipe Bacteria Units
7/28/2022 13:44	Bateria UNIT #6	UNIT #6	Hull In Pipe Bacteria Unit	Sutton, Eric	Hull - In Pipe Bacteria Units
7/28/2022 13:45	Bateria UNIT #7	UNIT #7	Hull In Pipe Bacteria Unit	Sutton, Eric	Hull - In Pipe Bacteria Units
7/28/2022 13:59	Bateria UNIT #9	UNIT #9	Hull In Pipe Bacteria Unit	Sutton, Eric	Hull - In Pipe Bacteria Units
7/1/2022 12:59	HULL_MH-20201A	MH-20201A	Sanitary Manhole	Sutton, Eric	Generic WO
7/1/2022 11:15	MH-20174	SEMS_Asset	Sanitary Manhole	Sutton, Eric	Sewer Main Cleaning & CCTV
7/1/2022 11:25	MH-20174	SEMS_Asset	Sanitary Manhole	Sutton, Eric	Generic WO
7/1/2022 11:30	MH-20198	SEMS_Asset	Sanitary Manhole	Sutton, Eric	Generic WO
7/1/2022 11:35	MH-20198	SEMS_Asset	Sanitary Manhole	Sutton, Eric	Sewer Main Cleaning & CCTV
7/1/2022 12:56	MH-20201	SEMS_Asset	Sanitary Manhole	Sutton, Eric	Generic WO
7/1/2022 13:08	MH-20201	SEMS_Asset	Sanitary Manhole	Sutton, Eric	Sewer Main Cleaning & CCTV
7/1/2022 12:54	MH-20212	SEMS_Asset	Sanitary Manhole	Sutton, Eric	Generic WO
7/1/2022 13:04	MH-20212	SEMS_Asset	Sanitary Manhole	Sutton, Eric	Sewer Main Cleaning & CCTV
7/27/2022 14:49	MH-20221	SEMS_Asset	Sanitary Manhole	Sutton, Eric	MH Frame & Cover Inspection

Date	Asset ID	Asset Description	Asset Class	Name	Workflow Class
7/1/2022 11:41	MH-20236	SEMS_Asset	Sanitary Manhole	Sutton, Eric	Sewer Main Cleaning & CCTV
7/1/2022 11:47	MH-20236	SEMS_Asset	Sanitary Manhole	Sutton, Eric	Generic WO
7/1/2022 11:51	MH-20236	SEMS_Asset	Sanitary Manhole	Sutton, Eric	Sewer Main Cleaning & CCTV
7/1/2022 12:18	MH-20238	SEMS_Asset	Sanitary Manhole	Sutton, Eric	Generic WO
7/1/2022 12:24	MH-20238	SEMS_Asset	Sanitary Manhole	Sutton, Eric	Generic WO
7/1/2022 12:46	MH-20238	SEMS_Asset	Sanitary Manhole	Sutton, Eric	Generic WO
7/1/2022 12:32	MH-20239	SEMS_Asset	Sanitary Manhole	Sutton, Eric	Generic WO
7/1/2022 11:53	MH-20266	SEMS_Asset	Sanitary Manhole	Sutton, Eric	Sewer Main Cleaning & CCTV
7/1/2022 11:56	MH-20266	SEMS_Asset	Sanitary Manhole	Sutton, Eric	Generic WO
7/1/2022 12:00	MH-20304	SEMS_Asset	Sanitary Manhole	Sutton, Eric	Generic WO
7/1/2022 12:02	MH-20304	SEMS_Asset	Sanitary Manhole	Sutton, Eric	Sewer Main Cleaning & CCTV
7/1/2022 12:49	MH-20304	SEMS_Asset	Sanitary Manhole	Sutton, Eric	Generic WO
7/1/2022 14:06	MH-20490	SEMS_Asset	Sanitary Manhole	Sutton, Eric	MH Frame & Cover Inspection
7/29/2022 10:50	MH-20600	SEMS_Asset	Sanitary Manhole	Sutton, Eric	MH Frame & Cover Inspection
7/23/2022 11:45	MH-20747	SEMS_Asset	Sanitary Manhole	Sutton, Eric	Sewer Main Cleaning & CCTV
7/23/2022 11:49	MH-20747	SEMS_Asset	Sanitary Manhole	Sutton, Eric	Sewer Main Cleaning & CCTV
7/23/2022 12:10	MH-20748	SEMS_Asset	Sanitary Manhole	Sutton, Eric	Sewer Main Cleaning & CCTV
7/23/2022 12:02	MH-20749	SEMS_Asset	Sanitary Manhole	Sutton, Eric	Sewer Main Cleaning & CCTV
7/23/2022 12:06	MH-20750	SEMS_Asset	Sanitary Manhole	Sutton, Eric	Sewer Main Cleaning & CCTV
7/23/2022 11:41	MH-20752	SEMS_Asset	Sanitary Manhole	Sutton, Eric	Sewer Main Cleaning & CCTV
7/23/2022 11:53	MH-20752	SEMS_Asset	Sanitary Manhole	Sutton, Eric	Sewer Main Cleaning & CCTV
7/23/2022 11:38	MH-20754	SEMS_Asset	Sanitary Manhole	Sutton, Eric	Sewer Main Cleaning & CCTV
7/23/2022 12:16	MH-20755	SEMS_Asset	Sanitary Manhole	Sutton, Eric	Sewer Main Cleaning & CCTV
7/22/2022 14:55	MH-20761	SEMS_Asset	Sanitary Manhole	Sutton, Eric	Sewer Main Cleaning & CCTV
7/23/2022 12:24	MH-20765	SEMS_Asset	Sanitary Manhole	Sutton, Eric	Sewer Main Cleaning & CCTV
7/22/2022 14:50	MH-20770	SEMS_Asset	Sanitary Manhole	Sutton, Eric	Sewer Main Cleaning & CCTV
7/23/2022 12:33	MH-20776 ABAN	SEMS_Asset	Sanitary Manhole	Sutton, Eric	Sewer Main Cleaning & CCTV
7/22/2022 14:46	MH-20791	SEMS_Asset	Sanitary Manhole	Sutton, Eric	Sewer Main Cleaning & CCTV
7/22/2022 14:43	MH-20794	SEMS_Asset	Sanitary Manhole	Sutton, Eric	Sewer Main Cleaning & CCTV
7/23/2022 12:37	MH-20796	SEMS_Asset	Sanitary Manhole	Sutton, Eric	Sewer Main Cleaning & CCTV
7/23/2022 12:41	MH-20801	SEMS_Asset	Sanitary Manhole	Sutton, Eric	Sewer Main Cleaning & CCTV
7/22/2022 14:40	MH-20809	SEMS_Asset	Sanitary Manhole	Sutton, Eric	Sewer Main Cleaning & CCTV
7/21/2022 14:10	MH-20810	SEMS_Asset	Sanitary Manhole	Sutton, Eric	Sewer Main Cleaning & CCTV
7/21/2022 14:16	MH-20818	SEMS_Asset	Sanitary Manhole	Sutton, Eric	Sewer Main Cleaning & CCTV
7/22/2022 14:37	MH-20820	SEMS_Asset	Sanitary Manhole	Sutton, Eric	Sewer Main Cleaning & CCTV
7/21/2022 14:20	MH-20824	SEMS_Asset	Sanitary Manhole	Sutton, Eric	Sewer Main Cleaning & CCTV
7/21/2022 14:24	MH-20824	SEMS_Asset	Sanitary Manhole	Sutton, Eric	Sewer Main Cleaning & CCTV
7/22/2022 14:33	MH-20826	SEMS_Asset	Sanitary Manhole	Sutton, Eric	Sewer Main Cleaning & CCTV

Date	Asset ID	Asset Description	Asset Class	Name	Workflow Class
7/21/2022 14:47	MH-20827	SEMS_Asset	Sanitary Manhole	Sutton, Eric	Sewer Main Cleaning & CCTV
7/22/2022 14:25	MH-20827	SEMS_Asset	Sanitary Manhole	Sutton, Eric	Sewer Main Cleaning & CCTV
7/22/2022 14:29	MH-20827	SEMS_Asset	Sanitary Manhole	Sutton, Eric	Sewer Main Cleaning & CCTV
7/21/2022 14:35	MH-20828	SEMS_Asset	Sanitary Manhole	Sutton, Eric	Sewer Main Cleaning & CCTV
7/21/2022 14:39	MH-20829	SEMS_Asset	Sanitary Manhole	Sutton, Eric	Sewer Main Cleaning & CCTV
7/21/2022 14:43	MH-20830	SEMS_Asset	Sanitary Manhole	Sutton, Eric	Sewer Main Cleaning & CCTV
7/21/2022 14:50	MH-20830	SEMS_Asset	Sanitary Manhole	Sutton, Eric	Sewer Main Cleaning & CCTV
7/23/2022 12:19	MH-21020	SEMS_Asset	Sanitary Manhole	Sutton, Eric	Sewer Main Cleaning & CCTV
7/23/2022 12:29	MH-30047	SEMS_Asset	Sanitary Manhole	Sutton, Eric	Sewer Main Cleaning & CCTV

Asset Management Accounts - Year 8							
	FOR M.O.R. JULY 2022	Actual to date			Projected for Final Estimate		
Account		Budgeted Amount	Spent to Date	Delta	Projected costs and incl PO's	Final est	Delta
08M-101A	Preventive Maint	\$227,514.68	\$29,205.48	\$198,309.20	\$88,900.00	\$118,105.48	\$109,409.20
08M-102B	Capital and Major Repairs	\$140,000.00	\$81,312.15	\$58,687.85	\$136,100.00	\$217,412.15	(\$77,412.15)
08M-103A	Major Sub Contractors	\$192,737.48	\$124,583.69	\$68,153.79	\$79,000.00	\$203,583.69	(\$10,846.21)
blank							
	Asset Management	\$560,252.16	\$235,101.32	\$325,150.84	\$304,000.00	\$539,101.32	\$21,150.84

\$325,150.84

Budget expended	Time Status	
	NOW=	8/30/2022
	Start	5/1/2020
12.8%	233.4%	220.5%
58.1%	233.4%	175.3%
64.6%	233.4%	168.7%
42.0%	233.4%	191.4%

08S	D Street	\$7,500.00	\$3,484.20	\$4,015.80	\$0.00	\$3,484.20	\$4,015.80
-----	----------	------------	------------	------------	--------	------------	------------

46.5%	233.4%	186.9%
-------	--------	--------

08C	Odor Control Chemicals	\$100,000.00	\$45,421.15	\$54,578.85	\$0.00	\$45,421.15	\$54,578.85
-----	------------------------	--------------	-------------	-------------	--------	-------------	-------------

45.4%	233.4%	188.0%
-------	--------	--------

Estimated total
remaining 08M,
08C \$75,729.69

Hull 2022-2023 - 08M Projects, Tasks, and Needs - (AV)								
Maintenance Account - Year 8 - 05_01_22 to 04_30_23								
FOR JULY 2022 M.O.R.					\$304,000.00			8/30/2022 19:23
Priority [1=high]	Description	Status	completed	Task	Estimates & funds remaining	Final Completed Cost	Lead	Comments
1	Mechanical Work Labor by O&M specialists	Pending		101A	\$20,000.00			Placeholder for Jody St. George, Paul Horigan & WC Support Staff - Total budget \$25,000; adjust 8/30
1	Pump and Motor Repairs [invoiced and pcard]	On Going		101A	\$15,000.00			to keep existing equipment running - utilize various outside contractor repair shops, new purchases. orig budget \$20,000; adj 8/30;
1	Lubricants	Pending		101A	\$2,000.00			Various Suppliers for oil and grease. Budgeted \$2000.
1	Generator Prev. Maintenance and Repairs	Pending		101A	\$20,000.00			General PM and CM Repair Work - Placeholder - New PO to be issued
1	Fire Alarm Inspections and Service	On Going		101A	\$2,500.00			Semi Annual - Hart Security [October & April , central station, & Service]budget \$3000. Semi-annual services completed in mid April. Adj 8/30;
2	Universal waste disposal	Pending		101A	\$500.00			Placeholder - \$500
1	Service the Forklift	completed		101A		\$231.00		Placeholder \$400 - Annual cost - outside vendor. Completed June 2022
1	Overhead Hoist Inspection & repairs	completed		101A	\$1,500.00			Annual task - Applied Dynamics - Inspection Work - May 2022 \$1500 plus some corrective actions, \$1500 left to do for repairs [completed Aug 2022];
1	Flow meter verification and calibration	Pending		101A	\$1,200.00			Placeholder - Annual - Ray Ferland or other 1 visit annually - Targeting June 2022
1	Facility Building - Roof Inspection	completed		101A		\$2,800.00		\$2800 Annual Placeholder - Established contract with Tecta America. Completed May 2022
1		Pending		101A				
2	Jerome H2S Meter Inspection	Pending		101A	\$1,100.00			Placeholder if meter is sent out for calibration - \$1,100
1	Janitorial Supplies	On Going		101A	\$2,500.00			Orig budget \$3,000 - Estimated annual expenditures - adjust 8/30
1	Manhole Inspections	Pending		101A				As required,and/or scheduled
2	General mechanical and electrical items/supplies	On Going		101A	\$15,000.00			Grainger, FWWebb, EJP,Hoadley, McMasterCarr, etc; orig budget \$20,000, adjust tdown as year progresses; adj 8/30;
1	Thompson Pump repairs 6TS-244 [6A]	On Going		102B	\$7,000.00			Rotating assembly failure - bearings, shft, mech seal parts & labor. Est labor \$6500. Seacoast repair.
2	Hoses	Pending		101A	\$3,000.00			Replacements and/or Service - On-Going - As Needed;
1	hypo room access/entry door	Pending		102B	\$6,500.00			D&C Quoted - waiting for updated quote with FRP door
2	Misc. Materials	on Going		101A	\$1,600.00			Hardware Store - \$200.00 per month - reoccurring expense; budget \$2,400; Adjust 8/30

Hull 2022-2023 - 08M Projects, Tasks, and Needs - (AV)								
Maintenance Account - Year 8 - 05_01_22 to 04_30_23								
FOR JULY 2022 M.O.R.					\$304,000.00			8/30/2022 19:23
Priority [1=high]	Description	Status	completed	Task	Estimates & funds remaining	Final Completed Cost	Lead	Comments
	New Hach Spec Meter for chlorine	completed		101A				replace older/failing unit [DR700]; new unit purchased May 2022
1	Lab Equip Calibration	completed		101A				Annual service \$640
1	RAS pumps - spare impeller	On Going		101A	\$3,000.00			4-6 week lead time ARO. Ordered July 2022;
2	6" plug valves [4]	On Going		102B	\$3,600.00			replace GT1 outlet, RAS pump #3 discharge & other. Pratt plug valves -Qty 4. ordered May 2022; received Aug 2022
	New Magnetic flow meters for RAS and WAS	Pending		102B	\$8,500.00			hardware - does not include installation
2	yard hydrants - installation	Pending		102B	\$6,000.00			sub-contractor labor - pending; Have materials on hand. Spring 2022
1	Mech seals for new PS4 pumps & barrier tanks	completed		102B		\$10,068.55		Items ordered after approval. Installed & in service Aug 2022.
1	Pump Station #4 -New Pumps install	completed		102B		\$12,237.61		by D & C. Late June 2022 - revised estimated installation cost. Work completed July 2022.
1	Effluent Pump #3 - repairs	completed		102B		\$26,840.20		pump has been returned to facility
1	Sanitaire hardware purchase for aer tk 1	Pending		102B				Purchase more hardware ??
3	D&C plant water and potable water system repairs, upgrades various. Replace 6" potable water valve in basement and misc. valves	completed		102B		\$43,499.70		Also check/replace 1 1/4 valves as needed - Requires a water shutdown, other drainage piping, etc. T&M. Estimate \$43,000
2	new effluent P3 - Flowserve	On Going		102B				Update 2/8 to AquaSolutions - purchase of new effluent pump #3 - 60HP pump poss 08M ?
1	Pump Station #3 - spare rotating, assy, or pump	Pending		102B				TBD- estimates being obtained
3	New 4-inch valves for pri building between the tanks Installation	Pending		102B				Valves - cost: \$3000, sub-contracted labor - either WC or outside co.\$5,000 - totl estim \$8,000
3	Odor log data loggers & calibr kit	Pending		102B				Current units obsolete and not supported by company, possibly look at under 05C if funds avail; remove the \$6,000 on 2/6/20 - 06C or 06M
3	Jerome meter replacement	Pending		102B				replace unit, if done \$11,000
3	Gravity Thickener #1 sandblasting/painting	Pending		102B				Estimate \$50,000+ - would need to go out for competitive bid request
2	Duperon Sumitomo Gear boxes	On Going		102B	\$8,500.00			one spare gear box for flex rake and wash compactor [Delte Elec] ordered June 2022

Hull 2022-2023 - 08M Projects, Tasks, and Needs - (AV)								
Maintenance Account - Year 8 - 05_01_22 to 04_30_23								
FOR JULY 2022 M.O.R.					\$304,000.00			8/30/2022 19:23
Priority [1=high]	Description	Status	completed	Task	Estimates & funds remaining	Final Completed Cost	Lead	Comments
1	Grit classifier system parts	On Going		102B				waiting for wear shoes - charge is to 07M - estim \$3500. Items received July 2022
	Plant Water System [Pump and/or parts]	On Going		102B	\$6,000.00			consider spare motor or complete unit
1	Replacement Pumps LS A	completed		102B		\$9,749.96		Repair of rotating assembly - at IPS shop
1	Electrical Work	On Going		103A	\$20,000.00			Orig budget \$25,000. Electricians: Glen Fellows, HiVoltage, or other; adjust 8/30
1	SCADA Work	On Going		103A	\$15,000.00			Steve Rose and the SCADA Support Team; budget \$20,000;
1	E-One Repairs and Replacement	On Going		103A	\$17,000.00			Orig budget: \$38,000. Based on historica/recent costs. E1 repairs where cost-effective & new replacement pumps; control panels, other equip; Adjust 8/30.
1	Automatic Transfer Switch inspection and servicing	completed		101A		\$1,800.00		\$2400 - Annual Service planned for NETS - Transfer Switch; Work comleted July 2022
1	Wetwell Inspections and Cleaning - Plant/Pump Stations	On Going		103A	\$8,000.00			As required, plant or pump stations; orig budget \$8,000; adjust
1	Sewer Line Cleaning - Emergencies, pump & haul	On Going		103A	\$10,000.00			Placeholder - As required for various sub-contractors; could be Hoadley, Truax, WindRiver, BMC, or other, collection system & plant; budget \$10,000
1	Collection System and plant - emerg & unplanned calls - Jetting & CCTV work - various contractors	On Going		103A	\$9,000.00			Budget - 15,000, 8/30 - reduce budget due to recent work
1		Pending		103A				
3	Pump Station #5 jet lines to wetwell and WW cleaning	Pending		103A				included with wetwell/collection system work
3	SHT1 - demo of equip, air piping & diffuser install/materials	Pending		103A				demo concrete in tank - \$15,000 - sub-contractor and installation of new equip -additional new equip \$6,000; air piping to the tank \$10,000; Total estimate: \$31,000. Maybe year 8M project ?
4	Generators - Load Bank Testing Plant & Pump Stations	Pending		103A				Look at under 08M or 09M - recently done under 06M.
1	Rosano Davis Pump & Haul PS9	completed		103A		\$28,800.00		for FM inspection
1	EESCO MCC work at the Pump Stations	Pending		103A				TBD 2 days - request for quotation
3	Low pressure sewer valve box insp & mtce	Pending		103A				placeholder for contractoror O&M inspections and potential repairs; Looking at Rosano-Davis or another contractor & W&C to investigate; budget of \$7,500 on hold
1	Est grit screw installation	Pending		102B	\$40,000.00			placeholder installation
1	Est Grit screw purchase	Pending		102B	\$50,000.00			placeholder hardware purchase
3 of 3	8/30/2022	TOTAL			2022-2023 YTD	\$394,000.00	Checkbook_YTD.xlsx	08M Planned Costs