



1111 Nantasket Avenue
Hull, MA 02045

woodardcurran.com

HULL, MA WATER POLLUTION CONTROL FACILITY

JANUARY 2024

MONTHLY OPERATING REPORT



0217319.00

Town of Hull, MA

Permit No. MAG590037

TABLE OF CONTENTS

SECTION	PAGE NO.
EXECUTIVE SUMMARY	ES-1
1. FLOWS AND LOADING	1-1
1.1 Average Daily Flows and Loadings – January 2024	1-1
1.2 Average effluent monthly flows – 2+ year comparison.....	1-2
1.3 One Month Summary of Rainfall and the Influence on Effluent Flows	1-3
2. COMPLIANCE	2-4
2.1 Plant Effluent.....	2-4
2.2 Secondary Processes.....	2-5
2.3 Permit Compliance	2-7
2.4 Solids Handling & Odor Control.....	2-9
3. MAINTENANCE SUMMARY	3-1
3.1 Maintenance Summary	3-1
4. SAFETY	4-1
5. STAFF DEVELOPMENT	5-1
5.1 Training	5-1
5.2 Staffing Updates	5-1
6. COLLECTION SYSTEM	6-1
6.1 Wet Well Maintenance.....	6-1
6.2 Collection System Maintenance	6-2
7. PROJECT MANAGEMENT & ADMINISTRATION	7-1
7.1 Ongoing Projects and Support Items- January Updates:.....	7-1

EXECUTIVE SUMMARY

This Monthly Operating Report provides a summary of the pertinent information and activities that occurred at Hull WPCF during the month of January 2024.

- W&C had no lost-time incidents for the month of January.
- On January 2 rehabilitation work commenced on the Effluent Outfall Pipe.
- A collapsed pipe was discovered on George Washington Boulevard at Wharf Avenue which required major excavations to repair over the course of two weeks. Pump Station #3 had been recording higher than normal flows which lead HSD and W&C staff to investigate and subsequently discover the collapsed pipe.
- On January 6 the gravity sludge thickener, GT-1, was put online for the winter months in lieu of W&C staff using the RST, rotary sludge thickener. The RST will undergo some very necessary mechanical upgrades during the winter downtime.
- There were 163 effluent samples taken in January.
- There were two after-hours alarm call that required a response by W&C staff.
- The Asset Management Accounts summaries for contract year #9 is attached- the latest revision date is 12/28/2023.
- There were 2 calls from a resident for E-One grinder pump issues.
- W&C's O&M continued its efforts to support the various ongoing engineering projects and upgrades at the plant- see the projects section.
- The weekly BioBot Covid-19 wastewater sampling & monitoring program continued with W&C staff sampling the raw influent for analysis.

Woodard & Curran strives to deliver a high-quality operations service and is responsive to our customers' concerns. Please feel free to request any modifications to the format or content of this report.

Mike Sullivan – Plant Manager
Town of Hull WPCF
4/15/2024

1. FLOWS AND LOADING



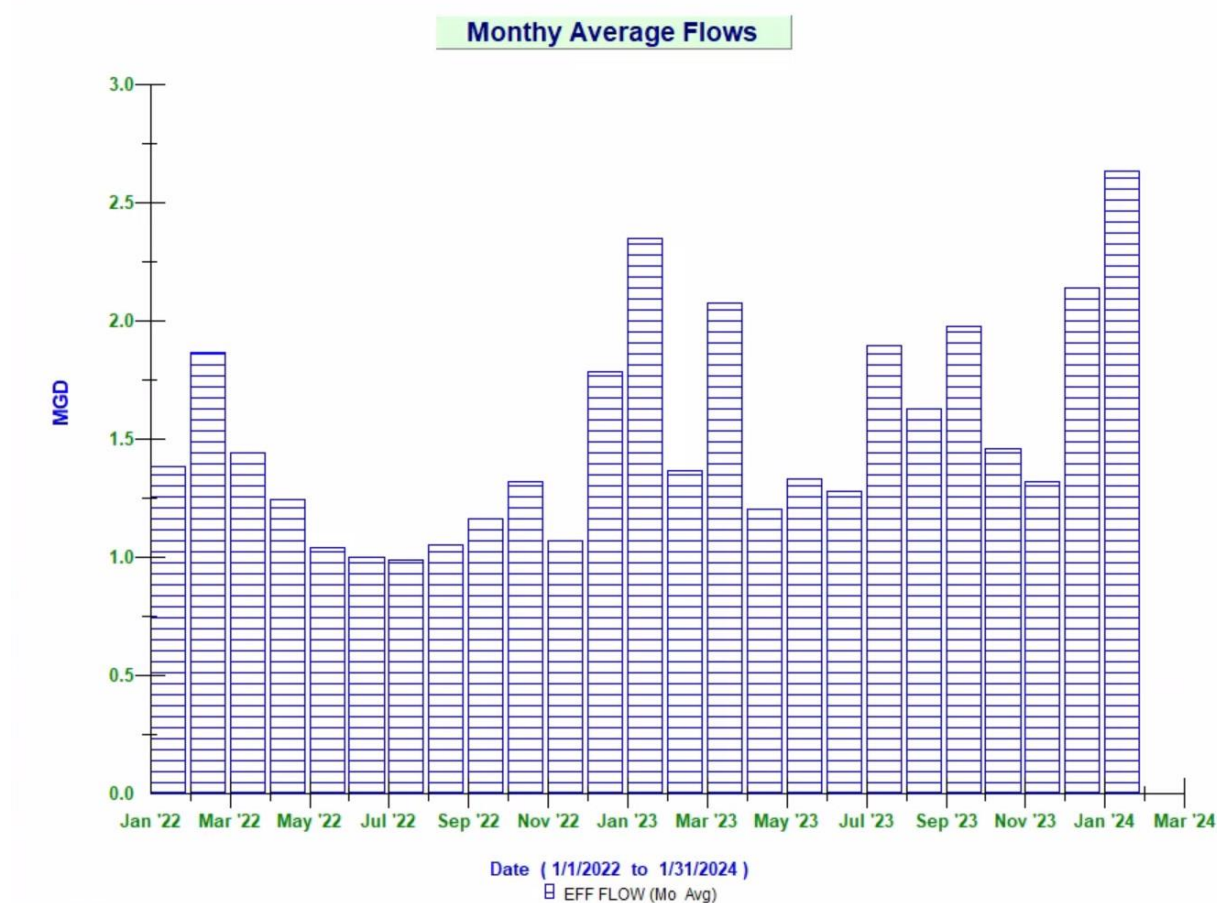
1.1 Average Daily Flows and Loadings – January 2024

Month / Year	Eff Flow	Inf Flow	Inf BOD	Inf TSS	Eff BOD	EFF TSS
	MGD	MDG	LBS	LBS	LBS	LBS
Jan '22	1.38	1.60	1,415.36	1,655.07	45.91	127.54
Jan '23	2.35	2.18	1,795.05	2,224.13	122.91	180.22
Jan '24	2.63	2.37	8,062.19	7,290.34	70.92	151.20

* On-Going -the existing influent flow meters are strap-on doppler flow meters, and the existing pipe condition prevents getting a strong signal. An area velocity meter in the aeration tank inlet channel is used as well as the headworks influent Parshall Flume meter to monitor influent flows. All reported loadings are based on the effluent flow meter [new mag meter April 2021]. All meters are tied into the SCADA system so that influent flows can be monitored.

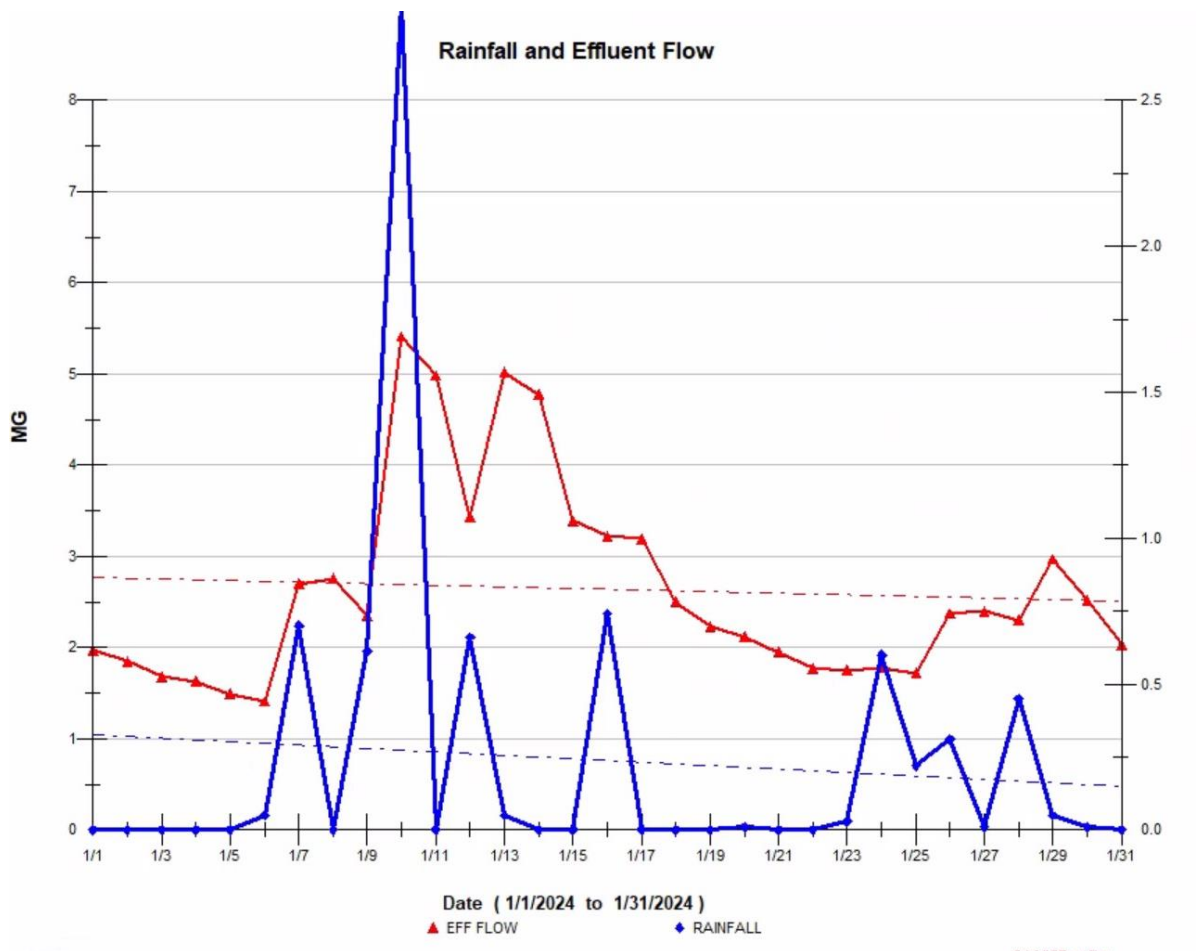
1.2 Average effluent monthly flows – 2+ year comparison

The monthly average flow for January was 2.63 MGD, a bit more than the 2.14 MGD seen in December. The total precipitation for January was 7.33 inches, well more than December's 3.52 inches, but had no impact on the plant's process conditions. The graph below shows the 2-plus year summary of the monthly average flows.



1.3 One Month Summary of Rainfall and the Influence on Effluent Flows

The graph shows the days where precipitation occurred [rainfall] [Blue Peaks].



2. COMPLIANCE

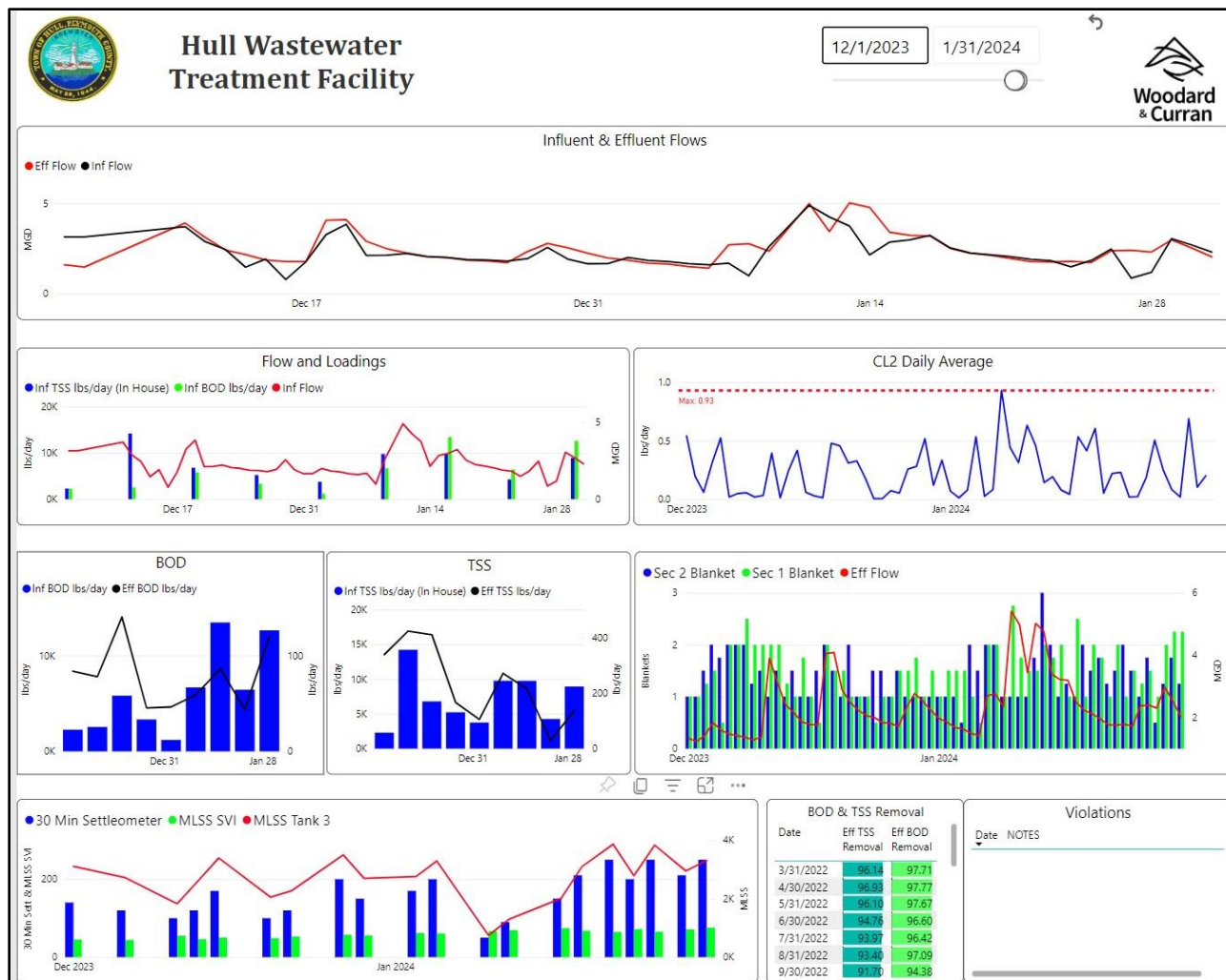
2.1 Plant Effluent

The plant process conditions through January were steady. Below are Process Summary Graphs produced on the Power BI dashboard illustrating trends year-to-date.

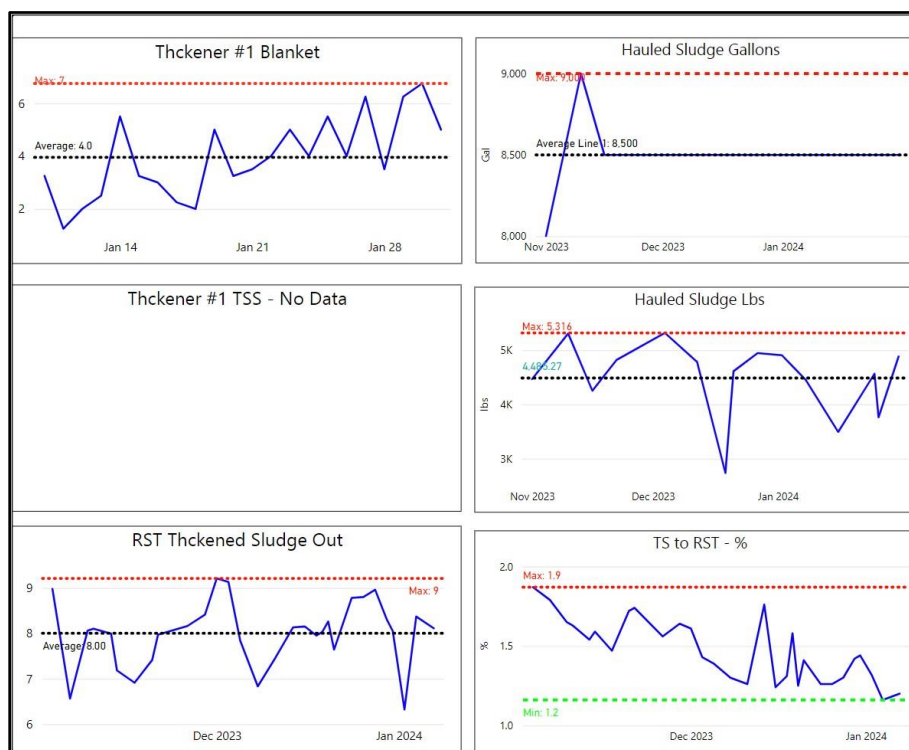


2.2 Secondary Processes

Below are Process Summary Graphs produced on the Power BI dashboard illustrating trends over a 2-month period ending on 1-31-2024.



Secondary Processes continued...

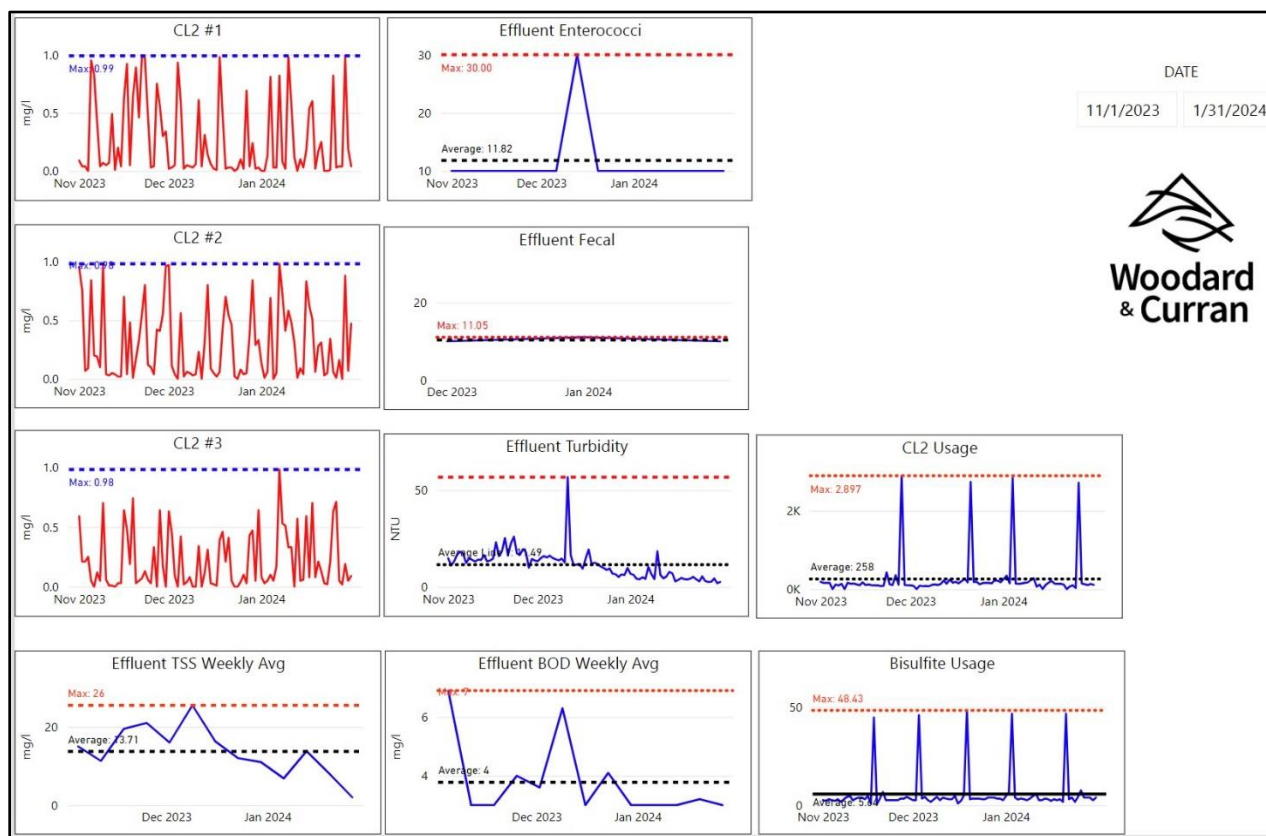


2.3 Permit Compliance

There were 163 effluent samples taken in the month of January. A table summarizing the results of these samples is shown below. The quality of effluent was satisfactory, and turbidity (NTU) levels were normal.

Permit Compliance												
Parameter Info			Permit Requirements					Results				
Parameter	Hach WIMS Variable #	Units	Daily Max	Daily Min	Weekly Avg Max	Monthly Avg Max	Freq	Period Avg	Period Min	Period Max	# of Samples	# of Violations
Eff TSS	104 / 999081	MG/L	50		45	30	1 X Week	7.4	2.0	13.8	5	0
Eff TSS	184	LBS			1152	768	1 X Week	151.2	29.2	270.5	5	0
% TSS Rem	208	%		85			1 X Month	98.0			1	0
Eff BOD	108	MG/L	50		45	30	1 X Week	3.6	3.0	5.7	5	0
Eff BOD	185	LBS			1152	768	1 X Week	70.9	43.8	119.8	5	0
% BOD Rem	207	%		85			1 X Month	99.1			1	0
Eff Chlorine	142	MG/L	1			0.7	3 X Day	0.26	0.01	0.93	93	0
Eff Fecal	111	#/100 ML	260			88	1 X Week	10.0	10.0	10.0	14	0
Eff pH	136	SU	8.5	6.5			1X Daily	6.8	6.6	7.3	31	0
Enterococci	255	#/100 ML	276			35	1 X Week	10	10	10	5	0
								Totals			163	0

Effluent Quality

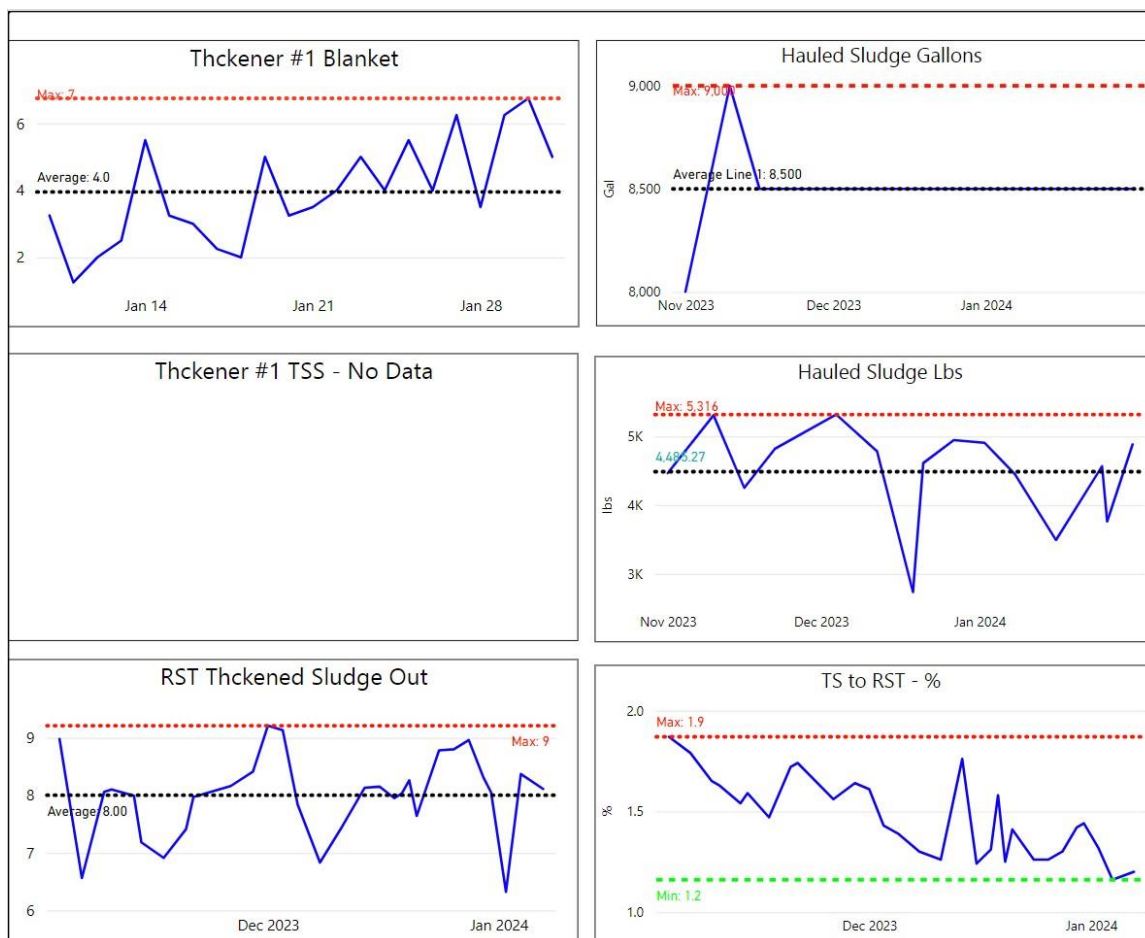


2.4 Solids Handling & Odor Control

Sewage Gallons Treated vs Sludge Disposed

Month	Effluent Treated, MG	Sludge Disposed, Gals
Jan 2022	42.8	87,000
Jan 2023	72.9	85,500
Jan 2024	81.7	51,000

Graphs illustrating sludge/solids handling parameters over a 3-month period (ending 1-31-2024) generated by Power BI are shown below.

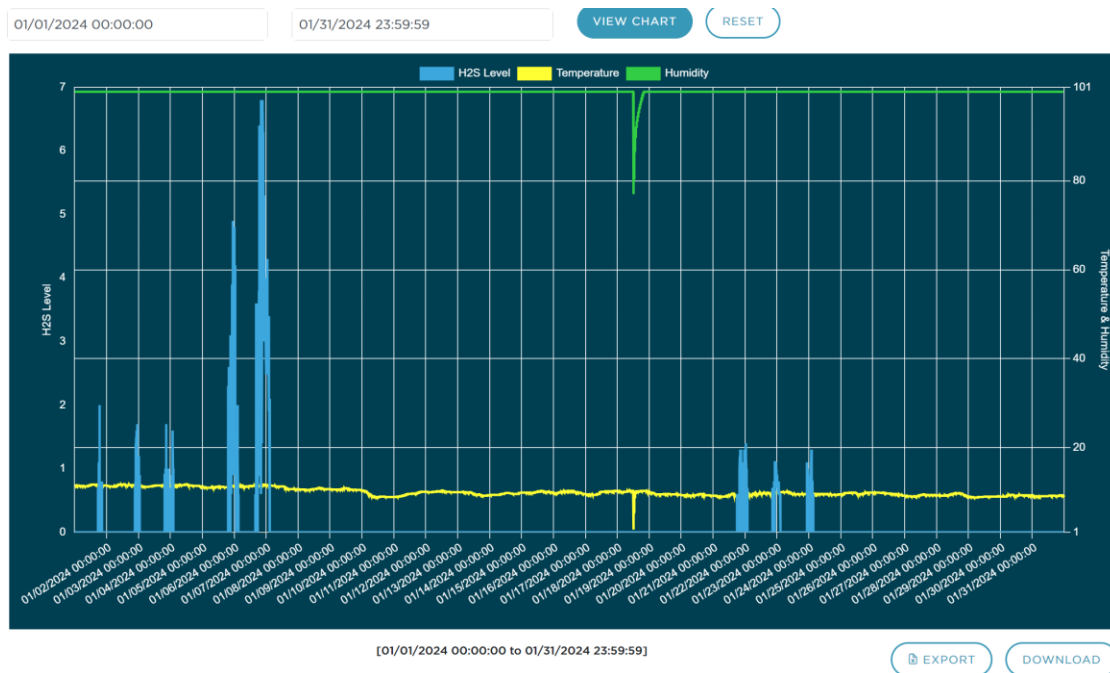


The Bioxide system was on, but the feed rates were minimal, as the normal seasonal temperatures were cooler. Monthly graphs are attached below, and the daily average Bioxide use for January was about 23 gallons per day.

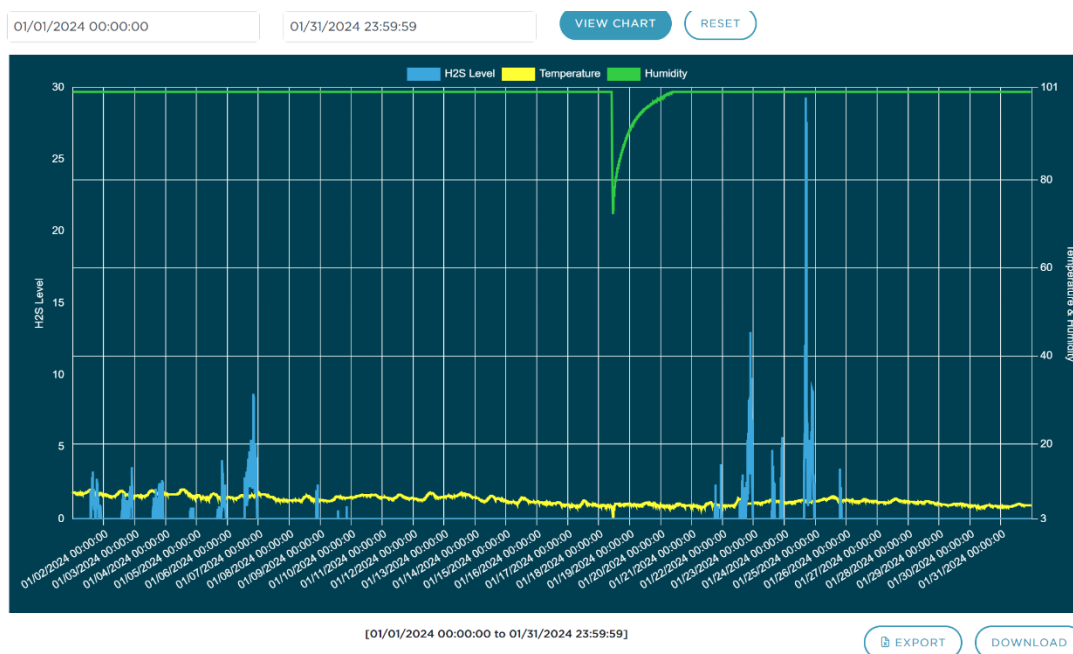
- The "In-Pipe" bacteria containers in the collection system manholes were changed out on January 3rd and 25th.
- Slight changes - Hydrogen sulfide (H₂S) monitoring units were recording and trending on the odor scrubber. [inlet and outlet]. Increased scrubber fan speed slightly. See graph below:



The odor data logging unit at XYZ monitoring locations, recording the overall H₂S levels close to the plant, are shown in the graph below. During the month of January there was normal H₂S detected at this monitoring location.



Pump station #3 - H₂S is monitored at the end of the force main in the manhole at Nantasket Ave & Water Street. Bioxide is added to allow excess nitrate in the sewage system to treat the additional H₂S from other parts the system – such as PS #4, contributions from lines feeding the interceptor - PS #5, PS #6, PS #9, Spinnaker Island, etc., all the way to the wastewater plant. H₂S levels through January were minimal, with generally mild temps for winter, and adjustments for substantially less Bioxide feed were made.



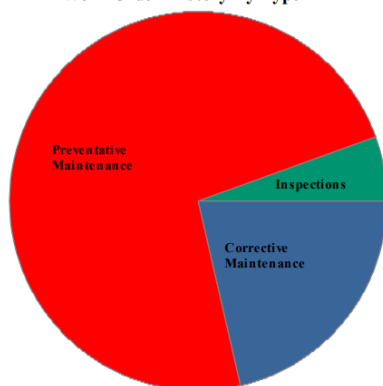
3. MAINTENANCE SUMMARY

D PrimaryClarifer



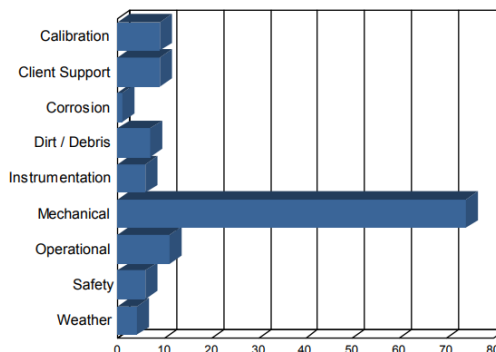
Corrective Maintenance	27
Inspections	7
Preventative Maintenance	92
Total Work Orders	126

Maintenance History Report
Hull Wastewater
Work Order History By Type

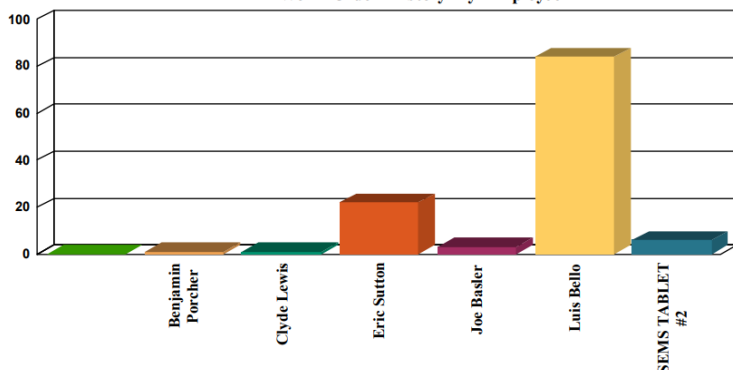


Start Date: 1/1/2024
End Date: 1/31/2024

Work Order History by Reason



Work Order History By Employee



Employee	WO Count	Labor Hours
Benjamin Porcher	1	1
Clyde Lewis	1	1
Eric Sutton	22	19
Joe Basler	3	0
Luis Bello	83	1
SEMS TABLET #2	6	0
Unassigned	10	34
Totals	126	56

The SEMS monthly work order summary for January is attached for review.

3.1 Maintenance Summary

- On January 2nd, the #2 pump de-ragger at PS#6 was found to be not working. Investigation by W&C staff revealed that the unit's circuit breaker had tripped, the breaker was reset, and the de-ragger resumed its normal functioning.
- On January 6 the gravity sludge thickener, GT-1, was put online for the winter months in lieu of W&C staff using the RST, rotary sludge thickener. GT-1 is fed sludge from primary clarifier #2, whereas the RST fed sludge comes from the sludge holding tank #2, which is underground. The RST will undergo some very necessary mechanical upgrades during the winter downtime.
- The Primary Gallery sump pump's high-level alarm was found to be not working on Jan 5 during the weekly plant high level alarm testing. The communication sending wire to SCADA was compromised when Barletta electrical subcontractor Annese did some work about Aeration Tank #1 and Primary Clarifier #2.

- The sludge Gravity Thickener (GT-1) motor broke a sheer pin and stopped operating on January 27, triggering a high torque alarm. A rotating rake arm assembly scraper likely got caught on something on the floor of the tank to create more torque which in turn broke the sheer pin. A new sheer pin was installed, the motor and rake arm assembly inspected, and GT-1 was put back into service with no further issues.
- On January 30 W&C staff repaired some small rot holes in the scum trough of Primary Clarifier #2. These repairs are temporary, when the clarifier is empty for the warmer weather the holes will be welded for a permanent fix.

Please see the attached summary totals and planned expenditures for the Asset Management accounts for contract year (8). Most recent through 12/28/23.

4. SAFETY



It is Woodard & Curran's policy to maintain a safe and healthy working environment for all employees and to comply with all applicable occupational health & safety regulations.

- There were no lost time incidents reported for January.
- On January 9th Plymouth County Fire Extinguisher did the required annual inspections of all the plant and pump station fire extinguishers.
- Monthly PM's - emergency eyewash and shower inspections, fire extinguishers, and emergency lighting inspections completed.
- Monthly calibrations were performed on all MX4 & Max XT11 gas meters.
- W&C's Pure Safety topic for January was Ladder Safety Awareness.
- W&C's monthly safety inspection checklist for the plant and stations was completed.
- The staff's monthly SPARKS safety meeting was held on January 30th, including a look at W&C's monthly "Lessons Learned!" - which is a review of any safety related incidents occurring at all other W&C projects.

5. STAFF DEVELOPMENT

5.1 Training

Training is an important part of any operation to ensure that employee health and safety is assured, quality standards are supported, staff skills are improved, career opportunities become available, and higher productivity is achieved.

Listed is a general outline of training that the staff received over the course of the month:

- All staff completed W&C's monthly Pure Safety training module. The staff's monthly SPARKS safety meeting was held on January 30. Topics discussed were forklift operation, sitework trenching, and guarding floor & wall openings on the jobsite. Staff also reviewed the "near-miss" incidents occurring at all W&C projects during the month of October in "Lessons Learned!"

5.2 Staffing Updates

- Plant continues to have weekend coverage supplemented with part-time staffers Roger Boltrushek and Ryan Holman, in addition to Mike S, Joe B, Luis B, Eric S, Clyde L, and Ben P.
- O&M Specialist Paul Horigan continues to assist here at Hull as needed with plant O&M projects as needed.

6. COLLECTION SYSTEM

6.1 Wet Well Maintenance

Pump stations are maintained by the operations team at the Hull WPCF. Below is a maintenance summary for the pump stations owned by the Town of Hull.

Table Key:

"X" – Pump Station Cleaned

■ – Pump Station Inspected

■ – See notes for additional information

blank – No Work Performed

Month	Pump Station							
	A	1	3	4	5	6	9	D
May 2023								
June 2023	X			X				
July 2023								
August 2023								
September 2023								
October 2023								
November 2023								
December 2023								
January 2024								
February 2024								
March 2024								
April 2024								

All pump stations, excluding Pump Station 3 and Station D, have an aerator/mixer in the wet wells.

6.2 Collection System Maintenance

Collection system work is documented and tracked in Utility Cloud (UC). A summarized report for November has been included as an attachment to the Monthly Operating Report.

seal the following areas during the month of Janu. Ongoing backup and blockage call outs requiring an increase in labor and time to support. A summary of W&C's efforts at the various call out locations is as follows:

- There were no calls for E-One Grinder pump service through January.
- Pump station emergency generator testing consists of a weekly no load running and a monthly loaded running.
- All pump station wet wells were inspected in January, inspections are combined with the monthly station PM's.
- Uploading new or updated tie-cards to the UC as required.
- Dig-Safe mark outs are completed throughout the Town of Hull as needed to assist and facilitate scheduled and emergency gas repairs, broken water mains, roadway paving projects, and other residential and town projects. All are listed in the UC summary.
- On January 10 W&C staff were called out to investigate a building's flooded lower-level basement at 12 Park Avenue. This area experienced quite a Nor'easter storm on Jan 9-10th bringing with it some 2-3 inches of rain.
- Industrial Pump Sales & Service (IPS) was at PS #3 on January 16 to remove the #1 pump and volute assembly as one unit. IPS was there previously to checkout and maintain both pumps #1 & #2 after a high flows rain event but could not separate pump #1 from its aging, well-worn volute. The pump and volute were both taken back to their shop for overdue rebuilding.
- January 17th W&C staff were called upon to investigate a sinkhole reported nearby manhole #20247 at 15 R Street. The problem turned out to be a potable water supply issue and Wier River was called out to the address.
- On January 3rd and 25th the 24 manhole in-pipe units were refilled, new batteries put in if needed, or pump maintenance was done, if any was necessary.
- W&C staff assisted a Trimble sales rep with a confined space entry (CSE) into manhole #30072 at Towne Way to retrieve a flow metering device. The HSD tested out Trimble's "RU-35 Telog" flow recording unit to monitor suspected unwanted inflows & infiltration getting into the collection system in that area.

7. PROJECT MANAGEMENT & ADMINISTRATION



7.1 Ongoing Projects and Support Items- January Updates:

- Phase 2 Influent upgrade lead contractor Barletta Heavy Division and other subcontractors are onsite regularly.
- On January 2 work commenced on the Effluent Outfall Pipe rehabilitation by Semper Dive and their sub-contractors
- Plant Manager Mike S. and Assistant Plant Manager Joe B. are meeting weekly with John S. and Tom M. to discuss the Hull Sewer Department operations, any treatment plant issues, the collection system maintenance, and any upcoming projects.





woodardcurran.com

Date	Asset ID	Asset Description	Asset Class	Name
1/6/2024 12:31	01-001-A	180 MAIN ST	Hull Parcels	Sutton, Eric
1/17/2024 10:30	01-021	5 ARTHUR ST	Hull Parcels	Sutton, Eric
1/5/2024 10:21	02-008	2 MILDRED ST	Hull Parcels	Sutton, Eric
1/17/2024 8:33	02-011	27 CHANNEL ST	Hull Parcels	Sutton, Eric
1/30/2024 14:46	03-095	19 LAFAYETTE RD	Hull Parcels	Sutton, Eric
1/11/2024 7:38	09-009	939 NANTASKET AVE	Hull Parcels	Sutton, Eric
1/30/2024 14:52	10902	12" AC Pipe	Hull Sewer Main	Sutton, Eric
1/5/2024 10:31	12-109	845 NANTASKET AVE	Hull Parcels	Sutton, Eric
1/6/2024 12:58	14-121	118 CADISH AVE	Hull Parcels	Sutton, Eric
1/30/2024 14:42	14-121	118 CADISH AVE	Hull Parcels	Sutton, Eric
1/30/2024 14:40	16-015	37 CADISH AVE	Hull Parcels	Sutton, Eric
1/11/2024 13:58	19 Richards Rd	19 Richards Rd Grinder Pump	Hull Grinder Pumps	Sutton, Eric
1/29/2024 9:42	19-121	167 SAMOSET AVE	Hull Parcels	Sutton, Eric
1/9/2024 11:38	21 Richards Rd	21 Richards Rd Grinder Pump	Hull Grinder Pumps	Sutton, Eric
1/25/2024 10:12	21 Richards Rd	21 Richards Rd Grinder Pump	Hull Grinder Pumps	Sutton, Eric
1/8/2024 11:18	21-047	111 BEACH AVE	Hull Parcels	Sutton, Eric
1/30/2024 14:43	21-047	111 BEACH AVE	Hull Parcels	Sutton, Eric
1/8/2024 11:19	21-048	113 BEACH AVE	Hull Parcels	Sutton, Eric
1/30/2024 14:44	21-048	113 BEACH AVE	Hull Parcels	Sutton, Eric
1/6/2024 13:07	21-091	155 SAMOSET AVE	Hull Parcels	Sutton, Eric
1/8/2024 11:10	23-025	200 KINGSLEY RD	Hull Parcels	Sutton, Eric
1/29/2024 12:48	23-025	200 KINGSLEY RD	Hull Parcels	Sutton, Eric
1/6/2024 13:11	23-032	178 KINGSLEY RD	Hull Parcels	Sutton, Eric
1/29/2024 12:51	23-032	178 KINGSLEY RD	Hull Parcels	Sutton, Eric
1/8/2024 11:13	23-075	556 NANTASKET AVE	Hull Parcels	Sutton, Eric
1/11/2024 6:42	24-018	19 KENBERMA ST	Hull Parcels	Sutton, Eric
1/10/2024 10:20	28-015	443 NANTASKET AVE	Hull Parcels	Sutton, Eric
1/23/2024 11:06	29-061	54 EDGEWATER RD	Hull Parcels	Sutton, Eric
1/11/2024 14:02	30 Pond St	30 Pond St Grinder Pump	Hull Grinder Pumps	Sutton, Eric
1/5/2024 10:52	35-026	97 BAY STREET	Hull Parcels	Sutton, Eric
1/29/2024 9:40	36-104	11 MAYFLOWER AVE	Hull Parcels	Sutton, Eric
1/11/2024 13:46	37-006-A	50 GEO WASH BLVD	Hull Parcels	Sutton, Eric
1/12/2024 11:39	37-006-A	50 GEO WASH BLVD	Hull Parcels	Sutton, Eric
1/26/2024 8:48	37-006-A	50 GEO WASH BLVD	Hull Parcels	Sutton, Eric
1/11/2024 13:42	37-007	48 GEO WASH BLVD	Hull Parcels	Sutton, Eric
1/26/2024 8:51	37-007	48 GEO WASH BLVD	Hull Parcels	Sutton, Eric
1/11/2024 7:50	38-029	12 PARK AVE	Hull Parcels	Sutton, Eric
1/18/2024 15:12	49 Wyola Rd	49 Wyola Rd Grinder Pump	Hull Grinder Pumps	Sutton, Eric
1/29/2024 9:38	51-015	7 RICHARDS RD	Hull Parcels	Sutton, Eric
1/30/2024 9:37	52-006	34 GUN ROCK AVE	Hull Parcels	Sutton, Eric
1/30/2024 9:39	52-006	34 GUN ROCK AVE	Hull Parcels	Sutton, Eric

1/30/2024 14:33 Bateria UNIT #21	UNIT #21	Hull In Pipe Bateria Unit	Sutton, Eric
1/30/2024 14:36 Bateria UNIT #22	UNIT #22	Hull In Pipe Bateria Unit	Sutton, Eric
1/30/2024 14:27 Bateria UNIT # 8	UNIT # 8	Hull In Pipe Bateria Unit	Sutton, Eric
1/30/2024 14:20 Bateria UNIT #1	UNIT #1	Hull In Pipe Bateria Unit	Sutton, Eric
1/30/2024 14:26 Bateria UNIT #10	UNIT #10	Hull In Pipe Bateria Unit	Sutton, Eric
1/30/2024 14:30 Bateria UNIT #11	UNIT #11	Hull In Pipe Bateria Unit	Sutton, Eric
1/30/2024 14:35 Bateria UNIT #12	UNIT #12	Hull In Pipe Bateria Unit	Sutton, Eric
1/30/2024 14:34 Bateria UNIT #13	UNIT #13	Hull In Pipe Bateria Unit	Sutton, Eric
1/30/2024 14:32 Bateria UNIT #14	UNIT #14	Hull In Pipe Bateria Unit	Sutton, Eric
1/30/2024 14:33 Bateria UNIT #15	UNIT #15	Hull In Pipe Bateria Unit	Sutton, Eric
1/30/2024 14:31 Bateria UNIT #16	UNIT #16	Hull In Pipe Bateria Unit	Sutton, Eric
1/30/2024 14:27 Bateria UNIT #17	UNIT #17	Hull In Pipe Bateria Unit	Sutton, Eric
1/30/2024 14:29 Bateria UNIT #18	UNIT #18	Hull In Pipe Bateria Unit	Sutton, Eric
1/30/2024 14:29 Bateria UNIT #19	UNIT #19	Hull In Pipe Bateria Unit	Sutton, Eric
1/30/2024 14:21 Bateria UNIT #2	UNIT #2	Hull In Pipe Bateria Unit	Sutton, Eric
1/30/2024 14:23 Bateria UNIT #2	UNIT #2	Hull In Pipe Bateria Unit	Sutton, Eric
1/30/2024 14:31 Bateria UNIT #20	UNIT #20	Hull In Pipe Bateria Unit	Sutton, Eric
1/30/2024 14:36 Bateria UNIT #23	UNIT #23	Hull In Pipe Bateria Unit	Sutton, Eric
1/30/2024 14:22 Bateria UNIT #24	UNIT #24	Hull In Pipe Bateria Unit	Sutton, Eric
1/30/2024 14:28 Bateria UNIT #3	UNIT #3	Hull In Pipe Bateria Unit	Sutton, Eric
1/30/2024 14:23 Bateria UNIT #4	UNIT #4	Hull In Pipe Bateria Unit	Sutton, Eric
1/30/2024 14:25 Bateria UNIT #5	UNIT #5	Hull In Pipe Bateria Unit	Sutton, Eric
1/30/2024 14:24 Bateria UNIT #6	UNIT #6	Hull In Pipe Bateria Unit	Sutton, Eric
1/30/2024 14:26 Bateria UNIT #7	UNIT #7	Hull In Pipe Bateria Unit	Sutton, Eric
1/30/2024 14:37 Bateria UNIT #9	UNIT #9	Hull In Pipe Bateria Unit	Sutton, Eric
1/17/2024 8:57 MH-20249	SEMS_Asset	Sanitary Manhole	Sutton, Eric
1/17/2024 15:03 MH-20249	SEMS_Asset	Sanitary Manhole	Sutton, Eric
1/5/2024 14:38 MH-20834	SEMS_Asset	Sanitary Manhole	Sutton, Eric
1/5/2024 14:35 MH-20835	SEMS_Asset	Sanitary Manhole	Sutton, Eric
1/5/2024 14:31 MH-20836	SEMS_Asset	Sanitary Manhole	Sutton, Eric
1/5/2024 14:12 MH-20837	SEMS_Asset	Sanitary Manhole	Sutton, Eric
1/5/2024 14:14 MH-20838	SEMS_Asset	Sanitary Manhole	Sutton, Eric
1/5/2024 14:27 MH-20839	SEMS_Asset	Sanitary Manhole	Sutton, Eric
1/5/2024 14:19 MH-20840	SEMS_Asset	Sanitary Manhole	Sutton, Eric
1/5/2024 14:21 MH-20843	SEMS_Asset	Sanitary Manhole	Sutton, Eric
1/5/2024 14:23 MH-20845	SEMS_Asset	Sanitary Manhole	Sutton, Eric
1/5/2024 14:05 MH-20846	SEMS_Asset	Sanitary Manhole	Sutton, Eric
1/5/2024 14:01 MH-20847	SEMS_Asset	Sanitary Manhole	Sutton, Eric
1/5/2024 13:52 MH-20849	SEMS_Asset	Sanitary Manhole	Sutton, Eric
1/5/2024 13:39 MH-20851	SEMS_Asset	Sanitary Manhole	Sutton, Eric
1/17/2024 10:43 MH-21041	SEMS_Asset	Sanitary Manhole	Sutton, Eric

[illegible]

[illegible]



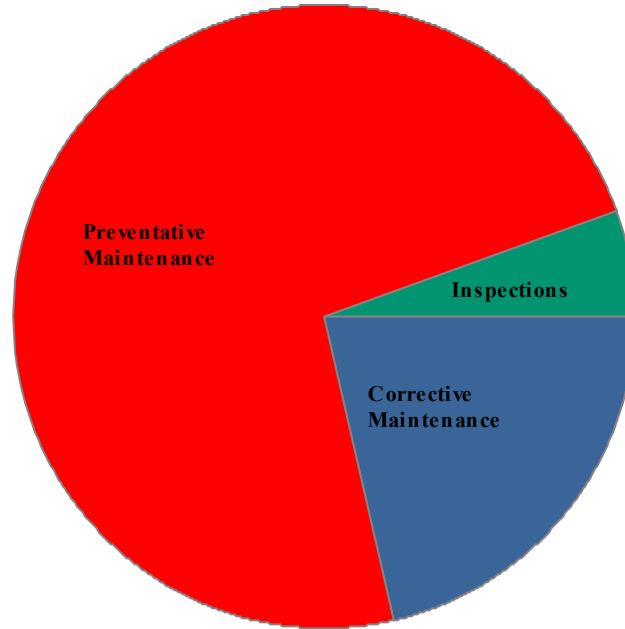
Maintenance History Report

Hull Wastewater

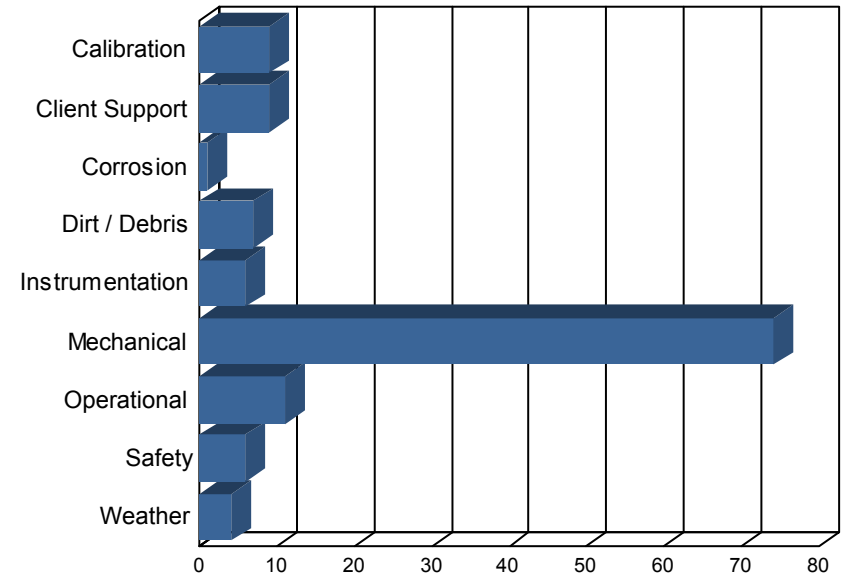
Start Date: 1/1/2024
End Date: 1/31/2024

Work Order History By Type

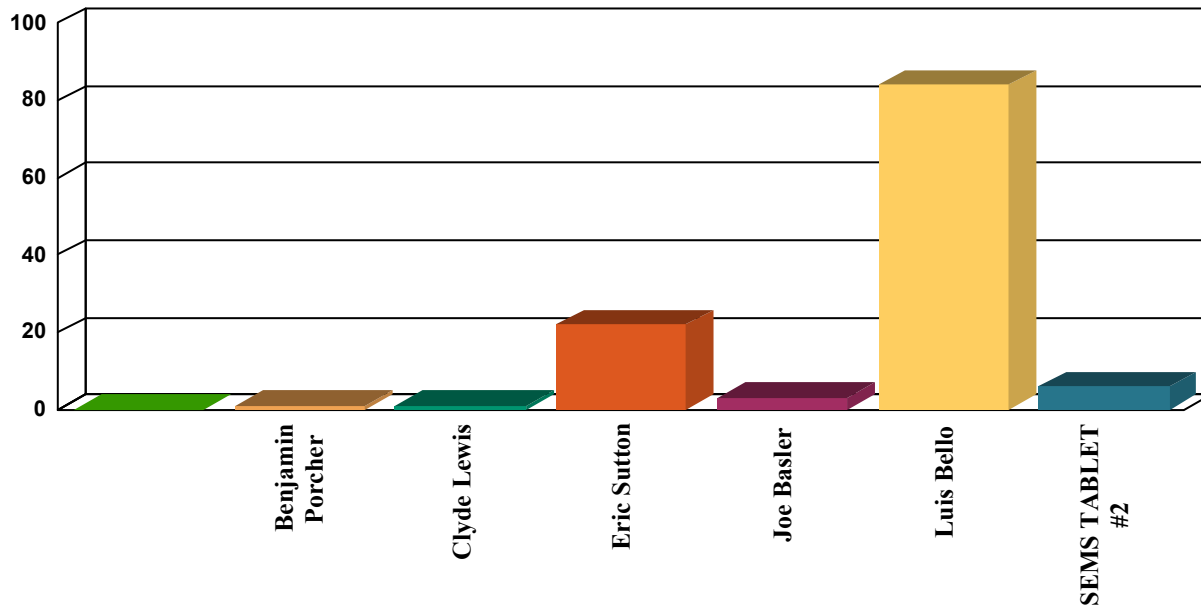
Corrective Maintenance	27
Inspections	7
Preventative Maintenance	92
Total Work Orders	126



Work Order History by Reason



Work Order History By Employee



Employee	WO Count	Labor Hours
Benjamin Porcher	1	1
Clyde Lewis	1	1
Eric Sutton	22	19
Joe Basler	3	0
Luis Bello	83	1
SEMS TABLET #2	6	0
Unassigned	10	34
Totals	126	56

Corrective Maintenance

Status Date	WO #	Asset Name	Work Description	Work History Note	Employee	Schedule Date	Status
1/3/24	19098	PS 6 Pump 2	Derrager in alarm	Es ph at station 6 trouble shoot derrager key pad then reset, now operational	Eric Sutton	1/3/24	Completed
1/3/24	19097	PS D Building	Set up six inch trash pump due to weather	Es cl set six inch trash pump due to weather	Clyde Lewis	1/3/24	Completed
1/4/24	19099	Lab	PH meter	Reconfigure PH meter due to configuration loss.	Joe Basler	1/4/24	Completed
1/4/24	19100	30 - WW Treatment Plant - General	Moved electrician pipes, hoses, steel plate, wood, and 4 inch trash pump, due to snow storm	Es cl prepare wwtf by moving electrician pipes, hoses, steel plate, wood and four inch trash pump to prepare for snow storm		1/4/24	Completed
1/5/24	19101	20 - WW - collections - general	Mh inspections up stream station 3	This is W/Os for station 3 upstream MHs excess flow more to come following a vactor truck and CCTV truck		1/5/24	Completed
1/10/24	19102	PS 3 Pump 1	Es ms cl De ragged check valve	Es Ms LOTO performed removed check valve cover de ragged now operational.	Eric Sutton	1/10/24	Completed
1/10/24	19103	PS 3 Wet Well	Responded to high wetwell alarm from luiz.	Es on site station 3, luiz got call high wetwell alarm, he called me, wetwell has bin in alarm, fir 18 hrs, due to heavy rain event. At 230 pm wetwell was 229" at 730 pm its down to 150" pumping 850 gal/min. High alarm is 120". Observation at arrival is wetwell must got below 120", then went above 120" to send alarm. Progress is being made. Rough calculations since 2am 800gal/min x60 =48,000 gal/hr x18hrs = 864,000 gal.	Eric Sutton	1/10/24	Completed
1/11/24	19104	22 - WW - sewers/pipes/force mains	MH inspections Park ave area Back up at 12 Park ave Heavy rain charged MHs thru out the town	12 park ave basement flood from sewer back up		1/10/24	Completed
1/12/24	19105	RAS Pump 1	Low flow	Cleared Ras 1 of debris		1/12/24	Completed
1/12/24	19106	RAS Pump 3	Low flow	Cleared debris from RAS pump #3		1/12/24	Completed
1/22/24	19113	21 - WW - end users devices - grinder pumps, etc.	15 marina Dr spinaka island.	Muzzi drain called bout grinder pump on spinika Island, back up, Spinika island is private and told to call FRMahoney for assistance	Eric Sutton	1/24/24	Completed
1/22/24	19107	22 - WW - sewers/pipes/force mains	Excavation of sewer line collapse George Washington Blvd	Not complete took pic for update	Eric Sutton	1/23/24	Completed
1/22/24	19111	Plant Water System	Barletta needed plant water system off to cut and cap line. W/C contributed to task	W/C shut plant water off for Barletta to cut and cap line by primary building, to continue there work. Plant water back on.	Eric Sutton	1/22/24	Completed
1/22/24	19110	32 - WW Influent Process	Barletta const needed infilent pumps 1, 2 off, and isolated to cut and cap 8" influent line in-between aeration 3 and primary 2. Es, Ms. LB, did complete.	Es ,Ms. LB contributed to task took bout 1hr. However, it was all day pumps were off till cut and cap completed. Then W/C was able to put influent pumps 1 an 2 back on line		1/23/24	Completed
1/23/24	19112	22 - WW - sewers/pipes/force mains	230 pm Mobilized 4" pump then at 530 pm mobilized 6" trash pump to excavation site george Washington blvd	230 pm W/C es ms bp mobilized 4" trash pump, 60' hose , 100' layflat to site		1/24/24	Completed
1/23/24	19109	22 - WW - sewers/pipes/force mains	Got call to George Washington Blvd twice to CCTV lateral but weren't ready	Es Clyde arrived at George Washington Blvd twice once at 10am once at 230pm both times not ready		1/22/24	Completed
1/23/24	19108	20 - WW - collections - general	5 grinder pumps to FRM	Es brought 5 grinder pumps to FRM	Eric Sutton	1/23/24	Completed

Corrective Maintenance

Status Date	WO #	Asset Name	Work Description	Work History Note	Employee	Schedule Date	Status
1/24/24	19117	PS 1 Wet Well	Transducer failure	Es Jb on site, replaced transducer	Eric Sutton	1/24/24	Completed
1/24/24	19119	PS 1 Wet Well	730 am transducer issue	Es Lb on site pulled transducer cleaned put back, levels came back station operational till 330pm Transducer failed then es jb installed new transducer	Eric Sutton	1/24/24	Completed
1/24/24	19121	22 - WW - sewers/pipes/force mains	CCTV 130' 50 George Washington Blvd Jake's seafood lateral. Part of sewer line collaps	ES CL CCTV 130' Jake's seafood part of sewer line collapse	Eric Sutton	1/25/24	Completed
1/24/24	19116	20 - WW - collections - general	Confine space entry MH 30072 townway/ main st	Es BP on site confine space entry set air monitoring to retrieve Raven eye 2 inflow assessment device. Entering Mh would be George Elaro tech representative.		1/25/24	Completed
1/24/24	19123	20 - WW - collections - general	Retrieve 6B 6" trash pump and 200' of 6" layflat hose from george Washington blvd sewer collapse. 1 of 3 pumps W/C Provided to the issue	ES CL on site collecting 6" 6B trash pump 200' layflat hose	Eric Sutton	1/24/24	Completed
1/25/24	19115	33 - WW Primary Treatment	Empty primary #1	Take down & hosed/cleaned primary #1.		1/25/24	Completed
1/25/24	19122	22 - WW - sewers/pipes/force mains	CCTV 160' 48 George Washington Blvd marina part of sewer line collapse	ES CL CCTV 160' (INSPECTION OF LATERAL) 48 George Washington Blvd	Eric Sutton	1/25/24	Completed
1/25/24	19118	22 - WW - sewers/pipes/force mains	CCTV 100' lateral 50 George Washington Blvd	Es used CCTV camera 50 george Washington blvd/ jakes seafood lateral this has to do with collapsed sewer main excavation	Eric Sutton	1/24/24	Completed
1/25/24	19120	34 - WW Secondary Treatment	Ras pumps	We unclogged both RAS pumps #1,3.	Luis Bello	1/25/24	Completed
1/26/24	19124	30 - WW Treatment Plant - General	Es CL collected 2/6" hose from draper DPW station, remainder of 4" and 6" hoses at George Washington blvd, drained 4" pump at primary 1, rapped up 4" hoses, layflat, bout 500 of 2" spay hoses, put in	2 hrs see pics	Eric Sutton	1/26/24	Completed

Inspections

Status Date	WO #	Asset Name	Work Description	Work History Note	Employee	Schedule Date	Status
1/9/24	18546	PS 1	PS #1 Inspection - Monthly		Luis Bello	12/7/23	Completed
1/16/24	18651	Emergency Lighting & exit signs	Emergency Lighting Inspection - Monthly		Luis Bello	1/10/24	Completed
1/17/24	18785	Blower Room Exhaust Fan 1	Monthly operational inspection		Luis Bello	1/1/24	Completed
1/17/24	18786	Blower Room Exhaust Fan 2	Monthly operational inspection		Luis Bello	1/1/24	Completed
1/19/24	18743	Truck 1 - 2010 Dodge Ram 1500	Monthly vehicle inspection on do-Forms		Luis Bello	1/1/24	Completed
1/19/24	18762	Truck 3 - 2015 Chevy 3500 HD	Monthly vehicle inspection on do-Forms	??	Eric Sutton	1/1/24	Completed
1/24/24	19114	Fire Extinguishers	Checked Fire extinguishers and locations	Walked around the plant and inspected fire extinguishers	Benjamin Porcher	1/24/24	Completed

Preventative Maintenance

Status Date	WO #	Asset Name	Work Description	Work History Note	Employee	Schedule Date	Status
1/2/24	18658	Generator #1- Emergency Kohler 750	Generator Weekly - Test Run no load		SEMS TABLET #2	1/1/24	Completed
1/2/24	18701	PS 1 Generator	PS #1 Generator Inspection and Test - Weekly		Luis Bello	1/3/24	Completed
1/2/24	18706	PS 1 Generator	PS #1 Generator Inspection and Load Test - Monthly		Luis Bello	1/3/24	Completed
1/2/24	18707	PS 3 Generator	PS #3 Generator Inspection and Load Test - Monthly		Luis Bello	1/3/24	Completed
1/2/24	18708	PS 3 Generator	PS #3 Generator Inspection and Test - Weekly		Luis Bello	1/3/24	Completed
1/2/24	18713	PS 4 Generator	PS #4 Generator Inspection and Test - Weekly		Luis Bello	1/3/24	Completed
1/2/24	18718	PS 4 Generator	PS #4 Generator Inspection and Load Test - Monthly		Luis Bello	1/3/24	Completed
1/2/24	18725	PS 9 Generator	PS #9 Generator Inspection and Load Test - Monthly		Luis Bello	1/3/24	Completed
1/2/24	18726	PS 9 Generator	PS #9 Generator Inspection and Test - Weekly		Luis Bello	1/3/24	Completed
1/2/24	18731	PS 6 Generator	PS #6 Generator Inspection and Test - Weekly		Luis Bello	1/3/24	Completed
1/2/24	18736	PS 6 Generator	PS #5 Generator Inspection and Load Test - Monthly		Luis Bello	1/3/24	Completed
1/2/24	18748	PS Kholer Trailer Mounted Generator	Generator - Monthly Load Test		Luis Bello	1/7/24	Completed
1/2/24	18719	PS 5 Generator	PS #5 Generator Inspection and Load Test - Monthly		Luis Bello	1/3/24	Completed
1/2/24	18720	PS 5 Generator	PS #5 Generator Inspection and Test - Weekly		Luis Bello	1/3/24	Completed
1/2/24	18653	Generator #2 - Backup Detroit 500	Generator Weekly - Test Run no load		Luis Bello	1/1/24	Completed
1/2/24	18534	RAS Pump 1	Monthly Check Pump Couplings		Luis Bello	12/6/23	Completed
1/2/24	18535	RAS Pump 2	Monthly Check Pump Couplings		Luis Bello	12/6/23	Completed
1/2/24	18536	RAS Pump 3	Monthly Check Pump Couplings		Luis Bello	12/6/23	Completed
1/2/24	18315	FIRE ALARM SYSTEM	Fire alarm - semi annual		Luis Bello	10/2/23	Completed
1/2/24	18207	Backflow Preventer - HVAC Room Boiler Makeup Feed	Backflow Preventor Test (HVAC Room Boiler) - Semi Annual		Luis Bello	10/11/23	Completed
1/2/24	18465	Chlorine probe ATI	ATI, change membrane		Luis Bello	11/1/23	Completed
1/2/24	18464	Chlorine probe ATI	Change electrolyte		Luis Bello	11/1/23	Completed
1/2/24	18462	Chlorine probe ATI	Weekly calibration		Luis Bello	11/6/23	Completed
1/2/24	18463	Chlorine probe ATI	Weekly calibration		Luis Bello	11/20/23	Completed
1/2/24	18449	Grit Chamber Blower #4	Grit Rotary Blower #4 PM - Annual		Luis Bello	11/22/23	Completed
1/2/24	18606	Chlorine probe ATI	Change electrolyte		Luis Bello	12/1/23	Completed
1/2/24	18604	Chlorine probe ATI	Weekly calibration		Luis Bello	12/4/23	Completed

Preventative Maintenance

Status Date	WO #	Asset Name	Work Description	Work History Note	Employee	Schedule Date	Status
1/2/24	18529	Aeration Tank 1 Oxygen Probe	AT #1 DO Probe Clean and Calibrate - Monthly		Luis Bello	12/5/23	Completed
1/2/24	18530	Aeration Tank 3 Oxygen Probe	AT #3 DO Probe Clean and Calibrate - Monthly		Luis Bello	12/5/23	Completed
1/2/24	18583	Plant Water Pump 2	Monthly Check Pump Couplings		Luis Bello	12/6/23	Completed
1/2/24	18522	Influent Pump 1	Monthly Check Pump Couplings	Hi flow emergencies, it will be completed with the next work order.	Luis Bello	12/6/23	Completed
1/2/24	18523	Influent Pump 2	Monthly Check Pump Couplings	High flow emergencies, not completed, it will be done with the next work order.	Luis Bello	12/6/23	Completed
1/2/24	18501	Portable Generator - Honda	Portable Generator Inspection - Monthly		Luis Bello	12/6/23	Completed
1/2/24	18543	Primary Sludge Pump 2	Monthly Check Pump Couplings		Luis Bello	12/6/23	Completed
1/3/24	18557	PS 1 Generator	PS #1 Generator Inspection and Test - Weekly		Luis Bello	12/27/23	Completed
1/3/24	18561	PS 3 Generator	PS #3 Generator Inspection and Test - Weekly		Luis Bello	12/27/23	Completed
1/3/24	18567	PS 4 Generator	PS #4 Generator Inspection and Test - Weekly		Luis Bello	12/27/23	Completed
1/3/24	18577	PS 9 Generator	PS #9 Generator Inspection and Test - Weekly		Luis Bello	12/27/23	Completed
1/3/24	18581	PS 6 Generator	PS #6 Generator Inspection and Test - Weekly		Luis Bello	12/27/23	Completed
1/3/24	18571	PS 5 Generator	PS #5 Generator Inspection and Test - Weekly		Luis Bello	12/27/23	Completed
1/3/24	18774	Generators "All Pump Station"	Generator Weekly - Test Run no load		Luis Bello	1/1/24	Completed
1/4/24	18662	Influent Sluice Isolation Gate	Weekly operate through full range	??	Eric Sutton	1/3/24	Completed
1/4/24	18613	High level floats	Weekly High Float Alarm test		Luis Bello	12/31/23	Completed
1/4/24	18627	All Plant Gear box reducers	GEAR BOX MAINT - WEEKLY		Luis Bello	12/31/23	Completed
1/4/24	18778	All Plant Gear box reducers	GEAR BOX MAINT - WEEKLY		Luis Bello	1/7/24	Completed
1/4/24	18744	PS Kohler Trailer Mounted Generator	Generator Weekly - Test Run no load		Luis Bello	1/1/24	Completed
1/4/24	18537	RST Feed Pump 1	Monthly Check Pump Couplings		Luis Bello	12/6/23	Completed
1/4/24	18538	RST Feed Pump 2	Monthly Check Pump Couplings		Luis Bello	12/6/23	Completed
1/4/24	18615	Recirculation pump #1	Monthly Check Pump Couplings		Luis Bello	12/6/23	Completed
1/4/24	18544	Sludge Transfer Pump 1	Monthly Check Pump Couplings		Luis Bello	12/6/23	Completed
1/9/24	18657	Generator #1- Emergency Kohler 750	Generator - Monthly Load Test		SEMS TABLET #2	1/7/24	Completed
1/9/24	18652	Generator #2 - Backup Detroit 500	Generator - Monthly Load Test		Luis Bello	1/7/24	Completed
1/9/24	18542	Primary Sludge Pump 1	Monthly Check Pump Couplings		Luis Bello	12/6/23	Completed
1/9/24	18545	Sludge Transfer Pump 2	Monthly Check Pump Couplings		Luis Bello	12/6/23	Completed
1/10/24	18691	Primary Sludge Pump 2	Monthly Check Pump Couplings		SEMS TABLET #2	1/3/24	Completed

Preventative Maintenance

Status Date	WO #	Asset Name	Work Description	Work History Note	Employee	Schedule Date	Status
1/10/24	18690	Primary Sludge Pump 1	Monthly Check Pump Couplings		SEMS TABLET #2	1/3/24	Completed
1/10/24	18685	RAS Pump 1	Monthly Check Pump Couplings	BP help me out with this.	Luis Bello	1/3/24	Completed
1/10/24	18686	RAS Pump 2	Monthly Check Pump Couplings	BP helped out.	Luis Bello	1/3/24	Completed
1/10/24	18687	RAS Pump 3	Monthly Check Pump Couplings	BP helped out.	Luis Bello	1/3/24	Completed
1/10/24	18618	ORP meter	Clean and Calibrate		Luis Bello	12/10/23	Completed
1/10/24	18533	Wet Scrubber Fan	Scrubber Exhaust Fan PM - Monthly		Luis Bello	12/13/23	Completed
1/10/24	18539	Primary Scum Pump	Pen Valley Double Disc pumps - Quarterly	Not done, we need a mechanic!!	Luis Bello	12/14/23	Completed
1/10/24	18540	Secondary Scum Pump 1	Pen Valley Double Disc pumps - Quarterly	Not done, we need a mechanic!!	Luis Bello	12/14/23	Completed
1/10/24	18541	Secondary Scum Pump 2	Pen Valley Double Disc pumps - Quarterly	Not done, we need a mechanic!!	Luis Bello	12/14/23	Completed
1/10/24	18531	Effluent Pumps	Effluent Pump - Monthly		Luis Bello	12/15/23	Completed
1/11/24	18764	High level floats	Weekly High Float Alarm test		Luis Bello	1/7/24	Completed
1/12/24	18605	Chlorine probe AT1	Weekly calibration		Luis Bello	12/18/23	Completed
1/12/24	18600	Building Flood Conrtol	Semi Annual PM of Flood Gates		Luis Bello	12/21/23	Completed
1/12/24	18527	Aeration Blower 1	Aeration Blower #1 Air Filter Inspection - monthly		Luis Bello	12/26/23	Completed
1/12/24	18528	Aeration Blower 2	Aeration Blower #2 Air Filter Inspection - Monthly		Luis Bello	12/28/23	Completed
1/12/24	18597	Ventis MX4 #5 - 4 Gas	4 Gas Meter #5 Calibration - Monthly	Still waiting for parts.	Luis Bello	12/28/23	Completed
1/12/24	18557	PS 1 Generator	PS #1 Generator Inspection and Test - Weekly		SEMS TABLET #2	12/27/23	Completed
1/15/24	18596	Ventis MX4 #4 - 4 Gas	4 Gas Meter #4 Calibration - Monthly		Luis Bello	12/28/23	Completed
1/16/24	18771	pH meter	Clean and Calibrate	It wont calibrate, I need the owners manual!!	Luis Bello	1/1/24	Completed
1/16/24	18702	PS 1 Generator	PS #1 Generator Inspection and Test - Weekly		Eric Sutton	1/10/24	Completed
1/16/24	18714	PS 4 Generator	PS #4 Generator Inspection and Test - Weekly		Eric Sutton	1/10/24	Completed
1/16/24	18727	PS 9 Generator	PS #9 Generator Inspection and Test - Weekly		Eric Sutton	1/10/24	Completed
1/16/24	18732	PS 6 Generator	PS #6 Generator Inspection and Test - Weekly		Eric Sutton	1/10/24	Completed
1/16/24	18721	PS 5 Generator	PS #5 Generator Inspection and Test - Weekly		Eric Sutton	1/10/24	Completed
1/16/24	18663	Influent Sluice Isolation Gate	Weekly operate through full range	We been having several high flow emergencies in the pass few weeks, we have had to lower the Influent gate several times.	SEMS TABLET #2	1/10/24	Completed
1/16/24	18772	ORP meter	Clean and Calibrate	It wont calibrate, we need the owners manual.	Luis Bello	1/10/24	Completed
1/17/24	18761	Chlorine probe AT1	Change electrolyte	It is still working fine, no change needed.	Joe Basler	1/1/24	Completed
1/17/24	18758	Chlorine probe AT1	Weekly calibration	No calibration needed.	Joe Basler	1/1/24	Completed

Preventative Maintenance

Status Date	WO #	Asset Name	Work Description	Work History Note	Employee	Schedule Date	Status
1/19/24	18672	Influent Pump 3	Monthly Check Pump Couplings		Luis Bello	1/3/24	Completed
1/19/24	18673	Influent Pump 3	Semi Annual - ARI air release valve insp and cleaning		Luis Bello	1/3/24	Completed
1/19/24	18674	Influent Pump 4	Semi Annual - ARI air release valve insp and cleaning		Luis Bello	1/3/24	Completed
1/19/24	18675	Influent Pump 4	Monthly Check Pump Couplings		Luis Bello	1/3/24	Completed
1/19/24	18709	PS 3 Generator	PS #3 Generator Inspection and Test - Weekly	Not completed, contractors working on site.	Eric Sutton	1/10/24	Completed
1/22/24	18668	Influent Pump 1	Monthly Check Pump Couplings		Luis Bello	1/3/24	Completed
1/22/24	18669	Influent Pump 1	Semi Annual - ARI air release valve insp and cleaning		Luis Bello	1/3/24	Completed
1/22/24	18670	Influent Pump 2	Semi Annual - ARI air release valve insp and cleaning		Luis Bello	1/3/24	Completed
1/22/24	18671	Influent Pump 2	Monthly Check Pump Couplings		Luis Bello	1/3/24	Completed
Status Date	WO #	Asset Name	Work Description	Work History Note	Employee	Schedule Date	Status
1/2/24	18195	Eyewash Stations	All Portable Eye wash stations - semi annual	We dont have the chemical that we need to do this.	Luis Bello	10/1/23	Completed

Asset Management Accounts - Year 9							
		Actual to date			Projected for Final Estimate		
Account		Budgeted Amount	Spent to Date	Delta	Projected costs and incl PO's	Final est	Delta
09M-101A	Preventive Maint	\$242,712.26	\$129,975.57	\$112,736.69	\$27,500.00	\$157,475.57	\$85,236.69
09M-102B	Capital and Major Repairs	\$140,000.00	\$54,738.52	\$85,261.48	\$54,188.50	\$108,927.02	\$31,072.98
09M-103A	Major Sub Contractors	\$206,459.14	\$138,032.42	\$68,426.72	\$106,000.00	\$244,032.42	(\$37,573.28)
blank							
	Asset Management	\$589,171.40	\$322,746.51	\$266,424.89	\$187,688.50	\$510,435.01	\$78,736.39

\$266,424.89

Budget expended	Time Status	
	NOW=	4/14/2024
	Start	5/1/2020
53.6%	395.9%	342.3%
39.1%	395.9%	356.8%
66.9%	395.9%	329.0%
54.8%	395.9%	341.1%

09S	D Street	\$7,500.00	\$4,222.43	\$3,277.57	\$0.00	\$4,222.43	\$3,277.57
-----	----------	------------	------------	------------	--------	------------	------------

56.3%	395.9%	339.6%
-------	--------	--------

09C	Odor Control Chemicals	\$100,000.00	\$149,384.00	(\$49,384.00)	\$0.00	\$149,384.00	(\$49,384.00)
-----	------------------------	--------------	--------------	---------------	--------	--------------	---------------

149.4%	395.9%	246.5%
--------	--------	--------

\$217,040.89

Estimated total
remaining 09M,
09C \$29,352.39

Hull 2022-2023 - 09M Projects, Tasks, and Needs - (MS)								
Maintenance Account - Year 9 - 05_01_23 to 04_30_24								
FOR 2023 M.O.R.					\$187,688.50			4/14/2024 22:15
Priority [1=high]	Description	Status	completed	Task	Estimates & funds remaining	Final Completed Cost	Lead	Comments
1	Mechanical Work Labor by O&M specialists	Pending		101A				Placeholder for Jody St. George, Paul Horigan & WC Support Staff - Total budget \$25,000;
1	Pump and Motor Repairs/Replacements [invoiced and pcard]	Pending		101A	\$8,000.00			to keep existing equipment running - utilize various outside contractor repair shops, new purchases. orig budget \$20,000;
1	Lubricants	Pending		101A	\$800.00			Various Suppliers for oil and grease. Budgeted \$1000.
1	Generator Prev. Maintenance and Repairs	Pending		101A	\$5,000.00			Orig budget \$25,000. General PM and CM Repair Work - Placeholder Reduce to \$5K for future projects using 09M-103A
1	Fire Alarm Inspections and Service	Pending		101A	\$2,700.00			Original Budget \$4,000 - Semi Annual - Flight Alarm Co.Inspections, central station, and service calls
2	Universal waste disposal	Pending		101A	\$500.00			Placeholder - \$500
1	Service the Forklift	Pending		101A	\$400.00			Placeholder \$400 - Annual cost - outside vendor.
1	Overhead Hoist Inspection & repairs	Pending		101A				Annual task - Applied Dynamics - Inspection Work - due in spring/summer 2023 \$1700.
1	Flow meter verification and calibration	Pending		101A	\$1,200.00			Placeholder \$1,200 - Annual - Ray Ferland or other 1 visit annually -
1	Facility Building - Roof Inspection	Pending		101A				\$2800 Annual Placeholder - Established contract with Tecta America. Need for new proposal. Increase to \$3500 year 10
2	Jerome H2S Meter Inspection	Pending		102B				Placeholder if new meter is to be planned for. Factors for new meter replacement to be considered. Bought new one Sept. 2023
1	Janitorial Supplies	Pending		101A	\$1,500.00			Orig budget \$3,000 - Estimated annual expenditures
1	Manhole Inspections	Pending		101A				As required,and/or scheduled
2	General mechanical and electrical items/supplies	Pending		101A	\$2,000.00			Grainger, FWWebb, EJP,Hoadley, McMasterCarr, Carl Lueders Co etc; orig budget \$20,000, Yr 10 up to \$30K
1	Thompson Pump repairs	Pending		101A				
2	Large Hoses & fittings	Pending		101A	\$3,000.00			Orig budget \$3,000. Replacements and/or Service - On-Going - As Needed.
1		Pending		102B				
3	Boiler Inspections	Pending		101A				Annual PM Boiler Inspection (Fulton) Year 2024 \$2,975.00
		Pending		101A				

Hull 2022-2023 - 09M Projects, Tasks, and Needs - (MS)								
Maintenance Account - Year 9 - 05_01_23 to 04_30_24								
FOR 2023 M.O.R.					\$187,688.50			4/14/2024 22:15
Priority [1=high]	Description	Status	completed	Task	Estimates & funds remaining	Final Completed Cost	Lead	Comments
1	Lab Equip Calibration	Pending		101A				Annual service \$640 check cost for year 10
1		Pending		101A				
	Duperon Service Call	Pending		102B				recommended services per last visit, need repair report[s]
2		Pending		101A				
1		Pending		102B				
2	New Magnetic flow meters for RAS and WAS	Pending		102B				hardware - does not include installation [estimate for Equip - \$9,000] May or may not occur. Remove from planned projects for 09M. To be assessed in year 10
2		Pending		102B				
1		Pending		102B				
1		Pending		102B				
1		Pending		102B				
3	Sanitaire hardware purchase for aer tk 1	Pending		102B				Purchase more hardware - Year 10 to be assessed, when 2 & 4 are online
1		Pending		102B				
2		Pending		102B				
2	Pump Station #3 - spare rotating, assy, or pump	Pending		102B	\$24,000.00			Industrial Pump PS3 pump removal/repair reinstall
3	New 4-inch valves or 6-inch valves for pri building between the tanks & Installation	Pending		102B				Valves - cost: \$3000, sub-contracted labor - either WC or outside co.\$5,000 - totl estim \$8,000
3	Odor log data loggers & calibr kit	Pending		102B				if funds avail
3		Pending		102B				
3	Gravity Thickener #1 sandblasting/painting	Pending		102B				Estimate \$50,000+ - would need to go out for competitive bid request

Hull 2022-2023 - 09M Projects, Tasks, and Needs - (MS)								
Maintenance Account - Year 9 - 05_01_23 to 04_30_24								
FOR 2023 M.O.R.					\$187,688.50			4/14/2024 22:15
Priority [1=high]	Description	Status	completed	Task	Estimates & funds remaining	Final Completed Cost	Lead	Comments
2		Pending		102B				
1	Grit classifier system parts	Pending		102B	\$4,500.00			Plan for additional tail shaft assy and housing & bushings. Pricing out items/costs by various vendors incl Mfr. 3/16 update - recommendations provided for spare parts
2	Plant Water System [Pump and/or parts]	Pending		102B	\$6,000.00			consider spare motor or complete unit. Under review/hold [est \$6,000].
1		Pending		102B				
1	Electrical Work	Pending		103A				Orig budget \$35,000. Electricians: Glen Fellows, HiVoltage, or other;
1	SCADA Work - service calls, etc	Pending		103A	\$4,000.00			Steve Rose and the SCADA Support Team; budget \$6,000;
1	E-One Repairs and Replacement	Pending		103A	\$34,000.00			Orig budget: \$65,000. Based on historica/recent costs.
1	Automatic Transfer Switch inspection and servicing	Pending		101A	\$2,400.00			\$2400 - Annual Service planned for NETS - Transfer Switch
1	Wetwell Inspections and Cleaning - Plant/Pump Stations	Pending		103A	\$8,000.00			As required, plant or pump stations; orig budget \$8,000;
1	Sewer Line Cleaning - Emergencies, pump & haul	Pending		103A				Placeholder - As required for various sub-contractors; could be Hoadley, Truax, WindRiver, BMC, or other, collection system & plant; budget \$10,000
1	Collection System and plant - emerg & unplanned calls - Jetting & CCTV work - various contractors	Pending		103A	\$50,000.00			Budget - \$50K, Town to provide direction - MS provided 3 quotes and Truax was selected
1		Pending		102B				
3		Pending		103A				
3	SHT1 - demo of equip, air piping & diffuser install/materials	Pending		103A				demo concrete in tank - \$15,000 - sub-contractor and installation of new equip -additional new equip \$6,000; air piping to the tank \$10,000; Total estimate: \$31k to 35K ??. For consideration with outside contractor
4	Generators - Load Bank Testing Plant & Pump Stations	Pending		103A				Look at 09M -last done under 06M. SSGen - review cost estimates.
1	Generators and portable pumps - Annual repairs	Pending		103A	\$10,000.00			Place Holder SSGen - \$20,000 (Get PO for annual service work)
1	MCC work at the Pump Stations & IR scan for plant and pump s	Pending		103A				Review recent propsal and develop plan
3	Low pressure sewer valve box insp & mtce	Pending		103A				placeholder for contractoror O&M inspections and potential repairs; Looking at Rosano-Davis or another contractor & W&C to investigate;come up with plan to rempve covers and inspect
1	Grit screw installation	Pending		102B	\$19,688.50			\$40,000 placeholder installation.

Hull 2022-2023 - 09M Projects, Tasks, and Needs - (MS)								
Maintenance Account - Year 9 - 05_01_23 to 04_30_24								
FOR 2023 M.O.R.					\$187,688.50			4/14/2024 22:15
Priority [1=high]	Description	Status	completed	Task	Estimates & funds remaining	Final Completed Cost	Lead	Comments
1		Pending		102B				
1		Pending		101A				
	HDWK fiberglass slide gate	Pending		101A				Soliciting estimates for at least one new slide gate. Placeholder [Jan 2023] \$3,000; Adjust estimate up to \$3,500 for one gate. No orders placed yet. 3/16 [AV] This came out of 102B \$6975.90
1	SC #1 Structural Steel Repairs	Pending		103A				Based on T&M - center supports, scrapers, other - IPC Lydon. Orig \$20K
TOTAL					\$187,688.50			