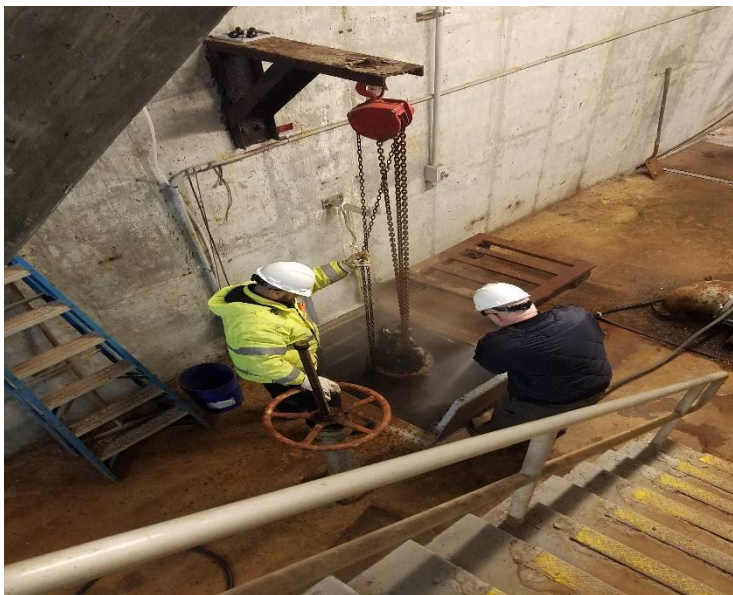




HULL WATER POLLUTION CONTROL FACILITY

**JANUARY
2022**

MONTHLY OPERATING REPORT



woodardcurran.com

COMMITMENT & INTEGRITY DRIVE RESULTS

NPDES NO. MA0101231

Table of Contents

1	Executive Summary	3
2	Flows and Loadings.....	4
a.	Average effluent monthly flows – 2+ year comparison	5
b.	Two Month Summary of Rainfall and the Influence on Effluent Flows	6
3	Compliance	7
4	Key Performance Indicators	11
a.	Water Quality – January 2022	11
5	Odor Control	14
6	Maintenance Summary	17
a.	Tasks Completed this Month	17
b.	Asset Management Accounts	20
6	Safety.....	21
7	Staff Development.....	22
8	Collection System	23
a.	Wet Well Cleaning	23
b.	Collection System Maintenance	23
9	Project Management & Administration.....	25
a.	On-Going Projects and Support Items	25

Cover pictures:

[top] W&C Utility truck hoist being used for the effluent pump removal from pump room

[bottom] W&C rigging in & out of effluent pump #2 from the wet well.

1 EXECUTIVE SUMMARY

This Monthly Operating Report provides a summary of the pertinent information and activities that occurred at Hull WPCF during the month of January 2022.

- No lost-time incidents for the month of January
- The Winter Blizzard named “Storm Bobby” hit Hull in the early morning hours on Saturday January 29th. The plant was prepared for the event and staffed overnight until the normally scheduled Sunday crew arrived. The high winds caused an ice build-up and knocked out the fuses supplying power to the plant at 8am on 1/29. The emergency generator ran for 26 hours without issue.
- Continuing Covid-19 safety operations, adhering to W&C and CDC guidelines and updates. Staffing levels were normal as it pertains to Covid19. Ongoing mask use per town mandate.
- There were **148** effluent samples taken in the month of January [details on page (12).] All effluent samples collected were compliant. Process conditions were stable.
- There were no Sanitary System Overflows [SSO] reported.
- A new effluent submersible pump [unit #2] was installed to replace failed unit.
- Radio project update: Installation of antennas and cables at the pump stations commenced in mid-January.
- The plant and collection system odors remained low, due to the two rain events that caused higher flows. Seasonally low sewage temperatures also contributed to the low levels seen. Remote monitoring with the Vapor-Link to monitor H2S levels continued.
- The Asset Management Accounts summaries for contract year #7 is attached. Latest revision date: 4/4/22.
- There were five grinder pump calls in January.
- W&C O&M continued efforts to support the various engineering projects. See ongoing projects section.
- Weekly Bio Bot, Covid-19 wastewater sampling & monitoring program continues by Brian Kiley, HSD and WC staff assisting where needed.

Woodard & Curran strives to deliver a high-quality operations service and is responsive to our customers concerns. Please feel free to request any modifications to the format or content of this report.

2 FLOWS AND LOADINGS



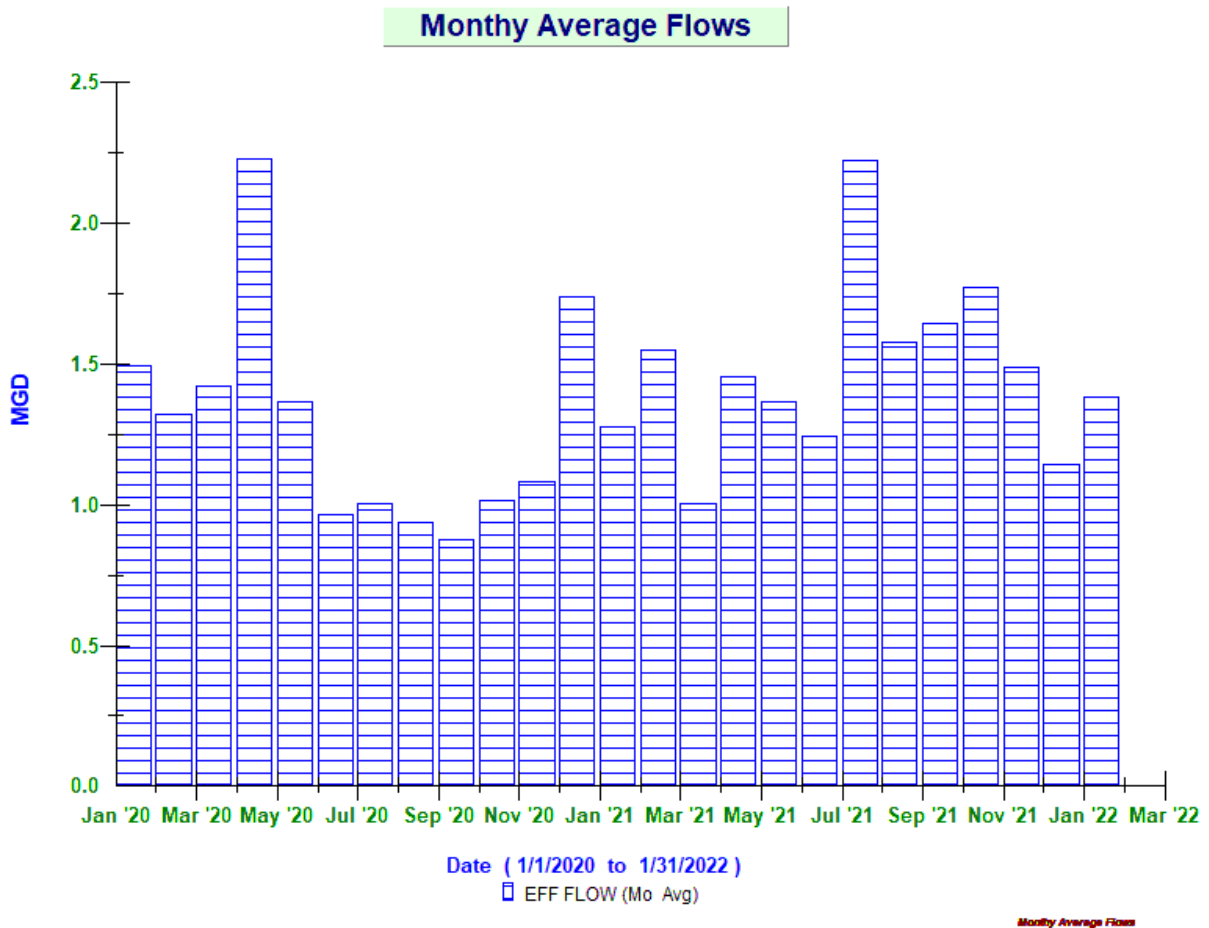
Average Daily Flows and Loadings for the Month: January

Year	Eff Flow	Inf Flow	Inf BOD	Inf TSS	Eff BOD	EFF TSS
	MGD	MDG	LBS	LBS	LBS	LBS
2020	1.288	1.491	1,667	2,906	55	139
2021	1.478	1.581	2,324	3,385	69	120
2022	1.545	1.629	1,394	1,628	59	110

* On-Going -The existing influent flow meters are strap-on doppler flow meters, and the existing pipe condition prevents getting a strong signal. An area velocity meter in the aeration tank inlet channel is used as well as the headworks influent Parshall Flume meter to monitor influent flows. All reported loadings are based on the effluent flow meter [new mag meter April 2021]. All meters are tied into the Scada system so that influent flows can be monitored.

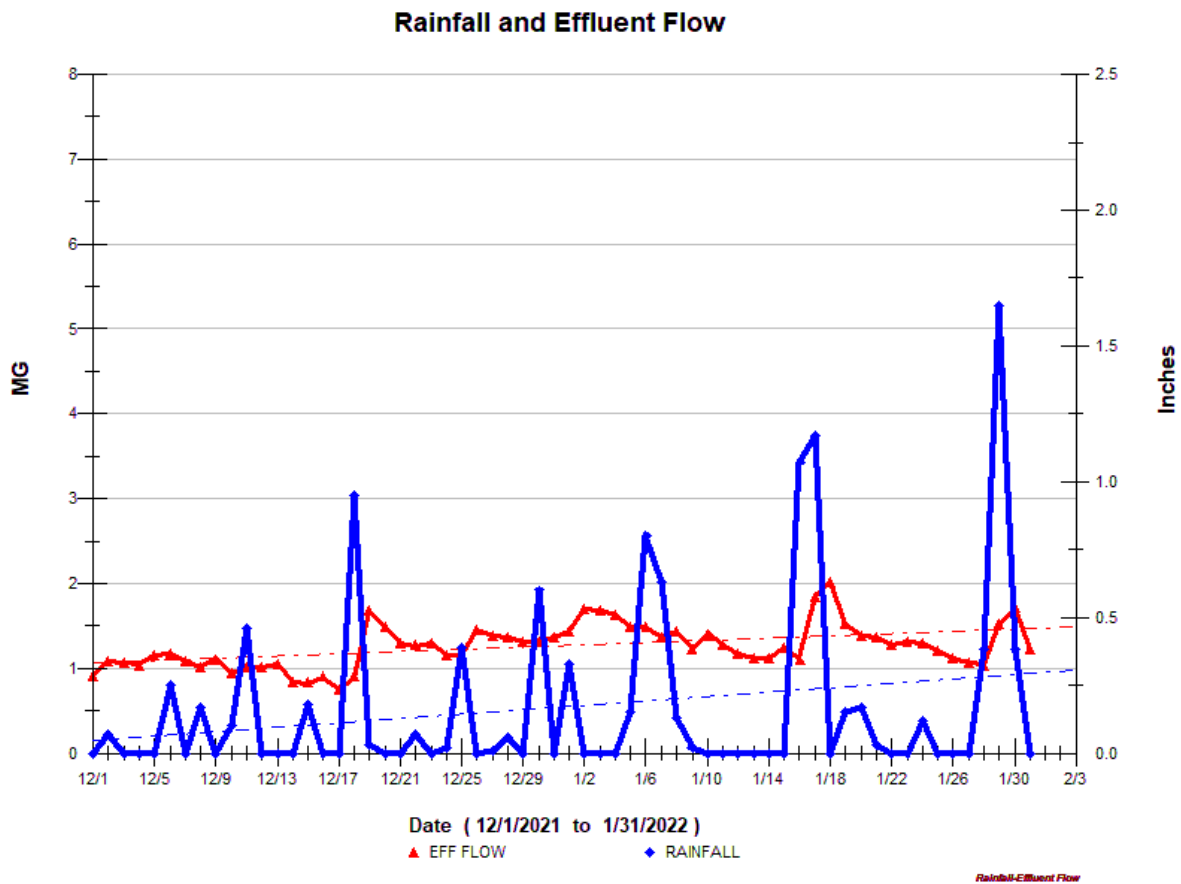
** No influent flow since headworks area was bypassed for concrete rehabilitation project.

A. AVERAGE EFFLUENT MONTHLY FLOWS – 2+ YEAR COMPARISON



The monthly average flow for January was 1.39 MGD, slightly higher than the previous month. The total precipitation for the month was 7.18 inches, about 4 inches more than previous month, with a peak of 2.4+ inches of rain on 1/28-1/30. The graph shows the 2-plus year summary of the monthly average flows.

B. TWO MONTH SUMMARY OF RAINFALL AND THE INFLUENCE ON EFFLUENT FLOWS



This graph shows the days where precipitation occurred [rainfall] [Blue Peaks]. This graph shows an upward trend in flows due to the wet conditions.

3 COMPLIANCE



➤ Plant Effluent

There were no permit exceedances in January.

- Plant process conditions were stable during the month. The current process tank configuration is two diffused aeration tanks #1 & #3. The moderate flow spikes seen because of seasonal wet weather were managed without any issues. Aeration mode changed to “timed” mode, due to colder temperatures, and excessively high oxygen levels in aeration tanks.

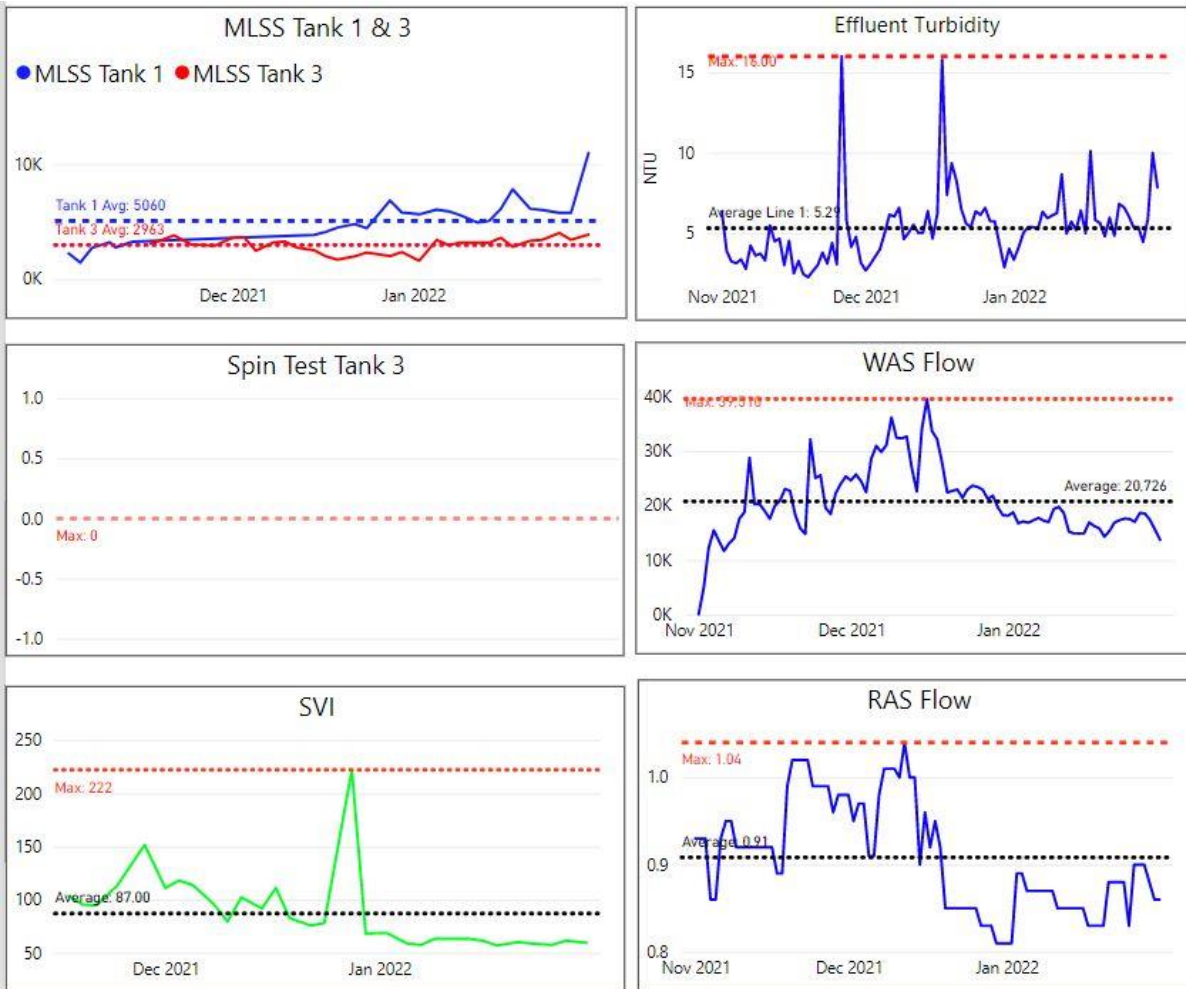


- A Copy of the monthly NPDES reports for January 2022 submitted to the EPA & DEP and then sent to the Hull Sewer Dept.
- Kristina Richards (W&C) was onsite January 26 for the plant’s 5-year renewal of EPA NET MSGP “No Exposure” compliance assessment and the annual EPCRA Tier II filing that pertains to onsite hazardous chemicals [plant & PS 3]. Draft reports completed.
- Contract lab for WET testing – Enthalpy Analytical shutting down, therefore a search initiated for new lab to perform the quarterly toxicity testing.
- Responded to Marine Fisheries inquiry after the late month January storm. No issues to report.



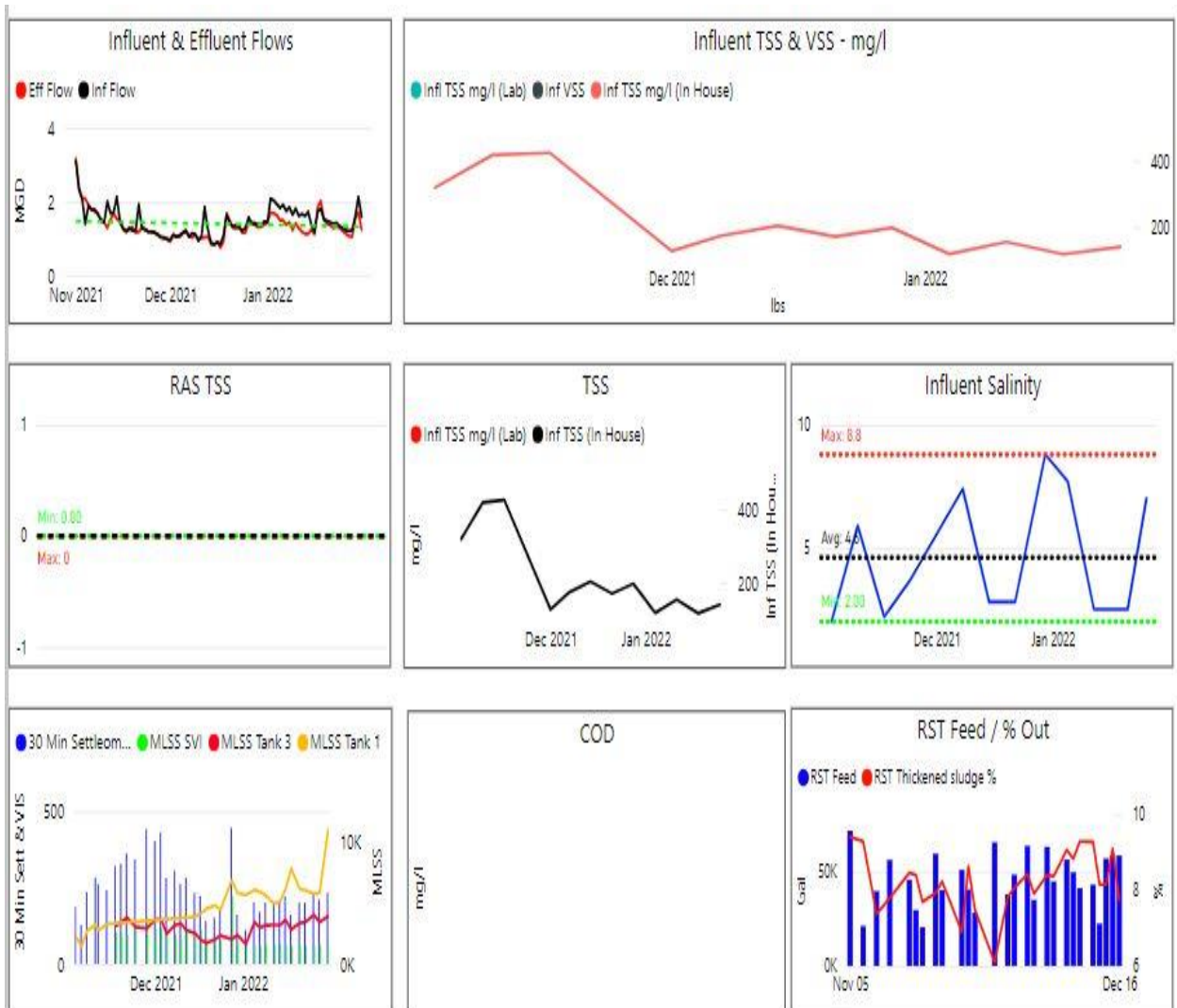
Monthly Process Summary graphs from power BI – January 2022.

SECONDARY PROCESSES – POWER BI GRAPHS



3-month period ending on 1/31/22. The tank solids levels under aeration showed some increase, in part due to recent process aeration tank changes and flows. WAS rates had been increased in December.

Additional Power BI Graphs showing trends of various processes – January 2022.



4 KEY PERFORMANCE INDICATORS

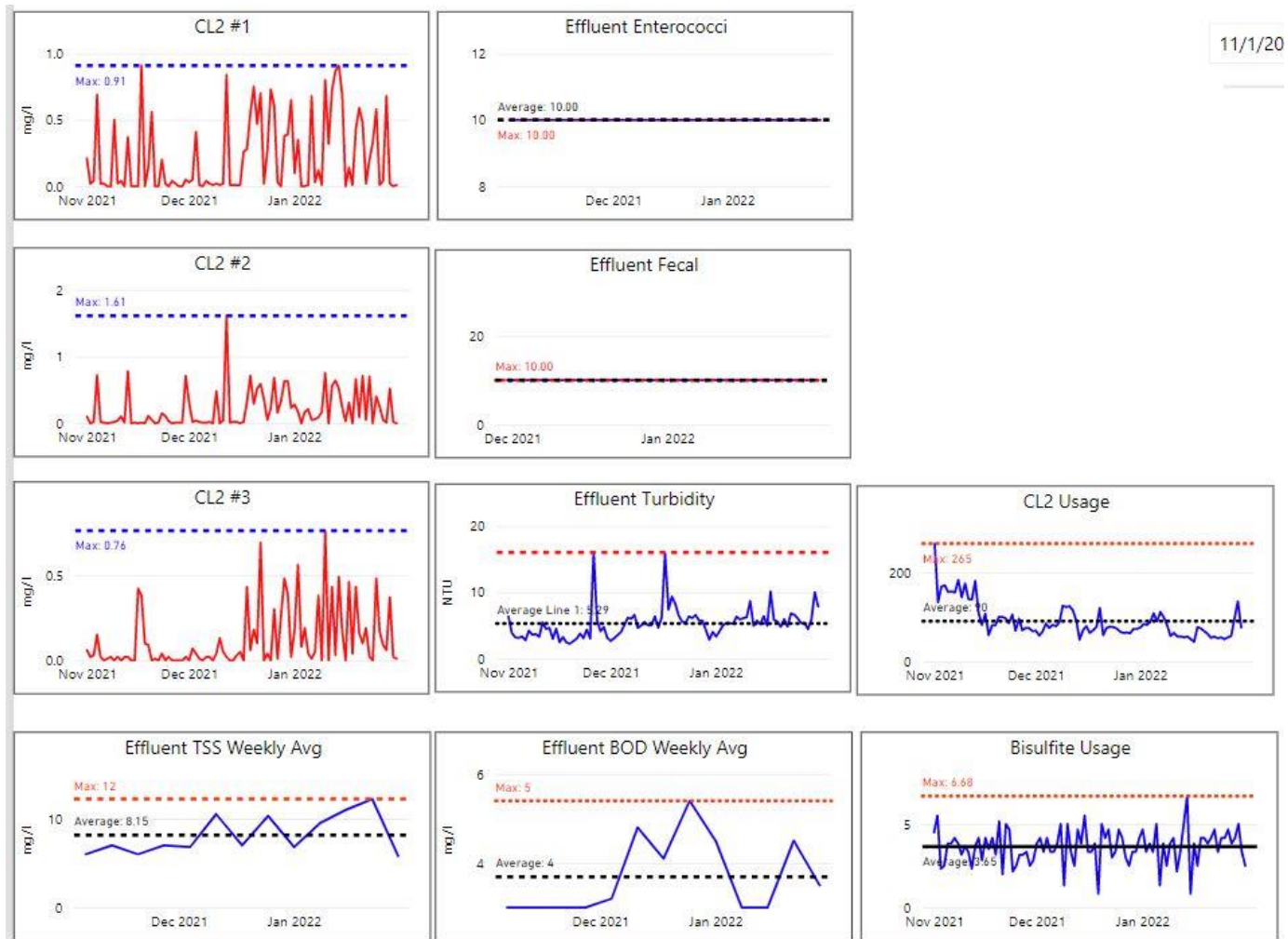


A. WATER QUALITY – JANUARY 2022

Parameter Info		Permit Requirements					Results				
Parameter	Units	Daily Allowed Max in month	Min %	Weekly Avg. Max Allowed in month	Monthly Avg	Freq	Period Monthly Avg.	Period Weekly Min	Period Daily Max	# Of Samples	# Of Violations
Eff TSS	MG/L	50		45	30	1 X Week	9.6	5.8	12.2	4	0
Eff TSS	LBS			1152	768	1 X Week	127.5	58.0	205.5		0
% TSS Rem	%		85			1 X Month	92.7				0
Eff BOD	MG/L	50		45	30	1 X Week	3.5	3.0	4.5	4	0
Eff BOD	LBS			1152	768	1 X Week	45.9	32.0	75.8		0
% BOD Rem	%		85			1 X Month	97.0				0
Eff Chlorine	MG/L	1.0			0.7	3 X Day	0.25	0.01	0.77	93	0
Eff Fecal	#/100 ML	260			88	1 X Week	10	10	10	4	0
Eff pH	SU	8.5	6.5			1X Daily	6.9	6.6	7.5	31	0
Enterococci	CFU/100 ML	276			35	1 X Week	10	10	10	4	0

There were **148** effluent samples taken in January.

EFFLUENT COMPLIANCE POWER BI GRAPHS

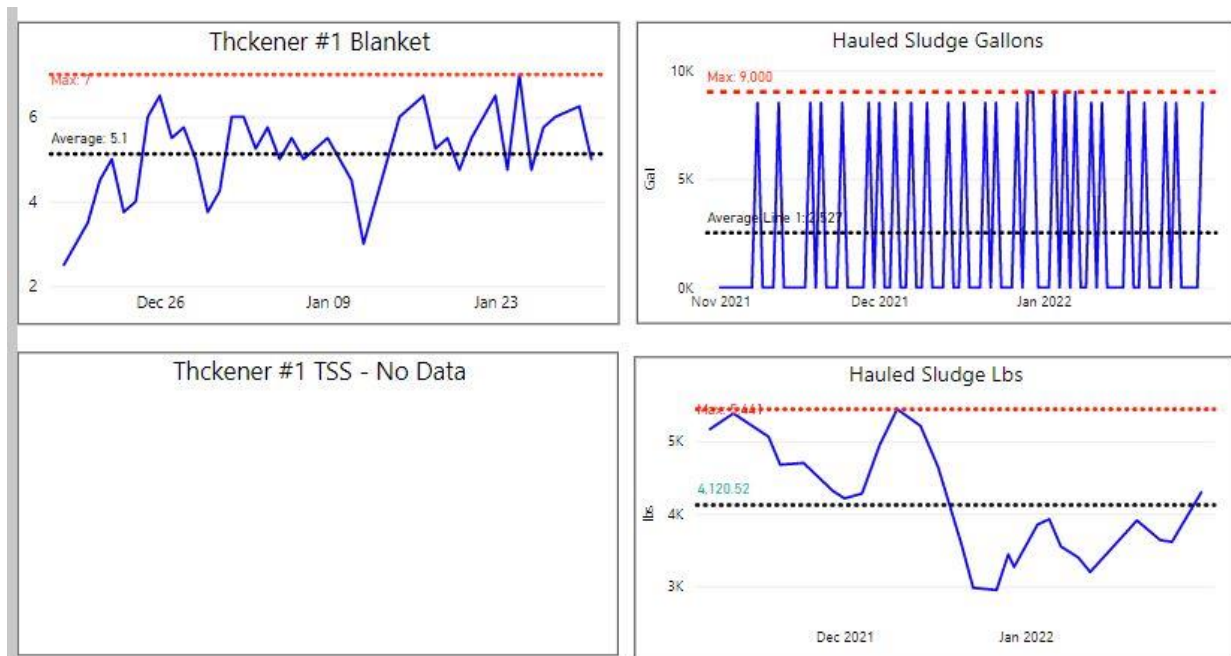


Last 3-month period ending on 1/31/22 - chlorine residuals, effluent compliance, & chemical use. Bleach [sodium hypochlorite] & sodium bisulfite fluctuating, due to flow variability. Turbidity [clarity] of the effluent was stable, but also influenced by fluctuating flows. Effluent quality still very good.

Sewage Gallons Treated vs Sludge Disposed

Month	Effluent Treated, MG	Sludge Disposed, Gals
January 2019	46.34	132,000
January 2020	39.64	104,500
January 2021	42.83	87,000

Additional Power BI graphs for sludge solids for 3-month period ending 1/31/22. Trends indicate slightly less sludge production.

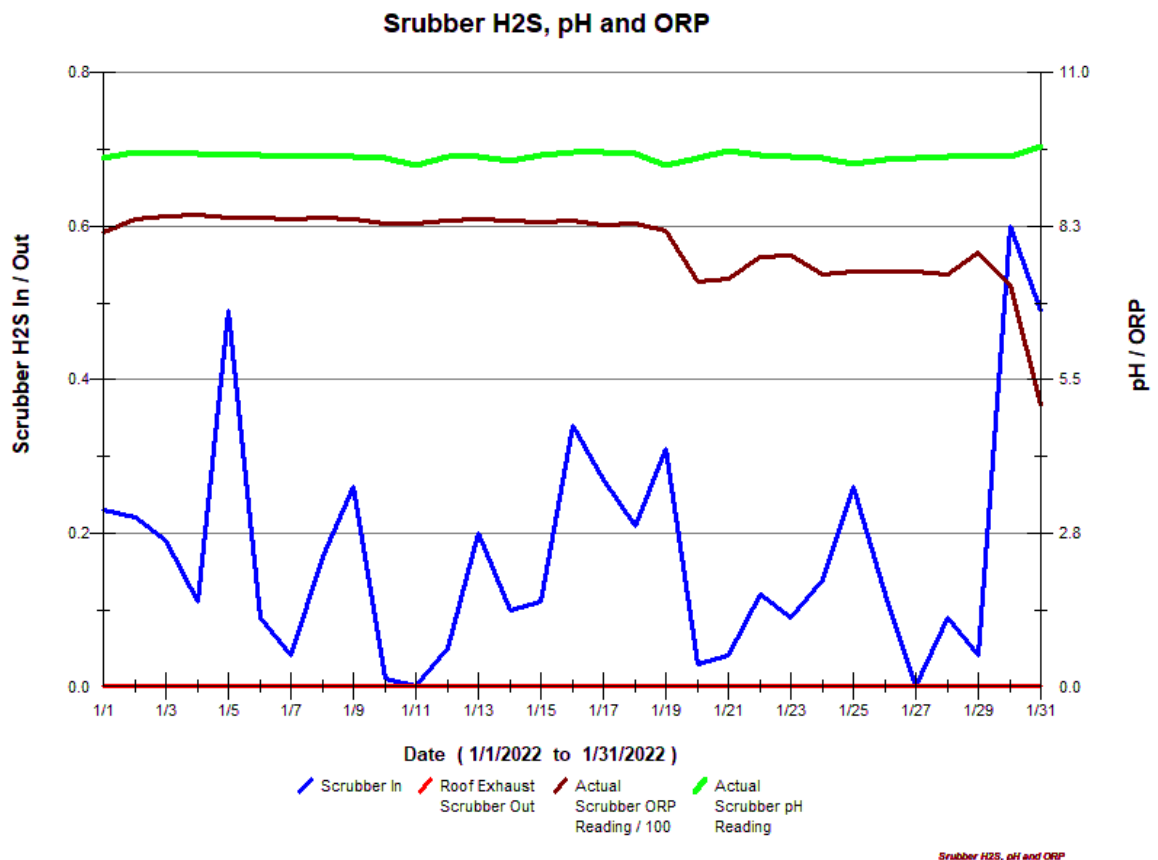


5 ODOR CONTROL

There were no odor complaint calls received during January for the wastewater plant.

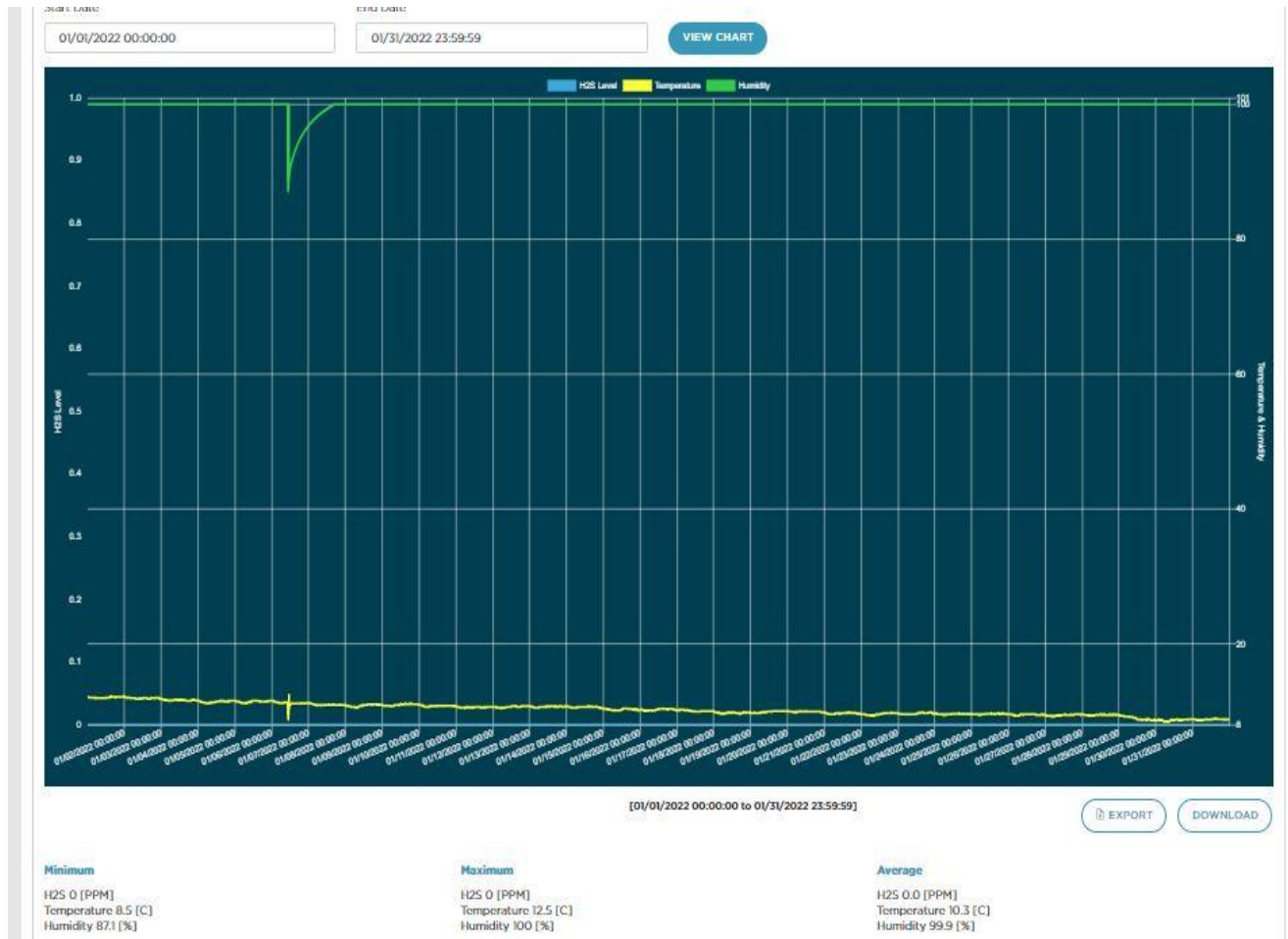
The Bioxide system was on, and the feed rates were low. There were adjustments made as needed according to data seen at Nantasket/Water MH and XYZ/Nantasket MH. The monthly graphs are attached below. Daily average Bioxide use for January was 17 gallons per day.

- “In-Pipe” bacteria – monthly changeouts completed on 1/24. No bi-monthly changeouts done for the three locations.
- No changes: on pump station mixing systems/aerators.
- No changes - Hydrogen sulfide (H₂S) monitoring units were recording and trending on the odor scrubber. [inlet and outlet]. See graph below
- Evoqua Technician in for VL [Vapor Link] meter recalibration.



[pictured below: Scrubber trend and trending graphs for H2S levels recorded from the vapor link system cellular at XYZ Street/Nantasket Ave and Nantasket Ave/Water Street manholes.

XYZ – Nantasket Ave [closest to plant]



The odor data logging unit at XYZ monitoring the overall H2S levels close to the plant. ZERO H2S present. No spikes seen during the month.

Nantasket Ave/Water Street [at end of PS 3 force main and PS 4 discharge]



Pump station #3 - H2S is monitored at the end of the force main at the MH at Nantasket Ave & Water Street. Bioxide is added to allow for any excess nitrate concentration in the sewage system to treat the additional H2S added from other parts of the system – such as PS #4, contributions from lines feeding the interceptor, PS #5, PS #6, PS #9, Spinnaker Island, etc. all the way into the plant.

6 MAINTENANCE SUMMARY

A. TASKS COMPLETED THIS MONTH

The SEMS monthly work order summary for January is attached for review.

Additional key items of note are listed below:

- Effluent pump #2 was replaced with a new unit. W&C Staff performed the pump replacement and Hi-Voltage Associates & Fellow Electrical performed the electrical hook ups and testing. [pictured: new pump to be installed and old pump being removed]. The failed pump was sent out for an evaluation.



- Ongoing lighting repairs to various locations – ballasts and bulbs & other electrical needs – Ops building, bisulfite shed. Completed by Hi-Voltage.
- Work with SCADA tech to get moisture & thermal overload protection circuits into SCADA program for the effluent pumps. Previously had not been connected in.
- The winter storm that took place on 1/29-1/30 caused the main line fuses to freeze up and “open”, and this led to a power failure at the wastewater plant. The HMLP department assessed and could not repair the issue until after the high wind period and sub-zero temperatures had passed. This was on the following morning, Sunday 1/30. As the sun rose and the temperatures moderated, the frozen components were thawed out and the main line was re-fused. Power was returned to the facility by mid-morning. [pictured: the frozen electrical lines on 1/29, and ongoing repairs on 1/30]. There were no power losses at any of the pump stations, and plant flows did not rise significantly, since the tidal surge was lower than predicted. Precipitation amounts were also lower than predicted, as the air temperatures were low and freezing rain conditions prevailed.



- W&C provided assistance to the HSD office trailer to dig up and thaw the trailer's sewer line that had become frozen. A portable heater was set up under a constructed shelter to thaw the line, and then the sewer line was then wrapped with insulation and covered with insulated construction blankets. The influent manhole [right-side picture] was also insulated/wrapped, since extremely cold air was being drawn in.



- A clamp connecting the center well and skimmer arm on Primary Clarifier 2 became loose. Lydon Millwrights were called back into complete the repair. They were able to perform the work, while the tank was still in service. Proper safety protocols were followed.



- On 1/26 during the storm preparation for the upcoming winter storm, the generator at Pump Station #6 failed to run, due to a failed photo-optic sensor. Since the part was not stocked, nor readily available for a few weeks, a rental unit supplied by Sunbelt Rentals was set up at the pump station and wired into the existing electrical transfer switch by South Shore Generator and Fellows Electrical Systems. The rental unit remained in place, until the repairs could be completed.



B. ASSET MANAGEMENT ACCOUNTS

- Please see the attached summary totals and planned expenditures for the Asset Management accounts for contract year (7). Most recent through **4/4/22**.
- Planned expenditure list updated, especially being close to end of contract year. Monthly review & update. Some costs that are delayed, removed as the costs will post in year #8.

6 SAFETY



It is Woodard & Curran's policy to maintain a safe and healthy work environment for every employee and to comply with all applicable occupational health & safety regulations.

- No lost time incidents reported for January
- Monthly PM's - Emergency eyewash and shower inspections, fire extinguishers, and emergency lighting inspections completed.
- Monthly calibrations performed on all MX4 & Max XT11 gas meters
- On-going Coronavirus Covid-19 awareness and updates- daily reviews & as needed. Discuss covid protocol changes, site specific safety policies for sub-contractors, and safety tailgate meetings. Pure Safety topic for January was Hearing Conservation.
- Monthly W&C staff safety meeting conducted on 1/27/22. Major topics discussed: Emergency Action Plan updated, use of fire extinguishers, use of hand tools.
- Annual fire extinguisher inspection performed by Plymouth County Fire Ext. service.

7 STAFF DEVELOPMENT

Training is an important part of any operation to ensure employee health and safety is assured, quality standards are supported, staff skills are improved, career opportunities become available, and higher productivity is achieved.

Listed is a general outline of training that the staff received over the course of the month:

- Monthly staff Safety training completed – Pure Safety and monthly safety meeting. Review W&C’s “near-miss” incidents at all W&C projects for month of December.
- Regular (usually daily) operational updates and process control discussions, pump station operations, especially with construction projects going on at the plant. Safety Covid-19, dig-safes, etc.
- Training webinar on SSO [Sanitary System Overflow] reporting changes with MADEP – MS attended
- Training webinar on Tier II filing with MADEP – MS attended.
- Training webinar for annual sludge reporting by USEPA – MS & AV attended

Staffing related items:

- The regular staffing labor was primarily supplemented by O&M Specialist Paul Horigan, who sometimes covers the added shift left open by Aram V, and any other maintenance project needs as needed.
- Continued to have Saturday & Sunday staff coverage supplemented with part-time staff. Sunday licensed coverage rotation continued with Aram, Roger, Mike, and Joe.
- Intern Joel Terrio continued in a part-time capacity working Saturdays & Sundays and weekdays when he was off from school. This arrangement allows for the regular staff to be on site more during the week.
- In January, the staffing levels were not affected due to the ongoing Covid-19 virus pandemic.

8 COLLECTION SYSTEM

A. WET WELL CLEANING

The actual schedule for wet well cleaning: May 2021 to April 2022:

(X-Cleaned) - (Orange – Inspected) - (Green – See notes) - (blank – no work done)

Frequency of cleaning	Pump Station							
	A	1	3	4	5	6	9	D
May, 2021								
June, 2021	X							
July, 2021								
Aug., 2021	X			X				
Sept. 2021								
Oct., 2021								
Nov, 2021								
Dec., 2021								
Jan., 2022								
Feb., 2022								
March 2022								
April 2022								

All pump stations except for Pump Station 3 and Station D have an aerator/mixer in the wet wells.

B. COLLECTION SYSTEM MAINTENANCE

Collection system work is being documented and tracked in Utility Cloud and a summarized report for October has been included as an attachment with the Monthly Operating Report.

Woodard & Curran assisted/conducted camera work and sewer system support in the Hull collection system at the following areas during the month of November. Ongoing backup and blockage call outs requiring an increase in labor and time to support. Below summarizes W&C's efforts at the various call out locations.

- 1/2 - check area flooding by PS #4 due to high tide conditions – flooding Marginal Rd area.
- 1/4 - PS #5 pump #2 showing flow when off- SCADA issue W&C Steve Rose corrected
- 1/13 - PS #1 pump #1 low output detected - cleared of debris- broken shovel handle found stuck in suction elbow
- 1/14 - New Apple tablet put in service for UC, etc.
- 1/7 – backup reported at 387 Nantasket Ave, check manholes and verify line is flowing freely.
- 1/18 – Emergency dig safe after hours call to 32 Porazzo Rd.

- In-Pipe units – ongoing maintenance of the dosing units as needed. Staff conducted board troubleshooting, dosing pump repairs, and replacements as needed.
- Pump station emergency generator runs completed- weekly no load and monthly loaded runs.
- All Pump station wet wells were inspected in January. Monthly Pump Station Inspections are completed and combined with monthly station PM's.
- Upload new/updated tie-cards to the UC as required.
- Grinder pump summary:
 - Jan 16: 96 Salisbury,
 - Jan 16: 96 N Truro
 - Jan 17: 18 Rockview Rd
 - Jan 19: 145 N. Truro
 - Jan 20 & 31: return visits to 96 Salisbury (possible frozen discharge line, and will evaluate when warmer temperatures return)
- On-going Dig-Safe mark outs. These are completed throughout the Town of Hull to assist/facilitate scheduled and emergency gas repairs, broken water mains, upcoming roadway paving projects, and other residential and town projects and are listed in the UC summary.

9 PROJECT MANAGEMENT & ADMINISTRATION



A. ON-GOING PROJECTS AND SUPPORT ITEMS

January updates:

- Due to the unpredictable and severe weather that can occur during the month of January, there were several periods where additional preparations and monitoring were needed to ensure plant operations.
 - High tides and flood advisories during first week of January that influenced plant flows
 - A number of sub-freezing days that caused for freezing conditions in the operations building due to lack of central heating system
 - Heavy rain event in morning – 1/17, coastal flood watch concerns
 - Winter storm/blizzard on 1/29 – a number of storm preparedness meetings and responses due to the changing weather conditions. Staffing and resources planned for round-the-clock coverage and plant/pump station monitoring. Additional staff brought in and housed locally ahead of the storm. All generators run/tested. Electricians remained on call in the event needed. Additional portable pump set up a Primary D-Box. Maintained communication with the HSD and HMLP on electrical status and when the main line could be “re-fused”
- Ongoing work in many areas of the operations building in anticipation for the HVAC project start. Moving, and consolidating items, preparing obsolete items for proper disposal, old paints, and documentation and records management, etc.
- W&C O&M working with engineer and D&C construction for hypochlorite storage tank replacement and containment issues plan.
- W&C worked with the HSD and assisted Vortex/Ted Berry crew on 1/18-1/20 Vortex for the PS #9 force main isolation, so that an assessment could be done to assess a section of concern in the force main behind 53 Harborview Road. A collapse of the embankment had occurred a few months

prior. Two long days of support assistance were provided while the pump station was offline during the day to maintain the wet well, oversee the pump and haul operation, draining of the force main, and then return of the station to service. The intent and scope of the project was as follows:

- Draining to determine if pipe is watertight
 - Cleaning to evaluate how much material has accumulated over the pipe's life by use of foam sealing and gauging "pigs" that are pulled through the pipe using air
 - Inspection through use of a CCTV pan-tilt camera to determine what the inside of the pipe looked like and if repairs needed and remove any loose accumulation of debris and biological build-up
- Continued to help and support of engineering projects with review and feedback provided – PS9, secondary& influent systems upgrade project, aeration tanks, bypass options during the upgrade, PS 4 pumps, energy grants & funding, and capital planning.
- An introductory meeting was held at the plant with all upcoming HVAC project engineers, contractors, sub-contractors, W&C, and Hull Sewer Department was held on Jan 28th.
- Radio Communications Project Update – started installation of radio antennas and related equipment at each of the pump stations. Weather related temperatures and precipitation contributed to some delays.
- Continued efforts to solicit a new generator service provider and selected South Shore Generator [SSGEN]. Their quick response to the facility's immediate needs is to be commended.
- Finalized quotes for a new sound attenuated 6" trailer mounted trash pump. Expected to place order soon with Thompson Pump. On-going maintenance to install a new control panel on one of the older 6" pumps.

Asset Management Accounts - Year 7							
	FOR January M.O.R.	Actual to date			Projected for Final Estimate		
Account		Budgeted Amount	Spent to Date	Delta	Projected costs and incl PO's	Final est	Delta
07M-101A	Preventive Maint	\$213,028.73	\$128,442.13	\$84,586.60	\$5,700.00	\$134,142.13	\$78,886.60
07M-102B	Capital and Major Repairs	\$140,000.00	\$151,180.04	(\$11,180.04)	\$25,000.00	\$176,180.04	(\$36,180.04)
07M-103A	Major Sub Contractors	\$180,465.81	\$239,593.90	(\$59,128.09)	\$6,500.00	\$246,093.90	(\$65,628.09)
blank							
	Asset Management	\$533,494.54	\$519,216.07	\$14,278.47	\$37,200.00	\$556,416.07	(\$22,921.53)

\$14,278.47

Budget expended	Time Status	
	NOW=	4/4/2022
	Start	5/1/2020
60.3%	192.8%	132.5%
108.0%	192.8%	84.8%
132.8%	192.8%	60.0%
97.3%	192.8%	95.5%

07S	D Street	\$7,500.00	\$4,793.84	\$2,706.16	\$0.00	\$4,793.84	\$2,706.16
-----	----------	------------	------------	------------	--------	------------	------------

63.9%	192.8%	128.9%
-------	--------	--------

07C	Odor Control Chemicals	\$100,000.00	\$83,882.68	\$16,117.32	\$0.00	\$83,882.68	\$16,117.32
-----	------------------------	--------------	-------------	-------------	--------	-------------	-------------

83.9%	192.8%	108.9%
-------	--------	--------

Estimated total
remaining 07M,
07C (\$6,804.21)

Hull 2021-2022 - 07M Projects, Tasks, and Needs - (AV)								
Maintenance Account - Year 7 - 05_01_21 to 04_30_22								
FOR JANUARY 2021 MOR					\$37,200.00			4/4/2022 15:19
Priority [1=high]	Description	Status	completed	Task	Estimates & funds remaining	Final Completed Cost	Lead	Comments
1	Mechanical Work Labor by O&M specialists	On Going		101A				Jody St. George, Paul Horigan & WC Support Staff - Total budget \$25,000; incl annual scrubber cleaning, remove old blowers [mech];other items as needed. Adj budget down to \$9,000 - 11/22. Adjust 12/19;adj placeholder \$\$ 1/3/22; adj to zero 2/8/22
1	Pump and Motor Repairs [invoiced and pcard]	On Going		101A				to keep existing equipment running - utilize various outside contractor repair shops, new purchases. orig budget \$20,000; adjust to 6000 11/22, adjust on 2/8/22 ; adjust to zero 4/4/22
1	Lubricants	On Going		101A				Various Suppliers for oil and grease. Budgeted \$3500. delete \$\$ on 2/2 & move to gen repairs
1	Generator Repairs	On Going		101A				General Repair Work - Original Placeholder \$3,000; pending invoice for water solenoed main gen oct 2020; Adj 11/22 to \$2000. Will have rental \$\$, and repair \$\$ for PS6 generator. Main Gen #2 also eval-repairs. Budget at \$3,500. 3/8- Incl with PO issued to SSGen
1	Fire Alarm Inspections and Service	On Going		101A				Semi Annual - Hart Security [October & April , central station, & Service]Orig budget \$3000. Adjust to zero 4/4/22
2	Universal waste disposal	Pending		101A				Placeholder - \$500; zero the budget, will incur if needed. Veolia ES in for January services.
1	Service the Forklift	Pending		101A	\$400.00			Placeholder \$400 - Annual cost - outside vendor
1	Overhead Hoist Inspection	Pending		101A	\$1,500.00			Annual task - Applied Dynamics - PO is usually issued for April. \$1500
1	Flow meter verification and calibration	Pending		101A	\$1,000.00			Placeholder - Annual - Ray Ferland 1 visit annually [orig budget \$1,000];
1	Facility Building - Roof Inspection	Pending		101A	\$2,800.00			\$2800 Annual Placeholder - Established contract with Tecta America. Spril 2022 services may be delayed due to HVAC project
1	Pump Station #9 - Repairs Immediate	completed		101A		\$6,900.00		Costs from D&C to be charged to budget Oct 2021
2	Jerome H2S Meter Inspection	Pending		101A				\$1100 - Placeholder for Annual Inspection - sent out includes annual service \$1100; not done in year #6 [remove placeholder 10/25
1	Janitorial Supplies	On Going		101A				Estimated annual expenditures - Orig budget \$4,000; adj 12/19;adj to \$1,000 on 2/2/22
1	Manhole Inspections	Pending		101A				As required,and/or scheduled
2	General mechanical and electrical items/supplies	On Going		101A				Grainger, FWWebb, EJP,Hoadley, McMasterCarr, etc; orig budget \$18,000, adjust to \$9,000 on 10/20; adjust to 6500 on 11/22; adj 12/19 to \$5000; adj to \$2000 on 2/2/22. Zero out on 3/8.
1	IR Survey	completed		101A				Done in 2021 [September]
2	Hoses	completed		101A				Replacements and/or Service - On-Going - As Needed; Purchased three 6-inch hoses, close out budget Oct 2021
1	Replace UPS batteries - plant and pump stations & town trailer	completed		101A				in process - started Oct 2021; Readjust budget to \$4,500.on 11/22. Completed 12/19
1	Spare A-C pump rotating assembly repair	completed		101A		\$4,400.74		10/18 - currently in shop for repairs at Seacoast Supply. No PO issued. Repaired unit received back.

Hull 2021-2022 - 07M Projects, Tasks, and Needs - (AV)								
Maintenance Account - Year 7 - 05_01_21 to 04_30_22								
FOR JANUARY 2021 MOR					\$37,200.00			4/4/2022 15:19
Priority [1=high]	Description	Status	completed	Task	Estimates & funds remaining	Final Completed Cost	Lead	Comments
2	Misc. Materials	On Going		101A				Hardware Store - \$200.00 per month - reoccurring expense; orig budget \$2,400; Adjust to zero 4/4/22
4	Install a flow meter on the generator cooling water system - plant water	Pending		101A				Have an estimate [Oct 2018]; possible after 5/1/20
1	Lab Equip Calibration	completed		101A				Annual service \$600- usually Jan/Feb. Last done May 2021; process invoice Oct 2021
1	Mech seal[s] for RAS pumps ! & 2	completed		101A		\$4,648.39		P1 repairs in progress as of 10/1/21; estim cost \$5,000. No PO issued.
2	Tecta Roof Repairs - proposed per 2021 inspection	Pending		102B				TBD
2	yard hydrants - installation	Pending		102B				sub-contractor labor - pending; Have materials on hand. To be put on hold until spring 2022 [\$5,000] 2/2/22
1	Pump Station #4 - purchase two new pumps	Completed		102B				Cost: On a PO with MSI - # estim \$35,000 - by AEPump
1	Pump Station #4 - install new pumps	pending		102B				Most likely by D & C. 3/8 - Date pushed out to April & bill to hit in May ? - \$10,000
1	Effluent Pump #3 - repairs	On Going		102B	\$25,000.00			Currently the 60HP pump is at Flygt Repair shop - estimated repairs and new power cord - \$25,000; Pump still at shop - Dec 2021; No PO was issued. Parts due in for late March.
1	Sanitaire hardware purchase for aer tk 1	Completed		102B		\$12,776.00		Purchase more hardware - done June/July 2021 [not billed yet]
1	Additional Sanitaire hardware/equip needs	completed		102B		\$2,612.00		Additional 350 membrane diffusers for aeration tank #1 [ordered 10/19/21
3	Replace 6" potable water valve in basement and misc. valves	Pending		102B				While doing project check/replace 1 1/4 valves as needed - Requires a water shutdown, on hold until after HVAC project completed. Orig planned cost \$3,000.
2	New 6" portable trash pump - changed to new effluent P3 - Flowserve	On Going		102B				Purchase from either Sourcewell or other -best estimate: Update 2/8 to AquaSolutions - purchase of new effluent pump #3 - 60HP pump. On an issued PO 104175.
1	New Effluent Flygt Pump #4	completed		102B				20 HP pump ordered October 2021. on a PO Estim cost: \$17,000 plus freight
3	New 4-inch valves for pri building between the tanks Installation	Pending		102B				Valves - cost: \$2500, sub-contracted labor - either WC or outside co.\$4,000 - totl estim \$6,500
3	Odor log data loggers & calibr kit	Pending		102B				Current units obsolete and not supported by company, possibly look at under 05C if funds avail; remove the \$6,000 on 2/6/20 - 06C or 06M
3	Jerome meter replacement	Pending		102B				replace unit, if done \$11,000
3	Gravity Thickener #1 sandblasting/painting	Pending		102B				Estimate \$45,000+ - would need to go out for competitive bid request, Target late spring/early summer 2022 ?
2 of 42	4/4/2022 AUMA spare electric actuator	Pending		102B	2020_05_01_07M_Checkbook_YTD draft			one spae unit, for inventory - Quoted by A&N. PO requested.& on order.#103652 07M Planned Costs

Hull 2021-2022 - 07M Projects, Tasks, and Needs - (AV)								
Maintenance Account - Year 7 - 05_01_21 to 04_30_22								
FOR JANUARY 2021 MOR					\$37,200.00			4/4/2022 15:19
Priority [1=high]	Description	Status	completed	Task	Estimates & funds remaining	Final Completed Cost	Lead	Comments
1	Grit classifier system parts	On Going		102B				No spare parts - tail shft housing, tail shaft, bushing, retainer plate, etc.Estimate from DGMarshall, HE Moore and Envirodyne. Parts purchasing initiated Dec 2021. Estimated total \$9,000
2	Replacement Pumps LS A	Pending		102B				Pump efficiency lower than desired - new pumps may be needed. Estimate ?
1	Electrical Work	On Going		103A				Electricians: Glen Fellows, HiVoltage, other; remv old blowers.lighting, sec bldg elec outlets - \$2,000/month; orig budget \$25,000; adjust down to \$4,000. Adjust down & zero out on 12/19.
1	SCADA Work	On Going		103A	\$2,500.00			Steve Rose and the SCADA Support Team; orig budget \$25,000; adj Dec 2021. Adjust budget remaining from 11K down to 6K; adjust budget down 2/8/22 to - \$2,500
1	E-One Repairs and Replacement	On Going		103A				Based on historical costs. E1 repairs where cost-effective & new replacement pumps; control panels, other equip; Orig budget \$25,000; More replacement pumps versus repairs. Reduce budget to 15K on 10/6; adj to 12K on 10/25; Adjust budget on 11/22 to \$3000. Adjust budget to Zero 12/19. 1/2/22 YTD costs \$28K. 2/2/22 - ongoing repairs & increased costs.
1	Annual Generator inspection	On Going		103A				placeholder 2021 Annual \$4,900 - MSElectrical Power - Generator PM/Service work - due in November, Early Dec target completion. 2/2/22 New Contractor will be in place for 2022. SSGEn - incl with PO issued to SSGEn
1	Automatic Transfer Switch inspection and servicing	Pending		103A				\$2400 - Annual Service planned for April Highland Power - NETS - Transfer Switch; Part of Gen Svc PO. Maypush this to after May 1st 2022 [2/2/22]
1	Wetwell Inspections and Cleaning - Plant/Pump Stations	On Going		103A				As required, plant or pump stations; orig budget \$10,000; adj 12/19 down to \$5000. 3/8 - adj placeholder down to \$3,000. Adjust to zero [4/4/22]
1	Sewer Line Cleaning - Emergencies	On Going		103A	\$4,000.00			Placeholder - As required for various sub-contractors; could be Hoadley, Truax, WindRiver, BMC, or other, collection system & plant; orig budget \$10,000; adj budget down to \$5,000 10/20; adjust down 1/3/22;
1	Collection System and plant - emerg & unplanned calls - Jetting & CCTV work - various contractors	On Going		103A				Budget - 15,000, adj down to 10K on 10/20; Reverse budget to Zero after PS9 Pump & Haul in January for FM evaluation. [2/2/22]
1	Mersino 6" pump rental	On Going		103A				approx \$2600 per month; adj budget down due to payments 11/22; adj 12/19
1	Aer tank repairs [labor] through September	completed		103A				4 days - millwrights - Lydon \$8000
2	Aer tank repairs [labor] for diffuser membrane replacement	completed		103A		\$1,952.92		2 days - millwrights - Lydon \$6300; Aeration tank #3, aeration tank #1
3	Regen Aeration System - Pump Station #5	Pending		103A				Orig est \$1,500 -Tie into the SCADA system - Glen Fellows; .
3	SHT1 - demo of equip, air piping & diffuser install/materials	Pending		103A				demo concrete in tank - \$15,000 - sub-contractor and installation of new equip -additional new equip \$6,000; air piping to the tank \$10,000; Total estimate: \$31,000. Maybe year 8M project ?
4	Generators - Load Bank Testing Plant & Pump Stations	Pending		103A				Look at under 08M - recently done under 06M.
1	EESCO electrical MCC work - plant	completed		103A		\$10,235.00		In progress as of September 2021, and to be completed October 2021
1	EESCO MCC work at the Pump Stations	Pending		103A				TBD quoted for Oct/Nov 2021
1	Low pressure sewer valve box insp & mtce	Pending		103A				placeholder for contractoror O&M inspections and potential repairs; Looking at Rosano-Davis or another contractor & W&C to investigate; budget of \$7,500 on hold
1	LS A pumps - Repairs to P2 by Industrial Pump	On Going		101A				Placeholder - 4/12 - Evaluating cost for pump repair while relacement costs for parts or new pumps are looked at..Spare assembly still at shop - repairs pending

Hull 2021-2022 - 07M Projects, Tasks, and Needs - (AV)								
Maintenance Account - Year 7 - 05_01_21 to 04_30_22								
FOR JANUARY 2021 MOR					\$37,200.00			4/4/2022 15:19
Priority [1=high]	Description	Status	<i>completed</i>	Task	Estimates & funds remaining	Final Completed Cost	<i>Lead</i>	Comments
1	PC #2 rake repairs - Lydon	completed		103A		\$33,370.77		Time and materials per proposal;[\$18,000]Revised estimate due to additional issues not seen with first inspection. Estimated additional \$\$ - \$15,000
1	PC2 remaining repairs - turnbuickles	completed		103A				installation - INCL above.
1	Aeration Tank #1 mechanical assistance	completed		103A		\$6,911.47		hardware replacement and diffuser replacement - Late Nov, Early Dec.3 days of contractor assistance.
1	Deragger PS3 for Pump #2	On Going		102B				Needs to be completed by MSI, additional electrican assistance.
TOTAL					\$37,200.00			



Maintenance History Report

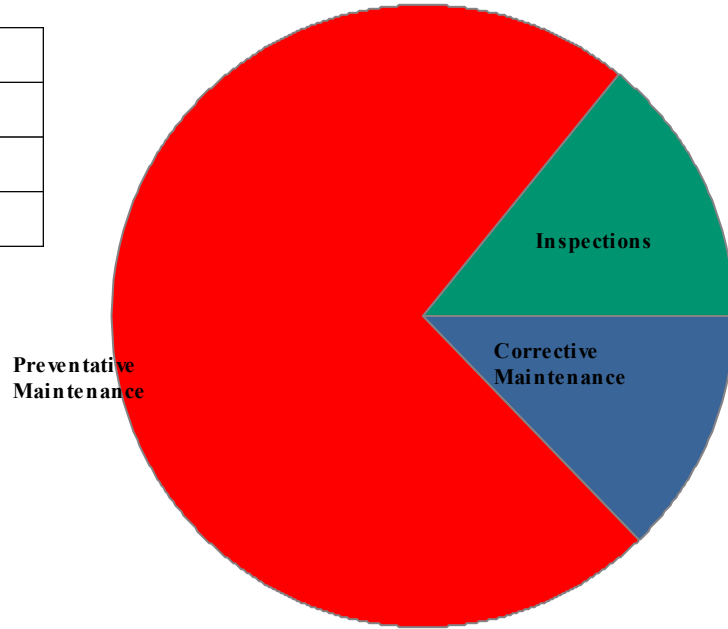
Start Date: 1/1/2022

End Date: 1/31/2022

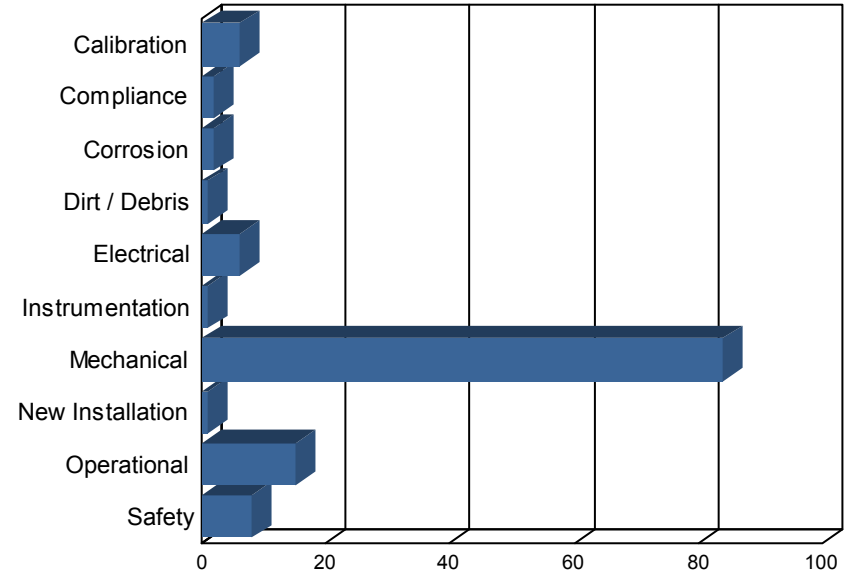
Hull Wastewater

Work Order History By Type

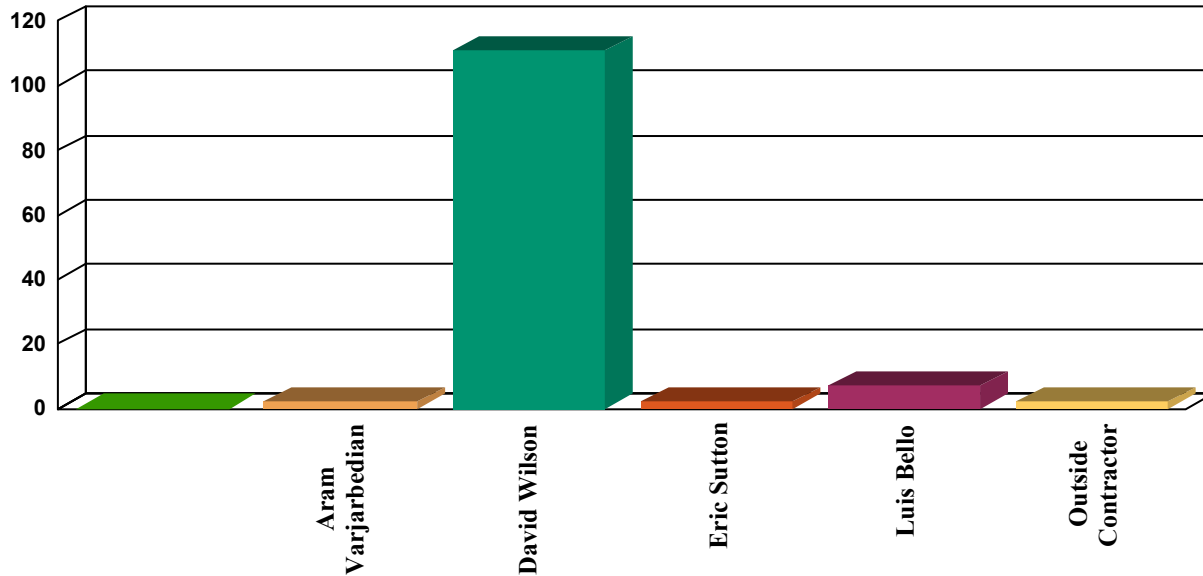
Corrective Maintenance	16
Inspections	18
Preventative Maintenance	92
Total Work Orders	126



Work Order History by Reason



Work Order History By Employee



Employee	WO Count	Labor Hours
Aram Varjarbedian	2	0
David Wilson	111	17
Eric Sutton	2	2
Luis Bello	7	0
Outside Contractor	2	3
Unassigned	2	10
Totals	126	31

Corrective Maintenance

Status Date	WO #	Asset Name	Work Description	Work History Note	Employee	Schedule Date	Status
1/14/22	15283	Secondary Clarifier 2 Drive System	SCADA alarm Secondary Clarifier 2 failure.	Replicated fault at catwalk. Heard growling before contactor tripped. Inspected chain and pulleys. Turned freely. Found short to ground in junction box mounted on the side of the catwalk. 2 inches of water drained out. Stripped wires, replaced caps and water seal. Hole drilled on side of junction box for conduit not sealed off. Sealed gap.	David Wilson	1/4/22	Completed
1/5/22	15284	Effluent Pump 2	Eff pump #2 failure of Pump motor	Reset VFD but overdrawing amps- likeky pump (1997!) no good- HiVoltage called to asses DW/PH Installed new spring.		1/5/22	In Process
1/10/22	15285	PS 9 Piping and Valves	Check valve pump 1 return spring broken.		David Wilson	1/10/22	Completed
1/11/22	15286	Effluent Pump 2	Install new 35hp Flygt pump to replace Effluent pump 2.	New pump installed 1/10/22. High power Electrical wired drive. Glen Fellows wired over temp and seal leak alarm. Tested output. 2.9 mgd @60hZ and 39.4 amps. SCADA runtime at install 42301 hours. No unusual noises or vibrations.	David Wilson	1/11/22	Completed
1/11/22	15287	Secondary Building	Two failed overhead light fixtures.	Isolated circuit in panel verified at ballast. Wired in new ballast and installed led bulbs. Verified function.	David Wilson	1/12/22	Completed
1/12/22	15288	RAS Pump 2	Replace failed coupling	Electrically isolated pump and removed guard. Installed new spider coupling. Returned to standby.	David Wilson	1/12/22	Completed
1/12/22	15289	Gravity Thickener 1	Door does not latch	Disassembled and cleaned door knob assembly. Latch stuck in bore. Cleaned and verified operation. Strike plate bent and not holding against latch. Cleaned and bent to engage properly. Tested and working properly.	David Wilson	1/12/22	Completed
1/12/22	15290	Truck 2 - 2009 Chevy 2500 HD	Diagnose no start	Verified concern. Dead battery. Charged battery. Tested alternator. 15vdc at battery.	David Wilson	1/12/22	Completed
1/13/22	15291	Wet Scrubber Fan	Replace drive belts	LOTO of equipment. Removed gaurd and belts. Installed new belts and set deflection. Installed gaurd and returned to service. Verified function. Noise eliminated.	David Wilson	1/13/22	Completed
1/13/22	15292	PS 1 Pump 1	Diagnose low output.	LOTO of equipment. Removed cleanouts. Rag ball in suction elbow. Could not remove through cleanout. Seperated suction elbow from volute and reducer. Found a shovel handle stuck in suction elbow. Teather tied to handle covered in rags. Reassembled pump and returned to service. Tested function. From 170 gpm to 280 gpm.	David Wilson	1/13/22	Completed
1/14/22	15293	Gravity Thickener 1	Door knob latch failure.	Uninstalled door knob. Disassembled for inspection. Latch return spring broken. Could not repair. Installed new lock in place of knob.	David Wilson	1/14/22	Completed
1/18/22	15294	Gravity Thickener 1	Install door pull	Drilled door and installed pull with rivets.	David Wilson	1/18/22	Completed
1/20/22	15295	30 - WW Treatment Plant - General	Repair lighting in main floor office.	Isolated lighting circuit for main floor office. Replaced ballasts and bulbs in two fixtures. Re-energized circuit and verified correction.	David Wilson	1/20/22	Completed
1/21/22	15296	Secondary Building	Repair two lighting fixtures in secondary gallery.	Isolated lighting circuit. Replaced bulbs and ballasts in two light fixtures. Re-energized circuit and verified correction.	David Wilson	1/14/22	Completed

Corrective Maintenance

Status Date	WO #	Asset Name	Work Description	Work History Note	Employee	Schedule Date	Status
1/25/22	15297	Primary Clarifier 2	skimmer arm clamp loose	IPC Lydon called in to secure clamp that had vibrated loose. rescue and tack weld. Josh S and Joe B. Before and after picture.	Outside Contractor	1/25/22	Completed
1/25/22	15298	30 - WW Treatment Plant - General	HSD trailer sewage line frozen on 1/24	4 inch sewer pipe to infl MH frozen due to pipe sag at MH and cold air being drawn into the MH. cover the manhole with tarps and blanket. Set up and thaw the line, approx 50 ft with torpedo heater and hot water. Reassemble and cover. chip out frozen ground to replace 4 ft section. inspect with camera. Insulate under the trailer.		1/25/22	Completed

Inspections

Status Date	WO #	Asset Name	Work Description	Work History Note	Employee	Schedule Date	Status
1/6/22	14747	Truck 3 - 2015 Chevy 3500 HD	Monthly vehicle inspection on do-Forms		David Wilson	12/6/21	Completed
1/6/22	14933	Blower Room Exhaust Fan 1	Monthly operational inspection		David Wilson	1/1/22	Completed
1/6/22	14934	Blower Room Exhaust Fan 2	Monthly operational inspection		David Wilson	1/1/22	Completed
1/10/22	14847	PS 1	PS #1 Inspection - Monthly	Wet well requires cleaning. About 40% surface solids.	David Wilson	1/6/22	Completed
1/10/22	14848	PS 3	PS #3 Inspection - Monthly	No issues found.	David Wilson	1/6/22	Completed
1/10/22	14849	PS 4	PS #4 Inspection - Monthly	Wet well requires cleaning. About 50% surface solids. Pump 1 seal leaking.	David Wilson	1/6/22	Completed
1/10/22	14850	PS 5	PS #5 Inspection - Monthly	Wet well has about 30% surface solids.	David Wilson	1/6/22	Completed
1/10/22	14851	PS 6	PS #6 Inspection - Monthly	Wet well requires cleaning.	David Wilson	1/6/22	Completed
1/10/22	14852	PS 9	PS #9 Inspection - Monthly	Check valve spring broken. Mueller valve.	David Wilson	1/6/22	Completed
1/10/22	14853	PS A	PS #A Inspection - Monthly	Wet well requires cleaning. About 60% surface solids.	David Wilson	1/6/22	Completed
1/10/22	14801	Eyewash Stations	WWTF Eyewash Inspection - Weekly		David Wilson	1/9/22	Completed
1/10/22	14800	Eyewash Stations	WWTF Eyewash Inspection - Weekly		David Wilson	1/2/22	Completed
1/11/22	14885	Fire Extinguishers	WWTF Fire Extinguisher Inspections - Monthly	Plymouth Fire Extinguisher onsite to exchange plant and station fire extinguishers. Annual service completed.	Outside Contractor	1/3/22	Completed
1/11/22	14641	Emergency Lighting & exit signs	Emergency Lighting Inspection - Monthly		Luis Bello	12/8/21	Completed
1/18/22	14901	Waste Oil Storage	Waste Oil Area Inspection		Luis Bello	1/11/22	Completed
1/18/22	14805	Emergency Lighting & exit signs	Emergency Lighting Inspection - Monthly		Luis Bello	1/12/22	Completed
1/19/22	14902	Universal waste area	Universal Waste Storage Area Inspection		Luis Bello	1/11/22	Completed
1/20/22	14802	Eyewash Stations	WWTF Eyewash Inspection - Weekly		David Wilson	1/16/22	Completed

Preventative Maintenance

Status Date	WO #	Asset Name	Work Description	Work History Note	Employee	Schedule Date	Status
1/3/22	14920	Generators "All Pump Station"	Generator - Monthly Load Test		Eric Sutton	1/2/22	Completed
1/4/22	14579	Grit Chamber Blower #4	Grit Rotary Blower #4 PM - Annual		David Wilson	11/24/21	Completed
1/4/22	14578	Sludge Storage Tank Blower #3	Sludge Rotary Blower #3 PM - Annual		David Wilson	11/24/21	Completed
1/5/22	14858	PS 1 Generator	PS #1 Generator Inspection and Load Test - Monthly		David Wilson	1/5/22	Completed
1/5/22	14854	PS 1 Generator	PS #1 Generator Inspection and Test - Weekly		David Wilson	1/5/22	Completed
1/5/22	14859	PS 3 Generator	PS #3 Generator Inspection and Load Test - Monthly		David Wilson	1/5/22	Completed
1/5/22	14860	PS 3 Generator	PS #3 Generator Inspection and Test - Weekly		David Wilson	1/5/22	Completed
1/5/22	14868	PS 4 Generator	PS #4 Generator Inspection and Load Test - Monthly		David Wilson	1/5/22	Completed
1/5/22	14864	PS 4 Generator	PS #4 Generator Inspection and Test - Weekly		David Wilson	1/5/22	Completed
1/5/22	14869	PS 5 Generator	PS #5 Generator Inspection and Load Test - Monthly		David Wilson	1/5/22	Completed
1/5/22	14870	PS 5 Generator	PS #5 Generator Inspection and Test - Weekly		David Wilson	1/5/22	Completed
1/5/22	14879	PS 6 Generator	PS #5 Generator Inspection and Load Test - Monthly		David Wilson	1/5/22	Completed
1/5/22	14880	PS 6 Generator	PS #6 Generator Inspection and Test - Weekly		David Wilson	1/5/22	Completed
1/5/22	14874	PS 9 Generator	PS #9 Generator Inspection and Test - Weekly		David Wilson	1/5/22	Completed
1/5/22	14878	PS 9 Generator	PS #9 Generator Inspection and Load Test - Monthly		David Wilson	1/5/22	Completed
1/5/22	14886	GasAlert Max XTII #1	4 gas meter calibration - monthly	No issues found.	David Wilson	1/1/22	Completed
1/5/22	14743	GasAlert Max XTII #2	monthly calibration	No issues found.	David Wilson	12/30/21	Completed
1/5/22	14734	Ventis MX4 #2 - 4 Gas	4 Gas Meter #2 Calibration - Monthly	No issues found.	David Wilson	12/30/21	Completed
1/5/22	14894	PS Kholer Trailer Mounted Generator	Generator - Monthly Load Test		Eric Sutton	1/2/22	Completed
1/5/22	14735	Ventis MX4 #3 - 4 Gas	4 Gas Meter #3 Calibration - Monthly	No issues found.	David Wilson	12/30/21	Completed
1/5/22	14737	Ventis MX4 #5 - 4 Gas	4 Gas Meter #5 Calibration - Monthly	Battery not charged. Replaced front cover. Calibration passed.	David Wilson	12/30/21	Completed
1/5/22	14738	Ventis MX4 #6 - 4 Gas	4 Gas Meter #6 Calibration - Monthly	No issues found.	David Wilson	12/30/21	Completed
1/5/22	14823	Influent Pump 2	Semi Annual - ARI air release valve insp and cleaning		David Wilson	1/5/22	Completed
1/5/22	14824	Influent Pump 2	Monthly Check Pump Couplings		David Wilson	1/5/22	Completed
1/5/22	14825	Influent Pump 3	Monthly Check Pump Couplings		David Wilson	1/5/22	Completed
1/5/22	14826	Influent Pump 3	Semi Annual - ARI air release valve insp and cleaning		David Wilson	1/5/22	Completed
1/5/22	14827	Influent Pump 4	Semi Annual - ARI air release valve insp and cleaning		David Wilson	1/5/22	Completed

Preventative Maintenance

Status Date	WO #	Asset Name	Work Description	Work History Note	Employee	Schedule Date	Status
1/5/22	14828	Influent Pump 4	Monthly Check Pump Couplings		David Wilson	1/5/22	Completed
1/5/22	14658	Influent Pump 2	Monthly Check Pump Couplings		David Wilson	12/1/21	Completed
1/5/22	14816	Influent Sluice Isolation Gate	Weekly operate through full range		David Wilson	1/5/22	Completed
1/5/22	14659	Influent Pump 3	Monthly Check Pump Couplings		David Wilson	12/1/21	Completed
1/5/22	14660	Influent Pump 4	Monthly Check Pump Couplings		David Wilson	12/1/21	Completed
1/5/22	14821	Influent Pump 1	Monthly Check Pump Couplings		David Wilson	1/5/22	Completed
1/5/22	14822	Influent Pump 1	Semi Annual - ARI air release valve insp and cleaning		David Wilson	1/5/22	Completed
1/5/22	14829	Influent Pump 5	Monthly Check Pump Couplings		David Wilson	1/5/22	Completed
1/5/22	14657	Influent Pump 1	Monthly Check Pump Couplings		David Wilson	12/1/21	Completed
1/5/22	14830	Influent Pump 5	Semi Annual - ARI air release valve insp and cleaning		David Wilson	1/5/22	Completed
1/5/22	14661	Influent Pump 5	Monthly Check Pump Couplings		David Wilson	12/1/21	Completed
1/5/22	14799	Portable Generator - Honda	Portable Generator Inspection - Monthly		David Wilson	1/5/22	Completed
1/5/22	14841	RST Feed Pump 1	Monthly Check Pump Couplings		David Wilson	1/5/22	Completed
1/5/22	14842	RST Feed Pump 2	Monthly Check Pump Couplings		David Wilson	1/5/22	Completed
1/5/22	14845	Sludge Transfer Pump 1	Monthly Check Pump Couplings		David Wilson	1/5/22	Completed
1/5/22	14679	Sludge Transfer Pump 1	Monthly Check Pump Couplings		David Wilson	12/1/21	Completed
1/5/22	14846	Sludge Transfer Pump 2	Monthly Check Pump Couplings		David Wilson	1/5/22	Completed
1/5/22	14672	RST Feed Pump 1	Monthly Check Pump Couplings		David Wilson	12/1/21	Completed
1/5/22	14680	Sludge Transfer Pump 2	Monthly Check Pump Couplings		David Wilson	12/1/21	Completed
1/5/22	14673	RST Feed Pump 2	Monthly Check Pump Couplings		David Wilson	12/1/21	Completed
1/6/22	14843	Primary Sludge Pump 1	Monthly Check Pump Couplings		David Wilson	1/5/22	Completed
1/6/22	14674	Primary Scum Pump	Pen Valley Double Disc pumps - Quarterly		David Wilson	12/9/21	Completed
1/6/22	14844	Primary Sludge Pump 2	Monthly Check Pump Couplings		David Wilson	1/5/22	Completed
1/10/22	14926	All Plant Gear box reducers	GEAR BOX MAINT - WEEKLY		David Wilson	1/9/22	Completed
1/10/22	14911	High level floats	Weekly High Float Alarm test		David Wilson	1/9/22	Completed
1/10/22	14925	All Plant Gear box reducers	GEAR BOX MAINT - WEEKLY		David Wilson	1/2/22	Completed
1/10/22	14910	High level floats	Weekly High Float Alarm test		David Wilson	1/2/22	Completed
1/11/22	14807	Generator #2 - Backup Detroit 500	Generator Weekly - Test Run no load		David Wilson	1/10/22	Completed

Preventative Maintenance

Status Date	WO #	Asset Name	Work Description	Work History Note	Employee	Schedule Date	Status
1/11/22	14812	Generator #1- Emergency Kohler 750	Generator Weekly - Test Run no load		David Wilson	1/10/22	Completed
1/11/22	14675	Secondary Scum Pump 1	Pen Valley Double Disc pumps - Quarterly		David Wilson	12/9/21	Completed
1/11/22	14676	Secondary Scum Pump 2	Pen Valley Double Disc pumps - Quarterly		David Wilson	12/9/21	Completed
1/11/22	14881	PS 6 Generator	PS #6 Generator Inspection and Test - Weekly		David Wilson	1/12/22	Completed
1/11/22	14921	Generators "All Pump Station"	Generator Weekly - Test Run no load		David Wilson	1/10/22	Completed
1/11/22	14890	PS Kohler Trailer Mounted Generator	Generator Weekly - Test Run no load		David Wilson	1/10/22	Completed
1/11/22	14838	RAS Pump 1	Monthly Check Pump Couplings		David Wilson	1/5/22	Completed
1/11/22	14840	RAS Pump 3	Monthly Check Pump Couplings		David Wilson	1/5/22	Completed
1/11/22	14839	RAS Pump 2	Monthly Check Pump Couplings		David Wilson	1/5/22	Completed
1/12/22	14875	PS 9 Generator	PS #9 Generator Inspection and Test - Weekly		David Wilson	1/12/22	Completed
1/12/22	14855	PS 1 Generator	PS #1 Generator Inspection and Test - Weekly		David Wilson	1/12/22	Completed
1/12/22	14871	PS 5 Generator	PS #5 Generator Inspection and Test - Weekly		David Wilson	1/12/22	Completed
1/12/22	14861	PS 3 Generator	PS #3 Generator Inspection and Test - Weekly		David Wilson	1/12/22	Completed
1/12/22	14865	PS 4 Generator	PS #4 Generator Inspection and Test - Weekly		David Wilson	1/12/22	Completed
1/12/22	14817	Influent Sluice Isolation Gate	Weekly operate through full range		David Wilson	1/12/22	Completed
1/12/22	14837	Wet Scrubber Fan	Scrubber Exhaust Fan PM - Monthly	LOTO of equipment. Inspected and greased pillow block bearings. Inspected and greased motor bearings. Inspected fan assembly and louvers. Checked and adjusted belt. Returned to service. Some bearing noise coming from motor at 50hZ. Recommend increasing speed to 52hZ.	David Wilson	1/12/22	Completed
1/13/22	14907	Chlorine probe ATl	Change electrolyte		Aram Varjarbedian	1/1/22	Completed
1/13/22	14904	Chlorine probe ATl	Weekly calibration		Aram Varjarbedian	1/3/22	Completed
1/18/22	14813	Generator #1- Emergency Kohler 750	Generator Weekly - Test Run no load		David Wilson	1/17/22	Completed
1/18/22	14808	Generator #2 - Backup Detroit 500	Generator Weekly - Test Run no load		David Wilson	1/17/22	Completed
1/18/22	14891	PS Kohler Trailer Mounted Generator	Generator Weekly - Test Run no load		David Wilson	1/17/22	Completed
1/18/22	14922	Generators "All Pump Station"	Generator Weekly - Test Run no load		David Wilson	1/17/22	Completed
1/19/22	14918	pH meter	Clean and Calibrate		David Wilson	1/1/22	Completed
1/19/22	14919	ORP meter	Clean and Calibrate		David Wilson	1/10/22	Completed
1/20/22	14818	Influent Sluice Isolation Gate	Weekly operate through full range		David Wilson	1/19/22	Completed

Preventative Maintenance

Status Date	WO #	Asset Name	Work Description	Work History Note	Employee	Schedule Date	Status
1/20/22	14912	High level floats	Weekly High Float Alarm test		David Wilson	1/16/22	Completed
1/20/22	14927	All Plant Gear box reducers	GEAR BOX MAINT - WEEKLY		David Wilson	1/16/22	Completed
1/20/22	14856	PS 1 Generator	PS #1 Generator Inspection and Test - Weekly		David Wilson	1/19/22	Completed
1/20/22	14876	PS 9 Generator	PS #9 Generator Inspection and Test - Weekly		David Wilson	1/19/22	Completed
1/20/22	14872	PS 5 Generator	PS #5 Generator Inspection and Test - Weekly		David Wilson	1/19/22	Completed
1/20/22	14882	PS 6 Generator	PS #6 Generator Inspection and Test - Weekly		David Wilson	1/19/22	Completed
1/20/22	14862	PS 3 Generator	PS #3 Generator Inspection and Test - Weekly		David Wilson	1/19/22	Completed
1/20/22	14866	PS 4 Generator	PS #4 Generator Inspection and Test - Weekly		David Wilson	1/19/22	Completed
1/20/22	14820	Mechanical Screen & Washpress System	Monthly Maintenance		David Wilson	1/3/22	Completed
1/26/22	14892	PS Kholer Trailer Mounted Generator	Generator Weekly - Test Run no load		Luis Bello	1/24/22	Completed
1/26/22	14923	Generators "All Pump Station"	Generator Weekly - Test Run no load		Luis Bello	1/24/22	Completed
1/27/22	14913	High level floats	Weekly High Float Alarm test		Luis Bello	1/23/22	Completed

Date	Asset ID	Asset Description	Asset Class	Name	Workflow Class
1/12/2022 14:25	03-020	88 MAIN ST	Hull Parcels	Sutton, Eric	Hull - Markout
1/12/2022 14:26	05-078	73 HIGHLAND AVE	Hull Parcels	Sutton, Eric	Hull - Markout
1/14/2022 13:04	09-044-A	3 FITZPATRICK WAY	Hull Parcels	Sutton, Eric	Hull - Markout
1/12/2022 14:27	09-053	17 PT ALLERTON AVE	Hull Parcels	Sutton, Eric	Hull - Markout
1/12/2022 14:23	09-077	25 WINTHROP AVE	Hull Parcels	Sutton, Eric	Hull - Markout
1/12/2022 14:28	10-090	42 BEACON RD	Hull Parcels	Sutton, Eric	Hull - Markout
1/12/2022 14:21	12-081	836 NANTASKET AVE	Hull Parcels	Sutton, Eric	Hull - Markout
1/12/2022 14:20	14-134	16 P STREET	Hull Parcels	Sutton, Eric	Hull - Markout
1/19/2022 13:48	145 N Truro St	145 N Truro St Grinder Pump	Hull Grinder Pumps	Sutton, Eric	Hull - Grinder Pump Maintenance
1/12/2022 14:18	15-015	44 J STREET	Hull Parcels	Sutton, Eric	Hull - Markout
1/26/2022 13:21	15-054	32 L STREET	Hull Parcels	Sutton, Eric	Hull - Markout
1/12/2022 14:15	15-066	76 J STREET	Hull Parcels	Sutton, Eric	Hull - Markout
1/27/2022 14:02	17-101	207 BEACH AVE	Hull Parcels	Sutton, Eric	Hull - Markout
1/18/2022 8:07	18 Rockview Rd	18 Rockview Rd Grinder Pump	Hull Grinder Pumps	Sutton, Eric	Hull - Grinder Pump Maintenance
1/4/2022 14:16	24-014	30 KENBERMA ST	Hull Parcels	Sutton, Eric	Hull - Markout
1/12/2022 14:31	26-202	538 NANTASKET AVE	Hull Parcels	Sutton, Eric	Hull - Markout
1/12/2022 14:45	26-213	469 NANTASKET AVE	Hull Parcels	Sutton, Eric	Hull - Markout
1/12/2022 14:33	27-015	13 MANOMET AVE	Hull Parcels	Sutton, Eric	Hull - Markout
1/7/2022 14:12	27-109	387 NANTASKET AVE	Hull Parcels	Sutton, Eric	Hull - Sewer Backup
1/3/2022 14:53	29-033	87 EDGEWATER RD	Hull Parcels	Sutton, Eric	Hull - Markout
1/12/2022 14:35	29-089	115 NANTASKET RD	Hull Parcels	Sutton, Eric	Hull - Markout
1/12/2022 14:37	33-114	43 PORRAZZO RD	Hull Parcels	Sutton, Eric	Hull - Markout
1/18/2022 22:32	33-138	32 PORRAZZO RD	Hull Parcels	Sutton, Eric	Hull - Markout
1/12/2022 14:41	34-073	11 A PORRAZZO RD	Hull Parcels	Sutton, Eric	Hull - Markout
1/12/2022 14:39	34-077	0 PORRAZZO RD	Hull Parcels	Sutton, Eric	Hull - Markout
1/12/2022 14:36	35-087	10 ROOSEVELT AVE	Hull Parcels	Sutton, Eric	Hull - Markout
1/12/2022 14:49	52-003	5 DAMON PARK RD	Hull Parcels	Sutton, Eric	Hull - Markout
1/16/2022 14:15	96 N Truro St	96 N Truro St Grinder Pump	Hull Grinder Pumps	Varjabedian, Aram	Hull - Grinder Pump Maintenance
1/16/2022 13:00	96 Salisbury St	96 Salisbury St Grinder Pump	Hull Grinder Pumps	Varjabedian, Aram	Hull - Grinder Pump Maintenance
1/24/2022 15:11	Bacteria UNIT #21	UNIT #21	Hull In Pipe Bacteria Unit	Sutton, Eric	Hull - In Pipe Bacteria Units
1/24/2022 15:13	Bacteria UNIT #22	UNIT #22	Hull In Pipe Bacteria Unit	Sutton, Eric	Hull - In Pipe Bacteria Units
1/24/2022 15:04	Bateria UNIT # 8	UNIT # 8	Hull In Pipe Bacteria Unit	Sutton, Eric	Hull - In Pipe Bacteria Units
1/24/2022 14:59	Bateria UNIT #1	UNIT #1	Hull In Pipe Bacteria Unit	Sutton, Eric	Hull - In Pipe Bacteria Units
1/24/2022 15:04	Bateria UNIT #10	UNIT #10	Hull In Pipe Bacteria Unit	Sutton, Eric	Hull - In Pipe Bacteria Units
1/24/2022 15:08	Bateria UNIT #11	UNIT #11	Hull In Pipe Bacteria Unit	Sutton, Eric	Hull - In Pipe Bacteria Units
1/24/2022 15:12	Bateria UNIT #12	UNIT #12	Hull In Pipe Bacteria Unit	Sutton, Eric	Hull - In Pipe Bacteria Units
1/24/2022 15:11	Bateria UNIT #13	UNIT #13	Hull In Pipe Bacteria Unit	Sutton, Eric	Hull - In Pipe Bacteria Units
1/24/2022 15:10	Bateria UNIT #14	UNIT #14	Hull In Pipe Bacteria Unit	Sutton, Eric	Hull - In Pipe Bacteria Units
1/24/2022 15:11	Bateria UNIT #15	UNIT #15	Hull In Pipe Bacteria Unit	Sutton, Eric	Hull - In Pipe Bacteria Units
1/24/2022 15:09	Bateria UNIT #16	UNIT #16	Hull In Pipe Bacteria Unit	Sutton, Eric	Hull - In Pipe Bacteria Units
1/24/2022 15:05	Bateria UNIT #17	UNIT #17	Hull In Pipe Bacteria Unit	Sutton, Eric	Hull - In Pipe Bacteria Units
1/24/2022 15:08	Bateria UNIT #18	UNIT #18	Hull In Pipe Bacteria Unit	Sutton, Eric	Hull - In Pipe Bacteria Units
1/24/2022 15:07	Bateria UNIT #19	UNIT #19	Hull In Pipe Bacteria Unit	Sutton, Eric	Hull - In Pipe Bacteria Units
1/24/2022 15:00	Bateria UNIT #2	UNIT #2	Hull In Pipe Bacteria Unit	Sutton, Eric	Hull - In Pipe Bacteria Units
1/24/2022 15:09	Bateria UNIT #20	UNIT #20	Hull In Pipe Bacteria Unit	Sutton, Eric	Hull - In Pipe Bacteria Units
1/24/2022 15:12	Bateria UNIT #23	UNIT #23	Hull In Pipe Bacteria Unit	Sutton, Eric	Hull - In Pipe Bacteria Units
1/24/2022 14:59	Bateria UNIT #24	UNIT #24	Hull In Pipe Bacteria Unit	Sutton, Eric	Hull - In Pipe Bacteria Units
1/24/2022 15:06	Bateria UNIT #3	UNIT #3	Hull In Pipe Bacteria Unit	Sutton, Eric	Hull - In Pipe Bacteria Units
1/24/2022 14:58	Bateria UNIT #4	UNIT #4	Hull In Pipe Bacteria Unit	Sutton, Eric	Hull - In Pipe Bacteria Units
1/24/2022 15:01	Bateria UNIT #5	UNIT #5	Hull In Pipe Bacteria Unit	Sutton, Eric	Hull - In Pipe Bacteria Units
1/24/2022 15:02	Bateria UNIT #5	UNIT #5	Hull In Pipe Bacteria Unit	Sutton, Eric	Hull - In Pipe Bacteria Units
1/24/2022 15:02	Bateria UNIT #5	UNIT #5	Hull In Pipe Bacteria Unit	Sutton, Eric	Hull - In Pipe Bacteria Units
1/24/2022 15:01	Bateria UNIT #6	UNIT #6	Hull In Pipe Bacteria Unit	Sutton, Eric	Hull - In Pipe Bacteria Units
1/24/2022 15:03	Bateria UNIT #7	UNIT #7	Hull In Pipe Bacteria Unit	Sutton, Eric	Hull - In Pipe Bacteria Units
1/24/2022 15:14	Bateria UNIT #9	UNIT #9	Hull In Pipe Bacteria Unit	Sutton, Eric	Hull - In Pipe Bacteria Units