



woodardcurran.com

COMMITMENT & INTEGRITY DRIVE RESULTS

HULL WATER POLLUTION CONTROL FACILITY

January
2021

MONTHLY OPERATING REPORT



NPDES NO. MA0101231

Table of Contents

1	Executive Summary	3
2	Flows and Loadings.....	4
2.1	Average effluent monthly flows – 2+ year comparison	5
2.2	Monthly Summary of Rainfall and the Influence on Effluent Flows	6
3	Compliance	8
4	Key Performance Indicators	13
4.1	Water Quality – january 2021.....	13
5	Odor Control	16
6	Maintenance Summary	19
6.1	Tasks Completed this Month	19
6.2	Asset Management Accounts	25
7	Safety.....	26
8	Staff Development.....	28
9	Collection System	29
9.1	Wet Well Cleaning	29
9.2	Collection System Maintenance	29
10	Project Management & Administration	31
10.1	On-Going Projects and Support Items	31

Cover pictures:

[top] Return sludge pipe – returned to service – inserted new DI pipe [spool piece] and blank off old flow meter bypass in secondary building.

[bottom] Check valve at Pump station #3 – on-going ragging problems at PS3 and other pump stations due to wipes

1 EXECUTIVE SUMMARY

This Monthly Operating Report provides a summary of the pertinent information and activities that occurred at Hull WPCF during the month of January 2021.

- No lost-time incidents for the month of January.
- Continued/On-going covid-19 safety operations: Regular daily operations and staff scheduling. Coordination with vendors and contractors for project work. Following CDC, Town, State and Company with mandated safety protocols and mask use. Dealing with staff issues related to covid19.
- With headworks area concrete rehab work completed screenings operation returned to normal. Repairing several drainpipe lines in headworks area and redirecting to proper locations. Grit system is still off-line.
- There were **148** effluent samples taken in the month of January [details on page (12).] All effluent samples collected were compliant. The average daily flow for the month was 1.28 MGD. A total of 2.57 inches of rainfall was recorded. Process conditions were stable and compliant.
- The RAS line was returned to service in January. All 6-inch hoses flushed and stored away. Reorganized hose storage in storage box/trailer.
- The plant and collection system odors remained low due to low sewage temperatures The Bioxide system was off for most of the month.
- The 06M Asset Management Accounts checkbook summary and planned expenses updated for contract year #6 are attached. Latest revision date: 3/24/21
- There were 3 grinder pump call outs during the month of January with one pump replacement.
- W&C O&M continued to support many of the Engineering projects – HW punch list items, pump station punch list items, with multiple visits to pump stations, PS9 & planned plant engineering upgrade.

Woodard & Curran strives to deliver a high-quality operations service and is responsive to our customers concerns. Please feel free to request any modifications to the format or content of this report.

2 FLOWS AND LOADINGS

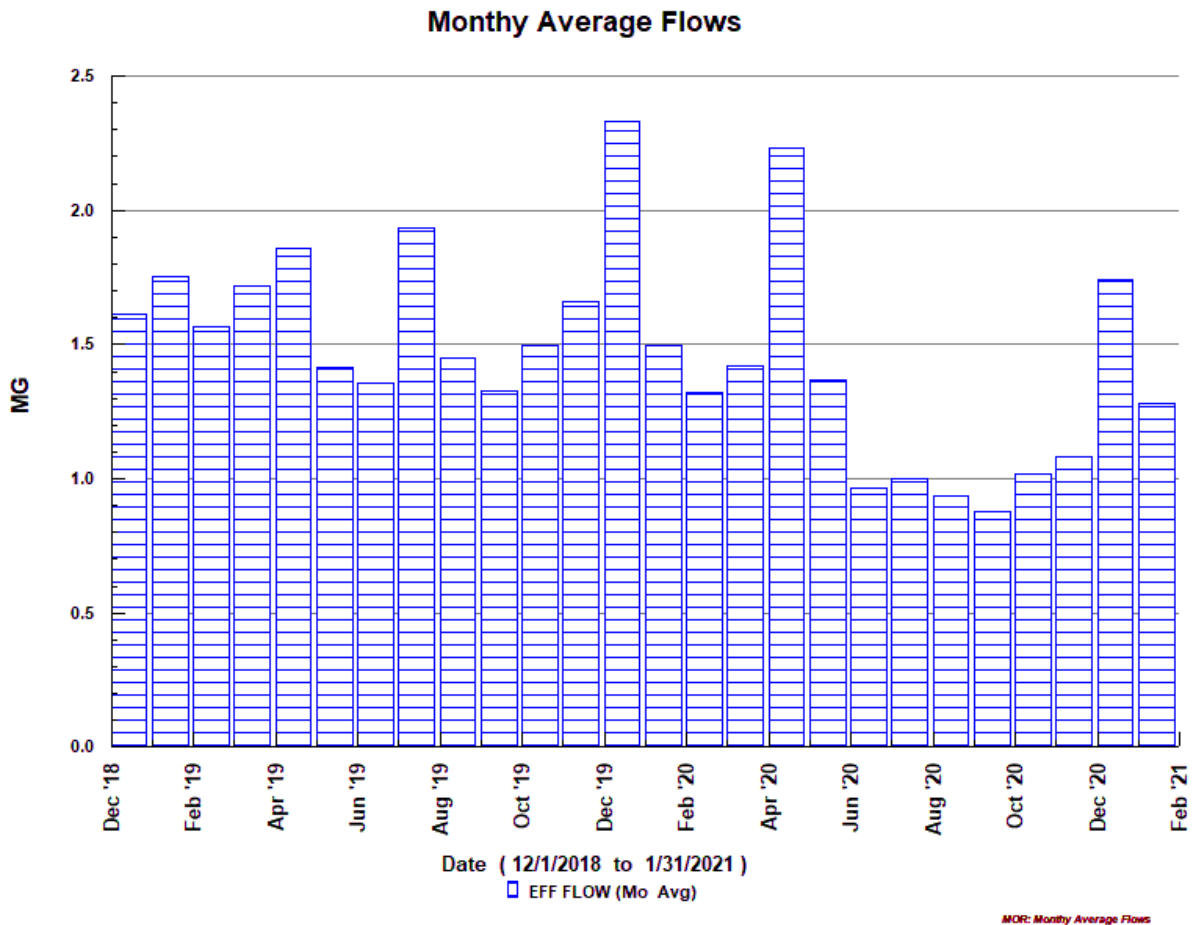


Average Daily Flows and Loadings for the Month:

	Eff Flow MGD	Inf Flow MGD	Inf BOD LBS	Inf TSS LBS	Eff BOD LBS	EFF TSS LBS
Jan 2019	1.755	1.968*	1051	1679	123	170
Jan 2020	1.495	1.713*	1377	3691	36	110
Jan 2021	1.279	1.570*	4775	4189	31	79

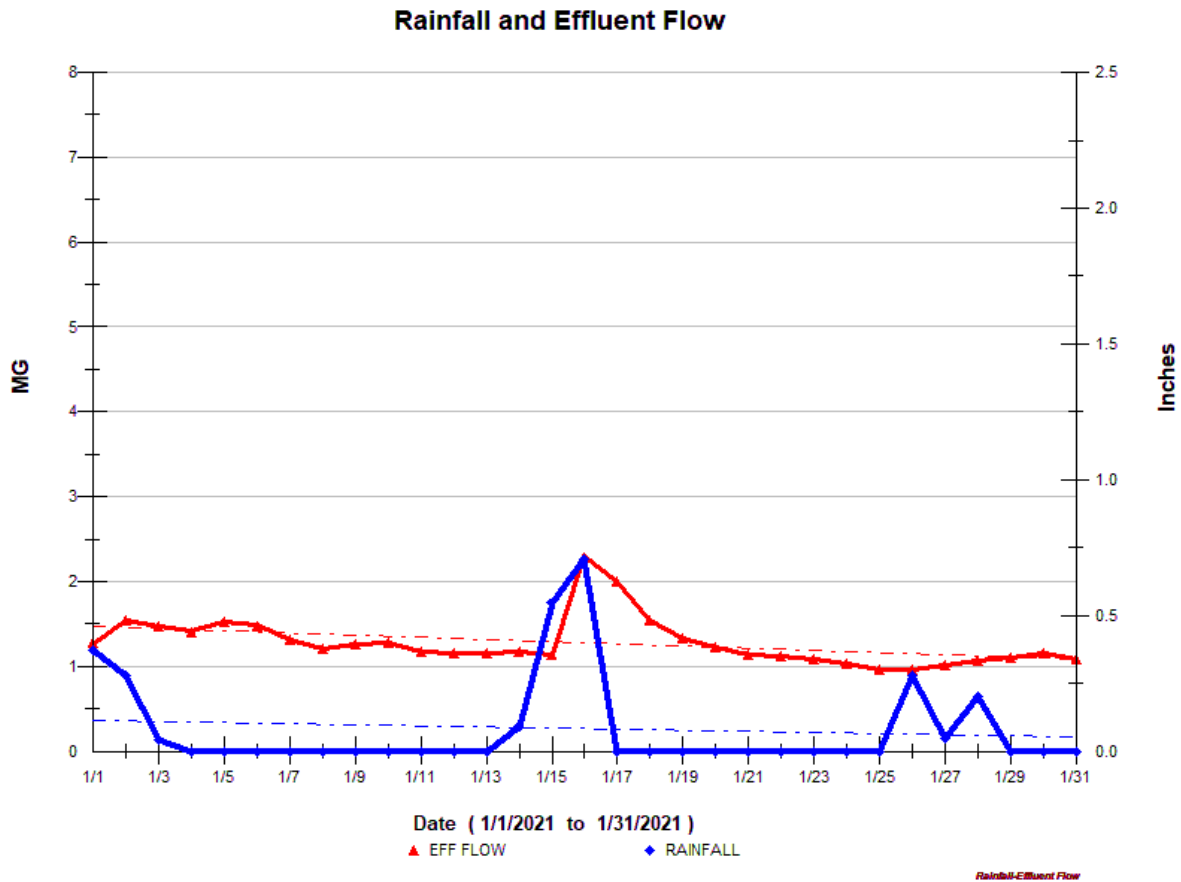
* On-Going -The influent flow meters are strap on doppler flow meters, and the internal pipe condition prevents getting a strong signal. The staff utilizes the area velocity meter in the aeration tank inlet channel as well as the headworks influent Parshall Flume meter. All reported loadings are based on the effluent flow meter. All meters are tied into the Scada system so that influent flows can be monitored. Flows in 2020 are lower due to improvements in the collection system to reduce inflow and infiltration.

2.1 AVERAGE EFFLUENT MONTHLY FLOWS – 2+ YEAR COMPARISON

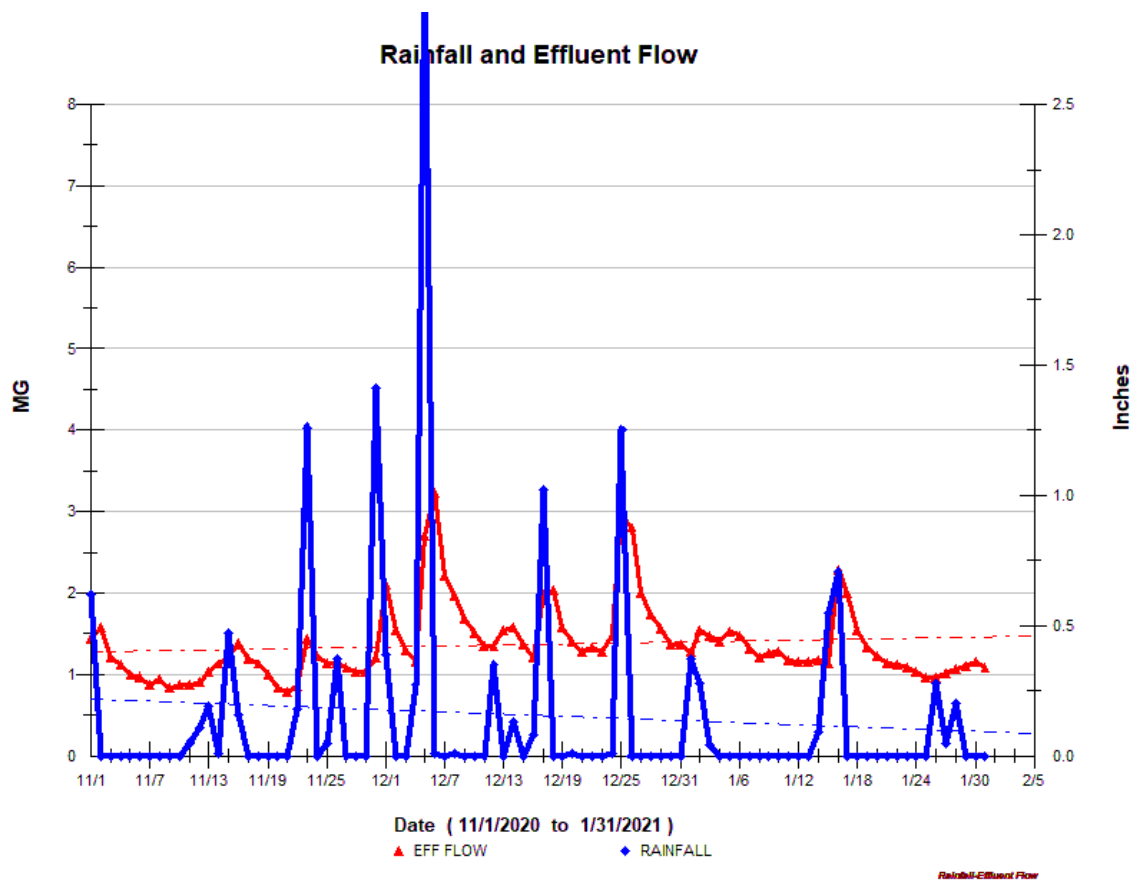


The monthly average flow for January was 1.28 MGD, lower than the previous month. The total precipitation for the month was 2.57 inches. The graph shows the 2-plus year summary of the monthly average flows that includes the most recent 4-month period.

2.2 MONTHLY SUMMARY OF RAINFALL AND THE INFLUENCE ON EFFLUENT FLOWS



This graph shows the days where precipitation occurred [rainfall] [Blue Peaks]. This graph indicates that there were a few wet days in January, with the 1/15-16 period where 1.2" of precipitation was received. The wet weather had some limited and short-term impact on plant flows.



This graph shows the last few months: November, December, and January. There was low plant flow impact from wet weather in January.

3 COMPLIANCE



➤ Plant Effluent

There were no permit exceedances in the month of January.

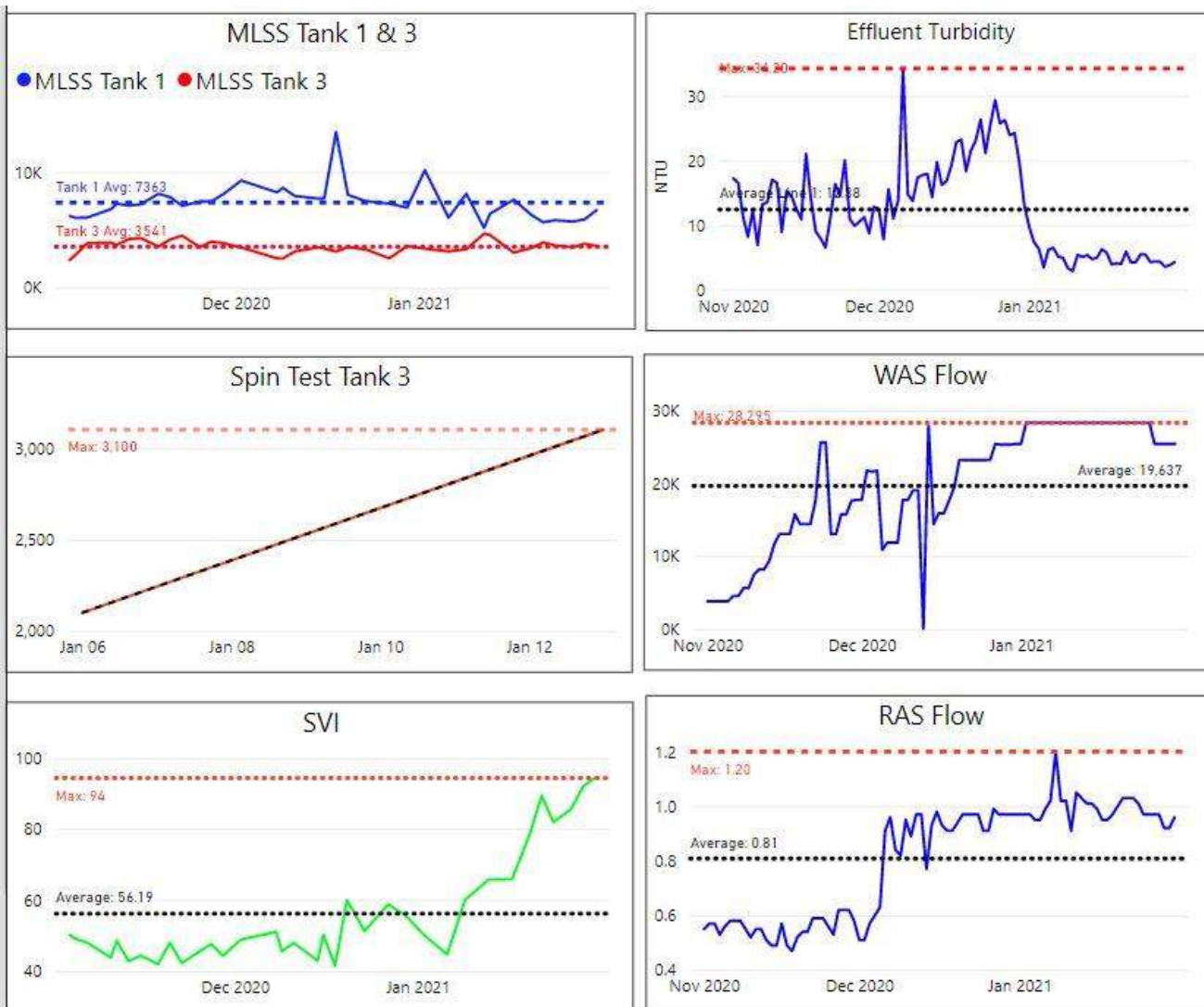
- Plant process conditions were stable during the month. The effluent quality gradually improved. Secondary system sludge setting rate was slower due to colder water temperatures. The return sludge flow was returned to the regular line on 1/11/21 and the use of the above ground hoses was halted. Adjustments to timed aeration schedule made as needed. Some icing issues on the SC's due to sub-zero temps. PW was shut off during these periods.



- A Copy of the monthly NPDES reports for January 2021 was submitted to the EPA & DEP and then forwarded to the Hull Sewer Dept.



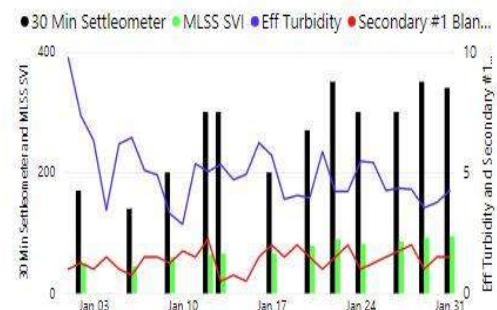
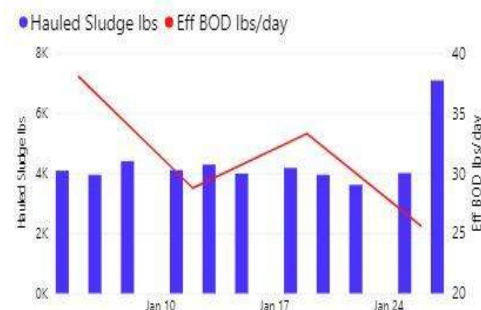
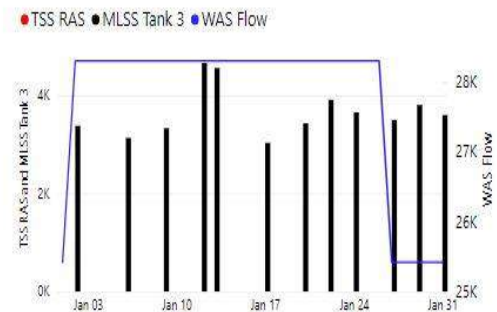
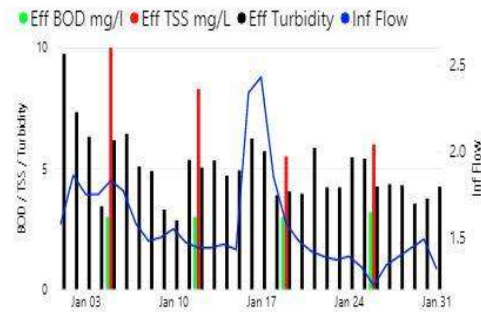
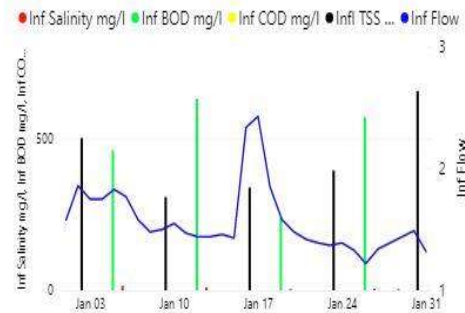
Monthly Process Summary graphs from power BI – January 2021.



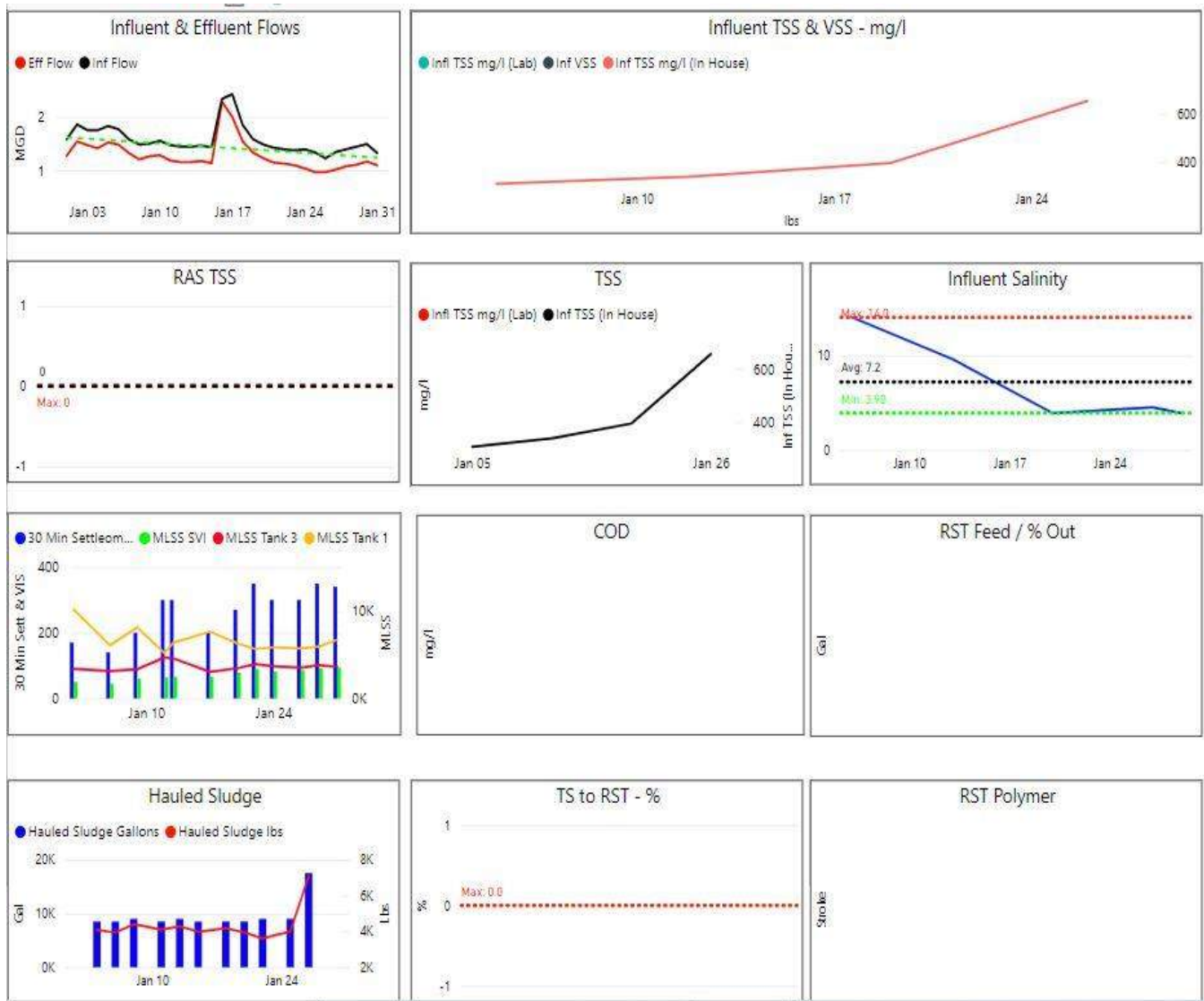
Graphs shows trending of secondary processes using Power BI for the 3-month period ending on 1/31/21. The tank solids levels under aeration showed relatively stable levels of solids. Sludge settling was slower but effluent turbidity was improved.

Hull Wastewater Treatment Facility Drylet Parameters

1/1/2021 1/31/2021



Power BI Graphs shows trending of various processes – January 2021.



Additional Power BI Graphs that show trending of various parameters – January 2021

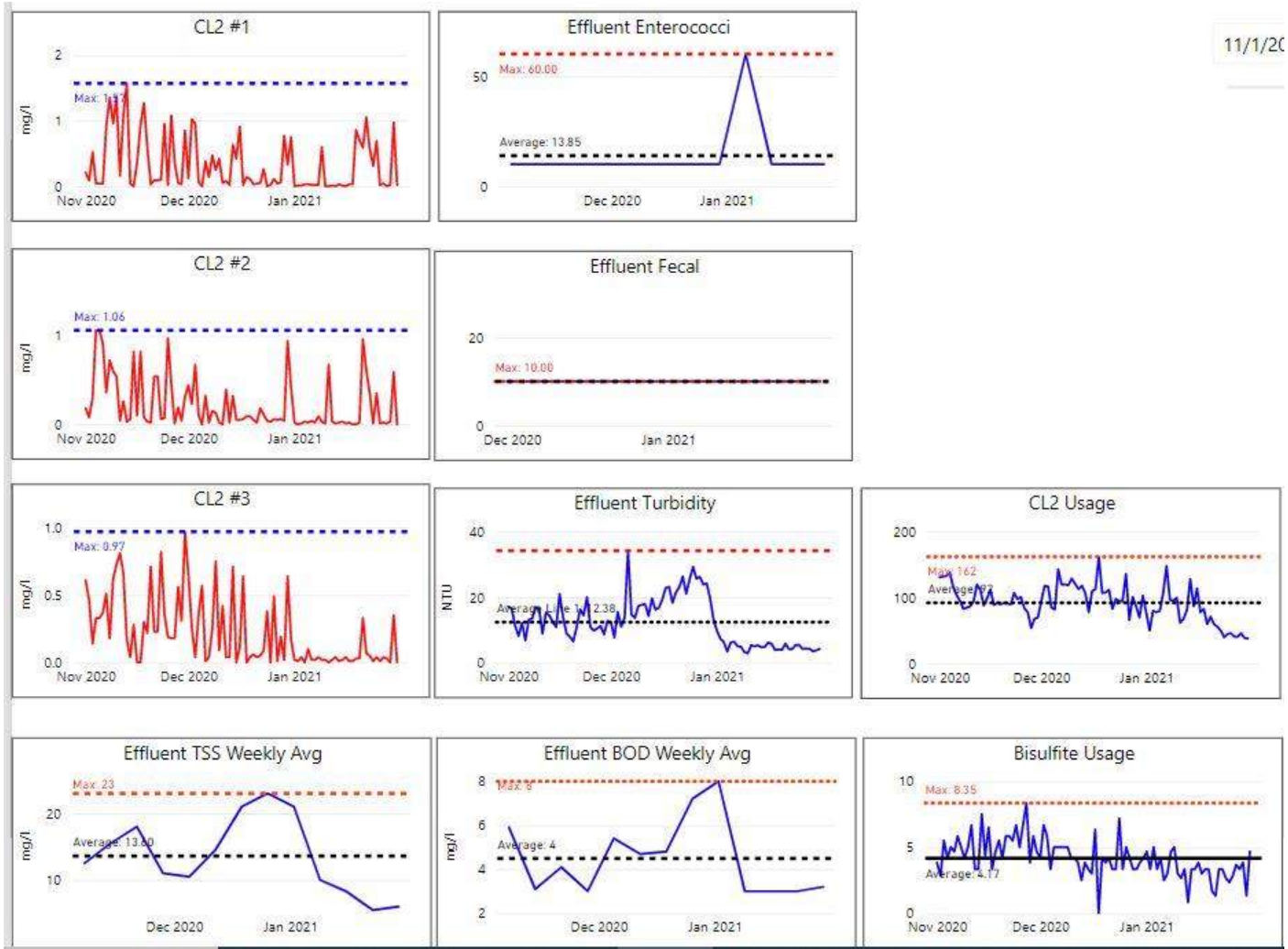
4 KEY PERFORMANCE INDICATORS



4.1 WATER QUALITY – JANUARY 2021

Parameter Info		Permit Requirements					Results				
Parameter	Units	Daily Allowed Max in month	Min %	Weekly Avg. Max Allowed in month	Monthly Avg	Freq	Period Monthly Avg.	Period Weekly Min	Period Daily Max	# of Samples	# of Violations
Eff TSS	MG/L	50		45	30	1 X Week	7.5	5.5	10.0	4	0
Eff TSS	LBS			1152	768	1 X Week	78.9	48	126.8		0
% TSS Rem	%		85			1 X Month	92.8				0
Eff BOD	MG/L	50		45	30	1 X Week	3.1	3.0	3.2	4	0
Eff BOD	LBS			1152	768	1 X Week	31.4	25.6	38.0		0
% BOD Rem	%		85			1 X Month	99.4				0
Eff Chlorine	MG/L	1.0			0.7	3 X Day	0.13	0.01	0.64	93	0
Eff Fecal	#/100 ML	260			88	1 X Week	10	10	10	4	0
Eff pH	SU	8.5	6.5			1X Daily	6.8	6.5	7.7	31	0
Enterococci	CFU/100 ML	276			35	1 X Week	16	10	60	4	0

There were 148 effluent samples taken in the month of January.

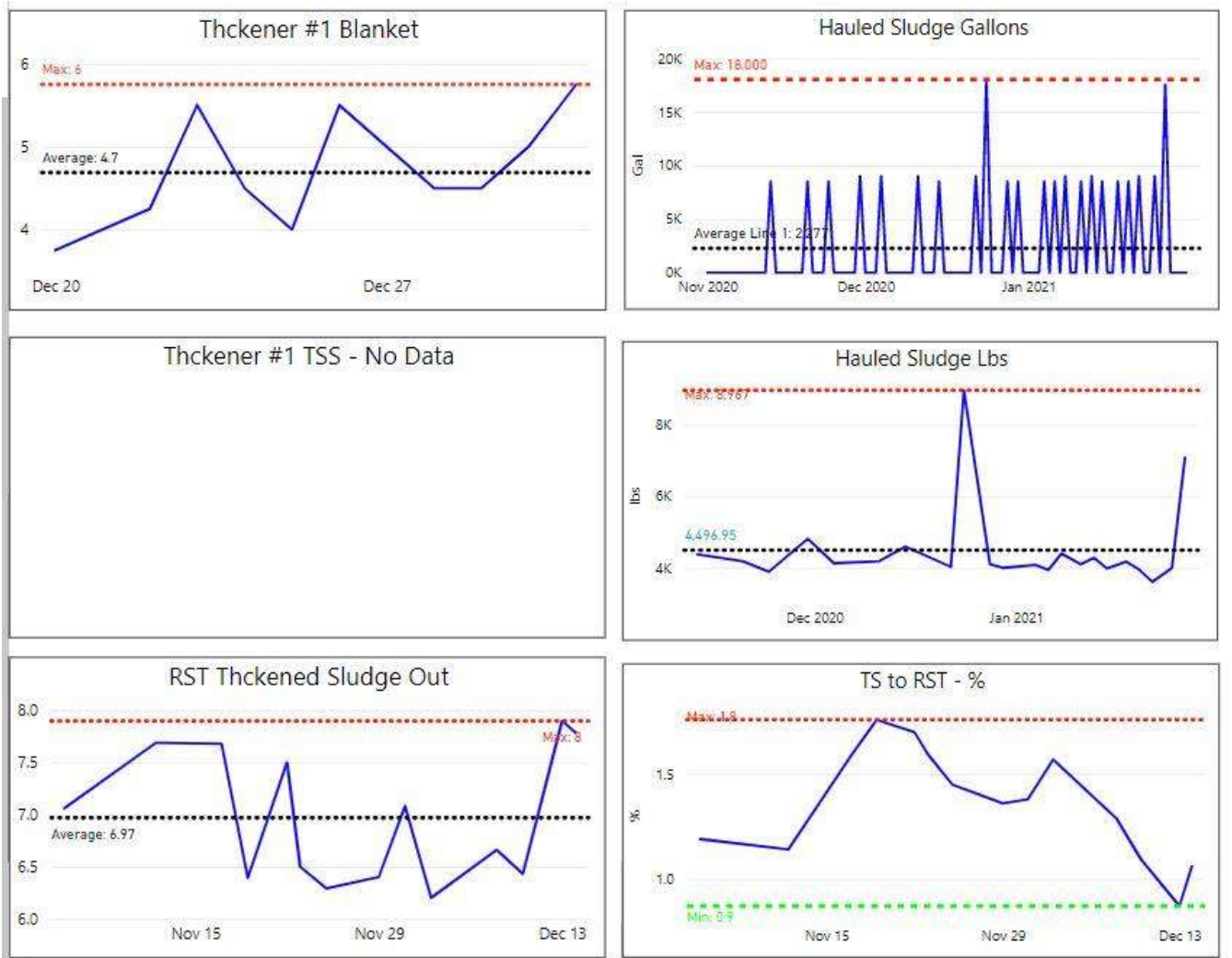


Power BI graphs showing effluent compliance for the last 3 months, November 2020 through January 2021 - chlorine residuals, effluent compliance, & chemical use. Bleach [sodium hypochlorite] & sodium bisulfite trending lower, and effluent quality improving.

Gallons Treated vs Sludge Disposed

Month	Effluent Treated, MG	Sludge Disposed, Gals
Jan 2019	54.42	117,000
Jan 2020	46.34	95,500
Jan 2021	39.64	104,500

Additional Power BI graphs for sludge solids for November, December, and January.



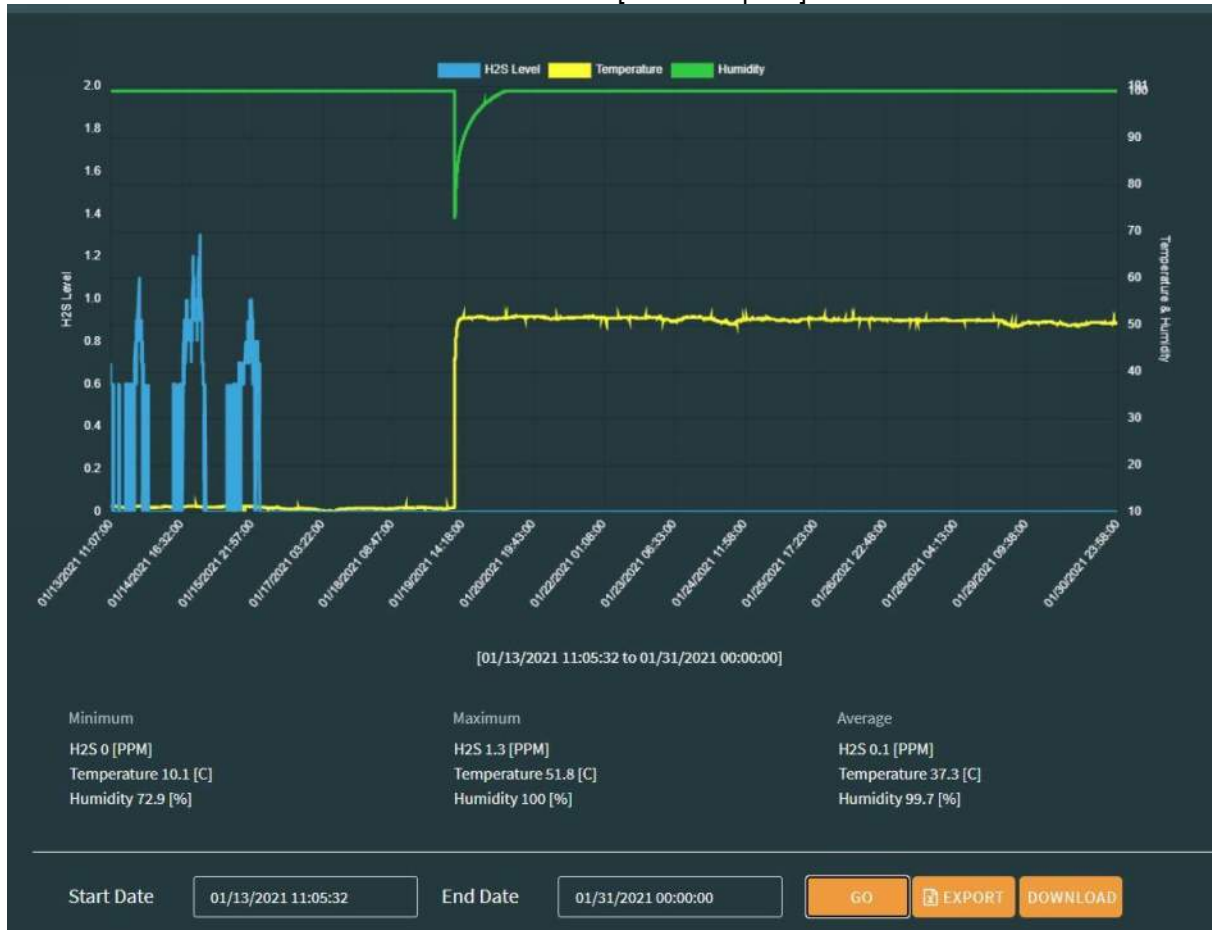
5 ODOR CONTROL

There were no odor complaint calls received during the month of January for the wastewater facility. There were no issues with floating sludge on the surface of the secondary clarifier and no surface spray water was needed. The gravity thickener and primary clarifier were on-line. The Bioxide system was off for nearly the entire month of January. The monthly graphs are attached below.

- “In-Pipe” bacteria addition continued with all 24 Microbe Dosing Stations [MDU] operational. The monthly bottle changes were completed on 1/7/21. The bi-weekly change outs of the bacteria bottles at three lift stations in the wet wells or manhole just prior to the station. [PS 3, PS 5, PS 9] were done on 1/22/21.
- Mixing systems/aerators were all functional and in timed mode at the pump stations, except for pump station #3. [Bioxide addition is at PS 3].
- Hydrogen sulfide monitoring units [H₂S] were recording and being trended on the odor scrubber for monitoring inlet and outlet H₂S levels. Weekly neighborhood monitoring around the plant done with portable Jerome meter as needed.

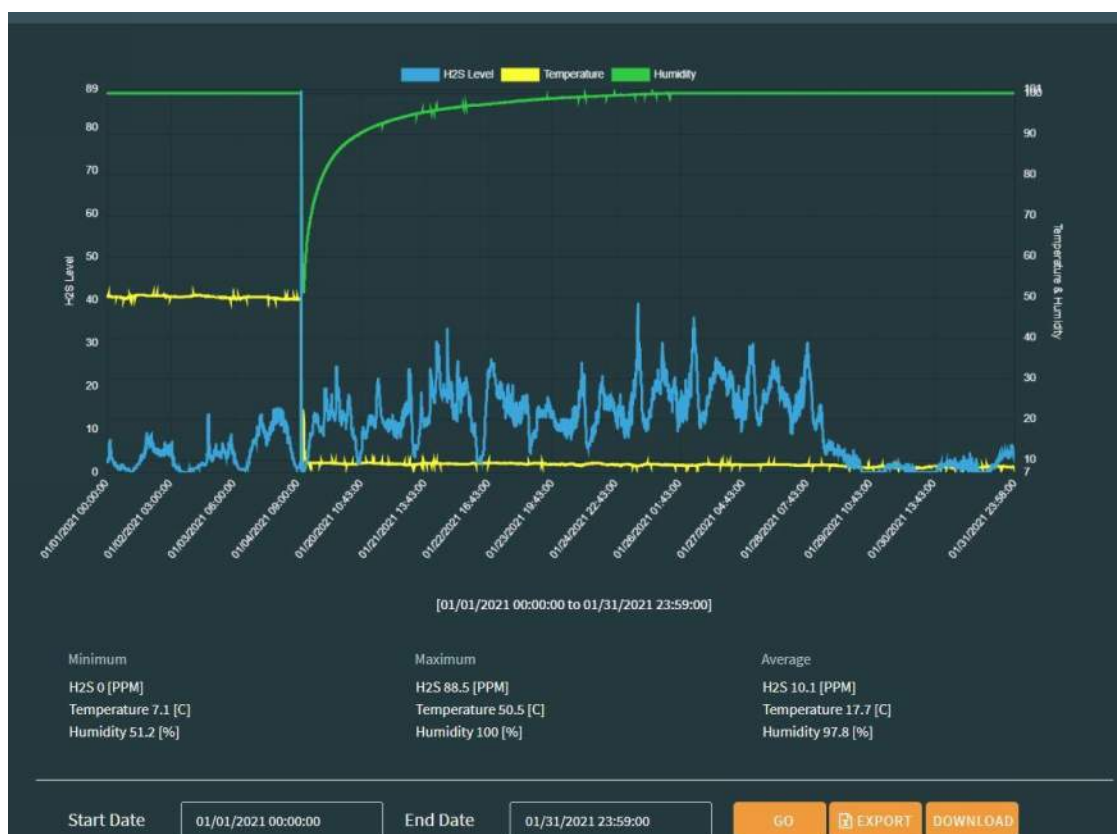
[pictured below: trending graphs for H₂S levels recorded from the vapor link system cellular at manhole at XYZ Street/Nantasket Ave and Nantasket Ave/Water Street.

XYZ – Nantasket Ave [closest to plant]



The odor data logging unit at XYZ that was being used to monitor overall H2S levels as close to the plant stopped recording around January 16th. Evoqua was contacted to investigate. Prior to that the H2S levels were low [below 2 ppm]. The early January data was not captured in the attached graph.

Nantasket Ave/Water Street [at end of PS 3 force main and PS 4 discharge]



Pump station #3 is the only location where Bioxide is stored. The chemical is added here, and then monitored at the end of the force main at Nantasket & Water Street. The excess nitrate concentration in the sewage is available to treat the additional H2S contributed from other parts of the system – PS4, contributions from lines feeding the interceptor, etc. all the way to the plant.

There were low H2S levels in the early part of January. As increased H2S levels were seen, there were adjustments made to get the levels back down below 10 ppm. Addressed communication issues with Evoqua.

6 MAINTENANCE SUMMARY

6.1 TASKS COMPLETED THIS MONTH

The SEMS monthly work order summary for January is compiled and attached for review.

Key items of note are listed below.

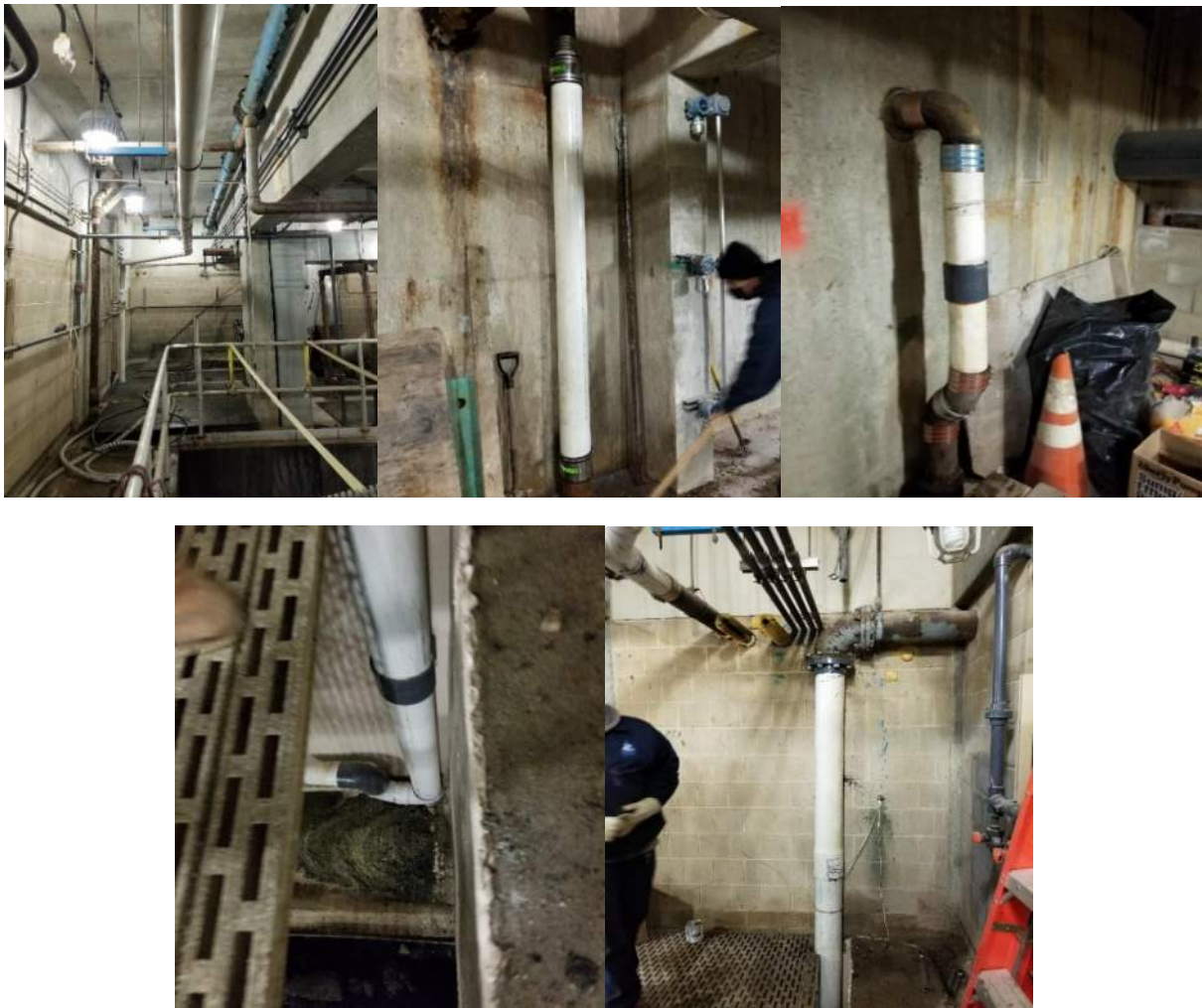
- PC2 torque overload wiring completed by Glenn F and alarm settings confirmed/tested ok.
- Seacoast Supply Marc Roper & Dave Bradford in for influent P2 inspection –an attempt was made to move/adjust the mechanical seal, but it had seized itself onto the pump shaft, and the pump will need to be disassembled and the seal replaced.
- Clean both check valves at PS #3 for each pump and clean the volute for pump #2 on 1/7/21. Pictured: debris removal [left – from check valve; right – from pump [mostly all disposable wipes]



- PS 1 - pump 1: cleanouts pulled on the pump and found rags/wipes stuck between volute wear ring and in the impeller. This debris could not be completely removed, until the pump was disassembled. The entire pump, motor, rotating assembly, and motor stand had to be taken apart so that the debris could be removed. Replaced bolts and washers that connect rotating assembly. The entire project took 4-5 hours to complete, due to low headroom/space in pump room. Pictured: Pump disassembly, debris caught inside pump, case wear ring with wear from grit/sand.



- Repair and reassemble headworks drain piping where it had been diverted during the headworks repair project. Much of the piping was in poor condition. Pictured below: sanitary lines replaced and redirected, grit classifier and second floor drainpipe replaced, outside drainage line by air intake, RST drainpipe below grating into channel, RST drainpipe from second floor. There were other sections replaced that had been removed & repaired [not pictured]



- The RST remained shut down for the winter season. Various repair items being worked on prior to the spring 2021 start up. Pictured: repaired section of drainpipe repair under the RST that was rotted.



- Influent gate: dried epoxy coating on the gate tracks was inhibiting gate travel [opening and closing] after headworks coating work. BB worked with Egan Painting to revisit the plant and pressure wash the tracks to get the gate operation improved. BB & PH did an initial go-pro camera video and photo inspection of the influent gate to show where the “Tnemec” coating debris was hardened in the tracks. Pictured: [before Egan came out with their pressure washer]. There are still a couple of areas where the gate still sticks.



- RAS #3 volute rot hole repairs worked on – cleaned/prepared casing and applied steel & ceramic putty, Pictured: unrepaired, partial repair with steel putty, and final coated volute casing with ceramic putty.



- There was 1 grinder pump replacements performed in January. [see collection system section] Ongoing E-1 pump repairs and replacements continue. All repairs and replacements are done through FR Mahony. The pump failures that have been found recently have been the result of equipment age and clogging of the pumps with non-flushable-type wipes and grease.
- Steve Rose was in to look at WAS & RAS mag meter issues – RAS not coming back online correctly since being off for months - unclear what the issue is, moved the portable doppler meter onto RAS force main and connect to SCADA – OK. WAS meter – repair unlikely.
- Fabricate a 6" truck camlock piece for flush connection [JS] on the sludge hose to the transport tanker. The flush connection flushes the line back into the gravity thickener and allows for easier removal when the tanker is full.



- Flush and disassemble all the 6" hoses from the RAS bypass line that had been running under the driveway and along the catwalk up to aeration tank #1. Approximately 200 ft total distance – 10 sections. Pictured below: before and after 8" RAS line modifications in secondary building. The piping that had been repaired/relined is to the right, on the other side of the wall.



- Set up rack in garage for bins. Stock/store 6" and 4" PVC in blower room. Shop clean-up and sort/store of remaining nuts/bolts on bench. Garage - sort and store 7/8- and 1-inch studs, nuts, washers [extra stock] from HDPE piping, etc. - store in 5-gal pails.



- BB worked with HI Voltage Assoc [electrician] – a new breaker was installed in MDP-5 and new wiring ran 3-phase power to the old MCC bucket and then wired to the VFD. The old MCC bucket 3-phase power was abandoned, but still using the control transformer for start/stop of the motor. Moved over RAS#3 motor wiring back to pump #3 motor and RAS#2 motor tested and put back online after.
- 1/24 - 1:30AM alarm call out for screenings box high level [box was not in use] The box was empty, but some ice got around the level sensor and made a false level – The probe was disconnected, since it was not in use.
- Dealing with cold weather and snow removal issues at various times in January – bisulfite shed heaters, building heaters, PW hoses and freeze ups. Typical for winter operations.
- Paul H worked on scrubber stack H₂S sensors - talked with Mfr. Rep and performed multiple types of calibrations and it appears that sensor readings are more accurate.

- S. Rose on site for Hingham PS work, but they were not ready on Jan 4th. Other work completed: Updated aeration blower on/off schedule, PC torque overload programming, troubleshoot older mag flow meters.



6.2 ASSET MANAGEMENT ACCOUNTS

- Please see the attached summary and planned expenditures for the Asset Management accounts for contract year (6). Most recent through **03/24/21**.
- Note: there are still some large placeholders in the planned maintenance list that are pending and may not necessarily happen under the 06M budget. These projects are being reviewed on a regular basis with the HSD.

7 SAFETY



It is Woodard & Curran's policy to maintain a safe and healthy work environment for every employee and to comply with applicable occupational health and safety regulations.

- No lost time incidents reported for January.
- Monthly PM's - Emergency eyewash and shower inspections, fire extinguisher and emergency lighting inspections completed.
- On-going Coronavirus Covid-19 awareness and updates discussed – daily & as needed. Staff separation planning & updates, facility visitors, personal hygiene & company initiatives. Daily non-contact temp checks for staff & visitors. Work with onsite contractors to ensure that Covid-19 procedures in place and being followed. Updated protocols posted on 10/27/20. Also following MA Governor's mandate for masks to be always worn while working in public buildings/facilities. Completed survey for W&C regarding building ventilation [lack of] & safety concerns as it pertains to Covid-19.
- Continue to work with O&M health & safety, W&C Engineering, to ensure safety protocols in place for the ongoing engineering projects at the facility.
- On-going – daily safety briefing meetings with staff, covid updates & reminders, site specific safety policies for sub-contractors, safety tailgate meetings. Pure Safety topic– January – Guarding floor hole and wall openings.
- Monthly staff safety meeting conducted on 1/28/21. the staff participated virtually via Microsoft Teams. Major topics discussed: Review Lessons Learned for Dec. 2020, repeat of cold weather safety & travel, fixed ladder safety, fatigue, and effect on judgement.
- DBI-SALA winch repairs completed.
- Monthly site safety checklist inspection completed. OSHA Log 200 posted for year 2020.
- Discuss confined space permits for 2020 with safety department – reviewed areas for improvements
- Safety Inspection by insurance company on the compressed air tank in 2nd floor shop area.
- Possible covid vaccination along with Town DPW Dept for staff.

Pictured below: Paul Horigan [O&M Specialist] receiving forklift training by Jody S. Mike Anderson [new hire] also received the training, as well as various site-specific operations training.



- With the completion of the RAS line repairs, the 6-inch hoses were flushed and a better storage system of hoses in the storage box trailer was needed. Potential trip hazards and physical hazards existed with stacked hoses and sewer pipes stored in the box. The sewer pipes were removed and stored in the stacked pipe area outside by the GT's. [pictured: organized storage of 6-inch and 4-inch suction hoses, stacked sewer pipes]



8 STAFF DEVELOPMENT

Training is an important part of any operation to ensure employee health and safety is assured, quality standards are maintained, staff skills are improved, career opportunities become available, and higher productivity is achieved.

Listed is a general outline of training that the staff received over the course of the month:

- Monthly staff Safety training – completed – Pure Safety and monthly safety meeting. W&C “near-miss” incidents at all projects for December discussed.
- Regular operational updates and process control discussions, pump station operations, especially with construction projects going on at the plant and pump stations. Safety Covid-19, dig-safes, etc.
- No off-site training currently due to Covid-19 limitations & conditions. Discuss with staff their training needs and upcoming virtual remote training opportunities offered by NEIWPC. [to be used for training, educational advancement, TCH for wastewater license renewal, and certification exam preparation.
- Working with Kristina Richard for some updated hazardous waste training for the staff – to be planned for Spring 2021.

Staffing related items:

- As noted last month, one staff member, Ryan Holman submitted letter of resignation effective at the end of December. He remains on staff as a part-time employee for weekend support. A new hire was made with the addition of Michael K. Anderson to the staff as O&M Tech 1. He started in mid-January.
- There were two staff members absent for various reasons in January. One person was out due to the Covid virus and returned in late January, and the other person was absent due to a medical issue. The staff labor was supplemented by the addition of the two O&M Specialists to cover all the necessary shifts.
- Staffing schedule – on-going awareness for staff separation, social distancing, face mask use, other safety protocols always.
- No status change - Mass Maritime [MM] internship program on hold until possibly late 2021.
- No changes on the Sunday schedule plan. Coverage by Aram V., Roger B., and Joe B. If Bill or Aram are not scheduled for a Sunday, they will be working on a Monday-Friday schedule.
- As noted above – utilized a high level of O&M tech support in January at the project to cover the project staff coverage needs – utilized Paul Horigan and Jody St. George.
- Work with W&C IT department to get new android tablet set up for regular staff, part-time, and O&M assistance.

9 COLLECTION SYSTEM

9.1 WET WELL CLEANING

The actual schedule for wet well cleaning: May 2020 to April 2021:

(X-Cleaned) - (Orange – Inspected) - (Green – See notes) - (blank – no work done)

Frequency of cleaning	Pump Station							
	A	1	3	4	5	6	9	D
May, 2020	X				X			
June, 2020								
July, 2020	X			X				
Aug., 2020								
Sept. 2020	X							
Oct.,2020	X			X	X			
Nov, 2020								
Dec., 2020	X			X	X			
Jan., 2021								
Feb., 2021								
March 2021								
April 2021								

All pump stations except for Pump Station 3 and Station D have an aerator/mixer in the wet wells.

9.2 COLLECTION SYSTEM MAINTENANCE

Woodard & Curran assisted/conducted camera work and sewer system support in the Hull collection system at the following areas during the month of January.

- In-Pipe units – on-going battery change out, dosing unit repairs & cleaning and inspection. Circuit board troubleshooting, dosing pump repairs and replacement as needed. Working with “In-Pipe” on these issues.
- All Pump station generators loaded, and non-loaded generator runs were done for the month.
- All Pump station wet wells were inspected in January.

- Grinder pump summary:
 - 68 Salisbury St – found no power to panel from house breaker, had been off for a long time. Cleaned area, pumped out chamber, check plug connection, energized pump, and equipment OK
 - 26 Rockview Rd – pump replaced
 - 1 Dellawanda – investigate back up call - Grinder pump found to be ok. Issue was before the E-1 pump chamber, blockage in the lateral line - homeowner to call Roto-Rooter.

Dig Safe mark outs:

- On-going Dig-Safe mark outs. These are completed throughout the Town of Hull to assist/facilitate scheduled and emergency gas repairs, broken water mains, roadway paving projects, and other residential and town projects and are listed in the UC summary.

Collection system support: Noticing significant increase in backup and blockage call outs and the amount of time and effort needed for staff weekly involvement. Below is an attempt to capture some of this effort at various call out locations.

- 99 Hampton Circle – multiple visits to check street, use push camera in street to locate lateral tie in. Checked street and found to be normal and recommended drain companies.
- Ocean Ave/Main Street [1/7] – sewer blockage call – Hoadley was called in and jetted the line. Blockage found to be in short section of 6-inch DI going onto Main street - jet vac done upstream and cleared 210 feet of pipe. Their jetter hose nozzle got stuck in the DI section where tuberculation existed, and the pipe reduced down to 3-inch pipe diameter. They had to pull out their jetter hose nozzle with extreme force using a chain and their truck. pic
- Sewer back-up call on 1/1/21 at 28B School St. BB/DW responded and inspected MH's [not surcharged] Advised the homeowner to contact a drain cleaning company.
- 2 Christine RD back up call on 1/3/21 Investigated by DW and AV – sewer main was clear, probable lateral issue on homeowner property.
- Hingham Pump Station now sending flow data - since Friday 1/8 after Steve Rose's site visit.
- 9 Glover Ave - inspect manhole where recent blockages have been seen/reported. 2 visits
- Maple Lane for dig safe mark outs, no sewer known to be on this street [upcoming water work]
- UC lateral tie cards uploaded where requested.
- Complete emergency dig safe requests where able to – most due to water main breaks/emergencies.
- Backup call to Hingham Savings [401 Nantasket Ave] to support Hoadley - dye test done, and the lateral was OK after their cleaning.
- Marginal Road drainage outfall – assist where requested for drainage pipe jetting.

Collection system work is being documented and tracked in Utility Cloud and a summarized report for the month of January has been included as an attachment with the Monthly Operating Report.

10 PROJECT MANAGEMENT & ADMINISTRATION



10.1 ON-GOING PROJECTS AND SUPPORT ITEMS

January updates:

- Ongoing - PS9 & influent/secondary engineering projects - review DBR comments and provide feedback and participate in calls as available.
- Discuss deragger options at PS#3 due to increased pump ragging issues. Frequency of significant cleaning every 4-6 weeks. Had call with Mechanical Solutions Inc to discuss application and information needed to get a proposal. Discussed high flow situations where it would be beneficial to bypass the deragger function.
- BB investigated a corrective action plan for the Ocean Ave sewer line that is tuberculated and has a restricted section. Contacted Truax as they have a small trailered jetter unit that is used on smaller pipes. They would use chain knocker attachments with a spinning cable that contains carbide tips.
- Reviewed the additional water used during the Operations building bypass & presented a summary and cost splitting of the water invoice.
- Continued work with the Town, W&C Engineering, and D&C Construction to complete headworks project and pump station concrete repairs - other concrete work above the aerated grit tank remaining. Assisted on Haz waste questions and areas where pick up of materials needed. Pump Station visits to inspect concrete work, various leaks, cleaning needed.
- On Hold: Sludge holding tank #1, the installation of diffuser piping is under consideration. A recent tank inspection was done and W&C O&M Tech support staff would perform the demolition work. Upon approval, an inventory of parts on site would be made, with an update on the additional parts/items

needed. An update on the existing inventory of parts will be made with a recommended purchase cost and presented.

- No updates on the old SC gear boxes that NEPV has for evaluation and possible repair.
- Scope of work for PS 4 needs was reviewed and it was decided that the preferred approach would be to delete any remaining PS 4 work from D&C contract and Operations would solicit proposals from other contractors to perform the work that was intended to be done by D&C. Operations will compile the scope of work, plans and site visit coordination with preferred contractors and get quotes and then determine whether work would be done by D&C Construction or another contractor.
- Continued work on gathering the additional information related to the radio/communications proposal with pump stations and the plant Scada system. This research was a follow up to the discussion and questions that came up with the HSD. After reaching out to the SCADA Team for their assistance, the proposed project approach was worked on for presentation in early February.
- BB coordinated with engineers on comments and hydraulic model verifications for influent pumping and force mains.
- A few items related to CPI's assessment of underground piping reviewed and expected life expectancy. Also verify in the secondary effluent manhole that the internal drop pipe in the left corner is not active and targeted for removal [old supplemental town water feed for incinerator water]
- AV/BB coordination calls with Eng. on DBR comments for Town & Weston & Sampson, BB assisted John & Brian on a tour of the facility for Weston & Sampson Engineers. Also, attend PS5 and effluent pump station meetings with W&C design group, D&C, and Town
- Provide berm project support as needed for questions,
- Electrical use spreadsheet – update information for the Town. As part of a State energy grant that Hull received, the spreadsheet would get updated monthly and then be forwarded to forward to Frank C. Going forward, Mike A from the staff will input the information into a State website for tracking purposes as requested by the grant.
- AQUASIGHT APOLLO Software Platform - Annual Subscription Service 11/1/2020 to 10/30/21 Annual Subscription Service fee includes APOLLO technology and infrastructure management, new technology, standard feature upgrades, additional training if required, periodic check-ins, data quality and stream checks, help desk, Mobile app access. Town has renewed and Woodard & Curran will reimburse the Annual Service Fee.

Asset Management Accounts - Year 6							
		Actual to date			Projected for Final Estimate		
Account		Budgeted Amount	Spent to Date	Delta	Projected costs and incl PO's	Final est	Delta
06M-101A	Preventive Maint	\$210,555.68	\$103,159.61	\$107,396.07	(\$5,850.00)	\$97,309.61	\$113,246.07
06M-102B	Capital and Major Repairs	\$140,000.00	\$57,756.05	\$82,243.95	\$138,652.00	\$196,408.05	(\$56,408.05)
06M-103A	Major Sub Contractors	\$178,370.75	\$158,161.47	\$20,209.28	\$28,150.00	\$186,311.47	(\$7,940.72)
blank					\$0.00		
	Asset Management	\$528,926.43	\$319,077.13	\$209,849.30	\$160,952.00	\$480,029.13	\$48,897.30

\$209,849.30

Budget expended	Time Status	
	NOW=	3/24/2021
	Start	5/1/2020
49.0%	89.8%	40.8%
41.3%	89.8%	48.5%
88.7%	89.8%	1.1%
60.3%	89.8%	29.4%

06S	D Street	\$7,500.00	\$4,168.42	\$3,331.58	\$0.00	\$4,168.42	\$3,331.58
-----	----------	------------	------------	------------	--------	------------	------------

55.6%	89.8%	34.2%
-------	-------	-------

06C	Odor Control Chemicals	\$100,000.00	\$98,672.00	\$1,328.00	\$0.00	\$98,672.00	\$1,328.00
-----	------------------------	--------------	-------------	------------	--------	-------------	------------

98.7%	89.8%	-8.9%
-------	-------	-------

For JANUARY 2021 M.O.R.

Hull 2019 - 06M Projects, Tasks, and Needs - 05-06-2020 (AV)

Maintenance Account - Year 6 - 05_01_20 to 04_30_21

\$160,952.00

3/24/2021 16:10

Priority	Description	Status	completed	Task	Estimates & funds remaining	Final Completed Cost	Lead	Comments
1	Mechanical Work Labor	On Going		101A	\$8,000.00			Jody St. George, and WC Support Staff - estim \$3000/month; Total budget \$36,000; incl annual scrubber cleaning, remove old blowers [mech]; Adj made 9/9/20; adj 10/15; adj 11/25; Adj 1/6/21; Adj 1/28/21; adj 3/17/21
1	Pump and Motor Repairs	On Going		101A	\$4,500.00			to keep existing equipment running - utilize various outside contractor repair shops, new purchases. Duperon motor, RST eurodrives, orig budget \$20,000; adj 10/15; RAS motor rewinding, influent motor rewind. Adj remaining \$5 10/29; Infl Pump #2 repairs - pending impeller repair & motor rewind [11/17]; Adj 11/25; adj 1/6/21; adj made 3/17
1	Lubricants	On Going		101A				Various Suppliers for oil and grease. Budgeted \$3500; adj 11/17; adj to \$1,500 1/28; Adj 3/3. Ordered additional lubricants March 2021.
1	Generator Repairs	On Going		101A		\$2,760.80		General Repair Work - Original Placeholder \$3,000- PS4- \$2,800 & other; to date cost noted
1	Fire Alarm Inspections and Service	On Going		101A	\$850.00			Semi Annual - Hart Security [October & April, central station, & Service] Orig budget \$3000, as of 11/17 \$1,500 pd.; adj 11/25;
1	Universal waste disposal	Pending		101A				Placeholder - \$500; zero the budget, will incur if needed
1		Pending		101A				
1	Service the Forklift	completed		101A				\$400 - Annual cost - outside vendor; work completed. Waiting for report and invoice. 11/17 service completed.
1	Overhead Hoist Inspection	Pending		101A	\$1,500.00			Annual task - Applied Dynamics - PO usually is issued in April.
1	Flow meter verification and calibration	Pending		101A				Annual - Ray Ferland 1 visit annually Aug/Sept. On hold as new effluent flow meter set to be installed April 2021 [orig budget \$1,000
1	Facility Building - Roof Inspection	Pending		101A				\$2800 Annual Placeholder - Established contract with Tecta America [Visit #3] Bill to be paid late March.
1	Pump Station #9 - Repairs Immediate	pending		101A				New valve, new check valve, replace pump assembly - Jody St. G. to assist; items rec'd [used up approx 50% of orig 4,000]; pending to be used if needed.
1	Jerome H2S Meter Inspection	Pending		101A	\$1,100.00			\$1100 Placeholder for Annual Inspection - sent out includes annual service \$1100
1		Pending		101A				
1	butterfly valves for PW pumps 4 valves	completed		101A				purchase and install - expect November installation [staff & O&M] 11/17 - completed November 2020.
1	Hoisting platform ladder for the AST	Completed		101A				Completed, purchased for use with screenings box - \$600.00
1	Weather Station	completed		101A				Installed by Glenn F, June 2020, programming by SCADA group
1	Janitorial Supplies	On Going		101A				Estimated annual expenditures - Orig budget \$4,000; adj 4 months - 9/9; adj 10/15; adj 1/6/21; adj 1/28; Adj budget to zero 3/24/21
1	Backflow device testing	Pending		101A				done by, 3rd party - orig budget \$400
1	Manhole Inspections	Pending		101A				As required, and/or scheduled

FOR JANUARY 2021 M.O.R.

Hull 2019 - 06M Projects, Tasks, and Needs - 05-06-2020 (AV)

Maintenance Account - Year 6 - 05_01_20 to 04_30_21

\$160,952.00

3/24/2021 16:10

Priority	Description	Status	completed	Task	Estimates & funds remaining	Final Completed Cost	Lead	Comments
2	General mechanical and electrical items/supplies	On Going		101A	\$1,500.00			Grainger, FWWebb, EJP, Hoadley, McMasterCarr, etc; orig budget \$18,000. Adj 9/9/20; adj 10/15; adj 10/29; adj 1/6/21; adj made 1/28; adj made 3/17
2	Vibration Analysis Survey	Pending		101A	\$2,000.00			Annual - 2 to 3 Days - Aeration System Blowers, Pump Station Pumps, etc./tbd; possibly Paul H from W&C; adj budget to \$2000 1/6/21. Could be 3-4 days of work \$4000.
2	Valves	Pending		101A				Replacements and/or Service - On-Going - As Needed; Placeholder - Cut planned budget to 2k 10/15; 4-inch valves ordered. May be some additional valves needed for PS 4; adj for plug valves received in Feb/Mar.
2	Hoses	completed		101A				Replacements and/or Service - On-Going - As Needed; Purchased three 6-inch hoses for the RAS bypass. [\$1800]; orig buget \$3000; addit 6" discharge hoses purchased Dec 2020
2	Sump Pumps	completed		101A				Replacements and/or Service - On-Going - As Needed - Cut budget from 1200 to \$600 11/17; adj 1/6/21 to zero; Purchasing as needed.
2	Install 6" or 8" drop pipes in secondary clarifier #1 and #2 OR 8-inch drop pipe for infil manhole	On Going		101A				Targeted budget \$2,000 - in-house staff to fabricate, ? go to 8" pipe? If needed??On hold, since effl MH work will have a standpipe for bypass pumping. Retarget \$\$ for infil MH 8-inch drop pipe, ordered 3/4/21; PO is in the checkbook. \$1,300
2	Effluent pump room pump bracket testing	Completed		101A				by Lightship Group - completed Aug 2020. On purchase order cost \$950]
2		Pending		101A				
2	Misc. Materials	On Going		101A	\$200.00			Hardware Store - \$200.00 per month - reoccurring expense; orig budget \$2,400; adj to \$1,000 on 11/17; adj 1/6/21; adj 1/28; adj 3/17
2		Pending		101A				
2	PS 1 impellers/flow	Pending		101A				look at increasing size of impellers, after Gunrock work completed; on hold due to area low flows [\$5,000]
2	Lift Station A	Pending		101A				Pump efficiency lower than desired - new pump or impeller & mech seal
2		Pending		101A				
3	Install new aeration channel angle iron for a slide gate	Pending		101A				Jody S to install - 2 days, if we do \$2,500 estimate, or push to Engin project
3	Install a flow meter on the generator cooling water system - plant water	Pending		101A				Have an estimate [Oct 2018]; possible after 5/1/20
3	Lockers for the staff - Install	On Going		101A	\$1,500.00			Additional lockers ordered to replace those removed years ago; pending delivery
3	Purchase (1) spare Euro drives for the RST drum drive	Completed		101A				spare part item now in stock [\$800]
3	Purchase an LMI pump for the RST	Completed		101A				spare part item now in stock [\$1700]
3	Purchase an equipment lift or gantry	Pending		101A				planned cost \$2,500 for moving elec hoists around, & other equip; delete item for now - 1/6/21

Hull 2019 - 06M Projects, Tasks, and Needs - 05-06-2020 (AV)

Maintenance Account - Year 6 - 05_01_20 to 04_30_21

\$160,952.00

3/24/2021 16:10

Priority	Description	Status	completed	Task	Estimates & funds remaining	Final Completed Cost	Lead	Comments
	Purchase Dehumidifiers for pump stations LS A & PS 4, PS 5, PS 6	Pending		101A	\$4,400.00			for 4 pump stations - A, 4, 5, 6
		Pending		101A				
	Lab Equip Calibration	Pending		101A	\$600.00			Annual service \$600- usually Jan/Feb.
		Pending		101A				
	Mech seal[s] for RAS pumps 1 & 2	Pending		101A	\$2,000.00			Orig budget \$2,000 - for RAS pumps 1 & 2 - pending, but will need to do.
		Pending		101A				
	Vaughan chopper pumps - new pump ends for PSL & WAS	On Going		102B	\$15,950.00			Had Rep in late Feb 2021 to look at all chopper pumps and will provide updated quotes for parts needed. \$\$ TBD. Recommending pump replacement for PSL pump #1; PO issued for \$15,950
	Purchase Two 6" valves for PS 4	Completed		101A				Estim cost \$1450; Invoice paid.
	Springs for check valves	Completed		101A				Original budget \$400; Purchased
1	Tecta Roof Repairs - proposed per 2020 inspection	Pending		102B	\$8,000.00			Estim: \$8,000 - TBD when work to be scheduled; will be in 2010 06M.
1	(GT) Steel rake mechanism inspection and needed repairs	completed						to be completed by NEPV under critical spares bond account. Completed at end of November.
1	(SC#1) Steel rake mechanism inspection and needed repairs	Completed						completed by Lydon under critical spares bond account.
1	(SC#2) Steel rake mechanism inspection and needed repairs	Completed						completed by Lydon under critical spares bond account.
1	Pri D-Box repairs	Pending		102B				possibly by D&C Construction as part of structural repair project. Estim \$15,000.
1	Replace scrubber recirc pump	completed		102B		\$2,410.80		spare pump ordered & received October 2020, bill pd Nov2020.
1	Sludge transfer pump #1 rebuild	Pending		102B	\$5,000.00			Estim - parts - \$5,000 and rebuild pump needed. Still on target for rebuild 3/4 update. 3/4/21: Update: Unit sent out for evaluation. May be obsolete and unrepairable.
1	Dynablend System is obsolete - mixing valve worn - need in kind or like system	Pending		102B				May or may not proceed with replacement, since unit still functioning. and polymer addition point changed and yielding good results. Shutting down in December 2020. Cost \$12,000 might be held off. Took off list 3/24/21.
2	grit classifier spare parts	Pending		102B	\$3,500.00			based on limited spare parts currently. Yet to be ordered [11/17]On hold pending grit screw operability 3/17;
2	Pump Station Ladders	Pending		102B				We are complete except for PS #9; nothing further planned for PS 9, since new pump station planned.
2	Sanitaire hardware purchase for aer tk 1	Completed		102B		\$3,054.03		Purchased July 2020
3 of 62 3/24/2021	Replace 6" potable water valve in basement and misc. valves	Pending		102B	2020_05_01_06M_Checkbook_YTD			While doing project check/replace 1 1/4 valves as needed - Requires a water shutdown, may hold until after 5/1/20; orig planned cost \$3,000.

06M Planned Costs

Hull 2019 - 06M Projects, Tasks, and Needs - 05-06-2020 (AV)

Maintenance Account - Year 6 - 05_01_20 to 04_30_21

\$160,952.00

3/24/2021 16:10

Priority	Description	Status	completed	Task	Estimates & funds remaining	Final Completed Cost	Lead	Comments
2	Install (4-5) additional yard hydrants	completed		102B		\$10,563.64		original budget \$512,000 - hydrants already purchased, and materials & contractor installation [2 days]; 1st day completed Aug 2020 - \$5194.88. Second day planned early October - \$5,368.76. 3 replacements planned. Completed 10/27; Need to roll up final costs. Hydrants and paving, Nov2020.
	Remaining yard paving - plant - WAS/PSL and by fuel tank	completed		102B		\$4,362.77		For plant work
2	PS 4 valves, check valves - installation	On Going		102B	\$7,500.00			Placeholder - After structural work, replace. Valves and check valves. May be a changeorder for D&C Constr[\$4,000] Also 1 day for pump & hauling 2 trucks [\$3200]; More \$\$ will be needed here, due to scope changes. On hold 3/17
3		Pending		102B				
3	Influent Distribution Box - Aerate Primary/Influent D-Box/Overflow Project	Pending		102B				Contracted Project - need State Approval - Facility/Process modification. Facilities Plan possible modification
3	Odor log data loggers & calibr kit	Pending		102B				Current units obsolete and not supported by company, possibly look at under 05C if funds avail; remove the \$6,000 on 2/6/20 - 06C or 06M
1	Jerome meter replacement	Pending		102B				replace unit, if done \$11,000
	Rotating Sludge Thickener - Thickened Sludge Pump - rotor/stator	Completed		101A				purchased spare stator approx cost \$900.
	D'Allessandro - WAS line replacement & gate valve	Completed		102B		\$16,018.78		Work Authorization submitted 10/14/20; paid Nov2020.
	GT sandblasting/painting	Pending		102B				Estimate \$45,000 - would need to go out for competitive bid request
		Pending		102B				
	Truax \$\$ unspent	On Going		101A	-\$34,000.00			
	Electrical LS A hook up	completed		102B		\$1,182.28		estimate look at 2 options - going with option one for new hook up only; early October planned. Completed Nov2020. Bill to be paid.
1	Electrical Work	On Going		103A				Electricians: Glen Fellows, HiVoltage, other; remv old blowers, lighting, sec bldg elec outlets - \$2,000/month; orig budget \$25,000; adj YTD - funds left; adj 9/30; Adj 10/15/20; adj 11/17/20; adj 1/6/21; clear remaining budget.
1	SCADA Work	On Going		103A				Steve Rose and the SCADA Support Team; orig budget \$25,000; reduce by \$6K on 9/9/20; adj 1/28; clear this budget, and costs will post as they are incurred. [1/28]
1	E-One Repairs and Replacement	On Going		103A				Based on historical costs. E1 repairs where cost-effective & new replacement pumps; control panels, other equip; Orig budget \$25,000; adj made 1/6/21; adj made 1/28; adj 3/17 - reduce budget to zero, with recent purchases/repairs
1	Annual Generator inspection	completed		103A		\$4,900.00		Annual - Highland Power/ME Electrical Power - Generator PM/Service work - due in November, Early Dec target completion. Completed.
1	Automatic Transfer Switch inspection and servicing	Pending		103A	\$2,400.00			Annual Service planned for April Highland Power - NETS - Transfer Switch; Part of Gen Svc PO.
1	Wetwell Inspections and Cleaning - Pump Stations	On Going		103A				As required, plant or pump stations; orig budget \$10,000; reduce to zero on 9/9

Hull 2019 - 06M Projects, Tasks, and Needs - 05-06-2020 (AV)

Maintenance Account - Year 6 - 05_01_20 to 04_30_21

\$160,952.00

3/24/2021 16:10

Priority	Description	Status	completed	Task	Estimates & funds remaining	Final Completed Cost	Lead	Comments
1	Wetwell Inspection and Cleaning- Plant	On Going		103A				
1	Sewer Line Cleaning - Emergencies	On Going		103A				Placeholder - As required for various sub-contractors; could be Hoadley, Truax, WindRiver, BMC, or other, collection system & plant; orig budget \$10,000 ; YTD already over \$10k.
1	Collection System - emerg & unplanned calls - Jetting & CCTV work	On Going		103A	\$2,100.00			Budget - orig \$20,000; reduce it to \$10,000; adj down \$3,100 1/28; Use of Hoadley Vector truck through early march 2021. Adj 3/17
1	Collection System - Jetting Work & CCTV Truax \$35,000	On Going		103A				up to 35K - roadway proj work related - TBD for contractor [Truax] PO was issued. 11/25 - no work completed to date. Requested by HSD.
1	Aer tank repairs [labor]	Completed		103A				2 days - millwrights - Lydon \$3800
1	Pump Station communication - changover to radio - phase 1	Pending		102B	\$74,602.00			Equipment purchase to come from 06M/07M on the Critical Spare List; based on latest quote from Doug Tirrel. Updated memo Nov 2017
1	Pump Station communication - changover to radio - phase 2	Pending		102B				Equipment purchase to come from 06M/07M on the Critical Spare List; based on latest quote from Doug Tirrel. Updated memo Nov 2017
1	Pump Station communication - changover to radio - phase 3	Pending		102B				Equipment purchase to come from 06M/07M on the Critical Spare List; based on latest quote from Doug Tirrel. Updated memo Nov 2017
1	Pump Station communication - changover to radio - phase 4	Pending		102B				Equipment purchase to come from 06M/07M on the Critical Spare List; based on latest quote from Doug Tirrel. Updated memo Nov 2017
2	Pump Station Communication - electrical contractor services	Pending		102B	\$10,000.00			Electrician costs - Install antennae, and related components to allow for SCADA tie in.
2	Regen Aeration System - Pump Station #5	Pending		103A				Orig est \$1,500 -Tie into the SCADA system - Glen Fellows; may wait until after 5/1/20; on hold.
2	Dehumidifiers at four pstat - install	Pending		103A	\$8,000.00			approx 2K per station - PS A,4, 5 & 6
2	SHT1 - demo of equip, air piping & diffuser install/materials	Pending		103A				In-house O&M project and staff labor \$10,000, demo of tank equip \$5,000; air piping \$10,000; materials \$5,000 - rough estimate - future needs. Removing these \$330K [3/24/21]
2	Generators - Load Bank Testing Pump Stations	Pending		103A	\$6,300.00			Look at under 06M - PS#1, PS#3, PS#4, PS#5, PS#6, and PS#9 [\$3,000] Looking to do spring 2021. 2 units/day. Have not been to date.
	Ted Berry - RAS line repairs	completed		102B		\$9,950.00		PO issued for anticipated repairs in mid-December, work completed, waiting for final bill
	Lydon Mech work - screenings box and Sec Bldg wye	completed		103A				Work completed - October 2020 - \$3,439.98 & \$2,767.28
	CPE - ABBA RAS pump rotating assembly	On Going		102B				proposed cost \$8858 - on a purchase order.
	Generators - Load Bank Testing at plant	Pending		103A	\$4,800.00			Gen #1 and #1 - last done 4 years ago
	Highland Power/MSElectric&Power - Servicing the heat exchangers, fuel filters, etc	Pending		103A	\$4,550.00			Per proposal \$4,550.00
	Front building window repairs	Pending		101A				To be done under Engin project
1	Low pressure sewer valve box insp & mtce	Pending		103A				placeholder for contractor O&M inspections and potential repairs; Looking at Rosano-Davis or another contractor & W&C to investigate; remove placeholder budget of \$7,500 on 1/28
5 of 6	Aeration Tank #3 - installation of new diffusers and piping grid	Pending		102B	2020_05_01_06M_Checkbook_YTD			\$50,000 Placeholder cost in the event needed

06M Planned Costs

Hull 2019 - 06M Projects, Tasks, and Needs - 05-06-2020 (AV)

Maintenance Account - Year 6 - 05_01_20 to 04_30_21

\$160,952.00

[3/24/2021 16:10](#)

Priority	Description	Status	completed	Task	Estimates & funds remaining	Final Completed Cost	Lead	Comments
	LS A pumps -	Pending						
	LS A P2 suction valve replacement	Pending						
	Deragger PS3	On Going		102B	\$9,600.00			2 units - for installation at PS 3; electrician will be additional - PO to be issued
1	Garage back side overhead door replacement	Pending		102B	\$4,500.00			Need to solicit estimate for replacement.[estimate if approved]
TOTAL					\$160,952.00			

Date	Asset ID	Asset Description	Asset Class	Name	Workflow Class	View
1/29/2021 11:22	15-142	765 NANTASKET AVE	Hull Parcels	Sutton, Eric	Generic WO	View
1/26/2021 15:12	35-005	99 HAMPTON CIRCLE	Hull Parcels	Sutton, Eric	Generic WO	View
1/19/2021 14:10	MH-20912	MH-20912	Sanitary Manhole	Sutton, Eric	Generic WO	View
1/1/2021 13:16	MH-30125	MH-30125	Sanitary Manhole	Boornazian, Bill	Generic WO	View
1/18/2021 7:13	26 Rockview Rd	26 Rockview Rd Grinder Pump	Hull Grinder Pumps	Sutton, Eric	Hull - Grinder Pump Maintenance	View
1/22/2021 12:05	68 Salisbury St	68 Salisbury St Grinder Pump	Hull Grinder Pumps	Boornazian, Bill	Hull - Grinder Pump Maintenance	View
1/7/2021 15:55	Bacteria UNIT #21	UNIT #21	Hull In Pipe Bacteria Unit	Sutton, Eric	Hull - In Pipe Bacteria Units	View
1/22/2021 14:00	Bacteria UNIT #21	UNIT #21	Hull In Pipe Bacteria Unit	Sutton, Eric	Hull - In Pipe Bacteria Units	View
1/7/2021 15:50	Bateria UNIT # 8	UNIT # 8	Hull In Pipe Bacteria Unit	Sutton, Eric	Hull - In Pipe Bacteria Units	View
1/7/2021 15:45	Bateria UNIT #1	UNIT #1	Hull In Pipe Bacteria Unit	Sutton, Eric	Hull - In Pipe Bacteria Units	View
1/7/2021 15:51	Bateria UNIT #10	UNIT #10	Hull In Pipe Bacteria Unit	Sutton, Eric	Hull - In Pipe Bacteria Units	View
1/7/2021 15:54	Bateria UNIT #11	UNIT #11	Hull In Pipe Bacteria Unit	Sutton, Eric	Hull - In Pipe Bacteria Units	View
1/7/2021 15:57	Bateria UNIT #14	UNIT #14	Hull In Pipe Bacteria Unit	Sutton, Eric	Hull - In Pipe Bacteria Units	View
1/7/2021 15:56	Bateria UNIT #15	UNIT #15	Hull In Pipe Bacteria Unit	Sutton, Eric	Hull - In Pipe Bacteria Units	View
1/7/2021 15:55	Bateria UNIT #16	UNIT #16	Hull In Pipe Bacteria Unit	Sutton, Eric	Hull - In Pipe Bacteria Units	View
1/7/2021 15:51	Bateria UNIT #17	UNIT #17	Hull In Pipe Bacteria Unit	Sutton, Eric	Hull - In Pipe Bacteria Units	View
1/7/2021 15:52	Bateria UNIT #18	UNIT #18	Hull In Pipe Bacteria Unit	Sutton, Eric	Hull - In Pipe Bacteria Units	View
1/7/2021 15:53	Bateria UNIT #19	UNIT #19	Hull In Pipe Bacteria Unit	Sutton, Eric	Hull - In Pipe Bacteria Units	View
1/7/2021 15:46	Bateria UNIT #2	UNIT #2	Hull In Pipe Bacteria Unit	Sutton, Eric	Hull - In Pipe Bacteria Units	View
1/7/2021 15:54	Bateria UNIT #20	UNIT #20	Hull In Pipe Bacteria Unit	Sutton, Eric	Hull - In Pipe Bacteria Units	View
1/7/2021 15:46	Bateria UNIT #24	UNIT #24	Hull In Pipe Bacteria Unit	Sutton, Eric	Hull - In Pipe Bacteria Units	View
1/7/2021 15:52	Bateria UNIT #3	UNIT #3	Hull In Pipe Bacteria Unit	Sutton, Eric	Hull - In Pipe Bacteria Units	View
1/22/2021 13:59	Bateria UNIT #3	UNIT #3	Hull In Pipe Bacteria Unit	Sutton, Eric	Hull - In Pipe Bacteria Units	View
1/7/2021 15:47	Bateria UNIT #4	UNIT #4	Hull In Pipe Bacteria Unit	Sutton, Eric	Hull - In Pipe Bacteria Units	View
1/22/2021 13:57	Bateria UNIT #4	UNIT #4	Hull In Pipe Bacteria Unit	Sutton, Eric	Hull - In Pipe Bacteria Units	View
1/7/2021 15:48	Bateria UNIT #5	UNIT #5	Hull In Pipe Bacteria Unit	Sutton, Eric	Hull - In Pipe Bacteria Units	View
1/7/2021 15:48	Bateria UNIT #6	UNIT #6	Hull In Pipe Bacteria Unit	Sutton, Eric	Hull - In Pipe Bacteria Units	View
1/7/2021 15:49	Bateria UNIT #7	UNIT #7	Hull In Pipe Bacteria Unit	Sutton, Eric	Hull - In Pipe Bacteria Units	View
1/26/2021 11:03	04-088	33 NEWTON ST	Hull Parcels	Sutton, Eric	Hull - Markout	View
1/19/2021 12:00	05-082	7 MT PLEASANT AVE	Hull Parcels	Boornazian, Bill	Hull - Markout	View
1/22/2021 13:02	10-005	67 PT ALLERTON AVE	Hull Parcels	Sutton, Eric	Hull - Markout	View
1/28/2021 14:23	12-019	21 BRADFORD AVE	Hull Parcels	Sutton, Eric	Hull - Markout	View
1/14/2021 12:29	13-045	4 T STREET	Hull Parcels	Sutton, Eric	Hull - Markout	View
1/19/2021 9:24	19-128	624 NANTASKET AVE	Hull Parcels	Sutton, Eric	Hull - Markout	View
1/19/2021 9:27	20-005	625 NANTASKET AVE	Hull Parcels	Sutton, Eric	Hull - Markout	View

1/21/2021 15:05	27-111	401 NANTASKET AVE	Hull Parcels	Sutton, Eric	Hull - Markout	View
1/21/2021 11:31	31-005	220 NANTASKET RD	Hull Parcels	Sutton, Eric	Hull - Markout	View
1/14/2021 13:44	51-097	16 MEADE AVE	Hull Parcels	Sutton, Eric	Hull - Markout	View
1/3/2021 12:49	53-001	89 ATLANTIC AVE	Hull Parcels	Varjabedian, Aram	Hull - Markout	View
1/24/2021 12:10	53-031	126 ATLANTIC AVE	Hull Parcels	Sutton, Eric	Hull - Markout	View
1/5/2021 15:05	MH-20250	MH-20250	Sanitary Manhole	Boornazian, Bill	Hull - Markout	View
1/7/2021 19:03	10023	Sewer 6" VC Pipe on MAIN ST.	Hull Sewer Main	Boornazian, Bill	Hull - Sewer Backup	View
1/21/2021 14:33	27-111	401 NANTASKET AVE	Hull Parcels	Boornazian, Bill	Hull - Sewer Backup	View
1/8/2021 15:29	43-070	1 DELLAWANDA RD	Hull Parcels	Boornazian, Bill	Hull - Sewer Backup	View
1/6/2021 13:17	49-083	28 B SCHOOL ST	Hull Parcels	Boornazian, Bill	Hull - Sewer Backup	View
1/3/2021 15:25	56-020	2 CHRISTINE RD	Hull Parcels	Varjabedian, Aram	Hull - Sewer Backup	View
1/26/2021 15:05	MH-20154	MH-20154	Sanitary Manhole	Boornazian, Bill	Manhole Inspection Hull	View
1/21/2021 11:24	MH-20521	MH-20521	Sanitary Manhole	Sutton, Eric	MH Frame & Cover Inspection	View
1/21/2021 14:56	MH-20712-1	MH-20712-1	Sanitary Manhole	Sutton, Eric	MH Frame & Cover Inspection	View



Maintenance History Report

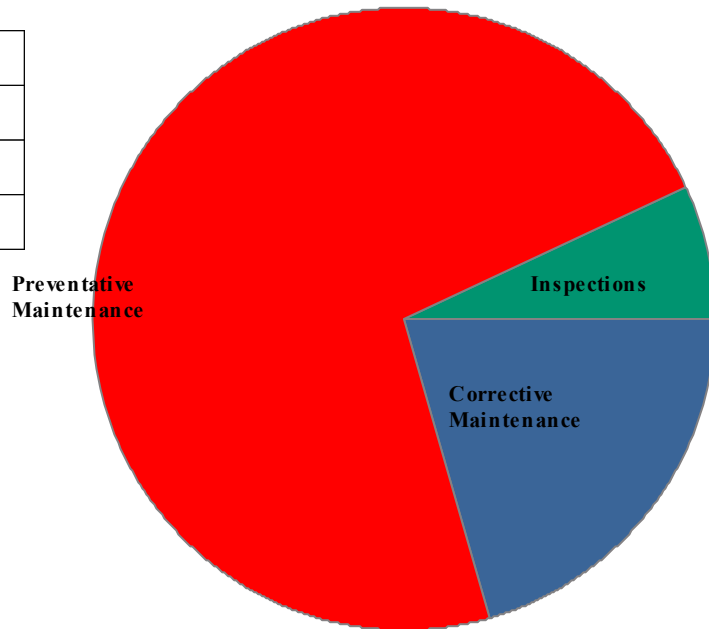
Hull Wastewater

Start Date: 1/1/2021

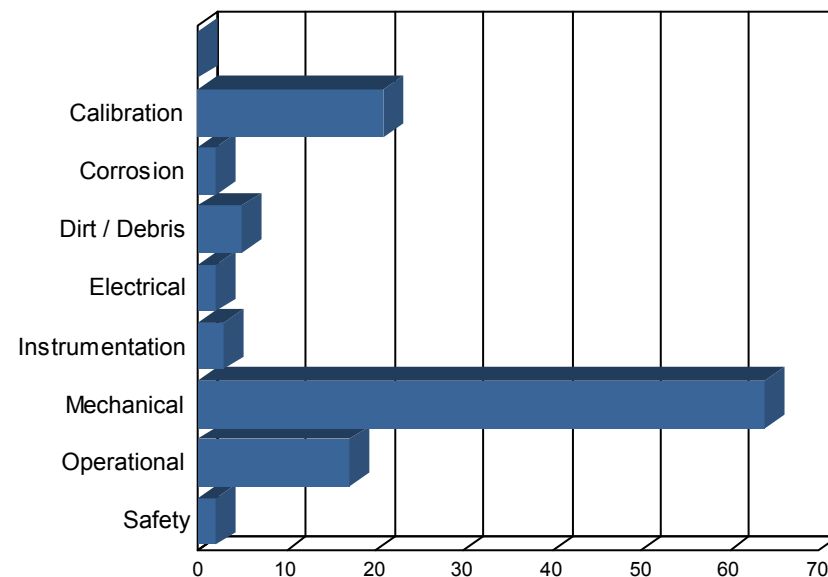
End Date: 1/31/2021

Work Order History By Type

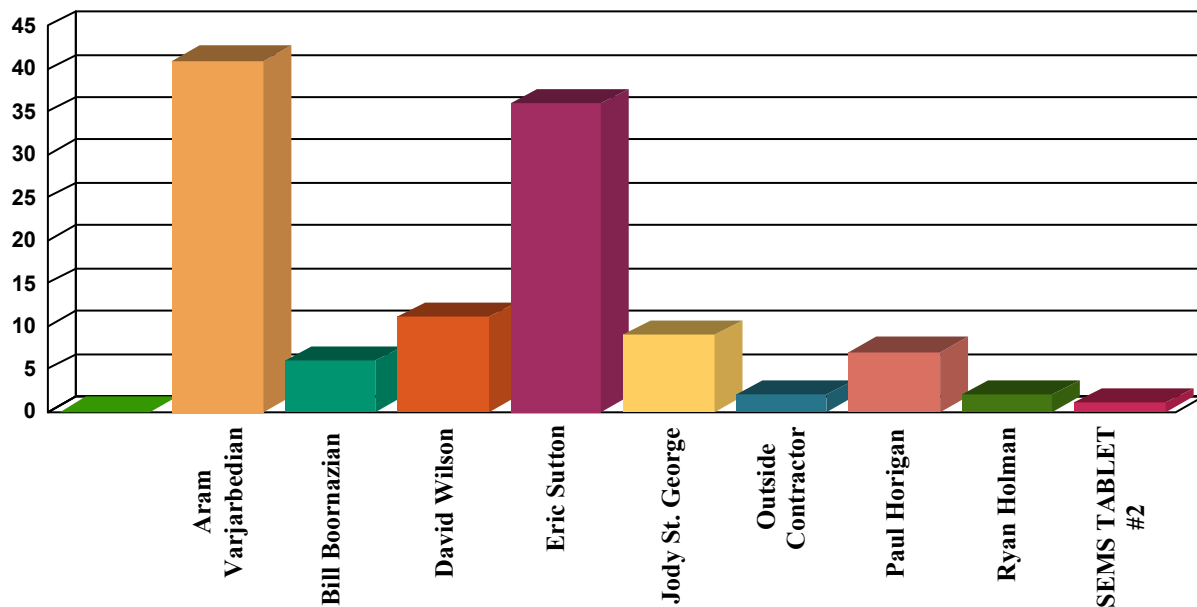
Corrective Maintenance	24
Inspections	8
Preventative Maintenance	84
Total Work Orders	116



Work Order History by Reason



Work Order History By Employee



Employee	WO Count	Labor Hours
Aram Varjarbedian	41	30
Bill Boornazian	5	11
David Wilson	11	5
Eric Sutton	36	13
Jody St. George	9	37
Outside Contractor	2	7
Paul Horigan	7	3
Ryan Holman	2	3
SEMS TABLET #2	1	1
Unassigned	2	4

Totals	116 114

Corrective Maintenance

Status Date	WO #	Asset Name	Work Description	Work History Note	Employee	Schedule Date	Status
1/1/21	13339	RAS Pump 1	Seal water not moving through seal box	Checked seal water during rounds. Water not moving through seal box. Shut off pump and supply water to inspect seal box. Nipple broke off inside of seal box. Extracted nipple piece. Cleaned out debris from seal box. Cleaned ball valve and installed new nipple. Restored water and verified seal water moving through seak box.	David Wilson	1/1/21	Completed
1/3/21	13340	PS 9 Piping and Valves	Loud water hammer heard during station checks.	Able to replicate by running pump 1 after running pump 2. Inspected check valve and found broken spring. Cleaned out remaining spring from hardware. Installed new spring and tested. Ran pump 2 then pump 1. Could not replicate.	David Wilson	1/3/21	Completed
1/5/21	13341	Buildings	Repair air line in garage	Completed	Jody St. George	1/6/21	Completed
1/6/21	13342	RAS System	Fabricate and install 8" piping, pipe hanger, blind flange in ceiling	Completed	Jody St. George	1/6/21	Completed
1/7/21	13347	Operations Building	drain pipe reassembly	Repair/reconnect drain pipe in sludge pump room that collects from generator room. This was segregated due to the HW project.	Aram Varjarbedian	1/7/21	Completed
1/7/21	13343	RAS Pump 3	Disassemble, prep, and repair corroded volute	Repair completed, will reassemble when coatings are cured	Jody St. George	1/7/21	Completed
1/7/21	13344	31 - WW Headworks	Reinstall drain piping from garage floor drains	Completed	Jody St. George	1/7/21	Completed
1/7/21	13345	PS 3 Pump 2	Removed rags from pump and check valve	Removed multiple gallons of rags from impeller and check valve. PS3 ragging occurring more frequently than ever. Very difficult environment. These check valves flappers are also prawn to grab rags here. All becoming a problem.	Bill Boornazian	1/7/21	Completed
1/7/21	13346	PS 3 Pump 1	Removed rags from check valve	Removed rags from check valve . Stuck under flapper arm.	Bill Boornazian	1/7/21	Completed
1/10/21	13348	Bisulfite System	bisulfite P1 leaking	taken out of service on 1/9, leaking. failed tube replaced, and new set of rollers installed. existing rollers worn. re-install in shed and tested ok.	Aram Varjarbedian	1/10/21	Completed
1/14/21	13349	PS 1 Pump 1	pump motor tripping out	on 1/13, found soft start tripped, due to high current 60 amps. 1/14, pull rot assy as rags could not be removed by insp port, wedged in between wear rings. AV, JS, BB set up necessary equip. pump was difficult to separate, but work completed. Normal run amps=26.	Aram Varjarbedian	1/14/21	Completed
1/14/21	13359	Sludge Storage Tank Loading Connection	need flush connection	Assemble and fabricate per BB and AV, 6 inch pipe nipple with QD ends and 1.5 inch plant water hook up. to be used to flush back sludge	Jody St. George	1/14/21	Completed
1/20/21	13350	RAS Pump 3	rewire direct mcc3 to sec bldg 3	hiVoltage Assoc rewire motor directly #3 to #3, pump back on line after ceramic repair to volute	Outside Contractor	1/20/21	Completed

Corrective Maintenance

Status Date	WO #	Asset Name	Work Description	Work History Note	Employee	Schedule Date	Status
1/20/21	13351	31 - WW Headworks	Reconnect piping	Completed	Jody St. George	1/20/21	Completed
1/20/21	13352	31 - WW Headworks	Reconnect piping	Completed	Jody St. George	1/20/21	Completed
1/20/21	13354	RAS Pump 2 VFD	change power source, due to suspect mcc 480 volt power source	Mike and Joe from HiVoltage install new breaker in MDP5 and 3 ph wiring to VFD and control transformer in MCC bucket for 120V power to motor starter. Bill B - All tested and pump running ok. update LOTO in binder and post at MCC	Outside Contractor	1/20/21	Completed
1/20/21	13353	PS A Pump 1	low output flow	AV, JS LOTO P1, pull motor and clean debris from volute. debris in between wear rings. wear rings are worn some.	Aram Varjarbedian	1/20/21	Completed
1/21/21	13355	PS Trailer Mounted Generator	Would not transfer power under load to station A	Station A generator load test failed due to no transfer of power from generator to station	Eric Sutton	1/21/21	Completed
1/21/21	13361	RST unit	corroded drain pipe - leaking	Cut out old 4-inch coupling, assess and make up adapter piece to slip in existing pipe, since flange is corroded and part of a drainage pipe that is inaccessible. install new repair coupling.	Jody St. George	1/21/21	Completed
1/21/21	13360	30 - WW Treatment Plant - General	storage of 6 inch and 4 inch suction hoses	with AV and BB, pull out all hoses, discard old items, stack pipe in rack, fabricate bracketing supports for safe and better storage of suction hoses.	Jody St. George	1/28/21	Completed
1/28/21	13357	31 - WW Headworks	Remove old and replace with pvc sanitary line	Completed		1/28/21	Completed
1/28/21	13358	RST unit	Install new 6 inch drain piping in headworks	Completed		1/28/21	Completed
1/29/21	13486	Blower Room	Louvers for exhaust fan	Cleaned and lubricated all louver parts	Paul Horgan	2/1/21	Completed
1/31/21	13362	Garage	rack storage set up	Aram & Mike put rack together with bins. Collect and store remaining stock of 7/8 and 1 inch studs, washers, nuts in 5 gal pails sorted by size. [from HDPE piping, etc].	Aram Varjarbedian	1/31/21	Completed

Inspections

Status Date	WO #	Asset Name	Work Description	Work History Note	Employee	Schedule Date	Status
1/9/21	12703	Eyewash Stations	WWTF Eyewash Inspection - Weekly	Inspected and tested all emergency eye wash and shower stations throughout the plant.	Ryan Holman	12/27/20	Completed
1/21/21	12910	PS 9	PS #9 Inspection - Monthly	Check wet well 0 debris	Eric Sutton	1/7/21	Completed
1/21/21	12909	PS 6	PS #6 Inspection - Monthly		Eric Sutton	1/7/21	Completed
1/21/21	12908	PS 5	PS #5 Inspection - Monthly		Eric Sutton	1/7/21	Completed
1/21/21	12911	PS A	PS #A Inspection - Monthly		Eric Sutton	1/7/21	Completed
1/21/21	12905	PS 1	PS #1 Inspection - Monthly		Eric Sutton	1/7/21	Completed
1/21/21	12906	PS 3	PS #3 Inspection - Monthly		Eric Sutton	1/7/21	Completed
1/21/21	12907	PS 4	PS #4 Inspection - Monthly		Eric Sutton	1/7/21	Completed

Preventative Maintenance

Status Date	WO #	Asset Name	Work Description	Work History Note	Employee	Schedule Date	Status
1/3/21	12719	Influent Sluice Isolation Gate	Weekly operate through full range	Exercised, worked through difficult areas 75% and 40% approx to get closed and reopened from SCADA. (Difficult since HW area work)	Aram Varjarbedian	12/30/20	Completed
1/3/21	12730	Effluent Pumps	Effluent Pump - Monthly	All effluent pumps had run time in December, due to variable flows. No issues. Verify through the trends. run time and flows	Aram Varjarbedian	12/15/20	Completed
1/3/21	12638	Grit Chamber Blower #4	Grit Rotary Blower #4 PM - Annual	Inspect oil, bump over. Blower is off line	Aram Varjarbedian	11/25/20	Completed
1/3/21	12637	Sludge Storage Tank Blower #3	Sludge Rotary Blower #3 PM - Annual	Inspect oil, bump over. Blower is off line	Aram Varjarbedian	11/25/20	Completed
1/3/21	12708	Generator #2 - Backup Detroit 500	Generator Weekly - Test Run no load	Inspected fluid levels and brought up to operating temp. Recorded all run data and cleaned strainer basket.	David Wilson	12/28/20	Completed
1/3/21	12815	High level floats	Weekly High Float Alarm test	Completed with AV	David Wilson	12/27/20	Completed
1/3/21	11792	Aerated Grit Chamber	Grit Chamber Cleaning - Annual	Close out, tank remained in service.	Aram Varjarbedian	6/25/20	Completed
1/7/21	12808	Chlorine probe ATl	Weekly calibration	Cal chk done, off by 0.2, overdue on mace	Aram Varjarbedian	12/21/20	Completed
1/10/21	12897	RAS Pump 3	Monthly Check Pump Couplings	Pump is currently down for repairs. Will Insp upon ready.	Aram Varjarbedian	1/6/21	Completed
1/10/21	12809	Chlorine probe ATl	Change electrolyte	Chg membr and electrolyte	Aram Varjarbedian	12/1/20	Completed
1/10/21	12807	Chlorine probe ATl	Weekly calibration	Weekly cal done as part of electrolyte chg	Aram Varjarbedian	12/7/20	Completed
1/10/21	12652	Chlorine probe ATl	Weekly calibration	Work order closeout, as maintenance date has passed. The lab verifies probe vs actual daily	Aram Varjarbedian	11/23/20	Completed
1/10/21	12651	Chlorine probe ATl	Weekly calibration	Work order closeout, as maintenance date has passed. The lab verifies probe vs actual daily	Aram Varjarbedian	11/9/20	Completed
1/10/21	12653	Chlorine probe ATl	Change electrolyte	Work order closeout today, as maintenance date has passed. The lab verifies probe vs actual daily	Aram Varjarbedian	11/1/20	Completed
1/10/21	12654	Chlorine probe ATl	ATI, change membrane	Membrane changed today and new cal solution	Aram Varjarbedian	11/1/20	Completed
1/10/21	12502	Chlorine probe ATl	Weekly calibration	Work order closeout, as maintenance date has passed. The lab verifies probe vs actual daily	Aram Varjarbedian	10/26/20	Completed
1/10/21	12501	Chlorine probe ATl	Weekly calibration	Work order closeout, as maintenance date has passed. The lab verifies probe vs actual daily	Aram Varjarbedian	10/12/20	Completed
1/10/21	12349	Chlorine probe ATl	Weekly calibration	Work order closeout, as maintenance date has passed. The lab verifies probe vs actual daily	Aram Varjarbedian	9/28/20	Completed
1/10/21	12196	Chlorine probe ATl	Weekly calibration	Work order closeout, as maintenance date has passed. The lab verifies probe vs actual daily	Aram Varjarbedian	8/31/20	Completed
1/10/21	12195	Chlorine probe ATl	Weekly calibration	Work order closeout, as maintenance date has passed. The lab verifies probe vs actual daily	Aram Varjarbedian	8/17/20	Completed
1/11/21	12923	PS 4 Generator	PS #4 Generator Inspection and Test - Weekly		SEMS TABLET #2	1/6/21	Completed
1/11/21	12912	PS 1 Generator	PS #1 Generator Inspection and Load Test - Monthly		Eric Sutton	1/6/21	Completed
1/11/21	12913	PS 1 Generator	PS #1 Generator Inspection and Test - Weekly		Eric Sutton	1/6/21	Completed
1/11/21	12921	PS 3 Generator	PS #3 Generator Inspection and Load Test - Monthly		Eric Sutton	1/6/21	Completed

Preventative Maintenance

Status Date	WO #	Asset Name	Work Description	Work History Note	Employee	Schedule Date	Status
1/11/21	12917	PS 3 Generator	PS #3 Generator Inspection and Test - Weekly		Eric Sutton	1/6/21	Completed
1/11/21	12922	PS 4 Generator	PS #4 Generator Inspection and Load Test - Monthly		Eric Sutton	1/6/21	Completed
1/11/21	12931	PS 5 Generator	PS #5 Generator Inspection and Load Test - Monthly		Eric Sutton	1/6/21	Completed
1/11/21	12927	PS 5 Generator	PS #5 Generator Inspection and Test - Weekly		Eric Sutton	1/6/21	Completed
1/11/21	12941	PS 6 Generator	PS #5 Generator Inspection and Load Test - Monthly		Eric Sutton	1/6/21	Completed
1/11/21	12932	PS 9 Generator	PS #9 Generator Inspection and Load Test - Monthly		Eric Sutton	1/6/21	Completed
1/11/21	12937	PS 6 Generator	PS #6 Generator Inspection and Test - Weekly		Eric Sutton	1/6/21	Completed
1/11/21	12933	PS 9 Generator	PS #9 Generator Inspection and Test - Weekly		Eric Sutton	1/6/21	Completed
1/11/21	12975	Generators "All Pump Station"	Generator Weekly - Test Run no load		Eric Sutton	1/11/21	Completed
1/11/21	12797	Meter #2 - 4 Gas	4 Gas Meter #2 Calibration - Monthly		David Wilson	12/31/20	Completed
1/11/21	12801	Meter #6 - 4 Gas	4 Gas Meter #6 Calibration - Monthly		David Wilson	12/31/20	Completed
1/11/21	12800	Meter #5 - 4 Gas	4 Gas Meter #5 Calibration - Monthly		David Wilson	12/31/20	Completed
1/11/21	12799	Meter #4 - 4 Gas	4 Gas Meter #4 Calibration - Monthly		David Wilson	12/31/20	Completed
1/11/21	12798	Meter #3 - 4 Gas	4 Gas Meter #3 Calibration - Monthly		David Wilson	12/31/20	Completed
1/11/21	12806	Confined Space 4 Gas Meter	monthly calibration		David Wilson	12/31/20	Completed
1/11/21	12806	Confined Space 4 Gas Meter	monthly calibration		David Wilson	12/31/20	Completed
1/13/21	12874	Influent Sluice Isolation Gate	Weekly operate through full range	attempted to exercise, but binding up. Visual Insp while operating locally in headworks. Egan to be contacted to clean and remove excess coating.	Bill Boornazian	1/6/21	Completed
1/15/21	12875	Influent Sluice Isolation Gate	Weekly operate through full range	BB and PH used GoPro to Insp gate before pressure washing by Egan. A lot of debris removed to improve gate operation	Bill Boornazian	1/13/21	Completed
1/16/21	12968	High level floats	Weekly High Float Alarm test	RH and RB completed	Ryan Holman	1/17/21	Completed
1/18/21	12962	Chlorine probe ATI	Weekly calibration	Weekly cal against lab results. Adjusted. Slope 302%	Aram Varjarbedian	1/18/21	Completed
1/18/21	12893	Effluent Pumps	Effluent Pump - Monthly	All pumps given several hours of run time due to rain event and higher flows. No issues.	Aram Varjarbedian	1/15/21	Completed
1/19/21	12872	Generator #1- Emergency Kohler 750	Generator Weekly - Test Run no load	Completed, no issues	Aram Varjarbedian	1/18/21	Completed
1/19/21	12871	Generator #1- Emergency Kohler 750	Generator Weekly - Test Run no load	Completed Insp, no issues	Aram Varjarbedian	1/11/21	Completed
1/19/21	12868	Generator #2 - Backup Detroit 500	Generator Weekly - Test Run no load	Completed Insp, no issues	Aram Varjarbedian	1/18/21	Completed
1/19/21	12867	Generator #2 - Backup Detroit 500	Generator Weekly - Test Run no load	Completed Insp, no issues	Aram Varjarbedian	1/11/21	Completed

Preventative Maintenance

Status Date	WO #	Asset Name	Work Description	Work History Note	Employee	Schedule Date	Status
1/19/21	12899	RST Feed Pump 1	Monthly Check Pump Couplings	Inspect, exercise valves, bump over. Unit off line until spring	Aram Varjarbedian	1/6/21	Completed
1/19/21	12948	PS Trailer Mounted Generator	Generator Weekly - Test Run no load		Eric Sutton	1/11/21	Completed
1/19/21	12914	PS 1 Generator	PS #1 Generator Inspection and Test - Weekly		Eric Sutton	1/13/21	Completed
1/19/21	12918	PS 3 Generator	PS #3 Generator Inspection and Test - Weekly		Eric Sutton	1/13/21	Completed
1/19/21	12924	PS 4 Generator	PS #4 Generator Inspection and Test - Weekly		Eric Sutton	1/13/21	Completed
1/19/21	12928	PS 5 Generator	PS #5 Generator Inspection and Test - Weekly		Eric Sutton	1/13/21	Completed
1/19/21	12938	PS 6 Generator	PS #6 Generator Inspection and Test - Weekly		Eric Sutton	1/13/21	Completed
1/19/21	12934	PS 9 Generator	PS #9 Generator Inspection and Test - Weekly		Eric Sutton	1/13/21	Completed
1/19/21	12976	Generators "All Pump Station"	Generator Weekly - Test Run no load		Eric Sutton	1/18/21	Completed
1/19/21	12949	PS Trailer Mounted Generator	Generator Weekly - Test Run no load		Eric Sutton	1/18/21	Completed
1/20/21	12876	Influent Sluice Isolation Gate	Weekly operate through full range	Exercised, still some sticking points at 76% Lubricate with soapy solution.	Bill Boomazian	1/20/21	Completed
1/20/21	12900	RST Feed Pump 2	Monthly Check Pump Couplings	Inspect, exercise valves, bump over. Unit off line until spring	Aram Varjarbedian	1/6/21	Completed
1/21/21	12915	PS 1 Generator	PS #1 Generator Inspection and Test - Weekly		Eric Sutton	1/20/21	Completed
1/21/21	12919	PS 3 Generator	PS #3 Generator Inspection and Test - Weekly		Eric Sutton	1/20/21	Completed
1/21/21	12925	PS 4 Generator	PS #4 Generator Inspection and Test - Weekly		Eric Sutton	1/20/21	Completed
1/21/21	12929	PS 5 Generator	PS #5 Generator Inspection and Test - Weekly		Eric Sutton	1/20/21	Completed
1/21/21	12939	PS 6 Generator	PS #6 Generator Inspection and Test - Weekly		Eric Sutton	1/20/21	Completed
1/21/21	12935	PS 9 Generator	PS #9 Generator Inspection and Test - Weekly		Eric Sutton	1/20/21	Completed
1/21/21	10204	Generators "All Pump Station"	Generator - Monthly Load Test		Eric Sutton	7/7/19	Completed
1/26/21	12880	Influent Pump 1	Semi Annual - ARI air release valve insp and cleaning		Aram Varjarbedian	1/6/21	Completed
1/26/21	12882	Influent Pump 2	Monthly Check Pump Couplings		Aram Varjarbedian	1/6/21	Completed
1/26/21	12881	Influent Pump 2	Semi Annual - ARI air release valve insp and cleaning		Aram Varjarbedian	1/26/21	Completed
1/26/21	12884	Influent Pump 3	Semi Annual - ARI air release valve insp and cleaning		Aram Varjarbedian	1/6/21	Completed
1/26/21	12888	Influent Pump 5	Semi Annual - ARI air release valve insp and cleaning		Aram Varjarbedian	1/6/21	Completed
1/26/21	12885	Influent Pump 4	Semi Annual - ARI air release valve insp and cleaning		Aram Varjarbedian	1/6/21	Completed
1/26/21	12883	Influent Pump 3	Monthly Check Pump Couplings		Aram Varjarbedian	1/6/21	Completed
1/26/21	12886	Influent Pump 4	Monthly Check Pump Couplings		Aram Varjarbedian	1/6/21	Completed

Preventative Maintenance

Status Date	WO #	Asset Name	Work Description	Work History Note	Employee	Schedule Date	Status
1/26/21	12887	Influent Pump 5	Monthly Check Pump Couplings		Aram Varjarbedian	1/6/21	Completed
1/26/21	11142	Effluent Pumps	Effluent pumps - Annual	All pump tested and run frequently, no issues detected	Aram Varjarbedian	2/1/20	Completed
1/26/21	12873	Generator #1- Emergency Kohler 750	Generator Weekly - Test Run no load		Paul Horigan	1/25/21	Completed
1/26/21	12869	Generator #2 - Backup Detroit 500	Generator Weekly - Test Run no load		Paul Horigan	1/25/21	Completed
1/29/21	12953	Meter #3 - 4 Gas	4 Gas Meter #3 Calibration - Monthly		Paul Horigan	1/28/21	Completed
1/29/21	12954	Meter #4 - 4 Gas	4 Gas Meter #4 Calibration - Monthly		Paul Horigan	1/28/21	Completed
1/29/21	12955	Meter #5 - 4 Gas	4 Gas Meter #5 Calibration - Monthly		Paul Horigan	1/28/21	Completed
1/29/21	12956	Meter #6 - 4 Gas	4 Gas Meter #6 Calibration - Monthly		Paul Horigan	1/28/21	Completed

Status Date	WO #	Asset Name	Work Description	Work History Note	Employee	Schedule Date	Status
1/25/21	13356	Main Office	Testing dispatch to new Android	Test good	Bill Boornazian	1/21/21	Completed