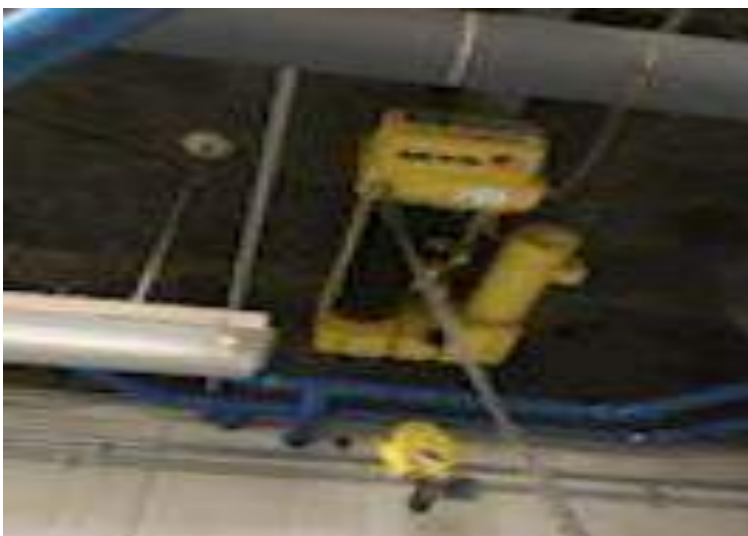




HULL WATER POLLUTION CONTROL FACILITY

April
2021

MONTHLY OPERATING REPORT



woodardcurran.com

COMMITMENT & INTEGRITY DRIVE RESULTS

NPDES NO. MA0101231

Table of Contents

1	Executive Summary	3
2	Flows and Loadings.....	4
2.1	Average effluent monthly flows – 2+ year comparison	5
2.2	Monthly Summary of Rainfall and the Influence on Effluent Flows	6
3	Compliance	8
4	Key Performance Indicators	13
4.1	Water Quality – april 2021	13
5	Odor Control	16
6	Maintenance Summary	19
6.1	Tasks Completed this Month	19
6.2	Asset Management Accounts	21
7	Safety.....	22
8	Staff Development.....	24
9	Collection System	25
9.1	Wet Well Cleaning	25
9.2	Collection System Maintenance	25
10	Project Management & Administration	27
10.1	On-Going Projects and Support Items	27

Cover pictures:

[top] Process pictures of secondary system

[bottom] Electric Hoist in Operations building – Annual Inspection

1 EXECUTIVE SUMMARY

This Monthly Operating Report provides a summary of the pertinent information and activities that occurred at Hull WPCF during the month of April 2021.

- No lost-time incidents for the month of April.
- Continued/On-going covid-19 safety operations: Regular daily operations and staff scheduling. On-going coordination with vendors and contractors for project work. Following CDC, Town, State and Company with mandated safety protocols and mask use. Staffing levels normal as it pertains to covid19.
- There were **146** effluent samples taken in the month of April [details on page (12).] All effluent samples collected were compliant. The average daily flow for the month was 1.45 MGD. A total of 4.77 inches of rainfall was recorded, with the highest daily total amount on 4/15-4/16 – 2.6". High winds and rain had flows rise, but manageable until mid-afternoon, and then it was necessary to put SC#1 on-line at 2pm since plant flows were over 5 MG. Process conditions were compliant.
- There were no Sanitary System Overflows [SSO] reported.
- The plant and collection system odors remained low due to low sewage temperatures and variable flows. The Bioxide system was dosing at low rates for most of the month.
- Continued work in aerated grit tank to make grit removal possible. Modified air header piping and worked on aerated grit system to get system operational.
- Co-ordinate efforts for implementation of plant effluent bypass, using the 8-inch Vortex pump.
- The 06M Asset Management Accounts checkbook summary and planned expenses updated for contract year #6 are attached. Latest revision date: 7/14/21.
- There were NO grinder pump call outs during the month of April.
- W&C O&M continued to support the Engineering projects –pump station #5, pump station #9, and effluent gate/pump room project. Attended calls for planned HVAC and plant engineering upgrades as needed.
- Plant Staffing – APM position open as of April 16th. New hire process open and initiated to fill the position.
- Hoist and chain fall – annual inspections of all units

Woodard & Curran strives to deliver a high-quality operations service and is responsive to our customers concerns. Please feel free to request any modifications to the format or content of this report.

2 FLOWS AND LOADINGS

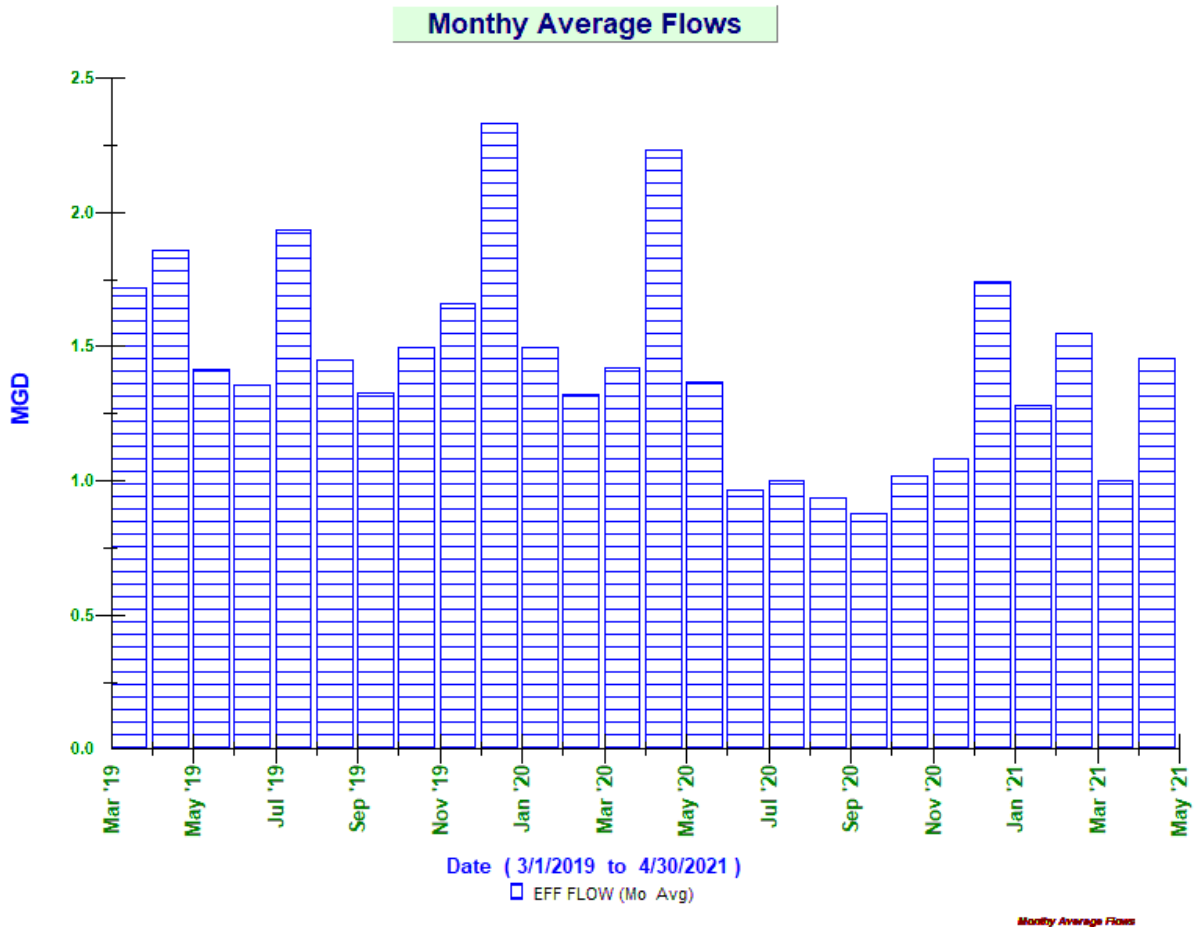


Average Daily Flows and Loadings for the Month:

	Eff Flow MGD	Inf Flow MGD	Inf BOD LBS	Inf TSS LBS	Eff BOD LBS	EFF TSS LBS
Apr 2019	1.856	2.202 *	1246	1835	101	168
Apr 2020	2.231	2.438*	1839	2564	65	156
Apr 2021	1.453	1.670*	1796	2245	60	129

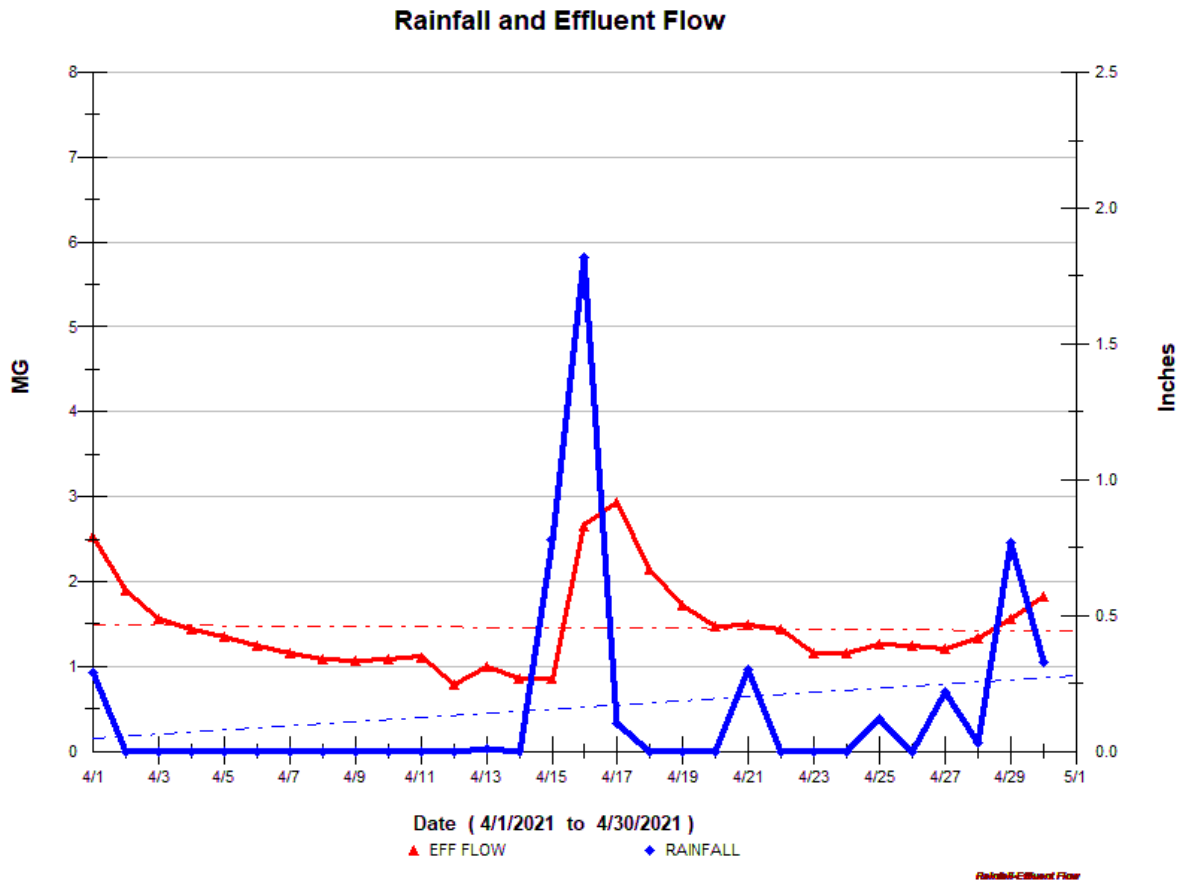
* On-Going -The influent flow meters are strap on doppler flow meters, and the internal pipe condition prevents getting a strong signal. The staff utilizes the area velocity meter in the aeration tank inlet channel as well as the headworks influent Parshall Flume meter. All reported loadings are based on the effluent flow meter. All meters are tied into the Scada system so that influent flows can be monitored. Flows in 2020-2021 are lower due to improvements in the collection system to reduce inflow and infiltration.

2.1 AVERAGE EFFLUENT MONTHLY FLOWS – 2+ YEAR COMPARISON

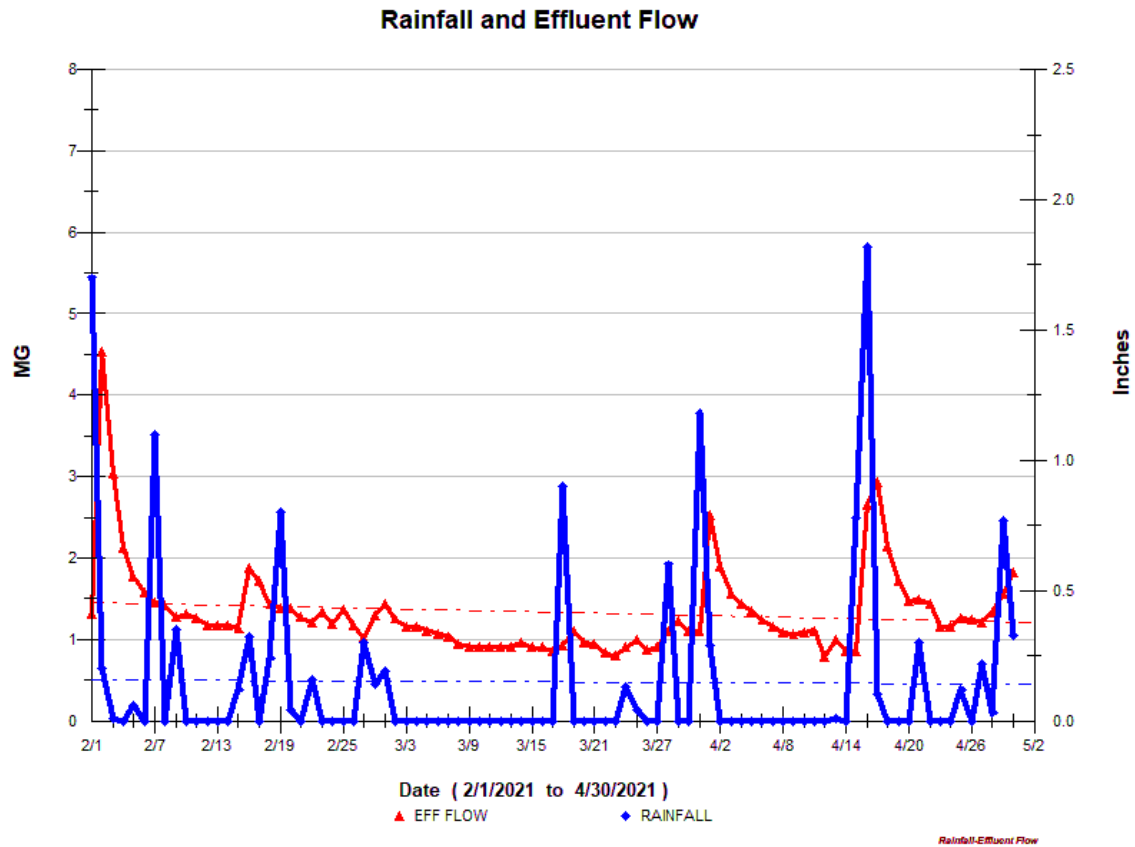


The monthly average flow for April was 1.45 MGD, higher than the previous month. The total precipitation for the month was 4.77 inches, with 2.6 inches of rain on 4/15-16. The graph shows the 2-plus year summary of the monthly average flows.

2.2 MONTHLY SUMMARY OF RAINFALL AND THE INFLUENCE ON EFFLUENT FLOWS



This graph shows the days where precipitation occurred [rainfall] [Blue Peaks]. This graph indicates that there were a few wet weather periods in April. The wet weather had moderate impact on the plant flows.



This graph shows the data from the last 3 months and shows the times when rainfall impacted the plant flows.

3 COMPLIANCE



➤ Plant Effluent

There were no permit exceedances in the month of April.

- Plant process conditions were stable during the month. Adjustments to the timed aeration schedule were made as needed. There were some flows variations due to higher rainfall seen mid-month. Still dealing with the impacts from the plant flow stoppages for the secondary effluent gate work, and the process conditions created. Sludge settleability slowly improving and greasy sludge mats on the aeration tanks lessened. Chlorination of the RAS continued in April. Pictures of the aeration tanks and clarifiers below. Annual sludge characterization sample collected in April.



- A Copy of the monthly NPDES reports for April 2021 was submitted to the EPA & DEP and then forwarded to the Hull Sewer Dept.
- Weekly sampling schedule adjusted as needed to accommodate capital projects and flow shutdowns/bypasses.



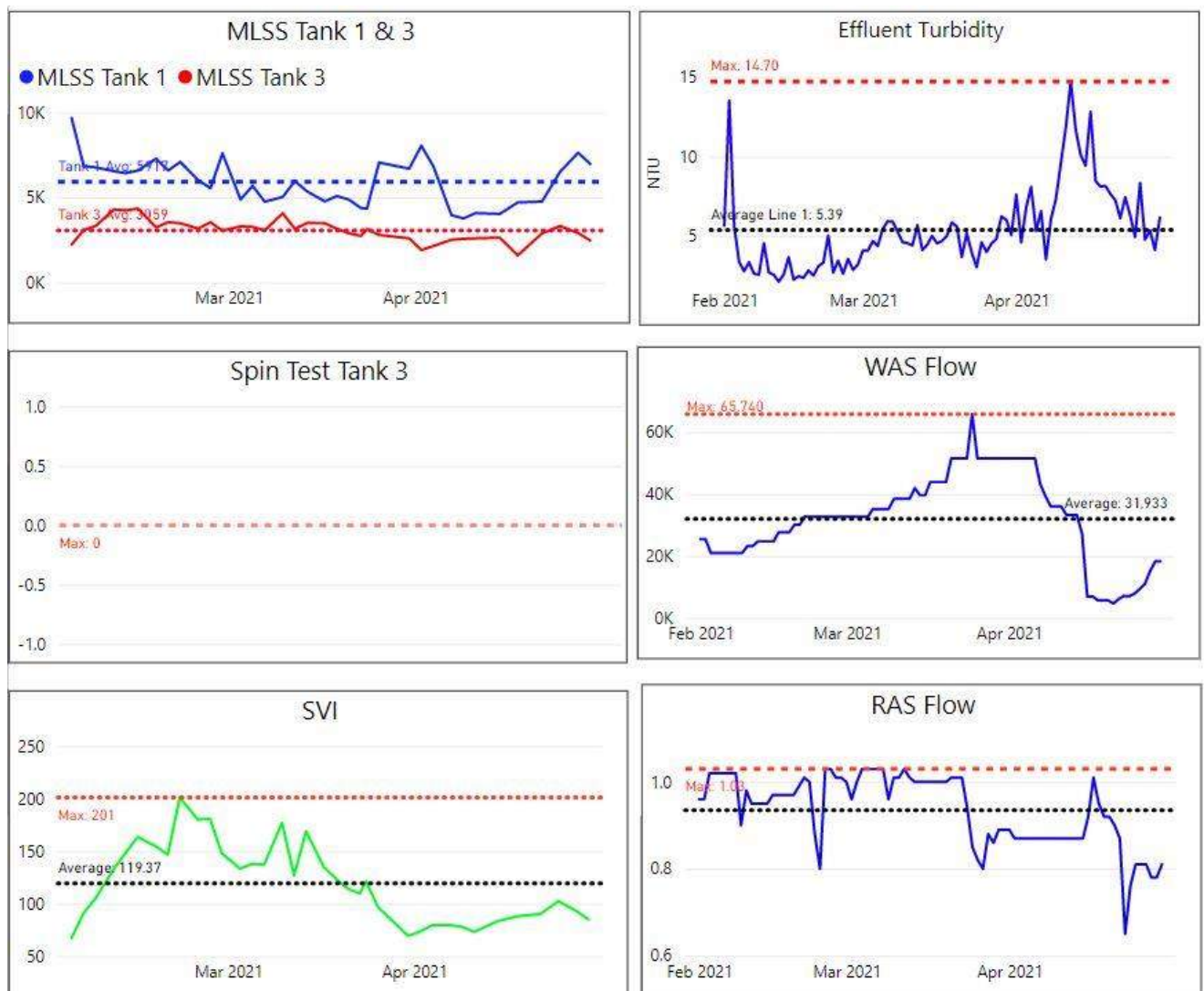
Hull Wastewater Treatment Facility

4/1/2021

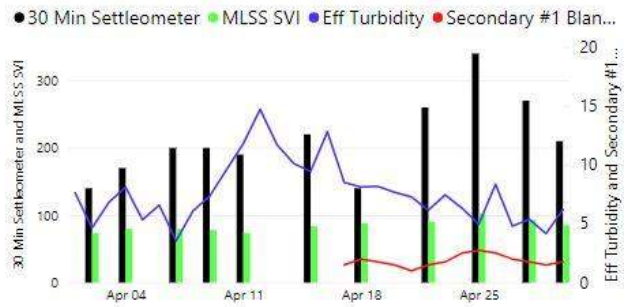
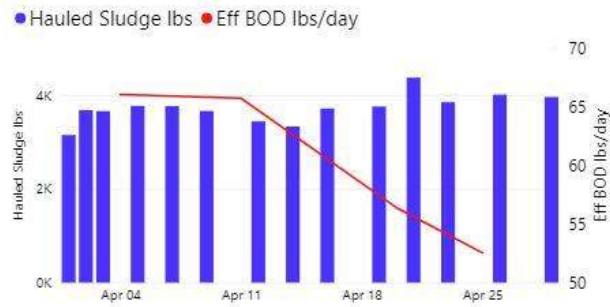
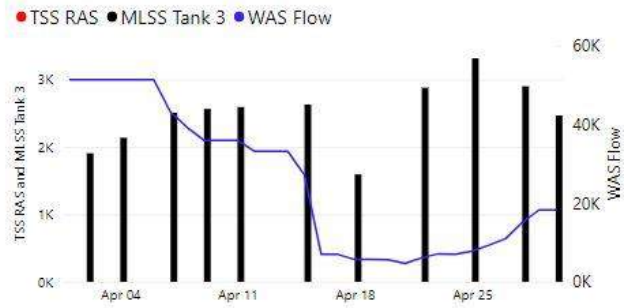
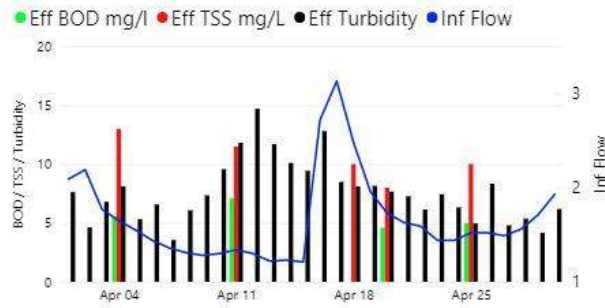
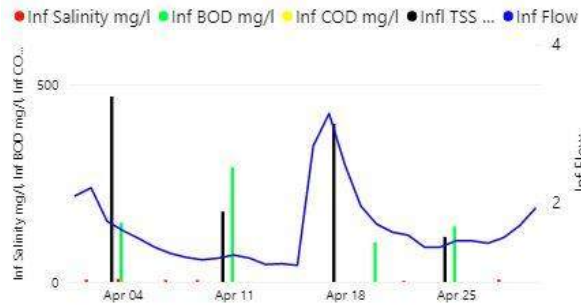
4/30/2021



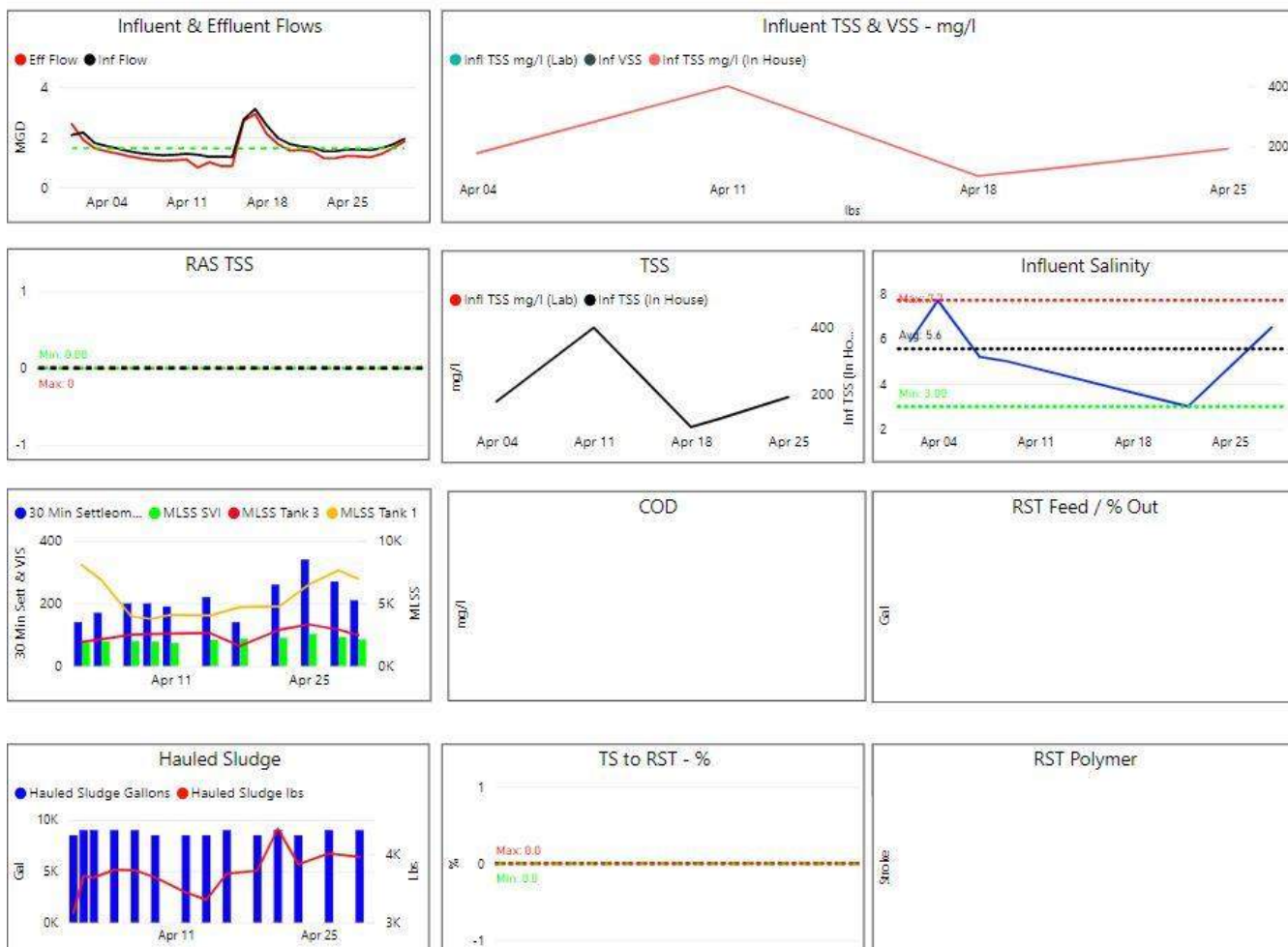
Monthly Process Summary graphs from power BI – April 2021.



Graphs shows trending of secondary processes using Power BI for the 3-month period ending on 4/30/21. The tank solids levels under aeration showed a decrease, since wasted gallons were still elevated to get the solids inventory lower and continue wasting out some of the undesirable filamentous bacteria. The sludge settling that is measured as SVI [sludge volume index] which had been slow, showed an improvement [lower SVI value] and trending lower. [a positive sign]. Effluent turbidity was stable, although the elevated value was the result of higher plant flows.



Various Power BI Graphs [related to Drylet] shows trending of various processes – April 2021.



Additional Power BI Graphs that show trending of various parameters – April 2021

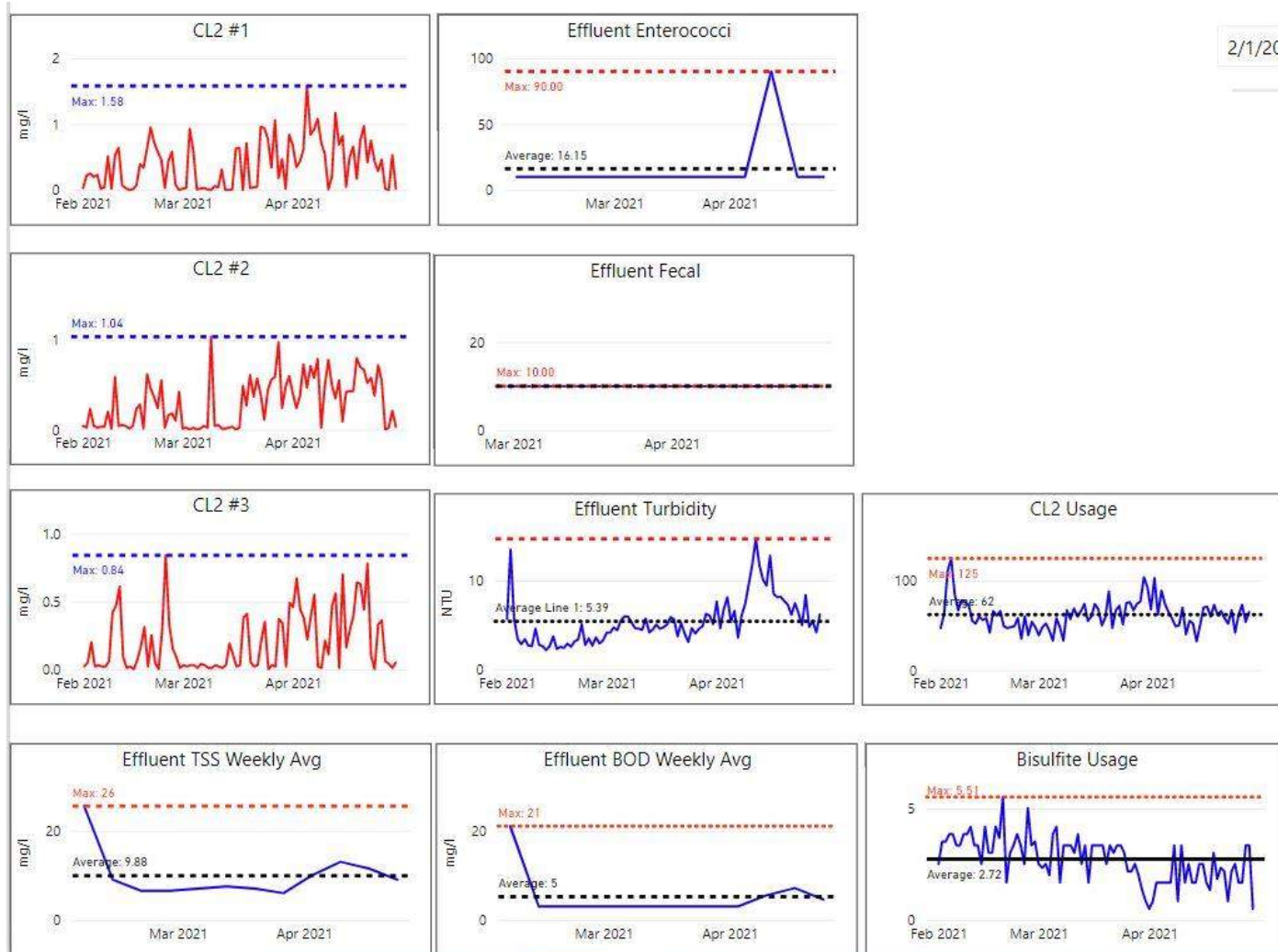
4 KEY PERFORMANCE INDICATORS



4.1 WATER QUALITY – APRIL 2021

Parameter Info		Permit Requirements					Results				
Parameter	Units	Daily Allowed Max in month	Min %	Weekly Avg. Max Allowed in month	Monthly Avg	Freq	Period Monthly Avg.	Period Weekly Min	Period Daily Max	# Of Samples	# Of Violations
Eff TSS	MG/L	50		45	30	1 X Week	10.5	8.0	13.0	5	0
Eff TSS	LBS			1152	768	1 X Week	128.8	98.1	178.5		0
% TSS Rem	%		85			1 X Month	94.7				0
Eff BOD	MG/L	50		45	30	1 X Week	5.6	4.6	7.1	4	0
Eff BOD	LBS			1152	768	1 X Week	50.2	52.5	66.1		0
% BOD Rem	%		85			1 X Month	96.7				0
Eff Chlorine	MG/L	1.0			0.7	3 X Day	0.44	0.02	0.76	90	0
Eff Fecal	#/100 ML	260			88	1 X Week	10	10	10	4	0
Eff pH	SU	8.5	6.5			1X Daily	7.1	6.8	7.6	30	0
Enterococci	CFU/100 ML	276			35	1 X Week	17	10	10	4	0

There were 146 effluent samples taken in the month of April.

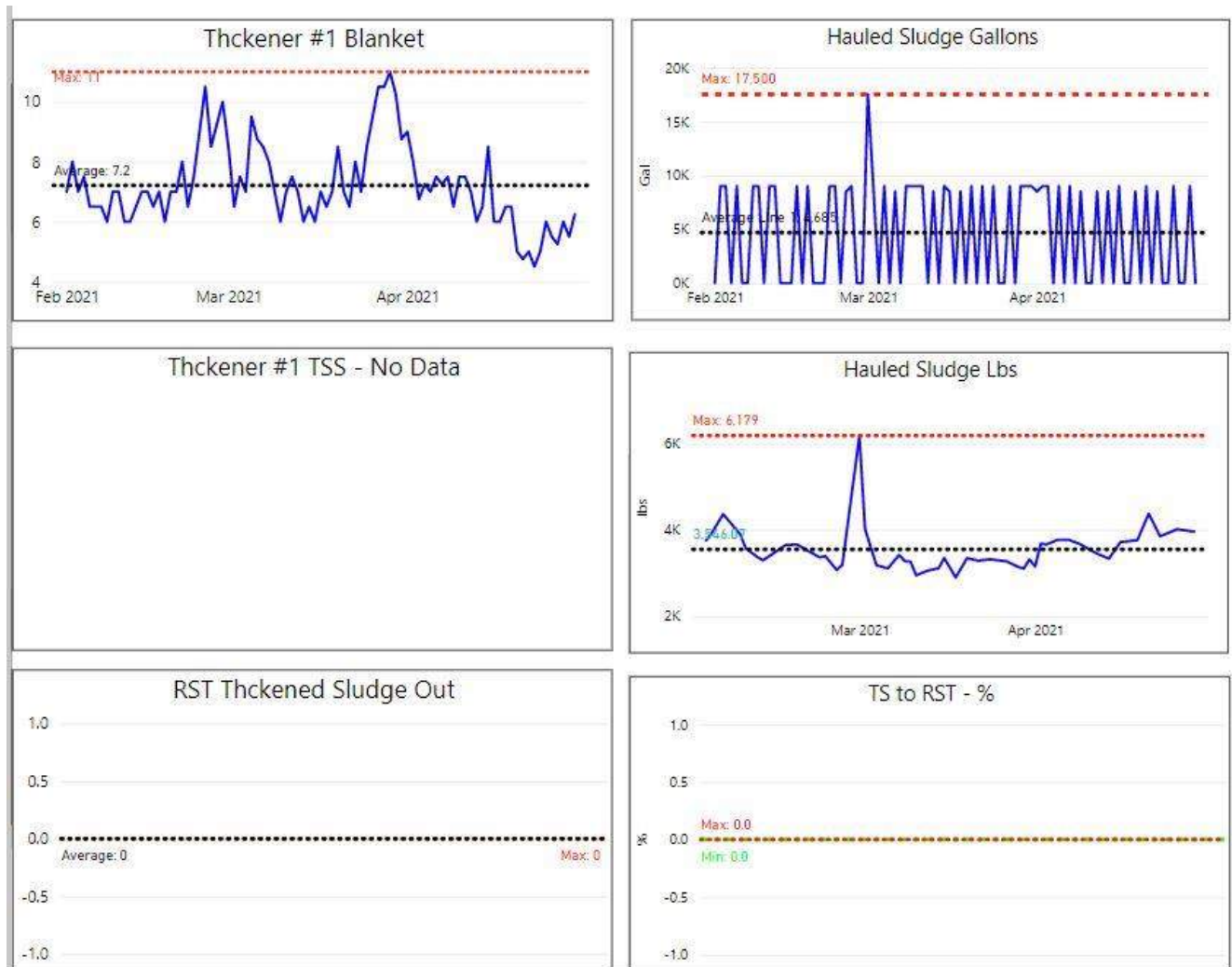


Power BI graphs showing effluent compliance for the last 3-month period ending on 4/30/21 - chlorine residuals, effluent compliance, & chemical use. Bleach [sodium hypochlorite] & sodium bisulfite trending same/slightly higher, and effluent quality was stable.

Gallons Treated vs Sludge Disposed

Month	Effluent Treated, MG	Sludge Disposed, Gals
April 2019	55.69	152,000
April 2020	66.93	150,500
April 2021	43.59	123,000

Additional Power BI graphs for sludge solids for 3-month period ending 4/30/21.



5 ODOR CONTROL

There were no odor complaint calls received during the month of April for the wastewater facility. The gravity thickener and primary clarifier were both on-line. The Bioxide system was on, and the feed rates were adjusted as needed according to data seen at Nantasket/Water MH. Some changes made were flow related. The overall feed rates remained low in the month of April. The monthly graphs are attached below.

- “In-Pipe” bacteria addition continued with all 24 Microbe Dosing Stations [MDU] operational. The monthly bottle changes were completed 4/13-14/21. The bi-weekly change outs of the bacteria bottles at three lift stations in the wet wells or manhole just prior to the station. [PS 3, PS 5, PS 9] were done on 4/27/21.
- Mixing systems/aerators were all functional and in timed mode at the pump stations with, except for pump station #3. [Bioxide addition is at PS 3], and at PS #5, with newer Flygt pumps, as the mixer may be causing air entrapment in the pumps.
- Hydrogen sulfide monitoring units [H₂S] were recording and being trended on the odor scrubber for monitoring inlet and outlet H₂S levels. The scrubber fan speed was at 50HZ, approximately 75% speed. Weekly neighborhood monitoring around the plant done with portable Jerome meter weekly.
- Todd G from Evoqua visit on 4/14 to check XYZ odor loggers and no dissolved H₂S at this MH.
- Looking at possible options for Bioxide additional at PS 1 and PS 9 areas.

[pictured below: trending graphs for H₂S levels recorded from the vapor link system cellular at manhole at XYZ Street/Nantasket Ave and Nantasket Ave/Water Street.

XYZ – Nantasket Ave [closest to plant]



The odor data logging unit at XYZ that was being used to monitor overall H2S levels as close to the plant has had no H2S present.

Nantasket Ave/Water Street [at end of PS 3 force main and PS 4 discharge]



Pump station #3 - Bioxide stored here and where the chemical is added. The H2S level is monitored at the end of the force main at Nantasket & Water Street. The excess nitrate concentration in the sewage is available to treat the additional H2S contributed from other parts of the system – PS4, contributions from lines feeding the interceptor, PS5, PS6, etc. all the way to the plant.

There were generally low H2S levels in the system for most of April mostly due to lower wastewater temperatures and some wet weather events. The individual spikes were due to the discharges flow from PS #4.

6 MAINTENANCE SUMMARY

6.1 TASKS COMPLETED THIS MONTH

The SEMS monthly work order summary for April is compiled and attached for review.

Key items of note are listed below.

- Pump station #1 – P1 - Removed a large amount of sanitary wipes & rags, which caused the pump to bind up and trip. Had to disassemble cleanouts, remove the debris, and return pump to service.
- Aeration tanks #2 & #4 cleaned out with confined space entry by WC staff and vactor truck
- Work with D&C crew to set up 8-inch pump for bypass pumping from secondary effluent manhole to the CCT's. Route temporary hypo solution line to this manhole for disinfection. Set up for level control with probe.
- Work with D&C crew for knife gate and mag meter installation, for coordinated plant flow shutdowns and bypasses.
- Work on aerated grit chamber modifications. CSE for piping changes and setup of submersible mixer pump, pull sandbags out in trough, to block off flow back into the tank. Consulted on repair option for the existing screw and total replacement option with same equipment. Project costs deemed too costly with long lead time, and newer system not that far away. Next step[s] would be to consider batch removal of grit, and possible disposal approval, location, and cost.
- Several confined space tank entries were made into the aerated grit chamber to perform additional inspections, make air piping modifications, block off the steel trough with sandbags to prevent sewage flow back into the empty tank until final modifications made, and remove the old/failed screw.



- Acid cleaning of the scrubber done – annual task. Two cleaning performed, with acid neutralization, cleaning of the bottom of the vessel, and inspection of the media.
- Work on RST polymer system - complete tubing change out & cleaning of pump head. Other maintenance tasks completed to get the rotary drum thickener ready for service.
- Monthly scrubber fan maintenance - replace belts & set speed at 50hz.
- PS#4 - DW/JS able to flush back P1 and recover pumping capacity. PS4 back to alternating mode.

- LOTO of RAS pumps 1 & 2 twice during the month to clean out accumulated debris, and then put RAS pumps back online.
- MS Electrical/Highland Power in for generator #1 heat exchanger PM and completed remaining inspection of fuel system filters and heat exchangers.
- New Effluent flow meter electronics installed by HI Voltage Associates, and after accepted, the new meter was hooked up to SCADA by Steve Rose.
- Remove and replace rims and tires on the Onan Portable generator
- On 4/30 – W&C and Andy M [Pioneer Electrical] in for PS5 VFD reprogramming and for new pumps to go online at PS5. D&C, FREA, and Flygt at the pump station also.
- Semi-annual service completed on all influent pumps, exercised all valves, and greased pumps and motors, inspected couplings and hubs.
- Water pump on the generator for PS5 - refurbished unit installed on the engine, and back in service.
- Glenn F – 73 Park Ave - Unwired and removed old grinder pump panel. Installed new panel and terminated on 4/6.
- Glenn F – electrician – various electrical work to correct deficiencies – RAS flow meter, outlet panel by headworks door area, aeration tank.
- Skag mower – first year preventive maintenance service by Stewart power.
- LS A - Assisted by BB, ES, and Glenn F. Many site visits to address failed pump. Pull failed CCW assembly with 4/2012 motor code on 3/2. Deliver to repair shop [IPS -Industrial Pump Sales] where it was determined that the mechanical seal had failed, and water shorted the motor windings. IPS installed the CCW impeller on a spare motor ASSY [date code Y 01] that was a spare at the plant. W&C installed on 3/9 and it test ran ok and online. After several days in service this assembly developed a loud bearing noise. The pump was shut off, evaluated, and then removed from service and brought back to IPS for inspection. A bad motor bearing was found and a rebuild was needed.

Other issues to be addressed at LS A – leaking discharge pipe, leaking suction valve for pump #2.

- Glenn F – ongoing LED lighting and ballast replacement work in Ops building



6.2 ASSET MANAGEMENT ACCOUNTS

- Please see the attached summary and planned expenditures for the Asset Management accounts for contract year (6). Most recent through **07/14/21**.
- Year 7 Asset Management account budgets forwarded to the HSD on 4/13/21
- Note: there are several purchase orders still open for ongoing and planned maintenance that are pending in the 06M budget. These projects are being reviewed on a regular basis with the HSD and costs updated in the year #6 checkbook.

7 SAFETY



It is Woodard & Curran's policy to maintain a safe and healthy work environment for every employee and to comply with applicable occupational health and safety regulations.

- No lost time incidents reported for April.
- Monthly PM's - Emergency eyewash and shower inspections, fire extinguisher and emergency lighting inspections completed.
- On-going Coronavirus Covid-19 awareness and updates discussed – daily & as needed. Staff separation, facility visitors, personal hygiene & company initiatives. Daily non-contact temp checks for staff & visitors. Work with onsite contractors to ensure that Covid-19 procedures in place and being followed. Continue to work with O&M health & safety, W&C Engineering, to ensure safety protocols in place for the ongoing engineering projects at the facility. Vaccines: voluntary disclosure of vaccination.
- On-going – daily safety briefing meetings with staff, covid updates & reminders, site specific safety policies for sub-contractors, safety tailgate meetings. Pure Safety topic– April – H&S Hub.
- Monthly staff safety meeting conducted on 4/28/21. The staff participated virtually via Microsoft Teams. Major topics discussed: Covid updates, skin safety, distracted driving safety, daylight's saving time safety, hearing conservation. Review Lessons Learned for March 2021.
- Electrical gloves sent out for inspection/certification
- New corporate H&S "Hub" safety tracking program initiated/rolled out – AV and Steve Lindeman – training for the Hub.
- Planning for service truck – annual safety inspection/service – early May.
- Annual hoist inspection with Applied Dynamics completed. 19 total units inspected. Pictured – inspection report & typical hoists in Hull.



(800) 505-0047

Annual Inspection
WOODARD & CURRAN
HULL WWTP 1111 NANTASKET AVE
HULL, MA 02045

FolderID: 2075
FormID: 10276564



Overhead Crane

Completed by: Dan Ouellette on 04/06/2021

Location: Hull MA
Area: Electrical Room
Crane Serial Number: NONE
Equipment Number: 4
Status: In Service

Type: Hoist Only
Capacity: 2 1/4 Ton Eye
Beam Size: None
Power: 115V-1Ph-60Hz
Crane Manufacturer: None
Hoist Type: Electric
Hoist Manufacturer: Coffing
Hoist Capacity: 2 Ton
Hoist Model Number: EC-4006
Hoist Serial Number: EC4135UL
Hoist Access: 8 FT STEP
Hoist Suspension: Hook
Hoist Lifting Medium: Chain
Hoist FT of Lift: 35 (ft.)
Hoist Reeving: Double
Hoist Speed: 6 FPM
Trolley: None
Trolley Capacity: None
Control Type: Pendant
Pendant Brand: OEM

Priorities Found: 1 - Low 17 - Good

Floor and Remote Controls

1. Warning Tag **Pass**

Electrical Equipment

2. Power Cord / Cord Reel **Pass**

Trolley 1

3. Trolley Suspension **Pass**

Hoist 1

4. Hoist Suspension **Pass**

5. Electric Brake **Pass**

6. Hoist Motor **Pass**

7. Gear Box **Pass**

8. Lower Limit Switch **Pass**

Adjusted

9. Primary Upper Limit Switch **Pass**

Load Chain

10. Main Hoist - Chain Condition **Pass**

11. Main Hoist - Chain Lubrication **Pass**

Recommend lubing chain.



8 STAFF DEVELOPMENT

Training is an important part of any operation to ensure employee health and safety is assured, quality standards are maintained, staff skills are improved, career opportunities become available, and higher productivity is achieved.

Listed is a general outline of training that the staff received over the course of the month:

- Monthly staff Safety training – completed – Pure Safety and monthly safety meeting. W&C “near-miss” incidents at all projects for February discussed.
- Regular operational updates and process control discussions, pump station operations, especially with construction projects going on at the plant and pump stations. Safety Covid-19, dig-safes, etc.
- Some off-site training at end of the month, but offerings were still limited due to Covid-19 limitations & conditions. Company training for staff included “Qualified Electrical Worker” and “CPR/First Aid”. Staff continued to use the virtual training sessions offered through NEIWPCC. These modules to be used for training, educational advancement, contact hours for wastewater license renewal, and certification exam preparation. Sessions attended: Activated Sludge, wastewater math, wastewater processes.
- Work with staff to complete 2021 goals/objectives.

Staffing related items:

- The regular staff labor continued to be supplemented with the two O&M Specialists to cover all the necessary shifts, since the regular staff was reduced by one person [Bill B leaving the project] Paul Horigan and Jody St. George provided the additional assistance.
- Weekend staff schedule was updated that will have some Saturday & Sunday staff coverage on overtime basis and increased use of part-time staff. No changes made to the Sunday schedule plan and coverage continued with Aram V., Roger B., and Joe B.
- Bill Boornazian’s [APM] resignation was effective 4/16/21, as he took a position out of state and not with W&C. Posting for replacement is out and candidate pool is being collected. Bill’s working files posted to the TEAMS site.
- Mass Maritime [MM] internship program the facility will have an intern for the summer 2021, as a Hull resident was interviewed and will start in June.

9 COLLECTION SYSTEM

9.1 WET WELL CLEANING

The actual schedule for wet well cleaning: May 2020 to April 2021:

(X-Cleaned) - (Orange – Inspected) - (Green – See notes) - (blank – no work done)

Frequency of cleaning	Pump Station							
	A	1	3	4	5	6	9	D
May, 2020	X				X			
June, 2020								
July, 2020	X			X				
Aug., 2020								
Sept. 2020	X							
Oct.,2020	X			X	X			
Nov, 2020								
Dec., 2020	X			X	X			
Jan., 2021								
Feb., 2021					X			
March 2021					X			
April 2021								

All pump stations except for Pump Station 3 and Station D have an aerator/mixer in the wet wells.

9.2 COLLECTION SYSTEM MAINTENANCE

Woodard & Curran assisted/conducted camera work and sewer system support in the Hull collection system at the following areas during the month of April.

- In-Pipe units – on-going maintenance of dosing units as needed. Staff conducts board troubleshooting, dosing pump repairs and replacements, and works with “In-Pipe” technician on these issues.
- All Pump station generators loaded, and non-loaded generator runs were done for the month.
- All Pump station wet wells were inspected in April. Monthly Pump Station Inspections completed and combined with monthly station PM's.
- Upload tie-cards to the UC as requested.

- Grinder pump summary:
 - No grinder pump replacements.
 - Control panel at 73 Park Ave replaced

Dig Safe mark outs:

- On-going Dig-Safe mark outs. These are completed throughout the Town of Hull to assist/facilitate scheduled and emergency gas repairs, broken water mains, upcoming roadway paving projects, and other residential and town projects and are listed in the UC summary.

Collection system support: Ongoing backup and blockage call outs requiring an increase in manpower and time to support. Below summarizes W&C's efforts at the various call out locations.

- Complete emergency dig safe requests when able to complete them. Most of the calls were for water main breaks/gas company emergencies. There were a number for fire hydrant replacements planned & done.
- Took call from 16 Marina Drive – private sewer & advised owner
- 9 Glover Ave – recurring issue - slow flow and backing up into the house. Checked the manhole in the street and found accumulated debris and paper hanging up on an exposed stud or something similar in the invert. The clog was cleared, and obstruction removed.
- Ocean Ave – Truax working on obstructed sewer line with a chain knocker and vac truck.
- Island View/Porazzo – checked out sinkhole
- Jetter/Vac truck demo at plant – then to Farina Rd for back up call., and jetting line at Atherton Assist with dig-safe mark outs related to the paving project – Park, Berkley, Rockland Circle, Newport Rd., Bay St.
- Rockview Rd – inspect sewer line that was hit by contractor – ES and Brian K [4/2]
- 50C Whitehead backup call out - ES/KA inspected street was normal and possible issue in the house - advise need for a plumber
- 4/26 - W to PS #1 to inspect wetwell and old inlet piping with Pete L [some I&I coming in]
- 4/27 - D Wilson at PS #1 for ALU work cycle pumps as needed manually while ALU sealed off old inlet pipe to the wet well. Pete Lyons also there.
- 4/26 - 206 Atlantic Ave back-up issue because of the vacator cleaning. Pete L followed up with homeowner.
- 4/20 - Truax in for check on Ocean Ave. We took our push camera, but they could not do anything here with vehicle sent. ES assisted. They proceeded to Nant Ave area down by the restaurants and jetted/vac area for grease removal.

Collection system work is being documented and tracked in Utility Cloud and a summarized report for the month of April has been included as an attachment with the Monthly Operating Report.

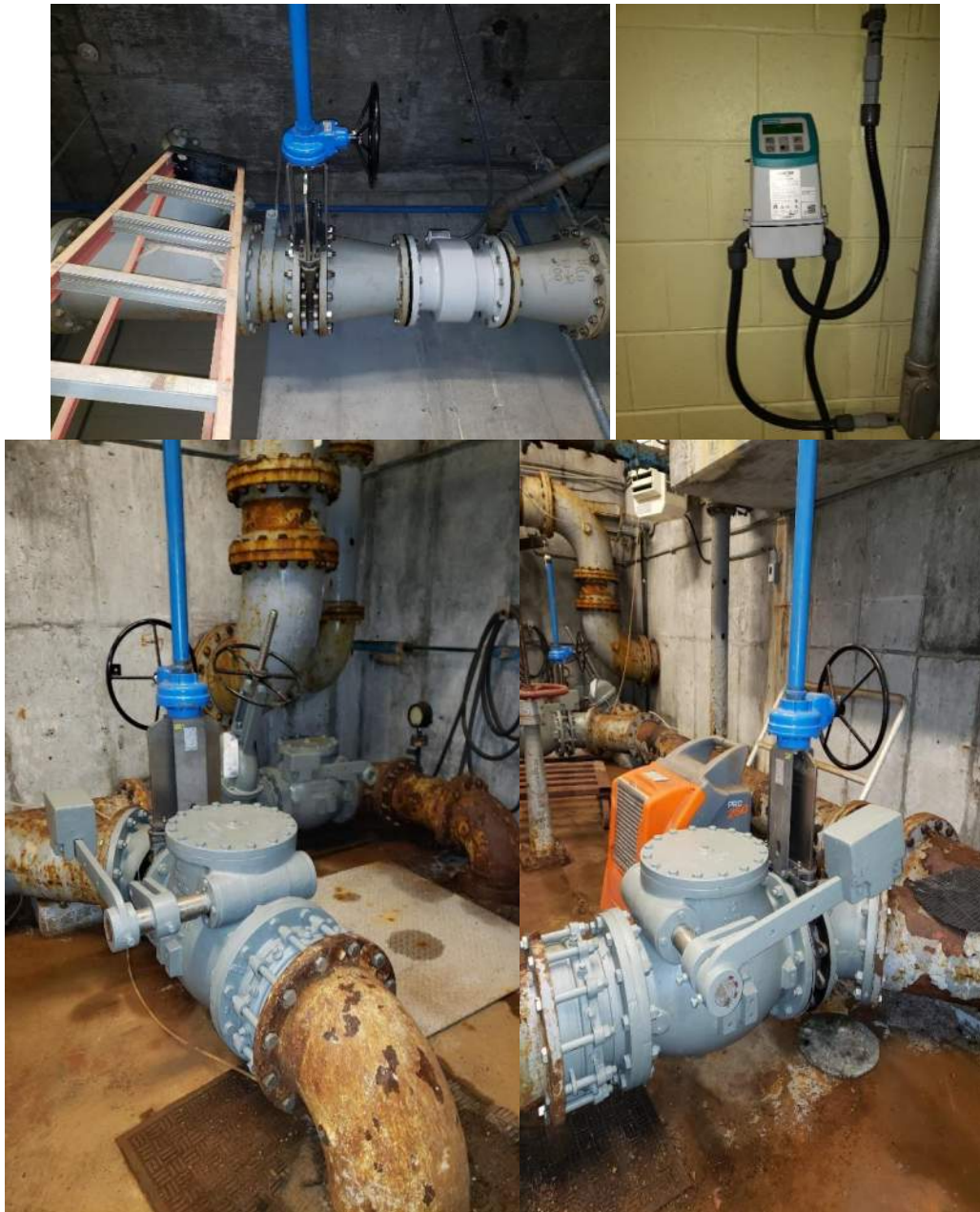
10 PROJECT MANAGEMENT & ADMINISTRATION



10.1 ON-GOING PROJECTS AND SUPPORT ITEMS

April updates:

- Ongoing – support of engineering projects - review and provide feedback and participate in calls as available. Continued work with the Town, W&C Engineering, and D&C Construction on the effluent pump room and PS5 projects. Other items listed below:
 - On 4/21 - Meet with Jason Urso on HVAC project kick-off Mtg. Roof inspection.
 - Co-ordination calls for PS5 for electrician after determining that programming of E7 drives needed.
 - Look at future roof replacement for Ops building and remaining years left on existing roof with Tecta America. Reviewing all of Tecta's proposals for roof repairs. Provide summary of all to the HSD on 4/29.
 - Steve Rose and Steve Clark from W&C in to look at Engin proj controls changes planned. Look at all Scada panels at plant.
- Conference calls on PS#5 / Effluent pump room project, coordinate with D&C Construction for remote PS work at LS A as needed and special MH [SMH-2] at plant. Calls/coordination calls with D&C and Engineering on the effluent MH, gate, and effluent pump room.
- Co-ordinate plant flow shutdowns for SMH-2 project and return plant to service. Effluent flow meter and isolation gate installed in sub-basement by D&C. Flow shutdowns on 4/6 & 4/7 & 4/19 for effluent pump check valves and isolation valve installation. For effluent pump #3, the piping shifted, and the work was stopped, as the piping supports, and pump supports appear to be rotted. Pictured: New effluent flow meter in sub-basement and effluent pump discharge valves and check valves.



- Purchase order issued for the installation of two new “deraggers” at PS#3 to help reduce the pump and check valve clogging/ragging issues. Mechanical Solutions Inc will provide the installation and be assisted by W&C and an electrician. Lead time estimated at 2-3 months out due to product availability and tech assistance needed. Estimated installation date – late June/July.
- Purchase order issued for new rear garage roll-up door to replace rotted/failed door. Other overhead doors in the garage that operate will also to be inspected and repaired as needed.
- Working on Town owned portable equipment list and registrations/license plates.

- Project **On Hold**: Sludge holding tank #1, the installation of diffuser piping. Having an additional tank for waste activated sludge storage would add to the storage capacity during the warmer months. Still to investigate what spare parts are on site and the additional parts/items needed. An update on the existing inventory of parts will be made with a recommended purchase cost and presented. Tank cleaning needed.
- Scope of work for PS 4 worked on to clarify the extent of additional piping and co-ordination needs. W&C met with D&C to review at the pump station. W&C recommends that the work be done by D&C Construction through the PS5/effluent gate project. Waiting for their proposal. Working with Nick V. Also looking at station bypass plan using the 8-inch Vortex pump.
- Continued work on the radio/communications project for communication between the plant and the pump stations. Provided location co-ordinates to TCS Communications, so that the path study work could begin. FCC license application process started.
- Continued evaluation of the replacement of one sludge transfer pump. This would replace the CH&E pump, which is obsolete. Pump vendors from two companies – Summit and Gorman Rupp being evaluated. Repair of the older pump assembly still being looked at as an option. New pump installation quote also being looked at.
- Contacted and worked with Mersino [previously Vortex], to finalize proposal to have 8-inch HDPE drop pipe installed at the influent manhole and a discharge pipe up the sidewall of the chlorine contact tanks. These connections would allow easier use of the 8-inch trash pump.
- Worked with vendor for polymer blending system, InfraRed electrical study, chopper pumps, sludge transfer pump to issue purchase orders for planned work at the plant. Received ok to proceed from HSD.
- Completed evaluation needs for various Bilco Hatch repairs – parts for hatch repair in several areas of the facility. Parts ordered.
- Review with staff – FRMahony's new E-1 repair policies and pump delivery form.
- Worked with Tecta America – roofing contractor on their proposal for roof repairs, based upon annual inspection. Also looked at what proposed roof work was being considered in the HVAC project, to avoid overlap or duplication of work.
- Ongoing - WC looked at several options for improving the pumping at LS A and based upon the current condition of the pumps and differences found when researching what is currently there. The station has had issues with low output for quite some time and this has decreased more due to internal wear of the pump wear rings and impellers. One of the pump impellers lacks a wear ring, as it was ordered that way several years ago. While the most expensive, WC is recommending the replacement of both pumps], and this would include relocation of the power disconnects out of the lower pump room to the street level. WC feels that this option offers the best long-term plan for the pump station and would include the addition of the seal

protection circuit. Quotes for new pumps were received from several vendors. Spare rotating assembly at plant – had IPS swap impeller to this unit, for Pump #2 installation.

- Participated with the HSD on 4/14/21 for the vac truck demo with “Sewer Equipment America”
- Order necessary QAQC samples for DMRQA Study 41., since some groundwater intrusion was occurring.
- PS #1 – found temporary plug from old inlet line had popped out. Worked with W&C Engineering, Aqualine to allow for sealing off the concrete
- Had W&C Scada group – Peter Obuchowski visits the plant to review all Scada panels, etc. and look at possible upgrade for the annunciator panel in the control room.



- Looking at additional electrical wiring/circuit for Effluent Pump # 2 and #3 [Flygt] for seal circuit protection. Moisture sensing relay for mechanical seals. Work with D&C, Engineering, and Town for effluent P3 issues and removal of additional bypass flow meter valves for blanking, to eliminate leakage when working in effluent wet well.
- **Ongoing [noted last month]:** Influent FM pipes in sub-basement – area of concern and being monitored. Outer pipe layer corroding away and breaking away from remaining pipe. Possible repair options still need to be investigated.
- Pending: GT1 sandblasting/painting – preliminary look at the possibility to have this project occur during the summer season – 2021. Coatings inquiry to Mfr. Nothing further to date.
- Already ordered with purchase order: D Street PS pump inspection and anode inspection and replace as needed with Industrial Pump Sales – Long lead time item for the anode blocks.

Asset Management Accounts - Year 6

		Actual to date			Projected for Final Estimate		
Account		Budgeted Amount	Spent to Date	Delta	Projected costs and incl PO's	Final est	Delta
06M-101A	Preventive Maint	\$210,555.68	\$154,019.53	\$56,536.15	\$0.00	\$154,019.53	\$56,536.15
06M-102B	Capital and Major Repairs	\$140,000.00	\$128,236.71	\$11,763.29	\$76,777.00	\$205,013.71	(\$65,013.71)
06M-103A	Major Sub Contractors	\$178,370.75	\$180,006.29	(\$1,635.54)	\$0.00	\$180,006.29	(\$1,635.54)
blank					\$0.00		
	Asset Management	\$528,926.43	\$462,262.53	\$66,663.90	\$76,777.00	\$539,039.53	(\$10,113.10)

\$66,663.90

06S	D Street	\$7,500.00	\$4,942.06	\$2,557.94	\$0.00	\$4,942.06	\$2,557.94
06C	Odor Control Chemicals	\$100,000.00	\$95,614.80	\$4,385.20	\$0.00	\$95,614.80	\$4,385.20

Estimated total remaining all accounts	(\$3,169.96)
---	--------------

Estimated total remaining 06M & 06C	(\$5,727.90)
--	--------------

Hull 2019 - 06M Projects, Tasks, and Needs - 05-06-2020 (AV)

Maintenance Account - Year 6 - 05_01_20 to 04_30_21

updates/comments 7/14/21

\$76,777.00

7/14/2021 11:53

Priority	Description	Status	completed	Task	Estimates & funds remaining	Final Completed Cost	Lead	Comments
1	Mechanical Work Labor by O&M specialists	completed		101A				Jody St. George, and WC Support Staff - estim \$3000/month; Total budget \$36,000; incl annual scrubber cleaning, remove old blowers [mech]; Adj made 9/9/20; adj 10/15; adj 11/25; Adj 1/6/21; Adj 1/28/21; adj 3/17/21, adj 4/6/21; adj 4/12
1	Pump and Motor Repairs [invoiced and pcard]	completed		101A				to keep existing equipment running - utilize various outside contractor repair shops, new purchases. Duperon motor, RST eurodrives, orig budget \$20,000; adj 10/15; RAS motor rewinding, influent motor rewind. Adj remaining \$5 10/29; Infl Pump #2 repairs - pending impeller repair & motor rewind [11/17]; Adj 11/25; adj 1/6/21; adj made 3/17; adj made 4/12; adj made 4/19; adj 5/3/21 to zero
1	Lubricants	completed		101A				Various Suppliers for oil and grease. Budgeted \$3500; adj 11/17; adj to \$1,500 1/28; Adj 3/3. Ordered additional lubricants March 2021.
1	Generator Repairs	completed		101A		\$2,760.80		General Repair Work - Original Placeholder \$3,000- PS4- \$2,800 & other; to date cost noted
1	Fire Alarm Inspections and Service	completed		101A				Semi Annual - Hart Security [October & April , central station, & Service]Orig budget \$3000, as of 11/17 \$1,500 pd.; adj 11/25; Planned April 2021 \$650
1	Universal waste disposal	Pending		101A				Placeholder - \$500; zero the budget, will incur if needed
1		Pending		101A				
1	Service the Forklift	completed		101A				\$400 - Annual cost - outside vendor; work completed. Waiting for report and invoice. 11/17 service completed.
1	Overhead Hoist Inspection	completed		101A				Annual task - Applied Dynamics - PO is issued for April, PO# 102708; Completed
1	Flow meter verification and calibration	Pending		101A				Annual - Ray Ferland 1 visit annually Aug/Sept. On hold as new effluent flow meter set to be installed April 2021 [orig budget \$1,000
1	Facility Building - Roof Inspection	completed		101A				\$2800 Annual Placeholder - Established contract with Tecta America [Visit #3] Bill to be paid late March. Report pending
1	Pump Station #9 - Repairs Immediate	pending		101A				New valve, new check valve, replace pump assembly - Jody St. G. to assist; items rec'd [used up approx 50% of orig 4,000]; pending to be used if needed.
1	Jerome H2S Meter Inspection	Pending		101A				\$1100 Placeholder for Annual Inspection - sent out includes annual service \$1100; 4/6 - may defer to 07M
1		Pending		101A				
1	butterfly valves for PW pumps 4 valves	completed		101A				purchase and install - expect November installation [staff & O&M] 11/17 - completed November 2020.
1	Hoisting platform ladder for the AST	Completed		101A				Completed, purchased for use with screenings box - \$600.00
1	Weather Station	completed		101A				Installed by Glenn F, June 2020, programming by SCADA group
1	Janitorial Supplies	completed		101A				Estimated annual expenditures - Orig budget \$4,000; adj 4 months - 9/9; adj 10/15; adj 1/6/21; adj 1/28; Adj budget to zero 3/24/21
1	Backflow device testing	Pending		101A				done by, 3rd party - orig budget \$400
1	Manhole Inspections	Pending		101A				As required, and/or scheduled

Hull 2019 - 06M Projects, Tasks, and Needs - 05-06-2020 (AV)

Maintenance Account - Year 6 - 05_01_20 to 04_30_21

updates/comments 7/14/21

\$76,777.00

7/14/2021 11:53

Priority	Description	Status	completed	Task	Estimates & funds remaining	Final Completed Cost	Lead	Comments
2	General mechanical and electrical items/supplies	completed		101A				Grainger, FWWebb, EJP, Hoadley, McMasterCarr, etc; orig budget \$18,000. Adj 9/9/20; adj 10/15; adj 10/29; adj 1/6/21; adj made 1/28; adj made 3/17; adj made 4/6 - budget to zero
2	IR Survey or Vibration Analysis Survey	completed		101A				Annual - 2 to 3 Days - Aeration System Blowers, Pump Station Pumps, etc./tbd; possibly Paul H from W&C; adj budget to \$2000 1/6/21. Could be 3-4 days of work \$4000; May happen in 07M??Reviewed and EESCO would be the contractor of choice. PO# 102815 - \$5550; On site for work 7/12 & 7/13
2	Valves	completed		101A				Replacements and/or Service - On-Going - As Needed; Placeholder - Cut planned budget to 2k 10/15; 4-inch valves ordered. May be some additional valves needed for PS 4; adj for plug valves received in Feb/Mar.
2	Hoses	completed		101A				Replacements and/or Service - On-Going - As Needed; Purchased three 6-inch hoses for the RAS bypass. [\$1800]; orig buget \$3000; addit 6" discharge hoses purchased Dec 2020
2	Sump Pumps	completed		101A				Replacements and/or Service - On-Going - As Needed - Cut budget from 1200 to \$600 11/17; adj 1/6/21 to zero; Purchasing as needed.
2	Install 6" or 8" drop pipes in secondary clarifier #1 and #2 OR 8-inch drop pipe for Infil manhole	completed		101A				Targeted budget \$2,000 - In-house staff to fabricate, ? go to 8" pipe? if needed??On hold, since effl MH work will have a standpipe for bypass pumping. Retarget \$ for infil MH 8-inch drop pipe, ordered 3/4/21; PO 103621 is in the checkbook. \$1,300; requested quote for effluent dischg pipe [estim \$6,421]
2	Effluent pump room pump bracket testing	Completed		101A				by Lightship Group - completed Aug 2020. On purchase order cost \$950]
2		Pending		101A				
2	Misc. Materials	completed		101A				Hardware Store - \$200.00 per month - reoccurring expense; orig budget \$2,400; adj to \$1,000 on 11/17; adj 1/6/21; adj 1/28; adj 3/17
2		Pending		101A				
2	PS 1 impellers/flow	Pending		101A				look at increasing size of impellers, after Gunrock work completed; on hold due to area low flows [\$5,000]
2	Lift Station A	Pending		101A				Pump efficiency lower than desired - new pump or impeller & mech seal
2		Pending		101A				
3	Install new aeration channel angle iron for a slide gate	Pending		101A				Jody S to install - 2 days, if we do \$2,500 estimate, or push to Engin project
3	Install a flow meter on the generator cooling water system - plant water	Pending		101A				Have an estimate [Oct 2018]; possible after 5/1/20
3	Lockers for the staff - install	completed		101A				Additional lockers ordered to replace those removed years ago; pending delivery, delivered June 2021
3	Purchase (1) spare Euro drives for the RST drum drive	Completed		101A				spare part item now in stock [\$800]
3	Purchase an LMI pump for the RST	Completed		101A				spare part item now in stock [\$1700]
2 of 63	7/14/2021 Purchase an equipment lift or gantry	Pending		101A	2020_05_01_06M_Checkbook_YTD			planned cost \$2,500 for moving elec hoists around, & other equip; delete item for November 2021 added costs

Hull 2019 - 06M Projects, Tasks, and Needs - 05-06-2020 (AV)

Maintenance Account - Year 6 - 05_01_20 to 04_30_21

updates/comments 7/14/21

\$76,777.00

7/14/2021 11:53

Priority	Description	Status	completed	Task	Estimates & funds remaining	Final Completed Cost	Lead	Comments
	Purchase Dehumidifiers for pump stations LS A & PS 4, PS 5. PS 6	Pending		101A				\$4,000 - orig budget for 4 pump stations - A, 4, 5, 6; delete budget to zero on 4/6;
		Pending		101A				
	Lab Equip Calibration	completed		101A				Annual service \$600- usually Jan/Feb. Last done April 2020. Will be May 2021 service
		Pending		101A				
	Mech seal[s] for RAS pumps 1 & 2	Pending		101A				Orig budget \$2,000 - for RAS pumps 1 & 2 - pending , but will need to do. Could defer to 07M; Adj to zero on 5/3
		Pending		101A				
	Vaughan chopper pumps - new pump ends for PSL & WAS	completed		102B				Had Rep in late Feb 2021 to look at all chopper pumps and will provide updated quotes for parts needed. \$\$ TBD. Recommending pump replacement for PSL pump #1; PO issued for \$15,950, completed July 2021
	Purchase Two 6" valves for PS 4	Completed		101A				Estim cost \$1450; Invoice paid.
	Springs for check valves	Completed		101A				Original budget \$400; Purchased
1	Tecta Roof Repairs - proposed per 2020 inspection	completed		102B				Estim: \$7,620.00 - TBD when work to be scheduled; will be in 2020 06M. 4/12 - Pending report for 2021; with report and additional items 4/28 - total adj up to 24,870.00; on a PO 4/29, completed June 2021
1	(GT) Steel rake mechanism inspection and needed repairs	completed						to be completed by NEPV under critical spares bond account. Completed at end of November.
1	(SC#1) Steel rake mechanism inspection and needed repairs	Completed						completed by Lydon under critical spares bond account.
1	(SC#2) Steel rake mechanism inspection and needed repairs	Completed						completed by Lydon under critical spares bond account.
1	Pri D-Box repairs	Pending		102B				possibly by D&C Construction as part of structural repair project. Estim \$15,000.
1	Replace scrubber recirc pump	completed		102B		\$2,410.80		spare pump ordered & received October 2020, bill pd Nov2020.
1	Sludge transfer pump #1 rebuild	completed		102B				Estim - parts - \$5,000 and rebuild pump needed. Still on target for rebuild 3/4 update. 3/4/21: Update: Unit sent out for evaluation. Revised quote & repairable. OK'd for repair - 4/9/21
1	Dynablend System is obsolete - mixing valve worn - need in kind or like system	completed		102B				May or may not proceed with replacement, since unit still functioning, and polymer addition point changed and yielding good results. Shutting down in December 2020. Cost \$12,000 might be held off. Took off list 3/24/21. Put mixing chamber estimate back on list 3/29 - \$5,717.10
2	grit classifier spare parts	Pending		102B				based on limited spare parts currently. Yet to be ordered [11/17]On hold pending grit screw operability 3/17; On hold 4/6; remove from planned budget 4/12 [\$3,800]
2	Pump Station Ladders	Pending		102B				We are complete except for PS #9; nothing further planned for PS 9, since new pump station planned.
2	Sanitaire hardware purchase for aer tk 1	Completed		102B		\$3,054.03		Purchased July 2020

Hull 2019 - 06M Projects, Tasks, and Needs - 05-06-2020 (AV)

Maintenance Account - Year 6 - 05_01_20 to 04_30_21

updates/comments 7/14/21

\$76,777.00

7/14/2021 11:53

Priority	Description	Status	completed	Task	Estimates & funds remaining	Final Completed Cost	Lead	Comments
2	Replace 6" potable water valve in basement and misc. valves	Pending		102B				While doing project check/replace 1 1/4 valves as needed - Requires a water shutdown, may hold until after 5/1/20; orig planned cost \$3,000.
2	Install (4-5) additional yard hydrants	completed		102B		\$10,563.64		original budget \$512,000 - hydrants already purchased, and materials & contractor installation [2 days]; 1st day completed Aug 2020 - \$5194.88. Second day planned early October - \$5,368.76.. 3 replacements planned. Completed 10/27; Need to roll up final costs. Hydrants and paving. Nov2020.
	Remaining yard paving - plant - WAS/PSL and by fuel tank	completed		102B		\$4,362.77		For plant work
2	PS 4 valves, check valves - installation	On Going		102B				Placeholder - After structural work, replace. Valves and check valves. May be a changeorder for D&C Constr.[\$4,000] Also 1 day for pump & hauling 2 trucks [\$3200]; More \$\$ will be needed here, due to scope changes. On hold 3/17; latest D&C estimate \$18,000; deleted 7,500 budgeted 4/6
3		Pending		102B				
3	Influent Distribution Box - Aerate Primary/Influent D-Box/Overflow Project	Pending		102B				Contracted Project - need State Approval - Facility/Process modification. Facilities Plan possible modification
3	Odor log data loggers & calibr kit	Pending		102B				Current units obsolete and not supported by company, possibly look at under 05C if funds avail; remove the \$6,000 on 2/6/20 - 06C or 06M
1	Jerome meter replacement	Pending		102B				replace unit, if done \$11,000
	Rotating Sludge Thickener - Thickened Sludge Pump - rotor/stator	Completed		101A				purchased spare stator approx cost \$900.
	D'Allessandro - WAS line replacement & gate valve	Completed		102B		\$16,018.78		Work Authorization submitted 10/14/20; paid Nov2020.
	GT sandblasting/painting	Pending		102B				Estimate \$45,000 - would need to go out for competitive bid request
	Lydon Labor - March & April	completed		103A		\$5,366.18		Sec WAS piping [1 day], Grit screw [2 days] if feasible to repair. [3 person crew] \$3400/day; pending invoices 4/6
	Truax \$\$ unspent	On Going		101A				Adjusted with latest Truax bill 4/28 \$1,910; zero'd out 7/14/21
	Electrical LS A hook up	completed		102B		\$1,182.28		estimate look at 2 options - going with option one for new hokk up only; early October planned. Completed Nov2020. Bill to be paid.
1	Electrical Work	On Going		103A				Electricians: Glen Fellows, HiVoltage, other; remv old blowers, lighting, sec bldg elec outlets - \$2,000/month; orig budget \$25,000; adj YTD - funds left; adj 9/30; Adj 10/15/20; adj 11/17/20; adj 1/6/21; clear remaining budget.
1	SCADA Work	On Going		103A				Steve Rose and the SCADA Support Team; orig budget \$25,000; reduce by \$6K on 9/9/20; adj 1/28; clear this budget, and costs will post as they are incurred. [1/28]
1	E-One Repairs and Replacement	completed		103A				Based on historical costs. E1 repairs where cost-effective & new replacement pumps; control panels, other equip; Orig budget \$25,000; adj made 1/6/21; adj made 1/28; adj 3/17 - reduce budget to zero, with recent purchases/repairs. Remaining parts/repairs 4/12/21;
1	Annual Generator inspection	completed		103A		\$4,900.00		Annual - Highland Power/ME Electrical Power - Generator PM/Service work - due in November, Early Dec target completion. Completed.
4 of 61	Automatic Transfer Switch inspection and servicing	Pending		103A	2020_05_01_06M_Checkbook_YTD			\$2400 - Annual Service planned for April Highland Power - NETS - Transfer Switch; Pad of Gen Svc PO. Gen Planned Costs

Hull 2019 - 06M Projects, Tasks, and Needs - 05-06-2020 (AV)

Maintenance Account - Year 6 - 05_01_20 to 04_30_21

updates/comments 7/14/21

\$76,777.00

7/14/2021 11:53

Priority	Description	Status	completed	Task	Estimates & funds remaining	Final Completed Cost	Lead	Comments
1	Wetwell Inspections and Cleaning - Pump Stations	On Going		103A				As required, plant or pump stations; orig budget \$10,000; reduce to zero on 9/9
1	Wetwell Inspection and Cleaning- Plant	On Going		103A				
1	Sewer Line Cleaning - Emergencies	On Going		103A				Placeholder - As required for various sub-contractors; could be Hoadley, Truax, WindRiver, BMC, or other, collection system & plant; orig budget \$10,000 ; YTD already over \$10k.
1	Collection System - emerg & unplanned calls - Jetting & CCTV work	On Going		103A				Budget - orig \$20,000; reduce it to \$10,000; adj down \$3,100 1/28; Use of Hoadley Vector truck through early march 2021. Adj 3/17; adj for 4/1 work
1	Collection System - Jetting Work & CCTV Truax \$35,000	On Going		103A				up to 35K - roadway proj work related - TBD for contractor [Truax] PO was issued. 11/25 - no work completed to date. Requested by HSD.
1	Aer tank repairs [labor]	Completed		103A				2 days - millwrights - Lydon \$3800
1	Pump Station communication - changover to radio - phase 1	On Going		102B	\$66,777.00			Equipment purchase to come from 06M/07M on the Critical Spare List; based on latest quote from Doug Tirrel. Updated 2021. 4/27: [\$74,602-\$7825.25 = \$66,776.75]
1	Pump Station communication - changover to radio - phase 2	On Going		102B				Equipment purchase to come from 06M/07M on the Critical Spare List; based on latest quote from Doug Tirrel. Updated memo Nov 2017
1	Pump Station communication - changover to radio - phase 3	On Going		102B				Equipment purchase to come from 06M/07M on the Critical Spare List; based on latest quote from Doug Tirrel. Updated memo Nov 2017
1	Pump Station communication - changover to radio - phase 4	On Going		102B				Equipment purchase to come from 06M/07M on the Critical Spare List; based on latest quote from Doug Tirrel. Updated memo Nov 2017
2	Pump Station Communication - electrical contractor services	On Going		102B	\$10,000.00			Electrician costs - Install antennae, and related components to allow for SCADA tie in.
2	Regen Aeration System - Pump Station #5	Pending		103A				Orig est \$1,500 - Tie into the SCADA system - Glen Fellows; may wait until after 5/1/20; on hold.
2	cancel Dehumidifiers at four pstat - install new EFF flow meter	completed		103A		\$2,066.48		Orig budget approx 2K per station - PS A,4, 5 & 6 - if done. Extra elec cost for new eff mag meter install incl here [added 3/29/21] Dehum on hold for 06M [4/12/21]
2	SHT1 - demo of equip, air piping & diffuser install/materials	Pending		103A				In-house O&M project and staff labor \$10,000; demo of tank equip \$5,000; air piping \$10,000; materials \$5,000 - rough estimate - future needs. Removing these \$\$ 30K [3/24/21]
2	Generators - Load Bank Testing Pump Stations	completed		103A		\$6,300.00		Look at under 06M - PS#1, PS#3, PS#4, PS#5, PS#6, and PS#9] Looking to do spring 2021. 2 units/day. \$6300 Completed June 2021
	Ted Berry - RAS line repairs	completed		102B		\$9,950.00		PO issued for anticipated repairs in mid-December, work completed, waiting for final bill
	Lydon Mech work - screenings box and Sec Bldg wye	completed		103A				Work completed - October 2020 - \$3,439.98 & \$2,767.28
	CPE - ABBA RAS pump rotating assembly	completed		102B				proposed cost \$8858 - on a purchase order.
	Generators - Load Bank Testing at plant	completed		103A		\$4,800.00		Gen #1 and #1 - last done 4 years ago - \$4800; Completed
	Highland Power/MSElectric&Power - Servicing the heat exchangers, fuel filters, etc	completed		103A		\$4,550.00		Per proposal \$4,550.00, Completed
	Front building window repairs	Pending		101A				To be done under Engin project
5 of 61	7/14/2021 Low pressure sewer valve box insp & mtce	Pending		103A	2020_05_01_06M_Checkbook_YTD			placeholder for contractor O&M inspections and potential repairs; Looking at Rosage Davis or another contractor & W&C to investigate; remove placeholder budget of \$7,500 on 1/28

2021 Planned Costs

Hull 2019 - 06M Projects, Tasks, and Needs - 05-06-2020 (AV)

Maintenance Account - Year 6 - 05_01_20 to 04_30_21

updates/comments 7/14/21

\$76,777.00

7/14/2021 11:53

Priority	Description	Status	completed	Task	Estimates & funds remaining	Final Completed Cost	Lead	Comments
1	Aeration Tank #3 - installation of new diffusers and piping grid	Pending		102B				\$50,000 Placeholder cost in the event needed
	LS A pumps - Repairs to P2 by Industrial Pump	On Going		101A				Placeholder - 4/12 - Evaluating cost for pump repair while replacement costs for parts or new pumps are looked at..
	LS A P2 suction valve replacement	Pending		101A				Vac truck, or pumper truck & Jody S, 1 day
	Deragger PS3	On Going		102B				2 units - for installation at PS 3; PO# 102752; electrician will be additional
1	Garage back side overhead door replacement	completed		102B				Solicited estimates for replacement.[estimate if approved]Overhead Door, Collins Door, on a PO:Completed
TOTAL					\$76,777.00			



Maintenance History Report

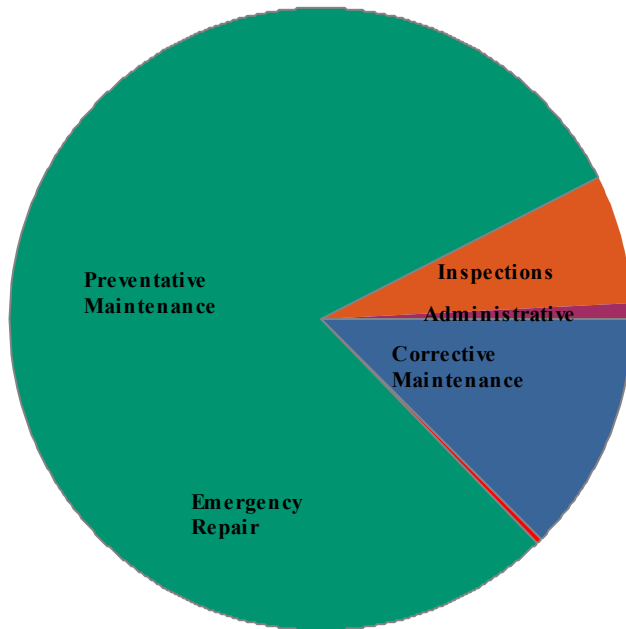
Hull Wastewater

Start Date: 4/1/2021

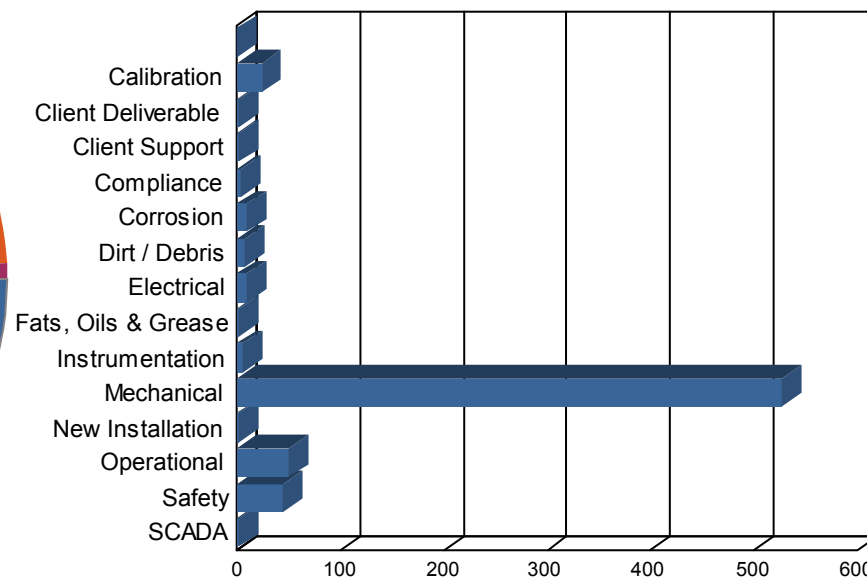
End Date: 4/30/2021

Work Order History By Type

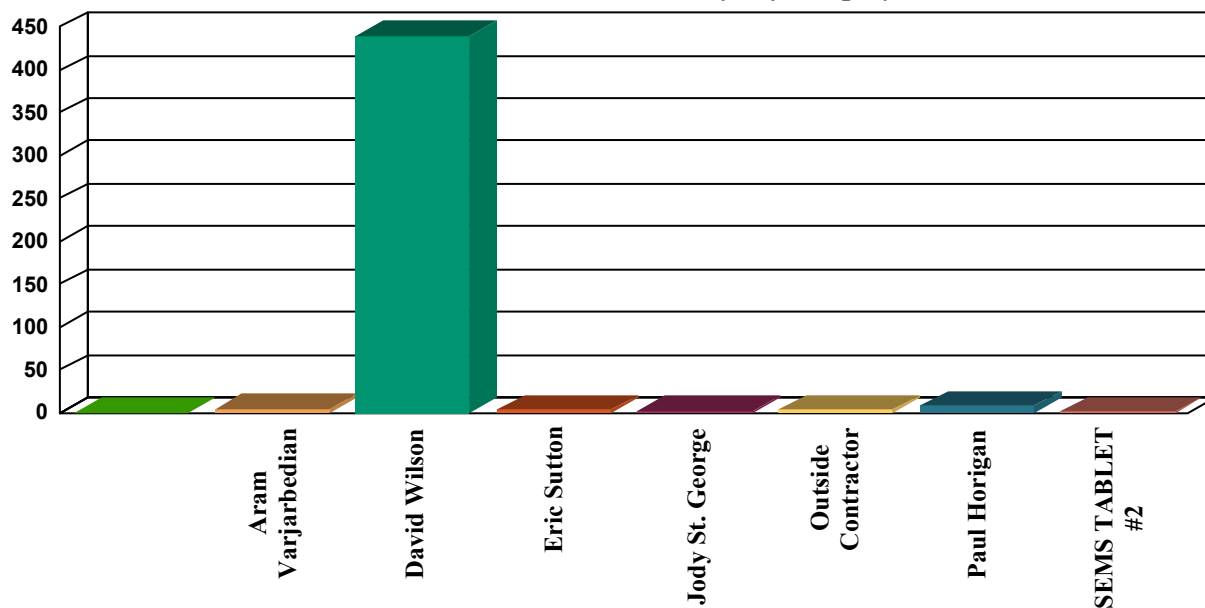
Administrative	6
Corrective Maintenance	87
Emergency Repair	1
Inspections	45
Preventative Maintenance	550
Total Work Orders	689



Work Order History by Reason



Work Order History By Employee



Employee	WO Count	Labor Hours
Aram Varjarbedian	5	1
David Wilson	439	24
Eric Sutton	3	8
Jody St. George	2	2
Outside Contractor	4	7
Paul Horigan	8	2
SEMS TABLET #2	1	0
Unassigned	227	1
Totals	689	44

Corrective Maintenance

Status Date	WO #	Asset Name	Work Description	Work History Note	Employee	Schedule Date	Status
4/1/21	13809	PS 1 Pump 1	Motor tripping out. No flow	DW/JB/MA LOTO of equipment. Removed cleanouts from side and suction elbow. Turned hub to expose debris. Removed a large amount of sanitary wipes. Reassembled and returned service.	David Wilson	4/1/21	Completed
4/5/21	13810	Ventis MX4 #3 - 4 Gas	Failed LEL sensor	Tested calibration. Failed LEL. Swapped out known good sensor to verify. Verified as bad.	David Wilson	4/5/21	Completed
4/6/21	13811	MH 20154	Remove obstruction from above and outside manhole	Prepared to do CSE but able to resolve without entry		4/6/21	Completed
4/16/21	13821	Sump Pump	Sump pump inoperable	Electrically isolated pump and separated check valve from discharge pipe. Removed and cleaned check valve. Reassembled and returned to service.	David Wilson	4/16/21	Completed
4/19/21	13822	Secondary Clarifiers	Install new hatch piston and chains on both scum pits	Completed	Jody St. George	4/19/21	Completed
4/19/21	13823	Influent Wet Well 1	New hatch lock	Completed	Jody St. George	4/19/21	Completed
4/24/21	13824	Emergency Lighting & exit signs	Failed lighting	Tested emergency lighting and found failed unit.	David Wilson	4/24/21	In Process
4/24/21	13831	RAS Pump 1	Clean and inspect impeller	LOTO of equipment. Separated pump from volute and cleared the debris from the impeller. Reassembled and returned to service.	David Wilson	4/24/21	Completed
4/24/21	13832	RAS Pump 2	Clean and inspect impeller	LOTO of equipment. Separated pump from volute and cleared the debris from the impeller. Reassembled and returned to service.	David Wilson	4/24/21	Completed
4/24/21	13825	Hypochlorite Pump 2	Replace siphoning pump head from W&M scrubber pump	Isolated pump. Replaced pump head. Made connections and checked for leaks. Returned to service.	David Wilson	4/24/21	Completed
4/24/21	13826	Hypochlorite Pump 3	Replace RAS Stenner pump fittings	Isolated pump and replaced fittings. Checked for leaks and returned to service.	David Wilson	4/24/21	Completed
4/28/21	7798	Generator #2 - Backup Detroit 500	Thermostats failed in open position	M&S Electric and Power refurbished heat exchanger and thermostat.		8/28/18	Completed
4/28/21	11740	PS Kholer Trailer Mounted Generator	Would not transfer power under load to station A			3/2/20	Completed
4/28/21	11744	PS Kholer Trailer Mounted Generator	Would not transfer power under load to station A			3/4/20	Completed
4/28/21	11745	PS Kholer Trailer Mounted Generator	Would not transfer power under load to station A			3/4/20	Completed
4/28/21	2112	30 - WW Treatment Plant - General	MCC 1 & 2 room needs door			4/14/16	Completed
4/28/21	4820	30 - WW Treatment Plant - General	Sludge Line for Above Ground Storage Tank and Gravity Thickener to Sludge Removal truck broken.			5/25/17	Completed
4/28/21	7962	31 - WW Headworks	corrosion at entrance area			9/11/18	Completed
4/28/21	447	31 - WW Headworks	H+S item #109 - Headworks Atmospheric hazards exis			7/27/15	Completed
4/28/21	481	34 - WW Secondary Treatment	Broken spring end socket on light fixture in ras/was pump room, second fixture from stairs			8/2/15	Completed
4/28/21	410	Operations Building	RST pump meter			7/22/15	Completed

Corrective Maintenance

Status Date	WO #	Asset Name	Work Description	Work History Note	Employee	Schedule Date	Status
4/28/21	416	Operations Building	RST pump meter			7/22/15	Completed
4/28/21	242	Effluent Pump Room	Wall switches difficult to operate			6/4/15	Completed
4/28/21	1085	Effluent Pump Room	Set up cl2 injection point at effluent outlet			11/9/15	Completed
4/28/21	2436	Secondary Building	Secondary pump room sludge pit obseletion of height is nearing high float alarm			6/6/16	Completed
4/28/21	238	Health & Safety	Keep blue extension cord in place			5/20/15	Completed
4/28/21	1075	Portable Equipment	Trailer mounted generator wouldn't start. Suspect low battery			11/4/15	Completed
4/28/21	6830	Exhaust Fan 4 Scrubber	Flappers broke from high wind			3/3/18	Completed
4/28/21	46	Exhaust Fan 1 Pump Room	Primary sludge Pump room exhaust fan needs repair			5/4/15	Completed
4/28/21	598	Influent Pump 1	Needed parts from suction valve on influent pump 1 to repair discharge valve on influent pump 1			9/1/15	Completed
4/28/21	366	Primary Clarifier 2 Drive System	Torque overload			7/7/15	Completed
4/28/21	201	Secondary Clarifier 2	Rake arm mounting			5/24/15	Completed
4/28/21	2450	Secondary Clarifier 2	Drive unit has multiple issues, torque overload box corroded and separated from drive unit. Oil seal on euro drive lower sprocket and shaft needs replacement! Wiring and junction box corrosion, needs			6/9/16	Completed
4/28/21	200	Aeration Tank 1	Slide valve does not close all of the way			5/24/15	Completed
4/28/21	1711	Hypochlorite System	Hypo piping leak at valve where hypo is dispensed to pail or container			2/22/16	Completed
4/28/21	7939	Hypochlorite Pump 3	USA BLUE BOOK RAS PUMP GRINDING NO FLOW			8/19/18	Completed
4/28/21	1922	Odor Control System	Signals for pH and ORP stuck in SCADA			3/12/16	Completed
4/28/21	1252	Wet Scrubber Fan	Existing bolts are stripped on wet scrubber fan.			12/3/15	Completed
4/28/21	1155	RAS Pump 3	Motor overload			11/30/15	Completed
4/28/21	1732	RAS Pump 3	Slight Leak coming from pump			2/28/16	Completed
4/28/21	1914	RST unit	Polymer system needs rehab			3/7/16	Completed
4/28/21	319	RST unit	Need interlocks and auto shutdown mechanisms for RST.			6/20/15	Completed
4/28/21	1288	RST unit	Inspect for off season maintenance and repair			12/16/15	Completed
4/28/21	10384	RST unit	Camera, consider installing unused camera on RST hopper to aid in daily ops.			7/14/19	Completed
4/28/21	678	Sludge Transfer Pump 2	Strong vibration and loud sound when pump is active.			9/30/15	Completed

Corrective Maintenance

Status Date	WO #	Asset Name	Work Description	Work History Note	Employee	Schedule Date	Status
4/28/21	5030	PS 4	Storm Drain pipe running underneath Rockwall formation has a flapper disconnected from main line.			6/26/17	Completed
4/28/21	927	PS 1 Pump 2	Louder than normal bearing noise on pump 2 suspect pump and or motor bearings			10/22/15	Completed
4/28/21	1073	PS 3 Generator	Cover battery terminals			11/3/15	Completed
4/28/21	932	PS 3 Pump 1	Pump base not secured			10/22/15	Completed
4/28/21	933	PS 3 Pump 2	Pump base not secured			10/22/15	Completed
4/28/21	930	PS 9 Pump 1	Pump base not anchored			10/22/15	Completed
4/28/21	931	PS 9 Pump 2	Pump base not secured			10/22/15	Completed
4/28/21	605	PS 9 Pump 2	Vibration check on housing of pump 2 . Motor and pump not installed as of this time , test vibration at housing of pump 2			9/4/15	Completed
4/28/21	1641	Blend Box	Valves to sludge storage tanks are inoperable			2/17/16	Completed
4/28/21	217	Plant Water Pump 2	Plant water pump 2 Seal failure			5/28/15	Completed
4/28/21	562	PS 9 Piping and Valves	Valve for pump 1 and check valve for pump 1			8/26/15	Completed
4/28/21	71	PS 9 Exhaust Fan	PS 9 Vent duct work deteriorating			5/6/15	Completed
4/28/21	1916	Aeration Tank 2 Motor	Test run aeration motor and drive under load condition,			3/11/16	Completed
4/28/21	5574	PS D Building	Need fire extinguisher			9/11/17	Completed
4/28/21	1920	MCC 1	Bucket for SC2 motor - Overload heater failed. Needs repl.			3/12/16	Completed
4/28/21	2252	Portable Diesel Pump 4A Thompson 4" 600 - 700gpm	Water in exhaust during test run			5/5/16	Completed
4/28/21	11402	PS 5 Generator	Block heater failure			1/5/20	Completed
4/28/21	2629	Roof - Operations Building	fix siding at roof door			7/7/16	Completed
4/28/21	5412	23 - WW Pump Stations	Pump st 1 clean out			8/25/17	Completed
4/28/21	72	23 - WW Pump Stations	Bypass SOPs at each station			5/6/15	Completed
4/28/21	1267	RAS System	Pump failure, seized bearings on lower part of pump 3			12/10/15	Completed
4/28/21	1957	Effluent Pump #1 discharge valve	Valve will not turn			3/29/16	Completed
4/28/21	1956	Effluent Pump #2 discharge valve	Will not turn			3/29/16	Completed
4/28/21	352	Aerated Grit Chamber	Air pipe leaking at gasket-flange			6/29/15	Completed
4/28/21	6202	Grit Pumps	Remove packing due to leaking			12/12/17	Completed
4/28/21	483	Mechanical Screen & Washpress System	Document new screw conveyor			8/3/15	Completed

Corrective Maintenance

Status Date	WO #	Asset Name	Work Description	Work History Note	Employee	Schedule Date	Status
4/28/21	1918	Generator #2 - Backup Detroit 500	Regulator for cooling water			3/12/16	Completed
4/28/21	6370	Recirculation Pump #2	Found scrubber recirc pump 2 not pumping, switched to pump #1			1/15/18	Completed
4/28/21	11559	PS 6 Generator	Waterpump port leaking.			2/2/20	Completed
4/28/21	11580	Emergency Lighting & exit signs	Monthly emergency lighting inspection			2/13/20	Completed
4/28/21	13199	RAS Pump 3	Remove motor and rotating assy for volute repair			12/28/20	Completed
4/28/21	12694	PS 4 Generator	Auxiliary belts squealing and water pump seal weeping.			9/28/20	Completed
4/28/21	12695	PS 4 Generator	Block heater failure.			9/29/20	Completed
4/28/21	12227	PS 4 Building	Graffiti on pump station.			6/14/20	Completed
4/28/21	11764	Emergency Lighting & exit signs	Failed emergency light in effluent pump room			3/17/20	Completed
4/28/21	12833	PS 3 Building	Sump pump not functioning.			10/7/20	Completed
4/28/21	4281	Aeration Blower 2	Excessive oil consumption on aeration blower 2 at PTO end of blower suspect that the shaft seal is worn.			3/22/17	Completed
4/28/21	12684	RAS Pump 3	Lower pump seal leaking RAS into seal water.			9/16/20	Completed
4/28/21	12687	Plant Water Pump 1	Low discharge pressure.			9/22/20	Completed
4/28/21	5176	PS 5 Pump 2	Pump 2 is leaking at the mechanical seal ,cartridge type seal.			7/19/17	Completed
4/28/21	5793	PS 9 Pump 1	Zerk fitting not working.			10/18/17	Completed
4/28/21	5791	PS 9 Pump 2	Discharge isolation valve inoperable.			10/18/17	Completed

Emergency Repair

Status Date	WO #	Asset Name	Work Description	Work History Note	Employee	Schedule Date	Status
4/28/21	6841	Portable Diesel Pump 6A Thompson 6" 900 - 1000 gpm	Set up 6" pump near ball field / ocean Ave.			3/6/18	Completed

Inspections

Status Date	WO #	Asset Name	Work Description	Work History Note	Employee	Schedule Date	Status
4/7/21	13365	Eyewash Stations	WWTF Eyewash Inspection - Weekly		David Wilson	4/4/21	Completed
4/7/21	13446	Fire Extinguishers	WWTF Fire Extinguisher Inspections - Monthly		David Wilson	4/5/21	Completed
4/12/21	13366	Eyewash Stations	WWTF Eyewash Inspection - Weekly		David Wilson	4/11/21	Completed
4/13/21	13460	Secondary Electrical Control Manhole	Inspect Secondary Electrical Manhole		David Wilson	4/6/21	Completed
4/15/21	13461	Primary Electrical Power Manhole	Inspect Primary Electrical Manhole		David Wilson	4/6/21	Completed

Inspections

Status Date	WO #	Asset Name	Work Description	Work History Note	Employee	Schedule Date	Status
4/20/21	13367	Eyewash Stations	WWTF Eyewash Inspection - Weekly		David Wilson	4/18/21	Completed
4/21/21	13408	PS 1	PS #1 Inspection - Monthly		David Wilson	4/1/21	Completed
4/21/21	13409	PS 3	PS #3 Inspection - Monthly		David Wilson	4/1/21	Completed
4/21/21	13414	PS A	PS #A Inspection - Monthly		David Wilson	4/1/21	Completed
4/21/21	13410	PS 4	PS #4 Inspection - Monthly		David Wilson	4/1/21	Completed
4/21/21	13413	PS 9	PS #9 Inspection - Monthly		David Wilson	4/1/21	Completed
4/21/21	13412	PS 6	PS #6 Inspection - Monthly		David Wilson	4/1/21	Completed
4/24/21	13370	Emergency Lighting & exit signs	Emergency Lighting Inspection - Monthly	Found a set of emergency lighting not working. Corrective work order created. In process.	David Wilson	4/14/21	Completed
4/26/21	13368	Eyewash Stations	WWTF Eyewash Inspection - Weekly		David Wilson	4/25/21	Completed
4/26/21	13459	Truck 2 - 2009 Chevy 2500 HD	Monthly vehicle inspection on do-Forms	Annual State inspection completed as well as oil and filter change.	David Wilson	4/5/21	Completed
4/26/21	13468	Truck 3 - 2015 Chevy 3500 HD	Monthly vehicle inspection on do-Forms	Monthly inspection completed. Front passenger side beacon LED failed as well as rear passenger side reverse lamp.	David Wilson	4/5/21	Completed
4/28/21	11049	Truck 2 - 2009 Chevy 2500 HD	Monthly vehicle inspection on do-Forms			1/6/20	Completed
4/28/21	12861	Eyewash Stations	WWTF Eyewash Inspection - Weekly			1/3/21	Completed
4/28/21	12862	Eyewash Stations	WWTF Eyewash Inspection - Weekly			1/10/21	Completed
4/28/21	12863	Eyewash Stations	WWTF Eyewash Inspection - Weekly			1/17/21	Completed
4/28/21	12864	Eyewash Stations	WWTF Eyewash Inspection - Weekly			1/24/21	Completed
4/28/21	12865	Eyewash Stations	WWTF Eyewash Inspection - Weekly			1/31/21	Completed
4/28/21	13024	Eyewash Stations	WWTF Eyewash Inspection - Weekly			2/7/21	Completed
4/28/21	12537	Influent Pump 2	Unusual noises radiating from top half of pump assembly.			8/25/20	Completed
4/28/21	13080	PS 1	PS #1 Inspection - Monthly			2/4/21	Completed
4/28/21	13081	PS 3	PS #3 Inspection - Monthly			2/4/21	Completed
4/28/21	13084	PS 4	PS #4 Inspection - Monthly			2/4/21	Completed
4/28/21	13085	PS 5	PS #5 Inspection - Monthly			2/4/21	Completed
4/28/21	13088	PS 6	PS #6 Inspection - Monthly			2/4/21	Completed
4/28/21	13089	PS 9	PS #9 Inspection - Monthly			2/4/21	Completed
4/28/21	13092	PS A	PS #A Inspection - Monthly			2/4/21	Completed
4/28/21	13028	Emergency Lighting & exit signs	Emergency Lighting Inspection - Monthly			2/10/21	Completed
4/28/21	12866	Emergency Lighting & exit signs	Emergency Lighting Inspection - Monthly			1/13/21	Completed

Inspections

Status Date	WO #	Asset Name	Work Description	Work History Note	Employee	Schedule Date	Status
4/28/21	12947	Truck 1 - 2010 Dodge Ram 1500	Monthly vehicle inspection on do-Forms			1/4/21	Completed
4/28/21	11694	Truck 1 - 2010 Dodge Ram 1500	Monthly vehicle inspection on do-Forms			5/4/20	Completed
4/28/21	12957	Truck 2 - 2009 Chevy 2500 HD	Monthly vehicle inspection on do-Forms			1/4/21	Completed
4/28/21	12964	Truck 3 - 2015 Chevy 3500 HD	Monthly vehicle inspection on do-Forms			1/4/21	Completed
4/28/21	12965	Truck 4 - 2015 Nissan Frontier	Monthly vehicle inspection on do-Forms			1/4/21	Completed
4/28/21	12944	Fire Extinguishers	WWTF Fire Extinguisher Inspections - Monthly			1/4/21	Completed
4/28/21	13125	Fire Extinguishers	WWTF Fire Extinguisher Inspections - Monthly			2/1/21	Completed
4/28/21	13449	Truck 1 - 2010 Dodge Ram 1500	Monthly vehicle inspection on do-Forms	Inspected vehicle. Intermittent code was Knock Sensor bank 1.	David Wilson	4/5/21	Completed
4/30/21	13463	Universal waste area	Universal Waste Storage Area Inspection	Insp area ok	Aram Varjarbedian	4/13/21	Completed
4/30/21	13462	Waste Oil Storage	Waste Oil Area Inspection	Insp area ok	Aram Varjarbedian	4/13/21	Completed
4/30/21	13469	Truck 4 - 2015 Nissan Frontier	Monthly vehicle inspection on do-Forms	NO ISSUES, insp veh ok. Recent oil chg early April. Current mileage 122,000+	Aram Varjarbedian	4/5/21	Completed
4/30/21	13329	AST- Above Ground Storage tank for diesel fuel	Annual - AST inspection	Did annual insp.	Aram Varjarbedian	3/1/21	Completed

Preventative Maintenance

Status Date	WO #	Asset Name	Work Description	Work History Note	Employee	Schedule Date	Status
4/1/21	13241	Wet Scrubber Fan	Scrubber Exhaust Fan PM - Monthly		David Wilson	3/10/21	Completed
4/1/21	13236	Aeration Blower 1	Aeration Blower #1 Air Filter Inspection - monthly		David Wilson	3/23/21	Completed
4/1/21	13237	Aeration Blower 2	Aeration Blower #2 Air Filter Inspection - Monthly		David Wilson	3/25/21	Completed
4/4/21	13470	High level floats	Weekly High Float Alarm test		David Wilson	4/4/21	Completed
4/5/21	13238	Aeration Tank 1 Oxygen Probe	AT #1 DO Probe Clean and Calibrate - Monthly		David Wilson	3/2/21	Completed
4/5/21	13239	Aeration Tank 3 Oxygen Probe	AT #3 DO Probe Clean and Calibrate - Monthly		David Wilson	3/2/21	Completed
4/5/21	13395	Aeration Tank 1 Oxygen Probe	AT #1 DO Probe Clean and Calibrate - Monthly		David Wilson	4/6/21	Completed
4/5/21	13396	Aeration Tank 3 Oxygen Probe	AT #3 DO Probe Clean and Calibrate - Monthly		David Wilson	4/6/21	Completed
4/5/21	13447	GasAlert Max XTII #1	4 gas meter calibration - monthly		David Wilson	4/1/21	Completed
4/5/21	13474	Meters - 4 Gas Confined Space #2	4 gas meter calibration - monthly		David Wilson	4/1/21	Completed
4/5/21	13307	Ventis MX4 #2 - 4 Gas	4 Gas Meter #2 Calibration - Monthly		David Wilson	3/25/21	Completed
4/5/21	13311	Ventis MX4 #6 - 4 Gas	4 Gas Meter #6 Calibration - Monthly		David Wilson	3/25/21	Completed
4/5/21	13308	Ventis MX4 #3 - 4 Gas	4 Gas Meter #3 Calibration - Monthly		David Wilson	3/25/21	Completed
4/5/21	13315	GasAlert Max XTII #2	monthly calibration		David Wilson	3/25/21	Completed

Preventative Maintenance

Status Date	WO #	Asset Name	Work Description	Work History Note	Employee	Schedule Date	Status
4/5/21	13309	Ventis MX4 #4 - 4 Gas	4 Gas Meter #4 Calibration - Monthly		David Wilson	3/25/21	Completed
4/5/21	13310	Ventis MX4 #5 - 4 Gas	4 Gas Meter #5 Calibration - Monthly		David Wilson	3/25/21	Completed
4/6/21	13453	PS Kholer Trailer Mounted Generator	Generator - Monthly Load Test		David Wilson	4/4/21	Completed
4/6/21	13478	Generators "All Pump Station"	Generator - Monthly Load Test		David Wilson	4/4/21	Completed
4/6/21	13217	Generator #1- Emergency Kohler 750	Generator Weekly - Test Run no load		David Wilson	3/29/21	Completed
4/6/21	13305	PS Kholer Trailer Mounted Generator	Generator Weekly - Test Run no load		David Wilson	3/29/21	Completed
4/6/21	13212	Generator #2 - Backup Detroit 500	Generator Weekly - Test Run no load		David Wilson	3/29/21	Completed
4/6/21	13812	Health & Safety	Electric hoist and chain fall inspections	Eric and hoist inspection co inspected 19 of 19 chain falls and electric hoists at plant and stations	Eric Sutton	4/6/21	Completed
4/7/21	13382	Influent Sluice Isolation Gate	Weekly operate through full range	Steps 37-41 and 75-77 tight spots while closing.	Aram Varjarbedian	4/7/21	Completed
4/7/21	13223	Influent Sluice Isolation Gate	Weekly operate through full range	Fine opening up.	David Wilson	3/31/21	Completed
4/7/21	13222	Influent Sluice Isolation Gate	Weekly operate through full range		David Wilson	3/24/21	Completed
4/7/21	13482	All Plant Gear box reducers	GEAR BOX MAINT - WEEKLY		David Wilson	4/4/21	Completed
4/7/21	13404	Primary Sludge Pump 1	Monthly Check Pump Couplings	Pump out of service. Waiting on parts.	David Wilson	4/7/21	Completed
4/7/21	13407	Sludge Transfer Pump 2	Monthly Check Pump Couplings	Pump out of service.	David Wilson	4/7/21	Completed
4/8/21	13232	Influent Pump 4	Monthly Check Pump Couplings		David Wilson	3/3/21	Completed
4/8/21	13234	Influent Pump 5	Influent Pump #5 PM & Inspection - SEMI ANNUAL		David Wilson	3/1/21	Completed
4/8/21	13233	Influent Pump 4	Influent Pump #4 PM & Inspection -SEMI ANNUAL		David Wilson	3/1/21	Completed
4/8/21	13231	Influent Pump 3	Monthly Check Pump Couplings		David Wilson	3/3/21	Completed
4/8/21	13228	Influent Pump 2	Monthly Check Pump Couplings		David Wilson	3/3/21	Completed
4/8/21	13227	Influent Pump 1	Monthly Check Pump Couplings		David Wilson	3/3/21	Completed
4/8/21	13230	Influent Pump 3	Influent Pump #3 PM & Inspection - SEMI ANNUAL		David Wilson	3/1/21	Completed
4/8/21	13229	Influent Pump 2	Influent Pump #2 PM & Inspection - SEMI ANNUAL		David Wilson	3/1/21	Completed
4/8/21	13226	Influent Pump 1	Influent Pump #1 PM & Inspection - SEMI ANNUAL		David Wilson	3/1/21	Completed
4/8/21	13392	Influent Pump 5	Monthly Check Pump Couplings		David Wilson	4/7/21	Completed
4/8/21	13391	Influent Pump 4	Monthly Check Pump Couplings		David Wilson	4/7/21	Completed
4/8/21	13390	Influent Pump 3	Monthly Check Pump Couplings		David Wilson	4/7/21	Completed
4/8/21	13389	Influent Pump 2	Monthly Check Pump Couplings		David Wilson	4/7/21	Completed
4/8/21	13388	Influent Pump 1	Monthly Check Pump Couplings		David Wilson	4/7/21	Completed

Preventative Maintenance

Status Date	WO #	Asset Name	Work Description	Work History Note	Employee	Schedule Date	Status
4/9/21	13402	RST Feed Pump 1	Monthly Check Pump Couplings		David Wilson	4/7/21	Completed
4/9/21	13403	RST Feed Pump 2	Monthly Check Pump Couplings		David Wilson	4/7/21	Completed
4/9/21	13405	Primary Sludge Pump 2	Monthly Check Pump Couplings		David Wilson	4/7/21	Completed
4/9/21	13406	Sludge Transfer Pump 1	Monthly Check Pump Couplings		David Wilson	4/7/21	Completed
4/9/21	13363	Portable Generator - Honda	Portable Generator Inspection - Monthly		David Wilson	4/7/21	Completed
4/9/21	13218	Fixed Gas Monitoring System	Quarterly Calibration Headworks room gas meters		David Wilson	3/3/21	Completed
4/9/21	13387	Mechanical Screen & Washpress System	Annual Maintenance		David Wilson	4/5/21	Completed
4/13/21	13376	Generator #1- Emergency Kohler 750	Generator Weekly - Test Run no load		David Wilson	4/12/21	Completed
4/13/21	13479	Generators "All Pump Station"	Generator Weekly - Test Run no load		David Wilson	4/12/21	Completed
4/13/21	13450	PS Kohler Trailer Mounted Generator	Generator Weekly - Test Run no load		David Wilson	4/12/21	Completed
4/13/21	13372	Generator #2 - Backup Detroit 500	Generator Weekly - Test Run no load		David Wilson	4/12/21	Completed
4/13/21	13820	RST unit	RST Annual Maintenance	Inspected all system components. Disassembled and cleaned polymer system. Verified function of all components. Replaced two drum wheels. Lubricated and adjust drive chain. Tested high level switch.	David Wilson	4/13/21	Completed
4/14/21	13477	FIRE ALARM SYSTEM	Fire alarm - semi annual	Semi annual insp done. No issues. By Hart Security/Automatic Alarm	Outside Contractor	4/5/21	Completed
4/16/21	13471	High level floats	Weekly High Float Alarm test		David Wilson	4/11/21	Completed
4/16/21	13417	PS 1 Generator	PS #1 Generator Inspection and Test - Weekly		David Wilson	4/14/21	Completed
4/19/21	13398	Wet Scrubber Fan	Scrubber Exhaust Fan PM - Monthly	Inspected all bearings. Replaced belts due to glazing. Set deflection.	David Wilson	4/14/21	Completed
4/20/21	13377	Generator #1- Emergency Kohler 750	Generator Weekly - Test Run no load		David Wilson	4/19/21	Completed
4/20/21	13373	Generator #2 - Backup Detroit 500	Generator Weekly - Test Run no load		David Wilson	4/19/21	Completed
4/20/21	13397	Effluent Pumps	Effluent Pump - Monthly	Effluent pump 3 is locked out due to failure of discharge pipe support assembly.	David Wilson	4/15/21	Completed
4/20/21	13240	Effluent Pumps	Effluent Pump - Monthly	Vibrations noted between certain frequencies of operation on pump 3.	David Wilson	3/15/21	Completed
4/20/21	13058	Effluent Pumps	Effluent Pump - Monthly		David Wilson	2/15/21	Completed
4/20/21	13451	PS Kohler Trailer Mounted Generator	Generator Weekly - Test Run no load		David Wilson	4/19/21	Completed
4/20/21	13480	Generators "All Pump Station"	Generator Weekly - Test Run no load		David Wilson	4/19/21	Completed
4/20/21	13484	All Plant Gear box reducers	GEAR BOX MAINT - WEEKLY		David Wilson	4/18/21	Completed
4/20/21	13483	All Plant Gear box reducers	GEAR BOX MAINT - WEEKLY		David Wilson	4/11/21	Completed

Preventative Maintenance

Status Date	WO #	Asset Name	Work Description	Work History Note	Employee	Schedule Date	Status
4/21/21	13383	Influent Sluice Isolation Gate	Weekly operate through full range	Tight spots on closing between 77-74 steps and 45-43 steps. Opened without issue.	David Wilson	4/14/21	Completed
4/21/21	13384	Influent Sluice Isolation Gate	Weekly operate through full range		David Wilson	4/21/21	Completed
4/21/21	13472	High level floats	Weekly High Float Alarm test		David Wilson	4/18/21	Completed
4/24/21	13394	Aeration Blower 2	Aeration Blower #2 Air Filter Inspection - Monthly	Replaced air filter and washed take off.	David Wilson	4/22/21	Completed
4/26/21	13473	High level floats	Weekly High Float Alarm test		David Wilson	4/25/21	Completed
4/26/21	13485	All Plant Gear box reducers	GEAR BOX MAINT - WEEKLY		David Wilson	4/25/21	Completed
4/27/21	13378	Generator #1- Emergency Kohler 750	Generator Weekly - Test Run no load	Heat exchangers serviced by M&S Electric and Power.	Outside Contractor	4/26/21	Completed
4/28/21	13717	Primary Sludge Pump 2	Monthly Check Pump Couplings	incorporated as a step in monthly inspection	SEMS TABLET #2	6/2/21	Completed
4/28/21	11327	PS 1 Generator	PS #1 Generator Inspection and Test - Weekly		David Wilson	3/4/20	Completed
4/28/21	11329	PS 1 Generator	PS #1 Generator Inspection and Test - Weekly		David Wilson	3/18/20	Completed
4/28/21	11330	PS 1 Generator	PS #1 Generator Inspection and Test - Weekly		David Wilson	3/25/20	Completed
4/28/21	11479	PS 1 Generator	PS #1 Generator Inspection and Load Test - Monthly		David Wilson	4/1/20	Completed
4/28/21	11481	PS 1 Generator	PS #1 Generator Inspection and Test - Weekly		David Wilson	4/8/20	Completed
4/28/21	11482	PS 1 Generator	PS #1 Generator Inspection and Test - Weekly		David Wilson	4/15/20	Completed
4/28/21	11483	PS 1 Generator	PS #1 Generator Inspection and Test - Weekly		David Wilson	4/22/20	Completed
4/28/21	11484	PS 1 Generator	PS #1 Generator Inspection and Test - Weekly		David Wilson	4/29/20	Completed
4/28/21	11176	PS 1 Generator	PS #1 Generator Inspection and Load Test - Monthly		David Wilson	2/5/20	Completed
4/28/21	11177	PS 1 Generator	PS #1 Generator Inspection and Test - Weekly		David Wilson	2/5/20	Completed
4/28/21	11178	PS 1 Generator	PS #1 Generator Inspection and Test - Weekly		David Wilson	2/12/20	Completed
4/28/21	11179	PS 1 Generator	PS #1 Generator Inspection and Test - Weekly		David Wilson	2/19/20	Completed
4/28/21	11180	PS 1 Generator	PS #1 Generator Inspection and Test - Weekly		David Wilson	2/26/20	Completed
4/28/21	10998	PS 1 Generator	PS #1 Generator Inspection and Test - Weekly		David Wilson	1/1/20	Completed
4/28/21	10999	PS 1 Generator	PS #1 Generator Inspection and Test - Weekly		David Wilson	1/8/20	Completed
4/28/21	11000	PS 1 Generator	PS #1 Generator Inspection and Test - Weekly		David Wilson	1/15/20	Completed
4/28/21	11001	PS 1 Generator	PS #1 Generator Inspection and Test - Weekly		David Wilson	1/22/20	Completed
4/28/21	11002	PS 1 Generator	PS #1 Generator Inspection and Test - Weekly		David Wilson	1/29/20	Completed
4/28/21	11003	PS 1 Generator	PS #1 Generator Inspection and Load Test - Monthly		David Wilson	1/1/20	Completed
4/28/21	11004	PS 3 Generator	PS #3 Generator Inspection and Load Test - Monthly		David Wilson	1/1/20	Completed

Preventative Maintenance

Status Date	WO #	Asset Name	Work Description	Work History Note	Employee	Schedule Date	Status
4/28/21	11005	PS 3 Generator	PS #3 Generator Inspection and Test - Weekly		David Wilson	1/1/20	Completed
4/28/21	11006	PS 3 Generator	PS #3 Generator Inspection and Test - Weekly		David Wilson	1/8/20	Completed
4/28/21	11007	PS 3 Generator	PS #3 Generator Inspection and Test - Weekly		David Wilson	1/15/20	Completed
4/28/21	11008	PS 3 Generator	PS #3 Generator Inspection and Test - Weekly		David Wilson	1/22/20	Completed
4/28/21	11009	PS 3 Generator	PS #3 Generator Inspection and Test - Weekly		David Wilson	1/29/20	Completed
4/28/21	11181	PS 3 Generator	PS #3 Generator Inspection and Test - Weekly		David Wilson	2/5/20	Completed
4/28/21	11182	PS 3 Generator	PS #3 Generator Inspection and Test - Weekly		David Wilson	2/12/20	Completed
4/28/21	11183	PS 3 Generator	PS #3 Generator Inspection and Test - Weekly		David Wilson	2/19/20	Completed
4/28/21	11184	PS 3 Generator	PS #3 Generator Inspection and Test - Weekly		David Wilson	2/26/20	Completed
4/28/21	11185	PS 3 Generator	PS #3 Generator Inspection and Load Test - Monthly		David Wilson	2/5/20	Completed
4/28/21	11486	PS 3 Generator	PS #3 Generator Inspection and Test - Weekly		David Wilson	4/8/20	Completed
4/28/21	11487	PS 3 Generator	PS #3 Generator Inspection and Test - Weekly		David Wilson	4/15/20	Completed
4/28/21	11488	PS 3 Generator	PS #3 Generator Inspection and Test - Weekly		David Wilson	4/22/20	Completed
4/28/21	11489	PS 3 Generator	PS #3 Generator Inspection and Test - Weekly		David Wilson	4/29/20	Completed
4/28/21	11490	PS 3 Generator	PS #3 Generator Inspection and Load Test - Monthly		David Wilson	4/1/20	Completed
4/28/21	11331	PS 3 Generator	PS #3 Generator Inspection and Test - Weekly		David Wilson	3/4/20	Completed
4/28/21	11333	PS 3 Generator	PS #3 Generator Inspection and Test - Weekly		David Wilson	3/18/20	Completed
4/28/21	11334	PS 3 Generator	PS #3 Generator Inspection and Test - Weekly		David Wilson	3/25/20	Completed
4/28/21	11337	PS 4 Generator	PS #4 Generator Inspection and Test - Weekly		David Wilson	3/4/20	Completed
4/28/21	11339	PS 4 Generator	PS #4 Generator Inspection and Test - Weekly		David Wilson	3/18/20	Completed
4/28/21	11340	PS 4 Generator	PS #4 Generator Inspection and Test - Weekly		David Wilson	3/25/20	Completed
4/28/21	11491	PS 4 Generator	PS #4 Generator Inspection and Load Test - Monthly		David Wilson	4/1/20	Completed
4/28/21	11493	PS 4 Generator	PS #4 Generator Inspection and Test - Weekly		David Wilson	4/8/20	Completed
4/28/21	11494	PS 4 Generator	PS #4 Generator Inspection and Test - Weekly		David Wilson	4/15/20	Completed
4/28/21	11495	PS 4 Generator	PS #4 Generator Inspection and Test - Weekly		David Wilson	4/22/20	Completed
4/28/21	11496	PS 4 Generator	PS #4 Generator Inspection and Test - Weekly		David Wilson	4/29/20	Completed
4/28/21	11186	PS 4 Generator	PS #4 Generator Inspection and Load Test - Monthly		David Wilson	2/5/20	Completed
4/28/21	11187	PS 4 Generator	PS #4 Generator Inspection and Test - Weekly		David Wilson	2/5/20	Completed

Preventative Maintenance

Status Date	WO #	Asset Name	Work Description	Work History Note	Employee	Schedule Date	Status
4/28/21	11188	PS 4 Generator	PS #4 Generator Inspection and Test - Weekly		David Wilson	2/12/20	Completed
4/28/21	11189	PS 4 Generator	PS #4 Generator Inspection and Test - Weekly		David Wilson	2/19/20	Completed
4/28/21	11190	PS 4 Generator	PS #4 Generator Inspection and Test - Weekly		David Wilson	2/26/20	Completed
4/28/21	11010	PS 4 Generator	PS #4 Generator Inspection and Test - Weekly		David Wilson	1/1/20	Completed
4/28/21	11011	PS 4 Generator	PS #4 Generator Inspection and Test - Weekly		David Wilson	1/8/20	Completed
4/28/21	11012	PS 4 Generator	PS #4 Generator Inspection and Test - Weekly		David Wilson	1/15/20	Completed
4/28/21	11013	PS 4 Generator	PS #4 Generator Inspection and Test - Weekly		David Wilson	1/22/20	Completed
4/28/21	11014	PS 4 Generator	PS #4 Generator Inspection and Test - Weekly		David Wilson	1/29/20	Completed
4/28/21	11015	PS 4 Generator	PS #4 Generator Inspection and Load Test - Monthly		David Wilson	1/1/20	Completed
4/28/21	11022	PS 9 Generator	PS #9 Generator Inspection and Load Test - Monthly		David Wilson	1/1/20	Completed
4/28/21	11023	PS 9 Generator	PS #9 Generator Inspection and Test - Weekly		David Wilson	1/1/20	Completed
4/28/21	11024	PS 9 Generator	PS #9 Generator Inspection and Test - Weekly		David Wilson	1/8/20	Completed
4/28/21	11025	PS 9 Generator	PS #9 Generator Inspection and Test - Weekly		David Wilson	1/15/20	Completed
4/28/21	11026	PS 9 Generator	PS #9 Generator Inspection and Test - Weekly		David Wilson	1/22/20	Completed
4/28/21	11027	PS 9 Generator	PS #9 Generator Inspection and Test - Weekly		David Wilson	1/29/20	Completed
4/28/21	11196	PS 9 Generator	PS #9 Generator Inspection and Load Test - Monthly		David Wilson	2/5/20	Completed
4/28/21	11197	PS 9 Generator	PS #9 Generator Inspection and Test - Weekly		David Wilson	2/5/20	Completed
4/28/21	11198	PS 9 Generator	PS #9 Generator Inspection and Test - Weekly		David Wilson	2/12/20	Completed
4/28/21	11199	PS 9 Generator	PS #9 Generator Inspection and Test - Weekly		David Wilson	2/19/20	Completed
4/28/21	11200	PS 9 Generator	PS #9 Generator Inspection and Test - Weekly		David Wilson	2/26/20	Completed
4/28/21	11346	PS 9 Generator	PS #9 Generator Inspection and Test - Weekly		David Wilson	3/4/20	Completed
4/28/21	11348	PS 9 Generator	PS #9 Generator Inspection and Test - Weekly		David Wilson	3/18/20	Completed
4/28/21	11349	PS 9 Generator	PS #9 Generator Inspection and Test - Weekly		David Wilson	3/25/20	Completed
4/28/21	11504	PS 9 Generator	PS #9 Generator Inspection and Test - Weekly		David Wilson	4/8/20	Completed
4/28/21	11505	PS 9 Generator	PS #9 Generator Inspection and Test - Weekly		David Wilson	4/15/20	Completed
4/28/21	11506	PS 9 Generator	PS #9 Generator Inspection and Test - Weekly		David Wilson	4/22/20	Completed
4/28/21	11508	PS 9 Generator	PS #9 Generator Inspection and Load Test - Monthly		David Wilson	4/1/20	Completed
4/28/21	11028	PS 6 Generator	PS #6 Generator Inspection and Test - Weekly		David Wilson	1/1/20	Completed

Preventative Maintenance

Status Date	WO #	Asset Name	Work Description	Work History Note	Employee	Schedule Date	Status
4/28/21	11029	PS 6 Generator	PS #6 Generator Inspection and Test - Weekly		David Wilson	1/8/20	Completed
4/28/21	11030	PS 6 Generator	PS #6 Generator Inspection and Test - Weekly		David Wilson	1/15/20	Completed
4/28/21	11031	PS 6 Generator	PS #6 Generator Inspection and Test - Weekly		David Wilson	1/22/20	Completed
4/28/21	11032	PS 6 Generator	PS #6 Generator Inspection and Test - Weekly		David Wilson	1/29/20	Completed
4/28/21	11033	PS 6 Generator	PS #5 Generator Inspection and Load Test - Monthly		David Wilson	1/1/20	Completed
4/28/21	11201	PS 6 Generator	PS #6 Generator Inspection and Test - Weekly		David Wilson	2/5/20	Completed
4/28/21	11202	PS 6 Generator	PS #6 Generator Inspection and Test - Weekly		David Wilson	2/12/20	Completed
4/28/21	11203	PS 6 Generator	PS #6 Generator Inspection and Test - Weekly		David Wilson	2/19/20	Completed
4/28/21	11204	PS 6 Generator	PS #6 Generator Inspection and Test - Weekly		David Wilson	2/26/20	Completed
4/28/21	11205	PS 6 Generator	PS #5 Generator Inspection and Load Test - Monthly		David Wilson	2/5/20	Completed
4/28/21	11510	PS 6 Generator	PS #6 Generator Inspection and Test - Weekly		David Wilson	4/8/20	Completed
4/28/21	11511	PS 6 Generator	PS #6 Generator Inspection and Test - Weekly		David Wilson	4/15/20	Completed
4/28/21	11512	PS 6 Generator	PS #6 Generator Inspection and Test - Weekly		David Wilson	4/22/20	Completed
4/28/21	11513	PS 6 Generator	PS #6 Generator Inspection and Test - Weekly		David Wilson	4/29/20	Completed
4/28/21	11514	PS 6 Generator	PS #5 Generator Inspection and Load Test - Monthly		David Wilson	4/1/20	Completed
4/28/21	11351	PS 6 Generator	PS #6 Generator Inspection and Test - Weekly		David Wilson	3/4/20	Completed
4/28/21	11353	PS 6 Generator	PS #6 Generator Inspection and Test - Weekly		David Wilson	3/18/20	Completed
4/28/21	11354	PS 6 Generator	PS #6 Generator Inspection and Test - Weekly		David Wilson	3/25/20	Completed
4/28/21	11498	PS 5 Generator	PS #5 Generator Inspection and Test - Weekly		David Wilson	4/8/20	Completed
4/28/21	11499	PS 5 Generator	PS #5 Generator Inspection and Test - Weekly		David Wilson	4/15/20	Completed
4/28/21	11500	PS 5 Generator	PS #5 Generator Inspection and Test - Weekly		David Wilson	4/22/20	Completed
4/28/21	11501	PS 5 Generator	PS #5 Generator Inspection and Test - Weekly		David Wilson	4/29/20	Completed
4/28/21	11502	PS 5 Generator	PS #5 Generator Inspection and Load Test - Monthly		David Wilson	4/1/20	Completed
4/28/21	11341	PS 5 Generator	PS #5 Generator Inspection and Test - Weekly		David Wilson	3/4/20	Completed
4/28/21	11343	PS 5 Generator	PS #5 Generator Inspection and Test - Weekly		David Wilson	3/18/20	Completed
4/28/21	11344	PS 5 Generator	PS #5 Generator Inspection and Test - Weekly		David Wilson	3/25/20	Completed
4/28/21	11191	PS 5 Generator	PS #5 Generator Inspection and Test - Weekly		David Wilson	2/5/20	Completed
4/28/21	11192	PS 5 Generator	PS #5 Generator Inspection and Test - Weekly		David Wilson	2/12/20	Completed

Preventative Maintenance

Status Date	WO #	Asset Name	Work Description	Work History Note	Employee	Schedule Date	Status
4/28/21	11193	PS 5 Generator	PS #5 Generator Inspection and Test - Weekly		David Wilson	2/19/20	Completed
4/28/21	11194	PS 5 Generator	PS #5 Generator Inspection and Test - Weekly		David Wilson	2/26/20	Completed
4/28/21	11195	PS 5 Generator	PS #5 Generator Inspection and Load Test - Monthly		David Wilson	2/5/20	Completed
4/28/21	11016	PS 5 Generator	PS #5 Generator Inspection and Load Test - Monthly		David Wilson	1/1/20	Completed
4/28/21	11017	PS 5 Generator	PS #5 Generator Inspection and Test - Weekly		David Wilson	1/1/20	Completed
4/28/21	11018	PS 5 Generator	PS #5 Generator Inspection and Test - Weekly		David Wilson	1/8/20	Completed
4/28/21	11019	PS 5 Generator	PS #5 Generator Inspection and Test - Weekly		David Wilson	1/15/20	Completed
4/28/21	11020	PS 5 Generator	PS #5 Generator Inspection and Test - Weekly		David Wilson	1/22/20	Completed
4/28/21	11021	PS 5 Generator	PS #5 Generator Inspection and Test - Weekly		David Wilson	1/29/20	Completed
4/28/21	13261	PS 1 Generator	PS #1 Generator Inspection and Load Test - Monthly		David Wilson	3/3/21	Completed
4/28/21	13263	PS 1 Generator	PS #1 Generator Inspection and Test - Weekly		David Wilson	3/10/21	Completed
4/28/21	13265	PS 1 Generator	PS #1 Generator Inspection and Test - Weekly		David Wilson	3/24/21	Completed
4/28/21	13266	PS 1 Generator	PS #1 Generator Inspection and Test - Weekly		David Wilson	3/31/21	Completed
4/28/21	13415	PS 1 Generator	PS #1 Generator Inspection and Load Test - Monthly		David Wilson	4/7/21	Completed
4/28/21	13416	PS 1 Generator	PS #1 Generator Inspection and Test - Weekly		David Wilson	4/7/21	Completed
4/28/21	13418	PS 1 Generator	PS #1 Generator Inspection and Test - Weekly		David Wilson	4/21/21	Completed
4/28/21	11971	PS 1 Generator	PS #1 Generator Inspection and Load Test - Monthly		David Wilson	7/1/20	Completed
4/28/21	11972	PS 1 Generator	PS #1 Generator Inspection and Test - Weekly		David Wilson	7/1/20	Completed
4/28/21	11973	PS 1 Generator	PS #1 Generator Inspection and Test - Weekly		David Wilson	7/8/20	Completed
4/28/21	11974	PS 1 Generator	PS #1 Generator Inspection and Test - Weekly		David Wilson	7/15/20	Completed
4/28/21	11975	PS 1 Generator	PS #1 Generator Inspection and Test - Weekly		David Wilson	7/22/20	Completed
4/28/21	11976	PS 1 Generator	PS #1 Generator Inspection and Test - Weekly		David Wilson	7/29/20	Completed
4/28/21	11830	PS 1 Generator	PS #1 Generator Inspection and Load Test - Monthly		David Wilson	6/3/20	Completed
4/28/21	11831	PS 1 Generator	PS #1 Generator Inspection and Test - Weekly		David Wilson	6/3/20	Completed
4/28/21	11832	PS 1 Generator	PS #1 Generator Inspection and Test - Weekly		David Wilson	6/10/20	Completed
4/28/21	11833	PS 1 Generator	PS #1 Generator Inspection and Test - Weekly		David Wilson	6/17/20	Completed
4/28/21	11834	PS 1 Generator	PS #1 Generator Inspection and Test - Weekly		David Wilson	6/24/20	Completed
4/28/21	11659	PS 1 Generator	PS #1 Generator Inspection and Load Test - Monthly		David Wilson	5/6/20	Completed

Preventative Maintenance

Status Date	WO #	Asset Name	Work Description	Work History Note	Employee	Schedule Date	Status
4/28/21	11660	PS 1 Generator	PS #1 Generator Inspection and Test - Weekly		David Wilson	5/6/20	Completed
4/28/21	11661	PS 1 Generator	PS #1 Generator Inspection and Test - Weekly		David Wilson	5/13/20	Completed
4/28/21	11662	PS 1 Generator	PS #1 Generator Inspection and Test - Weekly		David Wilson	5/20/20	Completed
4/28/21	11663	PS 1 Generator	PS #1 Generator Inspection and Test - Weekly		David Wilson	5/27/20	Completed
4/28/21	12293	PS 1 Generator	PS #1 Generator Inspection and Load Test - Monthly		David Wilson	9/2/20	Completed
4/28/21	12295	PS 1 Generator	PS #1 Generator Inspection and Test - Weekly		David Wilson	9/9/20	Completed
4/28/21	12296	PS 1 Generator	PS #1 Generator Inspection and Test - Weekly		David Wilson	9/16/20	Completed
4/28/21	12297	PS 1 Generator	PS #1 Generator Inspection and Test - Weekly		David Wilson	9/23/20	Completed
4/28/21	12298	PS 1 Generator	PS #1 Generator Inspection and Test - Weekly		David Wilson	9/30/20	Completed
4/28/21	12449	PS 1 Generator	PS #1 Generator Inspection and Load Test - Monthly		David Wilson	10/7/20	Completed
4/28/21	12450	PS 1 Generator	PS #1 Generator Inspection and Test - Weekly		David Wilson	10/7/20	Completed
4/28/21	12451	PS 1 Generator	PS #1 Generator Inspection and Test - Weekly		David Wilson	10/14/20	Completed
4/28/21	12452	PS 1 Generator	PS #1 Generator Inspection and Test - Weekly		David Wilson	10/21/20	Completed
4/28/21	12453	PS 1 Generator	PS #1 Generator Inspection and Test - Weekly		David Wilson	10/28/20	Completed
4/28/21	12144	PS 1 Generator	PS #1 Generator Inspection and Load Test - Monthly		David Wilson	8/5/20	Completed
4/28/21	12145	PS 1 Generator	PS #1 Generator Inspection and Test - Weekly		David Wilson	8/5/20	Completed
4/28/21	12148	PS 1 Generator	PS #1 Generator Inspection and Test - Weekly		David Wilson	8/26/20	Completed
4/28/21	12149	PS 3 Generator	PS #3 Generator Inspection and Test - Weekly		David Wilson	8/5/20	Completed
4/28/21	12152	PS 3 Generator	PS #3 Generator Inspection and Test - Weekly		David Wilson	8/26/20	Completed
4/28/21	12153	PS 3 Generator	PS #3 Generator Inspection and Load Test - Monthly		David Wilson	8/5/20	Completed
4/28/21	12454	PS 3 Generator	PS #3 Generator Inspection and Test - Weekly		David Wilson	10/7/20	Completed
4/28/21	12455	PS 3 Generator	PS #3 Generator Inspection and Test - Weekly		David Wilson	10/14/20	Completed
4/28/21	12456	PS 3 Generator	PS #3 Generator Inspection and Test - Weekly		David Wilson	10/21/20	Completed
4/28/21	12457	PS 3 Generator	PS #3 Generator Inspection and Test - Weekly		David Wilson	10/28/20	Completed
4/28/21	12458	PS 3 Generator	PS #3 Generator Inspection and Load Test - Monthly		David Wilson	10/7/20	Completed
4/28/21	12299	PS 3 Generator	PS #3 Generator Inspection and Test - Weekly		David Wilson	9/2/20	Completed
4/28/21	12300	PS 3 Generator	PS #3 Generator Inspection and Test - Weekly		David Wilson	9/9/20	Completed
4/28/21	12301	PS 3 Generator	PS #3 Generator Inspection and Test - Weekly		David Wilson	9/16/20	Completed

Preventative Maintenance

Status Date	WO #	Asset Name	Work Description	Work History Note	Employee	Schedule Date	Status
4/28/21	12302	PS 3 Generator	PS #3 Generator Inspection and Test - Weekly		David Wilson	9/23/20	Completed
4/28/21	12303	PS 3 Generator	PS #3 Generator Inspection and Test - Weekly		David Wilson	9/30/20	Completed
4/28/21	12304	PS 3 Generator	PS #3 Generator Inspection and Load Test - Monthly		David Wilson	9/2/20	Completed
4/28/21	11664	PS 3 Generator	PS #3 Generator Inspection and Test - Weekly		David Wilson	5/6/20	Completed
4/28/21	11665	PS 3 Generator	PS #3 Generator Inspection and Test - Weekly		David Wilson	5/13/20	Completed
4/28/21	11666	PS 3 Generator	PS #3 Generator Inspection and Test - Weekly		David Wilson	5/20/20	Completed
4/28/21	11667	PS 3 Generator	PS #3 Generator Inspection and Test - Weekly		David Wilson	5/27/20	Completed
4/28/21	11668	PS 3 Generator	PS #3 Generator Inspection and Load Test - Monthly		David Wilson	5/6/20	Completed
4/28/21	11835	PS 3 Generator	PS #3 Generator Inspection and Test - Weekly		David Wilson	6/3/20	Completed
4/28/21	11836	PS 3 Generator	PS #3 Generator Inspection and Test - Weekly		David Wilson	6/10/20	Completed
4/28/21	11837	PS 3 Generator	PS #3 Generator Inspection and Test - Weekly		David Wilson	6/17/20	Completed
4/28/21	11838	PS 3 Generator	PS #3 Generator Inspection and Test - Weekly		David Wilson	6/24/20	Completed
4/28/21	11839	PS 3 Generator	PS #3 Generator Inspection and Load Test - Monthly		David Wilson	6/3/20	Completed
4/28/21	11977	PS 3 Generator	PS #3 Generator Inspection and Test - Weekly		David Wilson	7/1/20	Completed
4/28/21	11978	PS 3 Generator	PS #3 Generator Inspection and Test - Weekly		David Wilson	7/8/20	Completed
4/28/21	11979	PS 3 Generator	PS #3 Generator Inspection and Test - Weekly		David Wilson	7/15/20	Completed
4/28/21	11980	PS 3 Generator	PS #3 Generator Inspection and Test - Weekly		David Wilson	7/22/20	Completed
4/28/21	11981	PS 3 Generator	PS #3 Generator Inspection and Test - Weekly		David Wilson	7/29/20	Completed
4/28/21	11982	PS 3 Generator	PS #3 Generator Inspection and Load Test - Monthly		David Wilson	7/1/20	Completed
4/28/21	13420	PS 3 Generator	PS #3 Generator Inspection and Test - Weekly		David Wilson	4/7/21	Completed
4/28/21	13421	PS 3 Generator	PS #3 Generator Inspection and Test - Weekly		David Wilson	4/14/21	Completed
4/28/21	13422	PS 3 Generator	PS #3 Generator Inspection and Test - Weekly		David Wilson	4/21/21	Completed
4/28/21	13424	PS 3 Generator	PS #3 Generator Inspection and Load Test - Monthly		David Wilson	4/7/21	Completed
4/28/21	13268	PS 3 Generator	PS #3 Generator Inspection and Test - Weekly		David Wilson	3/10/21	Completed
4/28/21	13270	PS 3 Generator	PS #3 Generator Inspection and Test - Weekly		David Wilson	3/24/21	Completed
4/28/21	13271	PS 3 Generator	PS #3 Generator Inspection and Test - Weekly		David Wilson	3/31/21	Completed
4/28/21	13275	PS 4 Generator	PS #4 Generator Inspection and Test - Weekly		David Wilson	3/10/21	Completed
4/28/21	13278	PS 4 Generator	PS #4 Generator Inspection and Test - Weekly		David Wilson	3/31/21	Completed

Preventative Maintenance

Status Date	WO #	Asset Name	Work Description	Work History Note	Employee	Schedule Date	Status
4/28/21	13425	PS 4 Generator	PS #4 Generator Inspection and Load Test - Monthly		David Wilson	4/7/21	Completed
4/28/21	13426	PS 4 Generator	PS #4 Generator Inspection and Test - Weekly		David Wilson	4/7/21	Completed
4/28/21	13427	PS 4 Generator	PS #4 Generator Inspection and Test - Weekly		David Wilson	4/14/21	Completed
4/28/21	13428	PS 4 Generator	PS #4 Generator Inspection and Test - Weekly		David Wilson	4/21/21	Completed
4/28/21	13429	PS 4 Generator	PS #4 Generator Inspection and Test - Weekly		David Wilson	4/28/21	Completed
4/28/21	11983	PS 4 Generator	PS #4 Generator Inspection and Load Test - Monthly		David Wilson	7/1/20	Completed
4/28/21	11984	PS 4 Generator	PS #4 Generator Inspection and Test - Weekly		David Wilson	7/1/20	Completed
4/28/21	11985	PS 4 Generator	PS #4 Generator Inspection and Test - Weekly		David Wilson	7/8/20	Completed
4/28/21	11986	PS 4 Generator	PS #4 Generator Inspection and Test - Weekly		David Wilson	7/15/20	Completed
4/28/21	11987	PS 4 Generator	PS #4 Generator Inspection and Test - Weekly		David Wilson	7/22/20	Completed
4/28/21	11988	PS 4 Generator	PS #4 Generator Inspection and Test - Weekly		David Wilson	7/29/20	Completed
4/28/21	11840	PS 4 Generator	PS #4 Generator Inspection and Load Test - Monthly		David Wilson	6/3/20	Completed
4/28/21	11841	PS 4 Generator	PS #4 Generator Inspection and Test - Weekly		David Wilson	6/3/20	Completed
4/28/21	11842	PS 4 Generator	PS #4 Generator Inspection and Test - Weekly		David Wilson	6/10/20	Completed
4/28/21	11843	PS 4 Generator	PS #4 Generator Inspection and Test - Weekly		David Wilson	6/17/20	Completed
4/28/21	11844	PS 4 Generator	PS #4 Generator Inspection and Test - Weekly		David Wilson	6/24/20	Completed
4/28/21	11669	PS 4 Generator	PS #4 Generator Inspection and Load Test - Monthly		David Wilson	5/6/20	Completed
4/28/21	11670	PS 4 Generator	PS #4 Generator Inspection and Test - Weekly		David Wilson	5/6/20	Completed
4/28/21	11671	PS 4 Generator	PS #4 Generator Inspection and Test - Weekly		David Wilson	5/13/20	Completed
4/28/21	11672	PS 4 Generator	PS #4 Generator Inspection and Test - Weekly		David Wilson	5/20/20	Completed
4/28/21	11673	PS 4 Generator	PS #4 Generator Inspection and Test - Weekly		David Wilson	5/27/20	Completed
4/28/21	12305	PS 4 Generator	PS #4 Generator Inspection and Load Test - Monthly		David Wilson	9/2/20	Completed
4/28/21	12307	PS 4 Generator	PS #4 Generator Inspection and Test - Weekly		David Wilson	9/9/20	Completed
4/28/21	12308	PS 4 Generator	PS #4 Generator Inspection and Test - Weekly		David Wilson	9/16/20	Completed
4/28/21	12309	PS 4 Generator	PS #4 Generator Inspection and Test - Weekly		David Wilson	9/23/20	Completed
4/28/21	12310	PS 4 Generator	PS #4 Generator Inspection and Test - Weekly		David Wilson	9/30/20	Completed
4/28/21	12459	PS 4 Generator	PS #4 Generator Inspection and Load Test - Monthly		David Wilson	10/7/20	Completed
4/28/21	12460	PS 4 Generator	PS #4 Generator Inspection and Test - Weekly		David Wilson	10/7/20	Completed

Preventative Maintenance

Status Date	WO #	Asset Name	Work Description	Work History Note	Employee	Schedule Date	Status
4/28/21	12461	PS 4 Generator	PS #4 Generator Inspection and Test - Weekly		David Wilson	10/14/20	Completed
4/28/21	12462	PS 4 Generator	PS #4 Generator Inspection and Test - Weekly		David Wilson	10/21/20	Completed
4/28/21	12463	PS 4 Generator	PS #4 Generator Inspection and Test - Weekly		David Wilson	10/28/20	Completed
4/28/21	12154	PS 4 Generator	PS #4 Generator Inspection and Load Test - Monthly		David Wilson	8/5/20	Completed
4/28/21	12155	PS 4 Generator	PS #4 Generator Inspection and Test - Weekly		David Wilson	8/5/20	Completed
4/28/21	12158	PS 4 Generator	PS #4 Generator Inspection and Test - Weekly		David Wilson	8/26/20	Completed
4/28/21	12164	PS 9 Generator	PS #9 Generator Inspection and Load Test - Monthly		David Wilson	8/5/20	Completed
4/28/21	12165	PS 9 Generator	PS #9 Generator Inspection and Test - Weekly		David Wilson	8/5/20	Completed
4/28/21	12168	PS 9 Generator	PS #9 Generator Inspection and Test - Weekly		David Wilson	8/26/20	Completed
4/28/21	11850	PS 9 Generator	PS #9 Generator Inspection and Load Test - Monthly		David Wilson	6/3/20	Completed
4/28/21	11851	PS 9 Generator	PS #9 Generator Inspection and Test - Weekly		David Wilson	6/3/20	Completed
4/28/21	11852	PS 9 Generator	PS #9 Generator Inspection and Test - Weekly		David Wilson	6/10/20	Completed
4/28/21	11853	PS 9 Generator	PS #9 Generator Inspection and Test - Weekly		David Wilson	6/17/20	Completed
4/28/21	11854	PS 9 Generator	PS #9 Generator Inspection and Test - Weekly		David Wilson	6/24/20	Completed
4/28/21	11995	PS 9 Generator	PS #9 Generator Inspection and Load Test - Monthly		David Wilson	7/1/20	Completed
4/28/21	11996	PS 9 Generator	PS #9 Generator Inspection and Test - Weekly		David Wilson	7/1/20	Completed
4/28/21	11997	PS 9 Generator	PS #9 Generator Inspection and Test - Weekly		David Wilson	7/8/20	Completed
4/28/21	11998	PS 9 Generator	PS #9 Generator Inspection and Test - Weekly		David Wilson	7/15/20	Completed
4/28/21	11999	PS 9 Generator	PS #9 Generator Inspection and Test - Weekly		David Wilson	7/22/20	Completed
4/28/21	12000	PS 9 Generator	PS #9 Generator Inspection and Test - Weekly		David Wilson	7/29/20	Completed
4/28/21	11507	PS 9 Generator	PS #9 Generator Inspection and Test - Weekly		David Wilson	4/29/20	Completed
4/28/21	11679	PS 9 Generator	PS #9 Generator Inspection and Test - Weekly		David Wilson	5/6/20	Completed
4/28/21	11680	PS 9 Generator	PS #9 Generator Inspection and Test - Weekly		David Wilson	5/13/20	Completed
4/28/21	11681	PS 9 Generator	PS #9 Generator Inspection and Test - Weekly		David Wilson	5/20/20	Completed
4/28/21	11682	PS 9 Generator	PS #9 Generator Inspection and Test - Weekly		David Wilson	5/27/20	Completed
4/28/21	11683	PS 9 Generator	PS #9 Generator Inspection and Load Test - Monthly		David Wilson	5/6/20	Completed
4/28/21	12318	PS 9 Generator	PS #9 Generator Inspection and Test - Weekly		David Wilson	9/2/20	Completed
4/28/21	12319	PS 9 Generator	PS #9 Generator Inspection and Test - Weekly		David Wilson	9/9/20	Completed

Preventative Maintenance

Status Date	WO #	Asset Name	Work Description	Work History Note	Employee	Schedule Date	Status
4/28/21	12320	PS 9 Generator	PS #9 Generator Inspection and Test - Weekly		David Wilson	9/16/20	Completed
4/28/21	12321	PS 9 Generator	PS #9 Generator Inspection and Test - Weekly		David Wilson	9/23/20	Completed
4/28/21	12322	PS 9 Generator	PS #9 Generator Inspection and Test - Weekly		David Wilson	9/30/20	Completed
4/28/21	12469	PS 9 Generator	PS #9 Generator Inspection and Load Test - Monthly		David Wilson	10/7/20	Completed
4/28/21	12470	PS 9 Generator	PS #9 Generator Inspection and Test - Weekly		David Wilson	10/7/20	Completed
4/28/21	12471	PS 9 Generator	PS #9 Generator Inspection and Test - Weekly		David Wilson	10/14/20	Completed
4/28/21	12472	PS 9 Generator	PS #9 Generator Inspection and Test - Weekly		David Wilson	10/21/20	Completed
4/28/21	12473	PS 9 Generator	PS #9 Generator Inspection and Test - Weekly		David Wilson	10/28/20	Completed
4/28/21	13287	PS 9 Generator	PS #9 Generator Inspection and Test - Weekly		David Wilson	3/10/21	Completed
4/28/21	13290	PS 9 Generator	PS #9 Generator Inspection and Test - Weekly		David Wilson	3/31/21	Completed
4/28/21	13435	PS 9 Generator	PS #9 Generator Inspection and Load Test - Monthly		David Wilson	4/7/21	Completed
4/28/21	13436	PS 9 Generator	PS #9 Generator Inspection and Test - Weekly		David Wilson	4/7/21	Completed
4/28/21	13437	PS 9 Generator	PS #9 Generator Inspection and Test - Weekly		David Wilson	4/14/21	Completed
4/28/21	13438	PS 9 Generator	PS #9 Generator Inspection and Test - Weekly		David Wilson	4/21/21	Completed
4/28/21	13440	PS 6 Generator	PS #6 Generator Inspection and Test - Weekly		David Wilson	4/7/21	Completed
4/28/21	13441	PS 6 Generator	PS #6 Generator Inspection and Test - Weekly		David Wilson	4/14/21	Completed
4/28/21	13442	PS 6 Generator	PS #6 Generator Inspection and Test - Weekly		David Wilson	4/21/21	Completed
4/28/21	13443	PS 6 Generator	PS #6 Generator Inspection and Test - Weekly		David Wilson	4/28/21	Completed
4/28/21	13444	PS 6 Generator	PS #5 Generator Inspection and Load Test - Monthly		David Wilson	4/7/21	Completed
4/28/21	13291	PS 6 Generator	PS #6 Generator Inspection and Test - Weekly		David Wilson	3/3/21	Completed
4/28/21	13292	PS 6 Generator	PS #6 Generator Inspection and Test - Weekly		David Wilson	3/10/21	Completed
4/28/21	13295	PS 6 Generator	PS #6 Generator Inspection and Test - Weekly		David Wilson	3/31/21	Completed
4/28/21	12474	PS 6 Generator	PS #6 Generator Inspection and Test - Weekly		David Wilson	10/7/20	Completed
4/28/21	12475	PS 6 Generator	PS #6 Generator Inspection and Test - Weekly		David Wilson	10/14/20	Completed
4/28/21	12476	PS 6 Generator	PS #6 Generator Inspection and Test - Weekly		David Wilson	10/21/20	Completed
4/28/21	12477	PS 6 Generator	PS #6 Generator Inspection and Test - Weekly		David Wilson	10/28/20	Completed
4/28/21	12478	PS 6 Generator	PS #5 Generator Inspection and Load Test - Monthly		David Wilson	10/7/20	Completed
4/28/21	12324	PS 6 Generator	PS #6 Generator Inspection and Test - Weekly		David Wilson	9/9/20	Completed

Preventative Maintenance

Status Date	WO #	Asset Name	Work Description	Work History Note	Employee	Schedule Date	Status
4/28/21	12325	PS 6 Generator	PS #6 Generator Inspection and Test - Weekly		David Wilson	9/16/20	Completed
4/28/21	12326	PS 6 Generator	PS #6 Generator Inspection and Test - Weekly		David Wilson	9/23/20	Completed
4/28/21	12327	PS 6 Generator	PS #6 Generator Inspection and Test - Weekly		David Wilson	9/30/20	Completed
4/28/21	12328	PS 6 Generator	PS #5 Generator Inspection and Load Test - Monthly		David Wilson	9/2/20	Completed
4/28/21	11684	PS 6 Generator	PS #6 Generator Inspection and Test - Weekly		David Wilson	5/6/20	Completed
4/28/21	11685	PS 6 Generator	PS #6 Generator Inspection and Test - Weekly		David Wilson	5/13/20	Completed
4/28/21	11686	PS 6 Generator	PS #6 Generator Inspection and Test - Weekly		David Wilson	5/20/20	Completed
4/28/21	11687	PS 6 Generator	PS #6 Generator Inspection and Test - Weekly		David Wilson	5/27/20	Completed
4/28/21	11688	PS 6 Generator	PS #5 Generator Inspection and Load Test - Monthly		David Wilson	5/6/20	Completed
4/28/21	12001	PS 6 Generator	PS #6 Generator Inspection and Test - Weekly		David Wilson	7/1/20	Completed
4/28/21	12002	PS 6 Generator	PS #6 Generator Inspection and Test - Weekly		David Wilson	7/8/20	Completed
4/28/21	12003	PS 6 Generator	PS #6 Generator Inspection and Test - Weekly		David Wilson	7/15/20	Completed
4/28/21	12004	PS 6 Generator	PS #6 Generator Inspection and Test - Weekly		David Wilson	7/22/20	Completed
4/28/21	12005	PS 6 Generator	PS #6 Generator Inspection and Test - Weekly		David Wilson	7/29/20	Completed
4/28/21	12006	PS 6 Generator	PS #5 Generator Inspection and Load Test - Monthly		David Wilson	7/1/20	Completed
4/28/21	11855	PS 6 Generator	PS #6 Generator Inspection and Test - Weekly		David Wilson	6/3/20	Completed
4/28/21	11856	PS 6 Generator	PS #6 Generator Inspection and Test - Weekly		David Wilson	6/10/20	Completed
4/28/21	11857	PS 6 Generator	PS #6 Generator Inspection and Test - Weekly		David Wilson	6/17/20	Completed
4/28/21	11858	PS 6 Generator	PS #6 Generator Inspection and Test - Weekly		David Wilson	6/24/20	Completed
4/28/21	11859	PS 6 Generator	PS #5 Generator Inspection and Load Test - Monthly		David Wilson	6/3/20	Completed
4/28/21	12169	PS 6 Generator	PS #6 Generator Inspection and Test - Weekly		David Wilson	8/5/20	Completed
4/28/21	12172	PS 6 Generator	PS #6 Generator Inspection and Test - Weekly		David Wilson	8/26/20	Completed
4/28/21	12173	PS 6 Generator	PS #5 Generator Inspection and Load Test - Monthly		David Wilson	8/5/20	Completed
4/28/21	12487	PS Kholer Trailer Mounted Generator	Generator Weekly - Test Run no load		David Wilson	10/26/20	Completed
4/28/21	13129	PS Kholer Trailer Mounted Generator	Generator Weekly - Test Run no load		David Wilson	2/1/21	Completed
4/28/21	13130	PS Kholer Trailer Mounted Generator	Generator Weekly - Test Run no load		David Wilson	2/15/21	Completed
4/28/21	13132	PS Kholer Trailer Mounted Generator	Generator - Monthly Load Test		David Wilson	2/7/21	Completed

Preventative Maintenance

Status Date	WO #	Asset Name	Work Description	Work History Note	Employee	Schedule Date	Status
4/28/21	12015	PS Kholer Trailer Mounted Generator	Generator Weekly - Test Run no load		David Wilson	7/27/20	Completed
4/28/21	13280	PS 5 Generator	PS #5 Generator Inspection and Test - Weekly		David Wilson	3/10/21	Completed
4/28/21	13283	PS 5 Generator	PS #5 Generator Inspection and Test - Weekly		David Wilson	3/31/21	Completed
4/28/21	13430	PS 5 Generator	PS #5 Generator Inspection and Test - Weekly		David Wilson	4/7/21	Completed
4/28/21	13431	PS 5 Generator	PS #5 Generator Inspection and Test - Weekly		David Wilson	4/14/21	Completed
4/28/21	13432	PS 5 Generator	PS #5 Generator Inspection and Test - Weekly		David Wilson	4/21/21	Completed
4/28/21	13433	PS 5 Generator	PS #5 Generator Inspection and Test - Weekly		David Wilson	4/28/21	Completed
4/28/21	13434	PS 5 Generator	PS #5 Generator Inspection and Load Test - Monthly		David Wilson	4/7/21	Completed
4/28/21	11674	PS 5 Generator	PS #5 Generator Inspection and Test - Weekly		David Wilson	5/6/20	Completed
4/28/21	11675	PS 5 Generator	PS #5 Generator Inspection and Test - Weekly		David Wilson	5/13/20	Completed
4/28/21	11676	PS 5 Generator	PS #5 Generator Inspection and Test - Weekly		David Wilson	5/20/20	Completed
4/28/21	11677	PS 5 Generator	PS #5 Generator Inspection and Test - Weekly		David Wilson	5/27/20	Completed
4/28/21	11678	PS 5 Generator	PS #5 Generator Inspection and Load Test - Monthly		David Wilson	5/6/20	Completed
4/28/21	11845	PS 5 Generator	PS #5 Generator Inspection and Test - Weekly		David Wilson	6/3/20	Completed
4/28/21	11846	PS 5 Generator	PS #5 Generator Inspection and Test - Weekly		David Wilson	6/10/20	Completed
4/28/21	11847	PS 5 Generator	PS #5 Generator Inspection and Test - Weekly		David Wilson	6/17/20	Completed
4/28/21	11848	PS 5 Generator	PS #5 Generator Inspection and Test - Weekly		David Wilson	6/24/20	Completed
4/28/21	11849	PS 5 Generator	PS #5 Generator Inspection and Load Test - Monthly		David Wilson	6/3/20	Completed
4/28/21	11989	PS 5 Generator	PS #5 Generator Inspection and Test - Weekly		David Wilson	7/1/20	Completed
4/28/21	11990	PS 5 Generator	PS #5 Generator Inspection and Test - Weekly		David Wilson	7/8/20	Completed
4/28/21	11991	PS 5 Generator	PS #5 Generator Inspection and Test - Weekly		David Wilson	7/15/20	Completed
4/28/21	11992	PS 5 Generator	PS #5 Generator Inspection and Test - Weekly		David Wilson	7/22/20	Completed
4/28/21	11993	PS 5 Generator	PS #5 Generator Inspection and Test - Weekly		David Wilson	7/29/20	Completed
4/28/21	11994	PS 5 Generator	PS #5 Generator Inspection and Load Test - Monthly		David Wilson	7/1/20	Completed
4/28/21	12159	PS 5 Generator	PS #5 Generator Inspection and Test - Weekly		David Wilson	8/5/20	Completed
4/28/21	12162	PS 5 Generator	PS #5 Generator Inspection and Test - Weekly		David Wilson	8/26/20	Completed
4/28/21	12163	PS 5 Generator	PS #5 Generator Inspection and Load Test - Monthly		David Wilson	8/5/20	Completed
4/28/21	12464	PS 5 Generator	PS #5 Generator Inspection and Test - Weekly		David Wilson	10/7/20	Completed

Preventative Maintenance

Status Date	WO #	Asset Name	Work Description	Work History Note	Employee	Schedule Date	Status
4/28/21	12465	PS 5 Generator	PS #5 Generator Inspection and Test - Weekly		David Wilson	10/14/20	Completed
4/28/21	12466	PS 5 Generator	PS #5 Generator Inspection and Test - Weekly		David Wilson	10/21/20	Completed
4/28/21	12467	PS 5 Generator	PS #5 Generator Inspection and Test - Weekly		David Wilson	10/28/20	Completed
4/28/21	12468	PS 5 Generator	PS #5 Generator Inspection and Load Test - Monthly		David Wilson	10/7/20	Completed
4/28/21	12312	PS 5 Generator	PS #5 Generator Inspection and Test - Weekly		David Wilson	9/9/20	Completed
4/28/21	12313	PS 5 Generator	PS #5 Generator Inspection and Test - Weekly		David Wilson	9/16/20	Completed
4/28/21	12314	PS 5 Generator	PS #5 Generator Inspection and Test - Weekly		David Wilson	9/23/20	Completed
4/28/21	12315	PS 5 Generator	PS #5 Generator Inspection and Test - Weekly		David Wilson	9/30/20	Completed
4/28/21	12316	PS 5 Generator	PS #5 Generator Inspection and Load Test - Monthly		David Wilson	9/2/20	Completed
4/28/21	13419	PS 1 Generator	PS #1 Generator Inspection and Test - Weekly		David Wilson	4/28/21	Completed
4/28/21	13423	PS 3 Generator	PS #3 Generator Inspection and Test - Weekly		David Wilson	4/28/21	Completed
4/28/21	13439	PS 9 Generator	PS #9 Generator Inspection and Test - Weekly		David Wilson	4/28/21	Completed
4/28/21	13374	Generator #2 - Backup Detroit 500	Generator Weekly - Test Run no load	Heat exchangers serviced by M&S Electric and Power.	Outside Contractor	4/26/21	Completed
4/28/21	13481	Generators "All Pump Station"	Generator Weekly - Test Run no load		Eric Sutton	4/26/21	Completed
4/28/21	13452	PS Kholer Trailer Mounted Generator	Generator Weekly - Test Run no load		Eric Sutton	4/26/21	Completed
4/28/21	13662	PS Onan Trailer mounted generator	Montly operational test run			4/1/21	Completed
4/28/21	10965	Influent Pump 1	Monthly Check Pump Couplings			1/1/20	Completed
4/28/21	11107	Portable Generator - Honda	Portable Generator Inspection - Monthly			2/5/20	Completed
4/28/21	10963	Influent Sluice Isolation Gate	Weekly operate through full range			1/29/20	Completed
4/28/21	11123	Influent Sluice Isolation Gate	Weekly operate through full range			2/5/20	Completed
4/28/21	11128	Influent Pump 1	Monthly Check Pump Couplings			2/5/20	Completed
4/28/21	11129	Influent Pump 2	Monthly Check Pump Couplings			2/5/20	Completed
4/28/21	11130	Influent Pump 3	Monthly Check Pump Couplings			2/5/20	Completed
4/28/21	11296	Influent Pump 3	Monthly Check Pump Couplings			3/4/20	Completed
4/28/21	11297	Influent Pump 4	Monthly Check Pump Couplings			3/4/20	Completed
4/28/21	11131	Influent Pump 4	Monthly Check Pump Couplings			2/5/20	Completed
4/28/21	11144	RAS Pump 1	RAS Pump #1 PM - Quarterly			2/5/20	Completed
4/28/21	11145	RAS Pump 1	Monthly Check Pump Couplings			2/5/20	Completed

Preventative Maintenance

Status Date	WO #	Asset Name	Work Description	Work History Note	Employee	Schedule Date	Status
4/28/21	11146	RAS Pump 2	Monthly Check Pump Couplings			2/5/20	Completed
4/28/21	11147	RAS Pump 2	RAS Pump #2 PM - Quarterly			2/5/20	Completed
4/28/21	11148	RAS Pump 3	RAS Pump #3 PM - Quarterly			2/5/20	Completed
4/28/21	11149	RAS Pump 3	Monthly Check Pump Couplings			2/5/20	Completed
4/28/21	11151	RST Feed Pump 1	Monthly Check Pump Couplings			2/5/20	Completed
4/28/21	11152	RST Feed Pump 2	Monthly Check Pump Couplings			2/5/20	Completed
4/28/21	11156	Primary Sludge Pump 2	Monthly Check Pump Couplings			2/5/20	Completed
4/28/21	11158	Sludge Transfer Pump 1	Monthly Check Pump Couplings			2/5/20	Completed
4/28/21	11159	Sludge Transfer Pump 2	Monthly Check Pump Couplings			2/5/20	Completed
4/28/21	11206	Plant Water Pump 1	Monthly Check Pump Couplings			2/5/20	Completed
4/28/21	11207	Plant Water Pump 2	Monthly Check Pump Couplings			2/5/20	Completed
4/28/21	11210	GODWIN Portable Pump	Test Run Godwin Pump-Monthly			2/5/20	Completed
4/28/21	11155	Primary Sludge Pump 1	Monthly Check Pump Couplings			2/5/20	Completed
4/28/21	10951	Generator #2 - Backup Detroit 500	Generator Weekly - Test Run no load			1/13/20	Completed
4/28/21	11113	Generator #2 - Backup Detroit 500	Generator - Monthly Load Test			2/2/20	Completed
4/28/21	11132	Influent Pump 5	Monthly Check Pump Couplings			2/5/20	Completed
4/28/21	11236	Recirculation pump #1	Monthly Check Pump Couplings			2/5/20	Completed
4/28/21	11387	Recirculation pump #1	Monthly Check Pump Couplings			3/4/20	Completed
4/28/21	11388	Recirculation Pump #2	Monthly Check Pump Couplings			3/4/20	Completed
4/28/21	11237	Recirculation Pump #2	Monthly Check Pump Couplings			2/5/20	Completed
4/28/21	13041	Influent Sluice Isolation Gate	Weekly operate through full range			2/10/21	Completed
4/28/21	12879	Influent Pump 1	Monthly Check Pump Couplings			1/6/21	Completed
4/28/21	11292	Influent Pump 1	Monthly Check Pump Couplings			3/4/20	Completed
4/28/21	11293	Influent Pump 2	Monthly Check Pump Couplings			3/4/20	Completed
4/28/21	12262	Influent Pump 3	Influent Pump #3 PM & Inspection - SEMI ANNUAL			9/7/20	Completed
4/28/21	11301	Aeration Blower 1	Aeration Blower #1 Air Filter Inspection - monthly			3/24/20	Completed
4/28/21	11949	Aeration Blower 1	Aeration Blower #1 Air Filter Inspection - monthly			7/28/20	Completed
4/28/21	12889	Aeration Blower 1	Aeration Blower #1 Air Filter Inspection - monthly			1/26/21	Completed

Preventative Maintenance

Status Date	WO #	Asset Name	Work Description	Work History Note	Employee	Schedule Date	Status
4/28/21	12890	Aeration Blower 2	Aeration Blower #2 Air Filter Inspection - Monthly			1/28/21	Completed
4/28/21	12891	Aeration Tank 1 Oxygen Probe	AT #1 DO Probe Clean and Calibrate - Monthly			1/5/21	Completed
4/28/21	12728	Aeration Tank 1 Oxygen Probe	AT #1 DO Probe Clean and Calibrate - Monthly			12/1/20	Completed
4/28/21	12729	Aeration Tank 3 Oxygen Probe	AT #3 DO Probe Clean and Calibrate - Monthly			12/1/20	Completed
4/28/21	12892	Aeration Tank 3 Oxygen Probe	AT #3 DO Probe Clean and Calibrate - Monthly			1/5/21	Completed
4/28/21	12894	Wet Scrubber Fan	Scrubber Exhaust Fan PM - Monthly			1/13/21	Completed
4/28/21	13060	Wet Scrubber Fan	Scrubber Exhaust Fan PM - Monthly			2/10/21	Completed
4/28/21	13061	RAS Pump 1	RAS Pump #1 PM - Quarterly			2/3/21	Completed
4/28/21	13064	RAS Pump 2	RAS Pump #2 PM - Quarterly			2/3/21	Completed
4/28/21	13065	RAS Pump 3	RAS Pump #3 PM - Quarterly			2/3/21	Completed
4/28/21	12898	RST unit	RST ANNUAL SHUT DOWN			1/4/21	Completed
4/28/21	13075	Sludge Transfer Pump 1	Monthly Check Pump Couplings			2/3/21	Completed
4/28/21	13076	Sludge Transfer Pump 2	Monthly Check Pump Couplings			2/3/21	Completed
4/28/21	13079	PS 1	PUMP STATIONS - QUATERLY PM'S			2/2/21	Completed
4/28/21	13082	PS 3	PUMP STATIONS - QUATERLY PM'S			2/2/21	Completed
4/28/21	13083	PS 4	PUMP STATIONS - QUATERLY PM'S			2/2/21	Completed
4/28/21	13086	PS 5	PUMP STATIONS - QUATERLY PM'S			2/2/21	Completed
4/28/21	13087	PS 6	PUMP STATIONS - QUATERLY PM'S			2/2/21	Completed
4/28/21	13090	PS 9	PUMP STATIONS - QUATERLY PM'S			2/2/21	Completed
4/28/21	13091	PS A	PUMP STATIONS - QUATERLY PM'S			2/2/21	Completed
4/28/21	11356	Plant Water Pump 1	Monthly Check Pump Couplings			3/4/20	Completed
4/28/21	12329	Plant Water Pump 1	Monthly Check Pump Couplings			9/2/20	Completed
4/28/21	12330	Plant Water Pump 2	Monthly Check Pump Couplings			9/2/20	Completed
4/28/21	13297	Plant Water Pump 2	Monthly Check Pump Couplings			3/3/21	Completed
4/28/21	13172	Plant Water Pump 2	Monthly Check Pump Couplings			1/6/21	Completed
4/28/21	13173	Plant Water Pump 2	Monthly Check Pump Couplings			2/3/21	Completed
4/28/21	11357	Plant Water Pump 2	Monthly Check Pump Couplings			3/4/20	Completed
4/28/21	13445	Plant Water Pump 2	Monthly Check Pump Couplings			4/7/21	Completed
4/28/21	13378	Generator #1- Emergency Kohler 750	Generator Weekly - Test Run no load			4/26/21	Completed

Preventative Maintenance

Status Date	WO #	Asset Name	Work Description	Work History Note	Employee	Schedule Date	Status
4/28/21	13213	Generator #1- Emergency Kohler 750	Generator - Monthly Load Test			3/7/21	Completed
4/28/21	12870	Generator #1- Emergency Kohler 750	Generator - Monthly Load Test			1/3/21	Completed
4/28/21	13033	Generator #1- Emergency Kohler 750	Generator - Monthly Load Test			2/7/21	Completed
4/28/21	12951	PS Kholer Trailer Mounted Generator	Generator - Monthly Load Test			1/3/21	Completed
4/28/21	13306	PS Kholer Trailer Mounted Generator	Generator - Monthly Load Test			3/7/21	Completed
4/28/21	11525	Ventis MX4 #2 - 4 Gas	4 Gas Meter #2 Calibration - Monthly			4/30/20	Completed
4/28/21	12952	Ventis MX4 #2 - 4 Gas	4 Gas Meter #2 Calibration - Monthly			1/28/21	Completed
4/28/21	13134	Ventis MX4 #3 - 4 Gas	4 Gas Meter #3 Calibration - Monthly			2/25/21	Completed
4/28/21	11284	Fixed Gas Monitoring System	Quarterly Calibration Headworks room gas meters			3/4/20	Completed
4/28/21	12714	Fixed Gas Monitoring System	Quarterly Calibration Headworks room gas meters			12/2/20	Completed
4/28/21	12960	GasAlert Max XTII #2	monthly calibration			1/28/21	Completed
4/28/21	12713	Aerated Grit Chamber	Grit Chamber Cleaning - Annual			12/24/20	Completed
4/28/21	13037	Grit Screw Classifier	Grit classifier Oil Change - Annual			2/1/21	Completed
4/28/21	13038	Grit Screw Drive	Grit Screw Drive Oil Change - Annual			2/1/21	Completed
4/28/21	12416	Grit Screw Drive	Grit Screw Drive PM - Quarterly			10/9/20	Completed
4/28/21	12878	Mechanical Screen & Washpress System	Monthly Maintenance			1/4/21	Completed
4/28/21	13044	Mechanical Screen & Washpress System	Monthly Maintenance			2/1/21	Completed
4/28/21	13386	Mechanical Screen & Washpress System	Monthly Maintenance			4/5/21	Completed
4/28/21	13029	Generator #2 - Backup Detroit 500	Generator - Monthly Load Test			2/7/21	Completed
4/28/21	12405	Generator #2 - Backup Detroit 500	Generator - Monthly Load Test			10/4/20	Completed
4/28/21	11782	Generator #2 - Backup Detroit 500	Generator - Monthly Load Test			6/7/20	Completed
4/28/21	11279	Generator #2 - Backup Detroit 500	Generator Weekly - Test Run no load			3/30/20	Completed
4/28/21	12244	Generator #2 - Backup Detroit 500	Generator Weekly - Test Run no load			9/21/20	Completed
4/28/21	13374	Generator #2 - Backup Detroit 500	Generator Weekly - Test Run no load			4/26/21	Completed
4/28/21	13148	High level floats	Weekly High Float Alarm test			2/7/21	Completed
4/28/21	13151	High level floats	Weekly High Float Alarm test			2/28/21	Completed

Preventative Maintenance

Status Date	WO #	Asset Name	Work Description	Work History Note	Employee	Schedule Date	Status
4/28/21	12966	High level floats	Weekly High Float Alarm test			1/3/21	Completed
4/28/21	12967	High level floats	Weekly High Float Alarm test			1/10/21	Completed
4/28/21	12970	High level floats	Weekly High Float Alarm test			1/31/21	Completed
4/28/21	13126	GasAlert Max XTII #1	4 gas meter calibration - monthly			2/1/21	Completed
4/28/21	12945	GasAlert Max XTII #1	4 gas meter calibration - monthly			1/1/21	Completed
4/28/21	12971	Meters - 4 Gas Confined Space #2	4 gas meter calibration - monthly			1/1/21	Completed
4/28/21	13152	Meters - 4 Gas Confined Space #2	4 gas meter calibration - monthly			2/1/21	Completed
4/28/21	11300	Influent Pump 5	Monthly Check Pump Couplings			3/4/20	Completed
4/28/21	13235	Influent Pump 5	Monthly Check Pump Couplings			3/3/21	Completed
4/28/21	13170	Recirculation pump #1	Monthly Check Pump Couplings			1/6/21	Completed
4/28/21	13171	Recirculation pump #1	Monthly Check Pump Couplings			2/3/21	Completed
4/28/21	13327	Recirculation pump #1	Monthly Check Pump Couplings			3/3/21	Completed
4/28/21	12358	Recirculation pump #1	Monthly Check Pump Couplings			9/2/20	Completed
4/28/21	12359	Recirculation Pump #2	Monthly Check Pump Couplings			9/2/20	Completed
4/28/21	11893	Recirculation Pump #2	Monthly Check Pump Couplings			6/3/20	Completed
4/28/21	12978	Generators "All Pump Station"	Generator - Monthly Load Test			1/3/21	Completed
4/28/21	12979	All Plant Gear box reducers	GEAR BOX MAINT - WEEKLY			1/3/21	Completed
4/28/21	12980	All Plant Gear box reducers	GEAR BOX MAINT - WEEKLY			1/10/21	Completed
4/28/21	12981	All Plant Gear box reducers	GEAR BOX MAINT - WEEKLY			1/17/21	Completed
4/28/21	12982	All Plant Gear box reducers	GEAR BOX MAINT - WEEKLY			1/24/21	Completed
4/28/21	12983	All Plant Gear box reducers	GEAR BOX MAINT - WEEKLY			1/31/21	Completed
4/28/21	13160	All Plant Gear box reducers	GEAR BOX MAINT - WEEKLY			2/7/21	Completed
4/28/21	13078	Waste Activated Sludge Pump 3	Vaughan Centrifugal pump - Semi Annual			2/18/21	Completed
4/28/21	11160	Sludge Storage Tank 2	Sludge Holding Tank #2 Cleaning - Annual			2/5/20	Completed
4/28/21	12946	GODWIN Portable Pump	Test Run Godwin Pump-Monthly			1/6/21	Completed
4/28/21	13127	GODWIN Portable Pump	Test Run Godwin Pump-Monthly			2/3/21	Completed
4/28/21	13300	GODWIN Portable Pump	Test Run Godwin Pump-Monthly			3/3/21	Completed
4/29/21	13385	Influent Sluice Isolation Gate	Weekly operate through full range	Exercised influent gate through tight spots to closed position then open from SCADA.	David Wilson	4/28/21	Completed

Preventative Maintenance

Status Date	WO #	Asset Name	Work Description	Work History Note	Employee	Schedule Date	Status
4/29/21	13393	Aeration Blower 1	Aeration Blower #1 Air Filter Inspection - monthly	Inspected air filter assembly. Clean due to blower offline.	David Wilson	4/27/21	Completed
4/30/21	13636	Meters - 4 Gas Confined Space #2	4 gas meter calibration - monthly		Paul Horigan	5/1/21	Completed
4/30/21	13464	GasAlert Max XTII #2	monthly calibration	Zeroed and calibrated four gas meter. No issues found.	Paul Horigan	4/29/21	Completed
4/30/21	13604	GasAlert Max XTII #1	4 gas meter calibration - monthly		Paul Horigan	5/1/21	Completed
4/30/21	13454	Ventis MX4 #2 - 4 Gas	4 Gas Meter #2 Calibration - Monthly	Zeroed and calibrated four gas meter. No issues found.	Paul Horigan	4/29/21	Completed
4/30/21	13455	Ventis MX4 #3 - 4 Gas	4 Gas Meter #3 Calibration - Monthly	Zeroed and calibrated four gas meter. No issues found.	Paul Horigan	4/29/21	Completed
4/30/21	13456	Ventis MX4 #4 - 4 Gas	4 Gas Meter #4 Calibration - Monthly	Zeroed and calibrated four gas meter. No issues found.	Paul Horigan	4/29/21	Completed
4/30/21	13457	Ventis MX4 #5 - 4 Gas	4 Gas Meter #5 Calibration - Monthly	Zeroed and calibrated four gas meter. No issues found.	Paul Horigan	4/29/21	Completed
4/30/21	13458	Ventis MX4 #6 - 4 Gas	4 Gas Meter #6 Calibration - Monthly	Zeroed and calibrated four gas meter. No issues found.	Paul Horigan	4/29/21	Completed

Status Date	WO #	Asset Name	Work Description	Work History Note	Employee	Schedule Date	Status
4/12/21	13369	Eyewash Stations	All Portable Eye wash stations - semi annual		David Wilson	4/1/21	Completed

Administrative

Status Date	WO #	Asset Name	Work Description	Work History Note	Employee	Schedule Date	Status
4/21/21	13623	effluent flow meter	Calibration	New Siemens mag meter on line 4/21. RE Ericksen in to program and test and cal unit.	Outside Contractor	5/1/21	Completed
4/28/21	11710	effluent flow meter	Calibration	Effluent Mag meter replaced and calibration verified with installation.	David Wilson	5/1/20	Completed
4/28/21	4400	effluent flow meter	Calibration	Effluent Mag meter replaced and calibration verified with installation.	David Wilson	5/1/17	Completed
4/28/21	6814	effluent flow meter	Calibration	Effluent Mag meter replaced and calibration verified with installation.	David Wilson	5/1/18	Completed
4/28/21	11248	30 - WW Treatment Plant - General	Weekly - Eric close out WO's			2/1/20	Completed
4/28/21	11269	30 - WW Treatment Plant - General	Weekly - Eric close out WO's			3/1/20	Completed

Date	Asset ID	Asset Description	Asset Class
4/9/2021 10:08	03-108	12 CREST RD	Hull Parcels
4/23/2021 9:00	06-068	107 SPRING ST	Hull Parcels
4/21/2021 9:23	10-006	0 PT ALLERTON AVE	Hull Parcels
4/21/2021 9:31	10023	Sewer 6" VC Pipe on MAIN ST.	Hull Sewer Main
4/30/2021 10:27	11-066	4 STANDISH AVE	Hull Parcels
4/26/2021 8:58	13-001	335 BEACH AVE	Hull Parcels
4/21/2021 9:26	14-026	66 CADISH AVE	Hull Parcels
4/5/2021 14:24	15-170	32 O STREET	Hull Parcels
4/2/2021 9:45	15-174	23 O STREET	Hull Parcels
4/2/2021 10:16	19-105	179 SAMOSET AVE	Hull Parcels
4/22/2021 14:10	19-105	179 SAMOSET AVE	Hull Parcels
4/28/2021 13:31	19-105	179 SAMOSET AVE	Hull Parcels
4/21/2021 10:29	22-015	274 NEWPORT RD	Hull Parcels
4/22/2021 10:38	22-131	330 NEWPORT RD	Hull Parcels
4/22/2021 10:43	26-085	24 RUSSELL ST	Hull Parcels
4/12/2021 13:24	29-109	50 C WHITEHEAD AVE	Hull Parcels
4/14/2021 14:34	29-109	50 C WHITEHEAD AVE	Hull Parcels
4/9/2021 13:37	33-049	132 BAY STREET	Hull Parcels
4/9/2021 13:40	33-115	128 BAY STREET	Hull Parcels
4/21/2021 10:45	33-115	128 BAY STREET	Hull Parcels
4/15/2021 13:02	35-013	15 MARGINAL RD	Hull Parcels
4/9/2021 13:43	35-031	109 BAY STREET	Hull Parcels
4/9/2021 13:42	35-047	15 ISLAND VIEW RD	Hull Parcels
4/9/2021 13:44	35-064	12 FAIRMOUNT WAY	Hull Parcels
4/9/2021 13:46	35-072	20 ROOSEVELT AVE	Hull Parcels
4/9/2021 13:48	35-083	18 ROOSEVELT AVE	Hull Parcels
4/9/2021 13:49	35-098	17 ROOSEVELT AVE	Hull Parcels
4/15/2021 13:05	37-008	213 NANTASKET AVE	Hull Parcels
4/22/2021 13:55	38-048	15 PARK AVE	Hull Parcels
4/2/2021 13:41	39-128	10 ROCKVIEW RD	Hull Parcels
4/29/2021 14:59	39-157	36 ROCKLAND HOUSE RD	Hull Parcels
4/15/2021 11:14	49-078	248 ATLANTIC AVE	Hull Parcels
4/2/2021 11:46	53-017	123 ATLANTIC AVE	Hull Parcels
4/21/2021 10:52	53-049	96 ATLANTIC AVE	Hull Parcels
4/30/2021 10:35	56-030	55 HARBOR VIEW RD	Hull Parcels
4/6/2021 14:31	73 Park Ave	73 Park Ave Grinder Pump	Hull Grinder Pumps
4/14/2021 14:11	Bacteria UNIT #21	UNIT #21	Hull In Pipe Bacteria Unit
4/27/2021 14:38	Bacteria UNIT #21	UNIT #21	Hull In Pipe Bacteria Unit

4/14/2021 14:23	Bateria UNIT #22	UNIT #22	Hull In Pipe Bateria Unit
4/13/2021 15:11	Bateria UNIT # 8	UNIT # 8	Hull In Pipe Bateria Unit
4/13/2021 15:00	Bateria UNIT #1	UNIT #1	Hull In Pipe Bateria Unit
4/13/2021 15:13	Bateria UNIT #10	UNIT #10	Hull In Pipe Bateria Unit
4/14/2021 14:08	Bateria UNIT #11	UNIT #11	Hull In Pipe Bateria Unit
4/14/2021 14:15	Bateria UNIT #12	UNIT #12	Hull In Pipe Bateria Unit
4/14/2021 14:13	Bateria UNIT #13	UNIT #13	Hull In Pipe Bateria Unit
4/14/2021 14:12	Bateria UNIT #14	UNIT #14	Hull In Pipe Bateria Unit
4/14/2021 14:11	Bateria UNIT #15	UNIT #15	Hull In Pipe Bateria Unit
4/14/2021 14:10	Bateria UNIT #16	UNIT #16	Hull In Pipe Bateria Unit
4/13/2021 15:15	Bateria UNIT #17	UNIT #17	Hull In Pipe Bateria Unit
4/14/2021 14:24	Bateria UNIT #18	UNIT #18	Hull In Pipe Bateria Unit
4/14/2021 14:08	Bateria UNIT #19	UNIT #19	Hull In Pipe Bateria Unit
4/13/2021 15:03	Bateria UNIT #2	UNIT #2	Hull In Pipe Bateria Unit
4/14/2021 14:09	Bateria UNIT #20	UNIT #20	Hull In Pipe Bateria Unit
4/14/2021 14:16	Bateria UNIT #23	UNIT #23	Hull In Pipe Bateria Unit
4/13/2021 15:01	Bateria UNIT #24	UNIT #24	Hull In Pipe Bateria Unit
4/14/2021 13:53	Bateria UNIT #3	UNIT #3	Hull In Pipe Bateria Unit
4/27/2021 14:37	Bateria UNIT #3	UNIT #3	Hull In Pipe Bateria Unit
4/13/2021 15:02	Bateria UNIT #4	UNIT #4	Hull In Pipe Bateria Unit
4/27/2021 14:37	Bateria UNIT #4	UNIT #4	Hull In Pipe Bateria Unit
4/13/2021 15:08	Bateria UNIT #5	UNIT #5	Hull In Pipe Bateria Unit

4/13/2021 15:05	Bateria UNIT #6	UNIT #6	Hull In Pipe Bacteria Unit
4/13/2021 15:10	Bateria UNIT #7	UNIT #7	Hull In Pipe Bacteria Unit
4/14/2021 14:26	Bateria UNIT #9	UNIT #9	Hull In Pipe Bacteria Unit
4/6/2021 12:32	MH-20154	MH-20154	Sanitary Manhole
4/2/2021 14:45	MH-20568A-1	MH-20568A-1	Sanitary Manhole
4/2/2021 14:39	MH-20656-1	MH-20656-1	Sanitary Manhole

Name	Workflow Class	View
Sutton, Eric	Hull - Markout	View
Sutton, Eric	Hull - Markout	View
Sutton, Eric	Hull - Markout	View
Sutton, Eric	Sewer Main Cleaning & CCTV	View
Sutton, Eric	Hull - Markout	View
Sutton, Eric	Hull - Markout	View
Sutton, Eric	Hull - Markout	View
Sutton, Eric	Hull - Markout	View
Sutton, Eric	Hull - Markout	View
Sutton, Eric	Hull - Markout	View
Sutton, Eric	Hull - Markout	View
Sutton, Eric	Hull - Markout	View
Sutton, Eric	Hull - Markout	View
Sutton, Eric	Hull - Markout	View
Boornazian, Bill	Hull - Sewer Backup	View
Sutton, Eric	Hull - Sewer Backup	View
Sutton, Eric	Hull - Markout	View
Sutton, Eric	Hull - Markout	View
Sutton, Eric	Hull - Markout	View
Sutton, Eric	Hull - Markout	View
Sutton, Eric	Hull - Markout	View
Sutton, Eric	Hull - Markout	View
Sutton, Eric	Hull - Markout	View
Sutton, Eric	Hull - Markout	View
Sutton, Eric	Hull - Markout	View
Sutton, Eric	Hull - Markout	View
Sutton, Eric	Hull - Markout	View
Boornazian, Bill	Generic WO	View
Sutton, Eric	Hull - Markout	View
Sutton, Eric	Hull - Markout	View
Sutton, Eric	Hull - Markout	View
Sutton, Eric	Hull - Markout	View
Sutton, Eric	Hull - Markout	View
Sutton, Eric	Generic WO	View
Sutton, Eric	Hull - In Pipe Bacteria Units	View
Sutton, Eric	Hull - In Pipe Bacteria Units	View

[illegible]

Sutton, Eric	Hull - In Pipe Bacteria Units	View
Sutton, Eric	Hull - In Pipe Bacteria Units	View
Sutton, Eric	Hull - In Pipe Bacteria Units	View
Sutton, Eric	Generic WO	View
Sutton, Eric	MH Frame & Cover Inspection	View
Sutton, Eric	MH Frame & Cover Inspection	View