

Town of Hull Emergency Preparedness January 25, 2018



CHIEF CHRIS RUSSO
DEPUTY CHIEF WILLIAM FRAZIER III



Winter Storm 2018



- **Bombogenesis**
- **Communications**
- **Staffing**
- **Response**
- **Challenges**
- **Sheltering**
- **State & Federal Assets**
- **Lessons Learned**

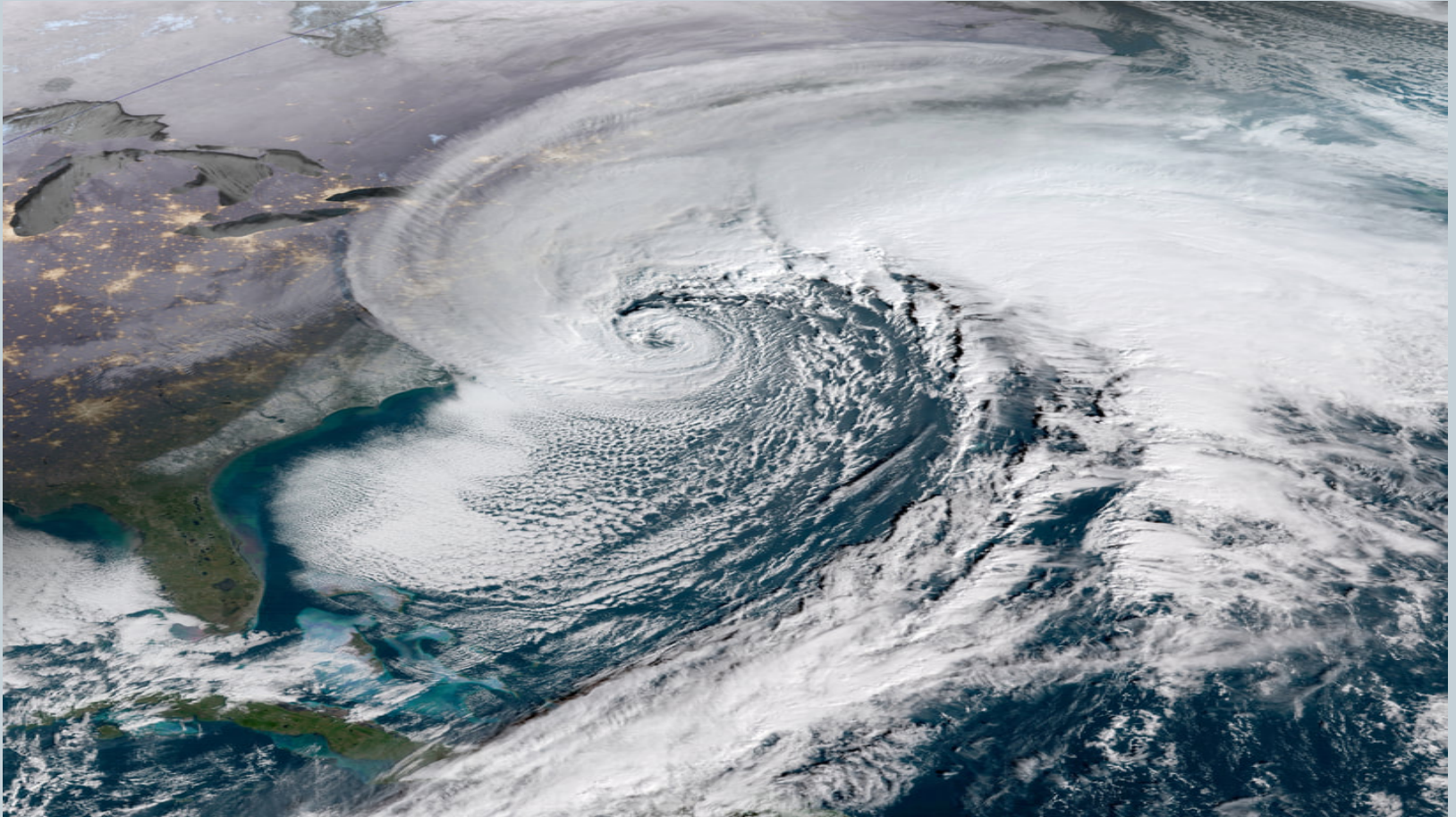
BOMBOGENESIS



- **Bombogenesis**
 - popular term used by meteorologists
 - occurs when a midlatitude cyclone rapidly intensifies
 - dropping at least 24 millibars over 24 hours
 - A millibar measures atmospheric pressure

This can happen when a cold air mass collides with a warm air mass, such as air over warm ocean waters. The formation of this rapidly strengthening weather system is a process called bombogenesis, which can result in what is known as a “bomb cyclone”.

BOMBOGENESIS



Storm Surge Dangers



OPERATIONAL HAZARDS



Risks We Face



- Hull faces risks from a variety of natural & manmade hazards that could result in an emergency or disaster situation.
- Regardless of the type of emergency, we recommend taking an “all hazards” approach to being prepared
 - Be informed about potential hazards
 - Create a communication plan
 - Making a Shelter-In-Place kit and a “Go-Bag”

COMMUNICATIONS



- Pre-Storm Meeting
- Early and Often Weather Updates
- Social Media-FB/Twitter
- Local Cable
- Town Websites
- Digital Message Boards
- Code Red

STAFFING



- **Town-Wide Agencies/Departments**
 - Emergency management
 - Fire
 - Police
 - Hull Light
 - DPW
- **Outside Resources**
 - National Guard
 - Red Cross
 - NGrid

RESPONSE



- **Logistics**
 - Fuel for vehicles
 - Fuel for personnel
 - Apparatus Management
- **Pre-Storm Staging**
 - Positioning of assets
- **Warming Center/Shelter**
 - Memorial school
 - Weymouth High School
- **Calls for Service**
 - Storm related
 - Non storm related

Challenges



STATE AND FEDERAL ASSETS



DECLARED EVENTS



- **MEMA-MASS EMERGENCY MANAGEMENT AGENCY**
- **FEMA- FEDERAL EMERGENCY MANAGEMENT AGENCY**
- **Declared Disaster**
- **State of Emergency**

Lessons Learned



- **Town-wide flooding and low lying areas**
 - New areas of concern were brought to light with the most recent storm
- **Storm Surge**
 - High tides in combination with atmospheric pressure drop
- **High Water Vehicles**
 - **ABSOLUTLEY VITAL** to operations during these types of storms
- **Restrict Access to Town**
- **Shelter Considerations**
 - Warming center
 - Transportation to regional shelters

Why You Should Prepare for an Emergency



- The Town of Hull has plans in place to protect public health & safety
- But taking responsibility for yourself & your family in the first days of an emergency is the duty of every citizen
- No one knows the needs of you and your family like you do
 - Abilities, limitations, and personal needs
- Being prepared may help save your life or the life of a loved one.

Shelter in Place



- **Shelter-in-place**
 - Make your home a safe haven
 - Write down your plan
- **You and your family are secure and self-sufficient during a town-wide emergency**
 - when officials or Mother Nature require you to stay in your home
 - Extreme weather like the recent flooding.

Emergency Prep. Checklist



Have 2 emergency kits

- *1 for shelter in place*
 - Supplies for 3 days
- *1 go bag for evacuation*
 - Easy carry kit to go
- Store both in safe dry area of house

Marginal Rd. rescue



Communication plan



For you and your family

- Meeting spots
- Temporary housing
- Phone numbers
- Paper copies in water proof bag
 - Write it all down and keep it in a safe dry place

Media on site



Shelter in Place

Food/water

- Water 1 gal p/p per day x3
- Juice boxes/canned drinks
- Food 3 days, dry, canned, non cooking, ready to eat meals.
- Sterno cans, lighters
- Grill or camp stove. outside

other items



MEDICINE/FIRST AID/HEALTH



- EXTRA PRESCRIPTION MEDICATIONS
- SPECIAL NEEDS INSTRUCTIONS
- EXTRA EYEGLASSES
- 2 FIRST AID KITS
- SOAP AND HAIR CARE
- TP/PT
- DENTAL HYGIENE
- RAZORS
- PERSONAL CARE ITEMS
- TRASH BAGS



Heat source



Fireplace

- Extra wood logs
- Matches
- Generator
- Blankets and sleeping bags

Fire Prevention

- Smoke detectors
- Carbon Monoxide detectors
- Fire extinguishers
- Escape plan

Important items



Flash lights

- Flash lights, lamps & Glo sticks
- Weather NOAA Radio (Battery-powered) Clock or watch (Battery-powered) Power: Extra batteries, solar power or crank power
- Battery pack charger
- Cell phone charger: Wall, car & USB
- Find and Mark utility shut-offs with bright paint
- Wrench or pliers to shut off utilities if needed
- Tools & supplies to secure your home
- Duct Tape Bleach & Peroxide Protective clothing
- Whistle (to call for help)
- Non-Electric entertainment: Cards & board games

Documents(waterproof bag)

- Birth Certificate & Social Security Card
- Passport
- Money: Cash & credit cards
- Bank & insurance information
- Family & doctor's phone numbers (paper copies)
- Medical information
- Inventory of valuable household items
- Extra Keys: car & home

Children/Seniors



Children

- Baby food & drink (3 day supply, non-perishable)
- Diapers, wipes & trash bags Medication & instructions
- Doctor's telephone number
- Rescue sticker Non-electric toys

Seniors

- Contact information for your support network Special needs instructions Back-up medications & instructions

Pets



Essentials

- Food, Water (3 day supply) and Bowls
- Manual can opener
- Identify a person to get your pet if you are not home
- Medications Emergency contact numbers (vet, shelters, etc.)

Additional Items

- Copies of Vaccinations (ie: rabies)
- Photos of you with your pet (to prove ownership)
- Litter, litter box & trash bags
- Collar with tags, leash, carrying case & toys

Go Bag



Easy to carry duffle bag/backpack

- Money: Cash & credit cards
Phone numbers & addresses (paper copy) Cell phone charger: Wall, car & USB
- Seasonal clothing (cold or warm) with sturdy shoes
- Documentation: Driver's license & passport

Additional Items

- Food & Water Medications & personal hygiene items
- First aid kit Flashlight & watch (with extra batteries)
- Maps with escape routes from your area marked
- Extra keys

Be prepared



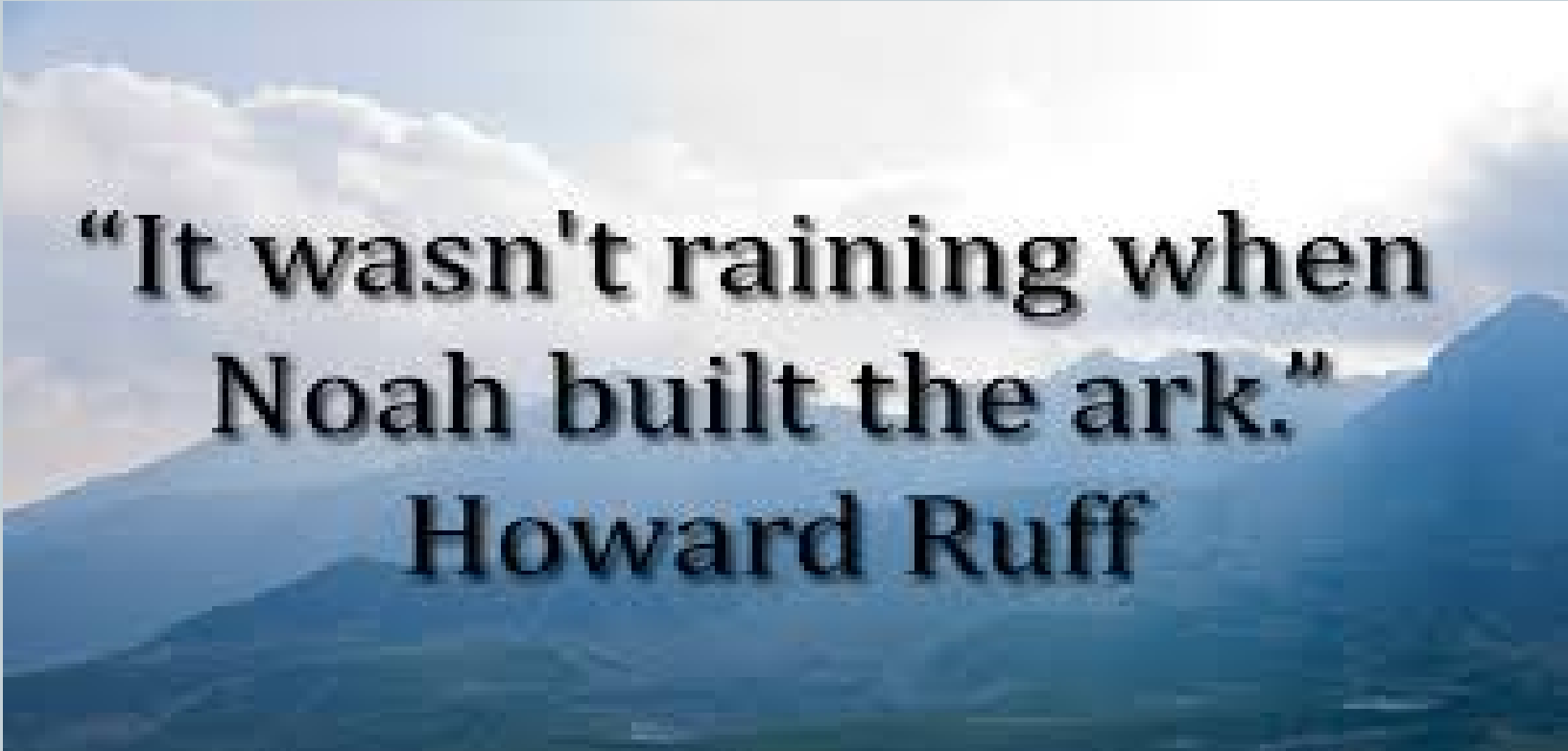
Vehicle preparedness

- Full tank of gas
- Gas can: Full Extra car battery
- Jumper cables
- Tire inflators

Annual Kit Check

- Once a year, check to make sure no items in your kit have expired or become damaged (ie, food, water, batteries, medicine, contact information).

Thank You/Questions

The background of the text area is a photograph of a vast mountain range. The mountains are covered in green vegetation and are partially shrouded in mist or low clouds. The sky above is filled with large, white, fluffy clouds, with some sunlight breaking through near the horizon, creating a soft glow.

**“It wasn't raining when
Noah built the ark.”
Howard Ruff**