

Understanding Your PSAT/NMSQT Results

4 Major Parts of Your PSAT/NMSQT Results

The screenshot shows a student's PSAT/NMSQT score report. At the top, it displays the student's name (STUDENT, M.A.B.), year (2011), grade (11), school code (123456), and optional code (00). Below this, there are three score ranges for Reading, Writing, and Math. The main body of the report is divided into sections: 'Your Scores', 'Your Skills', 'Your Answers', and 'Next Steps'. The 'Next Steps' section includes a table of skills and their performance:

Organization & Ideas	Data, Statistics & Probability	Correctly Formed Sentences
2 of 8 questions correct (2 omitted)	6 of 8 questions correct (1 omitted)	1 of 6 questions correct (4 omitted)
Understanding Literary Elements	Get suggestions for improving your skills before you take the SAT.	Relationships of Sentences & Paragraphs

Below the table, there are three sections for 'Critical Reading', 'Mathematics', and 'Writing Skills', each with a grid of question numbers and their status (e.g., 1 A, 2 B, 3 C, 4 D, 5 M). At the bottom, there is a 'Next Steps' section with a call to action to visit www.collegeboard.org/quickstart and sign in using the code A#2670146P.

3 Test Sections

Critical Reading

Mathematics

Writing Skills

Your Scores

Score

You can see your projected SAT score online in My College QuickStart (www.collegeboard.org/quickstart).

Score Range


Percentile

If you are a junior, your scores are compared to those of other juniors.


If you are a sophomore or younger student, your scores are compared to those of sophomores.

Name: **STUDENT, MAB** Year: **2011** Grade: **11** School Code: **123456** Optional Code: **00** Student Copy


Critical Reading



50



20 ————— 80
46 to 54



You scored higher than **55%** of juniors.

Question	Correct Answer	Your Answer
1	C	✓
2	B	✓
3	D	✓
4	D	✓
5	D	✓
6	D	✓
7	B	✓
8	D	✓
9	D	✓
10	B	✓
11	D	✓
12	C	✓
13	A	✓
14	B	✓
15	A	✓
16	C	✓
17	A	✓
18	B	✓
19	B	✓
20	B	✓
21	E	✓
22	D	✓
23	E	✓
24	A	✓
25	C	✓
26	C	✓
27	C	✓
28	C	✓
29	A	✓
30	B	✓
31	A	✓
32	B	✓
33	B	✓
34	A	✓
35	A	✓
36	C	✓
37	C	✓
38	C	✓
39	C	✓
40	C	✓
41	C	✓
42	C	✓
43	C	✓
44	C	✓
45	C	✓
46	C	✓
47	C	✓
48	C	✓
49	C	✓
50	C	✓

Key:
 ✓ Correct ✗ Incorrect
 ○ Unselectable ◐ Incomplete
 ◑ Unavailable ◒ Hard

Scoring:
 • Correct answer = PLUS 1 POINT
 • Deleted answers = 0 POINTS
 • Wrong answers to multiple-choice questions = MINUS 1/4 POINT
 • Wrong answers to math questions = 25-50 = NO POINTS
 • Points are totaled, then converted to score on the 20-80 scale.

Next Steps
 Go online to see your projected SAT scores, learn how to improve them, and find critical college and career planning information.

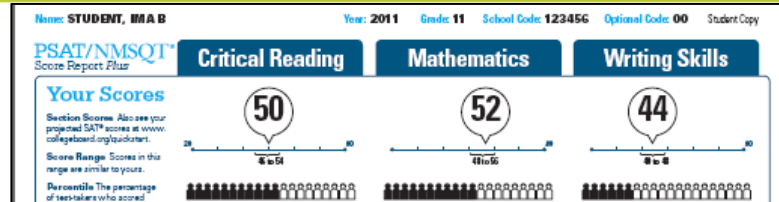
On test day, you told us that you're interested in **Sport & Fitness Administration**.
 To learn more about college majors, visit My College QuickStart™. There you can also:
 • Search for colleges.
 • Take a personality test.

Take the next step today! Go to www.collegeboard.org/quickstart and sign in using your code below.

Online Access Code
A#2670146P

Find out why you missed questions.
www.collegeboard.com/quickstart

National Merit Scholarship Corporation Information



National Merit Scholarship Corporation

National Merit Scholarship Corporation (NMSC) uses a Selection Index based on PSAT/NMSQT® scores as an initial screen of over 1.5 million students who enter its scholarship programs. (See reverse for more information.)

Your Selection Index

Sum of scores in critical reading, mathematics and writing skills.
146

Percentile

Compares your performance with college-bound juniors.
47

Entry Requirements

(Information you provided on your answer sheet.)

High school student: **Yes** U. S. citizenship: **Yes**

Year to complete high school and enroll full-time in college: **2013**

Years to be spent in grades 9–12: **4**

Eligibility Information

If your Selection Index places you among the 55,000 high scorers who qualify for program recognition, you will be notified next September.

The Selection Index is the sum of your critical reading, mathematics and writing skills scores.

If it has an asterisk, you do not meet all of the eligibility requirements for the competition.

The Percentile compares your performance to that of other college-bound juniors.

The Entry Requirements section displays information you provided on your answer sheet.

Online Access Guide

My College LuckStart™: Here you can also:

- Learn about related careers
- Search for colleges
- Take a personality test

Online Access Code: **A#267014CP**

Take the next step today! Go to www.collegeboard.org/quickstart and sign in using your code below.

Find out why you missed questions. www.collegeboard.com/sat/quickstart

Your Skills

Name: STUDENT, IMA B Year: 2011 Grade: 11 School Code: 123456 Optional Code: 00 Student Copy

PSAT/NMSQT[®] Score Report Plus

Critical Reading **Mathematics** **Writing Skills**

Your Scores

Section Scores Also see your projected SAT[®] scores at www.collegeboard.org/quickstart.

50 52 44

Your Skills

These skill categories can help you understand your score and focus your study efforts before you take the SAT.

To learn more about your skills and review suggestions for improvement based on your test performance, visit www.collegeboard.com/quickstart and sign in using your code below.

Online Access Code
A02670146P

Determining the Meaning of Words

9 of 15 questions correct (0 omitted)

Author's Craft: Style, Tone & Technique

3 of 5 questions correct (0 omitted)

Reasoning & Inference

8 of 10 questions correct (2 omitted)

Organization & Ideas

2 of 8 questions correct (2 omitted)

Understanding Literary Elements

4 of 10 questions correct (0 omitted)

Number & Operations

12 of 15 questions correct (1 omitted)

Algebra & Functions

5 of 5 questions correct (0 omitted)

Geometry & Measurement

8 of 10 questions correct (2 omitted)

Data, Statistics & Probability

6 of 8 questions correct (1 omitted)

Get suggestions for improving your skills before you take the SAT.
www.collegeboard.com/quickstart

Grammatical Relationships between Words

3 of 12 questions correct (1 omitted)

Words & Phrases Used to Modify or Compare

1 of 5 questions correct (2 omitted)

Phrases & Clauses

6 of 10 questions correct (2 omitted)

Correctly Formed Sentences

1 of 6 questions correct (4 omitted)

Relationships of Sentences & Paragraphs

2 of 6 questions correct (3 omitted)

See how you did on each skill. The same skills are tested on the SAT.

You can try hundreds of practice questions, organized by skill, online in My College QuickStart (www.collegeboard.org/quickstart).

Find out why you missed questions.
www.collegeboard.com/quickstart

Next Steps

Go online to see your projected SAT scores, learn how to improve them, and find critical college and career planning information.

On test day, you told us that you're interested in **Sport & Fitness Administration**! To learn more about college majors, visit My College QuickStart[™]. There you can also:

- Search for colleges
- Take a personality test

Take the next step today! Go to www.collegeboard.org/quickstart and sign in using your code below.

Online Access Code
A02670146P

Your Answers

You will get your test book back with your PSAT/NMSQT results, so that you can review the questions.

You can also review each test question in My College QuickStart.

Name: STUDENT, IMA B Year: 2011 Grade: 11 School Code: 123456 Optional Code: 00 Student Copy

PSAT/NMSQT Score Report Plus

Critical Reading

Mathematics

Writing Skills

52

44

You scored higher than 57% of juniors. You scored higher than 39% of juniors.

Eligibility Information: If your Selection Index places you among the 55,000 high scorers who qualify for program recognition, you will be notified next September.

Number & Operations: 2 of 16 questions correct (1 omitted)

Algebra & Functions: 0 of 5 questions correct (0 omitted)

Geometry & Trigonometry: 0 of 14 questions correct (2 omitted)

Probability, Statistics & Probability: 0 of 8 questions correct (1 omitted)

Geometrical Relationships between Words: 3 of 12 questions correct (1 omitted)

Words & Phrases Used to Modify or Compare: 1 of 5 questions correct (2 omitted)

Phrases & Clauses: 6 of 10 questions correct (2 omitted)

Correctly Formed Sentences: 1 of 6 questions correct (4 omitted)

Relationships of Sentences & Paragraphs: 2 of 6 questions correct (3 omitted)

Get suggestions for improving your skills before you take the SAT. www.collegeboard.org/quickstart

Question	Correct Answer	Your Answer	Difficulty
1	A	✓	e
2	B	✓	e
3	A	C	m
4	C	A	h
5	B	E	h
6	D	✓	e
7	B	✓	m
8	D	o	e
9	B	✓	m
10	E	B	h
11	D	✓	h
12	C	✓	m
13	A	✓	m
14	B	A	m
15	A	✓	e
16	C	✓	m
17	A	✓	e
18	E	✓	m
19	B	✓	m
20	B	E	m
21	E	✓	m
22	D	B	h
23	E	✓	m
24	A	✓	m

Key: ✓ Correct, ○ Omitted, ✗ Incorrect

Scoring: • Correct answer, • Omitted answer, • Wrong answer

Next: Go online to www.collegeboard.org/quickstart to improve your college and/or SAT scores.

Make the next step today! Go to www.collegeboard.org/quickstart and sign in using your code below.

Also Access Code: **A#267014CP**

Your Answers: Student-Produced Responses

Some of the math problems required you to grid in answers instead of selecting an option. For these questions, you will see the correct answer(s) written out.

Name: **STUDENT, MA B** Year: **2011** Grade: **11** School Code: **123456** Optional Code: **00** Student Copy

PSAT/NMSQT[®] Score Report Plus

Critical Reading **Mathematics** **Writing Skills**

Your Scores

Section Scores Also see your projected SAT[®] scores at www.collegeboard.org/satcrack.

Score Range Scores in this range are similar to yours.

Percentile The percentage of test-takers who scored below your score.

50 (8 to 54) You scored higher than 55% of juniors.

52 (41 to 56) You scored higher than 57% of juniors.

44 (6 to 8) You scored higher than 39% of juniors.

National Merit Scholarship Corporation
National Merit Scholarship Corporation (NMSC) uses a Selection Index based on PSAT/NMSQT[®] scores as an initial screen of over 1.5 million students who enter its scholarship programs. See www.nmsc.org for more information.

Year Selection Index
Sum of scores in critical reading, mathematics and writing skills.
166

Percentile
Compares your performance with college-bound juniors.
47

Entry Requirements
(Information you provided on your answer sheet.)
High school student: **Yes** U.S. citizenship: **Yes**

Eligibility Information
If your Selection Index places you among the 15,000 high scorers who qualify for program recognition, you will be notified next September.

Your Skills

These skill categories help you understand your score and focus your study efforts before you take the SAT.

To learn more about your skills and view suggestions for improvement based on your test performance, visit www.collegeboard.org/quickstart and sign your code below.

Online Access Code
A02670146

Deconstructing the Meaning of Words
8 of 15 questions correct (0 omitted)

Author's Craft: Style, Tone & Technique
3 of 5 questions correct (0 omitted)

Reasoning & Information

Number & Operations
12 of 15 questions correct (1 omitted)

Algebra & Functions
5 of 5 questions correct (0 omitted)

Geometry & Measurement

Geometrical Relationships between Words
3 of 12 questions correct (1 omitted)

Words & Phrases Used to Modify or Compare
1 of 5 questions correct (2 omitted)

Phonics & Grammar

	Correct Answer	Your Answer
29	7	✓ m
30	3	✓ m
31	4.5 or 9/2	✓ m
32	1000	✓ m
33	10, 12, 14, or 16	✓ h
34	8/5 or 1.6	✓ h
35	29	✓ h
36	108	50.9 h
37	42	4.2 m
38	8	10 h

Your Answers

See test questions and explanations of the answers at www.collegeboard.org/quickstart.

You can also ask your counselor for a copy of test book back so you review the questions.

Key
✓ Correct • Incorrect
○ Omitted m Multiple
h Incorrect

Scoring
• Correct answer = PLUS 1 PT
• Omitted answer = 0 POINT
• Wrong answer to multiple-choice question = MINUS 1/4 PT
• Wrong answer to math question = MINUS 1/4 POINT
• Points are totaled, then converted to the 20-80 scale.

Next Steps

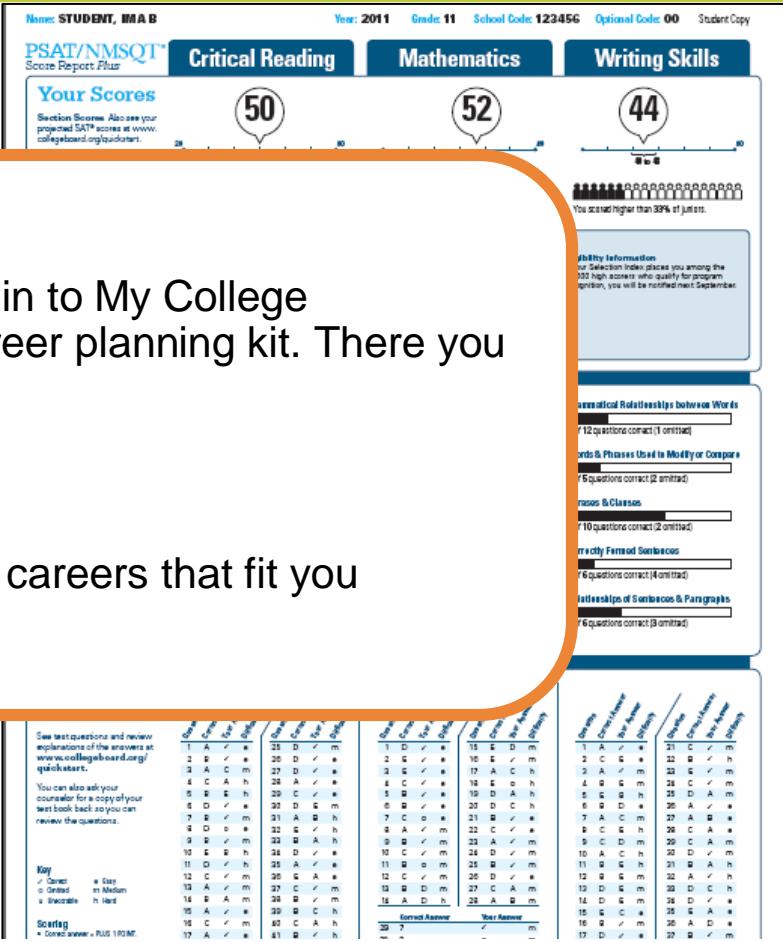
On test day, you told us that you're interested in **Sport & Fitness Administration[®] Management**. To learn more about college majors, visit MyCollegeQuickStart. There you can also:

- Learn about related careers
- Search for colleges
- Take a personality test

Take the next step today! Go to www.collegeboard.org/quickstart and sign in using your code below.

Online Access Code
A02670146P

Next Steps



What's next?

Use the access code on your report to log in to My College QuickStart, a personalized college and career planning kit. There you can:

- Search for colleges
- Get a personalized SAT study plan
- Take a personality test to find majors and careers that fit you

www.collegeboard.org/quickstart

Next Steps

Go online to see your projected SAT scores, learn how to improve them, and find critical college and career planning information.

On test day, you told us that you're interested in **Sport & Fitness Administration/Management**

To learn more about college majors, visit My College QuickStart™. There you can also:

- Learn about related careers
- Search for colleges
- Take a personality test

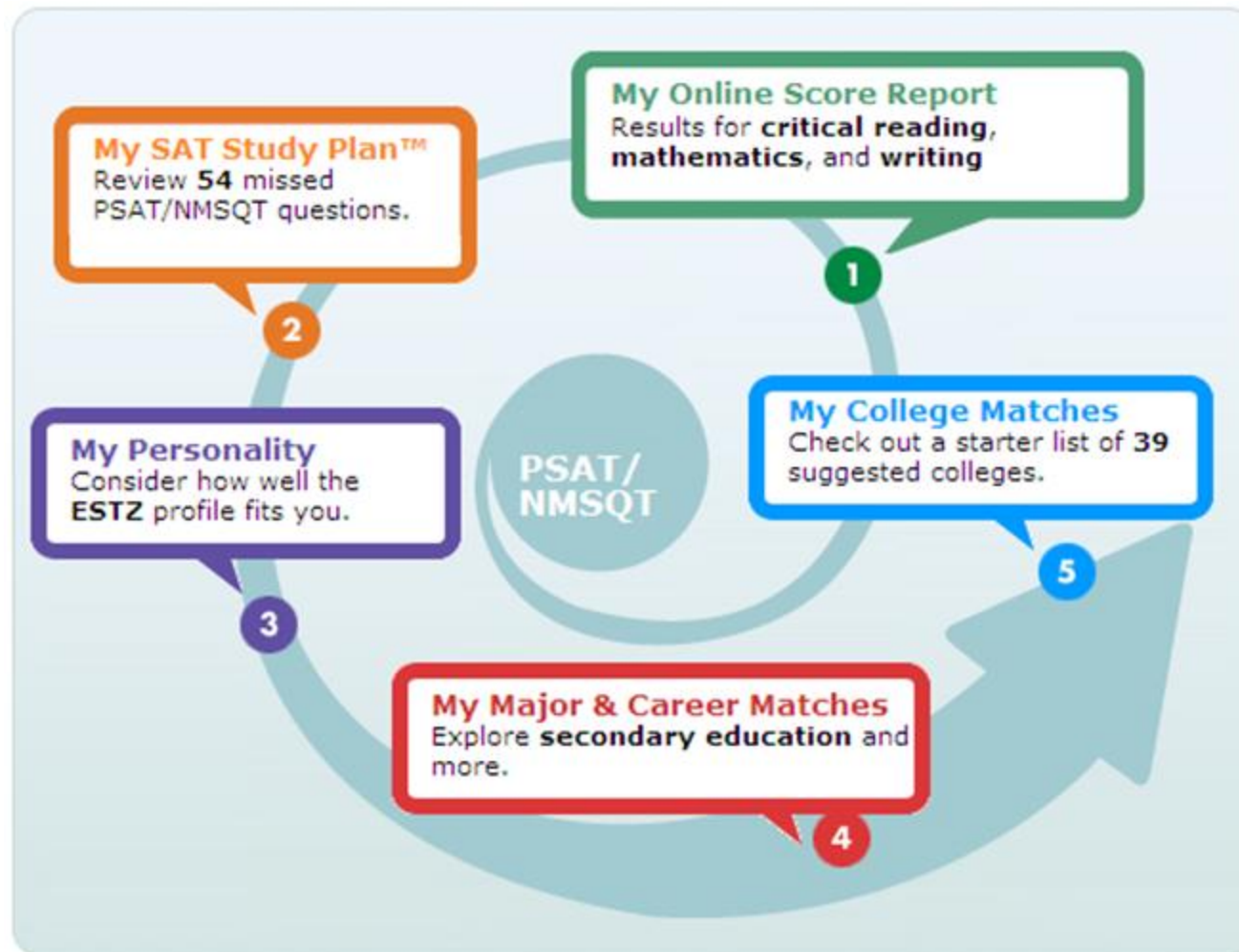
Take the next step today! Go to www.collegeboard.org/quickstart and sign in using your code below.

Online Access Code

A02670146P



My College QuickStart



My College QuickStart

My Online Score Report

- “ Projected SAT[®] score ranges
- “ State percentiles
- “ You can filter questions
- “ Questions and answer explanations

My College Quickstart

Home > My Organizer > My College QuickStart > My Online Score Report

My Online PSAT/NMSQT Score Report

Critical Reading Mathematics Writing Skills

Your Score

Section Score **50**

Score Range **46 to 54**

Projected SAT Score Range
470 to 570

National Percentile You scored higher than 72% of juniors in the nation

State Percentile You scored higher than 80% of juniors in your state

Your Skills **Your Answers**

Filter your answers by

-- skills --

-- difficulty -- **Submit**

correct answers (✓) incorrect answers omitted

Q#	Correct Answer	Your Answer	Difficulty	Content Skill	Process Skill
01	D	✓	hard	Data, Statistics + Probability	Connections
02		omitted	easy	Number + Operations	Representation
03	C	✓	medium	Algebra + Functions	Problem Solving

My College QuickStart

My SAT Study Plan™

- “ Personalized skills to improve
- “ SAT practice questions
- “ An official SAT practice test

My SAT Study Plan™

The screenshot shows the 'My SAT Study Plan' interface. At the top, there are navigation tabs: 'Study Plan Home', 'Meet the SAT', 'Critical Reading', 'Mathematics', 'Writing', and 'Practice Test'. Below these are 'Review & Practice', 'My Skills Feedback', and 'Get Test-Taking Advice'. The 'My Skills Feedback' section is active, displaying a message: 'This feedback was created especially for you, based on your PSAT/NMSQT results.' It includes two instructions: 1. Select a skill with a lower performance bar and review the test questions you answered incorrectly. Then try the question again and read the answer explanations. 2. If you find the practice questions too easy, you're probably ready for the next harder level. If you find them too hard, try the next easier level.

Below the instructions are two columns of skill groups: 'Content Skills' and 'Process Skills'. The 'Reasoning' skill group in the 'Process Skills' column is highlighted with a red oval. The 'Reasoning' skill group is further detailed in a section below, showing a progress bar and a table of results.

* These math-only process skill groups were not included on your Score Report *Plus*.

Skill Group: Reasoning

3 of 7 correct (1 omitted)

Definition	Answers	#	Questions
Develop and use mathematical arguments and proofs to explore the truth of conjectures and justify conclusions.	Omitted	1	37 (view all)
	Incorrect	3	16, 26, 35 (view all)
	Correct	3	10, 22, 32 (view all)

Practice Now

Skills **too easy**? [Try some harder practice questions](#)

Skills **too hard**? [Try some easier practice questions](#)

My College QuickStart

- INSIGHTS
- I.D. ME**
- EXPLORE MAJORS
- FIND A COLLEGE
- RESEARCH CAREERS

I.D. ME

- Introduction
- QuickStarts
- ORA Personality Profiler®
- View My Profile**

- THE TROUBLESHOOTERS
 - ISTA
 - ISFA
 - ESTA
 - ESFA
- THE TRADITIONALISTS
 - ESTZ
 - ESFZ
 - ISTZ
 - ISFZ
- THE CATALYSTS
 - INFA
 - ENFA
 - ENFZ
 - INFZ

The Traditionalists

▶ ISFZ The Provider

introverting feeling
sensing organizing

ISFZs are responsible, caring, reserved, and cooperative. As an ISFZ you have a modest style of helping others in orderly and practical ways. You believe it is important to follow rules and laws; similarly, you adhere to routine and prefer to see traditions preserved with little change. You are prone to worry about things beyond your control and may appear to be less confident because of your tendency to become stressed or agitated and not ask for help.

About 6% of MyRoad participants

You like to be with a few close friends and family members and to offer personal support wherever and whenever needed. You are good at coordinating tasks and activities for everyone but may become overburdened by taking on other people's problems. Likewise, you don't ask for the recognition you would like to have. You are quietly loyal to family, friends, and groups and institutions that are important to you, and you hope others will be as loyal in return. You avoid interpersonal conflict at all costs.

As an ISFZ you are an organized and focused learner who is good at memorizing facts and details related to people. You reliably meet deadlines and obligations. You excel at coordinating and scheduling your own activities and keep yourself and your belongings neat and in good order. You prefer to work on projects and tasks that are useful in a practical way.

▶ Your Strengths Include...

- A practical and dependable nature.

My College QuickStart

My College Matches

- Starter list of colleges
- Criteria to customize search
- Ability to save searches

City University of New York: Hunter College
New York, New York
College Board code: 2301

[Add to List](#)
[Compare](#)
[Find Similar](#)
[Map It](#)
[Print Full Profile](#)
[Send to a Friend](#)

At a Glance	Admission	Cost & Financial Aid	Academics & Support	Sports
Deadlines	SAT®, AP®, CLEP®	Majors	Housing & Campus Life	International Students

Main Address
 695 Park Avenue
 New York, NY 10065
 (212) 772-4000
www.hunter.cuny.edu

Admission Office
 695 Park Avenue
 New York, NY 10065
 (212) 772-4490
admissions@hunter.cuny.edu
 Contact: William Zlata
 Director of Admissions

Type of School
 Public
 Liberal Arts College
 Four-year
 Coed
 Percent applicants admitted: 28%
 Regionally Accredited
 Middle States Association of Colleges and Schools
 College Board member

Calendar: Semester
Degrees offered:

- Bachelor's
- Master's

Setting
 Urban setting
 Very large city (over 500,000)
 Commuter campus

Size
 Total undergrads: 15,698
 First-time degree-seeking freshmen: 2,042
 Degree-seeking undergrads: 14,709
 Graduate enrollment: 5,560

My College QuickStart

INSIGHTS
I.D. ME
EXPLORE MAJORS
FIND A COLLEGE
RESEARCH CAREERS

CIVIL ENGINEERING
Overview
High School Courses
College Courses
Career Connection
Perspectives

Majors A-Z

My Interest ?

High
Medium
None

Updated: 8-31-2009

Topics


Construction Engineering & Management

Environmental Engineering

Geological Engineering

Geotechnical Engineering

Mining Engineering



Overview


The ancient Egyptians built pyramids and levees. The Romans built aqueducts and the Colosseum. The Persians and ancient Greeks undertook massive building projects. Civil engineering has been practiced for thousands of years.

Civil engineers plan, design, build, and repair just about anything you can think of. That includes buildings, bridges, dams, tunnels, highways, stadiums, sewage treatment plants, power plants, airports, and even satellites. These days they're also in demand to repair the damage caused by natural disasters such as earthquakes, hurricanes, and floods. And our crumbling public structures, from bridges to tunnels, all need civil engineers to repair them.

Civil engineers plan, design, build, and repair just about anything you can think of.

Civil engineers specialize in different areas. Transportation engineers, for example, tackle problems like traffic jams and air travel safety. Water resources engineers work to control the flow of rivers and ensure clean drinking water.

As a civil engineering major, you'll take classes in several fields before focusing on one. But you'll find there's overlap in some course work. For instance, you'll learn how to build structures that can stand up to earthquakes in both geotechnical and structural engineering. In a geotechnical engineering course, you'll focus on soil structure and foundation design. But when you study structural engineering, you'll be more concerned with designing



My College QuickStart

Log in to your personalized account at
www.collegeboard.org/quickstart